

Reporting Period August 12, to September 9, 2008

TABLE OF CONTENTS

I. Monthly Progress Reports

	<u>Page</u>
GEC – General Engineering Consultant	1
GEC – Public Involvement	5
N1 - Capital Circle NW – I-10 to US 90	6
N2 - Capital Circle NW/SW – SR 371 (Orange Avenue) to US 90	7
W1 - Capital Circle SW – Crawfordville Road to SR 20	12
E3 - Capital Circle SE – Woodville Highway to Crawfordville Road	16
E2 - Capital Circle SE – Woodville Highway to Tram Road	17
E1 - Capital Circle SE – Tram Road to Connie Drive	26
C2 - Capital Cascade Trail –Segment 2 Design.....	28
C3 & C4 - Capital Cascade Trail – Segments 3 and 4 Design	32
Mahan Drive/US 90 – Dempsey Mayo Road to I-10 (Tier 1 Blueprint Project).....	35
Acronymn Glossary.....	37

GEC – GENERAL ENGINEERING CONSULTANT

Project Description:

General Engineering Consultant Contract for the Blueprint Intergovernmental Agency. The LPA GROUP INCORPORATED is the Prime Consultant with Jacobs Engineering Group, Incorporated as the major subconsultant. Twelve additional subconsultants, seven of which are MBE firms, make up the LPA/Jacobs Blueprint GEC Management Team.

Key Personnel:

Program Manager: David Snyder – THE LPA GROUP INCORPORATED
Design Manager: Jim Shepherd - Jacobs

Contract Cost & Schedule Status – Contract 597

Original Contract Amount:	\$	12,020,012.00
Fiscal Year Re-Authorization:	\$	5,211,303.00
Executed Supplemental Agreements:	\$	0.00
Pending Supplemental Agreements:	\$	0.00
Current Contract Amount:	\$	17,231,315.00
Invoiced to Date:	\$	13,839,144.30
Remaining Contract Amount:	\$	3,392,170.70
Percent of Contract Amount Complete:		80.3%

GEC – GENERAL ENGINEERING CONSULTANT

Subconsultant Participation:	Contract Amt	% of GEC Contract	Expended To Date	FY To Date
Moore Bass Consulting <i>Stormwater & Landscaping</i>	\$ 292,177.00	1.70	\$ 197,931.46	\$ 89,523.03
Pope Environmental <i>Environmental Services</i>	\$ 329,276.00	1.91	\$ 160,550.00	\$ 21,860.00
OLH International <i>Program Controls</i>	\$ 1,699,730.00	9.86	\$ 1,548,579.43	\$ 209,673.09
Beck Consulting Group <i>Government Relations</i>	\$ 65,000.00	0.38	\$ 30,442.44	\$ 3,200.00
Quest Corporation of America <i>Public Involvement</i>	\$ 814,604.00	4.73	\$ 585,564.08	\$ 143,949.54
Uzzell Advertising <i>Public Relations, Web Maint.</i>	\$ 427,405.00	2.48	\$ 408,933.16	\$ 123,719.20
Welch & Ward Architects (no longer in business) <i>Architecture, Recreation Facilities</i>	\$ 25,000.00	0.15	\$ 14,945.00	\$ 0.00
THC Right-of-Way Services, Inc. <i>R/W appraisal and acquisition</i>	\$ 3,891,999.00	22.59	\$ 2,771,608.94	\$ 1,126,020.02
GPI Southeast <i>Survey and mapping</i>	\$ 421,406.00	2.45	\$ 177,009.62	\$ 4,672.08
Weigal - Veasey <i>Property Appraisal</i>	\$ 0.00	0.00	\$ 0.00	\$ 0.00
Williams Earth Sciences <i>Geotechnical Services</i>	\$ 35,000.00	0.20	\$ 15,802.49	\$ 11,515.71
Allen Nobles & Associates <i>Survey</i>	\$ 0.00	0.00	\$ 85,426.00	\$ 11,700.00
THE LPA GROUP (PRIME) <i>Prime Consultant</i>	\$ 4,883,472.00	28.34	\$ 4,650,292.09	\$ 1,300,533.38
JACOBS (PRIME SUB) <i>Prime Subconsultant</i>	\$ 4,341,245.00	25.19	\$ 3,189,559.59	\$ 715,495.53
Wilderness Graphics <i>Signage</i>	\$ 5,000.00	0.03	\$ 2,500.00	\$ 2,500.00
Total Contract:	\$ 17,231,314.00	100.00%	\$ 13,839,144.30	\$ 3,764,361.58

MBE Goal:	\$ 2,670,853.67	15.50%
MBE to Date:	\$ 2,946,945.57	21.29%

GEC – GENERAL ENGINEERING CONSULTANT

Activities Since Last Period:

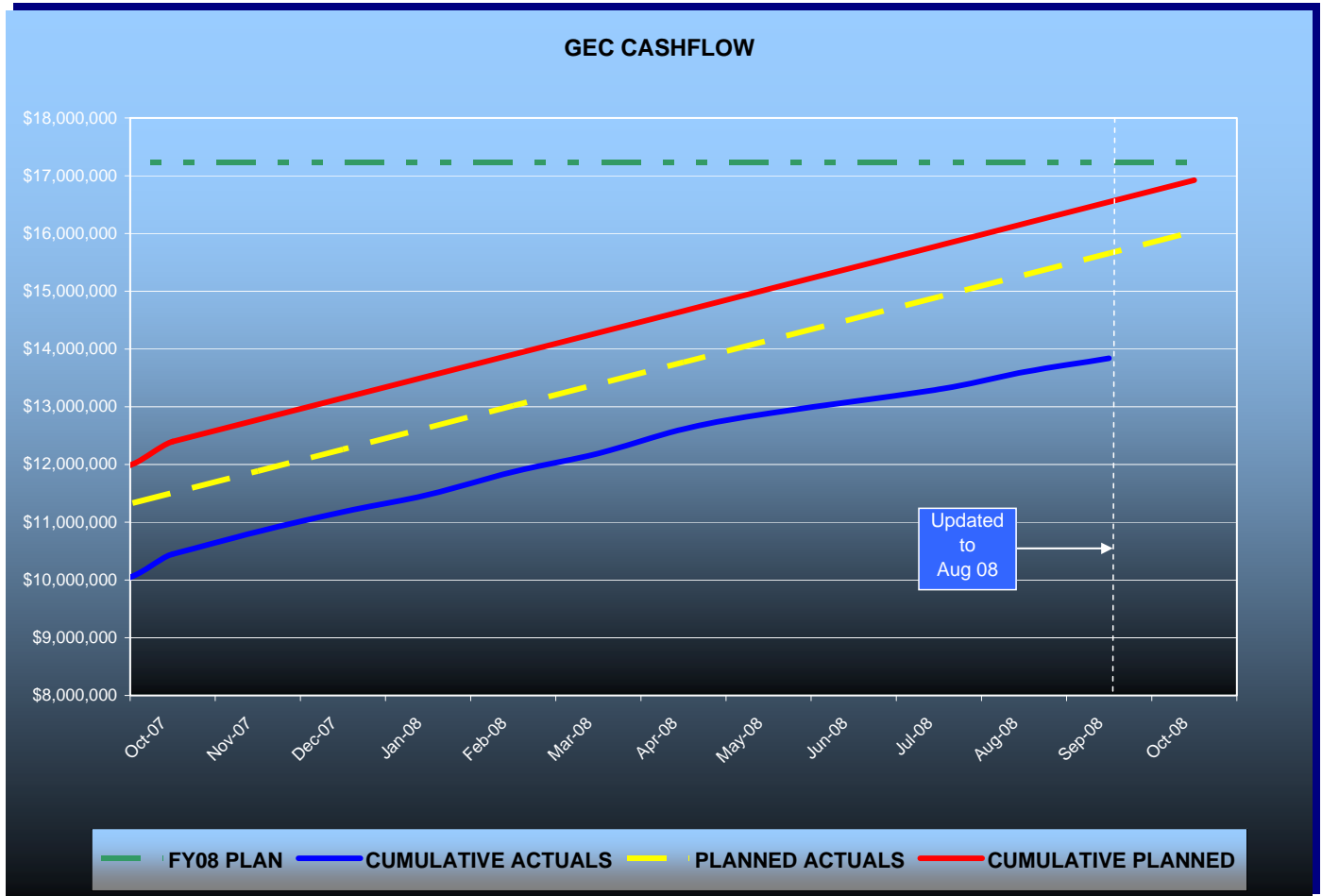
1. Resolving Operating Permit issues for Regional Stormwater Pond #1 with Leon County GM for CCNW-N1
2. Coordinated Mahan Drive landscaping items with LCPWD and LPA GROUP
3. JPA with CRCDD for Southchase Boulevard construction finalized and awaiting signatures
4. Invitation for Bid Package for Regional Stormwater Pond #1 ready and at COT for CCNW-N1
5. Snail removal and experimental techniques for the control of snails in Pond #1 completed for CCNW-N1
6. Continue with logging in and handling requests for public records
7. Finalized agenda items for CAC and TCC meetings and upcoming IA meeting
8. Linear Infrastructure Variance for CCT-2 being updated by BP2K
9. Working to transfer Regional Stormwater Pond #1 from FDOT to LCPWD
10. RFQ and Scope of Services for a CEI firm on the CCNW/SW-N2 project complete
11. Continued reviewing Phase III Plans (90% complete) on CCNW/SW-N2
12. Reviewing 100% Plans on CCSE-E2 Segments 1A, 1B and 3A

Planned Activities for Next Period:

1. Present Offer of Final Payment Letter to M Inc. for CCSE-E1 Project
2. Attend regularly scheduled meeting with FDOT in Chipley
3. Release for Construction plans to contractor on CCSE-E2 for Segments 1A, 1B and 3A
4. Finalize JPA with FDOT for tree/permit mitigation on the Mahan Drive Project
5. Invitation for Bid (IFB) package for CCNW and Stormwater Pond #1 to shortlisted contractors
6. Finalize Linear Infrastructure Variance request for CCT-2 for COT Commission approval
7. Coordinate with COT GM for permitting on CCSE-E2, Segment 3B
8. Complete review and provide comments on Phase III Plans for CCNW/SW-N2
9. Secure EMP for Segment 2 of CCSE-E2 Project
10. Continue with Right-of-Way activities on CCNW/SW-N2 Project
11. Continue with the timely and efficient responses to public records requests
12. Coordinate transfer of Stormwater Pond #1 to LCPWD

GEC – GENERAL ENGINEERING CONSULTANT

GEC Contract Financial Summary of Planned Vs. Actual Costs – FISCAL YEAR 2008



GEC – PUBLIC INVOLVEMENT

Activities Since Last Period:

1. Launched new website on August 18
2. Organized and attended Community Representatives Meeting #11 for CCSW-W1
3. Prepared presentation for Rotary Club
4. Prepared presentation for and attended TCC and CAC Meetings
5. Continued to coordinate development of Environmental Page for Website
6. Prepared presentation for IA Meeting

Planned Activities for Next Period:

1. Respond to Public Records Request MPR Agenda and MPRs for CCNW/SW-N2
2. Prepared Right-of-Way Parcel map for CCNW/SW-N2
3. Prepare for and Attend IA Meeting
4. Continue to coordinate Environmental Page for Website
5. Fine tune document search database for website
6. Prepare Presentation for Opportunity Tallahassee

N1 - CAPITAL CIRCLE NW – I-10 TO US 90

Project Description:

This 1.991-mile roadway project (FPID: 219722-1-52-01 & 02) consists of upgrading the existing undivided rural facility to a six-lane divided urban (curb and gutter) facility. Upgrades to the West Tennessee, Tharpe, Hartsfield and Commonwealth intersections are included. The purpose of the roadway improvement project is to increase the capacity and safety of the existing highway. The roadway project was designed, let and constructed by the Florida Department of Transportation, with advance funding provided by the Blueprint 2000 Intergovernmental Agency.

Project Personnel:

Blueprint 2000: **Project Manager:** Marcus Kelly

Project Status:

As of September 08, 2008:

THE CCNW-N1 Roadway Improvement Project was Final Accepted by FDOT on 9-4-2007. The One-Year Warranty period for the Regional Stormwater Pond / landscaping expired on 9-4-2008.

THE CCNW-N1 Landscaping Project - Invitation for Bids - has been prepared by Blueprint 2000. 100% Design-Plans have been prepared and submitted along with permit applications. The COT Growth Management Department has issued their permit, and FDOT review comments have been addressed by the EOR. FDOT has requested that COT provide a written commitment of maintenance responsibility for the landscaping. This should be completed by the end of the month.

Blueprint 2000 has expended its funding for the experimental program at the 15.3 acre regional storm-water facility (Pond #1) to reduce the Exotic Apple Snail population to minimize damage to the aquatic plantings. This program has proven very successful, as the snail population has been significantly reduced, and the aquatic plantings are becoming re-established. Blueprint 2000 has shared the results of this program with other agencies, and BP2K continues to encourage further research with these other agencies for potential long-term solutions to the snail problem.

Financial Data:

Original Contract Amount (FDOT Construction Only) = \$24,172,803.43

- ◆ **Final Amount Payable (FDOT Construction Only) = \$25,111,616.13** (includes \$822,445.20 Fuel & Bit Adjustment and \$406K for Early Completion Incentive Bonus)

* This amount does not include CEI Costs

Original JPA Work (Utility Work funded by COT) = \$1,290,120.00

- ◆ **Final Amount Payable (JPA-COT utility work) = \$1,259,912.00**

Right-Of-Way Status Report:

All parcels closed. Final Right-of-Way costs \$49,813,468.

N2 - CAPITAL CIRCLE NW/SW – SR 371 (ORANGE AVE.) TO US 90

Project Description:

The Expanded Project Development and Environment (PD&E) Study limits for this 2.9 mile project extend from Tennessee Street (US 90/SR 10) to Orange Avenue (SR 371). The purpose of this roadway improvement project is to increase the capacity and safety of the existing highway by expanding the existing two-lane undivided rural roadway to a six-lane divided urban (curb and gutter) facility. New traffic signals will be provided at Orange Avenue, Blountstown Highway and Gum Road Intersections. The project also includes significant landscaping as well as pedestrian, bicycle and recreational amenities. This project will develop final design plans for construction.

Project Personnel:

Blueprint 2000:	Program Manager:	David Snyder
	Construction Manager:	Marcus Kelly
	Project Manager:	Latesa Turner
H.W. Lochner:	Project Manager:	Hugh Williams

Contract Cost & Schedule Status - Agreement No. 772/Authorization 1 - As of 9/9/2008

Contract Commencement:	10May04
Contract Completion:	31May09
Percent of Work Performed:	92.0%
Original Contract Amount:	\$ 1,921,585.90
Executed Supplemental Agreements:	\$ 3,184,237.18
Pending Supplemental Agreements:	\$ 149,920.94
Current Contract Amount:	\$ 5,105,823.08
Invoiced to Date:	\$ 4,433,674.57
Remaining Contract Amount:	\$ 672,148.51
Percent of Contract Amount Complete:	86.8%
Original Contract Time:	1095 Days
Contract Time Extensions:	751 Days
Current Contract Time:	1846 Days
Contract Time Expended:	1583 Days
Contract Time Remaining:	263 Days
Percent Contract Time Expended:	85.8%

Schedule Milestones:

Final Environmental Documents	20Jun06
Final Preliminary Engineering Report	20Jun06
Location Design Concept Approval (LDCA)	22Aug06
30% Roadway Plans	28Aug06
VE Complete	27Oct06
2nd Draft ROW Maps	30Apr07
Final ROW Maps	30Sep07
60% Roadway Plans	01Nov07
90% Plans	08Aug08
100% Plans	31Dec08
Final Plans	31Mar09

N2 - CAPITAL CIRCLE NW/SW – SR 371 (ORANGE AVE.) TO US 90

Design Subconsultant Participation:	Contract Amt	% of Design Contract	Expended To Date	FY To Date
Environmental Geotechnical Specialists				
<i>Geotechnical</i>	\$ 482,783.31	9.46	\$ 397,099.20	\$ 61,316.10
Diversified Design & Drafting Services, Inc.				
<i>Survey and R/W Mapping</i>	\$ 803,644.64	15.74	\$ 752,662.35	\$ 139,109.57
Archaeological Consultants, Inc.				
<i>Cultural Resource Assessment</i>	\$ 24,093.51	0.47	\$ 24,093.51	\$ 13,146.36
HNTB/TEI				
<i>Traffic Analysis</i>	\$ 90,310.59	1.77	\$ 90,310.59	\$ 0.00
American Acquisition Group				
<i>Right of Way</i>	\$ 97,873.48	1.92	\$ 94,046.22	\$ 0.00
HW LOCHNER (PRIME)				
<i>Prime Consultant</i>	\$ 3,405,867.55	66.71	\$ 2,912,690.70	\$ 1,181,112.86
PBS&J				
<i>Landscape</i>	\$ 143,815.00	2.82	\$ 109,552.00	\$ 109,552.00
CDM				
<i>Stormwater Modeling</i>	\$ 57,435.00	1.12	\$ 53,220.00	\$ 53,220.00
<hr/>				
Total Design Contract:	\$ 5,105,823.08	100.00%	\$ 4,433,674.57	\$ 1,557,456.89

Design MBE Goal:	\$ 791,402.58	15.50%
Design MBE to Date:	\$ 1,173,855.06	26.48%

Project Status:

Phase 3 (90%) roadway, drainage, signing and marking, signalization, lighting and landscape design plans have been submitted and are currently under review. Approval was received in June from CSX on the preliminary design of the bridge spans over the CSX Railroad. Preparation of 90% structural design plans for the CSX railroad bridge and retaining walls are currently underway. Utility coordination and environmental permitting activities continue. Blueprint held an Access Management Public Hearing in early May to address the access class change along the project corridor. Right-of-Way acquisition is on-going.

N2 - CAPITAL CIRCLE NW/SW – SR 371 (ORANGE AVE.) TO US 90

Activities Since Last Period:

1. Received 90% design review comments which identified Right-of-Way acquisition issues for several parcels. These issues were resolved prior to IA meeting
2. Worked to resolve ownership and remainder area issues for several parcels on the Right-of-Way maps
3. Submitted Phase III (90%) Roadway/Drainage, Signing/Marking, Signalization, Lighting and Landscape Plans
4. Continued work to complete the Phase III (90%) CSX bridge plans and retaining wall plans
5. The Bridge Hydraulics Report at Gum Creek was previously updated and submitted. Blueprint review was completed. Awaiting completion of review by County and approval so the bridge design can proceed

Planned Activities for Next Period:

1. Complete and submit the EIA to Leon County Growth Management
2. Continue coordination activities with FDEP and Corps of Engineers on the Wetland Resource Permit
3. After review of Bridge Hydraulics Report, finalize and submit the Gum Creek Bridge Development Report
4. Continue preparation of the 90% CSX railroad bridge and retaining wall plans
5. Continue to coordinate and follow up on solutions to the apple snail problem

Significant Issues and Resolutions:

ISSUE

Complete outstanding Right-of-Way issues.

RESOLUTION

Blueprint staff will continue to coordinate with Lochner and 3DS to identify and finalize outstanding Right-of-Way issues

ISSUE

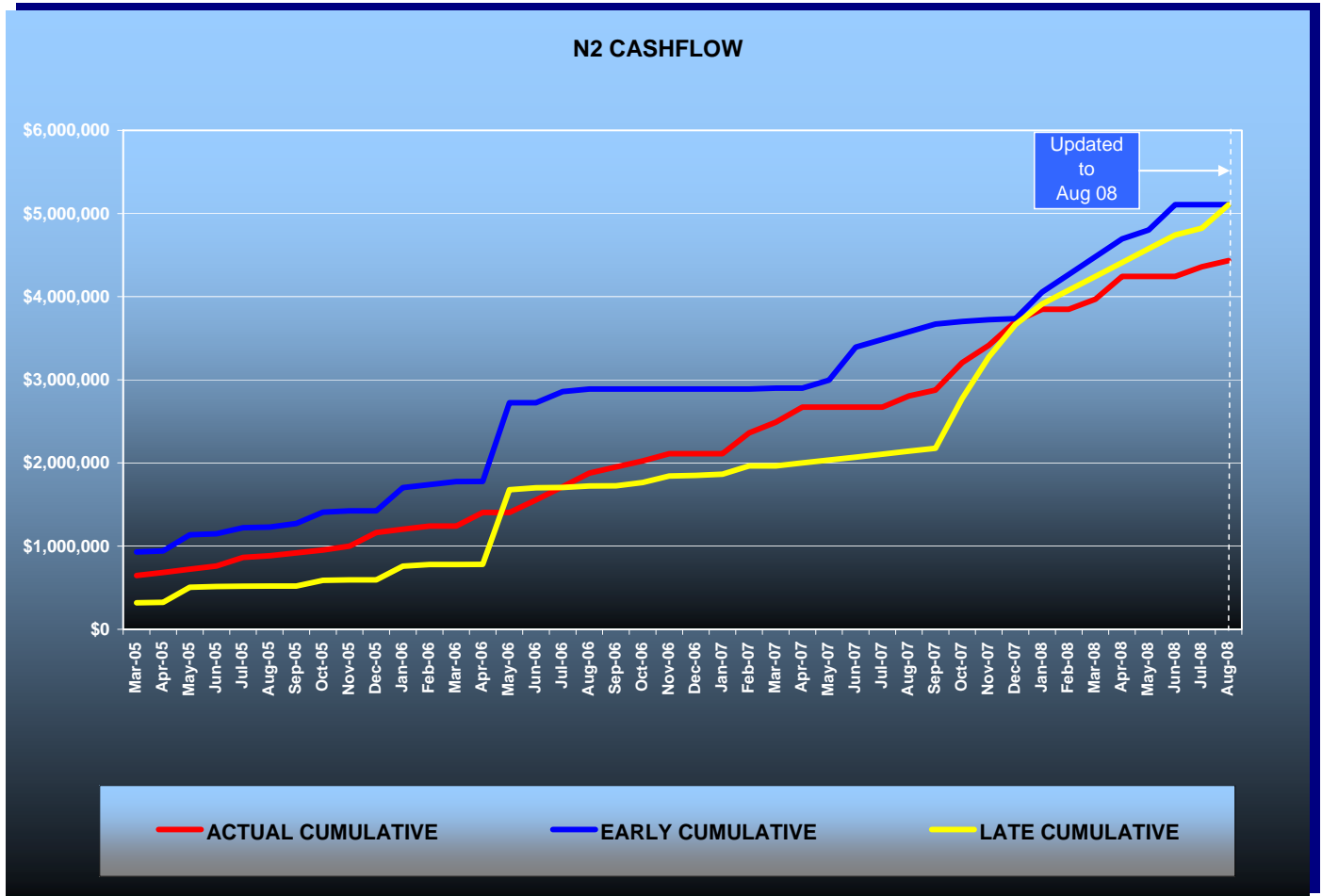
Blueprint needs to update project schedule.

RESOLUTION

Lochner is developing a revised design schedule.

N2 - CAPITAL CIRCLE NW/SW – SR 371 (ORANGE AVE.) TO US 90

Contract Financial Summary of Planned Vs. Actual Costs



N2 - CAPITAL CIRCLE NW/SW – SR 371 (ORANGE AVE.) TO US 90

Right-Of-Way Status Report:

IN POSSESSION	21
AGREEMENTS SECURED BUT NOT CLOSED	4
DONATION	0
NEGOTIATING/PREPARING FOR SUIT	50
TOTAL PARCELS ON PROJECT	75

W1 - CAPITAL CIRCLE SW – CRAWFORDVILLE ROAD TO SR 20

Project Description:

A Project Development and Environmental (PD&E) Study will be conducted for that portion of Capital Circle (SR 263) between Crawfordville Road (SR 61 US 319) and Blountstown Highway (SR 20) a distance of approximately 6.7 miles. The PD&E study will be conducted in accordance with Federal Highway Administration (FHWA), Blueprint 2000 Agency, and Florida Department of Transportation (FDOT) guidelines. The study will evaluate alternative alignments as well as the existing alignment. Several viable alternatives will be developed and evaluated in order to address the project needs while taking into account the Blueprint 2000 & Beyond “Project Definitions Report”, prepared by the Economic and Environmental Consensus Committee in 1999, and the Lake Bradford Sector Plan, conducted by the Tallahassee/Leon County Planning Department.

Project Personnel:

Blueprint 2000:	Planning Manager:	Dave Bright
	Project Manager:	Latesa Turner
Kimley-Horn & Assoc.:	Project Manager:	Steve Godfrey

Contract Cost & Schedule Status - Agreement No. 1284/Authorization 1 - As of 9/9/2008

Contract Commencement:	22Aug06
Contract Completion:	22Aug09
Percent of Work Performed:	70.0%
Original Contract Amount:	\$ 2,672,271.68
Executed Supplemental Agreements:	\$ 27,108.76
Pending Supplemental Agreements:	\$ 0.00
Current Contract Amount:	\$ 2,699,380.44
Invoiced to Date:	\$ 1,773,366.54
Remaining Contract Amount:	\$ 926,013.90
Percent of Contract Amount Complete:	65.7%
Original Contract Time:	1096 Days
Contract Time Extensions:	0 Days
Current Contract Time:	1096 Days
Contract Time Expended:	749 Days
Contract Time Remaining:	347 Days
Percent Contract Time Expended:	68.3%

Schedule Milestones:

Consultant Selected	26May06
Study Begins	22Aug06
Agency Kick-off Meeting	19Oct06
Public Kick-off Meeting	19Oct06
Community Mini-Charrettes	15Jan07
Community Meeting	12Apr07
Corridor/Concepts Charrette	10May07
Interim Public Meeting	06Nov07
Alternatives Public Information Meeting	13Nov08
Preferred Alternative Public Meeting	TBD
Public Hearing	01Jun09

W1 - CAPITAL CIRCLE SW – CRAWFORDVILLE ROAD TO SR 20

Design Subconsultant Participation:	Contract Amt	% of Design Contract	Expended To Date	FY To Date
Target Copy and Sign Printers				
<i>Printing</i>	\$ 30,000.00	1.11	\$ 23,414.58	\$ 2,872.40
Keystone Field Services				
<i>Relocation</i>	\$ 35,000.00	1.30	\$ 0.00	\$ 0.00
Environmental and Geotechnical Specialists				
<i>Geotech</i>	\$ 127,874.94	4.74	\$ 82,090.79	\$ 47,738.85
Diversified Design & Drafting Services				
<i>Survey</i>	\$ 59,830.00	2.22	\$ 0.00	\$ 0.00
StategyWise, LLC				
<i>Economic Development</i>	\$ 19,500.00	0.72	\$ 0.00	\$ 0.00
Hamilton Smith Assoc.				
<i>Traffic</i>	\$ 18,600.00	0.69	\$ 18,600.00	\$ 0.00
Registe, Sliger Engineering				
<i>Structures</i>	\$ 123,376.71	4.57	\$ 45,155.87	\$ 17,889.62
KIMLEY-HORN & ASSOC (PRIME)				
<i>Prime</i>	\$ 1,612,223.40	59.73	\$ 1,158,717.98	\$ 407,359.44
Dr. Wayson				
<i>Noise</i>	\$ 30,147.25	1.12	\$ 0.00	\$ 0.00
Hass Center				
<i>Economic Development</i>	\$ 37,200.00	1.38	\$ 35,340.00	\$ 35,340.00
Florida Acquisitions & Appraisal				
<i>Appraisal/Acquisition</i>	\$ 235,804.91	8.74	\$ 168,290.01	\$ 26,264.92
Biological Research Assoc.				
<i>Water Quality</i>	\$ 117,315.50	4.35	\$ 64,659.82	\$ 9,454.64
Search, Inc				
<i>Cultural Resource/Archaeological</i>	\$ 53,826.73	1.99	\$ 10,765.35	\$ 10,765.35
Camp, Dresser & McKee				
<i>Drainage & Pond Design</i>	\$ 198,681.00	7.36	\$ 166,332.14	\$ 40,158.12
<hr/>				
Total Design Contract:	\$ 2,699,380.44	100.00%	\$ 1,773,366.54	\$ 597,843.34

Design MBE Goal:	\$ 418,403.97	15.50%
Design MBE to Date:	\$ 169,261.24	9.54%

W1 - CAPITAL CIRCLE SW – CRAWFORDVILLE ROAD TO SR 20

Project Status:

Kimley-Horn and Associates began the Capital Circle Southwest PD&E study in late August, 2006.

The Public and Agency Kickoff Meetings were conducted in October, 2006.

Six (6) Community Forum Meetings were conducted concluding with a Town Hall Meeting held in April 2007.

The Concept Charrettes were held on May 10th and 12th, 2007.

The Intergovernmental Agency approved the evaluation criteria and the criteria weighting that will be used to evaluate the alternative alignments.

An Interim Public Meeting was held on November 6, 2007 to present the status of the project since the Concepts Charrette.

Eleven (11) Community Representatives meetings have been held through the month of August 2008.

The project has begun the analysis phase using the alternatives alignments established through the Concept Charrette process. The Alternatives Public Meeting has been scheduled for November 13, 2008.

Activities Since Last Period:

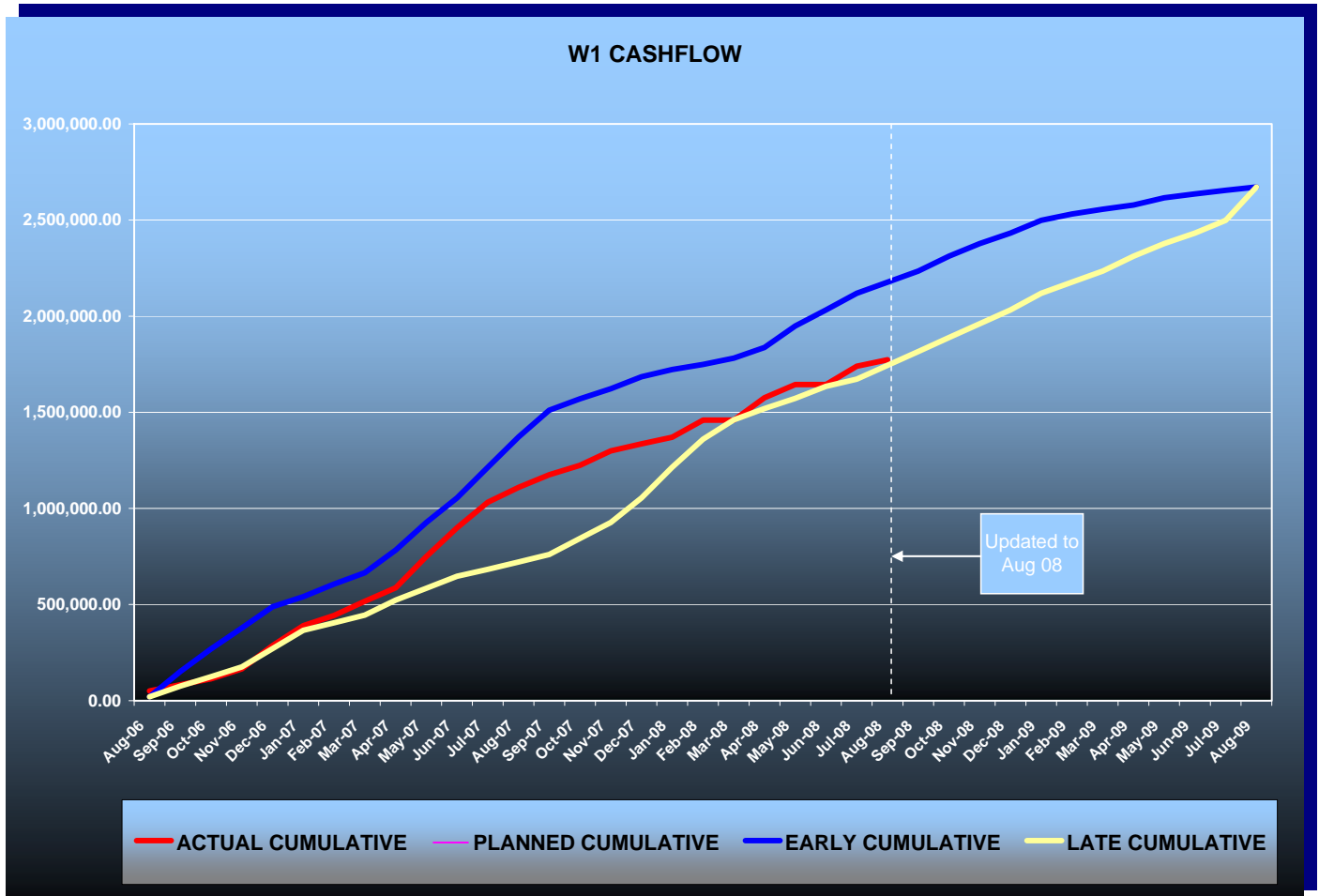
1. Conducted August Community Representatives Meeting
2. Continued preparation for meetings with ETDM/ETAT Agencies
3. Continued preparation for Alternatives Public Meeting
4. Coordinated stormwater pond sizing and locations with CDM
5. Completed draft alternatives analysis summary
6. Continued preparation of 1st draft Project Development Summary Report
7. Completed draft Pond R/W costs
8. Continued refinement of access scenarios; Submitted concepts for Blueprint review
9. Continued preparation of pre-draft Noise Evaluation
10. Prepared and submitted draft Economic Impact Report for Blueprint review
11. Received review comments from FDOT DEMO on WER and ESBAR

Planned Activities for Next Period:

1. Schedule and hold meetings with ETDM/ETAT members
2. Continue preparation for FHWA class of action meeting
3. Continue preparation for FDOT meeting regarding ETDM comments and Class of Action
4. Continue preparation for Alternatives Public Meeting, IA meeting and upcoming CR meetings
5. Submit draft Pond Siting Report
6. Review access scenarios with Blueprint staff
7. Continue refinement of alternatives analysis summary
8. Prepare initial draft of evaluation matrix for review
9. Complete survey of West Drainage Ditch and Tyson Road Pit
10. Develop concepts for crossing West Drainage Ditch and Tyson Road Pit
11. Submit draft R/W Costs
12. Submit draft Noise Evaluation
13. Continue monitoring of Black Swamp
14. Survey monitoring well elevations
15. Finalize Wetland Evaluation Report
16. Address review comments from FDOT DEMO on ESBAR

W1 - CAPITAL CIRCLE SW – CRAWFORDVILLE ROAD TO SR 20

Contract Financial Summary of Planned Vs. Actual Costs



E3 - CAPITAL CIRCLE SE – WOODVILLE HWY TO CRAWFORDVILLE RD

Project Description:

This project proposes to widen approximately 1.53 miles of the existing two-lane Capital Circle SE from Woodville Highway to Crawfordville Road to a multi-lane urban facility.

FDOT Roadway ID: 55002000 SR 263 from MP 0.200 to MP 1.730

Project Personnel:

Blueprint 2000:	Engineering Manager:	Jim Shepherd
	Project Manager:	Gary Phillips
URS Corporation:	Project Manager:	Chris Lovett

Project Status:

Contract and Letter of Authorization was executed on February 2, 2006
Part A - 60% design plans - total cost is \$996,151.54

MBE Participation = 16.0%

Right-Of-Way Status Report:

Right-of-Way maps are at 100%. We are in the position to begin acquiring Right-of-Way as funding becomes available.

A meeting was held on July 30 between FDOT, USFS and Blueprint 2000 and the Stipulations were finalized and accepted by each agency. FHWA has requested an environmental reevaluation be completed and submitted along with the Highway Easement Deed. The most recent environmental reevaluation for E3 was completed in October 2005. Blueprint 2000 will prepare a new environmental reevaluation that will address the ponds for history/archaeology, endangered species, contamination, etc. and submit to FDOT as soon as possible.

E2 - CAPITAL CIRCLE SE – WOODVILLE HIGHWAY TO TRAM ROAD

Project Description:

This project proposes to widen approximately 2.3 miles of the existing two-lane Capital Circle SE from Woodville Highway to Tram Road to an ultimate six-lane facility, mileposts 0.0 to 2.12. In addition, a transitional segment west of Woodville Highway (SR 263 MP 0.0 to approximately MP 0.2). The purpose of the roadway improvement project is to increase the capacity and safety of the existing highway. New traffic signal will be installed at access to Lakes St. Marcos development on Woodville Highway, south of CCSE. Provisions for future traffic signals will be provided at three intersections: Paul Russell Road and two unnamed access roads to proposed developments on the north side of CCSE, between Woodville Highway and Tram Road. The project includes significant landscaping as well as pedestrian, bicycle and recreational amenities.

Project Personnel:

Blueprint 2000:	Program Manager:	David Snyder
	Project Manager:	Marek Romanowski
	Construction Manager:	Marcus Kelly
Sandco Inc./Genesis:	Project Manager:	Bob Myrick
	Design PM:	Jim Sullivan

Contract Cost & Schedule Status - Agreement No. 1464 - As of 9/9/2008

Contract Commencement:	28Aug07
Contract Completion:	13Feb10
Percent of Work Performed:	22.8%
Original Contract Amount:	\$ 17,616,609.90
Executed Supplemental Agreements:	\$ 250,000.00
Pending Supplemental Agreements:	\$ 0.00
Current Contract Amount:	\$ 17,866,609.90
Invoiced to Date:	\$ 4,065,121.92
Remaining Contract Amount:	\$ 13,801,487.98
Percent of Contract Amount Complete:	22.8%
Original Contract Time:	900 Days
Contract Time Extensions:	0 Days
Current Contract Time:	900 Days
Contract Time Expended:	378 Days
Contract Time Remaining:	522 Days
Percent Contract Time Expended:	42.0%

Schedule Milestones:

Contract with DB Team executed	05Jun07
Notice To Proceed	28Aug07
Ground Breaking Ceremony	29Aug07
COT EMP permit for Segment 1B	24Mar08
Project Final Completion Date	13Feb10

E2 - CAPITAL CIRCLE SE – WOODVILLE HIGHWAY TO TRAM ROAD

Design Subconsultant Participation:	Contract Amt	% of Design Contract	Expended To Date	FY To Date
EGS				
<i>Environmental Engineering</i>	\$ 132,655.00	10.99	\$ 83,241.70	\$ 83,241.70
Mehta & Associates, Inc.				
<i>Design Survey</i>	\$ 44,000.00	3.64	\$ 28,600.00	\$ 28,600.00
Genesis Group				
<i>Prime Consultant of Design Team</i>	\$ 1,030,702.00	85.37	\$ 836,745.52	\$ 836,745.52
<hr/>				
Total Design Contract:	\$ 1,207,357.00	100.00%	\$ 948,587.22	\$ 948,587.22

Design MBE Goal:	\$ 187,140.34	15.50%
Design MBE to Date:	\$ 111,841.70	11.79%

Construction Subconsultant Participation:	Contract Amt	% of Design Contract	Expended To Date	FY To Date
Florida Developers				
<i>Earthwork, Trucking, Drainage</i>	\$ 1,056,996.50	6.44	\$ 485,931.93	\$ 485,931.93
Gains & Sons				
<i>Striping</i>	\$ 123,316.27	0.75	\$ 2,424.19	\$ 2,424.19
Hawthorn Construction				
<i>Curb & Gutter, Concrete Work</i>	\$ 880,830.50	5.37	\$ 68,824.33	\$ 68,824.33
Ingram Signalization Inc.				
<i>Signalization</i>	\$ 616,581.50	3.76	\$ 0.00	\$ 0.00
Tallahassee Contractors				
<i>Trucking, Limerock Base</i>	\$ 1,056,996.50	6.44	\$ 560,449.79	\$ 560,449.79
Sandco, Inc				
<i>Prime Contractor of DB Team</i>	\$ 12,674,531.63	77.24	\$ 1,998,904.46	\$ 1,998,904.46
<hr/>				
Total Construction Contract:	\$ 16,409,252.90	100.00%	\$ 3,116,534.70	\$ 3,116,534.70

Construction MBE Goal:	\$ 3,445,943.11	21.00%
Construction MBE to Date:	\$ 1,117,630.24	35.86%

E2 - CAPITAL CIRCLE SE – WOODVILLE HIGHWAY TO TRAM ROAD

Project Status:

The Design-Build Contract was executed on 6/05/07. Utility kick-off meeting was held on 6/27/07. The Pre-construction Conference and the Public Meeting were held on 7/24/07. Joint Project Agreement (JPA) was entered into by St. Joe Company, City of Tallahassee and Blueprint 2000 on 7/31/07. Per terms of this JPA, easements for five drainage ponds and Right-of-Way donated to the project by St. Joe have been obtained from St. Joe. Notice to Proceed was issued to the Design-Build Team on 8/28/07 and the Ground Breaking Ceremony was held on 8/29/07.

The National Features Inventory (NFI) report was approved by the COT Growth Management. The COT GM issued the Environmental Impact Assessment exemption (EIA short form B (low)) for Segments 1 and 3A in October 2007. The EIA for Segment 2 was approved by COT GM on 12/18/07. The Clearing and Grubbing Permit, including "sediment pits" located at the future stormwater pond sites, and fill stockpiling permit, have also been issued by GM for Segments 1 and 3A. The clearing permit for Segment 2 was issued on 1/17/08, with the exception of Pond 600. The clearing permit for Pond 600 was obtained in March 2008. The Stormwater Permit has been received from the Department of Environmental Protection. The EMP permit for Segment 1B was obtained from COT Growth Management on 3/24/08, for Segment 1A on 6/27/08 and for Segment 3A on 8/29/08. The EIA for Segment 3B was approved by Growth Management on 5/08/08. The clearing and grubbing permit for Segment 3B was obtained on 7/11/08.

The Electrical Resistivity Imaging (ERI) testing is complete for Pond 200, Pond 300 conveyance easement and Pond 600. The ERI test results at Pond 200 and Pond 600, and the soil borings at Pond 600 indicated that both ponds' sites are acceptable for pond locations and no further investigations were recommended. Excavation of the "sedimentation sump" has been started at the site of Pond 600.

Utility relocation schedules were prepared and signed by the Utility Companies. Utility relocation work has been in progress since the beginning of February 2008.

Some approved embankment material has been stockpiled on eastbound lanes on Segments 3A, 1A and 1B. Clearing and grubbing was started on Segments 2 and 3B.

Some drainage pipes and structures have been installed on Segment 1B and 1A and further installation is in progress. Temporary traffic signal installation at the Lake at St. Marcos intersection on Woodville Highway is complete.

The Dispute Resolution Board (DRB) meeting was held on 8/26/08.

E2 - CAPITAL CIRCLE SE – WOODVILLE HIGHWAY TO TRAM ROAD

Activities Since Last Period:

1. Addressing Blueprint comments on permitting plans for Segment 2
2. Started storm sewer installation on Segment 1A
3. Started subgrade stabilization on Segment 1B
4. Submitted 100% complete plans for Segments 1A, 1B and 3A to Blueprint for review and comments on 9/02/08
5. Obtained the EMP permit for Segment 3A on 8/29/08
6. Continued construction of the 8" diameter Gravity Sewer
7. Removed Shell Station, including building and underground gas tanks
8. Started excavation of the sedimentation sump at the location of pond 600
9. Conducted DRB meeting on 8/26/08

Planned Activities for Next Period:

1. Conduct CEI progress and utility meeting, DRB meeting and design progress meeting
2. Complete 100% plans for Segments 1A, 1B and 3A after resolution of Blueprint's comments
3. Continue storm sewer installation at Segments 1A and 3A
4. Complete subgrade mixing and stabilization on Segment 1B
5. Continue drainage and roadway design for Segments 2 and 3B
6. Place embankment material stockpiles on Segment 2
7. Coordinate commercial access intersection design revisions with the Sembler Development Company
8. Conduct geotechnical investigations and, if outcome positive, start excavation of sedimentation sump at Pond 100

Significant Issues and Resolutions:

ISSUE

The COT Engineering Department requested price proposals for a permanently installed irrigation system along the corridor of CCSE from Woodville Highway to Tram Road.

RESOLUTION

Blueprint 2000 requested, on the City's behalf, a price proposal from Sandco/Genesis. A price proposal has been received. Subsequently Blueprint 2000 has asked for a more detailed price proposal which has been provided by Sandco, and which is currently under review by COT Engineering Department. Blueprint will continue to monitor the Issue and will prepare a supplemental agreement for additional work for the irrigation system once the agreement between Sandco and the City has been reached.

E2 - CAPITAL CIRCLE SE – WOODVILLE HIGHWAY TO TRAM ROAD
CCSE – Installation of Eight Inch Gravity Sanitary Sewer



E2 - CAPITAL CIRCLE SE – WOODVILLE HIGHWAY TO TRAM ROAD
CCSE – Stockpiling of Embankment Material on Eastbound Lanes



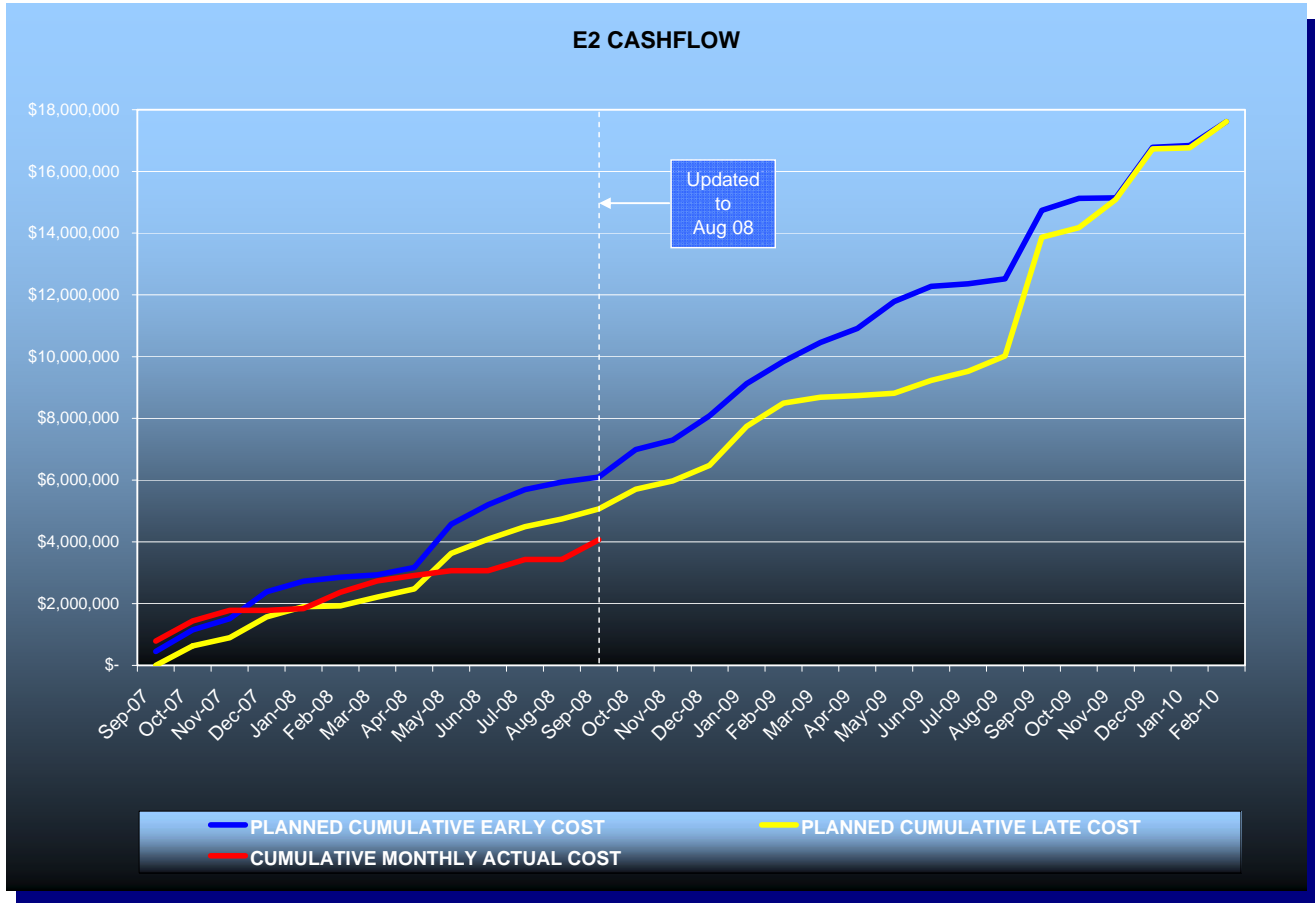
E2 - CAPITAL CIRCLE SE – WOODVILLE HIGHWAY TO TRAM ROAD

CCSE – Stockpiling of Embankment Material

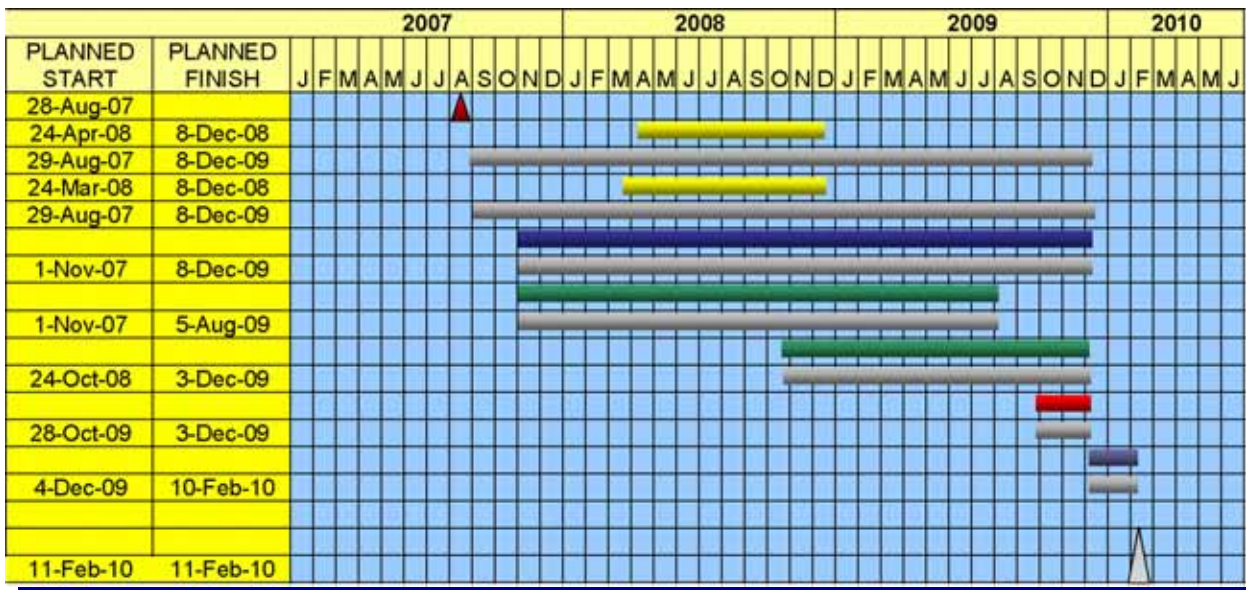


E2 - CAPITAL CIRCLE SE – WOODVILLE HIGHWAY TO TRAM ROAD

Contract Financial Summary of Planned Vs. Actual Costs



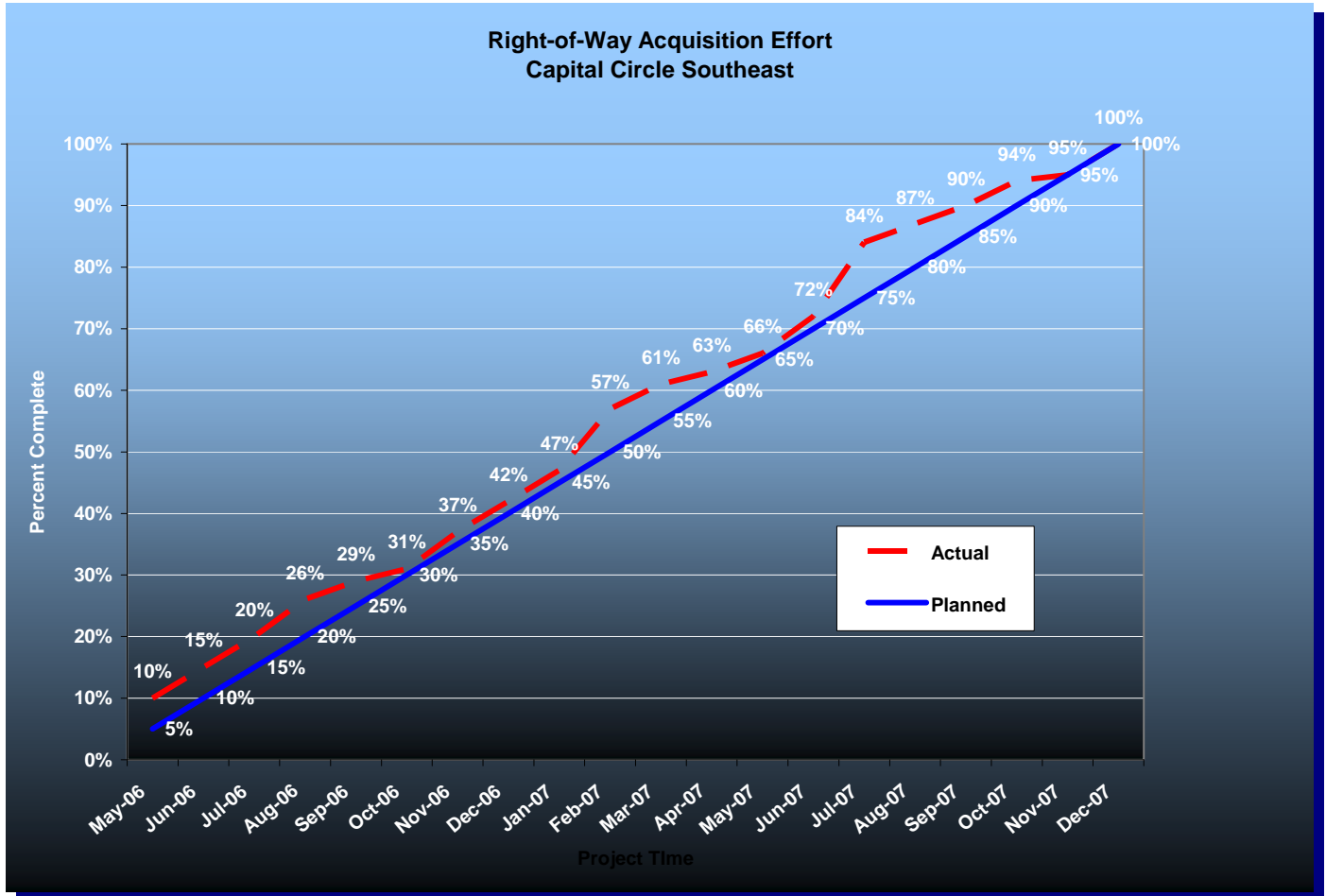
Schedule



E2 - CAPITAL CIRCLE SE – WOODVILLE HIGHWAY TO TRAM ROAD

Right-Of-Way Status Report:

Blueprint is in possession of all parcels. Two parcels are in litigation.



E1 - CAPITAL CIRCLE SE – TRAM ROAD TO CONNIE DRIVE

Project Description:

The proposed 3.44-mile project along Capital Circle Southeast (US 319/SR261) extends from south of Tram Road to Connie Drive (milepost 1.931 and 5.371) in Leon County and includes expanding the existing two-lane undivided rural roadway to a six-lane divided urban (curb and gutter) facility. The purpose of the roadway improvement project is to increase the capacity and safety of the existing highway. New traffic signals, including ITS features, will be provided at six intersections: Tram Road, Shumard Oak Boulevard, Merchants Row Drive, Blair Stone Road, Orange Avenue and Old St. Augustine Road. The project also includes significant landscaping as well as pedestrian, bicycle and recreational amenities.

Project Personnel:

Blueprint 2000:	Program Manager:	David Snyder
	Project Manager:	Marek Romanowski
	Construction Manager:	Marcus Kelly
Joint Venture/PBS&J:	Project Director, JV:	William Mayfield
	Project Mgr., PBS&J:	Steve Martin

Project Status:

Blueprint 2000 issued Final Acceptance Letter for this project on 6/16/08.

Landscaping maintenance and replacement of deficient landscaping items will continue after the Final Acceptance of the project. The Ribbon Cutting Ceremony was conducted 5/21/08.

The total contract duration was 1258 calendar days.

The current construction cost, prior to contract's final estimate, is \$37,800,000.

MBE Participation: Design 18.01% Construction 24.49%

Right-Of-Way Status Report:

Blueprint is in possession of all parcels. One parcel is still in litigation

E1 - CAPITAL CIRCLE SE – TRAM RD TO CONNIE DR

CCSE – The Old St. Augustine Road Intersection Looking South



C2 - CAPITAL CASCADE TRAIL –SEGMENT 2 DESIGN

Project Description:

Within the Capital Cascade Trail, Segment 2 is from Lafayette Street to South Monroe Street.

Project Personnel:

Blueprint 2000:	Planning Manager:	David Bright
	Project Manager:	Gary Phillips
Genesis:	Project Manager:	Mark Llewellyn

Contract Cost & Schedule Status - Agreement No. 533/Authorization LOA - As of 9/9/2008

Contract Commencement:	30May06
Contract Completion:	27Nov08
Percent of Work Performed:	88.0%
Original Contract Amount:	\$ 2,399,652.27
Executed Supplemental Agreements:	\$ 1,105,479.33
Pending Supplemental Agreements:	\$ 0.00
Current Contract Amount:	\$ 3,505,131.60
Invoiced to Date:	\$ 3,100,465.49
Remaining Contract Amount:	\$ 404,666.11
Percent of Contract Amount Complete:	88.5%
Original Contract Time:	519 Days
Contract Time Extensions:	396 Days
Current Contract Time:	915 Days
Contract Time Expended:	833 Days
Contract Time Remaining:	82 Days
Percent Contract Time Expended:	91.0%

Schedule Milestones:

Letter of Authorization	30May06
Submit Design Project Schedule	15Jun06
Workshop #1: Program Formation	15Sep06
Workshop #2: Design Selection	14Sep06
Plan Submittal - 50%	19Oct07
Plan Submittal - 90%	15Sep08
All deliverables completed	27Nov08

C2 - CAPITAL CASCADE TRAIL – SEGMENT 2 DESIGN

Design Subconsultant Participation:	Contract Amt	% of Design Contract	Expended To Date	FY To Date
Archaeological Consultants Inc. <i>Archaeological Services</i>	\$ 33,910.84	0.97	\$ 32,068.67	\$ 1,842.17
Environmental and Geotechnical Specialist <i>Geotechnical</i>	\$ 283,204.89	8.08	\$ 223,633.93	\$ 28,562.75
Akin Associates Architects <i>Architectural</i>	\$ 165,153.38	4.71	\$ 107,515.67	\$ 99,042.38
Moore Bass <i>Land Planning</i>	\$ 4,659.91	0.13	\$ 4,456.16	\$ 0.00
Uzzell Advertising <i>Public Relations</i>	\$ 15,562.61	0.44	\$ 14,062.61	\$ 0.00
Carr, Lynch, Sandell <i>Park Design</i>	\$ 546,805.65	15.60	\$ 433,309.01	\$ 185,188.73
Jennings Environmental <i>Environmental</i>	\$ 34,800.00	0.99	\$ 20,856.78	\$ 3,514.95
Pinnacle Engineering Group <i>MEP</i>	\$ 118,367.72	3.38	\$ 72,066.35	\$ 55,720.94
CDM <i>Stormwater</i>	\$ 183,410.00	5.23	\$ 169,514.95	\$ 75,029.03
Genesis Group <i>Prime</i>	\$ 2,015,172.01	57.49	\$ 1,920,396.77	\$ 590,508.69
PBS&J <i>Water Quality</i>	\$ 32,478.00	0.93	\$ 30,978.00	\$ 30,978.00
Garcia Bridge Engineers <i>Bridge Design</i>	\$ 71,606.59	2.04	\$ 71,606.59	\$ 67,380.37
<hr/>				
Total Design Contract:	\$ 3,505,131.60	100.00%	\$ 3,100,465.49	\$ 1,137,768.01

Design MBE Goal:	\$ 543,295.40	15.50%
Design MBE to Date:	\$ 453,343.63	17.00%

****Please Note: Carr, Lynch and Sandell's contract amount is not contained in the MBE calculation.**

C2 - CAPITAL CASCADE TRAIL – SEGMENT 2 DESIGN

Project Status:

Letter of Authorization #5 and #6 were executed on March 9 and May 30, 2006, respectively. The two LOAs have been combined under Segment 2 Design and Permitting task for a total cost of \$2,399,652.27. Supplemental Agreement #1 was executed on September 18, 2007 for a total of \$1,105,479.33. The new total contract amount is \$3,505,131.60.

Activities Since Last Period:

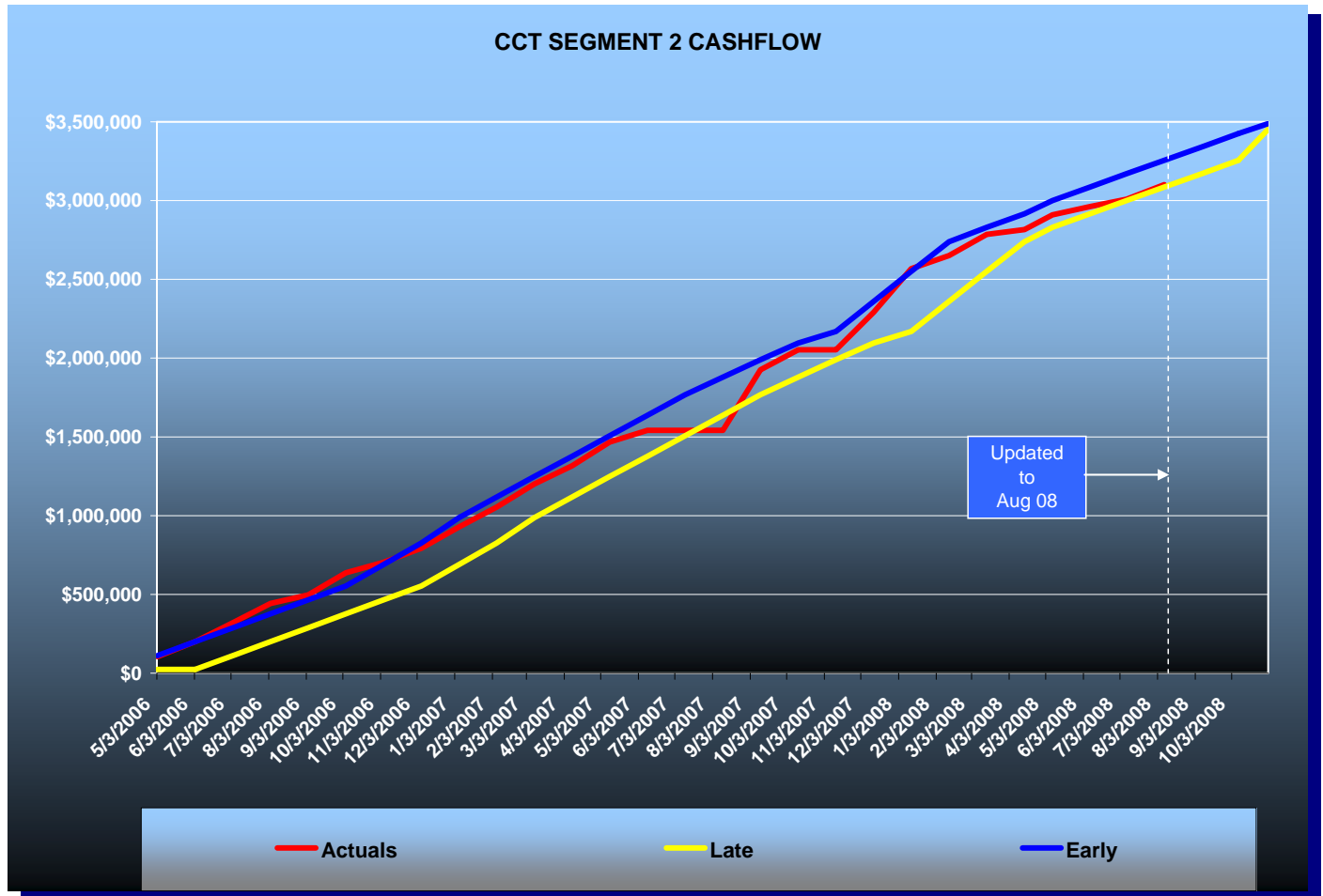
1. Resubmitted Site Plan (third submittal) addressing comments from COT Growth Management
2. Submitted Interim Improvements Feasibility Analysis on Sept. 5
3. Preparing Environmental Variance Board submittal to COT GM for Land Development Code Chapter Six variances
4. Provided "Green Element Update"
5. Completed LOMR and are in the process of submitting to FEMA
6. Finalized IC/RC Report and received conceptual acceptance from FDEP
7. Received Conceptual Utility Plan approval from COT
8. Submitted formal request for a variance to Public Works Design Standards as they relate to the placement of sidewalks along roadways
9. Conducted fundraising meeting with Team
10. Preparing 90% Construction Plans including Technical Specifications and Permit Packages.
11. A meeting was held with DMS regarding Bloxham Street changes and associated issues - BP to prepare information package to FDEP (State Lands) and DMS
12. Design Team provided review of park signage plan
13. Supplemental Agreement #8 was submitted for review
14. A decision was made to save the large Live Oak Tree by the Incinerator Building - this will require an elevated trail and additional retaining walls

Planned Activities for Next Period:

1. Continue to meet with DMS on truncated Meridian Monument and Amphitheatre design and right-of-way needs
2. Continue to coordinate with City Legal on CSX Owners Affidavit
3. Continue to coordinate with City Right-of-Way about unity of title issues and building setback comments
4. Conduct round table meeting with COT/Leon County Stormwater on hydraulic design
5. Initiate JPA with Leon County regarding Lafayette Street Drainage Improvements
6. Coordinate with COT Utilities on Letter Agreement - COT will put together draft agreement
7. Coordinate with COT Electric on cost estimate and beginning relocation work as soon as possible
8. Execute Supplemental Agreement #8
9. Proceed with Cascade Park remediation work
10. Submit CSX re-submittal shortly after 90% Phase III plan submittal
11. Schedule meeting to review Dredge and Fill permit application with FDEP and ACOE
12. COT Commission to hear Linear Infrastructure Variance request
13. COT Environmental Review Board to hear variance request for Chapter 6 items

C2 - CAPITAL CASCADE TRAIL – SEGMENT 2 DESIGN

Contract Financial Summary of Planned Vs. Actual Costs



Right-Of-Way Status Report:

DEP TIIF Lease Agreement has been executed with an effective date of September 1, 2008.

C3 & C4 - CAPITAL CASCADE TRAIL – SEGMENTS 3 AND 4 DESIGN

Project Description:

This project includes 30% design for Segment 3 and Segment 4 of Capital Cascade Trail from South Monroe Street to Springhill Road. A decision will be made by the Intergovernmental Agency in the future as to which Segment will be constructed next and taken to final construction plans.

Project Personnel:

Blueprint 2000:	Planning Manager:	David Bright
	Program Manager:	Dave Snyder
	Project Manager:	Gary Phillips
Kimley-Horn:	Project Manager:	Ward Miller

Contract Cost & Schedule Status - Agreement No. 1736/Authorization LOA #1 - As of 9/9/2008

Contract Commencement:	01Jun08
Contract Completion:	01Mar09
Percent of Work Performed:	28.0%
Original Contract Amount:	\$ 1,125,524.00
Executed Supplemental Agreements:	\$ 0.00
Pending Supplemental Agreements:	\$ 0.00
Current Contract Amount:	\$ 1,125,524.00
Invoiced to Date:	\$ 24,727.32
Remaining Contract Amount:	\$ 1,100,796.68
Percent of Contract Amount Complete:	2.2%
Original Contract Time:	273 Days
Contract Time Extensions:	0 Days
Current Contract Time:	273 Days
Contract Time Expended:	100 Days
Contract Time Remaining:	173 Days
Percent Contract Time Expended:	36.6%

Schedule Milestones:

IMC Approval	27May08
Contract Executed	29May09
All Deliverables	01Mar09

C3 & C4 - CAPITAL CASCADE TRAIL – SEGMENTS 3 AND 4 DESIGN

Design Subconsultant Participation:	Contract Amt	% of Design Contract	Expended To Date	FY Year To Date
Tampa Bay Engineering <i>Utility Investigation</i>	\$ 61,316.00	5.45	\$ 0.00	\$ 0.00
3DS <i>Surveying/Right-of-Way Services</i>	\$ 393,875.00	34.99	\$ 0.00	\$ 0.00
Cheryl Johnson <i>Model Review</i>	\$ 10,200.00	0.91	\$ 0.00	\$ 0.00
Search <i>Historical and Archaeological Resources</i>	\$ 6,796.00	0.60	\$ 0.00	\$ 0.00
In-Situ <i>Stream Gage installation and monitoring</i>	\$ 32,000.00	2.84	\$ 0.00	\$ 0.00
Biological Research & Associates <i>Environmental</i>	\$ 48,500.00	4.31	\$ 0.00	\$ 0.00
CDM <i>Stormwater Modeling and Design</i>	\$ 225,136.00	20.00	\$ 0.00	\$ 0.00
Kimley-Horn <i>Prime - Data Collection, Environmental, Project M</i>	\$ 297,701.00	26.45	\$ 24,727.32	\$ 24,727.32
Environmental and Geotechnical Specialist <i>Geotechnical</i>	\$ 50,000.00	4.44	\$ 0.00	\$ 0.00
<hr/>				
Total Design Contract:	\$ 1,125,524.00	100.00%	\$ 24,727.32	\$ 24,727.32

Design MBE Goal:	\$ 174,456.22	15.50%
Design MBE to Date:	\$ 0.00	0.00%

C3 & C4 - CAPITAL CASCADE TRAIL – SEGMENTS 3 AND 4 DESIGN

Project Status:

Blueprint 2000 has executed a contract with Kimley-Horn and Associates, Inc. (KLH) for a budget not to exceed \$5,144,000. The project design has been broken into consecutive phases that will be individually approved using Letters of Authorization (LOAs). The first Letter of Authorization and Notice to Proceed was approved on May 30 for Phase 1A (total cost of \$1,125,524.00) which includes the following major tasks:

Phase 1A

Survey - topo, utilities

Utilities - conflicts, coordination

Geo-tech, if needed

Field sub-consultant coordination

Environmental - NFI, field assessments, wetland delineations

Optional - Water Quality Sampling Program

Permitability assessment

Hydraulic modeling - model construction, finalize existing conditions

Investigate additional storage sites potential

Activities Since Last Period:

1. Completed survey of all 21 drainage structures
2. Topographic field work about 65% complete
3. Completed cross-sections and sent to CDM
4. Analyzed cross-sections and stream gauge data for model refinement
5. Refined basin delineations
6. Attended FAMU Way Extension public forum
7. Completed wetland delineations and sent line map to 3DS
8. Completed the NFI field work and have begun the assessment and report
9. Attended the TCC and CAC meetings
10. Discussed re-scoping of the next Phase with Blueprint

Planned Activities for Next Period:

1. Attend IA meeting
2. Complete topographic field work
3. Survey wetland boundaries
4. Begin survey office work and QA/QC on field data
5. Provide drainage structure data to CDM
6. Model updates and verification
7. Begin calibration when drainage structure survey is delivered and some additional storm events are recorded
8. Review of the existing Master Plan cultural and archeological information
9. Complete NFI report
10. Possible field meetings with agencies on wetland determinations

MAHAN DRIVE/US 90 – DEMPSEY MAYO ROAD TO I-10 (TIER 1 BLUEPRINT PROJECT)

Project Description:

This project is the reconstruction of the existing two-lane rural roadway to a four-lane urban roadway with bike lanes and sidewalks. The design is being performed by a consultant under FDOT's direction.

Activities Since Last Period:

1. Survey: Survey completed
2. Utilities: Coordinate with City Water and Sewer on JPA goes with project
3. Misc. Structure Plans: Respond to review comments and revise plans for plans update
4. Roadway Plans: Respond to review comments and revise plans for plans update
5. Drainage Design: Respond to review comments and revise plans for plans update
6. Environmental: Approved FDEP Dredge & Fill permit received 8/23/07. Approved FDEP stormwater permit received 9/25/07. A second FDEP stormwater permit received 10/25/07, utilizing the new pond design instead of the GPI Stewart Pond. Approved Leon County permit received 8/21/08
7. Lighting Justification Report: The lighting plans to be prepared by COT
8. Signalization Plans: Respond to review comments and revise plans for plans update
9. Signing and Pavement Marking Plans: Respond to review comments and revise plans for plans update
10. Traffic Study: Queue lengths determined for turn lanes
11. Community Awareness Plan: Public meeting was held at 5:00 PM EST on 04/19/07 at Capital City Christian Church
12. Geotechnical: EGS submitted all required Geotechnical Reports
13. Bridge Plans: FDOT providing Structural plans

Planned Activities for Next Period:

1. Survey: None
2. Utilities: Coordinate with City Water and Sewer on JPA goes with project and submit final plans
3. Misc. Structure Plans: Finalize plans for plans update and submit to FDOT
4. Roadway Plans: LPA to finalize plans for plans update and submit to FDOT
5. Drainage Design: LPA to finalize plans for plans update and submit to FDOT
6. Environmental: LPA to coordinate with Blueprint 2000 and Leon County to address landscape requirement for the Leon County Permit.
7. Lighting Justification: None
8. Signalization Plans: Finalize plans for plans update and submit to FDOT
9. Signing and Pavement Marking Plans: Finalize plans for plans update and submit to FDOT
10. Traffic Study: None
11. Community Awareness Plan: None
12. Geotechnical: Respond to comments if applicable
13. Bridge Plans: Respond to comments if applicable

**MAHAN DRIVE/US 90 – DEMPSEY MAYO ROAD TO I-10
(TIER 1 BLUEPRINT PROJECT)**

Of the \$10,000,000 Blueprint is providing for the construction of Mahan Drive, \$400,000 will be dedicated to permit mitigation for the project. In addition, the first \$600,000 less than the bid amount will be used for permit mitigation. This information is described in the JPA between FDOT and Blueprint 2000.

The action items resolved as of the last Monthly Progress Report (#21) include:

1. Coordination with DRMP and plans update underway.

Action Item List for this month as follows:

<u>Description</u>	<u>Responsible Party</u>
1. Submit final plans to FDOT	LPA

ACRONYMN GLOSSARY

ACOE	Army Corp of Engineers
CAC	Citizens Advisory Committee
CDM	Camp, Dresser & McKee Inc.
CEI	Construction Engineering & Inspection
CLOMR	Conditional Letter of Map Revision
CLS	Carr, Lynch & Sandell
COT	City of Tallahassee
CR	Community Representative
CRCDD	Capital Region Community Development District
CRTPA	Capital Region Transportation Planning Agency
DB	Design-Build
DMS	Department of Management Services
DRB	Dispute Resolution Board
EIA	Environmental Impact Assessment
EIS	Environmental Impact Study
EMP	Environmental Management Permit
ERP	Environmental Resource Permit
ETD	Earned to Date
ETDM	Efficient Transportation Decision Making
FCT	Florida Communities Trust
FDEP	Florida Department of Environmental Protection
FEMA	Federal Emergency Management Agency
FDOT	Florida Department of Transportation
FHWA	Federal Highway Administration
FWC	Florida Fish & Wildlife Conservation Commission
FY	Fiscal Year (For BLUEPRINT 2000, October to September)
GEC	General Engineering Consultant
GM	Growth Management

ACRONYMN GLOSSARY

IA	Intergovernmental Agency
IC/RC	Institutional Controls/Restrictive Covenants
IFB	Invitation For Bid
ITE	Institute of Transportation Engineers
JPA	Joint Participation Agreement
LCPWD	Leon County Public Works Department
LDCA	Location Design Concept Approval
LOA	Letter of Authorization
LOMR	Letter of Map Revision
MBE	Minority Business Enterprise
MOT	Maintenance of Traffic
MSE	Mechanically Stabilized Earthwall
NFI	Natural Features Inventory
NTP	Notice to Proceed
NFWMD	Northwest Florida Water Management District
OT	Order of Taking
PD&E	Project Development and Environment
ROW	Right-of-Way
SFMP	Stormwater Facility Management Plan
SHPO	State Historic Preservation Officer
SOS	Scope of Services
SUE	Subsurface Utility Excavation
TCC	Technical Coordinating Committee
TIITF	Trustees of the Internal Improvement Trust Fund
UAO	Utility Agency Owner
USFS	United States Forest Service
USFWS	US Fish and Wildlife Service
VE	Value Engineering
YTD	Year to Date