

September 2007

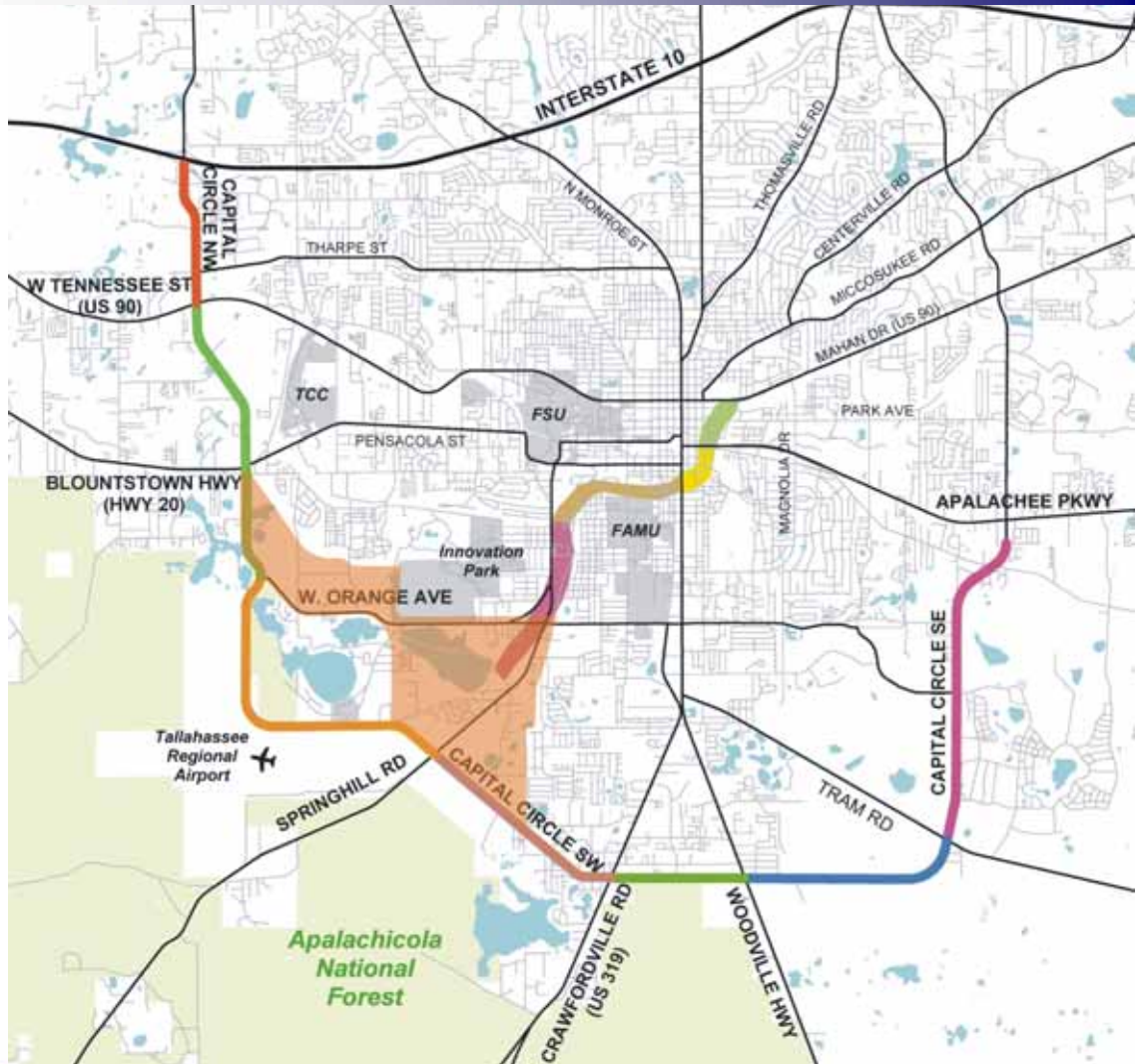


TABLE OF CONTENTS

I. Monthly Progress Reports

	<u>Page</u>
GEC – General Engineering Consultant	1
GEC – Public Involvement	5
N1 - Capital Circle NW – I-10 to US 90	6
N2 - Capital Circle NW/SW – SR 371 (Orange Avenue) to US 90	12
W1 - Capital Circle SW – Crawfordville Road to SR 20	17
E3 - Capital Circle SE – Woodville Hwy to Crawfordville Rd.....	21
E2 - Capital Circle SE – Woodville Highway to Tram Road	25
E1 - Capital Circle SE – Tram Road to Connie Drive.....	29
C2 - Capital Cascade Trail –Segment 2 Design.....	38
Mahan Drive/US 90 – Dempsey Mayo Road to I-10 (Tier 2 Blueprint Project).....	42

GEC – GENERAL ENGINEERING CONSULTANT

Project Description:

General Engineering Consultant Contract for the Blueprint Intergovernmental Agency. The LPA Group Incorporated is the Prime Consultant with Jacobs Civil, Incorporated as the major subconsultant. Twelve additional subconsultants, seven of which are MBE firms, make up the LPA/Jacobs Blueprint GEC Management Team.

Key Personnel:

Program Manager: Steve Nichols – The LPA Group
 Design Manager: Marek Romanowski - The LPA Group

Contract Cost & Schedule Status – Contract 597

Original Contract Amount:	\$	7,494,493.00
Fiscal Year Re-Authorization:	\$	4,525,519.00
Executed Supplemental Agreements:	\$	0.00
Pending Supplemental Agreements:	\$	0.00
Current Contract Amount:	\$	12,020,012.00
Invoiced to Date:	\$	9,726,235.96
Remaining Contract Amount:	\$	2,293,776.04
Percent of Contract Amount Complete:		80.9%

GEC – GENERAL ENGINEERING CONSULTANT

Subconsultant Participation:	Contract Amt	% of GEC Contract	Expended To Date	Year To Date
Moore Bass Consulting <i>Stormwater & Landscaping</i>	\$ 170,677.00	1.42	\$ 89,748.43	\$ 21,372.00
Pope Environmental <i>Environmental Services</i>	\$ 211,276.00	1.76	\$ 138,690.00	\$ 13,687.50
OLH International <i>Program Controls</i>	\$ 1,363,231.00	11.34	\$ 1,317,646.54	\$ 198,579.29
Katherine Beck Consulting <i>Government Relations</i>	\$ 45,000.00	0.37	\$ 27,242.44	\$ 6,400.00
Quest Corporation of America <i>Public Involvement</i>	\$ 592,959.00	4.93	\$ 413,778.59	\$ 119,310.09
Uzzell Advertising <i>Public Relations, Web Maint.</i>	\$ 217,405.00	1.81	\$ 275,588.96	\$ 75,762.00
Welch & Ward Architects <i>Architecture, Recreation Facilities</i>	\$ 0.00	0.00	\$ 0.00	\$ 0.00
THC Right-of-Way Services, Inc. <i>R/W appraisal and acquisition</i>	\$ 2,379,149.00	19.79	\$ 1,545,957.84	\$ 753,345.41
Berryman & Henigar <i>Survey and mapping</i>	\$ 326,406.00	2.72	\$ 163,292.96	\$ 35,159.09
Weigal - Veasey <i>Property Appraisal</i>	\$ 0.00	0.00	\$ 0.00	\$ 0.00
Williams Earth Sciences <i>Geotechnical Services</i>	\$ 0.00	0.00	\$ 4,286.78	\$ 0.00
Allen Nobles & Associates <i>Survey</i>	\$ 0.00	0.00	\$ 73,726.00	\$ 0.00
THE LPA GROUP (PRIME) <i>Prime Consultant</i>	\$ 3,444,733.00	28.66	\$ 3,247,059.27	\$ 891,083.34
JACOBS (PRIME SUB) <i>Prime Subconsultant</i>	\$ 3,269,176.00	27.20	\$ 2,429,218.15	\$ 793,156.56
Total Contract:	\$ 12,020,012.00	100.00%	\$ 9,726,235.96	\$ 2,907,855.28

MBE Goal:	\$ 1,863,101.86	15.50%
MBE to Date:	\$ 2,262,694.96	23.26%

GEC – GENERAL ENGINEERING CONSULTANT

Activities Since Last Period:

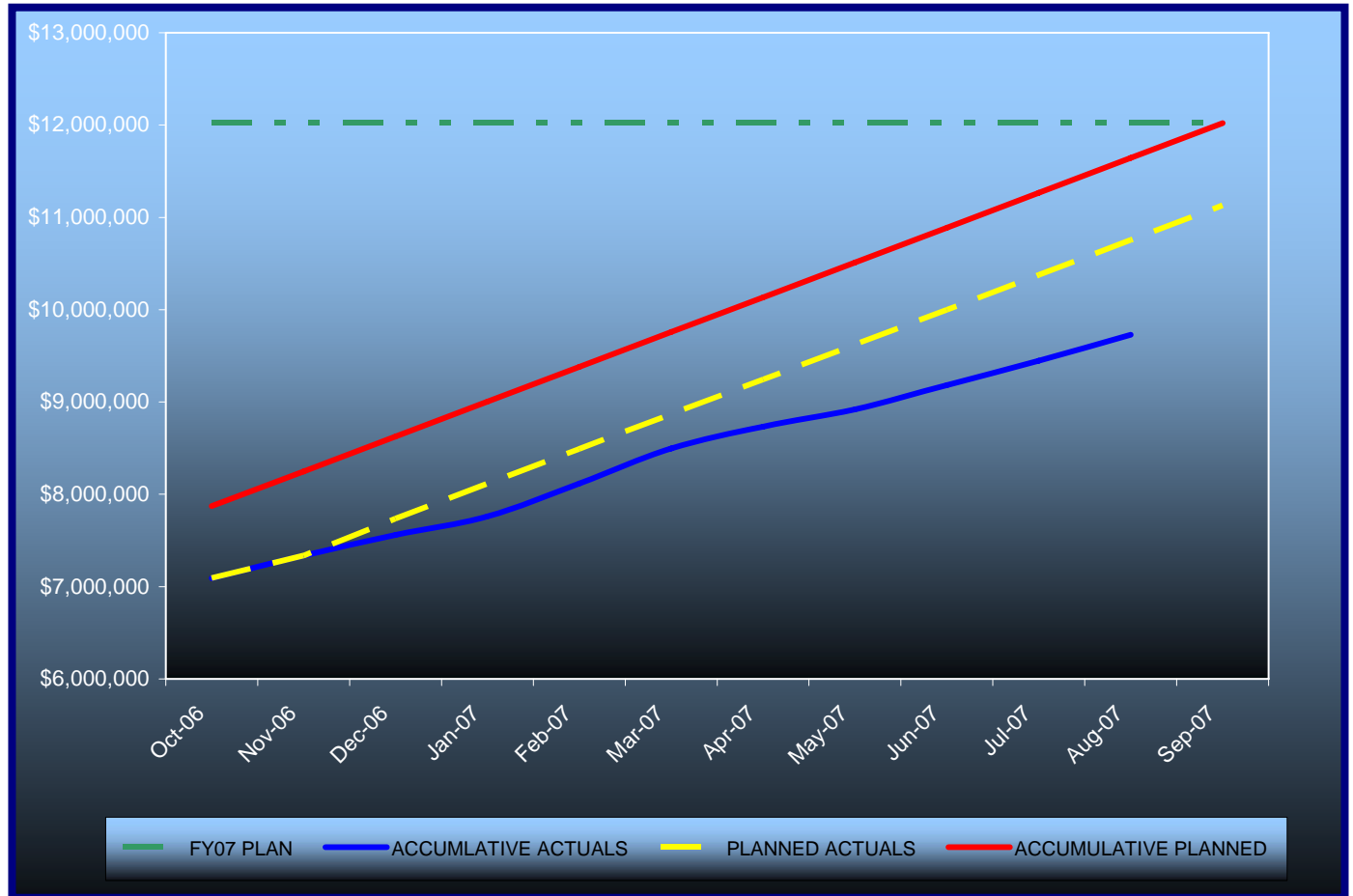
1. Attended regular meetings and held Transfer meeting for N1-CCNW
2. Performed Final Acceptance of N1 and initiated warranties
3. Received 60% Landscape Plans for Regional Pond 1 and put in review
4. Preparing SOS for Right-of-Way Monumentation
5. Removed Channeled Apple Snails from Regional Pond 1
6. Received 120 day grant extension from NFWMD
7. Preparing for Ribbon Cutting Ceremony September 26th
8. Submitted for FDEP Stormwater Permit for N2-CCNW/SW
9. Finalized Evaluation Criteria and weighting for W1-CCSW
10. Ground Breaking for E2 August 29th
11. Acquired Permits for Clearing and Stormwater Design for E2-CCSE
12. Obtained light pole approval for FDOT for E1-CCSE
13. Secured personnel for scheduling position with OLH

Planned Activities for Next Period:

1. Develop Maintenance Responsibility Map for N1-CCNW Transfer
2. Advertise Landscaping contract at Regional Pond 1
3. Receive 50% Plans for Capital Cascade Park
4. Continue Coordination on Mahan Drive and Orange Avenue projects
5. Continue Acquisition activities on N2-CCNW/SW
6. Prepare RFQ for Capital Cascade Trail, Segments 3 & 4
7. Continue to develop construction strategy for Cascade Park
8. Continue to develop transfer model for E1-CCSE and N1-CCNW

GEC – GENERAL ENGINEERING CONSULTANT

GEC Contract Financial Summary of Planned Vs. Actual Costs – FISCAL YEAR 2007



GEC – PUBLIC INVOLVEMENT

Activities Since Last Period:

1. Prepared Presentation Handout for Tallahassee Philanthropic Educational Organization
2. Prepared Presentation for Co-Chair for Cascade Park Amenities Fundraising
3. Organized and held Groundbreaking Ceremony for E2-CCSE
4. Participated in Capital Cascade Park Field Tour
5. Continued to coordinate restructuring of web site
6. Developed new project location map
7. Prepared presentation for ITE Meeting
8. Prepared and distributed press release for bond rating upgrade
9. Continued to prepare GEC Annual Performance Report

Planned Activities for Next Period:

1. Prepare list of PDF files on web site for development of search database
2. Continue to coordinate restructuring of web site
3. Organize and hold Ribbon Cutting Ceremony for N1-CCNW
4. Prepare GEC Annual Performance Report and Presentation
5. Prepare Presentation for City of Gainesville
6. Prepare Marketing Brochure for CCT-2
7. Organize Public Workshop/Field Tour for CCT-2
8. Prepare Press Release for bond sale



N1 - CAPITAL CIRCLE NW – I-10 TO US 90

Project Description:

The proposed 1.991-mile roadway project (FPID: 219722-1) consists of upgrading the existing undivided rural facility to a six-lane divided urban (curb and gutter) facility. Upgrades to the West Tennessee, Tharpe, Hartsfield and Commonwealth intersections will also be included. The purpose of the roadway improvement project is to increase the capacity and safety of the existing highway. The roadway project was designed, let and constructed by the Florida Department of Transportation, with advance funding provided by the Blueprint 2000 Intergovernmental Agency.

CCNW – Tennessee Street (US90) Looking south from Tharpe Street Intersection



N1 - CAPITAL CIRCLE NW – I-10 TO US 90

MONTHLY PROJECT STATUS REPORT						
Week Ending 09/09/2007						
PROJECT ADMINISTRATION INFORMATION						
FINANCIAL PROJECT NO.:		219722-1-52-01 & 02		RESIDENT ENGINEER:		Steve Martin, P.E.
CONTRACT NO.:		T3154		PROJECT ADMINISTRATOR:		Jerry McClure
FEDERAL AID NO.:		N/A		CONTRACTOR:		M of Tallahassee, Inc.
ORIGINAL CONTRACT AMOUNT (A) Bid:		\$25,462,923.43		CURRENT CONTRACT AMOUNT:		\$25,364,081.84
COUNTY:		LEON		DESIGN FIRM		FDOT Roadway Design
DESCRIPTION: SR 263 (Capital Circle NW) from a Pt S of SR 10 (US90/W Tennessee St) to the SR 8 (I-10)						
West ramp						
CONTRACT TIME SUMMARY			PROGRESS SUMMARY		CURRENT	PREVIOUS
ORIGINAL DAYS	825		PLANNED		86.44%	82.20%
WEATHER	32		ACTUAL		100.00%	92.98%
GRANTED (S.A.)	0		CONTRACT TIME USED		82.73%	79.42%
GRANTED (F.S.A.)	0		EXPLANATION:			
GRANTED (OTHER)	0					
TOTAL CONTRACT	857					
DAYS USED	709		DATE SUMMARY			
TOTAL REMAINING	148		CONTRACT EXECUTED		8/15/2005	
SUSPENSION DAYS	0		NOTICE TO PROCEED		9/14/2005	
PENDING DAYS	0		CONTRACT START DATE		9/26/2005	
NUMBER OF AVAILABLE WORK DAYS THAT CONTRACTOR ELECTED TO PERFORM NO WORK	180		DATE WORK STARTED		9/26/2005	
			FINAL ACCEPTED		9/4/2007	
			CONTRACT TIME EXPIRATION		1/30/2008	
GRANTED DAYS SUMMARY						
STATUS	REASON					NUMBER OF DAYS
Approved	Weather Days Granted by Weather Letter No. 3					3
Approved	Weather Days Granted by Weather Letter No. 4					4
Approved	Weather Days Granted by Weather Letter No. 5					2
Approved	Weather Days Granted by Weather Letter No. 6					1
Approved	Weather Days Granted by Weather Letter No. 8					4
Approved	Weather Days Granted by Weather Letter No. 10					4
Approved	Weather Days Granted by Weather Letter No. 13					4
Approved	Weather Days Granted by Weather Letter No. 15					3
Approved	Weather Days Granted by Weather Letter No. 16					3
Approved	Weather Days Granted by Weather Letter No. 17					2
Approved	Weather Days Granted by Weather Letter No. 23					2
TOTAL NUMBER OF DAYS						32
SUPPLEMENTAL AGREEMENT SUMMARY						
SA #	# DAYS	Sub. Date	Exe. Date	Status	Reason/Description	Amount
006	0	8/1/2006	7/21/2006	Approved	July 2005 Asphalt Specification Change	-\$23,382.06
009	0	9/7/2006	9/25/2006	Approved	Unilateral Pymt. - Add'l MOT	\$19,238.72
008	0	9/14/2006	10/3/2006	Approved	RWZPM's	\$20,921.80
012	0	1/8/2007	1/30/2007	Approved	Additional Water & Sewer Utilities	\$21,005.00
013	0	1/6/2007	1/29/2007	Approved	Base Group 9 - Limerock	-\$132,971.25
016	0	3/6/2007	3/6/2007	Approved	Type 1 Underdrain	\$56,000.00
017	0	3/15/2007	3/13/2007	Approved	Contingency Supplemental Agreement	\$150,000.00
018	0	4/4/2007	3/23/2007	Approved	Add'l Sewer Services - COT - @ Carroll's Boot Country	\$15,675.00
019	0	7/30/2007	8/2/2007	Approved	Roadway Construction Limit & Pay Item Adj.	-\$225,328.80
						-\$98,841.59

N1 - CAPITAL CIRCLE NW – I-10 TO US 90

CCNW – Completed Stormwater Facility Regional Pond 1



N1 - CAPITAL CIRCLE NW – I-10 TO US 90

CCNW- I-10 Interchange Looking South



N1 - CAPITAL CIRCLE NW – I-10 TO US 90

Project Status:

As of September 4th, 2007: PROJECT WAS FINAL-ACCEPTED BY FDOT ON 9-4-2007:

709 of 857 Total Contract Days were used (857 Total Days include 32 Weather Days Granted to date);

Planned Progress = 85%

Actual Progress = 100%

Contract Time used = 82.7%

Contract Executed on 8/15/05;

Notice To Proceed on 9/14/05;

Contract Start Date on 9/26/05;

Final Acceptance Date = 9/4/07

Contract Time expiration = 12/29/07(*)

(*) The Contractor has completed the project early, and has earned an early-finish incentive bonus as allowed by Contract. Based on the FDOT-approved CEI recommendation for Final Acceptance occurring on 9/4/07, this Bonus Value is 115 Days @ \$3500/Day = \$402,500.00

PRELIMINARY FINANCIAL STATUS AS OF 9/4/07 (NOTE THAT FINAL-ESTIMATE COSTS ARE BEING REVIEWED NOW, TO BE COMPLETED AROUND 9/21/07).

Original Contract Amount = \$25,462,923.43

New Contract Amount = \$25,368,281.84(*)

(*) The CEI and FDOT are currently finalizing-out applicable changes for supplemental agreements and work orders, remaining un-used contingency funds, unilateral adjustments, fuel & bituminous adjustments and composite pay factor adjustments. The TENTATIVE Total Contract Amount as of 9/4/07 is approximately \$25.7 Million. However this amount includes the City of Tallahassee JPA amount of \$1,290,120.00, of which an un-used portion still remains (THIS IS NON-BP2K MONEY). Also, approximately \$90K of the \$150K Contingency budget still remains, all of which will be deducted from the Tentative Total Amount.

The Net anticipated BP2K final estimate cost, (including DEDUCTION of the COT/JPA funds), inclusion of all contract adjustments, and inclusion of the \$402,500 incentive-bonus will be about \$24.8 Million.

N1 - CAPITAL CIRCLE NW – I-10 TO US 90

Right-Of-Way Status Report:

CLOSED - (IN POSSESSION)	100
AGREEMENTS SECURED BUT NOT CLOSED	21
DONATION	4
NEGOTIATING/PREPARING FOR SUIT	0
TOTAL PARCELS ON PROJECT	125

As of August 2007 FDOT reported:

1. Right of Way cost expended so far is approximately \$44,977,288
2. There are 20 parcels remaining to be settled through mediation
3. The total Right-of-Way cost is estimated to be \$47,831,058

N2 - CAPITAL CIRCLE NW/SW – SR 371 (ORANGE AVE.) TO US 90

Project Description:

The Expanded Project Development and Environment (PD&E) Study limits for this 2.9 mile project extend from Tennessee Street (US 90/SR 10) to Orange Avenue (SR 371). The purpose of this roadway improvement project is to increase the capacity and safety of the existing highway by expanding the existing two-lane undivided rural roadway to a six-lane divided urban (curb and gutter) facility. New traffic signals will be provided at Orange Avenue, Blountstown Highway and Gum Road Intersections. The project also includes significant landscaping as well as pedestrian, bicycle and recreational amenities. This project will develop final design plans for construction.

Project Personnel:

Blueprint 2000:	Program Manager:	Steve Nichols
	Construction Manager:	Marcus Kelly
	Project Manager:	Marek Romanowski
H.W. Lochner:	Project Manager:	Hugh Williams

Contract Cost & Schedule Status - Agreement No. 772/Authorization 1 - As of 9/11/2007

Contract Commencement:	10May04
Contract Completion:	10May07
Percent of Work Performed:	90.0%
Original Contract Amount:	\$ 1,921,585.90
Executed Supplemental Agreements:	\$ 1,195,430.90
Pending Supplemental Agreements:	\$ 0.00
Current Contract Amount:	\$ 3,117,016.80
Invoiced to Date:	\$ 2,805,901.08
Remaining Contract Amount:	\$ 311,115.72
Percent of Contract Amount Complete:	90.0%
Original Contract Time:	1095 Days
Contract Time Extensions:	160 Days
Current Contract Time:	1255 Days
Contract Time Expended:	1219 Days
Contract Time Remaining:	36 Days
Percent Contract Time Expended:	97.1%

Schedule Milestones:

30% Roadway Plans	28Aug06
Final Environmental Documents	20Jun06
Final Preliminary Engineering Report	20Jun06
60% Roadway Plans	20Apr07
2nd Draft ROW Maps	30Apr07
Final ROW Maps	30Sep07
Location Design Concept Approval (LDCA)	22Aug06
VE Complete	27Oct06

N2 - CAPITAL CIRCLE NW/SW – SR 371 (ORANGE AVE.) TO US 90

Design Subconsultant Participation:	Contract Amt	% of Design Contract	Expended To Date	Year To Date
Environmental Geotechnical Specialists <i>Geotechnical</i>	\$ 444,860.75	14.27	\$ 335,783.10	\$ 278,851.92
Diversified Design & Drafting Services, Inc. <i>Survey and R/W Mapping</i>	\$ 688,044.64	22.07	\$ 602,088.46	\$ 412,801.37
Archaeological Consultants, Inc. <i>Cultural Resource Assessment</i>	\$ 19,588.27	0.63	\$ 10,947.15	\$ 547.36
HNTB/TEI <i>Traffic Analysis</i>	\$ 90,310.59	2.90	\$ 90,310.59	\$ 11,606.21
American Acquisition Group <i>Right of Way</i>	\$ 97,873.48	3.14	\$ 94,046.22	\$ 8,071.70
HW LOCHNER (PRIME) <i>Prime Consultant</i>	\$ 1,776,339.07	56.99	\$ 1,539,735.93	\$ 876,689.76
<hr/>				
Total Design Contract:	\$ 3,117,016.80	100.00%	\$ 2,672,911.45	\$ 1,588,568.32

Design MBE Goal:	\$ 483,137.60	15.50%
Design MBE to Date:	\$ 948,818.71	35.50%

Project Status:

Conducting pond and mitigation analysis and design. Pond and mitigation area surveys continue. Preliminary geotechnical investigations for road design and structures are underway. 50% roadway plans were submitted to Blueprint on 5/10/2007. Proceeding toward full 60% plans submittal in October, 2007. Initiated utility coordination by sending plans to utility companies and conducting utility coordination meeting on 8/02/07. Prepared and submitted storm water drainage permit application to the Florida Department of Environmental Protection in July, 2007.

ROW acquisition process is on-going.

N2 - CAPITAL CIRCLE NW/SW – SR 371 (ORANGE AVE.) TO US 90

Activities Since Last Period:

1. Continued to update roadway plans and to develop full 60% plans submittal
2. Continued analysis and design of the pond and mitigation sites
3. Continued boundary and topo survey and geotechnical investigation at the mitigation sites
4. Submitted finalized Natural Features Inventory report to Leon County Growth Management
5. Reviewed pavement design final package and provided comments
6. Continued utility relocation coordination
7. Reviewed final CSX Railroad Bridge Development Report (BDR) and forwarded it to FDOT District 3
8. Continued work on ROW map revisions, parcel legal descriptions and sketches
9. Submitted the Stormwater Permit application to Florida Department of Environmental Protection (DEP)

Planned Activities for Next Period:

1. Complete preparation of the 60% roadway and drainage plans and submit them to Blueprint
2. Complete survey and geotechnical report
3. Continue to assist with ROW acquisition
4. Submit pavement design package to FDOT after final Blueprint comments resolution
5. Continue the pond and mitigation design and permit package and continue preparation of the Environmental Impact Assessment (EIA) permit application
6. Continue utility relocation coordination
7. Revise and resubmit application for the FDEP Stormwater permit to DEP
8. Finalize the Gum Creek Bridge Hydraulic Report and Bridge Development Report

Significant Issues and Resolutions:

ISSUE

Regional Pond #1

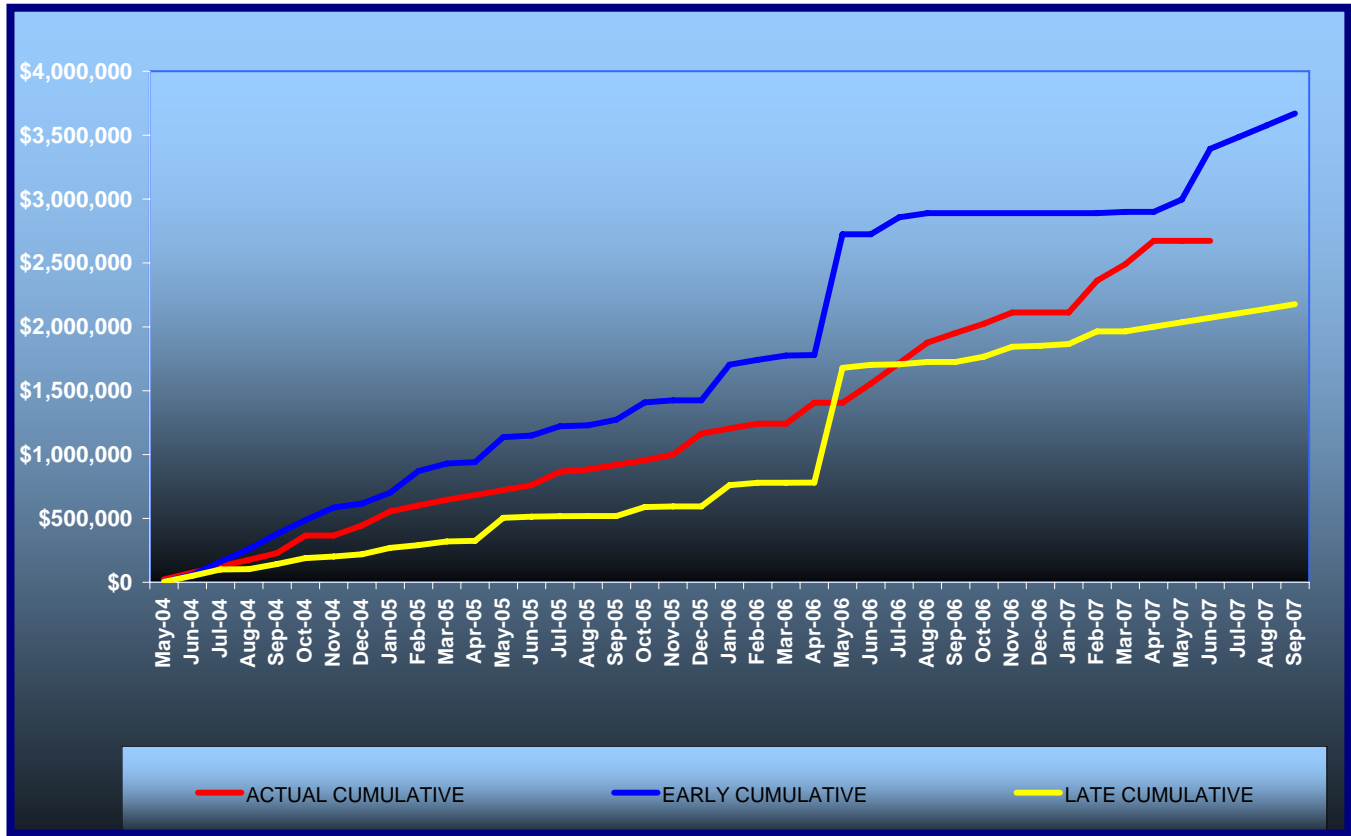
Additional compensating treatment volume will be needed to cover from CSX RR to Shuler Road.

RESOLUTION

Determining the treatment volume needed through coordination with DEP and County Growth Management

N2 - CAPITAL CIRCLE NW/SW – SR 371 (ORANGE AVE.) TO US 90

Contract Financial Summary of Planned Vs. Actual Costs



N2 - CAPITAL CIRCLE NW/SW – SR 371 (ORANGE AVE.) TO US 90

Right-Of-Way Status Report:

CLOSED - (IN POSSESSION)	2
AGREEMENTS SECURED BUT NOT CLOSED	1
DONATION	0
NEGOTIATING/PREPARING FOR SUIT	135
TOTAL PARCELS ON PROJECT	138

Blueprint continues to receive parcel appraisals, and the review appraisals; and offers are being made.

W1 - CAPITAL CIRCLE SW – CRAWFORDVILLE ROAD TO SR 20

Project Description:

A Project Development and Environment (PD&E) Study of Capital Circle (SR 263) between Crawfordville Road (SR 61 US 319) and Blountstown Highway (SR 20) a distance of approximately 6.7 miles. The PD&E study is being conducted in accordance with Federal Highway Administration (FHWA), Blueprint 2000 Agency, and Florida Department of Transportation (FDOT) guidelines. The study evaluates alternative alignments as well as the existing alignment. Several viable alternatives are being developed and evaluated in order to address the project needs while taking into account the Blueprint 2000 & Beyond "Project Definitions Report", prepared by the Economic and Environmental Consensus Committee in 1999, and the Lake Bradford Sector Plan, conducted by the Tallahassee/Leon County Planning Department.

Project Personnel:

Blueprint 2000:	Planning Manager:	Dave Bright
	Project Manager:	Gary Phillips (Interim)
Kimley-Horn & Assoc.:	Project Manager:	Steve Godfrey/Raymond Ashe

Contract Cost & Schedule Status - Agreement No. 1284/Authorization 1 - As of 9/12/2007

Contract Commencement:	22Aug06
Contract Completion:	22Aug09
Percent of Work Performed:	41.0%

Original Contract Amount:	\$ 2,672,271.68
Executed Supplemental Agreements:	\$ 0.00
Pending Supplemental Agreements:	\$ 0.00
Current Contract Amount:	\$ 2,672,271.68
Invoiced to Date:	\$ 1,109,600.96
Remaining Contract Amount:	\$ 1,562,670.72
Percent of Contract Amount Complete:	41.5%

Original Contract Time:	1096 Days
Contract Time Extensions:	0 Days
Current Contract Time:	1096 Days
Contract Time Expended:	386 Days
Contract Time Remaining:	710 Days
Percent Contract Time Expended:	35.2%

Schedule Milestones:

Consultant Selected	26May06
Study Begins	22Aug06
Agency Kick-off Meeting	19Oct06
Public Kick-off Meeting	19Oct06
Community Mini-Charrettes	15Jan07
Community Meeting	12Apr07
Corridor/Concepts Charrette	10May07
Alternatives Public Information Meeting	07Apr08
Preferred Alternative Public Meeting	10Dec08
Public Hearing	01Jun09

W1 - CAPITAL CIRCLE SW – CRAWFORDVILLE ROAD TO SR 20

Design Subconsultant Participation:	Contract Amt	% of Design Contract	Expended To Date	Year To Date
Target Copy and Sign Printers				
<i>Printing</i>	\$ 30,000.00	1.12	\$ 20,542.18	\$ 20,542.18
Keystone Field Services				
<i>Relocation</i>	\$ 35,000.00	1.31	\$ 0.00	\$ 0.00
Environmental and Geotechnical Specialists				
<i>Geotech</i>	\$ 59,830.00	2.24	\$ 28,995.60	\$ 28,995.60
Diversified Design & Drafting Services				
<i>Survey</i>	\$ 127,874.94	4.79	\$ 0.00	\$ 0.00
StategyWise, LLC				
<i>Economic Development</i>	\$ 19,500.00	0.73	\$ 0.00	\$ 0.00
Hamilton Smith Assoc.				
<i>Traffic</i>	\$ 18,600.00	0.70	\$ 18,600.00	\$ 18,600.00
Registe, Sliger Engineering				
<i>Structures</i>	\$ 123,376.71	4.62	\$ 27,266.25	\$ 27,266.25
KIMLEY-HORN & ASSOC (PRIME)				
<i>Prime</i>	\$ 1,596,614.64	59.75	\$ 726,721.16	\$ 726,721.16
Dr. Wayson				
<i>Noise</i>	\$ 30,147.25	1.13	\$ 0.00	\$ 0.00
Hass Center				
<i>Economic Development</i>	\$ 37,200.00	1.39	\$ 0.00	\$ 0.00
Florida Acquisition & Appraisal				
<i>Appraisal/Acquisition</i>	\$ 235,804.91	8.82	\$ 118,678.50	\$ 118,678.50
Biological Research Assoc.				
<i>Water Quality</i>	\$ 105,815.50	3.96	\$ 51,315.28	\$ 51,315.28
Search, Inc				
<i>Cultural Resource/Archaeological</i>	\$ 53,826.73	2.01	\$ 0.00	\$ 0.00
Camp, Dresser & McKee				
<i>Drainage & Pond Design</i>	\$ 198,681.00	7.43	\$ 117,481.98	\$ 117,481.98
<hr/>				
Total Design Contract:	\$ 2,672,271.68	100.00%	\$ 1,109,600.95	\$ 1,109,600.95

Design MBE Goal:	\$ 414,202.11	15.50%
Design MBE to Date:	\$ 95,404.03	8.60%

W1 - CAPITAL CIRCLE SW – CRAWFORDVILLE ROAD TO SR 20

Project Status:

Kimley-Horn and Associates began the Capital Circle Southwest PD&E study in late August, 2006.

The Public and Agency Kickoff Meetings were conducted in October, 2006.

Six Community Forum Meetings were conducted concluding with a Town Hall Meeting held in April, 2007.

The Concept Charrettes were held on May 10th and 12th, 2007.

Eight Community Representatives meetings have been held through the month of August 2007.

The project has begun the analysis phase using the alternatives alignments established through the Concept Charrette process.

Activities Since Last Period:

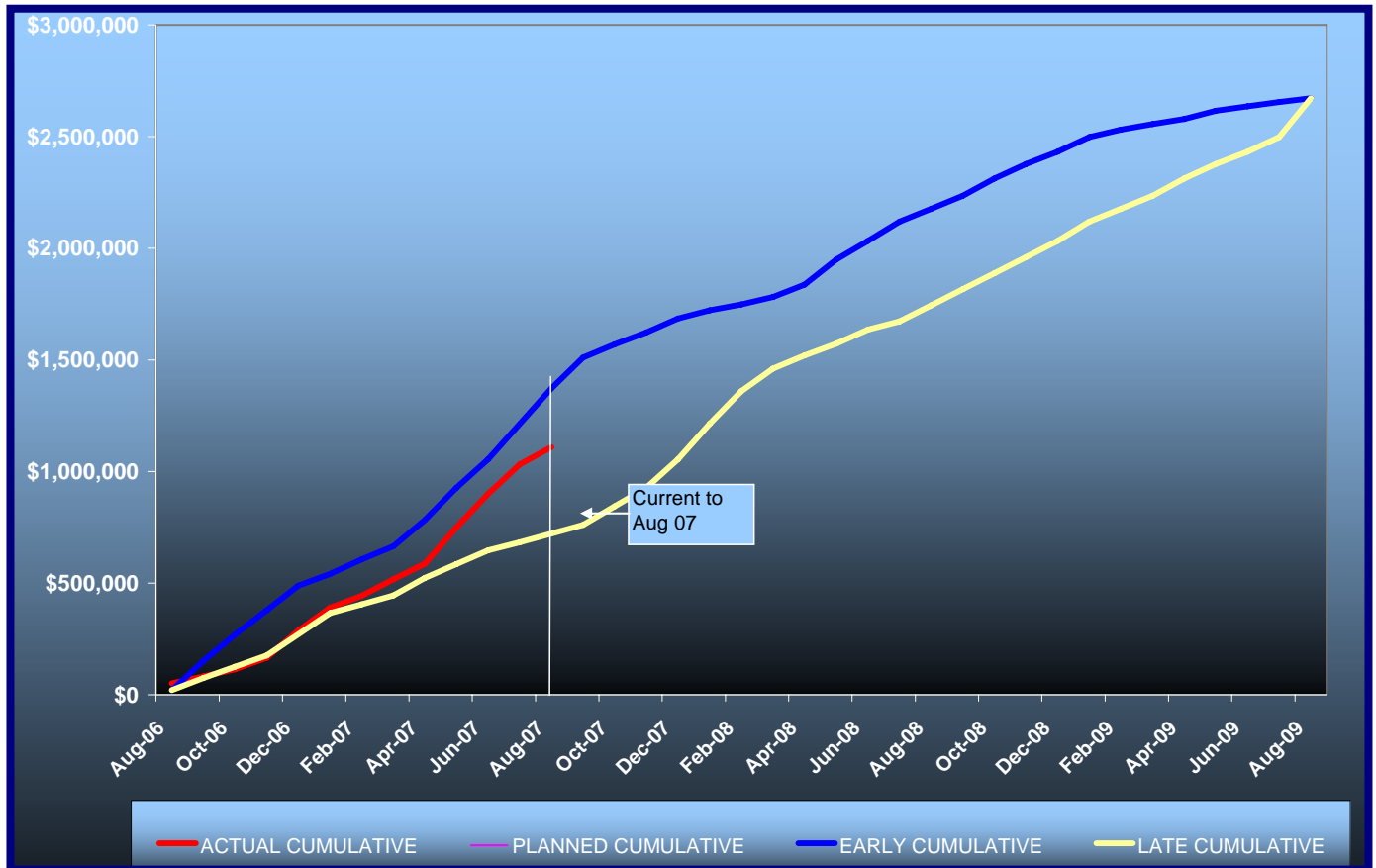
1. Updated Web Site
2. Coordinated with FDOT District 3 and FHWA on project status
3. Continued refinement of alternative alignments
4. Continued identifying and evaluating water treatment areas
5. Prepared for and presented IA, CAC and TCC meetings
6. Continued intersection and access analysis
7. Continued environmental field analysis for endangered species, wetlands and other natural features
8. Prepared typical section package
9. Continued preparation of environmental documentation
10. Continued data collection for socio-economic and physical features

Planned Activities for Next Period:

1. Preparation of draft newsletter
2. Prepare for CR #9 meeting
3. Prepared ETDM review materials
4. Continue refining alternative alignments
5. Continue refining water treatment area locations
6. Finalize Typical Section Package for submittal
7. Continue intersection layout alternatives
8. Continue preparation of pre-draft environmental reports; endangered species, wetlands and natural features
9. Continue water level monitoring Black Swamp
10. Preliminary noise assessment

W1 - CAPITAL CIRCLE SW – CRAWFORDVILLE ROAD TO SR 20

Contract Financial Summary of Planned Vs. Actual Costs



E3 - CAPITAL CIRCLE SE – WOODVILLE HWY TO CRAWFORDVILLE RD

Project Description:

This project proposes to widen approximately 1.53 miles of the existing two-lane Capital Circle SE from Woodville Highway to Crawfordville Road to an ultimate multi-lane urban facility.

FDOT Roadway ID: 55002000 SR 263 from MP 0.200 to MP 1.730.

Project Personnel:

Blueprint 2000:	Design Manager:	Marek Romanowski
	Project Manager:	Gary Phillips
URS Corporation:	Project Manager:	Chris Lovett

Contract Cost & Schedule Status - Agreement No. 1167/Authorization 1 - As of 9/12/2007

Contract Commencement:	02Feb06
Contract Completion:	30Oct07
Percent of Work Performed:	98.0%
Original Contract Amount:	\$ 885,689.21
Executed Supplemental Agreements:	\$ 49,905.00
Pending Supplemental Agreements:	\$ 0.00
Current Contract Amount:	\$ 935,594.21
Invoiced to Date:	\$ 856,617.16
Remaining Contract Amount:	\$ 78,977.05
Percent of Contract Amount Complete:	91.6%
Original Contract Time:	635 Days
Contract Time Extensions:	0 Days
Current Contract Time:	635 Days
Contract Time Expended:	587 Days
Contract Time Remaining:	48 Days
Percent Contract Time Expended:	92.4%

Schedule Milestones:

Selection of Design Consultant	16Aug05
IA authorizes Blueprint to execute Contract with Design Consultant	19Sep05
Contract and LOA#1 are executed	02Feb06
Submit Typical Section Package	06Mar06
Submit Pond Siting Report	05Jun06
Submit ROW Control Survey Maps	03Jul06
Submit Phase I Plans	24Oct06
Submit Pavement Design Package	02Nov06
Submit Phase II Plans	20Mar07
Submit Phase II ROW Maps	20Mar07
Revise and Finalize Phase II Plans	28Aug07
Submit Phase III (90%) ROW Maps	16Jul07
Submit Phase IV (100%) ROW Maps	27Aug07

E3 - CAPITAL CIRCLE SE – WOODVILLE HWY TO CRAWFORDVILLE RD

Design Subconsultant Participation:	Contract Amt	% of Design Contract	Expended To Date	Year To Date
EGS <i>Geotechnical</i>	\$ 67,411.46	7.14	\$ 59,209.30	\$ 59,209.30
ACI <i>Cultural Resource (Archaeological)</i>	\$ 7,745.52	0.82	\$ 7,745.52	\$ 7,745.52
Mehta <i>Survey</i>	\$ 91,944.24	9.74	\$ 91,944.24	\$ 91,944.24
DRMP <i>Survey and Mapping</i>	\$ 204,310.03	21.65	\$ 185,834.56	\$ 185,834.56
URS (Prime) <i>Design, Environmental, Signalization, Landscaping</i>	\$ 572,385.12	60.65	\$ 562,385.42	\$ 562,385.42
<hr/>				
Total Design Contract:	\$ 943,796.37	100.00%	\$ 907,119.04	\$ 907,119.04

Design MBE Goal:	\$ 146,288.44	15.50%
Design MBE to Date:	\$ 158,899.06	17.52%

Project Status:

Contract and Letter of Authorization was executed on February 2, 2006
 Part A - 60% design plans - total cost is \$935,594.21

Activities Since Last Period:

1. Submit Phase IV (100%) R/W Maps, legal descriptions and parcel sketches
2. Submit final 60% design plans
3. Processing SA #2

Planned Activities for Next Period:

1. Complete final invoicing and close-out project

E3 - CAPITAL CIRCLE SE – WOODVILLE HWY TO CRAWFORDVILLE RD

Significant Issues and Resolutions:

ISSUE

Flea Market Tract - Linear Pond Design

RESOLUTION

USFS Legislation (HR 5725) that would allow the USFS to sell the Flea Market Tract directly to a public or private entity was not acted upon by the 109th Congress. Blueprint was informed that this legislation must be "reintroduced" to the new 110th Congress and that this process was underway.

Blueprint met with USFS to discuss comments from their Biologist related to protecting the Striped Newt and Gopher Frog from the proposed stormwater ponds.

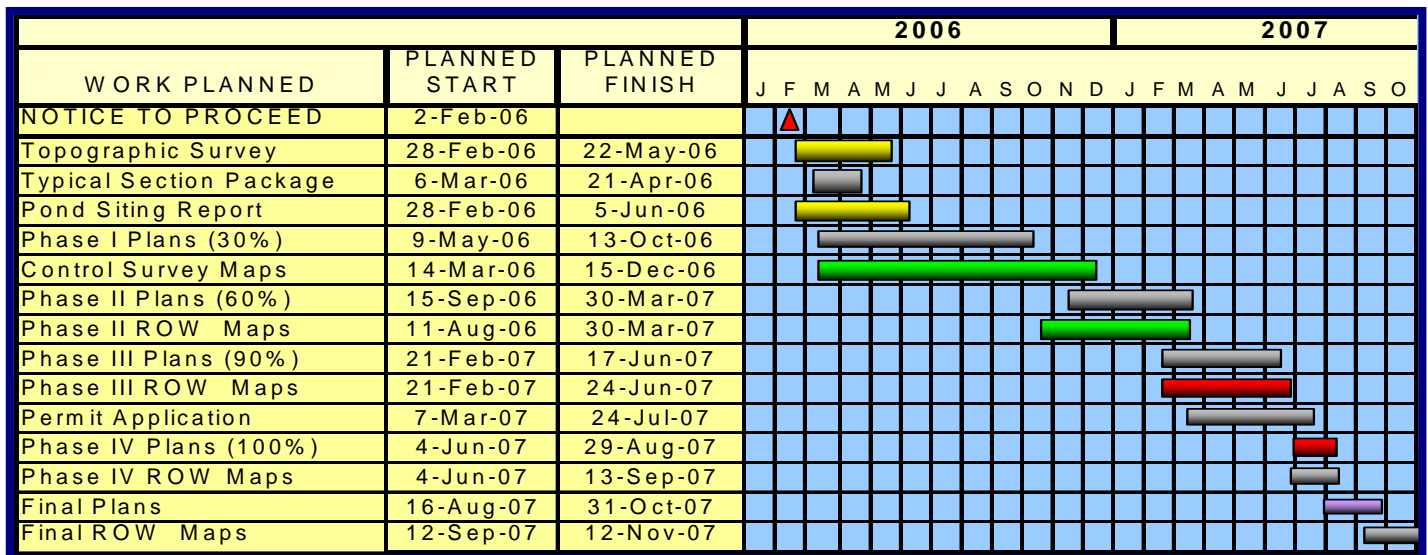
ISSUE

Roadway Improvement and Funding Options

RESOLUTION

Design Contract: Phase II (60%) Plans and Right-of-Way Maps will be completed the end of March 2007. Blueprint 2000 will stop the design at 60% and not authorize Part B of the Contract. This approach will allow Blueprint 2000 the ability to initiate right-of-way acquisition or move to a design-build contract, contingent upon available resources.

Schedule



E3 - CAPITAL CIRCLE SE – WOODVILLE HWY TO CRAWFORDVILLE RD

Right-Of-Way Status Report:

Right-of-Way maps are at 90% and are under review. We are in the position to begin acquiring Right-of-Way as funding becomes available.

FHWA Easement Deed to be completed by December 2007.

USFS Legislation (HR 5725) that would allow the USFS to sell the Tract of land directly to a public or private entity was not acted upon by the 109th Congress. Blueprint was informed that this legislation must be "reintroduced" to the new 110th Congress and that this process was underway.

E2 - CAPITAL CIRCLE SE – WOODVILLE HIGHWAY TO TRAM ROAD

Project Personnel:

Blueprint 2000:	Engineering Manager:	Jim Shepherd
	Project Manager:	Marek Romanowski
	Construction Manager:	Marcus Kelly
Sandco Inc./Genesis:	Project Manager:	Charles Fields
	Design PM:	Dave Snyder

Contract Cost & Schedule Status - Agreement No. 1464

Contract Commencement:

Contract Completion:

Percent of Work Performed: 0.0%

Original Contract Amount: \$ 17,616,609.90

Executed Supplemental Agreements: \$ 0.00

Pending Supplemental Agreements: \$ 0.00

Current Contract Amount: \$ 17,616,609.90

Invoiced to Date: \$ 0.00

Remaining Contract Amount: \$ 17,616,609.90

Percent of Contract Amount Complete: 0.0%

Original Contract Time: 0 Days

Contract Time Extensions: 0 Days

Current Contract Time: 0 Days

Contract Time Expended: 0 Days

Contract Time Remaining: 0 Days

Percent Contract Time Expended:

Project Description:

This project proposes to widen approximately 2.2 miles of the existing two-lane Capital Circle SE from Woodville Highway to Tram Road to an ultimate six-lane facility, mileposts 0.0 to 2.12. In addition, a transitional segment west of Woodville Highway (SR 263 MP 0.0 to approximately MP 0.2).

Schedule Milestones:

Execute Contract	15May07
Partnering Meeting	07Jun07

E2 - CAPITAL CIRCLE SE – WOODVILLE HIGHWAY TO TRAM ROAD

Project Status:

The Design-Build Contract was fully executed on 6/05/07. Utility kick-off meeting was held on 6/27/07. The Pre-construction Conference and the Public Meeting were held on 7/24/07. The initial environmental work has been done in preparation for permit submissions. The National Features Inventory (NFI) report has been approved by the COT Growth Management. The COT GM issued the Environmental Impact Assessment exemption (EIA short form B (low)) for Segment 1 and the Design-Build Team applied for Clearing Permit for Segment 1, including "sediment sumps" (i.e. future stormwater ponds). Joint Project Agreement (JPA) was entered into by St. Joe Company, City of Tallahassee and Blueprint 2000 on 7/31/07. Per terms of this JPA, easements for five drainage ponds and Right-of-Way donated to the project by St. Joe have been obtained from St. Joe. The Design-Build Team is in the process of preparation of the Environmental Management Permit application for submission to COT GM. The Stormwater Permit was received from the Department of Environmental Protection. Clearing and Grubbing permit has been received from COT on 8/21/07.

Activities Since Last Period:

1. Blueprint coordinated pre-construction activities with CEI and issued the Notice to Proceed to the DB Team on 8/28/07.
2. Blueprint and Design Team coordinated access issues with property owners at various locations.
3. Blueprint continued coordination with COT Electric Utility for relocation of the Transmission line structures in Segment 1.
4. Blueprint continued ROW acquisition process.
5. The DB Team and Blueprint conducted the ground breaking ceremony on 8/29/07.
6. The DB Team obtained a clearing permit from the COT and started clearing and grubbing on Segment 1.
7. Utility coordination continues and some utility work (removal of Talquin service power line) has already been done.
8. Blueprint coordinates utility relocation permit with COT.
9. The DB Team submitted 90% complete roadway plans to Blueprint for review on 9/14/07.

Planned Activities for Next Period:

1. Receive schedule from Sandco/Genesis and perform initial schedule review to establish project baseline.
2. Establish timetable for regular design reviews.
3. Negotiate Man-hours for CE&I firm and execute final Letter of Authorization for CE&I work.
4. Continue clearing and grubbing on Segment 1.
5. Apply to GM for the Fill Placement permit.
6. Continue Utility relocation coordination.
7. Continue design/QAQC activities on all 3 Segments.

E2 - CAPITAL CIRCLE SE – WOODVILLE HIGHWAY TO TRAM ROAD

Significant Issues and Resolutions:

ISSUE

The COT Engineering Department requested price proposals for a permanently installed irrigation system along the corridor of CCSE from Woodville Highway to Tram Road.

RESOLUTION

Blueprint 2000 requested, on the City's behalf, a price proposal from Sandco/Genesis. A price proposal has been received. Subsequently Blueprint 2000 has asked for a more detailed price proposal which has been provided by Sandco, and which is currently under review by COT Engineering Department. Blueprint will continue to monitor the Issue and will prepare a supplemental agreement for additional work for irrigation system once the agreement between Sandco and the City has been reached.

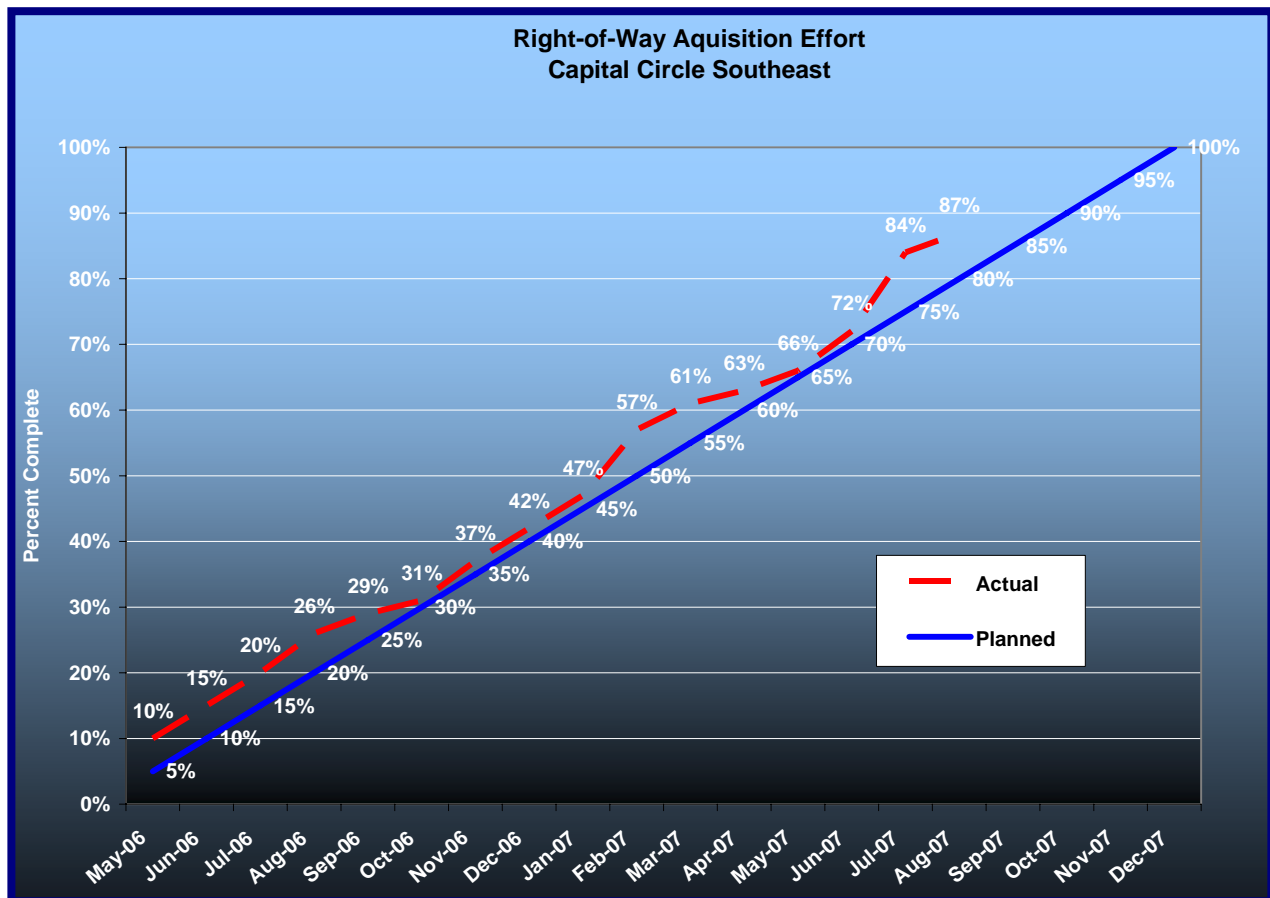
E2 - CAPITAL CIRCLE SE – WOODVILLE HIGHWAY TO TRAM ROAD

Right-Of-Way Status Report:

CLOSED - (IN POSSESSION)	9
AGREEMENTS SECURED BUT NOT CLOSED	0
DONATION	5
NEGOTIATING/PREPARING FOR SUIT	11
TOTAL PARCELS ON PROJECT	25

This project has 25 parcels.

We are in possession of 14 of the 25 parcels needed. Offers have been made on all remaining parcels needed for this project and negotiations are on going.



E1 - CAPITAL CIRCLE SE – TRAM ROAD TO CONNIE DRIVE

Project Description:

The proposed 3.44-mile project along Capital Circle Southeast (US 319/SR261) extends from south of Tram Road to Connie Drive (milepost 1.931 and 5.371) in Leon County and includes expanding the existing two-lane undivided rural roadway to a six-lane divided urban (curb and gutter) facility. The purpose of the roadway improvement project is to increase the capacity and safety of the existing highway. New traffic signals, including ITS features, will be provided at six intersections: Tram Road, Shumard Oak Boulevard, Merchants Row Boulevard, Blair Stone Road, Orange Avenue and Old St. Augustine Road. The project also includes significant landscaping as well as pedestrian, bicycle and recreational amenities.

Project Personnel:

Blueprint 2000:	Engineering Manager:	Steven Nichols
	Project Manager:	Marek Romanowski
	Construction Manager:	Marcus Kelley
PBS&J:	Project Manager:	Steve Martin

Contract Cost & Schedule Status - As of 9/6/2007

Contract Commencement:	10Jan05
Contract Completion:	02Oct07
Percent of Work Performed:	80.5%
Original Contract Amount:	\$ 30,796,339.34
Executed Supplemental Agreements:	\$ 5,818,213.15
Pending Supplemental Agreements:	\$ 181,156.30
Current Contract Amount:	\$ 36,614,552.49
Invoiced to Date:	\$ 29,465,025.75
Remaining Contract Amount:	\$ 7,149,526.74
Percent of Contract Amount Complete:	80.5%
Original Contract Time:	995 Days
Contract Time Extensions:	186 Days
Current Contract Time:	1181 Days
Contract Time Expended:	969 Days
Contract Time Remaining:	212 Days
Percent Contract Time Expended:	82.0%

E1 - CAPITAL CIRCLE SE – TRAM RD TO CONNIE DR

Schedule Milestones:

Intergovernmental Agency (IA) Approval	20Sep04
Execute Contract	22Dec04
Notice to Proceed	10Jan05
Right of Way Acquisition, Phase 1	01May05
Right of Way Acquisition, Phase 2	01Sep06
60% Design Submission - Segment I	28Feb05
90% Design Submission - Segment II	15Apr05
Final Design Submission - Segment II	25Jul05
90% Design Submission - Segment IV	30Aug05
90% Design Submission - Segment III	05Oct05
90% Design Submission - Segment I	14Feb06
Final Design Submission - Segment IV	24May06
Final Design Submission - Segment III	15Aug06
Final Design Submission - Segment I	17May06
Contract Completion	21Apr08

Design Subconsultant Participation:	Contract Amt	% of Design Contract	Expended To Date	Year To Date
Diversified Design & Drafting Services, Inc.				
<i>Design survey</i>	\$ 111,758.50	5.54	\$ 77,230.00	\$ 0.00
Allen Nobles & Associates, Inc.				
<i>Tree survey for permit application</i>	\$ 18,000.00	0.89	\$ 18,000.00	\$ 18,000.00
Environmental & Geotechnical Specialists, Inc.				
<i>Geotechnical design services</i>	\$ 163,985.26	8.13	\$ 163,985.26	\$ 2,677.26
CMTS Florida, LLC				
<i>Inspection services</i>	\$ 210,000.00	10.41	\$ 122,436.00	\$ 103,704.00
Registe Sliger Engineering, Inc.				
<i>Structural design</i>	\$ 9,898.58	0.49	\$ 8,017.85	\$ 6,137.12
PBS&J (Design Lead)				
<i>Design</i>	\$ 1,503,957.66	74.54	\$ 1,474,082.16	\$ 453,283.70
<hr/>				
Total Design Contract:	\$ 2,017,600.00	100.00%	\$ 1,863,751.27	\$ 583,802.08

Design MBE Goal:	\$ 312,728.00	15.50%
Design MBE to Date:	\$ 371,669.11	19.94%

E1 - CAPITAL CIRCLE SE – TRAM RD TO CONNIE DR

CONSTRUCTION:

Construction Subcontractor Participation:	Contract Amt	% of Const. Contract	Expended To Date	Year To Date
Ganes & Son Striping <i>Striping</i>	\$ 863,382.92	2.50	\$ 702,025.58	\$ 0.00
Construction Support Southeast <i>Construction Support</i>	\$ 1,694,000.00	4.90	\$ 1,244,062.07	\$ 0.00
All American Ford <i>Vehicles</i>	\$ 223,761.19	0.65	\$ 223,761.19	\$ 0.00
Ingram Signalization <i>Signal Installation</i>	\$ 2,371,960.00	6.86	\$ 901,549.74	\$ 0.00
Greeways of America <i>Landscaping</i>	\$ 1,400,000.00	4.05	\$ 972,460.57	\$ 0.00
Hale Contracting <i>Construction Support</i>	\$ 150,000.00	0.43	\$ 67,557.25	\$ 0.00
Florida Developer <i>Construction Support</i>	\$ 175,000.00	0.51	\$ 218,000.00	\$ 0.00
Terry's Trucking <i>Hauling</i>	\$ 1,339,859.08	3.87	\$ 1,339,859.08	\$ 0.00
M Inc. <i>Prime Contractor</i>	\$ 26,361,389.30	76.23	\$ 21,082,304.18	\$ 0.00
<hr/>				
Total Construction Contract:	\$ 34,579,352.49	100.00%	\$ 26,751,579.66	\$ 0.00

Construction MBE Goal:	\$ 7,261,664.02	21.00%
Construction MBE to Date:	\$ 5,669,275.48	21.19%

M. Inc. Contract

Total Construction Contract:
 \$29,132,815.28

Const. Invoiced to Date: \$21,646,841.88
 Const. MBE Invoice to Date: \$5,669,275.48

Construction MBE Goal:	\$ 6,117,891.21	21.00%
Construction MBE to Date:		26.19%

E1 - CAPITAL CIRCLE SE – TRAM RD TO CONNIE DR

Project Status:

Erosion Control, clearing and grubbing work and Utility relocation are complete on the project. COT permit was obtained for all Segments. The EMP conditional permit for Segment 2 was granted on October 31, 2005. Segment 2B EMP permit conditions have been satisfied and full permit for Segment 2 is in effect as of April 20, 2006. Curb and gutter and structural asphalt have been placed on CCSE between south of Tram Road and Blair Stone Road. Concrete curb and gutter, basecourse and structural asphalt are complete on northbound lanes between Blair Stone Road and Connie Drive. Traffic was switched over to northbound lanes of Segments 3 and 4 on 7/11/07. The EMP permit for Segment 3 was issued on September 8, 2006 conditional upon permitting of SouthWood drainage ponds WD 90N, WD 90S and WD290. SouthWood obtained the required permit on 11/30/06 and the Segment 3 final plans have been released for construction. Excavation of SouthWood ponds near Segment 3 began on March 5, 2007 and is in progress. Segment 3 southbound lanes grading, drainage installation, curb and gutter, limerock base course and structural asphalt are in progress. Permit for Segment 4 was obtained on June 8, 2006 and final plans were released for construction September 8, 2006. Work on Pond 11 in Segment 4 is complete. Segment 4 grading and drainage work is in progress on southbound lanes. Construction of Old St. Augustine Road is complete to the top of structural asphalt and the road has been opened to traffic.

Work on re-use water line installation is in progress. Placement of COT Water Utility potable waterline and storm drainage system is complete between Tram Road and Blair Stone Road. Curb and gutter and structural asphalt are complete on Tram Road on both sides of CCSE. No major erosion control, safety, or maintenance of traffic issues to date.

Landscaping work between Tram Road and Blair Stone Road is substantially completed, and landscaping work on the east side of CCSE continues to Connie Drive. The DRB Meeting was held on August 14, 2007.

E1 - CAPITAL CIRCLE SE – TRAM RD TO CONNIE DR

CCSE –Landscaping



E1 - CAPITAL CIRCLE SE – TRAM RD TO CONNIE DR

Activities Since Last Period:

1. Continued to coordinate MOT for road and utility construction at Monday Street temporary access to CCSE
2. Coordinated fiberglass lighting poles with the pole manufacturer and M.Inc. Obtained FDOT acceptance.
3. Coordinated design revisions and construction in Segment 4 (embankment in the ravine, driveways, gravity wall).
4. The Design-Build Team continued landscaping work on the east side of Segments 3 and 4.
5. Grading, base course and placement of concrete curbs were continued on the CCSE southbound lanes from Barcelona Lane to Hill Lane.
6. Excavation of SouthWood ponds near Segment 3 continued.
7. Grading, drainage installation and basecourse placement continued on Segment 4 south bound lanes.

Planned Activities for Next Period:

1. Conduct CEI progress meetings.
2. Start installation of street lighting poles.
3. Continue ROW and maintenance transfer to FDOT process.
4. Complete construction of Orange Avenue intersection with CCSE.
5. Continue grading, drainage installation, base course and curbs installation on the southbound lanes of Segments 3 and 4, north of Barcelona Lane.
6. Continue excavation of Segment 3 ponds.
7. Continue landscaping work on the west side of CCSE in Segments 3 and 4.
8. Continue construction of CCSE/Blair Stone Road intersection to top of structural asphalt.

Significant Issues and Resolutions:

ISSUE

1. Right-of-way and easement issues with COT Electric Utility (north of Monday Street).
2. Permitting - Segment 3.

RESOLUTION

Re. pt. 1: Blueprint is currently discussing the following options with COT and FDOT:

- a) To obtain a 30' roadway easement from COT Electric Utility that would allow FDOT future access and maintenance of CCSE embankment within COT Electric Utility ROW north of Monday Street.
- b) Instead of getting an easement, Blueprint would obtain the 30' strip of ROW from COT Electric in fee simple, and would provide the 30' utility easement to COT Electric on the same strip of ROW acquired from them.

Re. pt.2: Blueprint coordinated the EMP permit conditions for Segment 3 with SouthWood and COT. SouthWood volunteered to provide an interim drainage easement south of Tram Road to facilitate EMP permit processing independently of the approval of SouthWood SFMP by the City. An Agreement between CRCDD (SouthWood) and Blueprint has been reached to build the three ponds on SouthWood property, in the vicinity of the CCSE Segment 3, that would receive stormwater from CCSE. Based on this Agreement, the Supplemental Agreement (SA 13) between Blueprint and the Joint Venture was entered into for construction of the ponds. The SA 13 was executed on 2/12/07 and the construction of the ponds started in March 2007. The construction is currently in progress.

E1 - CAPITAL CIRCLE SE – TRAM RD TO CONNIE DR

CCSE – Tram Road Intersection Substantially Complete



E1 - CAPITAL CIRCLE SE – TRAM RD TO CONNIE DR

Right-Of-Way Status Report:

CLOSED - (IN POSSESSION)	46*
AGREEMENTS SECURED BUT NOT CLOSED	0
DONATION	14
NEGOTIATING/PREPARING FOR SUIT	0
TOTAL PARCELS ON PROJECT	60

* One parcel was acquired by Order of Taking and still is in suit.

C2 - CAPITAL CASCADE TRAIL –SEGMENT 2 DESIGN

Project Description:

Within the Capital Cascade Trail, Segment 2 is from Lafayette Street to South Monroe Street.

Project Personnel:

Blueprint 2000:	David Bright:	Planning Manager
	Gary Phillips:	Project Manager
Genesis:	Mark Llewellyn:	Project Manager

Contract Cost & Schedule Status - Agreement No. 533/Authorization LOA - As of 9/12/2007

Contract Commencement:	30May06
Contract Completion:	31Oct07
Percent of Work Performed:	58.0%
Original Contract Amount:	\$ 2,399,652.27
Executed Supplemental Agreements:	\$ 0.00
Pending Supplemental Agreements:	\$ 0.00
Current Contract Amount:	\$ 2,399,652.27
Invoiced to Date:	\$ 1,541,580.14
Remaining Contract Amount:	\$ 858,072.13
Percent of Contract Amount Complete:	64.2%
Original Contract Time:	519 Days
Contract Time Extensions:	124 Days
Current Contract Time:	643 Days
Contract Time Expended:	470 Days
Contract Time Remaining:	173 Days
Percent Contract Time Expended:	73.1%

Schedule Milestones:

Letter of Authorization	30May06
Submit Design Project Schedule	15Jun06
Workshop #1: Program Formation	27Jul06
Workshop #2: Design Selection	14Sep06
Plan Submittal - 50%	30Jun07
Plan Submittal - 90%	27Sep07
All deliverables completed	03Mar08

C2 - CAPITAL CASCADE TRAIL – SEGMENT 2 DESIGN

Design Subconsultant Participation:	Contract Amt	% of Design Contract	Expended To Date	Year To Date
Archaeological Consultants Inc. <i>Archaeological Services</i>	\$ 33,910.84	1.41	\$ 29,965.42	\$ 29,965.42
Environmental and Geotechnical Specialist <i>Geotechnical</i>	\$ 207,652.55	8.65	\$ 195,071.18	\$ 195,071.18
Akin Associates Architects <i>Architectural</i>	\$ 143,002.37	5.96	\$ 13,793.29	\$ 13,793.29
Moore Bass <i>Land Planning</i>	\$ 36,148.00	1.51	\$ 4,456.16	\$ 4,456.16
Uzzell Advertising <i>Public Relations</i>	\$ 15,562.61	0.65	\$ 14,062.61	\$ 14,062.61
Carr, Lynch, Sandell <i>Park Design</i>	\$ 135,550.00	5.65	\$ 127,164.83	\$ 127,164.83
Jennings Environmental <i>Environmental</i>	\$ 34,800.00	1.45	\$ 17,341.83	\$ 17,341.83
Pinnacle Engineering Group <i>MEP</i>	\$ 72,048.91	3.00	\$ 7,843.74	\$ 7,843.74
CDM <i>Stormwater</i>	\$ 141,230.00	5.88	\$ 94,485.92	\$ 94,485.92
Genesis Group <i>Prime</i>	\$ 1,580,054.00	65.84	\$ 1,037,395.16	\$ 1,037,395.16
<hr/>				
Total Design Contract:	\$ 2,399,959.28	100.00%	\$ 1,541,580.14	\$ 1,541,580.14

Design MBE Goal:	\$ 371,993.69	15.50%
Design MBE to Date:	\$ 257,348.66	16.69%

****Please Note: Carr, Lynch and Sandell's contract amount is not contained in the MBE calculation.**

C2 - CAPITAL CASCADE TRAIL – SEGMENT 2 DESIGN

Project Status:

Letter of Authorization #5 and #6 were executed on March 9 and May 30, 2006, respectively. The two LOAs have been combined under Segment 2 Design and Permitting task for a total cost of \$2,399,652.27

Activities Since Last Period:

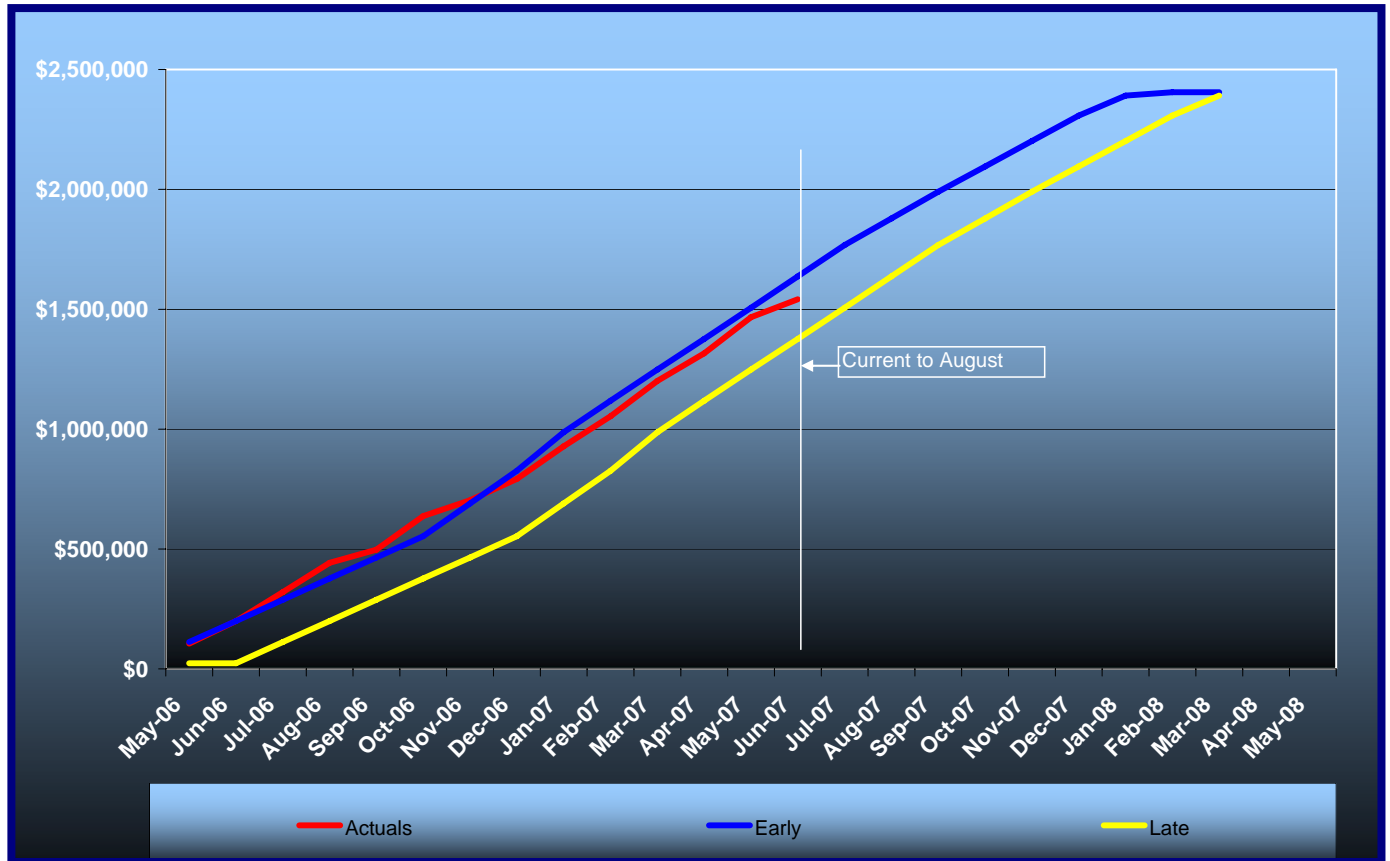
1. Continued to coordinate with UAOs on utility conflicts, relocations and potential enhancements via JPA
2. Submitted JPA to FDOT for review
3. Re-Calibrated XP-SWMM has been reviewed and accepted by Blueprint, COT and Leon County
4. Presentation to locate ITE Chapter schedule for August 28
5. Evaluate Peak Stage in lower pond and effects downstream in Segment 3
6. Evaluate potential hydraulic interim improvements in Segment 1
7. Provide hydraulic justification for removing culverts at Beverly and Call Streets
8. COT Electric Department scheduled to complete SUE work for electrical duct bank in early September 17
9. Met with Leon County to review roadway improvements
10. Met with COT Public Works to review roadway improvements
11. Finalized Cascade Waterfall Concept - no interactive component
12. Developed concept for Dog Park that provides treatment for dog waste
13. Submitted Technical Memorandums for By-Pass Box Culvert, Retaining Walls and Pedestrian Bridges
14. Evaluating design options for Suwannee Street Extension, i.e. minor collector design requirements
15. Submitted EIA for review

Planned Activities for Next Period:

1. Continue coordination with project partners
2. Submit 50% plans with results of hydraulic analysis in October
3. CDM has completed the post project model and has begun the floodway analysis
4. Coordinate improvements along South Monroe Street with FDOT programmed resurfacing project FPID 421635-1
5. Modifying Sequence of Construction Plans based on meeting with Leon County Public Works
6. Initiate design on several park amenities contingent upon IA funding approval on September 17
7. Submit design under bridge trestle to CSX for review including cast-in-place retaining walls and floor
8. Initiate Alum Study - tasks 4-24 upon funding approval of IA on September 17
9. Submit review comments on draft Technical Memorandums for Stormwater By-Pass Box Culvert, Retaining Walls and Pedestrian Bridges
10. Continue to refine dog park design to adequately address dog waste
11. Conduct Design Public Meeting with Commissioners October 25, 2007

C2 - CAPITAL CASCADE TRAIL – SEGMENT 2 DESIGN

Financial Summary of Planned vs. Actual Cost



MAHAN DRIVE/US 90 – DEMPSEY MAYO ROAD TO I-10 (TIER 2 BLUEPRINT PROJECT)

Project Description:

This project is the reconstruction of the existing two-lane rural roadway to a four-lane urban roadway with bike lanes and sidewalks. The design is being performed by a consultant under FDOT's direction.

Activities Since Last Period:

1. Geotechnical: All required Geotechnical Reports have been submitted
2. Utilities: Additional Vvh locations were provided on 8/14/07
3. Misc. Structure Plans: The design for the mast arm and retaining walls is complete
4. Drainage Design: Completed addressing 60% review comments
5. Environmental: FDEP permit was submitted on 8/27/07 removing references to Stewart Pond permit
6. Lighting Justification Report: The lighting plans to be prepared by COT
7. Signalization Plans: Finalizing work on signalization plans for Phase III (90%) submittal
8. Signed and Sealed design variation submitted on 8/28/07
9. Signing and Pavement Marking Plans: Finalizing work on signing and pavement marking plans for Phase III (90%) submittal

Planned Activities for Next Period:

1. Survey: Confirm benchmarks of the Stewart Pond to match benchmarks of the SR 10 design
2. Roadway Plans: The new 90% submittal date will be 10/12/07
3. Utilities: Utility companies relocation plans incorporated into the 90% plan set as well as Vvh information
4. Bridge Plans: Bridge limits including rip-rap to be confirmed with FDOT
5. Signalization /Pavement and Marking Plans: Incorporate review comments

ACRONYMN GLOSSARY

ACOE	Army Core of Engineers
CAC	Citizens Advisory Committee
CDM	Camp, Dresser & McKee Inc.
CEI	Construction Engineering & Inspection
CLS	Carr, Lynch & Sandell
COT	City of Tallahassee
CR	Community Representative
CRCDD	Capital Regional Community Development District
CRTPA	Capital Region Transportation Planning Agency
DB	Design-Build
DEP	Department of Environmental Protection
DMS	Department of Management Services
DRB	Dispute Resolution Board
EIA	Environmental Impact Assessment
EIS	Environmental Impact Study
EMP	Environmental Management Permit
ERP	Environmental Resource Permit
ETD	Estimated to Date
ETDM	Efficient Transportation Decision Making
FCT	Florida Communities Trust
FDEP	Florida Department of Environmental Protection
FDOT	Florida Department of Transportation
FHWA	Federal Highway Administration
FWC	Florida Fish & Wildlife Conservation Commission
GEC	General Engineering Consultant
GM	Growth Management
IA	Intergovernmental Agency
ITE	Institute of Transportation Engineers

ACRONYMN GLOSSARY

JPA	Joint Participation Agreement
LDCA	Location Design Concept Approval
LOA	Letter of Authorization
MBE	Minority Business Enterprise
MOT	Maintenance of Traffic
MSE	Mechanically Stabilized Earthwall
NFI	Natural Features Inventory
NTP	Notice to Proceed
NWFWM	Northwest Florida Water Management District
OT	Order of Taking
PD&E	Project Development and Environmental
ROW	Right-of-Way
SFMP	Stormwater Facility Management Plan
SHPO	State Historic Preservation Office
SOS	Scope of Services
SUE	Subsurface Utility Excavation
TCC	Technical Coordinating Committee
TIITF	Trustees of the Internal Improvement Trust Fund
UAO	Utility Agency Owner
USFS	United States Forestry Service
USFWS	US Fish and Wildlife Services
VE	Value Engineering
YTD	Year to Date