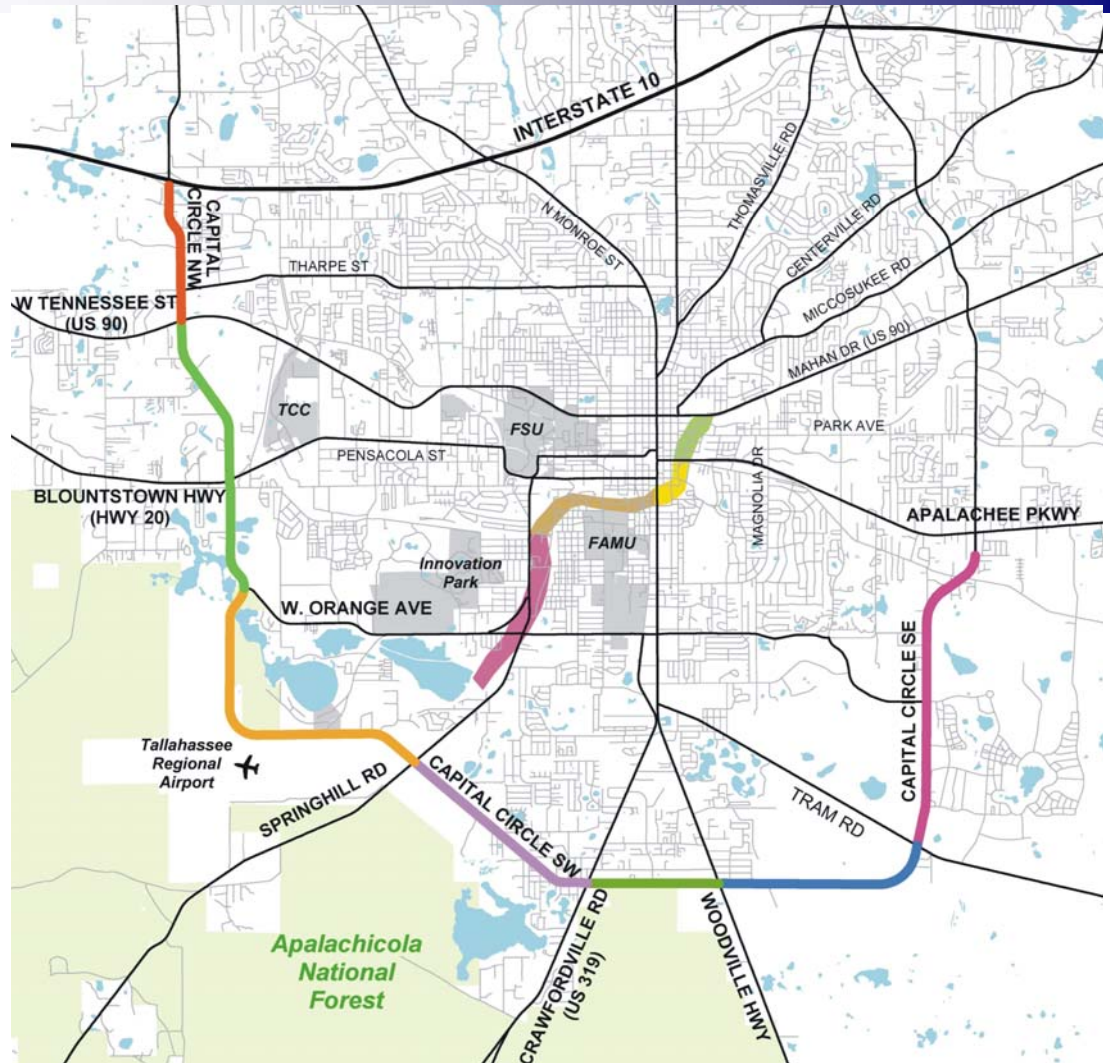


September, 2005



BLUEPRINT 2000 & BEYOND

1311 Executive Center Drive, Suite 109
Koger Center, Ellis Building
Tallahassee, Florida 32301

TABLE OF CONTENTS

I. Monthly Progress Reports

	<u>Page</u>
A. GEC Progress Report	1
B. Public Involvement	4
C. C0 - Capital Cascade Trail	5
D. E1 - Capital Circle Southeast (Tram to Connie)	11
E. E2 - Capital Circle Southeast (Woodville to Tram)	16
F. E3 - Capital Circle Southeast (Woodville to Crawfordville)	18
G. N1 - Capital Circle Northwest (US 90 to I-10)	20
H. N2 - Capital Circle Northwest/Southwest (US 90 to SR 20)	22
I. W1 - Capital Circle Southwest (Springhill to SR 20)	26
J. Other - Sensitive Lands Acquisition	28

GEC – GENERAL ENGINEERING CONSULTANT

Project Description:

General Engineering Consultant Contract for the Blueprint Intergovernmental Agency. THE LPA GROUP INCORPORATED is the Prime Consultant with Jacobs Civil, Incorporated as the major subconsultant. Twelve additional subconsultants, seven of which are MBE firms, make up the LPA/Jacob Blueprint GEC Management Team.

Key Personnel:

Program Manager: Jerry Oshesky - The LPA Group
 Engineering Manager: Bill Little - Jacobs

Contract Cost & Schedule Status – Contract 597

Original Contract Amount:	\$	2,341,236.00
Fiscal Year Re-Authorization:	\$	1,874,772.51
Executed Supplemental Agreements:	\$	0.00
Pending Supplemental Agreements:	\$	0.00
Current Contract Amount:	\$	4,216,008.51
Invoiced to Date (through 8/31/05):	\$	3,400,471.52
Remaining Contract Amount:	\$	815,536.99
Percent of Contract Amount Complete:		80.7%

Subconsultant Participation:	Contract Amt	% of GEC Contract	Earned To Date
Moore Bass Consulting <i>Stormwater & Landscaping</i>	\$ 75,667.00	1.79	\$ 36,820.93
Pope Environmental <i>Environmental Services</i>	\$ 115,342.00	2.74	\$ 81,632.50
OLH International <i>Program Controls</i>	\$ 557,461.00	13.22	\$ 596,989.53
Katherine Beck Consulting <i>Government Relations</i>	\$ 25,000.00	0.59	\$ 8,854.41
Quest Corporation of America <i>Public Involvement</i>	\$ 121,958.00	2.89	\$ 118,787.92
Uzzell Advertising <i>Public Relations, Web Maint.</i>	\$ 82,405.00	1.95	\$ 99,041.51
Welch & Ward Architects <i>Architecture, Recreation Facilities</i>	\$ 8,000.00	0.19	\$ 0.00
THC Right-of-Way Services, Inc. <i>Right-of-way appraisal and acquisition</i>	\$ 428,320.00	10.16	\$ 340,993.68
Berryman & Henigar <i>Survey and mapping</i>	\$ 79,055.00	1.88	\$ 53,047.77
Weigal - Veasey <i>Property Appraisal</i>	\$ 0.00	0.00	\$ 0.00
Williams Earth Sciences <i>Geotechnical Services</i>	\$ 38,023.66	0.90	\$ 11,296.44
Allen Nobles & Associates <i>Survey</i>	\$ 90,000.00	2.13	\$ 73,726.00

Total for all Subs:	\$	1,621,231.66	38.44%	\$	1,421,190.69
Total MBE Participation:	\$	985,833.00	23.37%	\$	942,126.80
MBE Participation to Date:			27.71%		

GEC – GENERAL ENGINEERING CONSULTANT

Activities Since Last Period:

1. Participated in Blueprint Audit with LPA Columbia Staff
2. Attended IA Meeting (9/19)
3. Attended TEAMFL Meeting in Bonita Springs (8/4-5)
4. Provided Orientation for New GEC Team Member, Gary Phillips
5. Attended CCSW Citizens Group Meeting (8/11)
6. Met with COT MBE Staff to discuss MBE Program Goals
7. Served as Technical Liaison for Oral Presentation Selection for E3
8. Participated in several CCSE Meetings with COT GM and PW
9. Participated in FHWA Presentation (8/25)
10. Participated in FDOT Midway Presentation (8/31)

Planned Activities for Next Period:

1. Coordination with SouthWood for SFMP Approval
2. Assist with coordination of E1-CCSE contract (T – C)
3. Continued Assistance with N1-CCNW Contract (letting)
4. Continued active coordination with FDOT
5. Implement Strategies for Blueprint Fund Leveraging
6. Coordinate with SouthWood for future funding opportunities (E2)

Significant Issues and Resolutions:

ISSUE

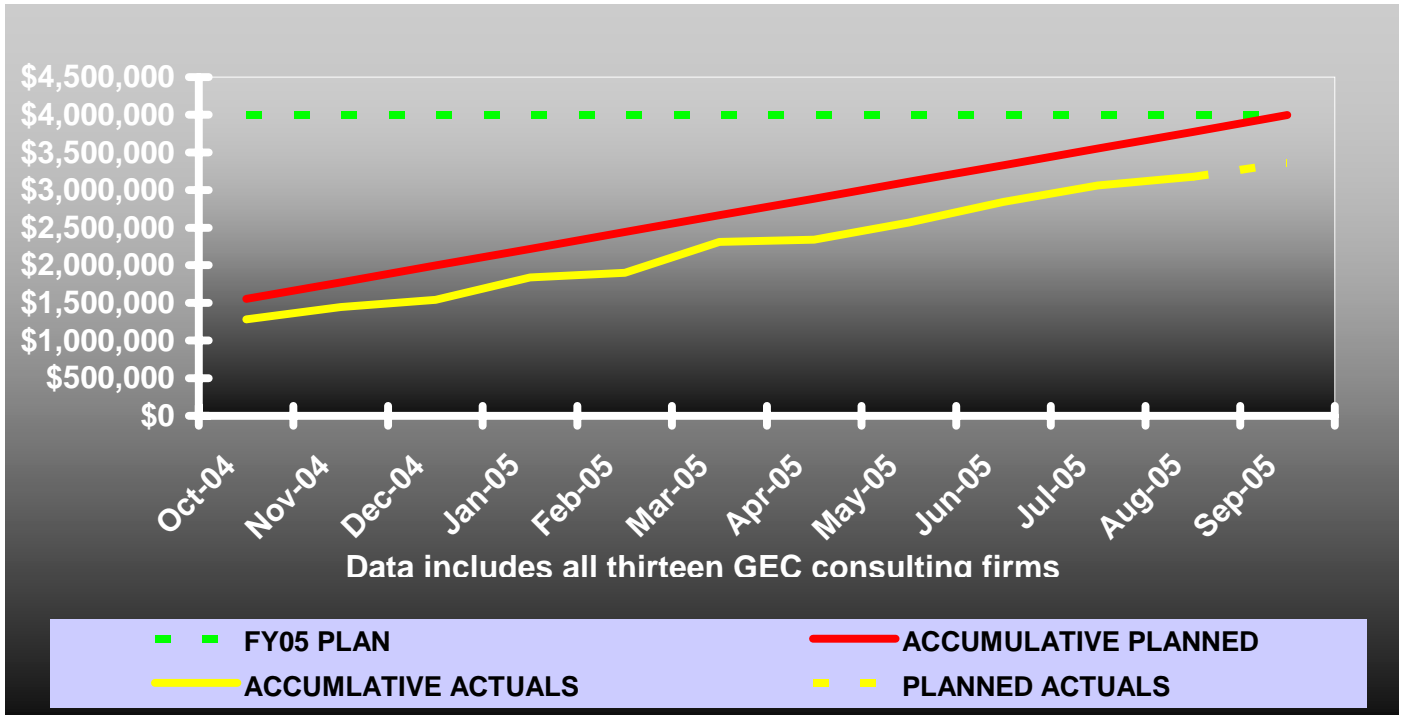
E1-CCSE Stormwater Facilities Master Plan

RESOLUTION

Continued monitoring with COT Growth and Environmental Office

GEC – GENERAL ENGINEERING CONSULTANT

GEC Contract Financial Summary of Planned Vs. Actual Costs – FISCAL YEAR 2005



GEC – PUBLIC INVOLVEMENT

Personnel:

Blueprint 2000:	Public Involvement Manager:	Bonnie Pfuntner, The LPA Group
	Public Information Officer:	Carlana Hoffman, QCA
	Public Information Officer:	Susan Emmanuel, QCA

Activities Since Last Period:

1. Attended Leon County web steward briefing
2. Conducted N2-CCNW/SW Project Advisory Group meeting (6/23)
3. Rolled out websites for E1-CCSE and N2-CCNW/SW (with downloads)
4. Conducted N2-CCNW/SW Alternatives Public Workshop (6/30) and related documentation
5. Attended Chamber of Commerce Annual Conf., booth and presentation set up (7/22-7/24)
6. Conducted W1-CCSW Public Meeting No. 4 (8/16) and related documentation
7. Assisted with W1-CCSW Section 18, Flea Market Tract "Roundtable discussion with Forestry and City/County stakeholders (6/28)
8. Developed E3-CCSE database
9. Presentation to FHWA for overview of all Blueprint programs/projects (8/25)
10. Presentation to FDOT Midway for overview of all Blueprint programs/projects (8/31)
11. Participated in development of WCOT "Tallahassee Matters" segment on W1-CCSW
12. Coordination with Leon County regarding use of variable message signs for public meetings
13. Coordination for E1-CCSE 2nd Partnering Meeting (now to be rescheduled)
14. Electronic compilation of PI activities on W1-CCSW for CD distribution to IA members
15. Graphics support for TCC/CAC/IA agenda item attachments and presentations
16. Conducted W1-CCSW Citizen Group Mtg. (8/11)
17. Development of Sensitive Lands video
18. Planning and coordination for E2-CCSE Design-Build and CEI Procurement strategy
19. Attended eight E1-CCSE CEI Meetings
20. Monthly Progress Reporting implementation in TEAMS
21. Responded to 20+ requests for information and 2 public record requests

Planned Activities for Next Period:

1. Public Involvement Scope development for CCT Phase 2 - Design
2. Coordination and Notification for N2-CCNW/SW public open house (9/29)
3. Coordination for N1-CCNW Ground Breaking/Press Conf (GB set for 10/28)
4. Survey notification flyer for CCNW/SW (9/21)

Significant Issues and Resolutions:

ISSUE

None at this time.

RESOLUTION

C0 - CAPITAL CASCADES TRAIL - Master Plan

Project Description:

This six mile long project area is commonly referred to as Capital Cascade Trail. It is Blueprint 2000 Map Area 3, a corridor along the St. Augustine Branch (SAB) from Tennessee Street to the SABs confluence with the Central Drainage Ditch (CDD) and then downstream along the CDD to its confluence with Munson Slough.

Project Personnel:

Blueprint 2000:	Planning Manager:	David Bright
	Project Manager:	Ed Ringe/Gary Phillips
Genesis:	Project Manager:	Mark Llewellyn

Contract Cost & Schedule Status - Agreement No. 533/Authorization 1 - As of 9/9/2005

Contract Commencement:	08Oct03
Contract Completion:	08Apr05
Percent of Work Performed:	90.0%
Original Contract Amount:	\$ 1,399,282.35
Executed Supplemental Agreements:	\$ 133,639.38
Pending Supplemental Agreements:	\$ 0.00
Current Contract Amount:	\$ 1,532,921.73
Invoiced to Date:	\$ 1,342,781.42
Remaining Contract Amount:	\$ 190,140.31
Percent of Contract Amount Complete:	87.6%
Original Contract Time:	548 Days
Contract Time Extensions:	183 Days
Current Contract Time:	731 Days
Contract Time Expended:	702 Days
Contract Time Remaining:	29 Days
Percent Contract Time Expended:	96.0%

Schedule Milestones:

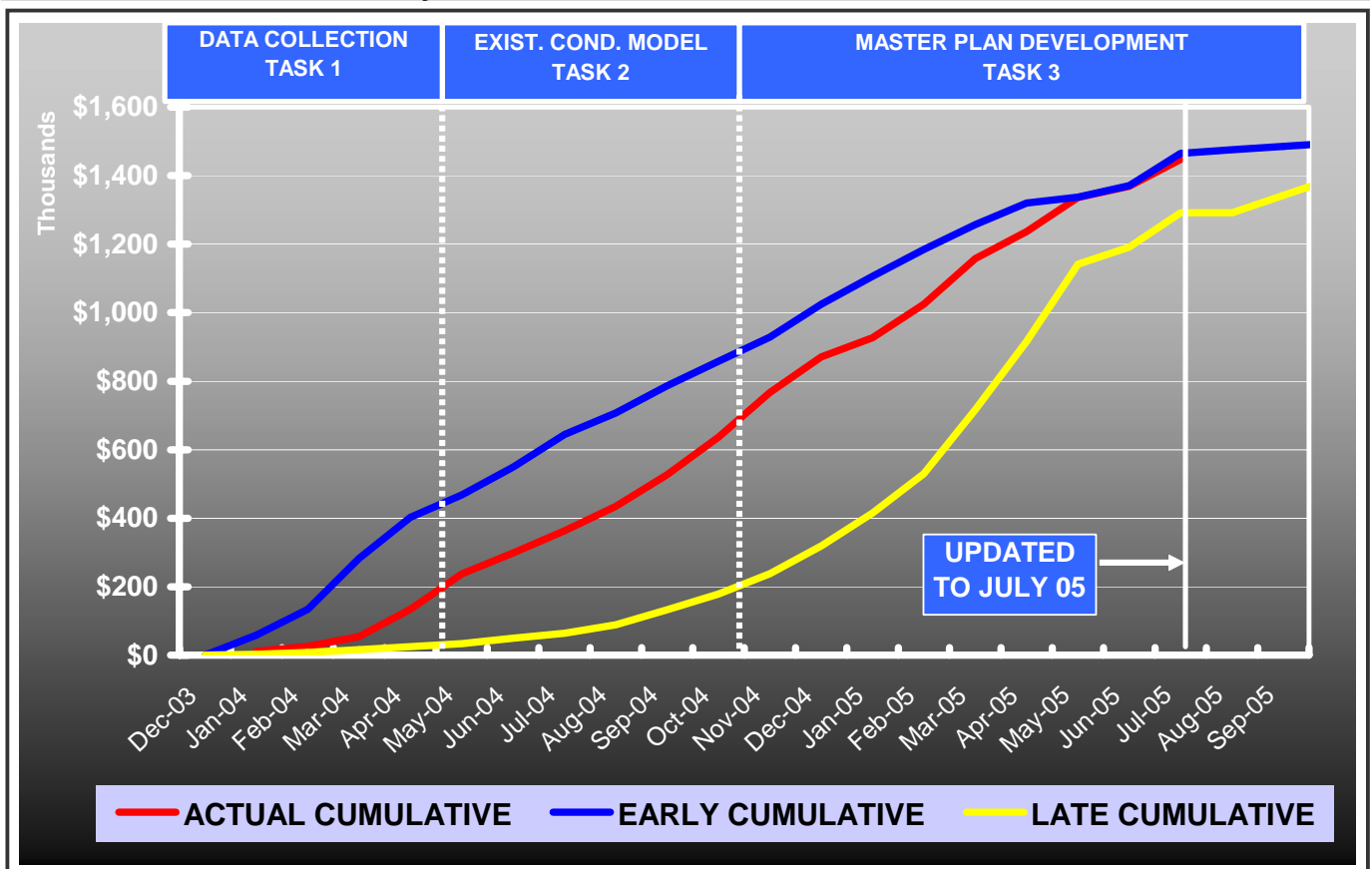
Finalize Stormwater Master Plan for TCC, CAC and IA action	19Sep05
Complete Final Project Report & Tech Appendix	30Sep05

C0 - CAPITAL CASCADES TRAIL - Master Plan

Design Subconsultant Participation:	Contract Amt	% of Design Contract	Earned To Date
EGS			
<i>Environmental</i>	\$ 84,885.47	5.54	\$ 78,150.89
Moore Bass			
<i>Landscape Architecture</i>	\$ 115,008.00	7.50	\$ 89,788.23
Archaeological Consultants Inc.			
<i>Historic and Archaeological</i>	\$ 27,162.95	1.77	\$ 25,433.52
CDM			
<i>Stormwater</i>	\$ 230,944.72	15.07	\$ 230,944.72
Biological Research Associates			
<i>Natural Features Inventory</i>	\$ 23,340.00	1.52	\$ 10,680.12
Greenways, Inc.			
<i>Park Programming</i>	\$ 19,455.00	1.27	\$ 14,054.81
Jennings Environmental			
<i>Stream Morphology</i>	\$ 9,700.00	0.63	\$ 9,635.60

Total for all Subs: \$ 510,496.14 33.30% \$ 458,687.89
 Total MBE Participation for contract: \$ 227,056.42 14.81% \$ 193,372.64
 MBE Participation to Date: 14.40%

Contract Financial Summary of Planned Vs. Actual Costs with Time Extension



C0 - CAPITAL CASCADES TRAIL - Master Plan

Project Status:

Project is in Phase 1, Master Plan Development. There are five tasks identified on the scope.

Task 1 - Data Collection	100% Complete
Task 2 - Existing Stream Hydraulics Analysis	99% Complete
Task 3 - Comprehensive Corridor Master Plan	94% Complete
Task 4 - Public Information Program	88% Complete
Task 5 - Documentation	94% Complete
Phase 2, Tasks to be scoped and assigned as determined. Not established.	

Activities Since Last Period:

1. Received City approval of Technical Report 2.
2. Received written comments from Blueprint 2000 regarding Technical Reports #2 & #3, and from the City on Technical Report #3 (no written comments were received from County Staff).
3. August 4, 2005 – Met with the City of Tallahassee Parks and Recreation Department to discuss the status of Segment 2 along with the costs for maintenance and operation of the park.
4. August 26, 2005 - Conducted a project overview and site inspection with FDEP, and ACOE to consider severing jurisdiction and to discuss TMDL issues.
5. Prepared a Draft Scope of Services for Phase 2 Design and Permitting.
6. Expanded the Phase 2 Planning and Design Team as requested.
7. September 7, 2005 – Obtained acceptance from the TCC to move forward with Phase 2.
8. September 8, 2005 – Obtained a positive recommendation from the CAC to move forward with Phase 2 as presented.
9. September 19, 2005 – IA meeting.

Planned Activities for Next Period:

1. Finalize Technical Report 2 and continue addressing comments received on Technical Reports #3
2. Finalize the Phase II Scope of Services:
 - a. Segment 2 Design Scope of Services.
 - b. Segment 3 and 4 Scope of Services for Historic Resources Analysis and Karst Features Analysis.
 - c. FEMA Floodway Map revisions
3. Continue Coordination on Segment 2
 - a. Maintain contact with the City on the contamination cleanup
4. Submit Wetland Inventory to DEP for review regarding Severance of Jurisdiction.
5. Schedule the final Public Information Meeting that will follow the September IA meeting.

C0 - CAPITAL CASCADES TRAIL - Master Plan

Significant Issues and Resolutions:

ISSUE

Leon High School - Segment 0

RESOLUTION

Blueprint met with Bill Montford regarding his preferred concept and associated cost.

ISSUE

Segment 2 Contamination Clean Up (focus on Cascade Park outfall channel)

RESOLUTION

Provide close coordination with the City and with URS via regularly scheduled meetings regarding the schedule and site reclamation. Special attention will be given to the following issues:

- * channel section between the R/R Bridge and South Monroe
- * risk assessment (required by EPA) based on future public use and park amenities
- * consistency of the proposed site excavation plan with future ponds
- * construction sequencing

The City is in final discussions with URS and expects an executed agreement shortly. EPA then has 21 days to review the Scope of Services before work can begin. The City's consultant, URS, has provided a schedule of 6 month from NTP to construction complete.

ISSUE

FEMA Flood Map Amendment for the Existing Conditions (Segments 1, 2 and 3).

RESOLUTION

Finalize the Scope of Work (Blueprint and City). Proceed with the application and submittal process as soon as possible.

ISSUE

CSX Railroad Coordination

RESOLUTION

Blueprint submitted a letter on 9/6/05 to CSX Intermodal (Leslie Scherr) to designate "The LPA Group" as their agent and initiate a request for a design Engineering Agreement. HDR is the CSX Intermodal agent and will be responsible for reviewing Blueprint designs.

ISSUE

Coordination with FDOT and DMS regarding Segment 2 parking improvements.

RESOLUTION

FDOT reviewed Blueprint's Memorandum dated July 18, 2005 and submitted comments back to Blueprint on August 4, 2005. Based on FDOT's review, Blueprint has revised the Memorandum and is coordinating the final version with FDOT and DMS.

ISSUE

Establish Operation and Maintenance Responsibilities for the project.

RESOLUTION

Met with City of Tallahassee Parks and Recreation Department on August 4, 2005 to discuss status of Segment 2 along with costs for maintenance and operation of the park.

C0 - CAPITAL CASCADES TRAIL - Master Plan

Significant Issues and Resolutions (*continued*):

ISSUE

City Growth Management review of the Existing Conditions Model and the Draft Natural Features Inventory.

RESOLUTION

Blueprint to make a follow up request regarding this issue.

ISSUE

Jurisdictional Severance

RESOLUTION

Held meeting with FDEP (Branch Office), COT and Leon County on August 18, 2005 to review CCT project and discuss permitting options. Conducted project field review on August 26, 2005 with ACOE representative, DEP (state and branch office), COT, and Leon County. Group discussed the potential for SAB jurisdictional severance and documented our next steps in meeting minutes. Next steps include completing an analysis of wetlands (quantity and quality) in the project corridor and basin and then setting up a meeting with FDEP to discuss the results.

ISSUE

Scope of Services (Phase 2)

RESOLUTION

Blueprint is preparing Scope of Services and associated costs for Phase 2 Segment 2 Design, Expansion of Master Plan Activities, and Myers Park SWMF. TCC subcommittee will assist Blueprint in developing final Scope of Services.

ISSUE

Adoption of TMDL criteria

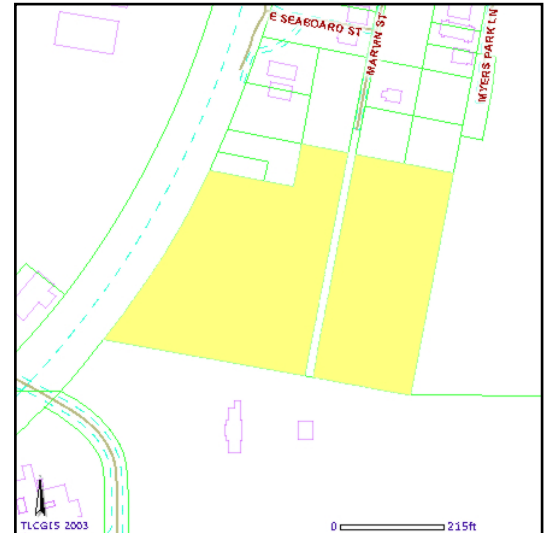
RESOLUTION

Blueprint will continue to monitor EPA actions and potential impact to CCT Master Plan and design options.

C0 - CAPITAL CASCADES TRAIL - Master Plan

Right-Of-Way Status Report:

1. There are several parcels near Myers Park that Blueprint and TPL are attempting to purchase for stormwater retention. At present Greg Chelius with TPL has had discussions with the property owner and they indicated their willingness to sell property. Blueprint has had the property appraised and are working through TPL and the property owner in an attempt to purchase this property in the near future.



2. Blueprint purchased a residential property at 218 FAMU Way within our land banking program for Capital Cascade Trail. Blueprint was able to secure this property at the appraised value. Blueprint met with SHPO on August 12 to confirm the property and structure were not eligible for the NRHP and could be demolished as soon as possible due to health and safety concerns, SHPO agreed with the CRA and a letter is forthcoming which will allow the demolition to proceed.



E1 - CAPITAL CIRCLE SE – Tram Road to Connie Drive

Project Description:

The proposed 3.44-mile project along Capital Circle Southeast (US 319/SR261) extends from south of Tram Road to Connie Drive (milepost 1.931 and 5.371) in Leon County and includes expanding the existing two-lane undivided rural roadway to a six-lane divided urban (curb and gutter) facility. The purpose of the roadway improvement project is to increase the capacity and safety of the existing highway. New traffic signals, including ITS features, will be provided at six intersections: Tram Road, Shumard Oak Boulevard, Merchants Row Drive, Blair Stone Road, Orange Avenue and Old St. Augustine Road. The project also includes significant landscaping as well as pedestrian, bicycle and recreational amenities.

Project Personnel:

Blueprint 2000:	Engineering Manager:	Bill Little
	Project Manager:	Marek Romanowski
	Construction Manager:	Garrett Martin
PBS&J:	Project Manager:	David Freni

Contract Cost & Schedule Status:

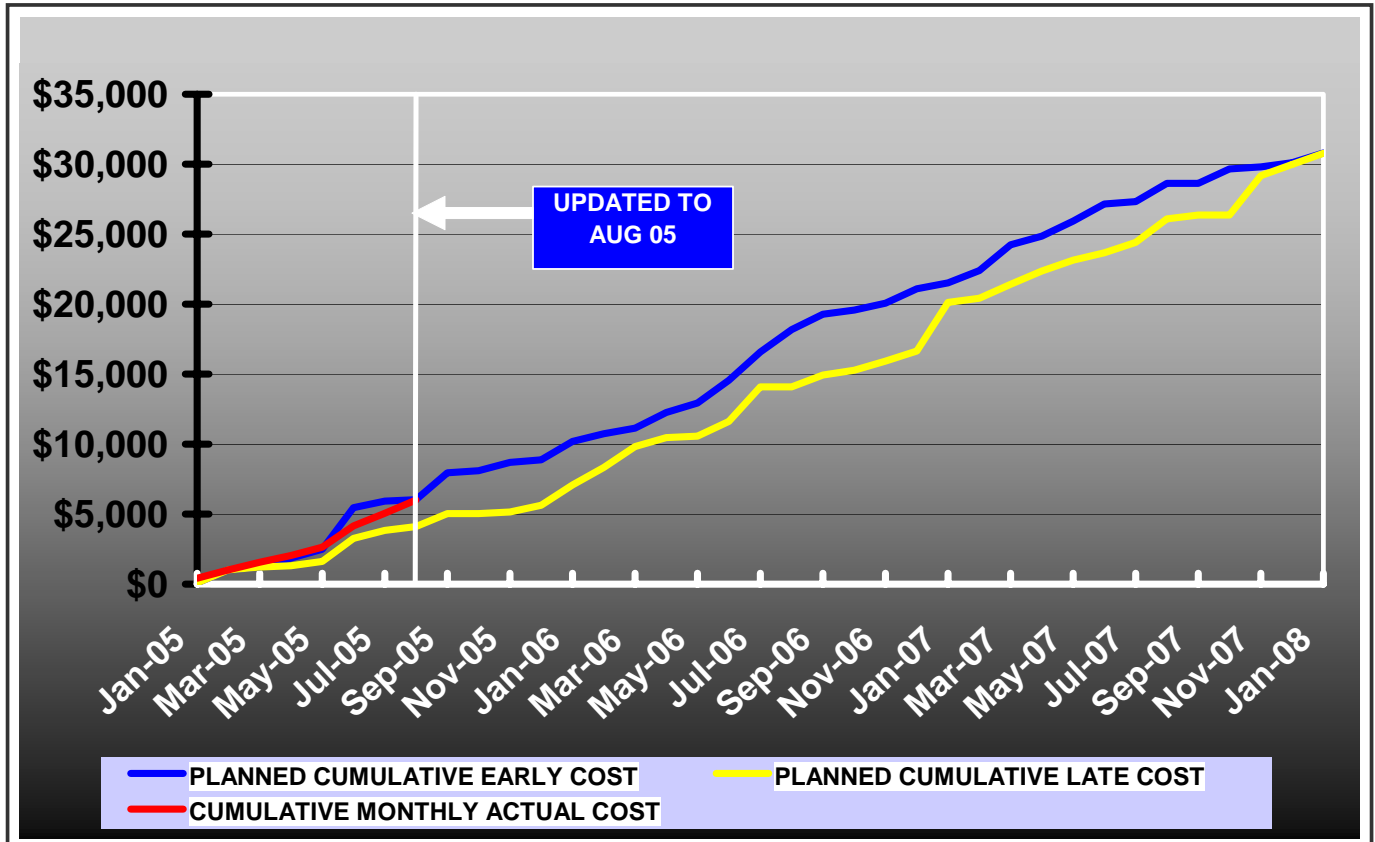
Contract Commencement:	10Jan05
Contract Completion:	10Jan08
Percent of Work Performed:	17.9%
Original Contract Amount:	\$ 30,796,339.34
Executed Supplemental Agreements:	\$ 5,259,275.25
Pending Supplemental Agreements:	\$ 10,780.00
Current Contract Amount:	\$ 36,055,614.59
Invoiced to Date:	\$ 6,446,291.08
Remaining Contract Amount:	\$ 29,609,323.51
Percent of Contract Amount Complete:	17.9%
Original Contract Time:	1095 Days
Contract Time Extensions:	11 Days
Current Contract Time:	1106 Days
Contract Time Expended:	0 Days
Contract Time Remaining:	1106 Days
Percent Contract Time Expended:	0.0%

Schedule Milestones:

Intergovernmental Agency (IA) Approval	20Sep04
Execute Contract	22Dec04
Notice to Proceed	10Jan05
Right of Way Acquisition, Phase 1	01May05
Right of Way Acquisition, Phase 2	01Sep06
60% Design Submission – Segment I	28Feb05
90% Design Submission – Segment II	15Apr05
90% Design Submission– Segment III	12May05
90% Design Submission– Segment IV	08Aug05
Final Design Submission – Segment II	09May05
Final Design Submission– Segment I, III	24Jun05
Final Design Submission– Segment IV	20Sep05
Contract Completion	10Jan08

E1 - CAPITAL CIRCLE SE – Tram Road to Connie Drive

DB Team Financial Summary of Planned Vs. Actual Costs



E1 – CAPITAL CIRCLE SOUTHEAST – Tram Rd. to Connie Dr.

Project Status:

Erosion Control and Clearing and Grubbing work is complete from Tram Road to Merchants Row Boulevard. COT Water/Sewer Utility Joint Project Agreement with Blueprint 2000 was executed on 6/08/05. Utility Relocation permit has been issued on 6/10/05 by COT Streets and Drainage Department. Design work on Segment 2 is 100% complete, on Segment 4 90%. Permit applications for these two Segments are being prepared. Design work on 90% complete plans for Segments 3 and 1 continues. Work on COT Water Utility 30" Sanitary Bypass (WP 1) is in progress.

Activities Since Last Period:

1. JPA with FDOT and Blueprint executed 5/12/05.
2. BP2K and COT Water and Sewer Utility finalized and signed the Joint Project Agreement and Supplemental Agreements 1 & 2 for additional Water Utility Work. Additional 100 calendar days project extension was also requested. The cost of the additional Utility Work will be borne by COT Water/Sewer Utility (no cost to BP2K).
3. Project duration has been extended by 100 calendar days to allow for the additional Water Utility work. The cost of the additional Utility Work will be borne by COT Water/Sewer Utility (no cost to BP2K).
4. BP2K has received FDOT's approval of the Typical Section and Pavement Design for CCSE.
5. The Utility Relocation permit for Segment 2 has been obtained from COT Street and Drainage Department.
6. The DB Team has submitted 60% complete plans for Segment 1. Blueprint to provide detail information for ROW acquisition.

Planned Activities for Next Period:

1. Conduct design progress meeting and CEI meeting.
2. DB Team intends to submit 100% construction and drainage plans for Seg. 2 on 6/22/05, for Blueprint 2000 review and approval. Final plans to follow (to obtain release for construction).
3. The DB Team will continue to work toward the 90% plans for Segments 1, 3 and 4.
4. Provide updated roadway plans and schedules to utility companies for Segment 1, 3 and 4.
5. Continue construction of 30" sanitary sewer bypass at Riggins Road and utility relocation in Segment 2.
6. Process three additional work change orders (median break at Midyette Road, chilled water lines at Shumard Oaks Blvd and two additional conflict structures at 30" sanitary force main bypass).

Construction Update:

1. Dispute Resolution Board Meeting held 8/30/05
2. Sodding Completed and temporary drainage controls in place
3. Partnering Meeting to be rescheduled in Nov.
4. MOT and Erosion Control only construction activities on-going
5. Construction activities have stopped awaiting G&E permit
6. Utility construction work on bypass line on-going

Significant Issues and Resolutions:

ISSUE

1. Right-of-way and easement issues with COT Electric Utility.
2. Canopy Road: intersection of CCSE / Old St. Augustine Road.
3. Permitting.

E1 – CAPITAL CIRCLE SOUTHEAST – Tram Rd. to Connie Dr.

Right-Of-Way Status Report:

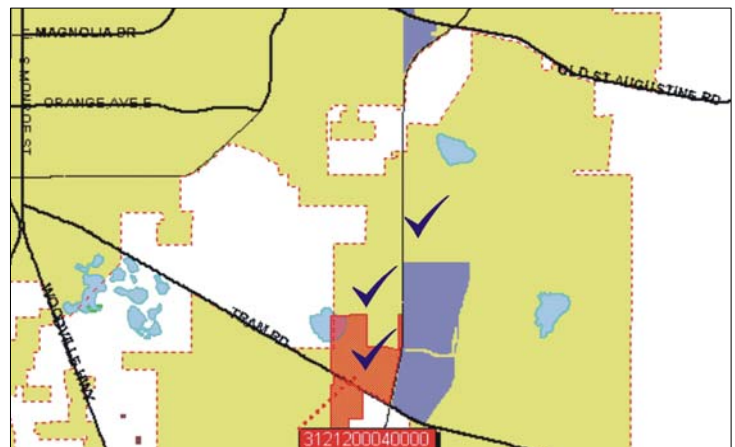
As of 9/15/05

NEGOTIATING	12
SECURED THROUGH OT	12
DONATION (ST. JOE, STATE LANDS & CITY)	14
SECURED THROUGH NEGOTIATED SETTLEMENT	22
TOTAL PARCELS ON PROJECT	60

1. There are 13 parcels at Tram Road and Capital Circle SE requiring right of way acquisition and/or relocation services. Blueprint has completed the appraisals and made offers. At the present time, we are negotiating with property owners for the purchase of the necessary right of way. In addition, the relocation process is also underway.



2. In addition to the right of way acquired by the City of Tallahassee, the SouthWood Property being donated within the JPA, and the parcels at Tram Road, there were also several tracts of land and right of way needed from the State of Florida. These state lands were secured in April. The SouthWood property was transferred to the City on May 16, 2005.



E2 - CAPITAL CIRCLE SE – Woodville Highway to Tram Road

Project Description:

Conversion 2 Lane Rural highway to 6-lane urban limited access facility

Project Personnel:

Blueprint 2000:	Engineering Manager:	Bill Little
	Project Manager:	Doug Martin
DRMP:	Project Manager:	John Burkett
	Assistant Project Manager:	Bryant King

Contract Cost & Schedule Status - Agreement No. 1098

Contract Commencement:	01Sep05
Contract Completion:	01Sep07
Percent of Work Performed:	0.0%
Original Contract Amount:	\$ 912,692.13
Executed Supplemental Agreements:	\$ 0.00
Pending Supplemental Agreements:	\$ 0.00
Current Contract Amount:	\$ 912,692.13
Invoiced to Date:	\$ 0.00
Remaining Contract Amount:	\$ 912,692.13
Percent of Contract Amount Complete:	0.0%
Original Contract Time:	730 Days
Contract Time Extensions:	0 Days
Current Contract Time:	730 Days
Contract Time Expended:	0 Days
Contract Time Remaining:	730 Days
Percent Contract Time Expended:	0.0%

Schedule Milestones:

Advertise for Design Consultant	(Completed)	06Feb05
Letter of Interest (LOI) Due	(Completed)	25Feb05
Shortlist Firms	(Completed)	11Mar05
Issue Request for Proposals	(Completed)	18Mar05
Preproposal Conference	(Completed)	24Mar05
Written Proposals Due	(Completed)	08Apr05
Finalize Review of Written Proposals	(Completed)	22Apr05
Oral Presentations	(Completed)	26Apr05
Selection of Design Consultant	(Completed)	26Apr05
IA Auth. BP Staff to Negotiate & Execute Contract w/ Design Consultant	(Completed)	16May05

E2 - CAPITAL CIRCLE SE – Woodville Highway to Tram Road

Design Subconsultant Participation:	Contract Amt	% of Design Contract	Earned To Date
PBS&J	\$ 17,679.39	1.94	\$ 0.00
EGS			
Geotechnical	\$ 101,211.21	11.09	\$ 0.00
Poole			
Surveying	\$ 75,645.96	8.29	\$ 0.00
Total for all Design Subs: \$ 194,536.56 21.32% \$ 0.00			
Total MBE Participation for contract: \$ 176,857.17 19.38% \$ 0.00			
MBE Participation to Date: 0%			

NOTE: Just started contract, no invoices submitted yet

Project Status:

- JPA for COT Water/Sewer approved and circulating for signatures.
- DRMP finished their fee proposal and staff-hour estimate. Negotiation Process Complete
- Contract, Scope, LOA#1 completed
- Contract has been signed and NTP has been issued.
- DRMP's Surveyors started work on the project September 1.
- Waiting on City Attorney's sign-off on the contract document for approval to form.
- DRMP prepared alternative alignments for review in anticipation of right of way issues
- DRMP and BP2K met with SouthWood to discuss pond siting options.

Activities Since Last Period:

1. JPA final in circulation for signature
2. Negotiated staff-hour estimates
3. Evaluated fee proposal and proposed contract amount
4. Executed contract and issued NTP

Planned Activities for Next Period:

1. Receive and evaluate project schedule
2. Evaluate utility work progress
3. Evaluate right of way maps
4. Issue Letter of Authorization for City Utility work

Significant Issues and Resolutions:

ISSUE

Waiting on contract approval from City Attorney's Office

RESOLUTION

All signatures are on the document except this one.

ISSUE

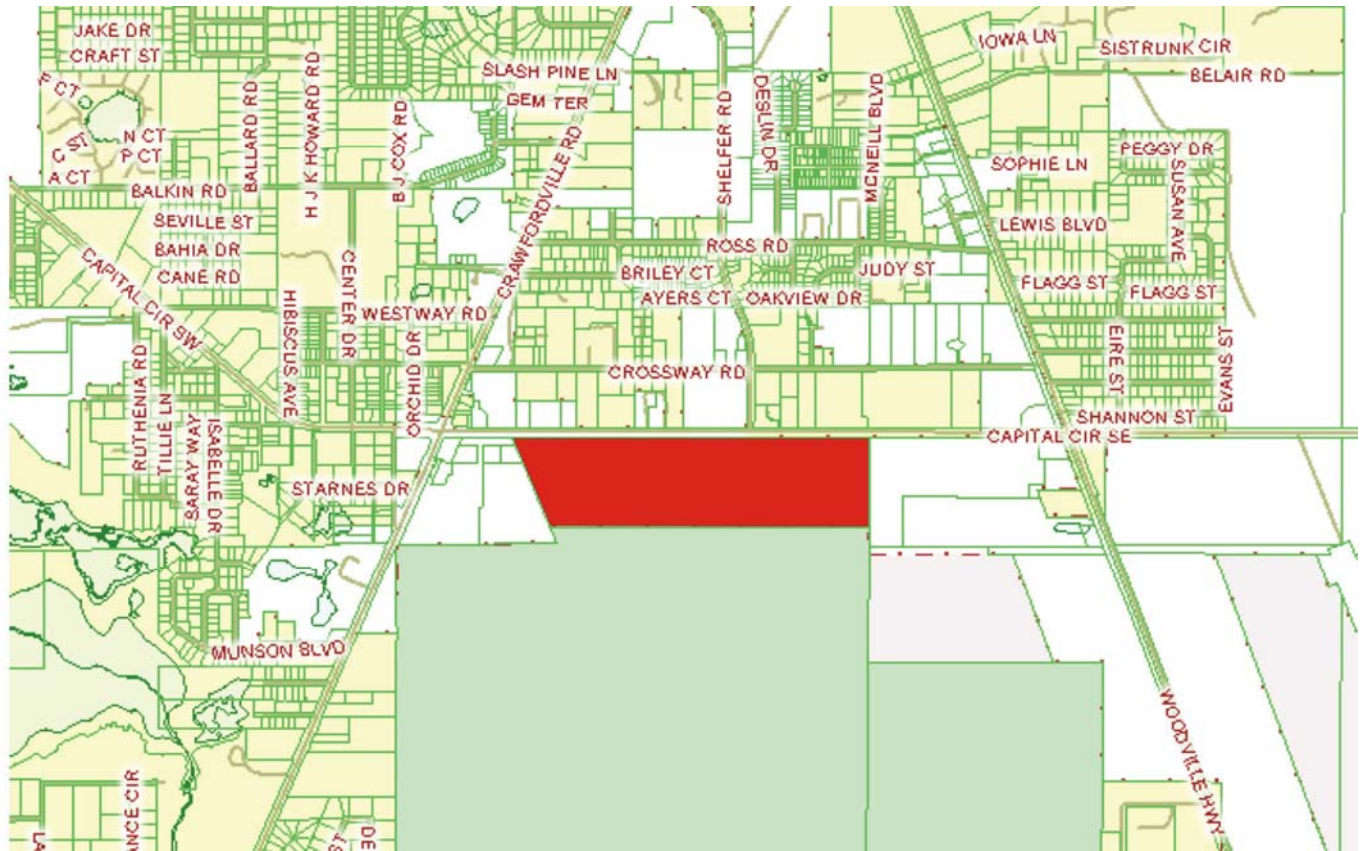
The critical design time required dictates that the design concept regarding the stormwater control via linear ponds or offsite ponds must be determined ASAP.

RESOLUTION

Meeting help with SouthWood 9/12/2005

E3 - CAPITAL CIRCLE SE – Woodville Hwy. to Crawfordville Rd.

Right-Of-Way Status Report:



The Flea Market Tract owned by the United States Forest Service- Blueprint is currently working with the USFS to secure this 100 Acre parcel on Capital Circle between Woodville and Crawfordville Hwy. At this time, Blueprint is having discussions with the Forrest Service to facilitate a possible land swap with this property and other properties that the USFS desires. Blueprint is having appraisals completed to determine the value of this tract and those that the USFS desires to swap. We are in the early stages of discussions and much work is still ahead for both Blueprint and the USFS.

N1 - CAPITAL CIRCLE NW – I-10 to US 90

Project Description:

The proposed 1.991-mile roadway project (FPID: 219722-1) consists of upgrading the existing undivided rural facility to a six-lane divided urban (curb and gutter) facility. Upgrades to the West Tennessee, Tharpe, Hartsfield and Commonwealth intersections will also be included. The purpose of the roadway improvement project is to increase the capacity and safety of the existing highway. The roadway project will be designed, let and constructed by the Florida Department of Transportation, with advance funding provided by the Blueprint 2000 Intergovernmental Agency.

Project Personnel:

Blueprint 2000:	Project Manager:	Garrett Martin
FDOT Design:	Project Manager:	Brian Little, P.E.

Contract Cost & Schedule Status:

Schedule Milestones:

Complete 100% Plans	22Dec04
ROW, Permits and Utilities Clear	06Dec04
Plans to Tallahassee (final processing)	15Mar05
Select CEI Consultant	14Mar05
Letting Date	25Jun05
Begin Construction	15Oct05

Project Status:

Construction to Begin 10/05

Activities Since Last Period:

1. Attended Preconstruction Meeting at FDOT Midway Office 9/15/05
2. Coordination for Press Conference and Ground Breaking
3. Briefing for FDOT Midway Office 8/24/05, well received.

Planned Activities for Next Period:

1. Press Conference/Ground Breaking 10/28/05
2. Attendance by Blueprint staff at Progress and CEI Meetings
3. Coordination regarding documentation requirements for NFWFMD Grant on Regional Pond 1
4. Anticipate construction to begin late September

Significant Issues and Resolutions:

ISSUE

None at this time

RESOLUTION

N1 - CAPITAL CIRCLE NW – I-10 to US 90

Right-Of-Way Status Report:

As of 9/15/05

CLOSED - (IN POSSESSION)	30
AGREEMENTS SECURED BUT NOT CLOSED	0
DONATION	4
ACQUIRED THROUGH CONDEMNATION	91
TOTAL PARCELS ON PROJECT	125

FDOT is currently updating the R/W Cost Estimate. It currently indicates the estimate to be \$45,000,000

N2 - CAPITAL CIRCLE NW/SW – US 90 to SR 20

Project Description:

The Expanded Project Development and Environment (PD&E) Study limits for this 2.9 mile project extend from Tennessee Street (US 90/SR 10) to Orange Avenue (SR 371). This project also includes the preparation of approximately 60% design plans, etc. from Tennessee Street to Orange Avenue.

Project Personnel:

Blueprint 2000:	Project Manager:	Jim Shepherd
H.W. Lochner:	Project Manager:	Hugh Williams

Contract Cost & Schedule Status - Agreement No. 772/Authorization 1 - As of 9/20/2005

Contract Commencement:	10May04
Contract Completion:	10May07
Percent of Work Performed:	42.5%
Original Contract Amount:	\$ 1,921,585.90
Executed Supplemental Agreements:	\$ 159,836.80
Pending Supplemental Agreements:	\$ 0.00
Current Contract Amount:	\$ 2,081,422.70
Invoiced to Date:	\$ 883,918.00
Remaining Contract Amount:	\$ 1,197,504.70
Percent of Contract Amount Complete:	42.5%
Original Contract Time:	1095 Days
Contract Time Extensions:	0 Days
Current Contract Time:	1095 Days
Contract Time Expended:	498 Days
Contract Time Remaining:	597 Days
Percent Contract Time Expended:	45.5%

Schedule Milestones:

Kickoff Meeting	13Jul04
Draft Traffic Tech	01Nov04
Phase 1 Geotech	01Dec04
Final Traffic Tech	13Dec04
Water Quality Eval.	03Jan05
Draft Air Quality	24Jan05
Draft Loc. Hydraulics	21Feb05
Draft ESBA	21Feb05
Draft Contamination	21Feb05
Draft Noise Study	07Mar05
C. Stage Relocation	24Jan05
Roadway Concepts	07Feb05
Draft PER	07Feb05
Cultural Assessment	07Feb05
Draft Pond Siting	09Feb05
Draft Wetlands Eval.	21Feb05
ROW Control Map	01Feb05

N2 - CAPITAL CIRCLE NW/SW – US 90 to SR 20

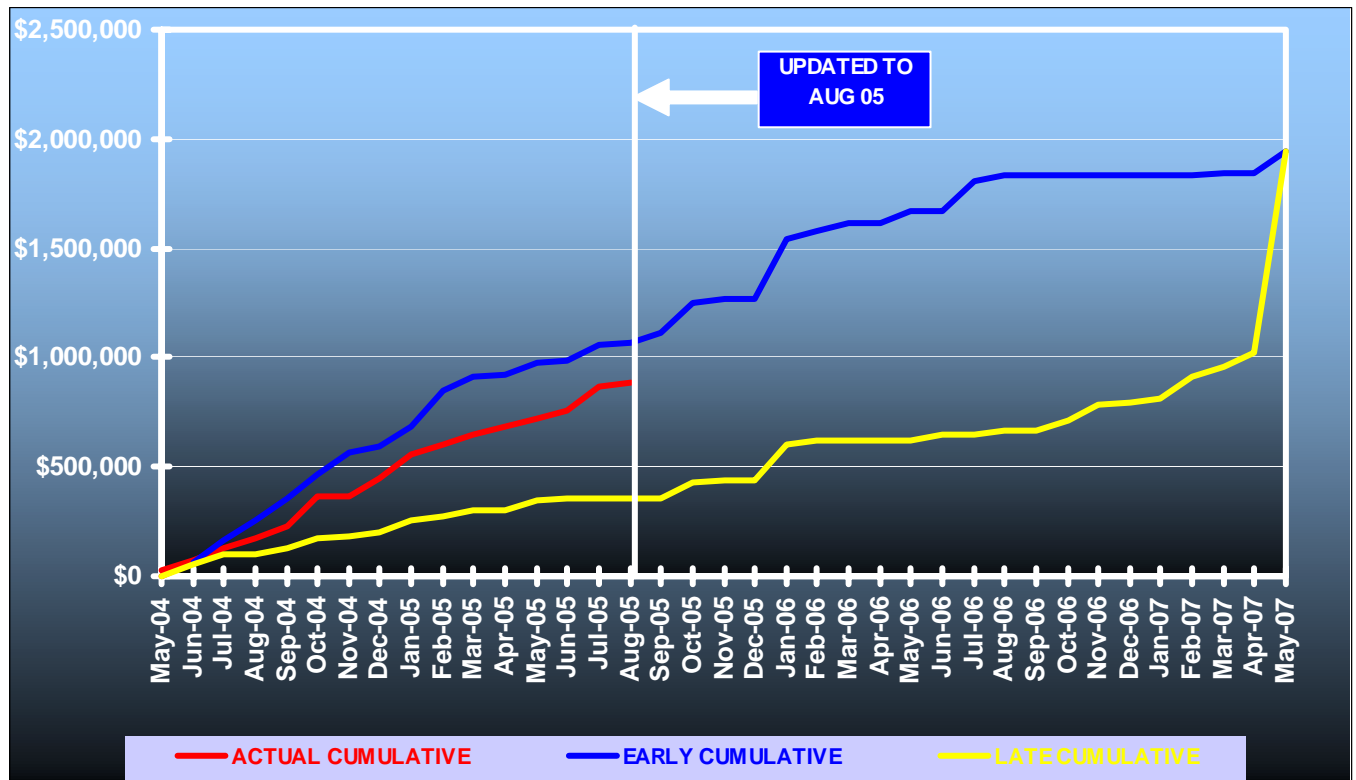
Schedule Milestones (continued):

Alt. Public Meeting	24May05
Natural Features	21Jul05
Final Pond Siting	09Sep05
Phase 2 Geotech	09Sep05
Public Hearing	16Sep05
Draft Cat Ex	10Oct05
Final Air Quality	10Oct05
Final Loc. Hydraulics	17Oct05
Final ESBA	17Oct05
Final Contamination	17Oct05
Final Wetlands Eval.	17Oct05
30% Roadway Plans	21Oct05
Draft Coordination Rpt.	24Oct05
Final Noise Study	14Nov05
Final Coordination Rpt.	21Nov05
Final PER to FHWA	22Nov05
Final Cat Ex	25Jan06
60% Roadway Plans	06Feb06
Bridge Dev. Report	10Feb06
Env. Impact Analysis	13Feb06
90% ROW Maps	13Feb06
Final ROW Maps	11Apr06

Design Subconsultant Participation:	Contract Amt	% of Design Contract	Earned To Date
Environmental Geotechnical Specialists			
<i>Geotechnical</i>	\$ 126,831.57	6.09	\$ 56,931.18
Diversified Design & Drafting Services, Inc.			
<i>Survey and R/W Mapping</i>	\$ 443,781.44	21.32	\$ 171,324.60
Archaeological Consultants, Inc.			
<i>Cultural Resource Assessment</i>	\$ 10,947.15	0.53	\$ 10,399.79
HNTB/TEI			
<i>Traffic Analysis</i>	\$ 80,310.59	3.86	\$ 78,302.83
American Acquisition Group			
<i>Right of Way</i>	\$ 95,201.78	4.57	\$ 57,200.89
Total for all Design Subs:	\$ 757,072.53	36.37%	\$ \$374,159.29
Total MBE Participation for contract:	\$ 581,560.16	27.9%	\$ 238,655.57
MBE Participation to Date:	\$	27.0%	

N2 - CAPITAL CIRCLE NW/SW – US 90 to SR 20

Contract Financial Summary of Planned Vs. Actual Costs



Project Status:

- Fine-tuning alternative concepts
- Updating environmental and engineering analyses
- Updating environmental and engineering reports
- Submitted the recommended alignment
- Preparing to begin the preliminary design

N2 - CAPITAL CIRCLE NW/SW – US 90 to SR 20

Activities Since Last Period:

1. Submitted pond siting and mitigation report.
2. Continued the structural analysis for bridges at CSX RR and Gum Swamp.
3. Submitted the Conceptual Stage Relocation Plan
4. Prepared and submitted SA #3, for extension of preliminary design services from SR 20 to Orange Avenue.
5. Submitted the Final Cultural Resource Assessment Report
6. Met with key property owners adjacent to proposed frontage roads to receive their input on the design concepts.
7. Re-submitted the Control Survey Map, with expanded limits.
8. Submitted all reports and concept plans in pdf format for posting on the Blueprint web-site.
9. Met with USFS and Tallahassee Museum staff regarding support to not classify east side of Capital Circle as 4(f).
10. Submitted drafts of 4(f) Determination of Applicability for Gum Swamp and Apalachicola National Forest properties.
11. Submitted Recommendation for Preferred Alternative.
12. Continued negotiations for SA #3.
13. Continue updating Environmental Reports based on review comments.
14. Met with School Board representative and with adjacent property owner representative to coordinate access.

Planned Activities for Next Period:

1. Update the Air and Noise Reports based on review comments.
2. Review and comment, or concur with preferred alternative recommendation, in order to allow preliminary design and survey activities to proceed.
3. Complete negotiations and provide NTP for SA #3.
4. Submit separate 4(f) Determinations for Gum Swamp and National Forest property.
5. Receive all Environmental and Engineering Review comments, and, together with the approved preferred alternative, update and provide final reports.
6. Facilitate meeting on September 28 to discuss School Board property access.
7. Hold Open House on September 29 to show revised SR 20 concepts and proposed pond locations.

Significant Issues and Resolutions:

ISSUE

Transition south of Orange Avenue.

ISSUE

SR 20 alignment.

ISSUE

SR 20 typical section.

ISSUE

Bridging of Gum Swamp.

ISSUE

Pond and mitigation alternatives.

ISSUE

Leon County School Board Maintenance Facility access.

W1 - CAPITAL CIRCLE SW – Springhill Road to SR 20

Project Description:

Capital Circle (SR 263) between Springhill Road (CR 2203) and Blountstown Highway (SR 20) a distance of approximately 4.5 miles.

Using the Blueprint 2000 & Beyond “Project Definitions Report”, prepared by the Economic and Environmental Consensus Committee in 1999; the Lake Bradford Sector Plan, conducted by the Tallahassee/Leon County Planning Department; and based upon public input, Blueprint 2000 staff has identified and evaluated 17 alternative alignments, which are located in three corridors. Corridor 1 includes upgrading Capital Circle along the existing alignment; Corridor 2 includes constructing the proposed improvements to the south and west of the Tallahassee Regional Airport; Corridor 3 includes constructing the proposed improvements using portions of Orange Avenue, Tyson Road, Springhill Road, or a new alignment, etc.

Project Personnel:

Blueprint 2000:	Planning Manager:	Dave Bright
	Project Manager:	Jim Shepherd, P.E.

Contract Cost & Schedule Status:

The current activities are being performed by Blueprint 2000 staff in order to narrow the number of proposed corridors for Capital Circle. The most viable corridors will be studied further in an upcoming PD&E Study. Blueprint 2000 staff will provide recommendations to the IA at their Sept. 19, 2005 meeting.

Schedule Milestones:

First Citizens Group Meeting	18Jan05
First Public Meeting	25Jan05
Second Citizens Group Meeting	24Feb05
Second Public Meeting	01Mar05
Third Citizens Group Meeting	29Mar05
Third Public Meeting	05Apr05
Fourth Citizens Group Meeting	11Aug05
Fourth Public Meeting	16Aug05
TCC Approves Scope for PD&E Study	14Nov05
IA Authorizes Blueprint Staff to Advertise for PD&E Consultant	19Sep05
IA Approves Alignments that are to be included in PD&E Study	19Sep05

W1 - CAPITAL CIRCLE SW – Springhill Road to SR 20

Project Status:

Blueprint 2000 staff has compiled the preliminary data and public comments gathered to-date for the project.

Blueprint 2000 staff will request direction from the IA on September 19, 2005 regarding the Corridor(s) to be studied during the PD&E Study.

Activities Since Last Period:

1. Presented at Tallahassee Chamber of Commerce Retreat on July 22-24.
2. Met with Rob Shiffer/Cambridge Systematics on August 4.
3. Held fourth CCSW Citizens Group Meeting on August 11.
4. Held fourth CCSW Public Meeting on August 16.
5. Attended Airport Gateway Advisory Committee Meeting on August 26.
6. Attended Innovation Park Meeting on September 13.
7. Attended Leon County Commission Meeting on September 13. The Airport Gateway Advisory Committee presented their recommendations.
8. Evaluated additional alternatives proposed by Airport Gateway Committee and Lake Bradford Homeowners Association.
9. Compiled all of the documentation received for the project.
10. Continued preparation for the Sept. 19 IA meeting.

Planned Activities for Next Period:

1. Continue preliminary activities related to the advertisement for a PD&E Consultant.
2. Load alternative alignments into ETDM.

Significant Issues and Resolutions:

ISSUE

None at this time.

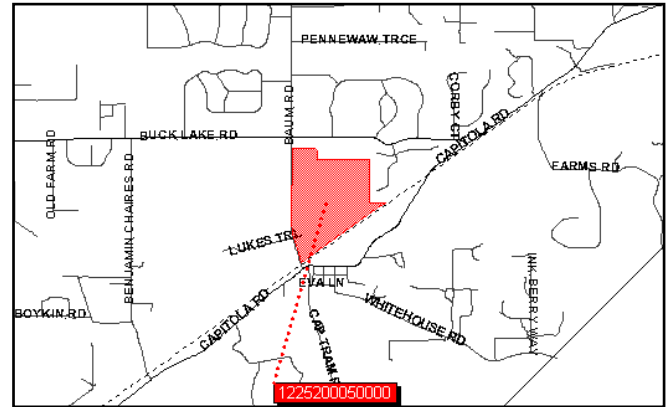
RESOLUTION

None at this time.

OTHER

Sensitive Land Acquisitions

1. Copeland Sink- Blueprint has recently secured this 168 Ac. parcel as part of a FCT Grant. This parcel is a portion of the parcels designated as protection of the Headwaters of the St. Marks.



2. Blueprint has secured an Option Agreement for a Conservation Easement on a 132 acre tract of land at the Headwaters of the St. Marks. This parcel is a Priority 1 parcel within the St. Marks Basin. We currently have an agreement in principle for the option agreement and are working with the Northwest Florida Water Management District to finalize this Conservation Easement within the next few months.

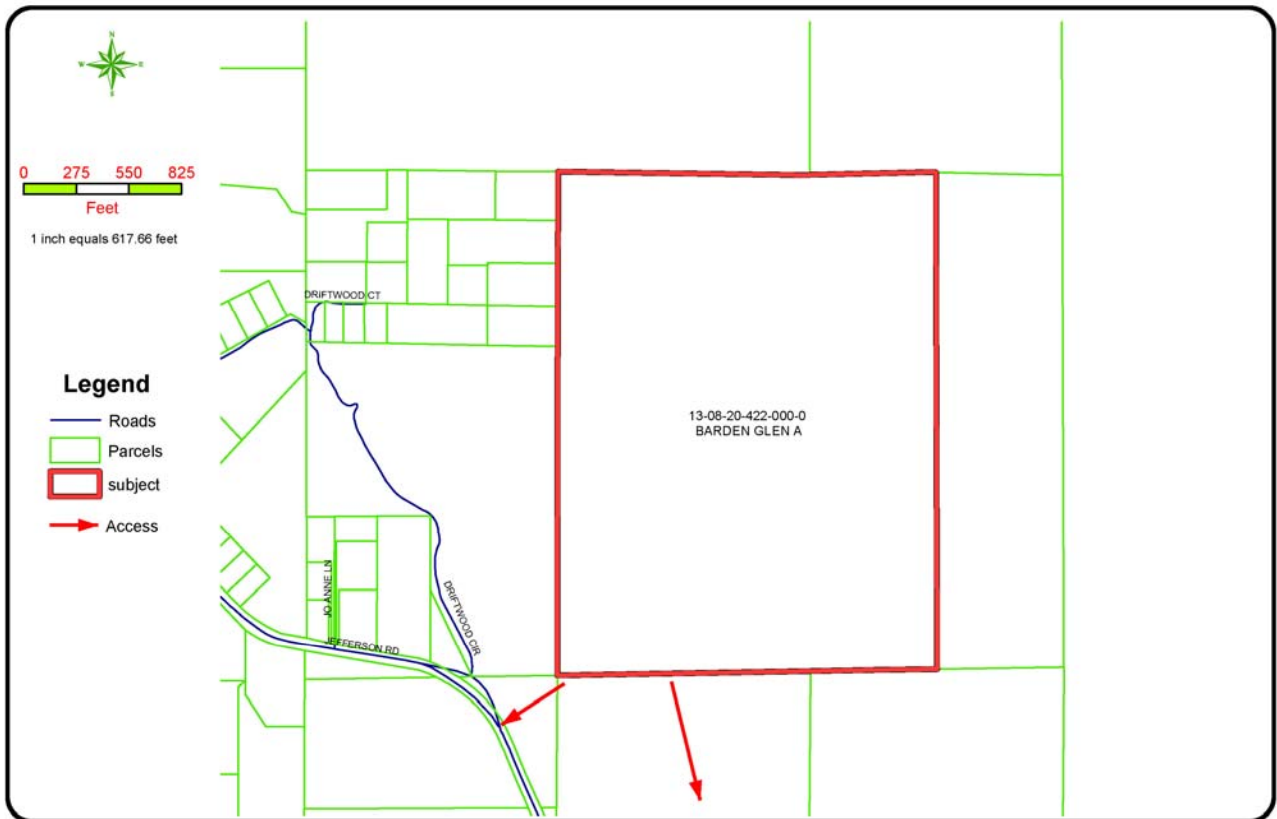


3. Blueprint is currently appraising and dealing with the property owners on a 200-acre parcel of land as part of a possible purchase or Conservation Easement for greenway preservation on Capital Circle NW.

OTHER

Sensitive Land Acquisitions (continued)

- Blueprint has recently begun discussions with the owner of the Patty Sink concerning that tract as well as other contiguous parcels for possible purchase of conservation easements as part of preservation of the Headwaters of the St. Marks.



DISCLAIMER
 This map was created using data obtained from the Tallahassee-Leon County Geographic Database. This document was prepared for the presentation of the information shown and is not intended to replace site-specific or case-specific investigations. Tallahassee-Leon County does not guarantee the accuracy of the data shown herein or the conclusions and decisions any responsibility or liability for inappropriate change of state or interpretation or decisions based thereon.



PATTY SINK
Exhibit D
 Tax Map

Prepared For: Blueprint 2000	
Scale = 1: 5,932	Drawn By: weismans
Sheet No:	Checked by:
Job No:	Date Drawn: 04/30/2004

File Name: E:\DataRequests\BP2000_Grants\042004\PattySink\Exhibit_D.mxd