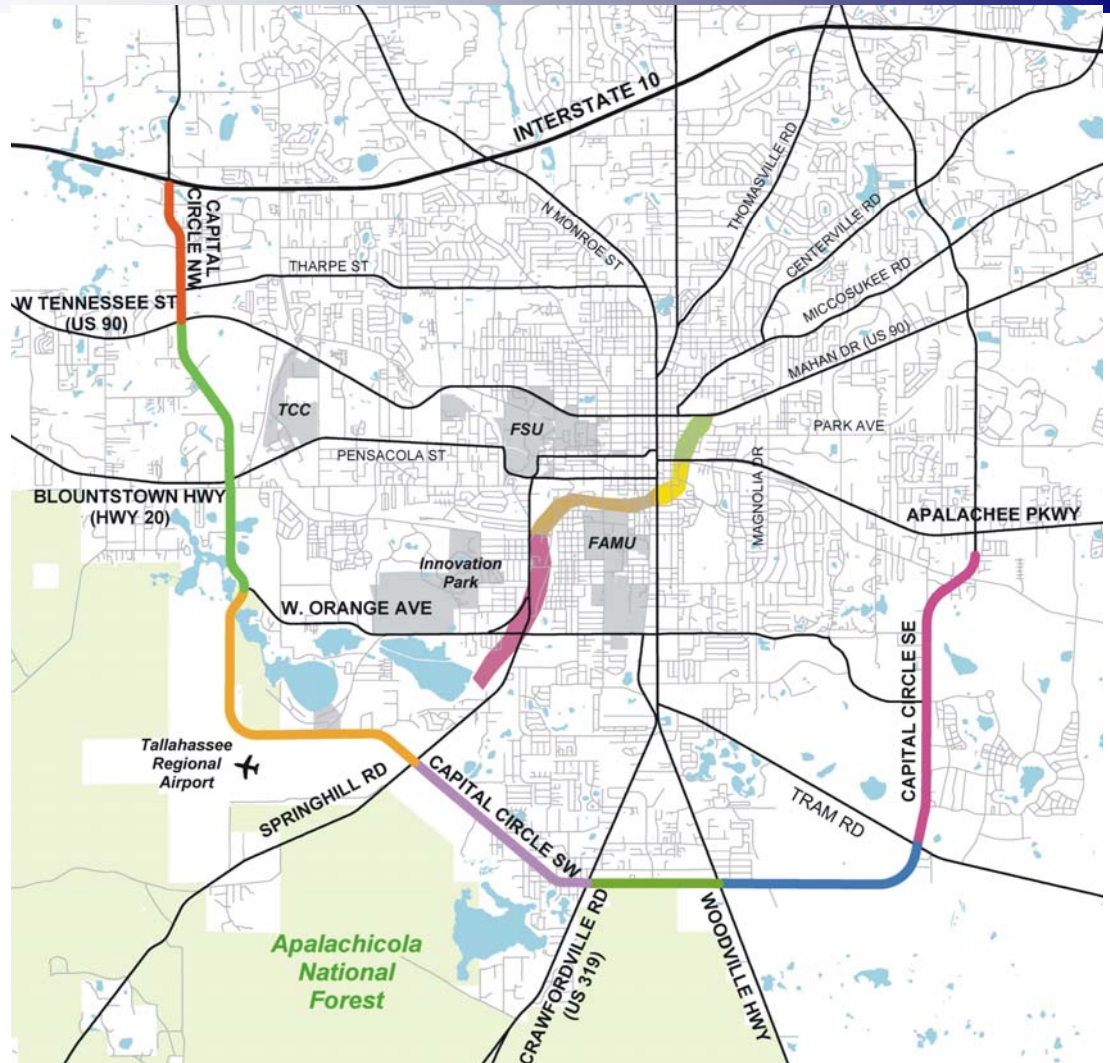


October, 2005



**BLUEPRINT 2000 & BEYOND**

1311 Executive Center Drive, Suite 109  
Koger Center, Ellis Building  
Tallahassee, Florida 32301

---

## TABLE OF CONTENTS

### I. Monthly Progress Reports

|   | <u>Page</u> |
|---|-------------|
| A. GEC Progress Report                                      | 1           |
| B. Public Involvement                                       | 5           |
| C. C0 - Capital Cascade Trail                               | 6           |
| D. E1 - Capital Circle Southeast (Tram to Connie)           | 12          |
| E. E2 - Capital Circle Southeast (Woodville to Tram)        | 18          |
| F. E3 - Capital Circle South (Woodville to Crawfordville)   | 21          |
| G. N1 - Capital Circle Northwest (US 90 to I-10)            | 23          |
| H. N2 - Capital Circle Northwest/Southwest (US 90 to SR 20) | 25          |
| I. W1 - Capital Circle Southwest (Springhill to SR 20)      | 29          |
| J. Other - Sensitive Lands Acquisition                      | 31          |

## **GEC – GENERAL ENGINEERING CONSULTANT**

### **Project Description:**

General Engineering Consultant Contract for the Blueprint Intergovernmental Agency. THE LPA GROUP INCORPORATED is the Prime Consultant with Jacobs Civil, Incorporated as the major subconsultant. Twelve additional subconsultants, seven of which are MBE firms, make up the LPA/Jacob Blueprint GEC Management Team.

### **Key Personnel:**

Program Manager: Jerry Oshesky - The LPA Group  
 Engineering Manager: Bill Little – Jacobs

### **Contract Cost & Schedule Status – Contract 597**

|                                      |                 |
|--------------------------------------|-----------------|
| Original Contract Amount:            | \$ 2,341,236.00 |
| Fiscal Year Re-Authorization:        | \$ 1,874,772.51 |
| Executed Supplemental Agreements:    | \$ 0.00         |
| Pending Supplemental Agreements:     | \$ 0.00         |
| Current Contract Amount:             | \$ 4,216,008.51 |
| Invoiced to Date:                    | \$ 3,736,533.18 |
| Remaining Contract Amount:           | \$ 479,475.33   |
| Percent of Contract Amount Complete: | 88.6%           |

**GEC – GENERAL ENGINEERING CONSULTANT**

| <b>Subconsultant Participation:</b>                                     | <b>Contract Amt</b>    | <b>% of GEC Contract</b> | <b>ETD</b>             |
|---|------------------------|--------------------------|------------------------|
| Moore Bass Consulting<br><i>Stormwater &amp; Landscaping</i>            | \$ 75,667.00           | 1.79                     | \$ 36,820.93           |
| Pope Environmental<br><i>Environmental Services</i>                     | \$ 115,342.00          | 2.74                     | \$ 81,632.50           |
| OLH International<br><i>Program Controls</i>                            | \$ 703,527.84          | 16.69                    | \$ 727,476.61          |
| Katherine Beck Consulting<br><i>Government Relations</i>                | \$ 25,000.00           | 0.59                     | \$ 8,854.41            |
| Quest Corporation of America<br><i>Public Involvement</i>               | \$ 121,958.00          | 2.89                     | \$ 152,522.90          |
| Uzzell Advertising<br><i>Public Relations, Web Maint.</i>               | \$ 82,405.00           | 1.95                     | \$ 99,041.51           |
| Welch & Ward Architects<br><i>Architecture, Recreation Facilities</i>   | \$ 8,000.00            | 0.19                     | \$ 0.00                |
| THC Right-of-Way Services, Inc.<br><i>R/W appraisal and acquisition</i> | \$ 428,320.00          | 10.16                    | \$ 389,875.48          |
| Berryman & Henigar<br><i>Survey and mapping</i>                         | \$ 79,055.00           | 1.88                     | \$ 53,047.77           |
| Weigal - Veasey<br><i>Property Appraisal</i>                            | \$ 37,847.59           | 0.90                     | \$ 0.00                |
| Williams Earth Sciences<br><i>Geotechnical Services</i>                 | \$ 38,023.66           | 0.90                     | \$ 11,296.44           |
| Allen Nobles & Associates<br><i>Survey</i>                              | \$ 70,000.00           | 1.66                     | \$ 73,726.00           |
| THE LPA GROUP (PRIME)<br><i>Prime Consultant</i>                        | \$ 1,402,706.14        | 31.81                    | \$ 1,199,515.29        |
| JACOBS (PRIME SUB)<br><i>Prime Subconsultant</i>                        | \$ 1,028,156.28        | 24.39                    | \$ 875,987.33          |
| <b>Total:</b>   | <b>\$ 4,216,008.51</b> | <b>100.00%</b>           | <b>\$ 3,709,797.17</b> |
| <b>Total MBE Participation:</b>   | <b>\$ 1,131,899.84</b> | <b>26.84%</b>            | <b>\$ 1,106,348.86</b> |
| <b>MBE Participation to Date:</b>                                       |                        | <b>29.61%</b>            |                        |

---

## **GEC – GENERAL ENGINEERING CONSULTANT**

### **Project Status:**

Second Bi-Annual GEC Progress Report Completed (9/05)  
FY06 Authorizations Completed (9/05)

### **Activities Since Last Period:**

1. Continued Coordination for CCSE (E1) Seg 2 Permitting
2. Participated in FDOT Midway Presentation (8/31)
3. Finalized and Presented GEC Bi-Annual Performance Report
4. Regular Meetings with CCSE (E1) Contractor
5. Assisted with negotiations with E3 Consultant
6. Continued Coordination for E2 DB

### **Planned Activities for Next Period:**

1. Coordination with SouthWood, COT Electric for CCSE
2. Assist with Prep for RFQ for E2 DB
3. Continued Assistance with N1-CCNW and Groundbreaking
4. Continued active coordination with FDOT (including JPA TBD)
5. Implement Strategies for Blueprint Fund Leveraging
6. Coordinate with SouthWood for future funding opportunities (E2)
7. Blueprint Presentation for FES (10/20)

### **Significant Issues and Resolutions:**

#### ISSUE

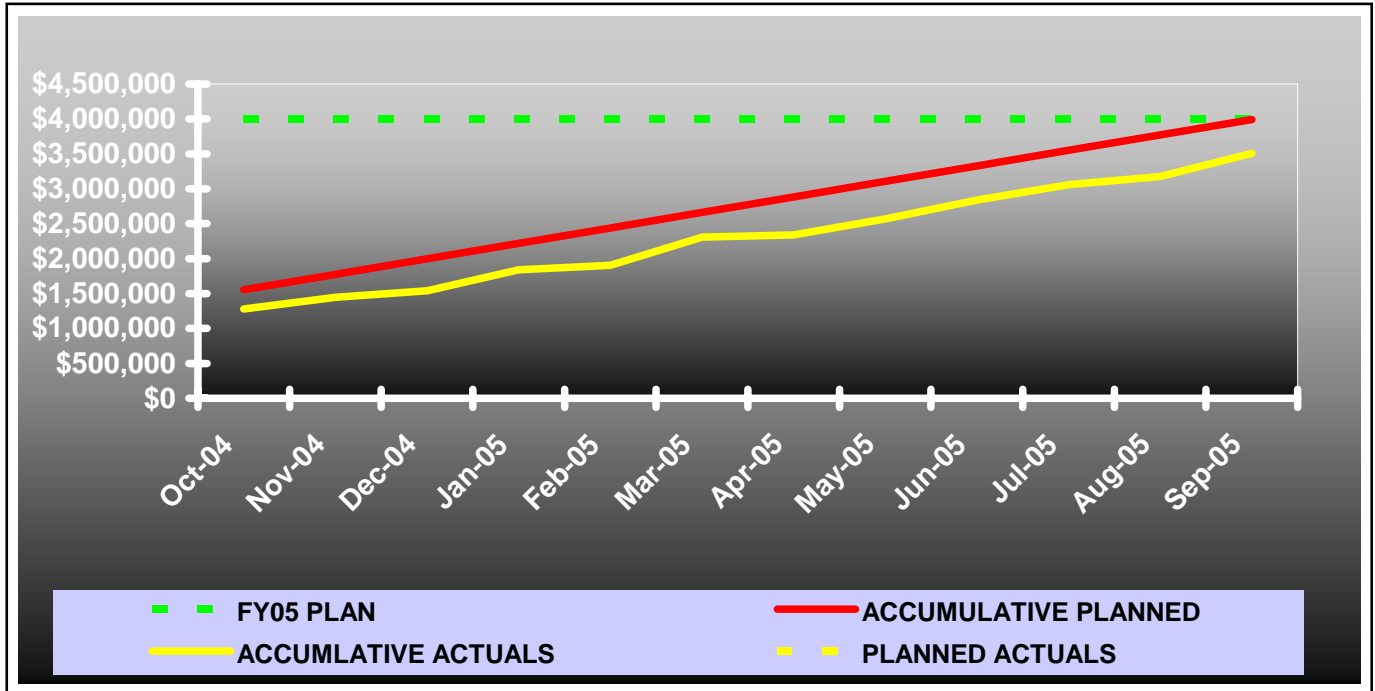
E1-CCSE Stormwater Facilities Master Plan

#### RESOLUTION

Continued monitoring with COT Growth and Environmental Office

**GEC – GENERAL ENGINEERING CONSULTANT**

**GEC Contract Financial Summary of Planned Vs. Actual Costs – FISCAL YEAR 2005**



## **GEC – PUBLIC INVOLVEMENT**

### **Personnel:**

|                        |                                    |                                |
|------------------------|------------------------------------|--------------------------------|
| <b>Blueprint 2000:</b> | <b>Public Involvement Manager:</b> | Bonnie Pfuntner, The LPA Group |
|                        | <b>Public Information Officer:</b> | Carlana Hoffman, QCA           |
|                        | <b>Public Information Officer:</b> | Susan Emmanuel, QCA            |

### **Activities Since Last Period:**

1. Attended two E1-CCSE CEI Meetings
2. Scheduling and Coordination for E2-CCSE Design-Build and CEI ads and selection
3. Survey notification flyer for N2-CCNW/SW and E2-CCSE
4. Coordination for N1-CCNW Ground Breaking/Press Conf
5. Public Involvement Scope development for CCT Phase 2 - Design
6. Coordination for Canopy Road Committee Meetings
7. Development and production of GEC Performance Report and presentation
8. Graphics support W1-CCSW map update
9. Attended N1-CCNW Public Meeting conducted by FDOT (9/22)

### **Planned Activities for Next Period:**

1. Coordination for N1-CCNW Ground Breaking/Press Conf
2. Coordination and notification of N2-CCNW/SW Public Hearing (12/8)
3. Scheduling and Coordination for E2-CCSE Design-Build and CEI ads and selection
4. Participation on CAC Performance Audit Sub-committee
5. Preparation assistance for special session IA meeting (TBD)
6. Write Article for Florida Transportation Magazine
7. Prep for presentations

### **Significant Issues and Resolutions:**

#### ISSUE

None at this time.

#### RESOLUTION

None at this time.

## C0 - CAPITAL CASCADES TRAIL - Master Plan

### Project Description:

This six mile long project area is commonly referred to as Capital Cascade Trail. It is Blueprint 2000 Map Area 3, a corridor along the St. Augustine Branch (SAB) from Tennessee Street to the SABs confluence with the Central Drainage Ditch (CDD) and then downstream along the CDD to its confluence with Munson Slough.

### Project Personnel:

|                        |                          |                        |
|------------------------|--------------------------|------------------------|
| <b>Blueprint 2000:</b> | <b>Planning Manager:</b> | David Bright           |
|                        | <b>Project Manager:</b>  | Ed Ringe/Gary Phillips |
| <b>Genesis:</b>        | <b>Project Manager:</b>  | Mark Llewellyn         |

### Contract Cost & Schedule Status - Agreement No. 533/Authorization 1 - As of 10/7/2005

|                                      |                 |
|--------------------------------------|-----------------|
| Contract Commencement:               | 08Oct03         |
| Contract Completion:                 | 08Apr05         |
| Percent of Work Performed:           | 90.0%           |
| Original Contract Amount:            | \$ 1,399,282.35 |
| Executed Supplemental Agreements:    | \$ 133,639.38   |
| Pending Supplemental Agreements:     | \$ 0.00         |
| Current Contract Amount:             | \$ 1,532,921.73 |
| Invoiced to Date:                    | \$ 1,479,323.35 |
| Remaining Contract Amount:           | \$ 115,406.89   |
| Percent of Contract Amount Complete: | 92.5%           |
| Original Contract Time:              | 548 Days        |
| Contract Time Extensions:            | 266 Days        |
| Current Contract Time:               | 814 Days        |
| Contract Time Expended:              | 730 Days        |
| Contract Time Remaining:             | 84 Days         |
| Percent Contract Time Expended:      | 89.7%           |

### Schedule Milestones:

|  |         |
|--|---------|
| Complete Draft Storm Water Master Plan                     | 31Jul05 |
| Finalize Stormwater Master Plan for TCC, CAC and IA action | 19Sep05 |
| Complete Final project report & Tech Appendix              | 30Sep05 |
| Complete Draft Storm Water Master Plan:                    | 31Jul05 |
| Finalize Stormwater Master Plan for TCC, CAC and IA action | 19Sep05 |
| Complete Final Project Report & Tech Appendix              | 30Sep05 |

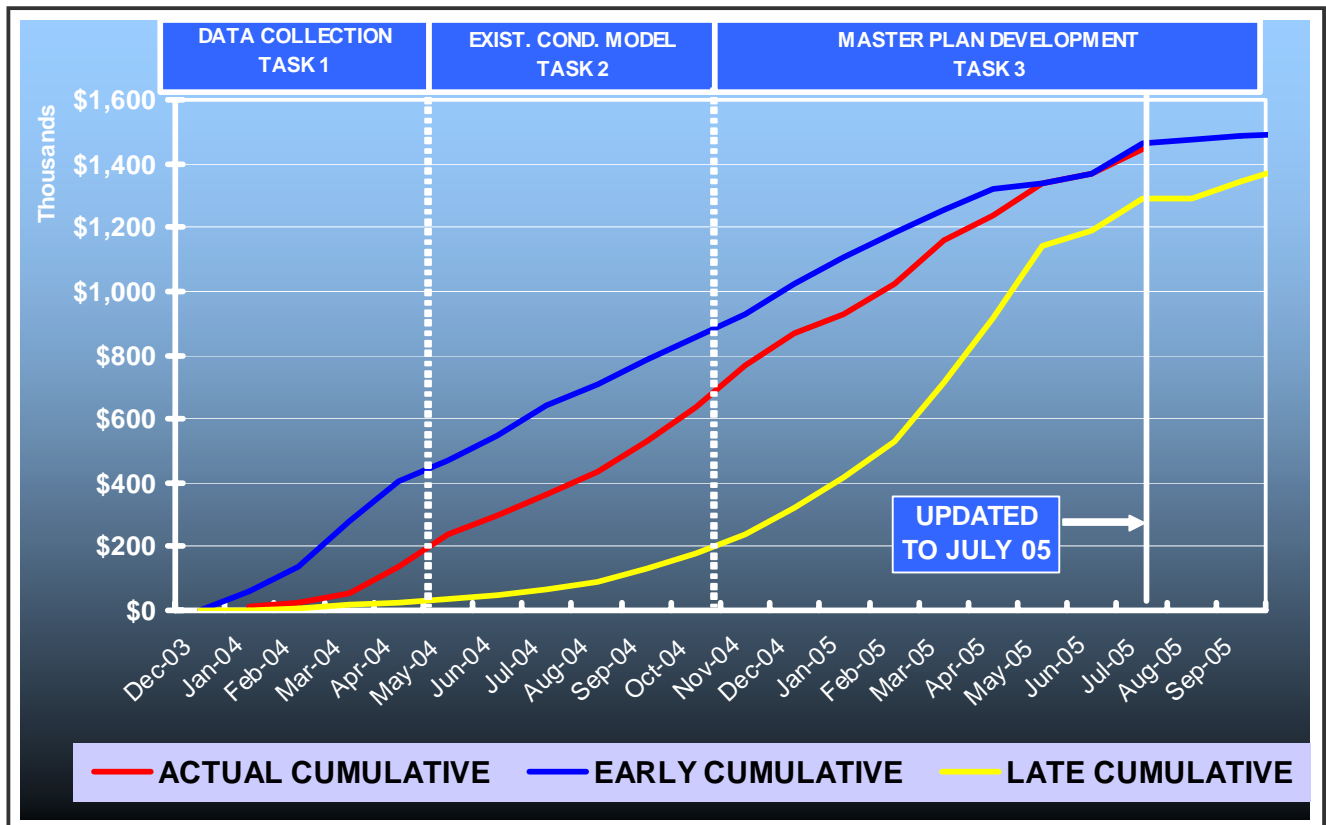


**C0 - CAPITAL CASCADES TRAIL - Master Plan**

| Subconsultant Participation:           | Contract Amt    | % of Design Contract | ETD           |
|--|-----------------|----------------------|---------------|
| <b>EGS</b>                             |                 |                      |               |
| <i>Environmental</i>                   | \$ 84,885.47    | 5.54                 | \$ 84,885.47  |
| <b>Moore Bass</b>                      |                 |                      |               |
| <i>Landscape Architecture</i>          | \$ 115,008.00   | 7.50                 | \$ 110,639.49 |
| <b>Archaeological Consultants Inc.</b> |                 |                      |               |
| <i>Historic and Archaeological</i>     | \$ 27,162.95    | 1.77                 | \$ 27,162.95  |
| <b>CDM</b>                             |                 |                      |               |
| <i>Stormwater</i>                      | \$ 235,598.00   | 15.37                | \$ 232,699.21 |
| <b>Biological Research Associates</b>  |                 |                      |               |
| <i>Natural Features Inventory</i>      | \$ 24,340.00    | 1.59                 | \$ 18,646.12  |
| <b>Greenways, Inc.</b>                 |                 |                      |               |
| <i>Park Programming</i>                | \$ 19,455.00    | 1.27                 | \$ 12,655.19  |
| <b>Jennings Environmental</b>          |                 |                      |               |
| <i>Stream Morphology</i>               | \$ 9,700.00     | 0.63                 | \$ 9,635.60   |
| <b>GENESIS GROUP (PRIME)</b>           |                 |                      |               |
| <i>Prime Consultant</i>                | \$ 1,016,772.32 | 66.33                | \$ 982,999.32 |

Total for all Design Subs: \$ 1,532,921.74 100.00% \$ 1,479,323.35  
 Total Design MBE Participation: \$ 227,056.42 14.81% \$ 222,687.91  
 Design MBE Participation to Date: 15.05%

**Contract Financial Summary of Planned Vs. Actual Costs with Time Extension**



## **C0 - CAPITAL CASCADES TRAIL - Master Plan**

### **Project Status:**

Project is in Phase 1, Master Plan Development. There are five tasks identified on the scope.

|  |               |
|--|---------------|
| Task 1 - Data Collection                     | 100% Complete |
| Task 2 - Existing Stream Hydraulics Analysis | 100% Complete |
| Task 3 - Comprehensive Corridor Master Plan  | 96% Complete  |
| Task 4 - Public Information Program          | 100% Complete |
| Task 5 - Documentation                       | 96% Complete  |

Phase 2, Tasks to be scoped and assigned as determined. Not established.

### **Activities Since Last Period:**

1. Met with DMS regarding the parking issues on Segment 2. DMS will meet with FDOT and FFWCC to discuss and resolve parking space concerns.
2. Expanded and updated the Phase 2 Planning and Design Team as requested. Prepared Information Package about nationally recognized Landscape Architecture team members
  - September 19, 2005 – IA meeting.
  - Expanded and updated the Phase 2 Planning and Design Team as requested.
3. Submitted the Wetland Inventory to FDEP and ACOE for review regarding Severance of Jurisdiction. Met with COT and County on results of wetland identification and assessment in project basins.
4. October 12, 2005 - Coordination meeting with the City regarding the contamination clean up.
5. Requested an Engineering Agreement from CSX Railroad – LPA will be authorized agent. HDR is CSX agent.
6. Submitted letter to Anita Favors Thompson regarding the need to begin planning for the Operation and Maintenance Costs for Segment 2.
7. Working to finalize TR #2 and TR #3

### **Planned Activities for Next Period:**

1. Next IA Meeting – date TBD
2. Finalize Scope of Services for Segment 2 Design and Master Plan Expansion Activities
3. Continue Coordination on Segment 2
4. Develop Engineering Agreement with CSX Intermodal
5. Maintain contact with the City on the contamination cleanup
6. Follow up with FDEP and ACOE regarding jurisdiction severance.
7. Begin staff-hour and fee review for Phase 2
9. Finalize TR #2

## **C0 - CAPITAL CASCADES TRAIL - Master Plan**

### **Significant Issues and Resolutions:**

#### ISSUE

Leon High School - Segment 0

#### RESOLUTION

Blueprint met with Bill Montford regarding his preferred concept and associated cost.

#### ISSUE

Segment 2 Contamination Clean Up (focus on Cascade Park outfall channel)

#### RESOLUTION

Provide close coordination with the City and WRs via regularly scheduled meetings regarding the schedule and site reclamation. Special attention will be given to the following issues:

- \* channel section between the R/R Bridge and South Monroe
- \* consistency of the proposed site excavation plan with future ponds
- \* construction sequencing
- \* Roadway demolishing plan
- \* utility relocations

*Blueprint 2000 is a member of the Cascade Park Remediation Team and will hold its first meeting October 12, 2005.*

#### ISSUE

FEMA Flood Map Amendment for the Existing Conditions (Segments 1, 2 and 3).

#### RESOLUTION

Finalize the Scope of Work (Blueprint and City). Proceed with the application and submittal process as soon as possible.

#### ISSUE

CSX Intermodal Coordination

#### RESOLUTION

Blueprint will follow-up with CSX Intermodal on developing Design Engineering Agreement.

#### ISSUE

Coordination with FDOT and DMS regarding Segment 2 improvements.

#### RESOLUTION

Blueprint met with DMS on September 21 to discuss proposed parking modifications. DMS will meet with FDOT and FFWCC the week of October 18 to finalize parking approval. DMS is favorable to designating 50% of current DOS lot to FDOT south of Gaines Street.

#### ISSUE

Establish Operation and Maintenance Responsibilities for the project.

#### RESOLUTION

Sent letter to Anita Favors Thompson on September 26 coordinating and planning for cost of CCT parks. COT Parks and Recreation will be closely involved in the Segment 2 Design.

---

## **C0 - CAPITAL CASCADES TRAIL - Master Plan**

### **Significant Issues and Resolutions (continued):**

#### ISSUE

Jurisdictional Severance

#### RESOLUTION

Blueprint completed Wetland Identification and Assessment in project basins. Approximately 6 acres were found in three high quality wetlands, with WRAP scores over 2.0. Provided assessment to DEP and ACOE for review. We are currently coordinating field review and group meeting with both agencies.

#### ISSUE

Scope of Services (Phase 2)

#### RESOLUTION

Blueprint is preparing Scope of Services for Phase 2 Segment 2 Design, Expansion of Master Plan Activities, and Myers Park SWMF. Draft of Segment 2 Scope of Services is due October 14, 2005.

#### ISSUE

Adoption of TMDL criteria

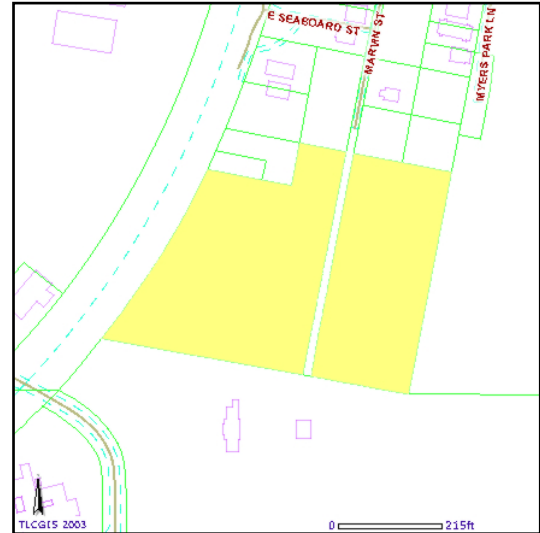
#### RESOLUTION

Blueprint will continue to monitor EPA actions and potential impact to CCT Master Plan and design options.

## C0 - CAPITAL CASCADES TRAIL - Master Plan

### Right-Of-Way Status Report:

1. There are several parcels near Myers Park that Blueprint and TPL are attempting to purchase for stormwater retention. At present Greg Chelius with TPL has had discussions with the property owner and they indicated their willingness to sell property. Blueprint has had the property appraised and is working through TPL and the property owner in an attempt to purchase this property in the near future.



2. Blueprint purchased a residential property at 218 FAMU Way within our land-banking program for Capital Cascade Trail. Blueprint was able to secure this property at the appraised value. Blueprint met with SHPO on August 12 to confirm the property and structure were not eligible for the NRHP and could be demolished as soon as possible due to health and safety concerns. SHPO agreed and we are currently working towards securing a consultant to manage the demolition of this house.



## E1 – CAPITAL CIRCLE SOUTHEAST – Tram Rd. to Connie Dr.

### Project Description:

The proposed 3.44-mile project along Capital Circle Southeast (US 319/SR261) extends from south of Tram Road to Connie Drive (milepost 1.931 and 5.371) in Leon County and includes expanding the existing two-lane undivided rural roadway to a six-lane divided urban (curb and gutter) facility. The purpose of the roadway improvement project is to increase the capacity and safety of the existing highway. New traffic signals, including ITS features, will be provided at six intersections: Tram Road, Shumard Oak Boulevard, Merchants Row Drive, Blair Stone Road, Orange Avenue and Old St. Augustine Road. The project also includes significant landscaping as well as pedestrian, bicycle and recreational amenities.

### Project Personnel:

|                        |                              |                  |
|------------------------|------------------------------|------------------|
| <b>Blueprint 2000:</b> | <b>Engineering Manager:</b>  | Bill Little      |
|                        | <b>Project Manager:</b>      | Marek Romanowski |
|                        | <b>Construction Manager:</b> | Garrett Martin   |
| <b>PBS&amp;J:</b>      | <b>Project Manager:</b>      | David Freni      |

### Contract Cost & Schedule Status:

|                                      |                  |
|--------------------------------------|------------------|
| Contract Commencement:               | 10Jan05          |
| Contract Completion:                 | 10Jan08          |
| Percent of Work Performed:           | 20.8%            |
| <br>                                 |                  |
| Original Contract Amount:            | \$ 30,796,339.34 |
| Executed Supplemental Agreements:    | \$ 5,398,808.55  |
| Pending Supplemental Agreements:     | \$ 10,780.00     |
| Current Contract Amount:             | \$ 36,195,147.89 |
| Invoiced to Date:                    | \$ 7,529,599.62  |
| Remaining Contract Amount:           | \$ 28,665,548.27 |
| Percent of Contract Amount Complete: | 20.8%            |
| <br>                                 |                  |
| Original Contract Time:              | 1095 Days        |
| Contract Time Extensions:            | 11 Days          |
| Current Contract Time:               | 1106 Days        |
| Contract Time Expended:              | 0 Days           |
| Contract Time Remaining:             | 1106 Days        |
| Percent Contract Time Expended:      | 0.0%             |

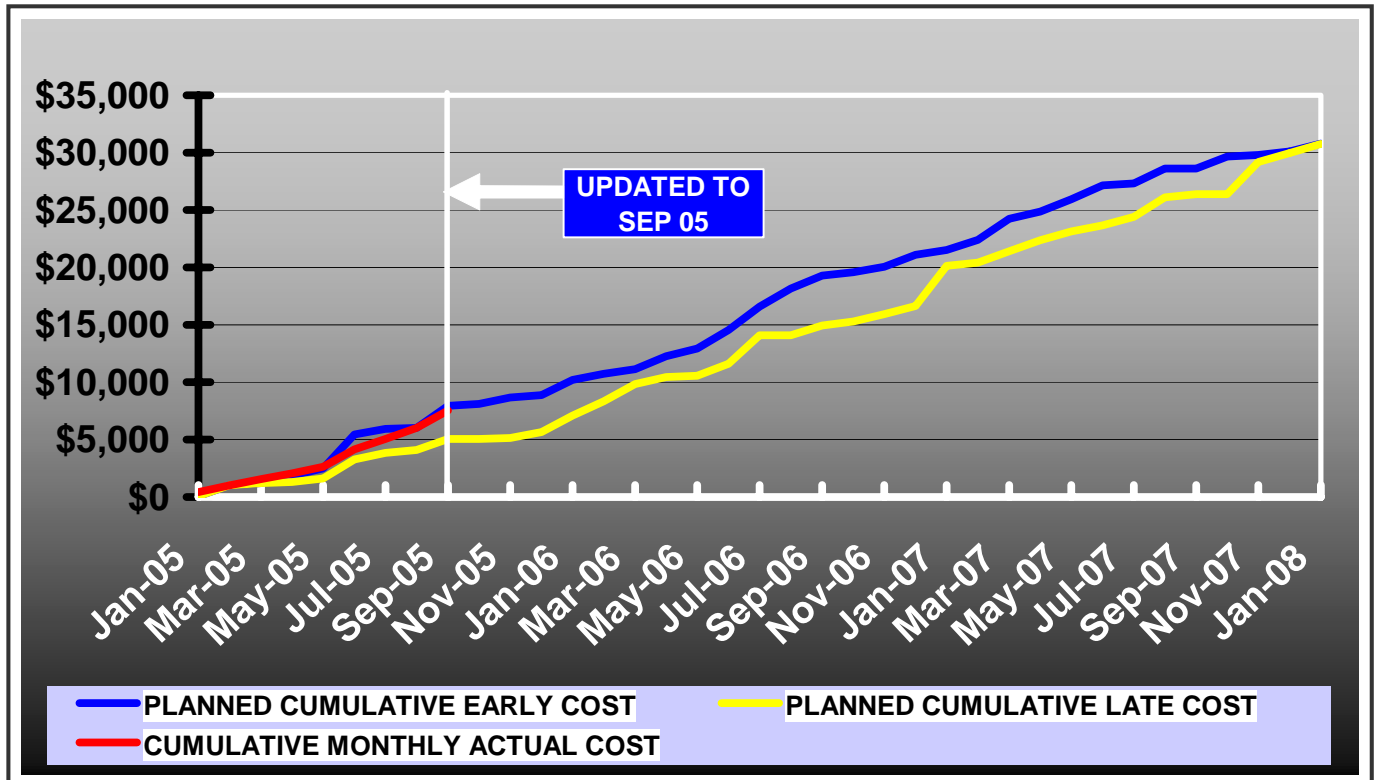
### Schedule Milestones:

|   |         |
|---|---------|
| Intergovernmental Agency (IA) Approval  | 20Sep04 |
| Execute Contract                        | 22Dec04 |
| Notice to Proceed                       | 10Jan05 |
| Right of Way Acquisition, Phase 1       | 01May05 |
| Right of Way Acquisition, Phase 2       | 01Sep06 |
| 60% Design Submission – Segment I       | 28Feb05 |
| 90% Design Submission – Segment II      | 15Apr05 |
| 90% Design Submission– Segment III      | 12May05 |
| 90% Design Submission– Segment IV       | 08Aug05 |
| Final Design Submission – Segment II    | 09May05 |
| Final Design Submission– Segment I, III | 24Jun05 |
| Final Design Submission– Segment IV     | 20Sep05 |
| Contract Completion                     | 08Jan08 |



**E1 – CAPITAL CIRCLE SOUTHEAST – Tram Rd. to Connie Dr.**

**DB Team Financial Summary of Planned Vs. Actual Costs**





## **E1 – CAPITAL CIRCLE SOUTHEAST – Tram Rd. to Connie Dr.**

### **Project Status:**

Erosion Control and Clearing and Grubbing work is complete from Tram Road to Merchants Row Boulevard. COT Water/Sewer Utility Joint Project Agreement with Blueprint 2000 was executed on 6/08/05. Utility Relocation permit has been issued on 6/10/05 by COT Streets and Drainage Department. EMP permit application for Segment 2 has been submitted and is being processed by COT Growth Management. Design for Segment 4 is 90% complete and has been reviewed by Blueprint. The 90% plans for this Segment are currently being reviewed by Public Works. Design for Segments 3 and 1 is 90% complete and the plans are being reviewed by Blueprint. Conditional permit to place fill on Segment 2 has been granted by COT and DEP. Clearing and grubbing and installation of erosion control measures on this Segment is underway. Placing of fill will commence soon. Work on COT Water Utility 30" Sanitary Bypass (WP 1) is in progress. Work on COT Water Utility potable water, re-use water and gravity sewer lines installation and relocation has been started.

### **Activities Since Last Period:**

1. The DB Team has submitted 90% complete plans for Seg. 4. The plans were reviewed by BP2K and are presently being reviewed by Public Works.
2. The DB Team has submitted 90 % complete plans for Seg. 3 & 1. Plans are being reviewed by BP2K.
3. Public Works have released final plans for Seg. 2 for permitting. The DB Team has updated permit application.
4. The DB Team obtained a conditional permit for fill placement on Seg. 2 & 3 from the City, and from DEP for Seg. 3.
5. BP2K and the DB Team coordinated with COT Electric regarding impacts on Transmission lines between Blairstone & Monday Street.
6. DB Team prepared EMP permit application for Seg. 4 (ready to submit after plans release by PW).

### **Planned Activities for Next Period:**

1. Conduct design progress meeting and CEI meeting.
2. Continue working towards 100% plans on Segments 1, 3 and 4.
3. Submit EMP permit application for Segment 4.
4. Partnering Meeting to be rescheduled in November.
5. Provide updated roadway plans and schedules to utility companies for Seg. 1, 3 and 4

### **Construction Update:**

1. MOT, Erosion Control and clearing on Segment 2 only construction activities on-going.
2. Main construction activities have stopped awaiting EMP permit on Segment 2.
3. Continue construction of 30" sanitary sewer bypass at Riggins Road and utility relocation in Seg. 2.
4. Process two additional work change orders (median break at Midyette Rd., chilled water lines at Shumard Oaks Blvd)
5. Dispute Resolution Board Meeting held on 8/30/05.
6. Utility construction work on bypass line on-going
7. Sodding completed and temporary drainage controls in place.

### **Significant Issues and Resolutions:**

1. Right-of-way and easement issues with COT Electric Utility.
2. Canopy Road: intersection of CCSE / Old St. Augustine Road.
3. Permitting.

**E1 – CAPITAL CIRCLE SOUTHEAST – Tram Rd. to Connie Dr.**

**Right-Of-Way Status Report:**

As of 10/13/05

|  |    |
|--|----|
| NEGOTIATING                            | 9  |
| SECURED THROUGH OT                     | 12 |
| DONATION (ST. JOE, STATE LANDS & CITY) | 14 |
| AGREEMENT SECURED BY NOT CLOSED        | 3  |
| SECURED THROUGH NEGOTIATED SETTLEMENT  | 22 |
| TOTAL PARCELS ON PROJECT               | 60 |

1. There are 13 parcels at Tram Road and Capital Circle SE requiring right of way acquisition and/or relocation services. Blueprint has completed the appraisals and made offers. At the present time, we are negotiating with property owners for the purchase of the necessary right of way. In addition, the relocation process is also underway.

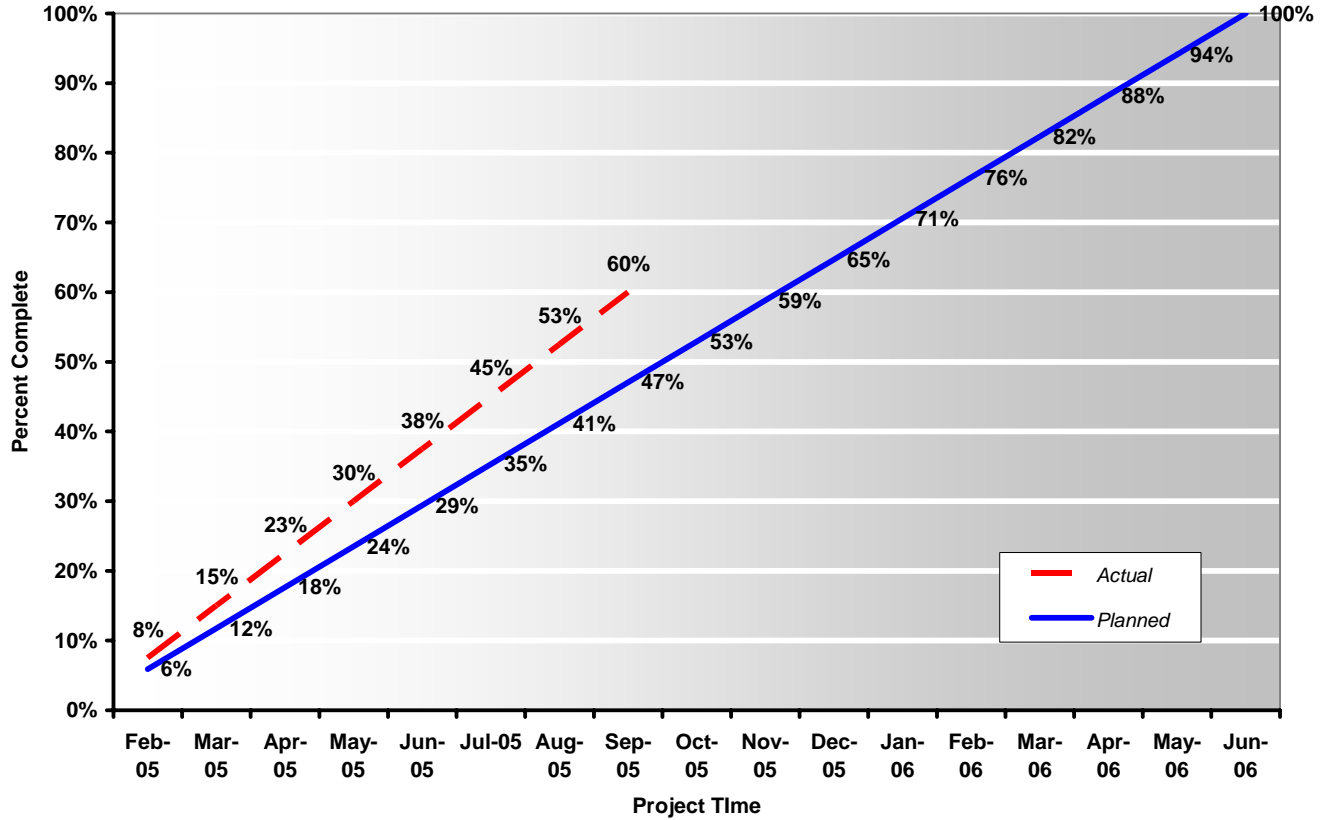


2. In addition to the right of way acquired by the City of Tallahassee, the SouthWood Property being donated within the JPA, and the parcels at Tram Road, there were also several tracts of land and right of way needed from the State of Florida. These state lands were secured in April. The SouthWood property was transferred to the City on May 16, 2005.



**E1 – CAPITAL CIRCLE SOUTHEAST – Tram Rd. to Connie Dr.**

Right-of-Way Aquisition Effort



## E2 - CAPITAL CIRCLE SOUTHEAST – Woodville Hwy. to Tram Rd.

### Project Description:

Conversion 2 Lane Rural highway to 6-lane urban limited access facility.

### Project Personnel:

**Blueprint 2000:**                    **Engineering Manager:** Bill Little  
    **Project Manager:** Doug Martin  
**DRMP:**                                **Project Manager:** John Burkett  
    **Assistant PM:** Bryant King

### Contract Cost & Schedule Status - Agreement No. 1098

Contract Commencement: 20Sep05  
 Contract Completion: 01Sep07  
 Percent of Work Performed: 0.0%

Original Contract Amount: \$ 912,692.13  
 Executed Supplemental Agreements: \$ 0.00  
 Pending Supplemental Agreements: \$ 0.00  
 Current Contract Amount: \$ 912,692.13  
 Invoiced to Date: \$ 0.00  
 Remaining Contract Amount: \$ 912,692.13  
 Percent of Contract Amount Complete: 0.0%

Original Contract Time: 711 Days  
 Contract Time Extensions: 0 Days  
 Current Contract Time: 711 Days  
 Contract Time Expended: 0 Days  
 Contract Time Remaining: 711 Days  
 Percent Contract Time Expended: 0.0%

| Design Subconsultant Participation: | Contract Amt  | % of Design Contract | ETD     |
|-------------------------------------|---------------|----------------------|---------|
| PBS&J                               | \$ 17,679.39  | 1.94                 | \$ 0.00 |
| <b>EGS</b>                          |               |                      |         |
| <i>Geotechnical</i>                 | \$ 101,211.21 | 11.09                | \$ 0.00 |
| <b>Poole</b>                        |               |                      |         |
| <i>Surveying</i>                    | \$ 75,645.96  | 8.29                 | \$ 0.00 |
| <b>DRMP (PRIME)</b>                 |               |                      |         |
| <i>Prime Consultant</i>             | \$ 718,155.57 | 78.69                | \$ 0.00 |

Total for all Design Subs: \$ 912,692.13 100.01% \$ 0.00  
 Total Design MBE Participation: \$ 176,857.17 19.38% \$ 0.00  
 Design MBE Participation to Date:

## **E2 - CAPITAL CIRCLE SOUTHEAST – Woodville Hwy. to Tram Rd.**

### **Project Status:**

This project is on a fast track to reach 60% design complete by Feb. 2006. Due to the fast track there are significant activities planned and ongoing. The Consultant (DRMP) "hit the ground running" when issued the notice to proceed. Four survey crews are performing data collection to get all location data gathered as quickly as possible. The list of planned activities indicates the level of activity occurring.

### **Activities Since Last Period:**

1. Completed Contract Execution
2. Issued LOA#1 for Part A of Scope of Services.
3. Met with SouthWood to discuss Pond Siting options.
4. Established invoice processing through Expedition

### **Planned Activities for Next Period:**

1. Receive and evaluate updated project schedule
2. Evaluate utility work progress
3. Evaluate right of way maps
4. Develop and Finalize Scope and RFP for Design-Build and CEI
5. Scheduling and Coordination for selection of Design-Build and CEI Teams
6. Update Schedule
7. Prepare Typical Section Package for QA/QC
8. Prepare QC Plan for Internal Review
9. Kickoff all Subconsultants
10. Internal Kickoff Meeting
11. Attend Project Manager's Meeting
12. Roadway Analysis and Plans
13. Review alternative alignment to evaluate right of way taking
14. Prepare preliminary line and grade based on GIS data
15. Establish construction baseline based on Connie to Tram baselines and available Right-of-Way information.
16. Drainage Analysis
17. Preliminary stormwater analysis for Pond site alternatives.
18. Evaluate additional potential right of way takes for stormwater capacity
19. Evaluate state and local drainage criteria
20. Begin pre-development drainage calculations
21. Collect offsite permit data
22. Environmental Analysis
23. Complete Map Review
24. Working on Field Review
25. Working on Preparation of NFI Maps using GIS Data
26. Field Survey
27. Completed PCN - Horizontal and Vertical
28. Marking Centerline Stations
29. Begin Section Survey

---

## **E2 - CAPITAL CIRCLE SOUTHEAST – Woodville Hwy. to Tram Rd.**

### **Significant Issues and Resolutions:**

#### ISSUE

The critical design time required dictates that the design concept regarding the stormwater control via linear ponds or offsite ponds must be determined ASAP.

#### RESOLUTION

Meeting held with SouthWood 9/12/2005. Currently waiting on input from SouthWood as to their preference.

## **E3-CAPITAL CIRCLE SOUTH – Woodville Hwy. to Crawfordville Rd.**

### **Project Description:**

This project proposes to widen approximately 1.13 miles of the existing two-lane Capital Circle South from Woodville Highway to Crawfordville Road to an ultimate six-lane facility,

FDOT Roadway ID: 55002000 SR 263 from MP 0.200 to MP 1.330

### **Project Personnel:**

|                         |                             |                 |
|-------------------------|-----------------------------|-----------------|
| <b>Blueprint 2000:</b>  | <b>Engineering Manager:</b> | Bill Little     |
|                         | <b>Project Manager:</b>     | Gary Phillips   |
| <b>URS Corporation:</b> | <b>Project Manager:</b>     | Masoud Foroughi |

### **Contract Cost & Schedule Status:**

Blueprint 2000 staff is performing current activities.

### **Schedule Milestones:**

|  |             |         |
|--|-------------|---------|
| Advertise for Design Consultant  | (Completed) | 29May05 |
| Letter of Interest (LOI) Due   | (Completed) | 21Jun05 |
| Shortlist Firms  | (Completed) | 01Jul05 |
| Issue Request for Proposals  | (Completed) | 08Jul05 |
| Preproposal Conference   | (Completed) | 14Jul05 |
| Written Proposals Due  | (Completed) | 29Jul05 |
| Finalize Review of Written Proposals   | (Completed) | 16Aug05 |
| Oral Presentations   | (Completed) | 16Aug05 |
| Selection of Design Consultant   | (Completed) | 16Aug05 |
| IA Authorizes Blueprint Staff to Negotiate and Execute Contract with Design Consultant | (Completed) | 19Sep05 |

### **Project Status:**

Held Staff-hour Negotiation meeting with URS.

### **Activities Since Last Period:**

1. Selected URS Corporation Southern
2. Held kickoff meeting and Negotiated Staff-hour Estimates

### **Planned Activities for Next Period:**

1. Receive Fee Schedules
2. Complete and Execute Contract
3. Issue LOA#1 and Notice to Proceed.

### **Significant Issues and Resolutions:**

#### ISSUE

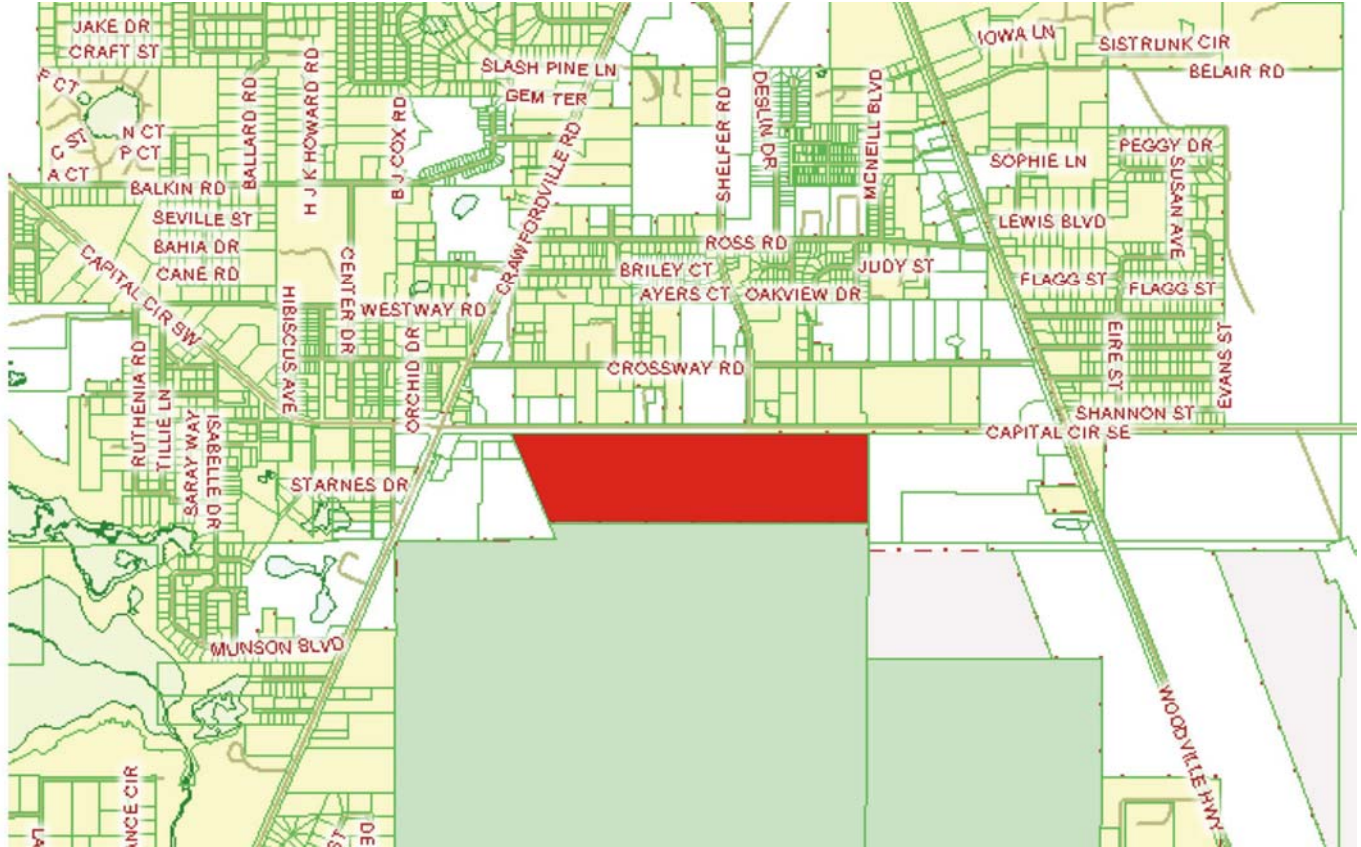
None at this time.

#### RESOLUTION

None at this time.

**E3-CAPITAL CIRCLE SOUTH – Woodville Hwy. to Crawfordville Rd.**

**Right-Of-Way Status Report:**



The Flea Market Tract owned by the United States Forest Service- Blueprint is currently working with the USFS to secure this 100 Acre parcel on Capital Circle between Woodville and Crawfordville Hwy. At this time, Blueprint is having discussions with the Forrest Service to facilitate a possible land swap with this property and other properties that the USFS desires. Blueprint is having appraisals completed to determine the value of this tract and those that the USFS desires to swap. We are in the early stages of discussions and much work is still ahead for both Blueprint and the USFS.



## N1 - CAPITAL CIRCLE NW – I-10 to US 90

### Project Description:

The proposed 1.991-mile roadway project (FPID: 219722-1) consists of upgrading the existing undivided rural facility to a six-lane divided urban (curb and gutter) facility. Upgrades to the West Tennessee, Tharpe, Hartsfield and Commonwealth intersections will also be included. The purpose of the roadway improvement project is to increase the capacity and safety of the existing highway. The roadway project will be designed, let and constructed by the Florida Department of Transportation, with advance funding provided by the Blueprint 2000 Intergovernmental Agency.

### Project Personnel:

|                           |                                      |                    |
|---------------------------|--------------------------------------|--------------------|
| <b>Blueprint 2000:</b>    | <b>Project Manager:</b>              | Garrett Martin     |
| <b>FDOT Design:</b>       | <b>Project Manager:</b>              | Brian Little       |
| <b>FDOT Construction:</b> | <b>Project Manager:</b>              | William Stoutamire |
| <b>PBS&amp;J</b>          | <b>CEI Project Administrator</b>     | Jerry McClure      |
| <b>PBS&amp;J</b>          | <b>CEI Senior Project Engineer</b>   | Steve Martin       |
| <b>FDOT</b>               | <b>Midway Operation Engineer</b>     | Gabriella Corbin   |
| <b>FDOT</b>               | <b>Midway Assnt. Operations Eng.</b> | Greg Ouzts         |

### Contract Cost & Schedule Status:

Not Applicable – The Project Design is being managed by FDOT.

### Schedule Milestones:

|   |         |
|---|---------|
| Complete 100% Plans                     | 22Dec04 |
| ROW, Permits and Utilities Clear        | 06Dec04 |
| Plans to Tallahassee (final processing) | 15Mar05 |
| Select CEI Consultant                   | 14Mar05 |
| Letting Date                            | 25Jun05 |
| Begin Construction                      | 15Oct05 |

### Project Status:

- Construction began September 26th 2005. This was contract day 1 of 825.
- The Notice to Proceed was issued on September 14th 2005.
- The construction contract amount is for \$25,462,923.43 with M, Inc.
- Clearing and Grubbing work is being done on the Regional Facility Pond 1. No other work has begun at this time.



## N1 - CAPITAL CIRCLE NW – I-10 to US 90

### Activities Since Last Period:

1. Preconstruction Meeting at FDOT Midway Office 9/15/05
2. Coordination for Press Conference and Ground Breaking
3. Briefing for FDOT Midway Office 8/24/05, well received.
4. Notice To Proceed given on 9/14/05.
5. Construction work began on 9/26/05.
6. Regional Pond Facility 1 is the current item of work.

### Planned Activities for Next Period:

1. Attendance by Blueprint staff at Progress and CEI Meetings.
2. Ongoing Coordination for Ground Breaking and Press Conference

### Significant Issues and Resolutions:

ISSUE

JPA with FDOT for construction was executed on March 16, 2005.

RESOLUTION

### Right-Of-Way Status Report:

As of 10/13/05

|                                   |            |
|-----------------------------------|------------|
| CLOSED - (IN POSSESSION)          | 30         |
| AGREEMENTS SECURED BUT NOT CLOSED | 0          |
| DONATION                          | 4          |
| ACQUIRED THROUGH CONDEMNATION     | 91         |
| <b>TOTAL PARCELS ON PROJECT</b>   | <b>125</b> |

FDOT is currently updating the R/W Cost Estimate. It currently indicates the estimate to be \$45,000,000

**N2 - CAPITAL CIRCLE NW/SW – US 90 to SR 20**

**Project Description:**

The Expanded Project Development and Environment (PD&E) Study limits for this 2.9 mile project extend from Tennessee Street (US 90/SR 10) to Orange Avenue (SR 371). This project also includes the preparation of approximately 60% design plans, etc. from Tennessee Street to Orange Avenue.

**Project Personnel:**

**Blueprint 2000:**                      **Project Manager:**                      Jim Shepherd  
**H.W. Lochner:**                      **Project Manager:**                      Hugh Williams

**Contract Cost & Schedule Status - Agreement No. 772/Authorization 1 - As of 10/18/2005**

Contract Commencement:                      10May04  
 Contract Completion:                      10May07  
 Percent of Work Performed:                      42.5%

Original Contract Amount:                      \$            1,921,585.90  
 Executed Supplemental Agreements:                      \$            159,836.80  
 Pending Supplemental Agreements:                      \$                      0.00  
 Current Contract Amount:                      \$            2,081,422.70  
 Invoiced to Date:                      \$            883,918.00  
 Remaining Contract Amount:                      \$            1,197,504.70  
 Percent of Contract Amount Complete:                      42.5%

Original Contract Time:                      1095 Days  
 Contract Time Extensions:                      0 Days  
 Current Contract Time:                      1095 Days  
 Contract Time Expended:                      526 Days  
 Contract Time Remaining:                      569 Days  
 Percent Contract Time Expended:                      48.0%

| <b>Design Subconsultant Participation:</b>   | <b>Contract Amt</b>    | <b>% of Design Contract</b> | <b>ETD</b>           |
|--|------------------------|-----------------------------|----------------------|
| American Acquisition Group<br><i>Right of Way</i>  | \$ 95,201.78           | 4.57                        | \$ 57,200.89         |
| <b>Environmental Geotechnical Specialists</b><br><i>Geotechnical</i>                     | \$ 126,831.57          | 6.09                        | \$ 56,931.18         |
| <b>Diversified Design &amp; Drafting Services, Inc.</b><br><i>Survey and R/W Mapping</i> | \$ 443,781.44          | 21.32                       | \$ 171,324.60        |
| <b>Archaeological Consultants, Inc.</b><br><i>Cultural Resource Assessment</i>           | \$ 10,947.15           | 0.53                        | \$ 10,399.79         |
| HNTB/TEI<br><i>Traffic Analysis</i>  | \$ 80,310.59           | 3.86                        | \$ 78,302.83         |
| HW LOCHNER (PRIME)<br><i>Prime Consultant</i>  | \$ 1,324,350.17        | 63.63                       | \$ 509,758.71        |
| <b>Total for all Design Subs:</b>  | <b>\$ 1,986,220.92</b> | <b>95.43%</b>               | <b>\$ 826,717.11</b> |
| <b>Total Design MBE Participation:</b>   | <b>\$ 581,560.16</b>   | <b>27.94%</b>               | <b>\$ 238,655.57</b> |
| <b>Design MBE Participation to Date:</b>   |                        | <b>65.79%</b>               |                      |

## N2 - CAPITAL CIRCLE NW/SW – US 90 to SR 20

### Schedule Milestones:

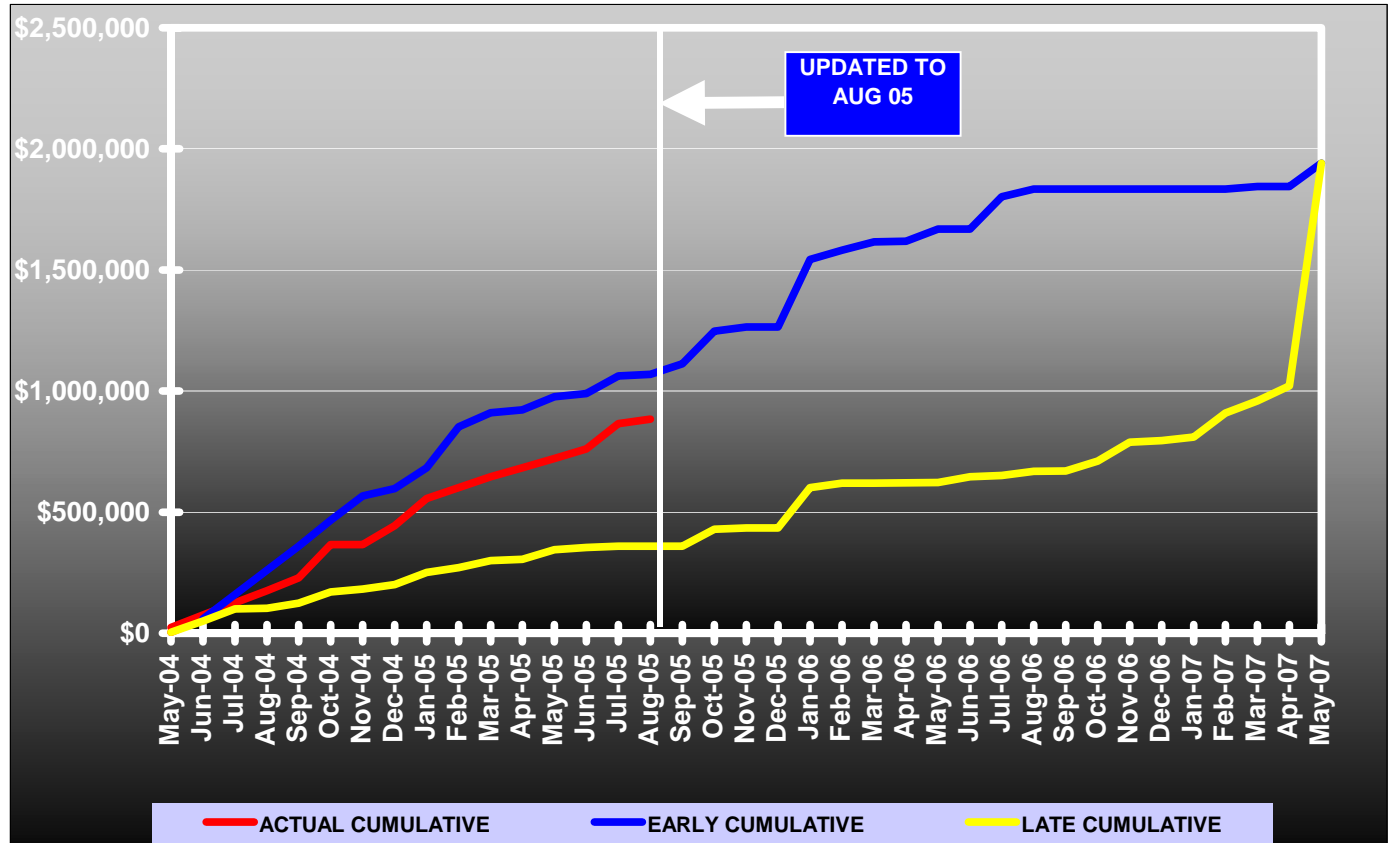
|                         |         |
|-------------------------|---------|
| Kickoff Meeting         | 13Jul04 |
| Draft Traffic Tech      | 01Nov04 |
| Phase 1 Geotech         | 01Dec04 |
| Final Traffic Tech      | 13Dec04 |
| Water Quality Eval.     | 03Jan05 |
| Draft Air Quality       | 24Jan05 |
| Draft Loc. Hydraulics   | 21Feb05 |
| Draft ESBA              | 21Feb05 |
| Draft Contamination     | 21Feb05 |
| Draft Noise Study       | 07Mar05 |
| C. Stage Relocation     | 24Jan05 |
| Roadway Concepts        | 07Feb05 |
| Draft PER               | 07Feb05 |
| Cultural Assessment     | 07Feb05 |
| Draft Pond Siting       | 09Feb05 |
| Draft Wetlands Eval.    | 21Feb05 |
| ROW Control Map         | 01Feb05 |
| Alt. Public Meeting     | 24May05 |
| Natural Features        | 21Jul05 |
| Final Pond Siting       | 09Sep05 |
| Phase 2 Geotech         | 09Sep05 |
| Public Hearing          | 16Sep05 |
| Draft Cat Ex            | 10Oct05 |
| Final Air Quality       | 10Oct05 |
| Final Loc. Hydraulics   | 17Oct05 |
| Final ESBA              | 17Oct05 |
| Final Contamination     | 17Oct05 |
| Final Wetlands Eval.    | 17Oct05 |
| 30% Roadway Plans       | 21Oct05 |
| Draft Coordination Rpt. | 24Oct05 |
| Final Noise Study       | 14Nov05 |
| Final Coordination Rpt. | 21Nov05 |
| Final PER to FHWA       | 22Nov05 |
| Final Cat Ex            | 25Jan06 |
| 60% Roadway Plans       | 06Feb06 |
| Bridge Dev. Report      | 10Feb06 |
| Env. Impact Analysis    | 13Feb06 |
| 90% ROW Maps            | 13Feb06 |
| Final ROW Maps          | 11Apr06 |

### Project Status:

Fine-tuning alternative concepts  
 Updating environmental and engineering analyses  
 Updating environmental and engineering reports  
 Submitted the recommended alignment  
 Preparing to begin the preliminary design  
 Preparing for the Public Hearing

## N2 - CAPITAL CIRCLE NW/SW – US 90 to SR 20

### Contract Financial Summary of Planned Vs. Actual Costs



### Activities Since Last Period:

1. Received review comments on pond siting and mitigation report and Preliminary Engineering reports - commenced updating
2. Continued the structural analysis for bridges at CSX RR and Gum Swamp.
3. Continuing negotiations for SA #3, for extension of preliminary design services from SR 20 to Orange Avenue.
4. Continue updating Environmental Reports based on review comments, and preferred alternative (when selected).
5. Met with School Board representative and with adjacent property owner representative on Sept. 28 to coordinate access.
6. Met with Leon County Growth Mgmt. for tentative approval of roadway crossing of Gum Swamp, with a short bridge, a raised grade with underdrain exfiltration, mitigation, retaining walls, and culverts.
7. Seeking Permit delegation from City to County
8. Revised SR 20 alignments based on FDOT's 1997 PD&E Study
9. Continued coordination with Delta Park property owner for stormwater, access, and R/W
10. Evaluated concepts for connection of CCNW/SW to Alt. 4C For CCSW
11. Commenced topo survey from north project limits to CSX RR
12. Set Public Hearing for Dec. 8 - commenced preparations

## **N2 - CAPITAL CIRCLE NW/SW – US 90 to SR 20**

### **Planned Activities for Next Period:**

1. Continue update of the Environmental and Engineering Reports based on review comments, and selection of preferred alternative.
2. Review and comment, or concur with preferred alternative recommendation, in order to allow preliminary design and survey activities to proceed.
3. Complete negotiations and provide NTP for SA #3.
4. Submit separate 4(f) Determinations for Gum Swamp and National Forest property.
5. Revise and re-submit 4(f) Determinations of Applicability, as needed
6. Continue to urge Museum Board to render a decision on un-classification of east side of Capital Circle as 4(f)
7. Update SR 20 impacts and cost estimates based on the revised alternatives.
8. Update concepts as needed to reflect changes at Delta Park, north frontage road, School Board property, etc.
9. Continue Survey
10. Prepare for Dec. 8 Public Hearing

### **Significant Issues and Resolutions:**

#### ISSUE

Transition south of Orange Avenue.

#### RESOLUTION

#### ISSUE

SR 20 alignment.

#### RESOLUTION

#### ISSUE

SR 20 typical section.

#### RESOLUTION

#### ISSUE

Bridging of Gum Swamp.

#### RESOLUTION

#### ISSUE

Pond and mitigation alternatives.

#### RESOLUTION

#### ISSUE

Leon County School Board Maintenance Facility access.

#### RESOLUTION

## W1 - CAPITAL CIRCLE SW – Springhill Road to SR 20

### Project Description:

Capital Circle (SR 263) between Springhill Road (CR 2203) and Blountstown Highway (SR 20) a distance of approximately 4.5 miles.

Using the Blueprint 2000 & Beyond “Project Definitions Report”, prepared by the Economic and Environmental Consensus Committee in 1999; the Lake Bradford Sector Plan, conducted by the Tallahassee/Leon County Planning Department; and based upon public input, Blueprint 2000 staff has identified and evaluated 17 alternative alignments, which are located in three corridors. Corridor 1 includes upgrading Capital Circle along the existing alignment; Corridor 2 includes constructing the proposed improvements to the south and west of the Tallahassee Regional Airport; Corridor 3 includes constructing the proposed improvements using portions of Orange Avenue, Tyson Road, Springhill Road, or a new alignment, etc.

### Project Personnel:

|                        |                          |              |
|------------------------|--------------------------|--------------|
| <b>Blueprint 2000:</b> | <b>Planning Manager:</b> | Dave Bright  |
|                        | <b>Project Manager:</b>  | Jim Shepherd |

### Contract Cost & Schedule Status:

The current activities are being performed by Blueprint 2000 staff. The upcoming PD&E Study will be conducted by a consultant.

### Schedule Milestones:

|  |         |
|--|---------|
| First Citizens Group Meeting                                   | 18Jan05 |
| First Public Meeting   | 25Jan05 |
| Second Citizens Group Meeting                                  | 24Feb05 |
| Second Public Meeting  | 01Mar05 |
| Third Citizens Group Meeting                                   | 29Mar05 |
| Third Public Meeting   | 05Apr05 |
| Fourth Citizens Group Meeting                                  | 01Aug05 |
| Fourth Public Meeting  | 01Aug05 |
| TCC Approves Scope for PD&E Study                              | 06Sep05 |
| IA Authorizes Blueprint Staff to Advertise for PD&E Consultant | 19Sep05 |
| IA Approves Alignments that are to be included in PD&E Study   | 19Sep05 |

### Project Status:

On September 19, 2005, the IA authorized staff to:

1. Advertise, select and award a contract for a PD&E consultant
2. Include only Corridor 3 in the upcoming PD&E Study
3. Send a letter to FDOT stating the planned approach for the PD&E Study.

*Blueprint staff has prepared the letter and sent it to FDOT for a response.*

---

## **W1 - CAPITAL CIRCLE SW – Springhill Road to SR 20**

### **Activities Since Last Period:**

1. Prepared the Agenda Item and presented it to the IA on September 19, 2005.
2. Made presentation to the Innovation Park Board on September 13, 2005.
3. Made presentation to the Southside Rotary Club on September 15, 2005.
4. Met with FSU planning staff on September 29, 2005.
5. Prepared and mailed letter to FDOT per the IA's direction.

### **Planned Activities for Next Period:**

1. Continue preliminary activities related to the advertisement for a PD&E Consultant.
2. Load alternative alignments into ETDM.

### **Significant Issues and Resolutions:**

ISSUE

FDOT response to Blueprint 2000's letter.

RESOLUTION

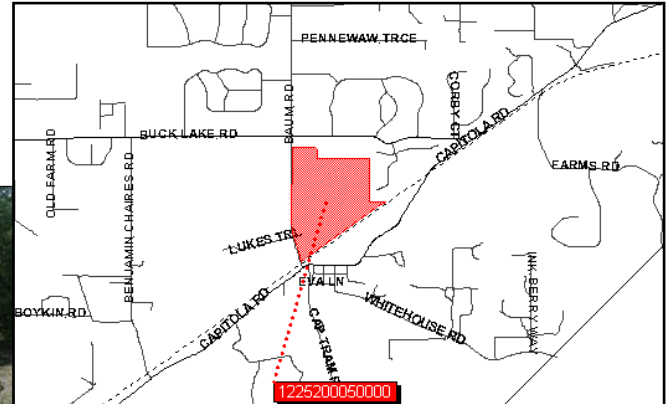
None at this time.



**OTHER**

**Sensitive Land Acquisitions**

1. Copeland Sink- At this time, Blueprint has secured this 168 Ac. parcel as part of a FCT Grant. This parcel is a portion of the parcels designated as protection of the Headwaters of the St. Marks.



2. Blueprint has secured an Option Agreement to secure a Conservation Easement on a 132 acre tract of land at the Headwaters of the St. Marks. This parcel is a Priority 1 parcel within the St. Marks Basin. We are currently scheduled to close on this easement in late October

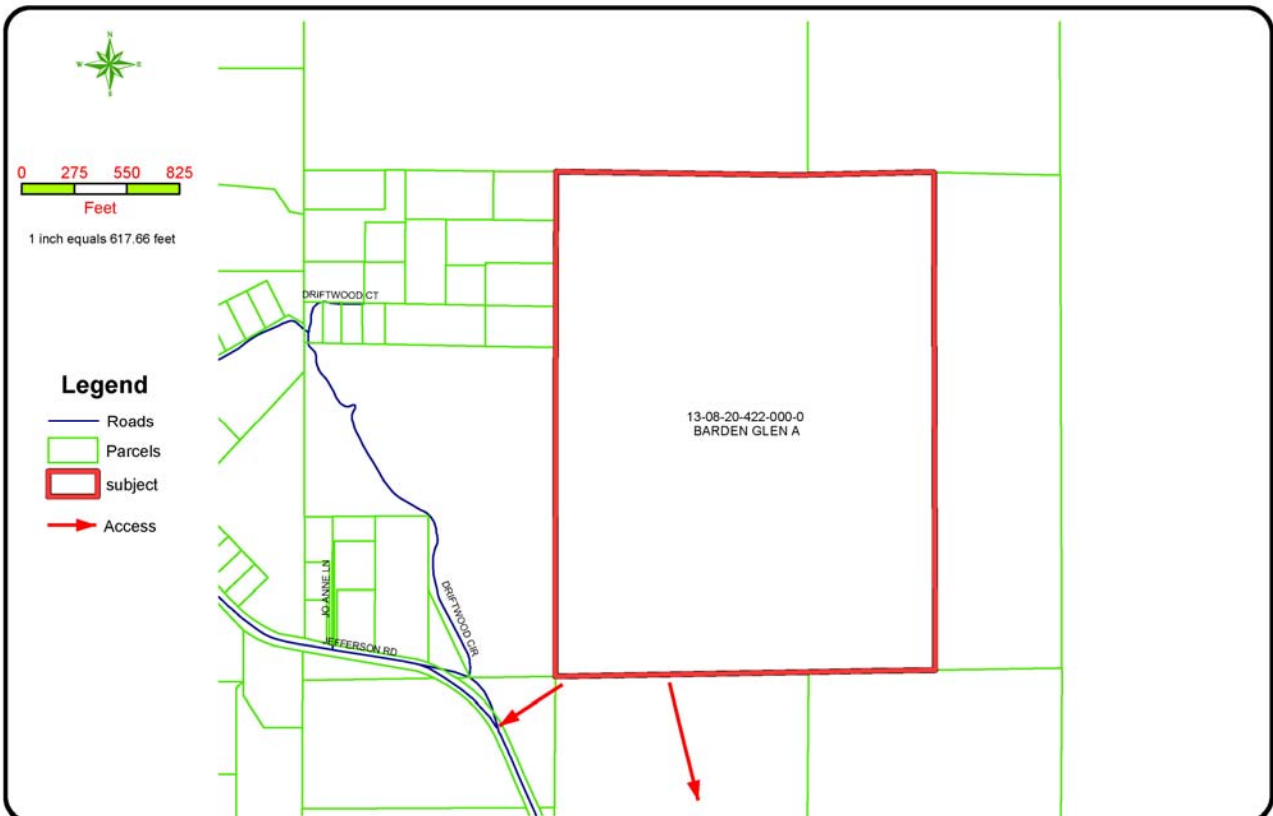


3. Blueprint is currently appraising and dealing with the property owners on a 200-acre parcel of land as part of a possible purchase or Conservation Easement for greenway preservation on Capital Circle NW.

**OTHER**

**Sensitive Land Acquisitions (continued)**

4. Blueprint has recently begun discussions with the owner of the Patty Sink concerning that tract as well as other contiguous parcels for possible purchase of conservation easements as part of preservation of the Headwaters of the St. Marks.



**DISCLAIMER**  
 This map was created using data obtained from the Tallahassee Leon County Geographic Database. This document was prepared for the presentation of the information shown and is not intended to replace site-specific or case-specific investigations. Tallahassee Leon County does not guarantee the accuracy or reliability for inappropriate change of scale or interpretation or decisions based thereon.



**PATTY SINK**  
**Exhibit D**  
**Tax Map**

|                              |                        |
|------------------------------|------------------------|
| Prepared For: Blueprint 2000 |                        |
| Scale = 1: 5,932             | Drawn By: weismans     |
| Sheet No:                    | Checked by:            |
| Job No:                      | Date Drawn: 04/30/2004 |

File Name: E:\DataRequests\BP2000\_Grants\042004\PattySink\Exhibit\_D.mxd