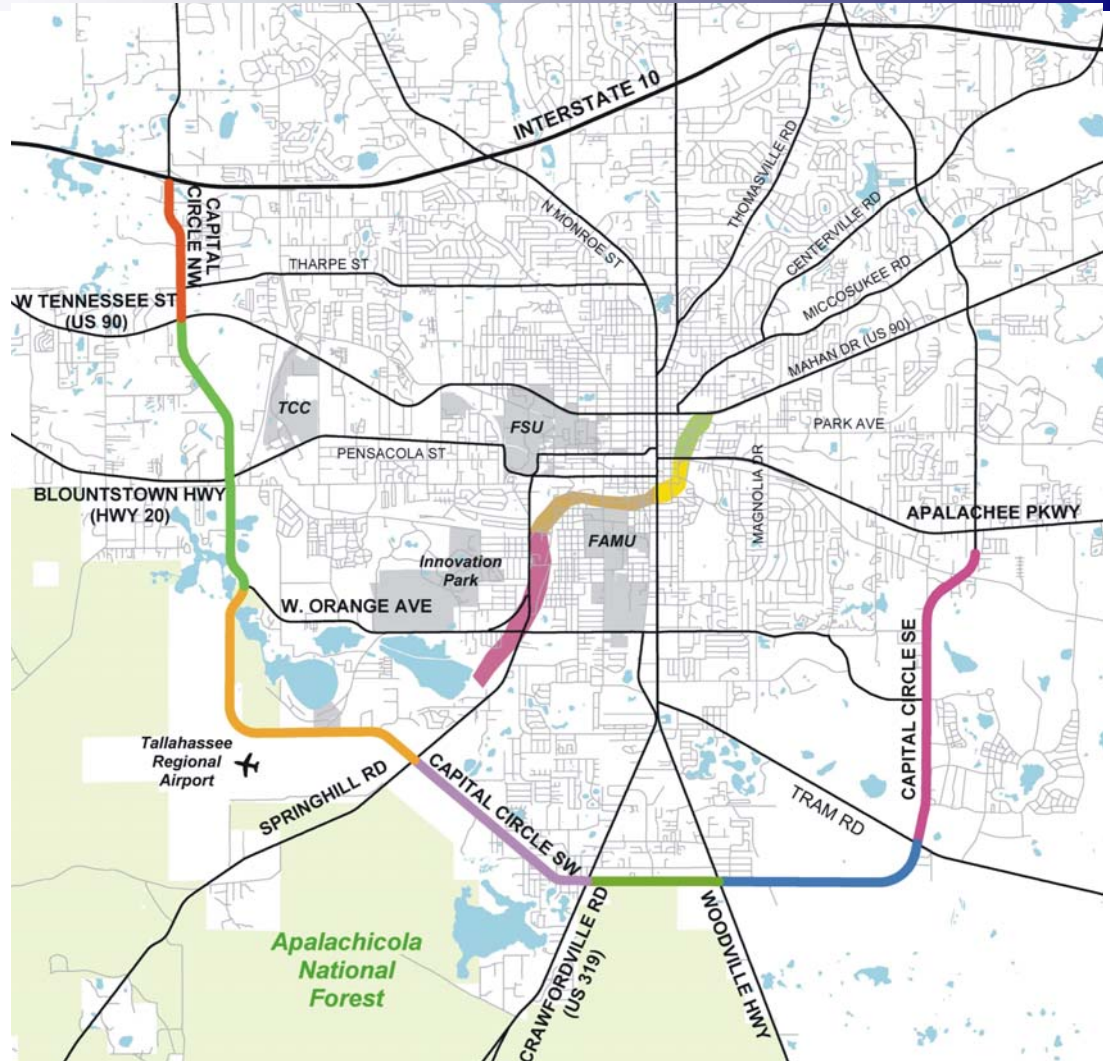


November, 2005



**BLUEPRINT 2000 & BEYOND**

1311 Executive Center Drive, Suite 109  
Koger Center, Ellis Building  
Tallahassee, Florida 32301

---

## TABLE OF CONTENTS

### I. Monthly Progress Reports

	<u>Page</u>
A. GEC Progress Report	1
B. Public Involvement	5
C. C0 - Capital Cascade Trail	7
D. E1 - Capital Circle Southeast (Tram to Connie)	12
E. E2 - Capital Circle Southeast (Woodville to Tram)	18
F. E2DB - Capital Circle Southeast (Woodville to Tram)	20
G. E3 - Capital Circle Southeast (Woodville to Crawfordville)	21
H. N1 - Capital Circle Northwest (US 90 to I-10)	23
I. N2 - Capital Circle Northwest/Southwest (US 90 to SR 20)	25
J. W1 - Capital Circle Southwest (Springhill to SR 20)	30
K. Other - Sensitive Lands Acquisition	32

## **GEC – GENERAL ENGINEERING CONSULTANT**

### **Project Description:**

General Engineering Consultant Contract for the Blueprint Intergovernmental Agency. THE LPA GROUP INCORPORATED is the Prime Consultant with Jacobs Civil, Incorporated as the major subconsultant. Twelve additional subconsultants, seven of which are MBE firms, make up the LPA/Jacob Blueprint GEC Management Team.

### **Key Personnel:**

Program Manager:	Jerry Oshesky - The LPA Group
Engineering Manager:	Bill Little - Jacobs

### **Contract Cost & Schedule Status – Contract 597**

Original Contract Amount:	\$ 2,341,236.00
Fiscal Year Re-Authorization:	\$ 4,222,374.00
Executed Supplemental Agreements:	\$ 0.00
Pending Supplemental Agreements:	\$ 0.00
Current Contract Amount:	\$ 6,563,610.00
Invoiced to Date:	\$ 3,933,383.58
Remaining Contract Amount:	\$ 2,630,226.42
Percent of Contract Amount Complete:	59.9%

**GEC – GENERAL ENGINEERING CONSULTANT**

<b>Subconsultant Participation:</b>	<b>Contract Amt</b>	<b>% of GEC Contract</b>	<b>ETD</b>
Moore Bass Consulting <i>Stormwater &amp; Landscaping</i>	\$ 75,677.00	1.15	\$ 36,820.93
Pope Environmental <i>Environmental Services</i>	\$ 140,343.00	2.14	\$ 87,910.00
OLH International <i>Program Controls</i>	\$ 986,528.00	15.03	\$ 783,569.53
Katherine Beck Consulting <i>Government Relations</i>	\$ 25,000.00	0.38	\$ 13,841.70
Quest Corporation of America <i>Public Involvement</i>	\$ 267,959.00	4.08	\$ 152,522.90
Uzzell Advertising <i>Public Relations, Web Maint.</i>	\$ 132,405.00	2.02	\$ 114,303.60
Welch & Ward Architects <i>Architecture, Recreation Facilities</i>	\$ 8,000.00	0.12	\$ 0.00
THC Right-of-Way Services, Inc. <i>R/W appraisal and acquisition</i>	\$ 711,320.00	10.84	\$ 415,568.20
Berryman & Henigar <i>Survey and mapping</i>	\$ 93,055.00	1.42	\$ 44,795.34
Weigel - Veasey <i>Property Appraisal</i>	\$ 37,848.00	0.58	\$ 0.00
Williams Earth Sciences <i>Geotechnical Services</i>	\$ 28,024.00	0.43	\$ 4,286.78
Allen Nobles & Associates <i>Survey</i>	\$ 70,000.00	1.07	\$ 73,726.00
THE LPA GROUP (PRIME) <i>Prime Consultant</i>	\$ 2,123,008.00	32.35	\$ 1,280,360.35
JACOBS (PRIME SUB) <i>Prime Subconsultant</i>	\$ 1,864,443.00	28.41	\$ 925,278.95
<b>Total:</b>	<b>\$ 6,563,610.00</b>	<b>100.00%</b>	<b>\$ 3,932,984.28</b>
<b>Total MBE Participation:</b>	<b>\$ 1,635,912.00</b>	<b>24.92%</b>	
<b>MBE Participation Expended to Date:</b>		<b>30.23%</b>	<b>\$ 1,188,968.66</b>
<b>MBE Goal to Date:</b>		<b>18.11%</b>	

## **GEC – GENERAL ENGINEERING CONSULTANT**

### **Project Status:**

Second Bi-Annual GEC Progress Report Completed (9/05)  
FY06 Authorizations Completed (9/05)

### **Activities Since Last Period:**

1. Continued Coordination for E1-CCSE (E1) Permitting
2. Participated in E1-CCSE Coordination Mtg. w/COT Electric
3. Coordinated w/FDOT for JPA's (E2, E3, N2, W1)
4. Regular Meetings with E1-CCSE Contractor
5. Met with FDOT Production Director
6. Continued Coordination for E2 DB
7. Blueprint Presentation to FES (10/20)
8. Attended CUTR Annual Awards Dinner
9. Participated in FDOT District Three (Chipley) Regular Progress Meeting

### **Planned Activities for Next Period:**

1. Coordination with SouthWood, COT Electric for E1-CCSE
2. Preparation for pending TCC, CAC, IA Meetings
3. Continued assistance with N1-CCNW and Groundbreaking
4. Continued active coordination with FDOT (including JPA TBD)
5. Implement Strategies for Blueprint Fund Leveraging
6. Coordinate with SouthWood for future funding opportunities (E2)
7. Coordination for Revised IT Implementation

### **Significant Issues and Resolutions:**

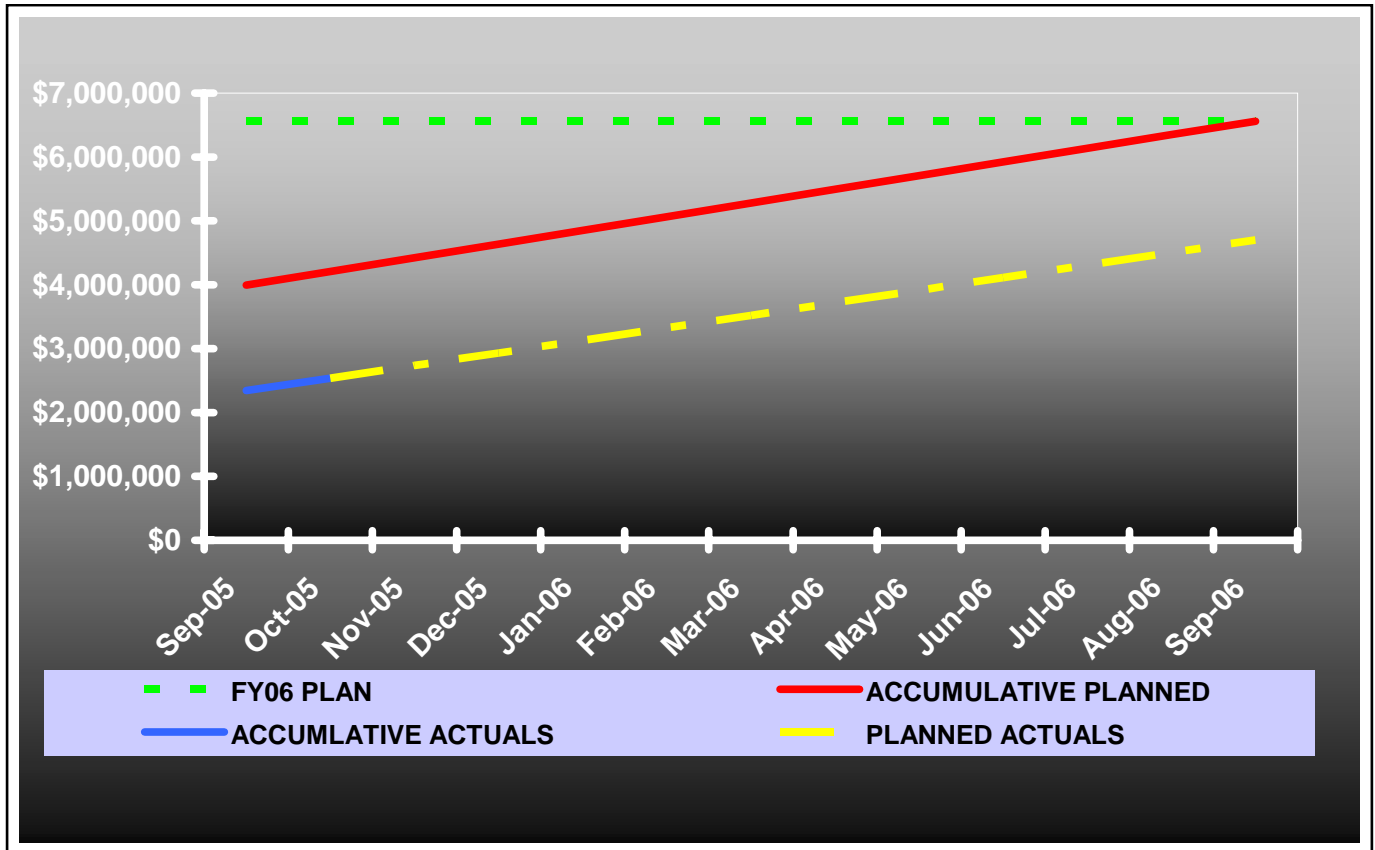
#### ISSUE

E1-CCSE Stormwater Facilities Master Plan

#### RESOLUTION

Continued monitoring with COT Growth and Environmental Office

**GEC Contract Financial Summary of Planned Vs. Actual Costs – FISCAL YEAR 2006**





## GEC – PUBLIC INVOLVEMENT

### Personnel:

<b>Blueprint 2000:</b>	<b>Public Involvement Manager:</b>	Bonnie Pfuntner, The LPA Group
	<b>Public Information Officer:</b>	Carlana Hoffman, QCA
	<b>Public Information Officer:</b>	Susan Emmanuel, QCA

### Activities Since Last Period:

1. Presentation for FES Luncheon (10/20)
2. Scheduling and Coordination for E2-CCSE Design-Build and CEI ads and selection
3. Coordination meeting with Tommie Speights in Chipley for CCNW (10/21)
4. N1-CCNW Ground Breaking/Press Conf invitations mailed (11/6), press release and site logistics
5. Participation on CAC Performance Audit Sub-committee
6. Submission of Article for Florida Transportation Magazine Dec. Issue (11/10)
7. Attended two E1-CCSE CEI Progress Meetings
8. Coordination with Dr. DeLoney regarding future driveway and parking within R/W on E1
9. Attendance at FL Transportation Commission Meeting (10/26)
10. Coordination and attendance for tour of Black Swamp with Com. Rackleff (11/1)
11. Notable increase in website email inquiries, responses and documentation
12. Notable time spent resolving email problems due to migration of email to new server
13. Notification and participation at CCNW/SW open house (11/10)
14. Assistance in development of graphical exhibits of CCNW/SW alignments for briefings
15. Development and submission of presentation for Public Land Acquisition & Management Partnership Conference Session (11/17)
16. Coordination for Interviews with WCOT, WCTV, FAMU TV and Tall. Democrat
17. Documentation and education of MBE participation on Blueprint projects
18. CCT Stakeholder notification of public meeting for design phase (email sent 10/31)
19. Responses to numerous public records requests
20. Attendance at CCT Clean-up groundbreaking (11/10)



*Tour of Black Swamp area with Com. Rackleff,  
Jim Shepherd and Kevin Pope* Page 5

---

## **GEC – PUBLIC INVOLVEMENT**

### **Planned Activities for Next Period:**

1. Coordination for N1-CCNW Ground Breaking/Press Conf (11/21)
2. Coordination and notification of N2-CCNW/SW Public Hearing (2/06)
3. Scheduling and Coordination for E2-CCSE Design-Build and CEI ads and selection
4. Preparation assistance for special session IA meeting (12/15)
5. Scheduling and Coordination for E2-CCSE Public Meeting at 60% plans stage (2/06)
6. Scheduling and Coordination for C1-CCT Design Phase Public Meeting (2/06)
7. Scheduling and Coordination for FCT Check Award Ceremony at 12/15 IA.

### **Significant Issues and Resolutions:**

#### ISSUE

Continued email blocks and routing problems at [info@blueprint2000.org](mailto:info@blueprint2000.org) and [pfuntneb@blueprint2000.org](mailto:pfuntneb@blueprint2000.org)



## C0 - CAPITAL CASCADES TRAIL - Master Plan

### Project Description:

This six mile long project area is commonly referred to as Capital Cascade Trail. It is Blueprint 2000 Map Area 3, a corridor along the St. Augustine Branch (SAB) from Tennessee Street to the SABs confluence with the Central Drainage Ditch (CDD) and then downstream along the CDD to its confluence with Munson Slough.

### Project Personnel:

<b>Blueprint 2000:</b>	<b>Planning Manager:</b>	David Bright
	<b>Project Manager:</b>	Ed Ringe/Gary Phillips
<b>Genesis:</b>	<b>Project Manager:</b>	Mark Llewellyn

### Contract Cost & Schedule Status - Agreement No. 533/Authorization 1 - As of 11/8/2005

Contract Commencement:	08Oct03
Contract Completion:	08Apr05
Percent of Work Performed:	90.0%
Original Contract Amount:	\$ 1,399,282.35
Executed Supplemental Agreements:	\$ 133,639.38
Pending Supplemental Agreements:	\$ 0.00
Current Contract Amount:	\$ 1,532,921.73
Invoiced to Date:	\$ 1,479,323.35
Remaining Contract Amount:	\$ 53,598.38
Percent of Contract Amount Complete:	96.5%
Original Contract Time:	548 Days
Contract Time Extensions:	266 Days
Current Contract Time:	814 Days
Contract Time Expended:	762 Days
Contract Time Remaining:	52 Days
Percent Contract Time Expended:	93.6%

### Schedule Milestones:

Complete Draft Storm Water Master Plan	31Jul05
Finalize Stormwater Master Plan for TCC, CAC and IA action	19Sep05
Complete Final project report & Tech Appendix	30Sep05
Complete Draft Storm Water Master Plan:	31Jul05
Finalize Stormwater Master Plan for TCC, CAC and IA action	19Sep05
Complete Final Project Report & Tech Appendix	30Nov05

**C0 - CAPITAL CASCADES TRAIL - Master Plan**

Design Subconsultant Participation:	Contract Amt	% of Design Contract	ETD
<b>EGS</b>			
<i>Environmental</i>	\$ 84,885.47	5.54	\$ 84,885.47
<b>Moore Bass</b>			
<i>Landscape Architecture</i>	\$ 115,008.00	7.50	\$ 110,639.49
<b>Archaeological Consultants Inc.</b>			
<i>Historic and Archaeological</i>	\$ 27,162.95	1.77	\$ 27,162.95
<b>CDM</b>			
<i>Stormwater</i>	\$ 235,598.00	15.37	\$ 232,699.21
<b>Biological Research Associates</b>			
<i>Natural Features Inventory</i>	\$ 24,340.00	1.59	\$ 18,646.12
<b>Greenways, Inc.</b>			
<i>Park Programming</i>	\$ 19,455.00	1.27	\$ 12,655.19
<b>Jennings Environmental</b>			
<i>Stream Morphology</i>	\$ 9,700.00	0.63	\$ 9,635.60
<b>GENESIS GROUP (PRIME)</b>			
<i>Prime Consultant</i>	\$ 1,016,772.32	66.33	\$ 982,999.32

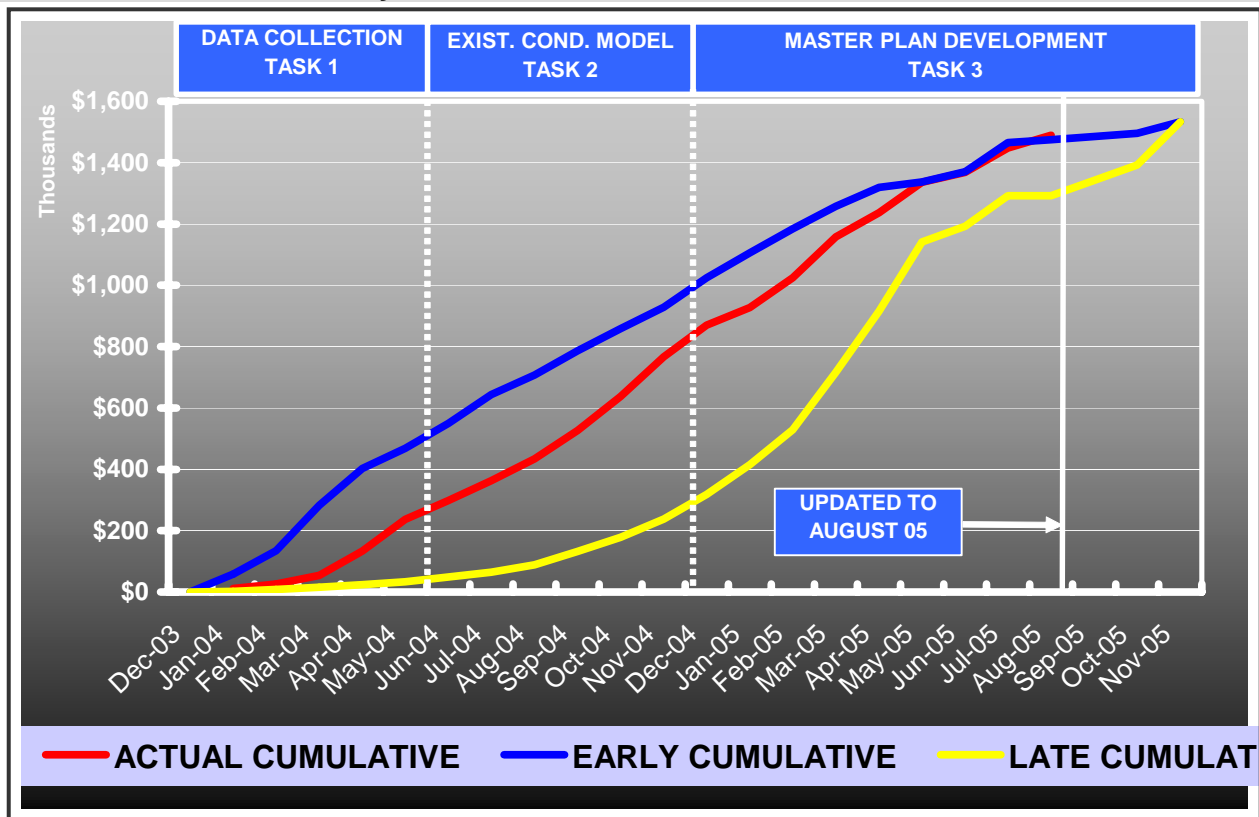
Total: \$ 1,532,921.74    100.00%    \$ 1,479,323.35

Total MBE Participation: \$ 227,056.42    14.81%

MBE Participation Expended to Date:    15.05%    \$ 222,687.91

MBE Goal to Date:    14.53%

**Contract Financial Summary of Planned Vs. Actual Costs with Time Extension**



## **C0 - CAPITAL CASCADES TRAIL - Master Plan**

### **Project Status:**

Project is in Phase 1, Master Plan Development. There are five tasks identified on the scope.

Task 1 - Data Collection	100% Complete
Task 2 - Existing Stream Hydraulics Analysis	100% Complete
Task 3 - Comprehensive Corridor Master Plan	100% Complete
Task 4 - Public Information Program	100% Complete
Task 5 - Documentation	98% Complete

Phase 2, Tasks to be scoped and assigned as determined. Not established.

### **Activities Since Last Period:**

1. Preparing Scope of Services for Phase 2 Design and Permitting.
2. Preparing Scope of Services for Master Plan Expansion activities.
3. Met with COT and their Consultant twice last month (10/12 and 10/20) to coordinate the Remediation Project Design and Construction activities with Blueprint's CCT Segment 2 Design and Construction.
4. Received DMS, FDOT and FFCC agreement with Parking Design concepts. Blueprint is now pursuing easement approval from DEP.
5. Coordinated with DEP and ACOE on Wetland Inventory and permitting affects of Jurisdictional Severance.
6. Met and sent letter to Ms. Althemese Barnes on October 25 of the Riley House expressing Blueprint's desire to have her participate in Design Phase workshops and project discussions. Ms. Barnes agreed to participate in the Design Phase Workshops/Charettes and will bring a wealth of information about the African American community formally located in the Cascade area and ideas to integrate that history into the trail design.
7. Contacted Linda Deaton – Curator of Collections and Exhibits for Tallahassee Museum to discuss status of Cascade Exhibition. Currently completing research and text/script and design. Parts of this Exhibition may be completed by next spring, which could be used to facilitate historic discussions during design workshops.
8. Drafted e-mail to stakeholders letting them know the Design Phase Workshops for Phase 2, Segment 2 will be utilized to continue discussions about all project segments.
9. Responded to numerous requests for information from public citizens

### **Planned Activities for Next Period:**

1. Prepare for IA Meeting in December
  - a. Prepare Agenda Item for Segment 2 Design Phase
  - b. Prepare Agenda Item for Coordination of Remediation Design and Construction
2. Finalize Technical Reports 2 and 3
3. Finalize Phase 2 Scope of Services
4. Finalize Master Plan Expansion Activities Scope of Services
5. Continue Coordination on Segment 2
  - a. Maintain close coordination with the City on Remediation Project
  - b. Pursue easement approval from DEP for Parcels C, D and E
  - c. Follow up with CSX regarding the Engineering Agreement
6. Conduct field review with FDEP and ACOE regarding jurisdiction severance
7. Begin staff-hour and fee review for Phase 2.

## **C0 - CAPITAL CASCADES TRAIL - Master Plan**

### **Significant Issues and Resolutions:**

#### ISSUE

Segment 2 Coordination with Remediation Project

#### RESOLUTION

Blueprint to work with COT and Remediation Consultant/Contractor (WRS) to incorporate the design and construction of the lower pond and channel slope stabilization south of Railroad Crossing into WRS Contract. COT will advance fund work and then seek reimbursement from Blueprint sometime in FY 2008.

#### ISSUE

FEMA Flood Map Amendment for the Existing Conditions (Segments 1, 2 and 3).

#### RESOLUTION

Finalize the Scope of Work (Blueprint and City). Proceed with the application and submittal process as soon as possible.

#### ISSUE

CSX Intermodal Coordination

#### RESOLUTION

Blueprint will follow-up with CSX Intermodal on developing design Engineering Agreement.

#### ISSUE

Jurisdictional Severance

#### RESOLUTION

Blueprint completed Wetland Identification and Assessment in project basins. DEP and ACOE to field review wetlands this month. Agencies will then provide guidance on favorability of jurisdictional severance application.

#### ISSUE

Scope of Services (Phase 2) : Discussion Item: Interim Improvements for Segment 1

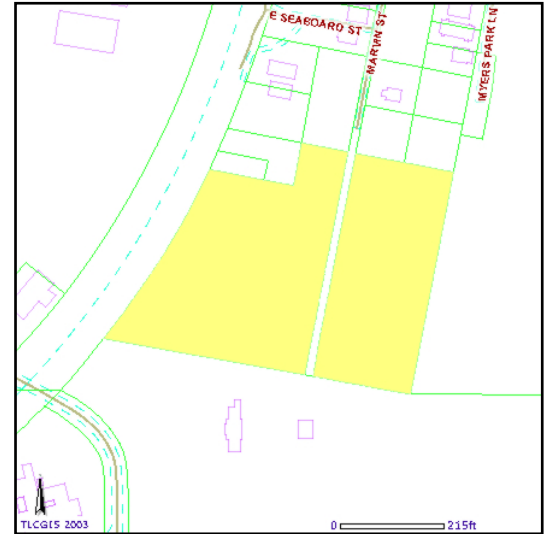
#### RESOLUTION

Blueprint is preparing Scope of Services for Phase 2 Segment 2 Design, Expansion of Master Plan Activities, and Myers Park SWMF. Drafts Scopes will be provided to the TCC for their review and comment in November.

## C0 - CAPITAL CASCADES TRAIL - Master Plan

### Right-Of-Way Status Report:

1. There are several parcels near Myers Park that Blueprint and TPL are attempting to purchase for stormwater retention. At present Greg Chelius with TPL has had discussions with the property owner and they indicated their willingness to sell property. Blueprint has had the property appraised and are working through TPL and the property owner in an attempt to purchase this property in the near future.



2. Blueprint purchased a residential property at 218 FAMU Way within our land banking program for Capital Cascade Trail. Blueprint was able to secure this property at the appraised value. Blueprint met with SHPO on August 12 to confirm the property and structure were not eligible for the NRHP and could be demolished as soon as possible due to health and safety concerns. SHPO agreed and we are currently working towards securing a consultant to manage the demolition of this house.



## E1 - CAPITAL CIRCLE SE – Tram Road to Connie Drive

### Project Description:

The proposed 3.44-mile project along Capital Circle Southeast (US 319/SR261) extends from south of Tram Road to Connie Drive (milepost 1.931 and 5.371) in Leon County and includes expanding the existing two-lane undivided rural roadway to a six-lane divided urban (curb and gutter) facility. The purpose of the roadway improvement project is to increase the capacity and safety of the existing highway. New traffic signals, including ITS features, will be provided at six intersections: Tram Road, Shumard Oak Boulevard, Merchants Row Drive, Blair Stone Road, Orange Avenue and Old St. Augustine Road. The project also includes significant landscaping as well as pedestrian, bicycle and recreational amenities.

### Project Personnel:

<b>Blueprint 2000:</b>	<b>Engineering Manager:</b>	Bill Little
	<b>Project Manager:</b>	Marek Romanowski
	<b>Construction Manager:</b>	Garrett Martin
<b>PBS&amp;J:</b>	<b>Project Manager:</b>	David Freni

### Contract Cost & Schedule Status:

Contract Commencement:	10Jan05
Contract Completion:	10Jan08
Percent of Work Performed:	20.8%

Original Contract Amount:	\$ 30,796,339.34
Executed Supplemental Agreements:	\$ 5,398,808.55
Pending Supplemental Agreements:	\$ 58,215.49
Current Contract Amount:	\$ 36,195,147.89
Invoiced to Date:	\$ 8,236,247.11
Remaining Contract Amount:	\$ 27,958,900.78
Percent of Contract Amount Complete:	22.8%

Original Contract Time:	1095 Days
Contract Time Extensions:	11 Days
Current Contract Time:	1106 Days
Contract Time Expended:	295 Days
Contract Time Remaining:	811 Days
Percent Contract Time Expended:	26.7%

### Schedule Milestones:

Intergovernmental Agency (IA) Approval	20Sep04
Execute Contract	22Dec04
Notice to Proceed	10Jan05
Right of Way Acquisition, Phase 1	01May05
Right of Way Acquisition, Phase 2	01Sep06
60% Design Submission – Segment I	28Feb05
90% Design Submission – Segment II	15Apr05
90% Design Submission– Segment III	12May05
90% Design Submission– Segment IV	08Aug05
Final Design Submission – Segment II	09May05
Final Design Submission– Segment I, III	24Jun05
Final Design Submission– Segment IV	20Sep05
Contract Completion	08Jan08

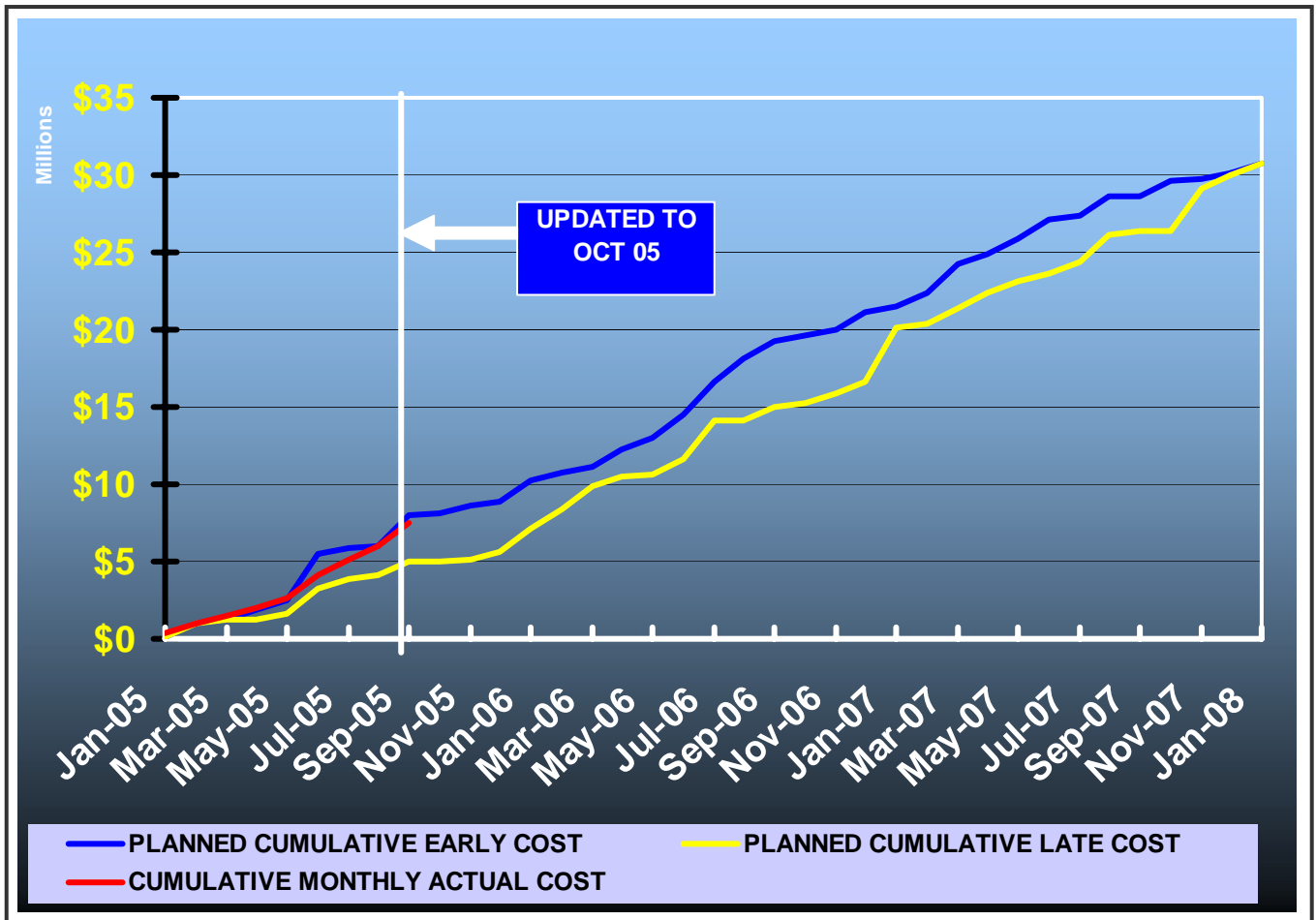






**E1 - CAPITAL CIRCLE SE – Tram Road to Connie Drive**

**DB Team Financial Summary of Planned Vs. Actual Costs**



## **E1 - CAPITAL CIRCLE SE – Tram Road to Connie Drive**

### **Project Status:**

Erosion Control and Clearing and Grubbing work is complete from Tram Road to Merchants Row Boulevard. EMP Conditional permit for Segment 2 has been granted by COT Growth Management on 10/31/05. Road construction between Tram Road and Merchants Row Boulevard has been started, as per EMP permit conditions. Segment 4 90% plans complete have been reviewed by Blueprint and are currently being reviewed by Public Works. Segments 3 design is 90% complete plans have been reviewed by Blueprint and are being reviewed by PW. Segment 4 90% plans have been completed and reviewed by Blueprint. Conditional permit to place fill on Segments 2 and 3 has been granted by COT. Fill permit has been granted by DEP for Segment 2 while Segment 3 is being processed. Clearing and grubbing and installation of erosion control measures on Segment 2 are complete. Placing of fill on Segment 2 has commenced. Work on COT Water Utility 30" Sanitary Bypass (WP 1) has been completed. Work on COT Water Utility potable water, re-use water and gravity sewer lines installation and relocation is in progress. Drainage pipe is being placed south of Pond 3 as well as north of Pond 4.

### **Activities Since Last Period:**

1. The DB Team has submitted 90% complete plans for Seg. 4. The plans were reviewed by BP2K and are presently being reviewed by COT and Leon County.
2. The DB Team has submitted 90 % complete plans for Seg. 3 and 1. The plans have been reviewed by BP2K and are being reviewed by Public Works.
3. EMP Conditional permit has been granted by COT GM. Construction zone is limited to section between Tram Road and Merchants Row Blvd.
4. The DB Team obtained fill permit for Seg. 2 and 3 from COT and DEP.
5. BP2K and the DB Team coordinated with COT Electric regarding guy wires adjustment at corner pole of transmission line north of Monday Street.
6. DB Team updated EMP permit application for Seg. 4 (ready to submit after plans release by PW).
7. Completed construction of the 30" wastewater bypass at Riggins Road.

### **Planned Activities for Next Period:**

1. Conduct design progress meeting and CEI meeting.
2. Continue working towards 100% plans on Seg. 1, 3 and 4.
3. Submit EMP permit application for Seg. 4.
4. Coordinate utility permits with COT Streets and Drainage for Seg. 1, 3 and 4

### **Construction Update:**

1. Hauling and compacting of embankment material
2. Pipe placement in front of Pond 3 and 4
3. Clearing and grubbing is being done on east side of exist. Roadway
4. DRB board Mtg. 11/14/05, only issue relates to SFMP

## E1 - CAPITAL CIRCLE SE – Tram Road to Connie Drive

### Significant Issues and Resolutions:

ISSUE

1. Right-of-way and easement issues with COT Electric Utility.
2. Permitting.

RESOLUTION

1. In process with COT
2. Received approval of design and mitigation measures for Canopy Road at intersection of Old St. Augustine Road and CCSE.

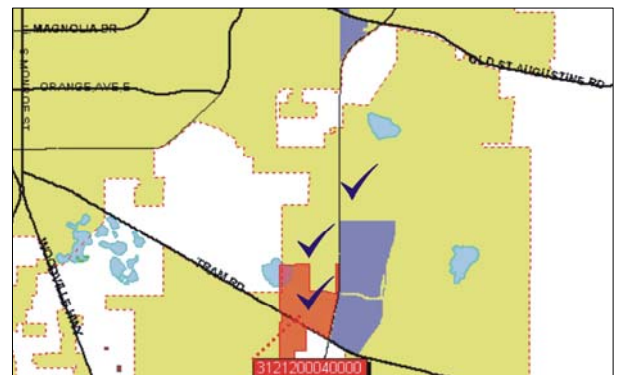
### Right-Of-Way Status Report: as of 11/9/05

NEGOTIATING	4
SECURED THROUGH OT	13
DONATION (ST. JOE, STATE LANDS & CITY)	14
AGEEMENT SECURED BUT NOT CLOSED	4
SECURED THROUGH NEGOTIATED SETTLEMENT	25
TOTAL PARCELS ON PROJECT	60

1. There are 13 parcels at Tram Road and Capital Circle SE requiring right of way acquisition and/or relocation services. Blueprint has completed the appraisals and made offers. .At the present time, we are negotiating with property owners for the purchase of the necessary right of way. In addition, the relocation process is also underway.

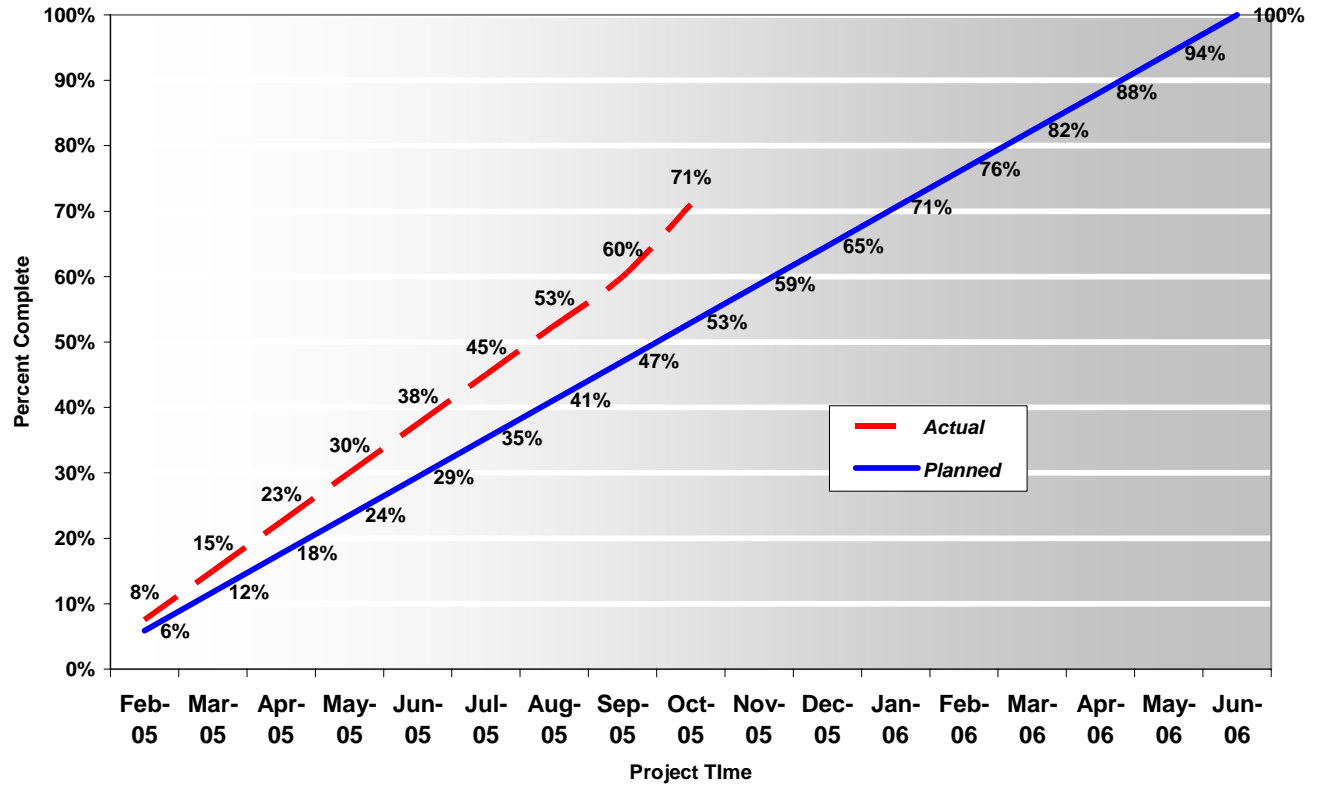


2. In addition to the right of way acquired by the City of Tallahassee, the SouthWood Property being donated within the JPA, and the parcels at Tram Road, there were also several tracts of land and right of way needed from the State of Florida. These state lands were secured in April. The SouthWood property was transferred to the City on May 16, 2005.



**E1 - CAPITAL CIRCLE SE – Tram Road to Connie Drive**

Right-of-Way Aquisition Effort



## E2 - CAPITAL CIRCLE SE – Woodville Highway to Tram Road

### Project Description:

This project is on a fast track to reach 60% design complete by Feb. 2006. Due to the fast track there are significant activities planned and ongoing. The Consultant (DRMP) "hit the ground running" when issued the notice to proceed. Four survey crews are performing data collection to get all location data gathered as quickly as possible. The list of planned activities indicates the level of activity occurring.

### Project Personnel:

<b>Blueprint 2000:</b>	<b>Engineering Manager:</b>	Bill Little
	<b>Project Manager:</b>	Doug Martin
<b>DRMP:</b>	<b>Project Manager:</b>	John Burkett
	<b>Assistant PM:</b>	Bryant King

### Contract Cost & Schedule Status - Agreement No. 1098

Contract Commencement:	20Sep05
Contract Completion:	01Sep07
Percent of Work Performed:	4.9%
Original Contract Amount:	\$ 912,692.13
Executed Supplemental Agreements:	\$ 0.00
Pending Supplemental Agreements:	\$ 0.00
Current Contract Amount:	\$ 912,692.13
Invoiced to Date:	\$ 44,601.87
Remaining Contract Amount:	\$ 868,090.26
Percent of Contract Amount Complete:	4.9%
Original Contract Time:	711 Days
Contract Time Extensions:	0 Days
Current Contract Time:	711 Days
Contract Time Expended:	56 Days
Contract Time Remaining:	655 Days
Percent Contract Time Expended:	7.88%

## E2 - CAPITAL CIRCLE SE – Woodville Highway to Tram Road

Design Subconsultant Participation:	Contract Amt	% of Design Contract	ETD
PBS&J <i>Utilities</i>	\$ 17,679.39	1.94	\$ 0.00
EGS <i>Geotechnical</i>	\$ 101,211.21	11.09	\$ 0.00
Poole <i>Surveying</i>	\$ 75,645.96	8.29	\$ 0.00
DRMP (PRIME) <i>Prime Consultant</i>	\$ 718,155.57	78.69	\$ 44,601.87
Total:	\$ 912,692.13	100.00%	\$ 44,601.87
Total MBE Participation:	\$ 176,857.17	19.38%	
MBE Participation Expended to Date:		0.00%	\$ 0.00
MBE Goal to Date:		0.00%	

### Project Status:

PCN Completed  
 Design Survey Underway - Mainline to be completed 11/05  
 ROW Survey Underway  
 Geotechnical Exploration Underway  
 Finalizing Pond Site Alternatives (See Issues Slide)  
 Working towards Phase I Design Submittal

### Activities Since Last Period:

1. Received and evaluated an updated project schedule
2. Received Typical section plans
3. Received QA plans
4. Had early coordination meeting with Growth Management
5. Having weekly early coordination meetings with SouthWood.

### Planned Activities for Next Period:

1. Pre-30% plans meeting
2. 30% Plans delivery
3. Early coordination meeting with Public Works

### Significant Issues and Resolutions:

#### ISSUE

The critical design time required dictates that the design concept regarding the stormwater control via linear ponds or offsite ponds must be determined ASAP.

#### RESOLUTION

Completed. Decision to use off-site ponds has been made.

#### ISSUE

Potential agreement with St. Joe for several pond sites

#### RESOLUTION

Continue to advance discussions with St. Joe and identify agreement terms  
 Meet with Growth Management, Public Works to identify permitting constraints early

---

## **E2DB - CCSE Woodville Highway to Tram (Design Build)**

### **Project Description:**

This is the continuation of the E2 design project which will be completed at 60% without the design criteria package. The design criteria package is being developed in-house by the Blueprint2000 and GEC staff.

### **Project Personnel:**

Project Manager	Marek Romanowski
CEI Project Manager	Garrett Martin

### **Project Status:**

- Design Build advertisement was released on Sunday November 6, 2005.
- CEI to be advertised separately in January of 2006.

### **Activities Since Last Period:**

1. Design Build advertised

### **Planned Activities for Next Period:**

1. LOI's due 11/28/2005
2. Shortlist December 14, 2005
3. Release RFP December 15, 2005
4. Pre-proposal Conference February 7, 2006
5. Proposals due March 24, 2006
6. Score and select Contractor May 4, 2006
7. Planned Contract execution by June 30, 2006



## **E3 - CAPITAL CIRCLE S – Woodville Hwy to Crawfordville Rd**

### **Project Description:**

This project proposes to widen approximately 1.13 miles of the existing two-lane Capital Circle South from Woodville Highway to Crawfordville Road to an ultimate six-lane facility,

FDOT Roadway ID: 55002000 SR 263 from MP 0.200 to MP 1.330

### **Project Personnel:**

<b>Blueprint 2000:</b>	<b>Engineering Manager:</b>	Bill Little
	<b>Project Manager:</b>	Gary Phillips
<b>URS Corporation:</b>	<b>Project Manager:</b>	Masoud Foroughi

### **Contract Cost & Schedule Status:**

Blueprint 2000 staff is performing current activities.

### **Schedule Milestones:**

Advertise for Design Consultant	(Completed)	29May05
Letter of Interest (LOI) Due	(Completed)	21Jun05
Shortlist Firms	(Completed)	01Jul05
Issue Request for Proposals	(Completed)	08Jul05
Pre-proposal Conference	(Completed)	14Jul05
Written Proposals Due	(Completed)	29Jul05
Finalize Review of Written Proposals	(Completed)	16Aug05
Oral Presentations	(Completed)	16Aug05
Selection of Design Consultant	(Completed)	16Aug05
IA Authorizes Blueprint Staff to Negotiate and Execute Contract with Design Consultant	(Completed)	19Sep05
Execute Contract	(Completed)	Nov05

### **Activities Since Last Period:**

1. Reviewed Community Awareness Plan staff-hour estimate
2. Revised Scope to accommodate potential for design/build scenario after 60% submittal

### **Planned Activities for Next Period:**

1. Receive Final Fee Proposal
2. Complete and Execute Contract
3. Issue LOA#1 and Notice to Proceed.

### **Significant Issues and Resolutions:**

ISSUE

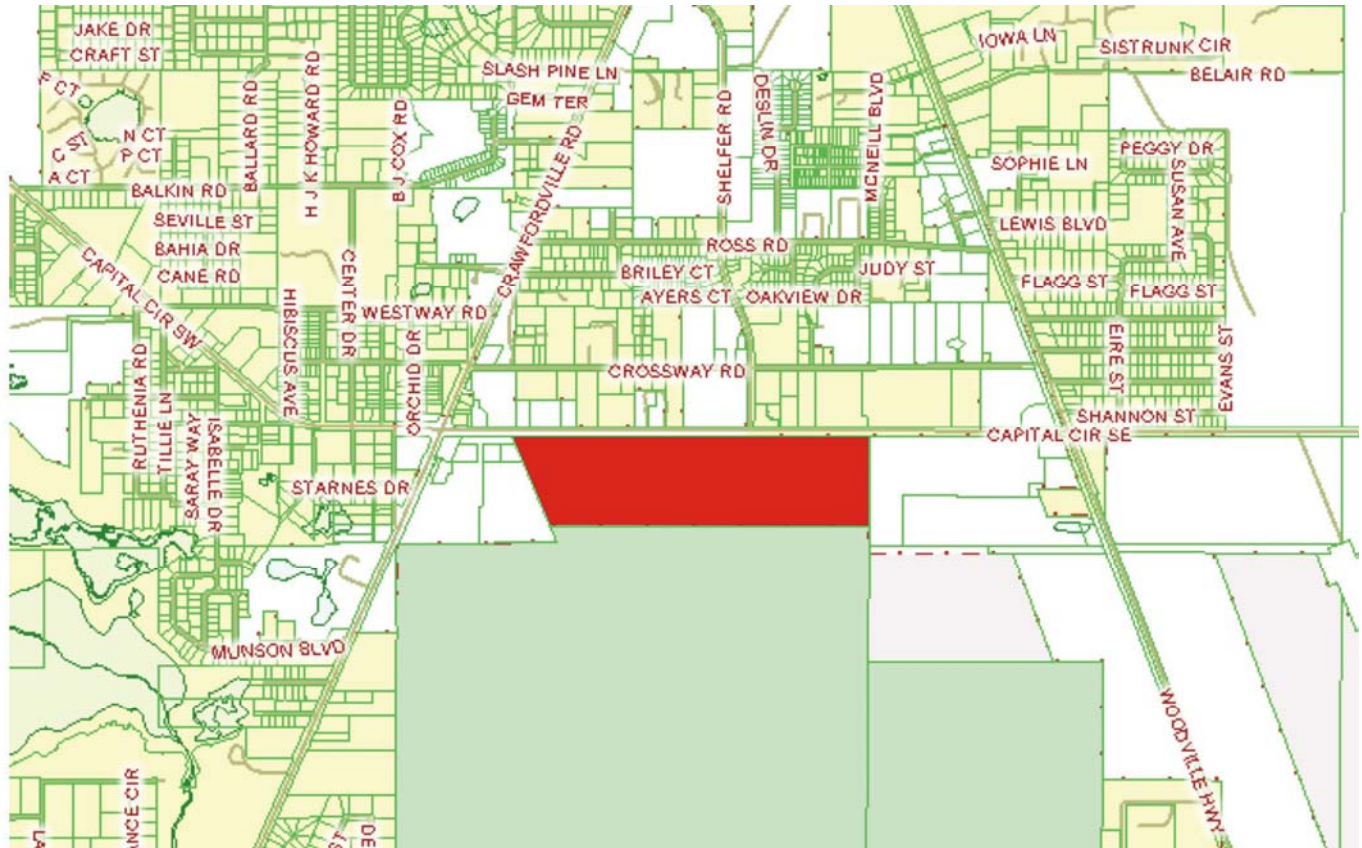
None at this time.

RESOLUTION

None at this time.

## E3 - CAPITAL CIRCLE S – Woodville Hwy to Crawfordville Rd

### Right-Of-Way Status Report:



The Flea Market Tract owned by the United States Forest Service- Blueprint is currently working with the USFS to secure this 100 Acre parcel on Capital Circle between Woodville and Crawfordville Hwy. At this time, Blueprint is having discussions with the Forrest Service to facilitate a possible land swap with this property and other properties that the USFS desires. Blueprint is having appraisals completed to determine the value of this tract and those that the USFS desires to swap. We are in the early stages of discussions and much work is still ahead for both Blueprint and the USFS.

## N1 - CAPITAL CIRCLE NW – I-10 to US 90

### Project Description:

The proposed 1.991-mile roadway project (FPID: 219722-1) consists of upgrading the existing undivided rural facility to a six-lane divided urban (curb and gutter) facility. Upgrades to the West Tennessee, Tharpe, Hartsfield and Commonwealth intersections will also be included. The purpose of the roadway improvement project is to increase the capacity and safety of the existing highway. The roadway project will be designed, let and constructed by the Florida Department of Transportation, with advance funding provided by the Blueprint 2000 Intergovernmental Agency.

### Project Personnel:

<b>Blueprint 2000:</b>	<b>Project Manager:</b>	Garrett Martin
<b>FDOT Design:</b>	<b>Project Manager:</b>	Brian Little
<b>FDOT Construction:</b>	<b>Project Manager:</b>	William Stoutamire
<b>PBS&amp;J</b>	<b>CEI Project Administrator</b>	Jerry McClure
<b>PBS&amp;J</b>	<b>CEI Senior Project Engineer</b>	Steve Martin
<b>FDOT</b>	<b>Midway Operation Engineer</b>	Gabriella Corbin
<b>FDOT</b>	<b>Midway Assnt. Operations Eng.</b>	Greg Ouzts

### Contract Cost & Schedule Status:

825 Contract Days

The construction contract amount is for \$25,462,923.43 with M Inc.

The Project Design is being managed by FDOT.

### Schedule Milestones:

Complete 100% Plans	22Dec04
ROW, Permits and Utilities Clear	06Dec04
Plans to Tallahassee (final processing)	15Mar05
Select CEI Consultant	14Mar05
Letting Date	25Jun05
NTP Issued	14Sep05
Begin Construction	26Sep05

### Project Status:

Pond excavation for Regional Facility Pond 1 is in the middle of production. Much clearing and grubbing has been done. Many utilities are in the process of being adjusted and relocated. Right of Way stipulated final judgments need to be done to avoid unforeseen additional costs.



## N1 - CAPITAL CIRCLE NW – I-10 to US 90

### Activities Since Last Period:

1. Notice To Proceed given on 9/14/05.
2. Construction work began on 9/26/05.
3. Regional Pond Facility 1 under construction
4. Utilities being adjusted or relocated

### Planned Activities for Next Period:

1. Attendance by Blueprint staff at Progress and CEI Meetings.
2. Ongoing Coordination for Ground Breaking and Press Conference (11/21)

### Significant Issues and Resolutions:

ISSUE

Right of Way stipulated final judgments need to be done to avoid unforeseen additional costs.

RESOLUTION

### Right-Of-Way Status Report:

As of 11/9/05

CLOSED - (IN POSSESSION)	30
AGREEMENTS SECURED BUT NOT CLOSED	0
DONATION	4
ACQUIRED THROUGH CONDEMNATION	91
<b>TOTAL PARCELS ON PROJECT</b>	<b>125</b>

FDOT is currently updating the R/W Cost Estimate. It currently indicates the estimate to be \$45,000,000

**N2 - CAPITAL CIRCLE NW/SW – US 90 to SR 20**

**Project Description:**

The Expanded Project Development and Environment (PD&E) Study limits for this 2.9 mile project extend from Tennessee Street (US 90/SR 10) to Orange Avenue (SR 371). This project also includes the preparation of approximately 60% design plans, etc. from Tennessee Street to Orange Avenue.

**Project Personnel:**

**Blueprint 2000:**                      **Project Manager:**                      Jim Shepherd  
**H.W. Lochner:**                      **Project Manager:**                      Hugh Williams

**Contract Cost & Schedule Status - Agreement No. 772/Authorization 1 - As of 11/15/2005**

Contract Commencement:                      10May04  
 Contract Completion:                      10May07  
 Percent of Work Performed:                      42.5%

Original Contract Amount:                      \$     1,921,585.90  
 Executed Supplemental Agreements:                      \$     159,836.80  
 Pending Supplemental Agreements:                      \$             0.00  
 Current Contract Amount:                      \$     2,081,422.70  
 Invoiced to Date:                      \$     954,588.00  
 Remaining Contract Amount:                      \$     1,126,834.70  
 Percent of Contract Amount Complete:                      45.86%

Original Contract Time:                      1095 Days  
 Contract Time Extensions:                      0 Days  
 Current Contract Time:                      1095 Days  
 Contract Time Expended:                      554 Days  
 Contract Time Remaining:                      541 Days  
 Percent Contract Time Expended:                      50.6%

<b>Design Subconsultant Participation:</b>	<b>Contract Amt</b>	<b>% of Design Contract</b>	<b>ETD</b>
<i>Environmental Geotechnical Specialists</i> <i>Geotechnical</i>	\$ 126,831.57	6.09	\$ 56,931.18
<i>Diversified Design &amp; Drafting Services, Inc.</i> <i>Survey and R/W Mapping</i>	\$ 443,781.44	21.32	\$ 174,684.04
<i>Archaeological Consultants, Inc.</i> <i>Cultural Resource Assessment</i>	\$ 10,947.15	0.53	\$ 10,399.79
<i>HNTB/TEI</i> <i>Traffic Analysis</i>	\$ 80,310.59	3.86	\$ 78,704.38
<i>HW LOCHNER (PRIME)</i> <i>Prime Consultant</i>	\$ 1,324,350.17	63.63	\$ 547,894.09
<i>American Acquisition Group</i> <i>Right of Way</i>	\$ 95,201.78	4.57	\$ 85,974.52

Total: \$ 2,081,422.70     100.00%     \$ 954,588.00  
 Total MBE Participation: \$ 581,560.16     27.94%  
 MBE Participation Expended to Date: 25.35%     \$ 242,015.01  
 MBE Goal to Date: 11.63%



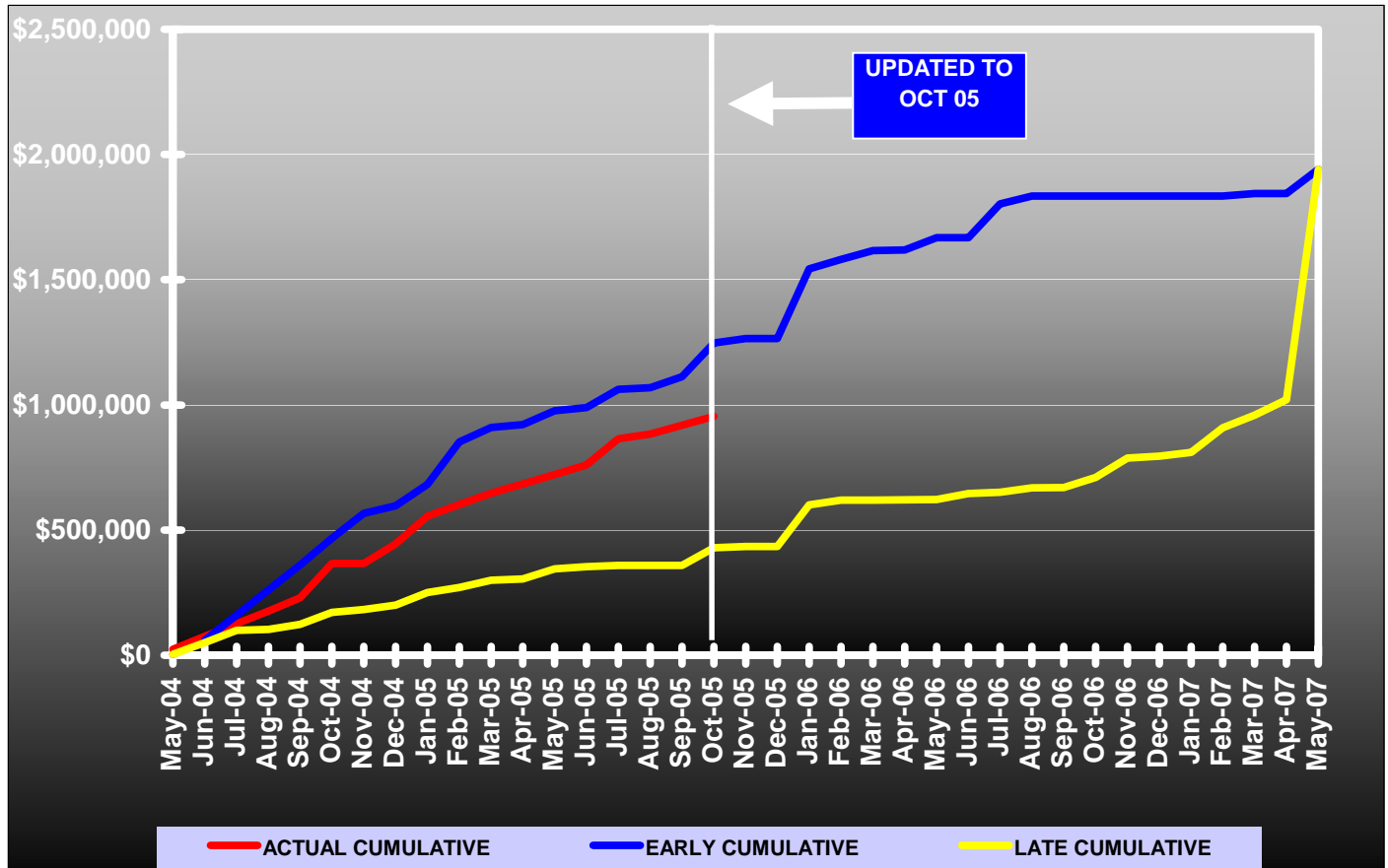
## N2 - CAPITAL CIRCLE NW/SW – US 90 to SR 20

### Schedule Milestones:

Kickoff Meeting	13Jul04
Draft Traffic Tech	01Nov04
Phase 1 Geotech	01Dec04
Final Traffic Tech	13Dec04
Water Quality Eval.	03Jan05
Draft Air Quality	24Jan05
Draft Loc. Hydraulics	21Feb05
Draft ESBA	21Feb05
Draft Contamination	21Feb05
Draft Noise Study	07Mar05
C. Stage Relocation	24Jan05
Roadway Concepts	07Feb05
Draft PER	07Feb05
Cultural Assessment	07Feb05
Draft Pond Siting	09Feb05
Draft Wetlands Eval.	21Feb05
ROW Control Map	01Feb05
Alt. Public Meeting	24May05
Natural Features	21Jul05
Final Pond Siting	09Sep05
Phase 2 Geotech	09Sep05
Public Hearing	16Sep05
Draft Cat Ex	10Oct05
Final Air Quality	10Oct05
Final Loc. Hydraulics	17Oct05
Final ESBA	17Oct05
Final Contamination	17Oct05
Final Wetlands Eval.	17Oct05
30% Roadway Plans	21Oct05
Draft Coordination Rpt.	24Oct05
Final Noise Study	14Nov05
Final Coordination Rpt.	21Nov05
Final PER to FHWA	22Nov05
Final Cat Ex	25Jan06
60% Roadway Plans	06Feb06
Bridge Dev. Report	10Feb06
Env. Impact Analysis	13Feb06
90% ROW Maps	13Feb06
Final ROW Maps	11Apr06

**N2 - CAPITAL CIRCLE NW/SW – US 90 to SR 20 EPD&E Study**

**Contract Financial Summary of Planned Vs. Actual Costs**



**Project Status:**

- Fine tuning alternative concepts
- Updating environmental and engineering analyses
- Updating environmental and engineering reports
- Surveying and other preliminary design activities
- Preparing for the Public Hearing

**Activities Since Last Period:**

1. Lochner recommended a preferred alternative from just south of Blountstown Hwy. to Tennessee St., and received Blueprint staff concurrence.
2. Continued topographic survey within these limits, and as a result of the above concurrence, will soon commence next phase of geotechnical activities, and other preliminary design activities.
3. Continued work on the revised SR 20 alternatives, including preparation of R/W cost estimates for the alternative alignments, and the assessment of other impacts.
4. Above information to be presented at the Nov. 10 Open House for the SR 20 and pond and mitigation site alternatives.



## **N2 - CAPITAL CIRCLE NW/SW – US 90 to SR 20 EPD&E Study**

### **Activities Since Last Period (continued):**

5. Continued updating the environmental and engineering reports based on review comments, and in areas where Blueprint staff is comfortable with the alignment.
6. Continued the structural analysis for bridges at CSX RR and Gum Swamp.
7. Revised and re-submitted the Gum Swamp 4(f) Determination of Applicability.
8. Continued to resolve issues regarding the potential 4(f) property at the Lake Bradford tract, near Orange Ave.
9. Assessing permit delegation to see if this is in best interest of the project.
10. Evaluate the Delta Park property for suitability for storm water management and mitigation.
11. Deleted the north frontage road due to proposed new development there. Continued coordination with Capital Hydraulics, R & L Carriers, and Wayne Frier Mobile Homes to develop access to these parcels.
12. Awaiting on-going coordination between Leon County School Board and Uncle Bob's Storage to resolve access and stormwater management issues.
13. Negotiations on SA #3 on hold, pending resolution of several issues.

### **Planned Activities for Next Period:**

1. Continue survey, commence next phase of geotechnical activities, and other preliminary design activities, from SR 20 to Tennessee St.
2. Continue updating the environmental and engineering reports based on review comments, and the selection of the preferred alternative.
3. Continue negotiations for SA #3 where possible.
4. Continue to resolve issues regarding the potential 4(f) property at the Lake Bradford tract, near Orange Ave. Then complete and submit the Determination of Applicability.
5. Complete the determination of the Delta Park property's suitability for storm water management and mitigation.
6. Continue coordination and resolution of access and storm water management issues related to Leon County School Board and Uncle Bob's, and Capital Hydraulics, etc.
7. Prepare for the Public Hearing, date to be determined.
8. Conduct final PAG meeting prior to the Public Hearing.

### **Significant Issues and Resolutions:**

#### ISSUE

Transition south of Orange Avenue.

#### RESOLUTION

Blueprint 2000 staff will ask direction from the IA at the December 15 meeting.

#### ISSUE

SR 20 typical section.

#### RESOLUTION

FDOT has requested that SR 20 in the vicinity of the Capital Circle intersection be constructed to accommodate the future expansion from four to six lanes. This requires approximately 155' of right-of-way.

## **N2 - CAPITAL CIRCLE NW/SW – US 90 to SR 20 EPD&E Study**

### **Significant Issues and Resolutions (continued):**

#### ISSUE

SR 20 alignment.

#### RESOLUTION

Analysis of three options (left, right and center alignments) was conducted. The right-of-way estimate for the left alignment is approximately \$3.37 Million, and the estimate for the right alignment is \$4.59 Million. Either the left or right alignment will require the relocation/acquisition of approximately 3 businesses. The staff recommendation is the center alignment (acquiring right-of-way from both sides of the existing road). The center alignment will avoid the relocation of any existing businesses. The right-of-way estimate for the center alignment is approximately \$3.56 Million.

#### ISSUE

Bridging of Gum Swamp.

#### RESOLUTION

Based on coordination with Leon County Growth Management, the proposed bridging of Gum Swamp and the corresponding wetland and floodplain mitigation requirements will be as follows:

1. A bridge (approximately 100 feet long) will be constructed at Gum Creek.
2. The roadway will be raised by approximately 1.5 feet to allow for a French Drain system to provide water quality treatment.
3. Culverts will be added to help equalize the water levels on both sides of Capital Circle in the swamp and to encourage small animals to cross (eco-passages).
4. Gravity Wall will be constructed to reduce the amount of fill in the Swamp and to funnel animals to the proposed culverts.
5. Blueprint 2000 will purchase property on the west side Capital Circle in Gum Swamp for wetland mitigation.
6. Blueprint 2000 will purchase property along Swamp Fox Road for wetland and floodplain mitigation. Blueprint 2000 may purchase property on the east side of Capital Circle for floodplain mitigation.
7. The total cost is approximately \$10.3 Million. Items 1 thru 4 are estimated to cost approximately \$3.3 Million. Items 5 and 6 are estimated to cost approximately \$7 Million.

The alternative solution consisted of bridging the entire Gum Swamp at a cost of approximately \$15.6 Million (\$12.6 Million for the bridge and \$3 Million for wetland mitigation).

#### ISSUE

Pond and mitigation alternatives.

#### RESOLUTION

Blueprint 2000 held an Open House on November 10 to allow the public to review and comment on the potential pond and mitigation alternatives.

Blueprint 2000 will begin to make contact with the property owners of identified mitigation sites in order to see if they are willing sellers.

#### ISSUE

Leon County School Board Maintenance Facility access.

#### RESOLUTION

LCS staff must receive a task authorization from the Board in order to begin work on joint access with Uncle Bobs Self Storage.

## **W1 - CAPITAL CIRCLE SW – Springhill Road to SR 20**

### **Project Description:**

Capital Circle (SR 263) between Springhill Road (CR 2203) and Blountstown Highway (SR 20) a distance of approximately 4.5 miles.

Using the Blueprint 2000 & Beyond “Project Definitions Report”, prepared by the Economic and Environmental Consensus Committee in 1999; the Lake Bradford Sector Plan, conducted by the Tallahassee/Leon County Planning Department; and based upon public input, Blueprint 2000 staff has identified and evaluated 17 alternative alignments, which are located in three corridors. Corridor 1 includes upgrading Capital Circle along the existing alignment; Corridor 2 includes constructing the proposed improvements to the south and west of the Tallahassee Regional Airport; Corridor 3 includes constructing the proposed improvements using portions of Orange Avenue, Tyson Road, Springhill Road, or a new alignment, etc.

### **Project Personnel:**

<b>Blueprint 2000:</b>	<b>Planning Manager:</b>	Dave Bright
	<b>Project Manager:</b>	Jim Shepherd

### **Contract Cost & Schedule Status:**

The current activities are being performed by Blueprint 2000 staff. The upcoming PD&E Study will be conducted by a consultant.

### **Schedule Milestones:**

First Citizens Group Meeting	18Jan05
First Public Meeting	25Jan05
Second Citizens Group Meeting	24Feb05
Second Public Meeting	01Mar05
Third Citizens Group Meeting	29Mar05
Third Public Meeting	05Apr05
Fourth Citizens Group Meeting	11Aug05
Fourth Public Meeting	16Aug05
IA Authorizes Blueprint Staff to Advertise for PD&E Consultant	19Sep05
IA Approves Alignments that are to be included in PD&E Study	19Sep05

### **Project Status:**

On September 19, 2005, the IA authorized staff to:

1. Advertise, select and award a contract for a PD&E consultant
2. Include only Corridor 3 in the upcoming PD&E Study
3. Send a letter to FDOT stating the planned approach for the PD&E Study.

Blueprint 2000 sent the letter to FDOT on October 3. The response was received on November 3.

## W1 - CAPITAL CIRCLE SW – Springhill Road to SR 20

### Activities Since Last Period:

1. Received response from FDOT recommending the inclusion of Corridor 1 in the PD&E Study.
2. Prepared Agenda Item for the December 15, 2005, IA meeting.

### Planned Activities for Next Period:

1. Continue preliminary activities related to the advertisement for a PD&E Consultant.
2. Load alternative alignments into ETDM.

### Significant Issues and Resolutions:

#### ISSUE

FDOT's response to Blueprint 2000's letter.

#### RESOLUTION

FDOT's response:

Dear Mr. Davis:

We have received your letter soliciting a response from the Department regarding the potential impacts of not including the existing alignment in the upcoming PD&E for this segment of S.R. 263. Thank you for the opportunity to provide assistance.

Department staff have reviewed the information contained in your transmittal, and the following comments are provided for your reference. We have been in contact with FHWA concerning future federal funding of this project should the existing alignment and the no-build alternatives be eliminated from the PD&E phase. It is the opinion of the Department and FHWA that elimination of the existing alignment and the no-build alternative may jeopardize future eligibility for federal funding. Therefore, we respectfully request that you reconsider the elimination of these alternatives from your study.

Thank you for your continued interest in transportation. If we can assist you further, please do not hesitate to contact our office.

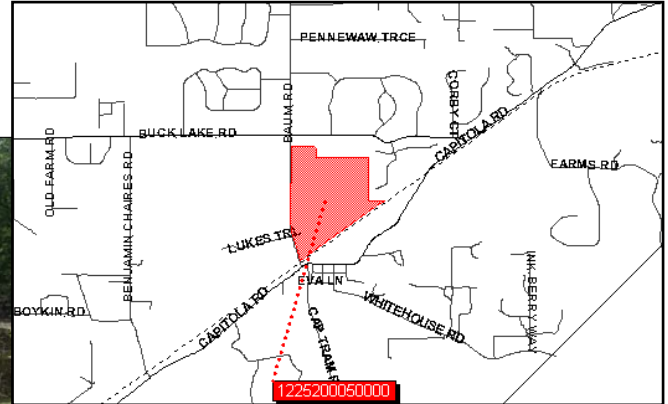
Sincerely,

/s/ H. E. Prescott

**OTHER**

**Sensitive Land Acquisitions**

1. Copeland Sink- At this time, Blueprint has secured this 168 Ac. parcel as part of a FCT Grant. This parcel is a portion of the parcels designated as protection of the Headwaters of the St. Marks.



2. Blueprint has recently secured a Conservation Easement on a 132 acre tract of land at the Headwaters of the St. Marks. This parcel is a Priority 1 parcel within the St. Marks Basin. We are currently scheduled to transfer this easement to the Northwest Florida Water Management District by the end of November.

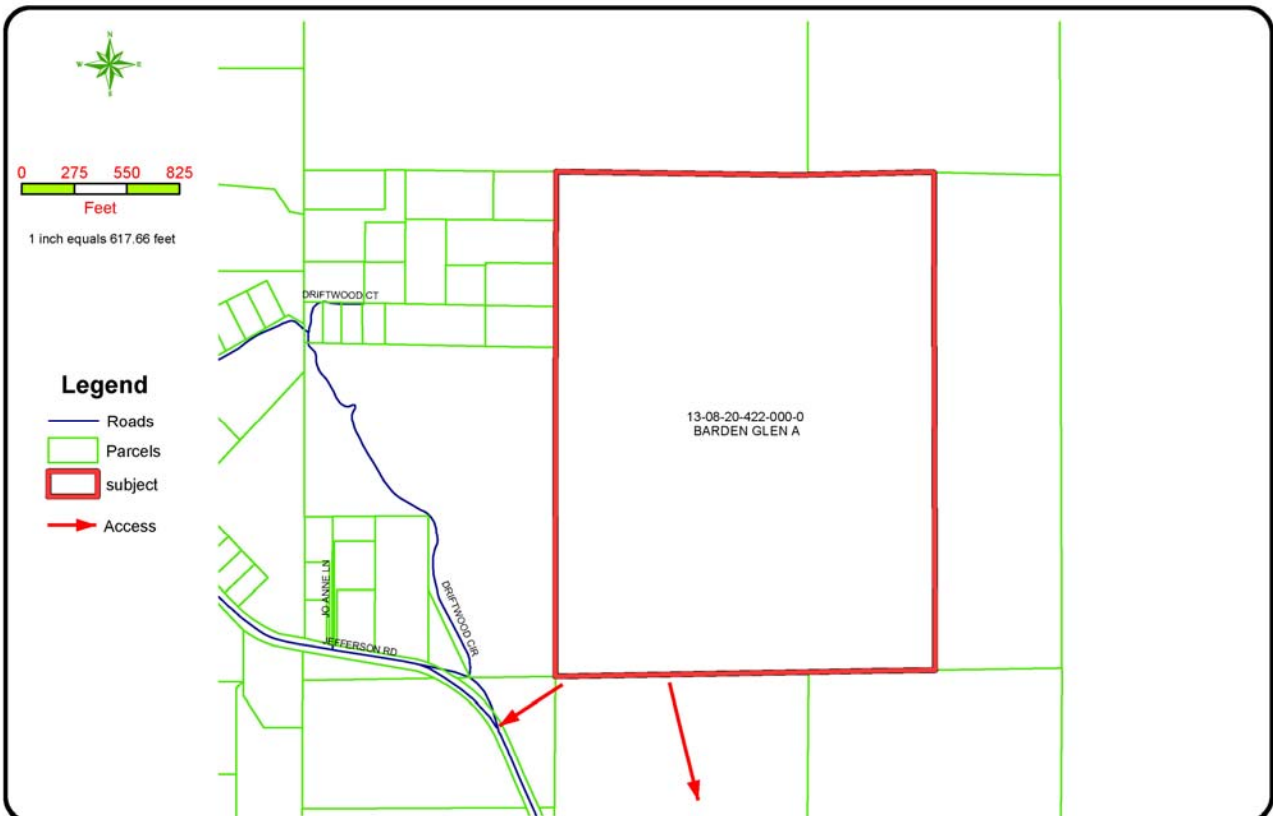


3. Blueprint is currently appraising and dealing with the property owners on a 200-acre parcel of land as part of a possible purchase or Conservation Easement for greenway preservation on Capital Circle NW.

**OTHER**

**Sensitive Land Acquisitions (continued)**

4. Blueprint has recently begun discussions with the owner of the Patty Sink concerning that tract as well as other contiguous parcels for possible purchase of conservation easements as part of preservation of the Headwaters of the St. Marks.



**DISCLAIMER**  
 This map was created using data obtained from the Tallahassee Leon County Enterprise Database. This document was prepared for the presentation of the information shown and is not intended to replace site specific or case specific investigations. Tallahassee Leon County does not guarantee the accuracy of the information shown or its suitability for any purpose other than that for which it was prepared. No liability is assumed for any errors or omissions and the user assumes all responsibility for any use of the information shown or its suitability for any purpose other than that for which it was prepared.



**PATTY SINK**  
**Exhibit D**  
**Tax Map**

Prepared For: Blueprint 2000	
Scale = 1: 5,932	Drawn By: weismans
Sheet No:	Checked by:
Job No:	Date Drawn: 04/30/2004

File Name: E:\DataRequests\BP2000\_Grants\42004\PattySink\Exhibit\_D.mxd