

Reporting Period April 9, 2008 to May 12, 2008

TABLE OF CONTENTS

I. Monthly Progress Reports

	<u>Page</u>
GEC – General Engineering Consultant	1
GEC – Public Involvement	5
N1 - Capital Circle NW – I-10 to US 90	6
N2 - Capital Circle NW/SW – SR 371 (Orange Avenue) to US 90	8
W1 - Capital Circle SW – Crawfordville Road to SR 20	13
E3 - Capital Circle SE – Woodville Highway to Crawfordville Road	17
E2 - Capital Circle SE – Woodville Highway to Tram Road	18
E1 - Capital Circle SE – Tram Road to Connie Drive	26
C2 - Capital Cascade Trail –Segment 2 Design.....	34
C3 & C4 - Capital Cascade Trail – Segment 3 and 4 Design.....	38
Mahan Drive/US 90 – Dempsey Mayo Road to I-10 (Tier 2 Blueprint Project).....	39
Acronym Glossary.....	41

GEC – GENERAL ENGINEERING CONSULTANT

Project Description:

General Engineering Consultant Contract for the Blueprint Intergovernmental Agency. The LPA GROUP INCORPORATED is the Prime Consultant with Jacobs Engineering Group, Incorporated as the major subconsultant. Twelve additional subconsultants, seven of which are MBE firms, make up the LPA/Jacobs Blueprint GEC Management Team.

Key Personnel:

Program Manager: David Snyder – THE LPA GROUP INCORPORATED
Design Manager: Jim Shepherd - Jacobs

Contract Cost & Schedule Status – Contract 597

Original Contract Amount:	\$ 12,020,012.00
Fiscal Year Re-Authorization:	\$ 5,211,303.00
Executed Supplemental Agreements:	\$ 0.00
Pending Supplemental Agreements:	\$ 0.00
Current Contract Amount:	\$ 17,231,315.00
Invoiced to Date:	\$ 12,612,463.08
Remaining Contract Amount:	\$ 4,618,851.92
Percent of Contract Amount Complete:	73.2%

GEC – GENERAL ENGINEERING CONSULTANT

Subconsultant Participation:	Contract Amt	% of GEC Contract	Expended To Date	FY To Date
Moore Bass Consulting <i>Stormwater & Landscaping</i>	\$ 292,177.00	1.70	\$ 194,822.60	\$ 86,414.17
Pope Environmental <i>Environmental Services</i>	\$ 329,276.00	1.91	\$ 156,315.00	\$ 17,625.00
OLH International <i>Program Controls</i>	\$ 1,699,730.00	9.86	\$ 1,445,750.56	\$ 106,844.22
Beck Consulting Group <i>Government Relations</i>	\$ 65,000.00	0.38	\$ 29,642.44	\$ 2,400.00
Quest Corporation of America <i>Public Involvement</i>	\$ 814,604.00	4.73	\$ 531,787.41	\$ 90,172.87
Uzzell Advertising <i>Public Relations, Web Maint.</i>	\$ 367,405.00	2.13	\$ 394,393.16	\$ 109,179.20
Welch & Ward Architects (no longer in business) <i>Architecture, Recreation Facilities</i>	\$ 25,000.00	0.15	\$ 14,945.00	\$ 0.00
THC Right-of-Way Services, Inc. <i>R/W appraisal and acquisition</i>	\$ 3,891,999.00	22.59	\$ 2,444,998.02	\$ 799,409.10
GPI Southeast <i>Survey and mapping</i>	\$ 421,406.00	2.45	\$ 177,009.62	\$ 4,672.08
Weigal - Veasey <i>Property Appraisal</i>	\$ 0.00	0.00	\$ 0.00	\$ 0.00
Williams Earth Sciences <i>Geotechnical Services</i>	\$ 35,000.00	0.20	\$ 14,136.53	\$ 9,849.75
Allen Nobles & Associates <i>Survey</i>	\$ 0.00	0.00	\$ 80,836.00	\$ 7,110.00
THE LPA GROUP (PRIME) <i>Prime Consultant</i>	\$ 4,948,472.00	28.72	\$ 4,187,573.78	\$ 837,815.07
JACOBS (PRIME SUB) <i>Prime Subconsultant</i>	\$ 4,341,245.00	25.19	\$ 2,940,252.96	\$ 466,188.90
Total Contract:	\$ 17,231,314.00	100.00%	\$ 12,612,463.08	\$ 2,537,680.36

MBE Goal:	\$ 2,670,853.67	15.50%
MBE to Date:	\$ 2,767,656.17	21.94%

GEC – GENERAL ENGINEERING CONSULTANT

Activities Since Last Period:

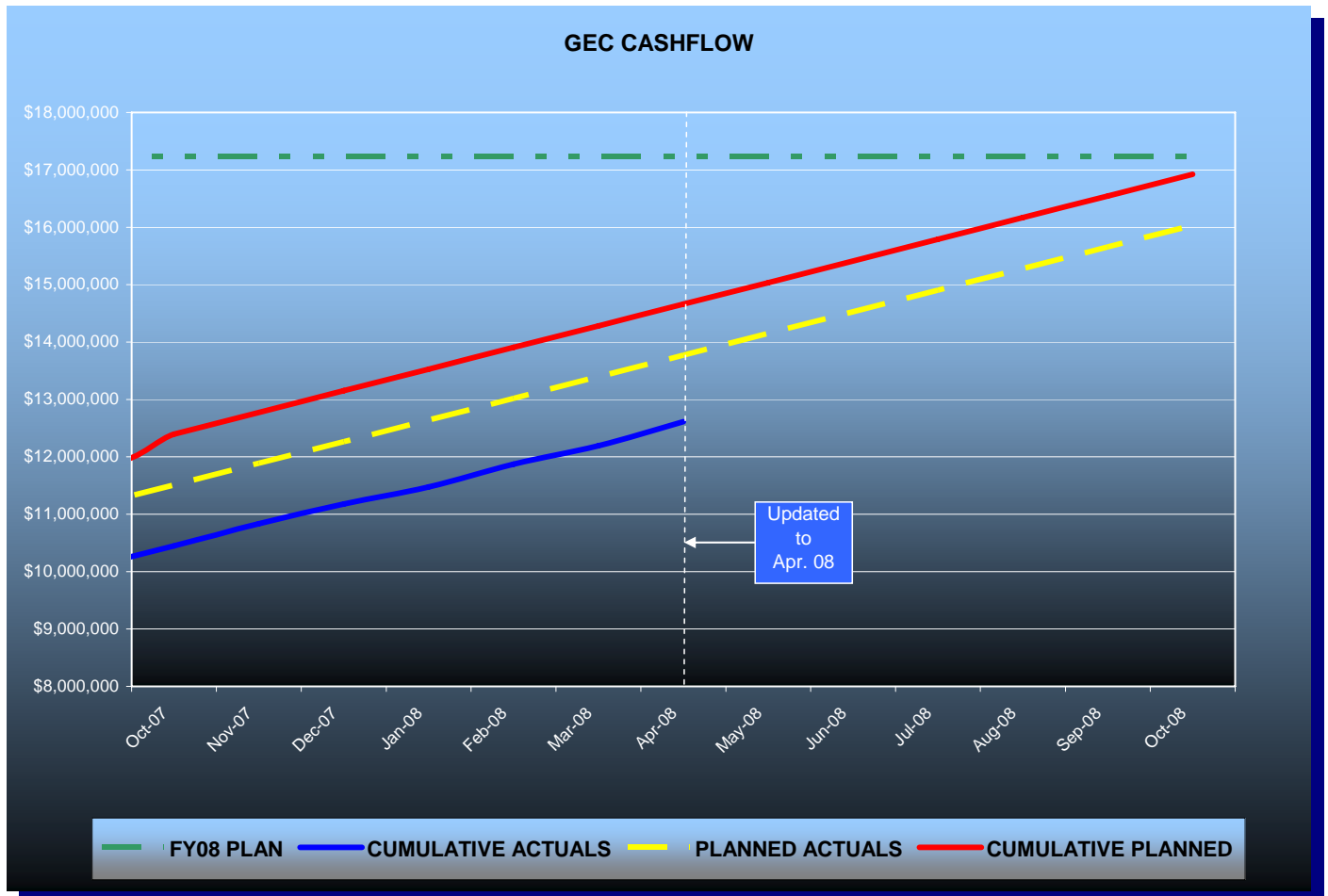
1. Preparation for May 12th Public Hearing on CCNW/SW-N2
2. Karst features work conducted at CCSE-E2 Ponds 200 and 600 via electro-resistivity testing
3. Finalized details for Ribbon Cutting Ceremony on CCSE-E1 for May 21st
4. LOA with URS for contamination issues at CCT Segment 2
5. Continued negotiations with Kimley-Horn on CCT Segments 3 & 4
6. Invitation for Bid on Regional Stormwater Pond #1 ready for COT review
7. Snail removal and future control of snails in Regional Stormwater Pond #1 underway
8. Met with FDOT District 3 to update status of Blueprint 2000 projects and financials
9. Continued Maintenance Map preparation for CCSE-E1
10. Finalized comments on the SR 10 (US 90) Mahan Drive design plans

Planned Activities for Next Period:

1. Issue Letter of Authorization for Phase 1A, CCT Segments 3 & 4
2. Execute contract for the remediation plan for CCT, Segment 2
3. Continue with preparation of Maintenance Maps for transfer on CCSE-E1
4. Coordinate with COT GM for permitting on CCSE-E2, Segments 1B, 3A and 2
5. Respond to comments made at May 12th Public Hearing on CCNW/SW-N2
6. Provide direction on the remaining CCT Segment 2 park amenities
7. Continue with Right-of-Way activities on CCNW/SW-N2 project

GEC – GENERAL ENGINEERING CONSULTANT

GEC Contract Financial Summary of Planned Vs. Actual Costs – FISCAL YEAR 2008



GEC – PUBLIC INVOLVEMENT

Activities Since Last Period:

1. Organized and held Public Hearing for CCNW/SW-N2
2. Continued to organize Ribbon Cutting for CCSE-E1
3. Prepared presentation for FES
4. Continued to coordinate development of new website
5. Coordinated interview for Jim Davis with WCTV
6. Prepared CD for TV show "Usual Suspects"

Planned Activities for Next Period:

1. Continue to organize and hold Ribbon Cutting for CCSE-E1
2. Coordinate launching of new website with search database
3. Attend TCC and CAC Meeting
4. Attend IA Meeting
5. Respond to comments made at May 12th Public Hearing on CCNW/SW-N2
6. Organize and attend Community Representative Meeting for CCSW-W2

N1 - CAPITAL CIRCLE NW – I-10 TO US 90

Project Description:

This 1.991-mile roadway project (FPID: 219722-1-52-01 & 02) consists of upgrading the existing undivided rural facility to a six-lane divided urban (curb and gutter) facility. Upgrades to the West Tennessee, Tharpe, Hartsfield and Commonwealth intersections are included. The purpose of the roadway improvement project is to increase the capacity and safety of the existing highway. The roadway project was designed, let and constructed by the Florida Department of Transportation, with advance funding provided by the Blueprint 2000 Intergovernmental Agency.

Project Personnel:

Blueprint 2000: **Project Manager:** Marcus Kelly

Project Status:

Work commenced 9/25/05

Final accepted by FDOT on 9/4/07

Financial Data:

Original Contract Amount (FDOT Construction Only) = \$24,172,803.43

- ◆ **Final Amount Payable (FDOT Construction Only) = \$25,111,616.13** (includes \$822,445.20 Fuel & Bit Adjustment and \$406K for Early Completion Incentive Bonus)

* This amount does not include CEI Costs

Original JPA Work (Utility Work funded by COT) = \$1,290,120.00

- ◆ **Final Amount Payable (JPA-COT utility work) = \$1,259,912.00**

Outstanding Issues:

- ◆ Blueprint 2000 is in the process of preparing contract documents and preparing to receive bids for landscaping within the CCNW-N1 Project Limits, including Pond #1.

N1 - CAPITAL CIRCLE NW – I-10 TO US 90

Right-Of-Way Status Report:

IN POSSESSION AND CLOSED	125
IN POSSESSION BUT NOT CLOSED	2
DONATION	4
NEGOTIATING/PREPARING FOR SUIT	0
TOTAL PARCELS ON PROJECT	125

As of April 2008 FDOT reported:

Right-of-Way cost expended so far is approximately \$46,200,000
 There are 2 parcels remaining to be settled through mediation;
 The total Right-of-Way cost is estimated to be \$47,000,000.

N2 - CAPITAL CIRCLE NW/SW – SR 371 (ORANGE AVE.) TO US 90

Project Description:

The Expanded Project Development and Environment (PD&E) Study limits for this 2.9 mile project extend from Tennessee Street (US 90/SR 10) to Orange Avenue (SR 371). The purpose of this roadway improvement project is to increase the capacity and safety of the existing highway by expanding the existing two-lane undivided rural roadway to a six-lane divided urban (curb and gutter) facility. New traffic signals will be provided at Orange Avenue, Blountstown Highway and Gum Road Intersections. The project also includes significant landscaping as well as pedestrian, bicycle and recreational amenities. This project will develop final design plans for construction.

Project Personnel:

Blueprint 2000:	Program Manager:	David Snyder
	Construction Manager:	Marcus Kelly
	Project Manager:	Latesa Turner
H.W. Lochner:	Project Manager:	Hugh Williams

Contract Cost & Schedule Status - Agreement No. 772/Authorization 1 - As of 5/12/2008

Contract Commencement:	10May04
Contract Completion:	10May07
Percent of Work Performed:	80.0%
Original Contract Amount:	\$ 1,921,585.90
Executed Supplemental Agreements:	\$ 3,184,237.18
Pending Supplemental Agreements:	\$ 0.00
Current Contract Amount:	\$ 5,105,823.08
Invoiced to Date:	\$ 4,242,841.49
Remaining Contract Amount:	\$ 862,981.59
Percent of Contract Amount Complete:	83.1%
Original Contract Time:	1095 Days
Contract Time Extensions:	478 Days
Current Contract Time:	1573 Days
Contract Time Expended:	1463 Days
Contract Time Remaining:	110 Days
Percent Contract Time Expended:	93.0%

Schedule Milestones:

Final Environmental Documents	20Jun06
Final Preliminary Engineering Report	20Jun06
Location Design Concept Approval (LDCA)	22Aug06
30% Roadway Plans	28Aug06
VE Complete	27Oct06
2nd Draft Right-of-Way Maps	30Apr07
Final Right-of-Way Maps	30Sep07
60% Roadway Plans	01Nov07
90% Plans	11Feb08
100% Plans	28Apr08
Final Plans	30Jun08

N2 - CAPITAL CIRCLE NW/SW – SR 371 (ORANGE AVE.) TO US 90

Design Subconsultant Participation:	Contract Amt	% of Design Contract	Expended To Date	FY To Date
Environmental Geotechnical Specialists				
<i>Geotechnical</i>	\$ 482,783.31	9.46	\$ 397,099.20	\$ 61,316.10
Diversified Design & Drafting Services, Inc.				
<i>Survey and R/W Mapping</i>	\$ 803,644.64	15.74	\$ 732,919.20	\$ 119,366.42
Archaeological Consultants, Inc.				
<i>Cultural Resource Assessment</i>	\$ 24,093.51	0.47	\$ 24,093.51	\$ 13,146.36
HNTB/TEI				
<i>Traffic Analysis</i>	\$ 90,310.59	1.77	\$ 90,310.59	\$ 0.00
American Acquisition Group				
<i>Right of Way</i>	\$ 97,873.48	1.92	\$ 94,046.22	\$ 0.00
HW LOCHNER (PRIME)				
<i>Prime Consultant</i>	\$ 3,405,867.55	66.71	\$ 2,758,682.77	\$ 1,027,104.93
PBS&J				
<i>Landscape</i>	\$ 143,815.00	2.82	\$ 95,131.00	\$ 95,131.00
CDM				
<i>Stormwater Modeling</i>	\$ 57,435.00	1.12	\$ 50,559.00	\$ 50,559.00
<hr/>				
Total Design Contract:	\$ 5,105,823.08	100.00%	\$ 4,242,841.49	\$ 1,366,623.81

Design MBE Goal:	\$ 791,402.58	15.50%
Design MBE to Date:	\$ 1,154,111.91	27.20%

Project Status:

Conducting pond & mitigation analysis and design. Pond and mitigation area surveys continue. Lochner is proceeding with Phase 3 (90%) plans development and environmental permitting of the project. Right-of-Way acquisition process is on-going. Blueprint held Access Management Public Hearing on May 12, 2008 to address the access management reclassification of the project from Class 5 to Class 3.

N2 - CAPITAL CIRCLE NW/SW – SR 371 (ORANGE AVE.) TO US 90

Activities Since Last Period:

1. Continued preparation of R/W map revisions, legal descriptions and sketches for mitigation areas
2. Continued development of Phase 3 (90%) roadway, lighting, signalization, signing/pavement marking and landscape plans
3. The final XP-SWMM Technical Memorandum was prepared and submitted
4. Updated Bridge Hydraulics Report at Gum Creek, based on findings in XP-SWMM Model
5. Continued preparation of the Environmental Impact Assessment (EIA) for submittal to Leon County Growth Management
6. Received review comments on the preliminary erosion control plan. Continued preparation of Phase 3 erosion control plans
7. Prepared and submitted the Wall Study for MSE wall in NE quadrant of CSX Railroad
8. Held Public Hearing for Access Management Reclassification

Planned Activities for Next Period:

1. Complete response to DEP on items in wetland permit after incorporation of Hollon property data
2. Complete preparation of revised roadway, pond and mitigation R/W documents, and submit
3. Respond to review comments as needed from City, County, and FDOT when those reviews are completed
4. Prepare for and attend R/W coordination meeting to be held on May 30
5. Continue utility coordination. Prepare for utility coordination meeting scheduled for June 3
6. Finalize and submit the Gum Creek Bridge Hydraulics Report and Bridge Development Report
7. Continue further development of the erosion control plans, based on review comments
8. After incorporation of the Hollon property data, finalize the Environmental Impact Assessment (EIA), and submit it to Leon County Growth Management
9. Continue further coordination and follow up on solutions to the apple snail problem
10. Investigate revised typical section and R/W requirements for SR 20 at west end

N2 - CAPITAL CIRCLE NW/SW – SR 371 (ORANGE AVE.) TO US 90

Significant Issues and Resolutions:

ISSUE

Utility companies' desire to have R/W cleared 6 months prior to letting.

RESOLUTION

Coordination with utility companies is ongoing.

ISSUE

Complete the EIA and DEP permit responses.

RESOLUTION

Will be completed as activities associated with the SA 7 are completed.

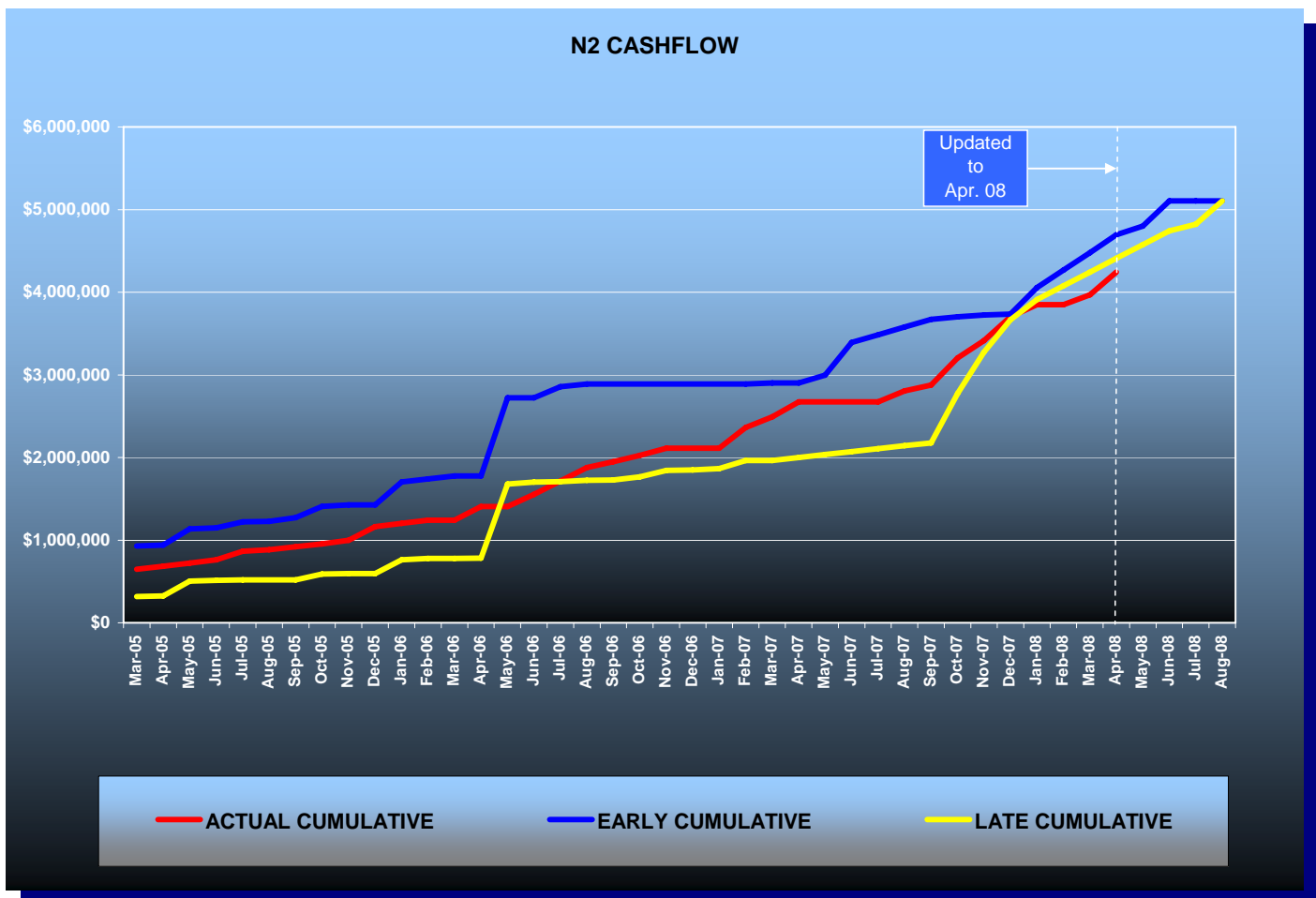
ISSUE

Blueprint needs to update project schedule.

RESOLUTION

Lochner is developing a revised design schedule based on the changes associated with supplemental 7.

Contract Financial Summary of Planned Vs. Actual Costs



N2 - CAPITAL CIRCLE NW/SW – SR 371 (ORANGE AVE.) TO US 90

Right-Of-Way Status Report:

CLOSED - (IN POSSESSION)	14
AGREEMENTS SECURED BUT NOT CLOSED	6
DONATION	0
NEGOTIATING/PREPARING FOR SUIT	55
TOTAL PARCELS ON PROJECT	75

Blueprint continues to receive parcel appraisals, and the review appraisals; and offers are being made.

W1 - CAPITAL CIRCLE SW – CRAWFORDVILLE ROAD TO SR 20

Project Description:

A Project Development and Environmental (PD&E) Study will be conducted for that portion of Capital Circle (SR 263) between Crawfordville Road (SR 61 US 319) and Blountstown Highway (SR 20) a distance of approximately 6.7 miles. The PD&E study will be conducted in accordance with Federal Highway Administration (FHWA), Blueprint 2000 Agency, and Florida Department of Transportation (FDOT) guidelines. The study will evaluate alternative alignments as well as the existing alignment. Several viable alternatives will be developed and evaluated in order to address the project needs while taking into account the Blueprint 2000 & Beyond “Project Definitions Report”, prepared by the Economic and Environmental Consensus Committee in 1999, and the Lake Bradford Sector Plan, conducted by the Tallahassee/Leon County Planning Department.

Project Personnel:

Blueprint 2000:	Planning Manager:	Dave Bright
	Project Manager:	Latesa Turner
Kimley-Horn & Assoc.:	Project Manager:	Steve Godfrey

Contract Cost & Schedule Status - Agreement No. 1284/Authorization 1 - As of 5/12/2008

Contract Commencement:	22Aug06
Contract Completion:	22Aug09
Percent of Work Performed:	61.0%
Original Contract Amount:	\$ 2,672,271.68
Executed Supplemental Agreements:	\$ 27,108.76
Pending Supplemental Agreements:	\$ 0.00
Current Contract Amount:	\$ 2,699,380.44
Invoiced to Date:	\$ 1,575,767.64
Remaining Contract Amount:	\$ 1,123,612.80
Percent of Contract Amount Complete:	58.4%
Original Contract Time:	1096 Days
Contract Time Extensions:	0 Days
Current Contract Time:	1096 Days
Contract Time Expended:	629 Days
Contract Time Remaining:	467 Days
Percent Contract Time Expended:	57.4%

Schedule Milestones:

Consultant Selected	26May06
Study Begins	22Aug06
Agency Kick-off Meeting	19Oct06
Public Kick-off Meeting	19Oct06
Community Mini-Charrettes	15Jan07
Community Meeting	12Apr07
Corridor/Concepts Charrette	10May07
Interim Public Meeting	06Nov07
Alternatives Public Information Meeting	TBD
Preferred Alternative Public Meeting	10Dec08
Public Hearing	01Jun09

W1 - CAPITAL CIRCLE SW – CRAWFORDVILLE ROAD TO SR 20

Design Subconsultant Participation:	Contract Amt	% of Design Contract	Expended To Date	FY To Date
Target Copy and Sign Printers				
<i>Printing</i>	\$ 30,000.00	1.11	\$ 23,414.58	\$ 2,872.40
Keystone Field Services				
<i>Relocation</i>	\$ 35,000.00	1.30	\$ 0.00	\$ 0.00
Environmental and Geotechnical Specialists				
<i>Geotech</i>	\$ 127,874.94	4.74	\$ 82,090.79	\$ 47,738.85
Diversified Design & Drafting Services				
<i>Survey</i>	\$ 59,830.00	2.22	\$ 0.00	\$ 0.00
StategyWise, LLC				
<i>Economic Development</i>	\$ 19,500.00	0.72	\$ 0.00	\$ 0.00
Hamilton Smith Assoc.				
<i>Traffic</i>	\$ 18,600.00	0.69	\$ 18,600.00	\$ 0.00
Registe, Sliger Engineering				
<i>Structures</i>	\$ 123,376.71	4.57	\$ 27,266.25	\$ 0.00
KIMLEY-HORN & ASSOC (PRIME)				
<i>Prime</i>	\$ 1,612,223.40	59.73	\$ 1,010,241.04	\$ 258,882.50
Dr. Wayson				
<i>Noise</i>	\$ 30,147.25	1.12	\$ 0.00	\$ 0.00
Hass Center				
<i>Economic Development</i>	\$ 37,200.00	1.38	\$ 18,600.00	\$ 18,600.00
Florida Acquisition & Appraisal				
<i>Appraisal/Acquisition</i>	\$ 235,804.91	8.74	\$ 165,371.69	\$ 23,346.60
Biological Research Assoc.				
<i>Water Quality</i>	\$ 117,315.50	4.35	\$ 62,538.57	\$ 7,333.39
Search, Inc				
<i>Cultural Resource/Archaeological</i>	\$ 53,826.73	1.99	\$ 10,765.35	\$ 10,765.35
Camp, Dresser & McKee				
<i>Drainage & Pond Design</i>	\$ 198,681.00	7.36	\$ 156,879.37	\$ 30,705.35
<hr/>				
Total Design Contract:	\$ 2,699,380.44	100.00%	\$ 1,575,767.64	\$ 400,244.44

Design MBE Goal:	\$ 418,403.97	15.50%
Design MBE to Date:	\$ 151,371.62	9.61%

W1 - CAPITAL CIRCLE SW – CRAWFORDVILLE ROAD TO SR 20

Project Status:

Kimley-Horn and Associates began the Capital Circle Southwest PD&E study in late August, 2006.

The Public and Agency Kickoff Meetings were conducted in October, 2006.

Six (6) Community Forum Meetings were conducted concluding with a Town Hall Meeting held in April 2007.

The Concept Charrettes were held on May 10th and 12th, 2007.

The Intergovernmental Agency approved the evaluation criteria and the criteria weighting that will be used to evaluate the alternative alignments.

An Interim Public Meeting was held on November 6, 2007 to present the status of the project since the Concepts Charette.

Ten (10) Community Representatives meetings have been held through the month of April 2008.

The project has begun the analysis phase using the alternatives alignments established through the Concept Charrette process.

Activities Since Last Period:

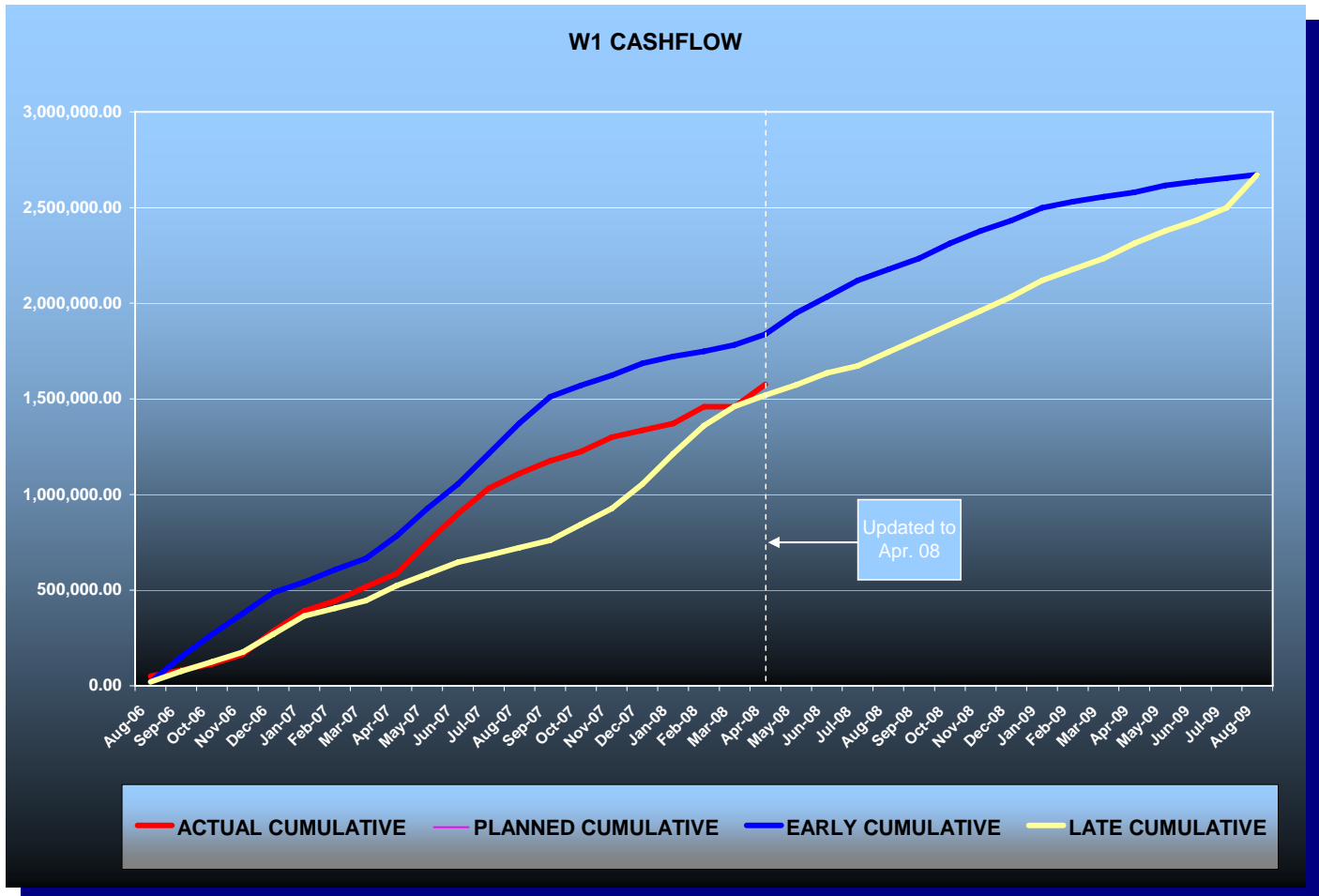
1. Continued to coordinate ETDM publishing and re-screening
2. Coordinated Advance Notification (AN) submittal
3. Continued preparation for FHWA class of action meeting
4. Continued preparation for Alternatives Public Meeting
5. Developed strategies for meeting with ETDM/ETAT members prior to comment
6. Provided a CR update and held a CR conference call
7. Continued to coordinate stormwater pond sizing
8. Continued alternative alignment refinements
9. Continued preparation of alternative analysis matrix
10. Finalized and submitted Corridor Alternatives Report
11. Continued preparation of 1st draft Project Development Summary Report (PDSR)
12. Continued development of alternative alignment construction costs
13. Identified survey sites
14. Submitted the PDSR Table of Contents for review
15. Continued development of alternative alignment R/W costs
16. Revised the Endangered Species and Biological Assessment Report

Planned Activities for Next Period:

1. Schedule and hold meetings with ETDM/ETAT members
2. Continue preparation for FHWA class of action meeting
3. Schedule and hold meeting with FDOT regarding ETDM and class of action
4. Continue preparation for Alternatives Public Meeting
5. Continue coordinating stormwater pond sizing and locations
6. Refine pond locations and R/W costs
7. Continue refining alternatives
8. Continue preparation of alternatives analysis matrix
9. Complete revisions to Typical Section Package
10. Continue preparation of Project Development Summary Report
11. Complete R/W cost estimates for Springhill Road
12. Preparation of the Pre-draft Noise evaluation
13. Finalize the Endangered Species and Biological Assessment Report
14. Continue monitoring of Black Swamp
15. Prepare for June Community Representatives meeting

W1 - CAPITAL CIRCLE SW – CRAWFORDVILLE ROAD TO SR 20

Contract Financial Summary of Planned Vs. Actual Costs



E3 - CAPITAL CIRCLE SE – WOODVILLE HWY TO CRAWFORDVILLE RD

Project Description:

This project proposes to widen approximately 1.53 miles of the existing two-lane Capital Circle SE from Woodville Highway to Crawfordville Road to a multi-lane urban facility.

FDOT Roadway ID: 55002000 SR 263 from MP 0.200 to MP 1.730

Project Personnel:

Blueprint 2000:	Engineering Manager:	Jim Shepherd
	Project Manager:	Gary Phillips
URS Corporation:	Project Manager:	Chris Lovett

Project Status:

Contract and Letter of Authorization was executed on February 2, 2006

URS completed Part A of their contract – the preparation of 60% design plans – at a cost of \$996,151,54. The project has been stopped at 60% design. Blueprint is seeking construction funds (TRIP Funding) to initiate a Design-Build contract.

MBE Participation = 16.0%

Right-Of-Way Status Report:

Right-of-Way maps are at 100%. We are in the position to begin acquiring Right-of-Way as funding becomes available.

The USFS submitted Stipulations for Capital Circle Southeast for FDOT and Blueprint 2000 review. Once the Stipulations are approved, the easement request will continue to be processed.

E2 - CAPITAL CIRCLE SE – WOODVILLE HIGHWAY TO TRAM ROAD

Project Description:

This project proposes to widen approximately 2.3 miles of the existing two-lane Capital Circle SE from Woodville Highway to Tram Road to an ultimate six-lane facility, mileposts 0.0 to 2.12. In addition, a transitional segment west of Woodville Highway (SR 263 MP 0.0 to approximately MP 0.2). The purpose of the roadway improvement project is to increase the capacity and safety of the existing highway. New traffic signal will be installed at access to Lakes St. Marcos development on Woodville Highway, south of CCSE. Provisions for future traffic signals will be provided at three intersections: Paul Russell Road and two unnamed access roads to proposed developments on the north side of CCSE, between Woodville Highway and Tram Road. The project includes significant landscaping as well as pedestrian, bicycle and recreational amenities.

Project Personnel:

Blueprint 2000:	Program Manager:	David Snyder
	Project Manager:	Marek Romanowski
	Construction Manager:	Marcus Kelly
Sandco Inc./Genesis:	Project Manager:	Bob Myrick
	Design PM:	Jim Sullivan

Contract Cost & Schedule Status - Agreement No. 1464 - As of 5/12/2008

Contract Commencement:	28Aug07
Contract Completion:	13Feb10
Percent of Work Performed:	16.3%
Original Contract Amount:	\$ 17,616,609.90
Executed Supplemental Agreements:	\$ 250,000.00
Pending Supplemental Agreements:	\$ 0.00
Current Contract Amount:	\$ 17,866,609.90
Invoiced to Date:	\$ 2,908,350.96
Remaining Contract Amount:	\$ 14,958,258.94
Percent of Contract Amount Complete:	16.3%
Original Contract Time:	900 Days
Contract Time Extensions:	0 Days
Current Contract Time:	900 Days
Contract Time Expended:	258 Days
Contract Time Remaining:	642 Days
Percent Contract Time Expended:	28.7%

Schedule Milestones:

Contract with DB Team executed	05Jun07
Notice To Proceed	28Aug07
Ground Breaking Ceremony	29Aug07
COT EMP permit for Segment 1B	24Mar08
Project Final Completion Date	13Feb10

E2 - CAPITAL CIRCLE SE – WOODVILLE HIGHWAY TO TRAM ROAD

Design Subconsultant Participation:	Contract Amt	% of Design Contract	Expended To Date	FY To Date
EGS				
<i>Environmental Engineering</i>	\$ 132,655.00	10.99	\$ 83,241.70	\$ 83,241.70
Mehta & Associates, Inc.				
<i>Design Survey</i>	\$ 44,000.00	3.64	\$ 28,600.00	\$ 28,600.00
Genesis Group				
<i>Prime Consultant of Design Team</i>	\$ 1,030,702.00	85.37	\$ 836,745.52	\$ 836,745.52
<hr/>				
Total Design Contract:	\$ 1,207,357.00	100.00%	\$ 948,587.22	\$ 948,587.22

Design MBE Goal:	\$ 187,140.34	15.50%
Design MBE to Date:	\$ 111,841.70	11.79%

Construction Subconsultant Participation:	Contract Amt	% of Design Contract	Expended To Date	FY To Date
Florida Developers				
<i>Earthwork, Trucking, Drainage</i>	\$ 1,056,996.50	6.44	\$ 349,950.49	\$ 349,950.49
Gains & Sons				
<i>Striping</i>	\$ 123,316.27	0.75	\$ 0.00	\$ 0.00
Hawthorn Construction				
<i>Curb & Gutter, Concrete Work</i>	\$ 880,830.50	5.37	\$ 0.00	\$ 0.00
Ingram Signalization Inc.				
<i>Signalization</i>	\$ 616,581.50	3.76	\$ 0.00	\$ 0.00
Tallahassee Contractors				
<i>Trucking, Limerock Base</i>	\$ 1,056,996.50	6.44	\$ 122,108.96	\$ 122,108.96
Sandco, Inc				
<i>Prime Contractor of DB Team</i>	\$ 12,674,531.63	77.24	\$ 1,486,467.04	\$ 1,486,467.04
<hr/>				
Total Construction Contract:	\$ 16,409,252.90	100.00%	\$ 1,958,526.49	\$ 1,958,526.49

Construction MBE Goal:	\$ 3,445,943.11	21.00%
Construction MBE to Date:	\$ 472,059.45	24.10%

E2 - CAPITAL CIRCLE SE – WOODVILLE HIGHWAY TO TRAM ROAD

Project Status:

The Design-Build Contract was executed on 6/05/07. Utility kick-off meeting was held on 6/27/07. The Pre-construction Conference and the Public Meeting were held on 7/24/07. Joint Project Agreement (JPA) was entered into by St. Joe Company, City of Tallahassee and Blueprint 2000 on 7/31/07. Per terms of this JPA, easements for five drainage ponds and Right-of-Way donated to the project by St. Joe have been obtained from St. Joe. Notice to Proceed was issued to the Design-Build Team on 8/28/07.

The National Features Inventory (NFI) report was approved by the COT Growth Management. The COT GM issued the Environmental Impact Assessment exemption (EIA short form B (low)) for Segments 1 and 3A in October 2007. The EIA for Segment 2 was approved by COT GM on 12/18/07. The Clearing and Grubbing Permit, including "sediment sumps" located at the future stormwater pond sites, and fill stockpiling permit, have also been issued by GM for Segments 1 and 3A. The clearing permit for Segment 2 was issued on 1/17/08, with the exception of Pond 600. The clearing permit for Pond 600 was obtained in March 2008. The Stormwater Permit was received from the Department of Environmental Protection. The EMP permit for Segment 1B was obtained from COT Growth Management on 3/24/08. The EIA for Segment 3B was approved by Growth Management on 5/08/08.

The Electrical Resistivity Imaging (ERI) testing is now complete for Pond 200, Pond 300 conveyance easement and Pond 600. The soil borings at Pond 600 and 300 conveyance are in progress.

Utility relocation schedules have been prepared and signed by the Utility Companies. Utility relocation work has been in progress since the beginning of February 2008.

Some approved embankment material has been stockpiled on eastbound lanes on Segments 1 and 3A. Excavation of "sedimentation pits" is near completion at the locations of Ponds 300, 400 and 500.

The Dispute Resolution Board (DRB) meeting was held on 4/29/08.

Activities Since Last Period:

1. Completed Electrical Resistivity Imaging (ERI) investigations of karst features at Pond 200, Pond 300 (including conveyance easement) and Pond 600
2. Continued intersection design for Southchase Boulevard, Merchants Row Boulevard and Sembler Commercial access (right-in, right-out)
3. Continued utility relocation coordination
4. Continued installation of the re-use water line
5. Working towards 100% complete plans
6. Obtained approval of the Environmental Impact Analysis for Segment 3B

E2 - CAPITAL CIRCLE SE – WOODVILLE HIGHWAY TO TRAM ROAD

Planned Activities for Next Period:

1. Conduct CEI progress and utility meeting, DRB meeting and design progress meeting
2. Complete 100% plans for Segments 1A, 1B and 3A and submit them to Blueprint for review and comments
3. Obtain EMP permits for Segments 1A and 3A
4. Continue geotechnical investigation of karst features in Pond 300 conveyance easement and Pond 600
5. Continue utility relocation coordination
6. Continue Sanitary gravity sewer installation
7. Continue drainage and roadway design for Segments 2 and 3B
8. Remove existing Shell station building in southwest quadrant of Capital Circle/Woodville intersection and conduct subsurface soil investigation at Pond 100

Significant Issues and Resolutions:

ISSUE

The COT Engineering Department requested price proposals for a permanently installed irrigation system along the corridor of CCSE from Woodville Highway to Tram Road.

RESOLUTION

Blueprint 2000 requested, on the City's behalf, a price proposal from Sandco/Genesis. A price proposal has been received. Subsequently Blueprint 2000 has asked for a more detailed price proposal which has been provided by Sandco, and which is currently under review by COT Engineering Department. Blueprint will continue to monitor the issue and will prepare a supplemental agreement for additional work for irrigation system once the agreement between Sandco and the City has been reached.

E2 - CAPITAL CIRCLE SE – WOODVILLE HIGHWAY TO TRAM ROAD

**CCSE – MTS Communications Pulling Embarq Fiber Optic Cables
into Pre-Installed PVC Conduits**



E2 - CAPITAL CIRCLE SE – WOODVILLE HIGHWAY TO TRAM ROAD

**CCSE – COT Electric at Transmission Line Substation
Running Underground Power Cables along Transmission Easement**

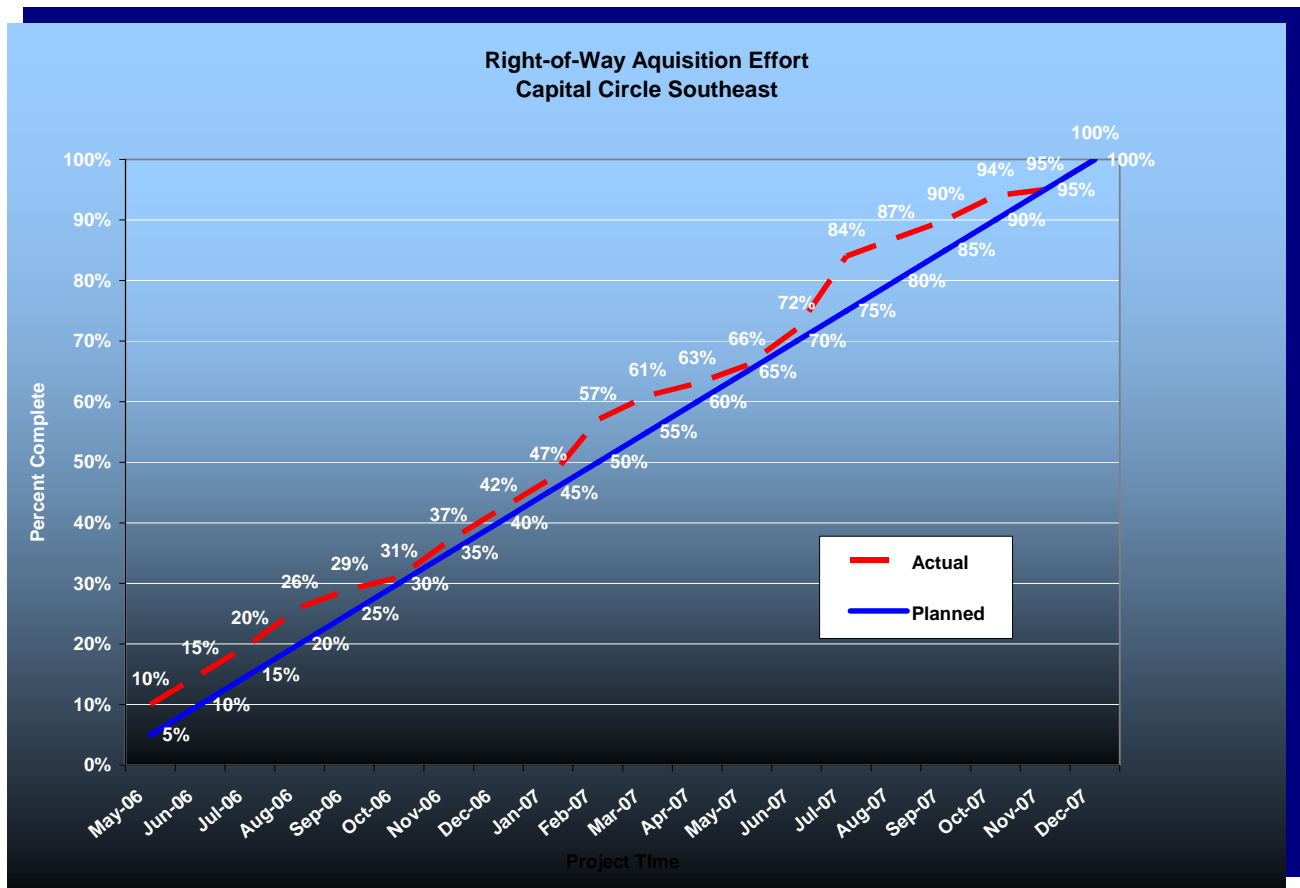


E2 - CAPITAL CIRCLE SE – WOODVILLE HIGHWAY TO TRAM ROAD

Right-Of-Way Status Report:

CLOSED - (IN POSSESSION)	17
IN POSSESSION BUT NOT CLOSED	2
DONATION	6
TO BE CLOSED	0
TOTAL PARCELS ON PROJECT	25

This project has 25 parcels.



E1 - CAPITAL CIRCLE SE – TRAM ROAD TO CONNIE DRIVE

Project Description:

The proposed 3.44-mile project along Capital Circle Southeast (US 319/SR261) extends from south of Tram Road to Connie Drive (milepost 1.931 and 5.371) in Leon County and includes expanding the existing two-lane undivided rural roadway to a six-lane divided urban (curb and gutter) facility. The purpose of the roadway improvement project is to increase the capacity and safety of the existing highway. New traffic signals, including ITS features, will be provided at six intersections: Tram Road, Shumard Oak Boulevard, Merchants Row Drive, Blair Stone Road, Orange Avenue and Old St. Augustine Road. The project also includes significant landscaping as well as pedestrian, bicycle and recreational amenities.

Project Personnel:

Blueprint 2000:	Program Manager:	David Snyder
	Project Manager:	Marek Romanowski
	Construction Manager:	Marcus Kelly
Joint Venture/PBS&J:	Project Director, JV:	William Mayfield
	Project Mgr., PBS&J:	Steve Martin

Contract Cost & Schedule Status - As of 5/12/2008

Contract Commencement:	10Jan05
Contract Completion:	02Oct07
Percent of Work Performed:	92.2%
Original Contract Amount:	\$ 30,796,339.34
Executed Supplemental Agreements:	\$ 6,078,445.70
Pending Supplemental Agreements:	\$ 209,108.97
Current Contract Amount:	\$ 36,874,785.04
Invoiced to Date:	\$ 33,998,957.77
Remaining Contract Amount:	\$ 2,875,827.27
Percent of Contract Amount Complete:	92.2%
Original Contract Time:	995 Days
Contract Time Extensions:	252 Days
Current Contract Time:	1247 Days
Contract Time Expended:	1218 Days
Contract Time Remaining:	29 Days
Percent Contract Time Expended:	97.7%

E1 - CAPITAL CIRCLE SE – TRAM RD TO CONNIE DR

Schedule Milestones:

Intergovernmental Agency (IA) Approval	20Sep04
Execute Contract	22Dec04
Notice to Proceed	10Jan05
Right-of-Way Acquisition, Phase 1	01May05
Right-of-Way Acquisition, Phase 2	01Sep06
60% Design Submission - Segment I	28Feb05
90% Design Submission - Segment II	15Apr05
Final Design Submission - Segment II	25Jul05
90% Design Submission - Segment IV	30Aug05
90% Design Submission - Segment III	05Oct05
90% Design Submission - Segment I	14Feb06
Final Design Submission - Segment IV	24May06
Final Design Submission - Segment III	15Aug06
Final Design Submission - Segment I	17May06
Contract Completion	06Jun08

Design Subconsultant Participation:	Contract Amt	% of Design Contract	Expended To Date	FY To Date
Diversified Design & Drafting Services, Inc.				
<i>Design survey</i>	\$ 111,758.50	5.48	\$ 77,230.00	\$ 0.00
Allen Nobles & Associates, Inc.				
<i>Tree survey for permit application</i>	\$ 18,000.00	0.88	\$ 18,000.00	\$ 0.00
Environmental & Geotechnical Specialists, Inc.				
<i>Geotechnical design services</i>	\$ 163,985.26	8.05	\$ 163,985.26	\$ 0.00
CMTS Florida, LLC				
<i>Inspection services</i>	\$ 210,000.00	10.31	\$ 122,436.00	\$ 0.00
Registe Sliger Engineering, Inc.				
<i>Structural design</i>	\$ 9,898.58	0.49	\$ 8,017.85	\$ 0.00
PBS&J (Design Lead)				
<i>Design</i>	\$ 1,523,957.66	74.79	\$ 1,516,039.16	\$ 35,855.00
<hr/>				
Total Design Contract:	\$ 2,037,600.00	100.00%	\$ 1,905,708.27	\$ 35,855.00

Design MBE Goal:	\$ 315,828.00	15.50%
Design MBE to Date:	\$ 371,669.11	19.50%

E1 - CAPITAL CIRCLE SE – TRAM RD TO CONNIE DR

M.Inc. Contract including COT Water Utility Additional Work

Construction Subconsultant Participation:	Contract Amt	% of Design Contract	Expended To Date	FY To Date
Ganes & Son Striping <i>Striping</i>	\$ 863,382.92	2.48	\$ 866,123.72	\$ 145,551.18
Construction Support Southeast <i>Construction Support</i>	\$ 1,694,000.00	4.86	\$ 1,325,247.83	\$ 25,437.08
All American Ford <i>Vehicles</i>	\$ 223,761.19	0.64	\$ 223,761.19	\$ 0.00
Ingram Signalization <i>Signal Installation</i>	\$ 2,371,960.00	6.81	\$ 2,015,044.14	\$ 1,113,494.40
Greenways of America <i>Landscaping</i>	\$ 1,400,000.00	4.02	\$ 1,594,973.51	\$ 513,444.16
Hale Contracting <i>Construction Support</i>	\$ 150,000.00	0.43	\$ 219,390.00	\$ 0.00
Florida Developer <i>Construction Support</i>	\$ 175,000.00	0.50	\$ 374,744.00	\$ 0.00
Terry's Trucking <i>Hauling</i>	\$ 1,339,859.08	3.85	\$ 1,339,859.08	\$ 0.00
M Inc. <i>Prime Contractor</i>	\$ 26,619,221.85	76.41	\$ 24,434,913.02	\$ 3,215,724.71
<hr/>				
Total Construction Contract:	\$ 34,837,185.04	100.00%	\$ 32,394,056.49	\$ 5,013,651.53

Construction MBE Goal:	\$ 7,315,808.86	21.00%
Construction MBE to Date:	\$ 7,959,143.47	24.57%

M. Inc. Contract Excluding COT Water Utility Additional Work

Total Construction Contract:
 \$29,624,360.73

Const. Invoiced to Date: \$26,841,761.09

Construction MBE Goal:	\$ 6,221,115.75	21.00%
Construction MBE to Date:	7,658,336.47	28.53%

E1 - CAPITAL CIRCLE SE – TRAM RD TO CONNIE DR

Project Status:

Construction of the project is near completion. Asphalt correction work and paving of Friction Course is complete and painted pavement markings are ready for thermoplastic pavement markings application.

Construction of SouthWood ponds near Segment 3 is complete and landscaping of the ponds is near completion. All drainage ponds are complete and correction of deficient landscaping items is in progress.

Work on placement of COT Water Utility sanitary sewer, waterline, re-use water line, and storm drainage system is complete and manhole covers adjustment to final elevations is also complete. Installation of street lighting poles is now complete and work on pedestrian traffic signals is in progress. Opening of Orange Avenue east extension is expected soon. (this is not part of the E1 Project)

Landscaping work on the whole project is substantially complete. Replacement of deficient landscaping items after winter season is in progress. The DRB Meeting was held on April 29, 2008.

Activities Since Last Period:

1. The Design-Build Team completed paving of Friction Course on crossroads and median openings
2. Completed painting pavement markings on the project and began work on stamped asphalt
3. Blueprint continued ROW and maintenance transfer activities (to FDOT)
4. Continued installation of pedestrian traffic signals at intersections.
5. The DB Team continued to address items from deficiency list
6. Completed manhole covers adjustment to final grade and the COT Water/Sewer work.
7. Continued work on Final Estimate
8. The DB Team continued landscaping of SouthWood ponds near Segment 3

Planned Activities for Next Period:

1. Blueprint to continue the process of ROW and maintenance transfer to FDOT
2. Complete pedestrian signals installation at all intersections
3. Complete landscaping of the Segment 3 ponds
4. Open east extension of Orange Avenue and activate traffic signals at intersection with CCSE
5. Complete stamped asphalt and thermoplastic pavement markings
6. Complete work on deficiency list items
7. Conduct Ribbon Cutting Ceremony

E1 - CAPITAL CIRCLE SE – TRAM RD TO CONNIE DR

Significant Issues and Resolutions:

ISSUE

Right-of-way issue with COT Electric Utility (30' COT Electric Utility/Blueprint ROW overlap, north of Blair Stone Road to north of Monday Road).

RESOLUTION

COT Electric Utility indicated that Blueprint can obtain the 30' strip of ROW from COT Electric in fee simple, subject to granting the 30' utility easement to COT Electric on the same strip of ROW. COT Electric Utility would not be responsible for any transmission line relocations within this easement in the future. Blueprint is in process of preparing legal and survey documents for acquisition of the 30' strip of ROW and granting an easement to COT Electric.

CCSE – Interpretive Sign at Rest Area



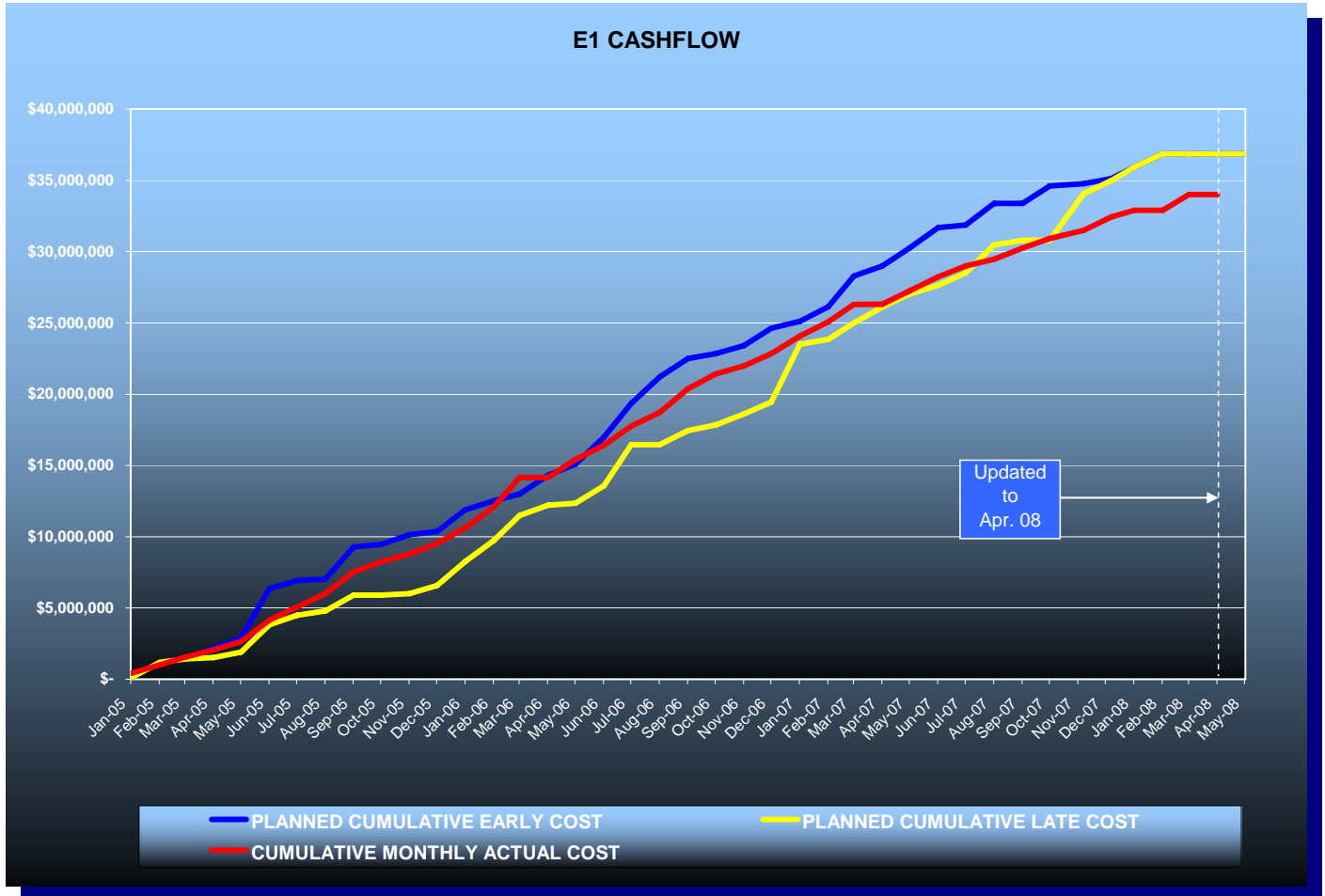
E1 - CAPITAL CIRCLE SE – TRAM RD TO CONNIE DR

CCSE – Placing Friction Course

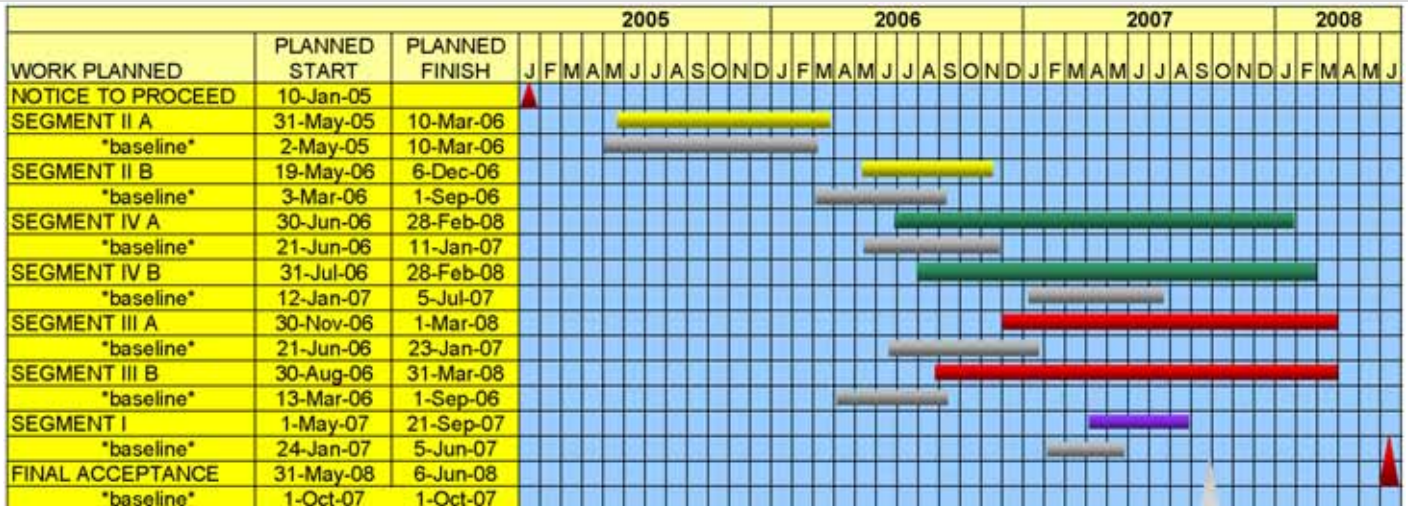


E1 - CAPITAL CIRCLE SE – TRAM RD TO CONNIE DR

DB Team Financial Summary of Planned vs. Actual Cost



Schedule



E1 - CAPITAL CIRCLE SE – TRAM RD TO CONNIE DR

Right-Of-Way Status Report:

CLOSED - (IN POSSESSION)	46*
AGREEMENTS SECURED BUT NOT CLOSED	0
DONATION	14
NEGOTIATING/PREPARING FOR SUIT	0
TOTAL PARCELS ON PROJECT	60

* One parcel was acquired by Order of Taking and still is in suit.

C2 - CAPITAL CASCADE TRAIL –SEGMENT 2 DESIGN

Project Description:

Within the Capital Cascade Trail, Segment 2 is from Lafayette Street to South Monroe Street.

Project Personnel:

Blueprint 2000:	Planning Manager:	David Bright
	Project Manager:	Gary Phillips
Genesis:	Project Manager:	Mark Llewellyn

Contract Cost & Schedule Status - Agreement No. 533/Authorization LOA - As of 5/12/2008

Contract Commencement:	30May06
Contract Completion:	30Oct08
Percent of Work Performed:	85.0%
Original Contract Amount:	\$ 2,399,652.27
Executed Supplemental Agreements:	\$ 1,105,479.33
Pending Supplemental Agreements:	\$ 0.00
Current Contract Amount:	\$ 3,505,131.60
Invoiced to Date:	\$ 2,816,152.12
Remaining Contract Amount:	\$ 688,979.48
Percent of Contract Amount Complete:	80.3%
Original Contract Time:	519 Days
Contract Time Extensions:	243 Days
Current Contract Time:	762 Days
Contract Time Expended:	713 Days
Contract Time Remaining:	49 Days
Percent Contract Time Expended:	93.6%

Schedule Milestones:

Letter of Authorization	30May06
Submit Design Project Schedule	15Jun06
Workshop #1: Program Formation	27Jul06
Workshop #2: Design Selection	14Sep06
Plan Submittal - 50%	19Oct07
Plan Submittal - 90%	24Jun08
All deliverables completed	27Nov08

C2 - CAPITAL CASCADE TRAIL – SEGMENT 2 DESIGN

Design Subconsultant Participation:	Contract Amt	% of Design Contract	Expended To Date	FY To Date
Archaeological Consultants Inc. <i>Archaeological Services</i>	\$ 33,910.84	0.97	\$ 32,068.67	\$ 2,103.25
Environmental and Geotechnical Specialist <i>Geotechnical</i>	\$ 283,204.89	8.08	\$ 223,633.93	\$ 28,562.75
Akin Associates Architects <i>Architectural</i>	\$ 165,153.38	4.71	\$ 107,515.67	\$ 99,042.38
Moore Bass <i>Land Planning</i>	\$ 4,659.91	0.13	\$ 4,456.16	\$ 0.00
Uzzell Advertising <i>Public Relations</i>	\$ 15,562.61	0.44	\$ 14,062.61	\$ 0.00
Carr, Lynch, Sandell <i>Park Design</i>	\$ 559,705.00	15.97	\$ 318,739.40	\$ 70,719.12
Jennings Environmental <i>Environmental</i>	\$ 34,800.00	0.99	\$ 20,856.78	\$ 3,514.95
Pinnacle Engineering Group <i>MEP</i>	\$ 118,367.72	3.38	\$ 66,771.41	\$ 50,426.00
CDM <i>Stormwater</i>	\$ 155,114.00	4.43	\$ 112,043.88	\$ 17,557.96
Genesis Group <i>Prime</i>	\$ 2,015,172.01	57.49	\$ 1,844,397.02	\$ 546,668.31
PBS&J <i>Water Quality</i>	\$ 32,478.00	0.93	\$ 0.00	\$ 0.00
Garcia Bridge Engineers <i>Bridge Design</i>	\$ 87,003.24	2.48	\$ 71,606.59	\$ 67,380.37
<hr/>				
Total Design Contract:	\$ 3,505,131.60	100.00%	\$ 2,816,152.12	\$ 885,975.09

Design MBE Goal:	\$ 543,295.40	15.50%
Design MBE to Date:	\$ 453,343.63	16.10%

****Please Note: Carr, Lynch and Sandell's contract amount is not contained in the MBE calculation.**

C2 - CAPITAL CASCADE TRAIL – SEGMENT 2 DESIGN

Project Status:

Letter of Authorization #5 and #6 were executed on March 9 and May 30, 2006, respectively. The two LOAs have been combined under Segment 2 Design and Permitting task for a total cost of \$2,399,652.27. Supplemental Agreement #1 was executed on September 18, 2007 for a total of \$1,105,479.33. The new total contact amount is \$3,505,131.60

Activities Since Last Period:

1. In coordination with DEP, URS has met with local officials and has assembled and reviewed documents related to the Cascade Park City remediation project
2. Updated the TCC and CAC on CCT segment 2 dog park, Veteran's Memorial, and required Permitting Variances
3. Completed field review with COT Electric of existing facilities and relocation plan
4. Meeting between Blueprint 2000, Genesis, and City stormwater was held to address all the stormwater management issues (FEMA approach, alum injection, trash racks)
5. The Concept Water and Sewer Plan was re-submitted to the City water utilities
6. Water Management District has determined the project will be permitted through FDEP
7. The EIA was re-submitted to Growth Management based on review comments
8. Met with Marketing/fundraising group twice to discuss strategies and donations
9. Wilderness Graphics Conceptual Sign Plan was submitted and will be reviewed by design team
10. Met with RMPK to discuss developing strategic funding plan for Cascade Park

Planned Activities for Next Period:

1. Develop a conceptual approach for the institutional control/restrictive covenant (IC/RC) management for the project
2. Meet with FDEP Brownfield Section to review and evaluate the possibility of entering into a Brownfield Site Rehabilitation Agreement (BSRA); viable and cost effective option for Blueprint to capture tax credits and other financial incentives
3. Final selection of the re-designed Cascade Park restroom will be chosen
4. Re-calibrated SWMM model will be reviewed and approved, final hydraulic design will be initiated
5. Variance application will be submitted to Growth Management for review and approval by City Commission
6. Revise Alum Injection Study based on review comments from COT and BP 2000
7. Complete survey of park patrons related to park facilities including restroom design
8. COT Electric will provide cost estimate to BP 2000 of relocated overhead and underground utilities.
9. Meeting will be scheduled with COT Electric at the end of May to review park design, utility relocation, park lighting and costs

C2 - CAPITAL CASCADE TRAIL – SEGMENT 2 DESIGN

Significant Issues and Resolutions:

ISSUE

LOMR/CLOMR Schedule:

RESOLUTION

A possible solution is to move directly to the CLOMR submittal for Segment 2 design which could save 9 months or more in the project schedule.

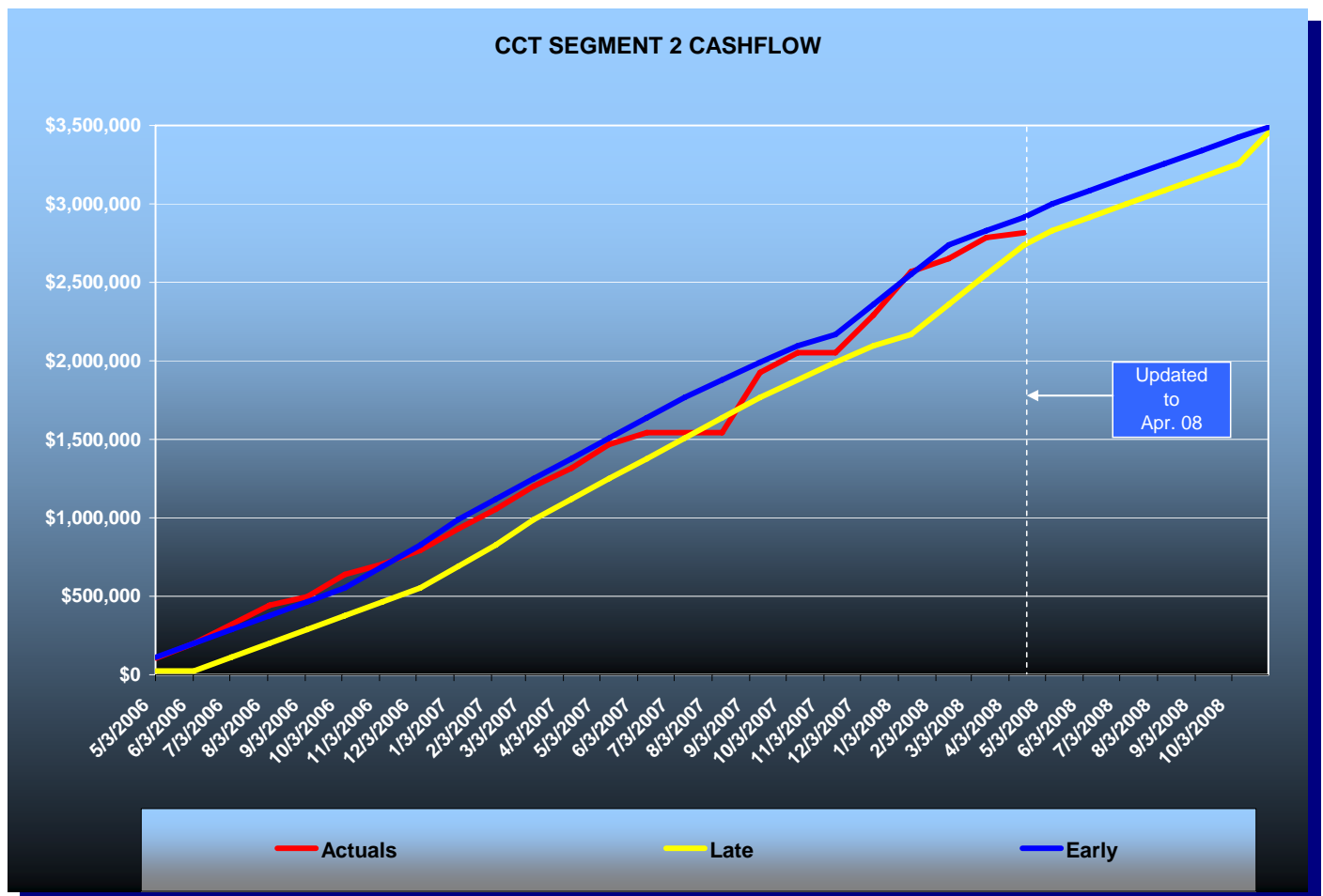
ISSUE

Contamination in Lower and Middle Park Sections

RESOLUTION

Engineering barriers demarcating the location of contaminated areas will be impacted by the park design and need to be addressed during current negotiations with EPA and DEP. URS is preparing a plan to assist blueprint in assessing the contamination at the site.

Contract Financial Summary of Planned Vs. Actual Costs



C3 & C4 - CAPITAL CASCADE TRAIL – SEGMENT 3 AND 4 DESIGN

Project Personnel:

Blueprint 2000:	Engineering Manager:	Jim Shepherd
	Project Manager:	Gary Phillips
Kimley-Horn Assoc:	Project Manager:	Ward Miller

Project Status:

Pursuant to Agenda Item #19 of the September 17, 2007, Intergovernmental Agency (IA) meeting the Board authorized the Intergovernmental Management Committee (IMC) to execute a contract with Kimley-Horn and Associates, Inc. (KLH) to complete the design and permitting phase for Capital Cascade Trail: Segments 3 and 4 at a budget not to exceed \$5,740,320 (including contingency).

Blueprint 2000 has prepared a contract with Kimley-Horn which is currently being reviewed by the IMC. The project design has been broken into consecutive phases that will be individually approved using Letters of Authorization (LOAs). The first Letter of Authorization will be for Phase 1A (total cost of \$1,125,524.00) which includes the following major tasks:

Phase 1A

- Survey – topo, utilities
- Utilities – conflicts, coordination
- Geotechnical, if needed
- Field sub-consultant coordination
- Environmental – NFI, field assessments, wetland delineations
- Optional – Water Quality Sampling Program
- Permitability assessment
- Hydraulic modeling – model construction, finalize existing conditions
- Investigate additional storage sites potential

Schedule Milestones:

Scope, Fee Proposal and Audit Package submitted (3 week review)	3/07/08
Scope Discussion and Contract Negotiations begin (3 week review)	3/24/08
Negotiations completed (6 week contract review, execution)	4/11/08
IMC Approval	5/19/08
Contract Executed	5/26/08
Letter of Authorization/Notice to Proceed received	5/30/08

MAHAN DRIVE/US 90 – DEMPSEY MAYO ROAD TO I-10 (TIER 2 BLUEPRINT PROJECT)

Project Description:

This project is the reconstruction of the existing two-lane rural roadway to a four-lane urban roadway with bike lanes and sidewalks. The design is being performed by a consultant under FDOT's direction.

Activities Since Last Period:

1. Survey: additional survey completed, signed and sealed for TCE at the Tallahassee RV Park and submitted to FDOT.
2. Utilities: JPA TSP's included plan sheets and diagrams and therefore removed from spec package and not included with final plans.
3. Misc. Structure Plans: submitted final plans/project DVD/spec CD on 5/02/08.
4. Roadway Plans: submitted final plans/project DVD/spec CD on 5/02/08.
5. Drainage Design: design variation for drift clearance approved 4/15/08. Re-submitted Leon Co permit on 4/22/08.
6. Environmental: Approved FDEP dredge & fill permit received 8/23/07. Approved FDEP stormwater permits received 9/25/07 & 10/25/07. Later for utilization of new pond design instead of the GPI Steward Pond. Leon Co permit submitted on 1/22/08; revised submitted on 4/22/08.
7. Lighting Justification: lighting plans to be prepared by COT.
8. Signalization Plans: Phase IV (100%) plans submitted on 3/03/08.
9. Signing and Pavement Making Plans: Phase IV (100%) plans submitted on 3/03/08.
10. Traffic Study: queue lengths determined for turn lanes.
11. Community Awareness Plan: public meeting was held at 5:00 PM EST on 4/19/07 at Capital City Christian Church.
12. Geotechnical: EGS submitted all required geotechnical reports.
13. Bridge Plans: FDOT providing structural plans.

Planned Activities for Next Period:

1. Survey: Right of Entry needed for driveway at Lafayette Presbyterian Church
2. Utilities: JPA's (COT Water and Sewer) to revise plans and TSP's if applicable. FDOT reviewing COT project DVD.
3. Misc. Structure Plans: Respond to comments if applicable.
4. Roadway Plans: LPA to respond to comments and incorporate as necessary.
5. Drainage Design: LPA to address Leon Co permit comments if applicable.
6. Environmental: LPA to address Leon Co permit comments if applicable.
7. Lighting Justification: None
8. Signalization Plans: Respond to comments if applicable.
9. Signing and Pavement Marking Plans: Respond to comments if applicable.
10. Traffic Study: None
11. Community Awareness Plan: None
12. Geotechnical: Respond to comments if applicable.
13. Bridge Plans: Respond to comments if applicable. FDOT has reviewed and amended DVD. Provided copy to LPA

**MAHAN DRIVE/US 90 – DEMPSEY MAYO ROAD TO I-10
(TIER 2 BLUEPRINT PROJECT)**

Landscaping for this project has been eliminated. This will have an impact on the Leon County Permit as to address tree debit/credits. An agreement will need to be reached by all parties involved to properly address the issue to satisfy all.

The action items resolved as of the last Monthly Progress Report (#17) include:

1. Design Variation for Drift Clearance was approved on 4/15/08
2. Responses to 100% review comments submitted on 4/9/08
3. Leon County Permit re-submitted on 4/22/08
4. Lafayette Church contacts provided to gain Right-of-Entry
5. Final Plans submitted on 5/2/08

Action Item List for this month as follows:

Description

Responsible Party

1. Re-submit Leon County Permit
2. Right-of-Entry for driveway at Lafayette Church

Ed Ringe, LPA
LPA/FDOT

ACRONYMN GLOSSARY

ACOE	Army Corp of Engineers
CAC	Citizens Advisory Committee
CDM	Camp, Dresser & McKee Inc.
CEI	Construction Engineering & Inspection
CLOMR	Conditional Letter of Map Revision
CLS	Carr, Lynch & Sandell
COT	City of Tallahassee
CR	Community Representative
CRCDD	Capital Region Community Development District
CRTPA	Capital Region Transportation Planning Agency
DB	Design-Build
DMS	Department of Management Services
DRB	Dispute Resolution Board
EIA	Environmental Impact Assessment
EIS	Environmental Impact Study
EMP	Environmental Management Permit
ERP	Environmental Resource Permit
ETD	Earned to Date
ETDM	Efficient Transportation Decision Making
FCT	Florida Communities Trust
FDEP	Florida Department of Environmental Protection
FDOT	Florida Department of Transportation
FHWA	Federal Highway Administration
FWC	Florida Fish & Wildlife Conservation Commission
FY	Fiscal Year (For BLUEPRINT 2000, October to September)
GEC	General Engineering Consultant
GM	Growth Management
IA	Intergovernmental Agency

ACRONYMN GLOSSARY

IFB	Invitation For Bid
ITE	Institute of Transportation Engineers
JPA	Joint Participation Agreement
LDCA	Location Design Concept Approval
LOA	Letter of Authorization
LOMR	Letter of Map Revision
MBE	Minority Business Enterprise
MOT	Maintenance of Traffic
MSE	Mechanically Stabilized Earthwall
NFI	Natural Features Inventory
NTP	Notice to Proceed
NFWFMD	Northwest Florida Water Management District
OT	Order of Taking
PD&E	Project Development and Environment
ROW	Right-of-Way
SFMP	Stormwater Facility Management Plan
SHPO	State Historic Preservation Officer
SOS	Scope of Services
SUE	Subsurface Utility Excavation
TCC	Technical Coordinating Committee
TIITF	Trustees of the Internal Improvement Trust Fund
UAO	Utility Agency Owner
USFS	United States Forest Service
USFWS	US Fish and Wildlife Service
VE	Value Engineering
YTD	Year to Date