

TABLE OF CONTENTS

I. Monthly Progress Reports

	<u>Page</u>
GEC – General Engineering Consultant	1
GEC – Public Involvement	5
N1 - Capital Circle NW – I-10 to US 90	6
N2 - Capital Circle NW/SW – SR 371 (Orange Avenue) to US 90	13
W1 - Capital Circle SW – Crawfordville Road to SR 20	18
E3 - Capital Circle SE – Woodville Hwy to Crawfordville Road.....	22
E2 - Capital Circle SE – Woodville Highway to Tram Road	26
E1 - Capital Circle SE – Tram Road to Connie Drive	30
C2 - Capital Cascade Trail –Segment 2 Design.....	38
Mahan Drive/US 90 – Dempsey Mayo Road to I-10 (Tier 2 Blueprint Project).....	43
Other	44

GEC – GENERAL ENGINEERING CONSULTANT

Project Description:

General Engineering Consultant Contract for the Blueprint Intergovernmental Agency. The LPA Group Incorporated is the Prime Consultant with Jacobs Civil, Incorporated as the major subconsultant. Twelve additional subconsultants, seven of which are MBE firms, make up the LPA/Jacobs Blueprint GEC Management Team.

Key Personnel:

Program Manager: Bill Little - Jacobs
Design Manager: Marek Romanowski - The LPA Group

Contract Cost & Schedule Status – Contract 597

Original Contract Amount:	\$	7,494,493.00
Fiscal Year Re-Authorization:	\$	4,525,519.00
Executed Supplemental Agreements:	\$	0.00
Pending Supplemental Agreements:	\$	0.00
Current Contract Amount:	\$	12,020,012.00
Invoiced to Date:	\$	8,733,554.90
Remaining Contract Amount:	\$	3,286,457.10
Percent of Contract Amount Complete:		72.7%

GEC – GENERAL ENGINEERING CONSULTANT

Subconsultant Participation:	Contract Amt	% of GEC Contract	ETD	YTD
Moore Bass Consulting <i>Stormwater & Landscaping</i>	\$ 170,677.00	1.42	\$ 82,024.43	\$ 13,648.00
Pope Environmental <i>Environmental Services</i>	\$ 211,276.00	1.76	\$ 138,690.00	\$ 13,687.50
OLH International <i>Program Controls</i>	\$ 1,363,231.00	11.34	\$ 1,253,265.66	\$ 134,198.41
Katherine Beck Consulting <i>Government Relations</i>	\$ 45,000.00	0.37	\$ 26,542.44	\$ 5,700.00
Quest Corporation of America <i>Public Involvement</i>	\$ 592,959.00	4.93	\$ 376,080.96	\$ 81,612.46
Uzzell Advertising <i>Public Relations, Web Maint.</i>	\$ 217,405.00	1.81	\$ 259,040.96	\$ 59,214.00
Welch & Ward Architects <i>Architecture, Recreation Facilities</i>	\$ 0.00	0.00	\$ 0.00	\$ 0.00
THC Right-of-Way Services, Inc. <i>R/W appraisal and acquisition</i>	\$ 2,379,149.00	19.79	\$ 1,295,563.63	\$ 502,951.20
Berryman & Henigar <i>Survey and mapping</i>	\$ 326,406.00	2.72	\$ 132,995.09	\$ 4,861.22
Weigal - Veasey <i>Property Appraisal</i>	\$ 0.00	0.00	\$ 0.00	\$ 0.00
Williams Earth Sciences <i>Geotechnical Services</i>	\$ 0.00	0.00	\$ 4,286.78	\$ 0.00
Allen Nobles & Associates <i>Survey</i>	\$ 0.00	0.00	\$ 73,726.00	\$ 0.00
THE LPA GROUP (PRIME) <i>Prime Consultant</i>	\$ 3,444,733.00	28.66	\$ 2,921,102.87	\$ 565,126.94
JACOBS (PRIME SUB) <i>Prime Subconsultant</i>	\$ 3,269,176.00	27.20	\$ 2,170,236.08	\$ 534,174.49
<hr/>				
Total Contract:	\$ 12,020,012.00	100.00%	\$ 8,733,554.90	\$ 1,915,174.22

MBE Goal:	\$ 1,863,101.86	15.50%
MBE to Date:	\$ 2,135,644.45	24.45%

GEC – GENERAL ENGINEERING CONSULTANT

Activities Since Last Period:

1. Attended regular meetings concerning E1-CCSE
2. Attended meeting with COT Growth Management on CCT Segment 2 permitting
3. Updated concept plan for N1 - Regional Pond Trail
4. Attended regular FDOT Leon County Construction Coordination Meeting
5. Continued coordination meetings on CCT-Segment 2 Design
6. Begin Supplemental Agreement for remainder of E1 Segment 3 Pond construction
7. Continued coordination with St. Joe and COT on E2-CCSE issues
8. Continued coordination on N2-CCNW/SW Leon County GM, LCSD
9. Finalized MOU City Water/Sewer work for E2-CCSE
10. Executed grant with Fish/Wildlife for N1-CCNW for plants
11. Received approval from FDOT central office regarding parking issues for CCT Segment 2
12. Continued coordination of N1-CCNW landscape project with FDOT
13. Began negotiations for Supplemental Agreement with Lochner on N2-CCNW/SW
14. Attended FDOT Design Conference
15. Continued pre-contract activities for E2-CCSE

Planned Activities for Next Period:

1. Continue coordination with St. Joe on Segment 3 ponds - stockpile locations for E1-CCSE
2. Continue assistance with N1-CCNW
3. Finalize Supplemental Agreement with Lochner to complete design on N2-CCNW/SW
4. Execute contract for Design-Build for E2-CCSE
5. Continue coordination for Mahan Drive/US 90 Project
6. Develop JPA with COT and St. Joe Company on E2 ponds

Significant Issues and Resolutions:

ISSUE

E1-CCSE Stormwater Facilities Master Plan

RESOLUTION

Permit issued. Continue to coordinate with St. Joe Company on stockpile locations.

ISSUE

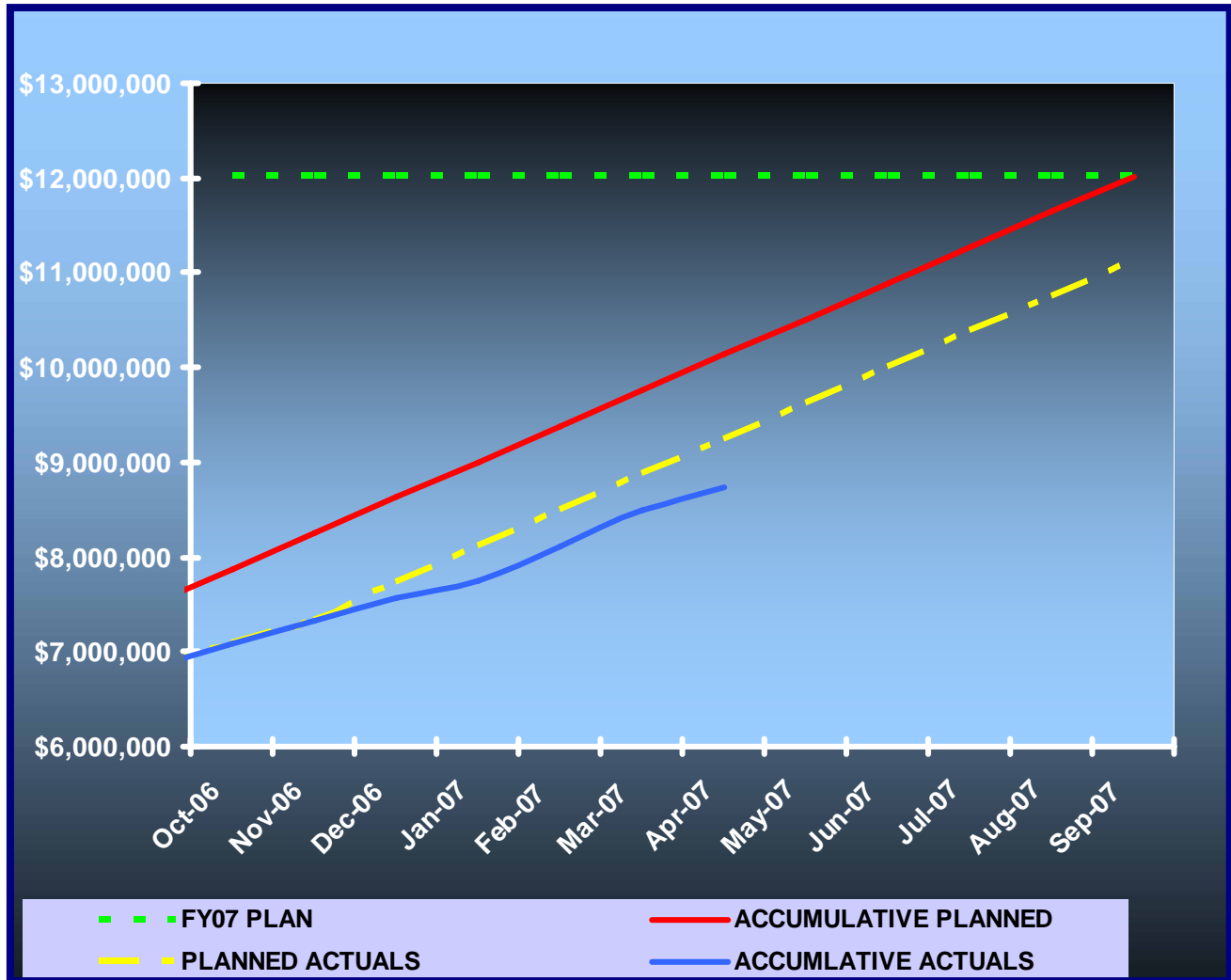
Permitting issues associated with Design-Build Team elimination of retaining wall.

RESOLUTION

Facilitating permit modification activities on Design-Build Team's behalf.

GEC – GENERAL ENGINEERING CONSULTANT

GEC Contract Financial Summary of Planned Vs. Actual Costs – FISCAL YEAR 2007



GEC – PUBLIC INVOLVEMENT

Activities Since Last Period:

1. Organized and held Community Representative Meeting # 6 for W1-CCSW
2. Continued to organize Corridor Concepts Charrette Meeting scheduled for May 10 & 12, 2007 for W1-CCSW
3. Continued Web Page review and restructure coordination with Web Master
4. Updated and maintained ACT Database for each project
5. Attended two E-1 CEI Meetings
6. Attended two N-1 CEI Meetings
7. Organized and held check ceremony for Booth II property
8. Prepared presentations for Hartung and Noblin Coldwell Banker Realty
9. Attended Public Meeting for US 90/Mahan
10. Prepared and distributed news release for Booth II check ceremony
11. Began organizing Community Workshop for N2-CCNW/SW
12. Responded to public requests for information regarding Blueprint projects
13. Compiled information and newspaper clippings for project workbooks
14. Prepared Monthly Progress Report
15. Prepared Presentation for Monthly Progress Report
16. Prepared IA Agenda Item for N1-CCNW

Planned Activities for Next Period:

1. Continue to organize and hold Corridor Concepts Charrette for W1-CCSW
2. Organize and hold Agency Concepts Charrette follow-up for W1-CCSW
3. Attend TCC Meeting
4. Attend CAC Meeting
5. Continue to organize and hold Community Workshop for N1-CCNW/SW
6. Attend I A Meeting
7. Organize and hold Partnering Meeting for E2-CCSE
8. Begin organizing Public Meeting for E3-CCSE
9. Organize and hold Public Information Meeting for 60% design for E2-CCSE
10. Prepare Monthly Progress Report
11. Prepare Presentation for Monthly Progress Report
12. Continue to respond to public requests for information on Blueprint projects

N1 - CAPITAL CIRCLE NW – I-10 TO US 90

Project Description:

The proposed 1.991-mile roadway project (FPID: 219722-1) consists of upgrading the existing undivided rural facility to a six-lane divided urban (curb and gutter) facility. Upgrades to the West Tennessee, Tharpe, Hartsfield and Commonwealth intersections will also be included. The purpose of the roadway improvement project is to increase the capacity and safety of the existing highway. The roadway project was designed, let and constructed by the Florida Department of Transportation, with advance funding provided by the Blueprint 2000 Intergovernmental Agency.

CCNW – Looking South Commonwealth Boulevard Intersection



N1 - CAPITAL CIRCLE NW - I-10 TO US 90

MONTHLY PROJECT STATUS REPORT						
Week Ending 05/05/2007						
PROJECT ADMINISTRATION INFORMATION						
FINANCIAL PROJECT NO.:	219722-1-52-01 & 02			RESIDENT ENGINEER:	Steve Martin, P.E.	
CONTRACT NO.:	T3154			PROJECT ADMINISTRATOR:	Jerry McClure	
FEDERAL AID NO.:	N/A			CONTRACTOR:	M of Tallahassee, Inc.	
ORIGINAL CONTRACT AMOUNT (A) Bid:	\$25,462,923.43			CURRENT CONTRACT AMOUNT:	\$25,589,410.64	
COUNTY:	LEON			DESIGN FIRM	FDOT Roadway Design	
DESCRIPTION:	SR 263 (Capital Circle NW) from a Pt S of SR 10 (US90/W Tennessee St) to the SR 8 (I-10) West ramp					
CONTRACT TIME SUMMARY			PROGRESS SUMMARY		CURRENT	PREVIOUS
ORIGINAL DAYS	825		PLANNED	71.19%		67.80%
WEATHER	30		ACTUAL	80.38%		77.68%
GRANTED (S.A.)	0		CONTRACT TIME USED	68.77%		65.50%
GRANTED (F.S.A.)	0		EXPLANATION:			
GRANTED (OTHER)	0					
TOTAL CONTRACT	855					
DAYS USED	588		DATE SUMMARY			
TOTAL REMAINING	267		CONTRACT EXECUTED	8/15/2005		
SUSPENSION DAYS	0		NOTICE TO PROCEED	9/14/2005		
PENDING DAYS	0		CONTRACT START DATE	9/26/2005		
			DATE WORK STARTED	9/26/2005		
NUMBER OF AVAILABLE WORK DAYS THAT CONTRACTOR ELECTED TO PERFORM NO WORK	0		ANTICIPATED FINAL ACCEPT.	12/28/2007		
			CONTRACT TIME EXPIRATION	12/29/2007		
GRANTED DAYS SUMMARY						
STATUS	REASON			NUMBER OF DAYS		
Approved	Weather Days Granted by Weather Letter No. 3			3		
Approved	Weather Days Granted by Weather Letter No. 4			4		
Approved	Weather Days Granted by Weather Letter No. 5			2		
Approved	Weather Days Granted by Weather Letter No. 6			1		
Approved	Weather Days Granted by Weather Letter No. 8			4		
Approved	Weather Days Granted by Weather Letter No. 10			4		
Approved	Weather Days Granted by Weather Letter No. 13			4		
Approved	Weather Days Granted by Weather Letter No. 15			3		
Approved	Weather Days Granted by Weather Letter No. 16			3		
Approved	Weather Days Granted by Weather Letter No. 17			2		
TOTAL NUMBER OF DAYS						30
SUPPLEMENTAL AGREEMENT SUMMARY						
SA #	# DAYS	Sub. Date	Exe. Date	Status	Reason/Description	Amount
999-25-01	0	5/8/2006	5/30/2006	Approved	Additional Erosion Control Measures	\$1,868.45
999-25-02	0	6/5/2006	6/13/2006	Approved	Add'l Pay Items for Removable Work Zone Pavement Markings.	\$43,430.00
999-25-03	0	7/13/2006	7/17/2006	Approved	Temporary Drainage Structures & Pipe	\$33,580.00
999-25-04	0	7/14/2006	7/17/2006	Approved	Relocation of Double-Post Sign	\$2,453.00
999-25-07	0	3/12/2007	3/21/2007	Approved	Removal of Existing Box Culvert	\$22,979.49
006	0	8/1/2006	7/21/2006	Approved	July 2005 Asphalt Specification Change	-\$23,382.06
009	0	9/7/2006	9/25/2006	Approved	Unilateral Pymt. - Add'l MOT	\$19,238.72
008	0	9/14/2006	10/3/2006	Approved	RWZPM's	\$20,921.80
012	0	1/8/2007	1/30/2007	Approved	Additional Water & Sewer Utilities	\$21,005.00
013	0	1/6/2007	1/29/2007	Approved	Base Group 9 - Limerock	-\$132,971.25
016	0	3/6/2007	3/6/2007	Approved	Type 1 Underdrain	\$56,000.00
017	0	3/15/2007	3/13/2007	Approved	Contingency Supplemental Agreement	\$150,000.00
018	0	4/4/2007	3/23/2007	Approved	Add'l Sewer Services - COT - @ Carroll's Boot Country	\$15,675.00
Total Supplemental Agreement Amount-to-Date						\$230,798.15

N1 - CAPITAL CIRCLE NW - I-10 TO US 90

CCNW @ I-10 Interchange Looking South



N1 - CAPITAL CIRCLE NW – I-10 TO US 90

**CCNW Northbound Traffic in Temporary Detour Pattern
Approaching Commonwealth Boulevard and I-10**



N1 - CAPITAL CIRCLE NW – I-10 TO US 90

CCNW Regional Stormwater Pond #1 with Aquatic Plants Installed



N1 - CAPITAL CIRCLE NW – I-10 TO US 90

Project Status:

As of May 7th, 2007: (next Monthly Progress Payment cutoff is 5/20/07)

588 of 855 Total Contract Days have been used (855 Total Days include 30 Weather Days granted to date);

Planned Progress = 71.19%

Actual Progress = 80.38%

Contract Time used = 68.77%

Contract Executed on 8/15/05;

Notice To Proceed on 9/14/05;

Contract Start Date on 9/26/05;

Anticipated Final Acceptance = 12/28/07 (*)

Contract Time expiration = 12/29/07(*)

(*) The Contractor is ahead of schedule and is pursuing an early-finish incentive contract bonus, and is hoping to complete the project in July/August of 2007.

Original Contract Amount = \$25,462,923.43

Current Contract Amount = \$25,589,410.64

Amount Paid to Date = \$20,417,285.54 (thru 4/29/07, next Monthly Estimate 5/20/07)

N1 - CAPITAL CIRCLE NW – I-10 TO US 90

Right-Of-Way Status Report:

CLOSED - (IN POSSESSION)	100
AGREEMENTS SECURED BUT NOT CLOSED	21
DONATION	4
NEGOTIATING/PREPARING FOR SUIT	0
TOTAL PARCELS ON PROJECT	125

As of March 2007 FDOT reported:

1. Right of Way cost expended so far is approximately \$44,800,000.
2. There are 21 parcels remaining to be settled through mediation.
3. The total Right of Way cost is estimated to be \$47,831,058.

N2 - CAPITAL CIRCLE NW/SW – SR 371 (ORANGE AVE.) TO US 90

Project Description:

The Expanded Project Development and Environment (PD&E) Study limits for this 2.9 mile project extend from Orange Avenue (SR 371) to Tennessee Street (US 90/SR 10). This project also includes the preparation of approximately 60% design plans.

Project Personnel:

Blueprint 2000:	Project Manager:	Paul Hiers
H.W. Lochner:	Project Manager:	Hugh Williams

Contract Cost & Schedule Status - Agreement No. 772/Authorization 1 - As of 4/20/2007

Contract Commencement:	10May04
Contract Completion:	10May07
Percent of Work Performed:	76.3%
Original Contract Amount:	\$ 1,921,585.90
Executed Supplemental Agreements:	\$ 1,055,540.90
Pending Supplemental Agreements:	\$ 0.00
Current Contract Amount:	\$ 2,977,126.80
Invoiced to Date:	\$ 2,490,712.93
Remaining Contract Amount:	\$ 486,413.87
Percent of Contract Amount Complete:	83.7%
Original Contract Time:	1095 Days
Contract Time Extensions:	160 Days
Current Contract Time:	1255 Days
Contract Time Expended:	1075 Days
Contract Time Remaining:	180 Days
Percent Contract Time Expended:	85.7%

Schedule Milestones:

30% Roadway Plans	28Aug06
Final Environmental Documents	20Jun06
Final Preliminary Engineering Report	20Jun06
60% Roadway Plans	30Apr07
Draft ROW Maps	12Sep06
Final ROW Maps	30Apr07
Location Design Concept Approval (LDCA)	22Aug06
VE Complete	27Oct06

N2 - CAPITAL CIRCLE NW/SW – SR 371 (ORANGE AVE.) TO US 90

Design Subconsultant Participation:	Contract Amt	% of Design Contract	ETD	YTD
Environmental Geotechnical Specialists				
<i>Geotechnical</i>	\$ 444,860.75	14.94	\$ 249,466.49	\$ 192,535.31
Diversified Design & Drafting Services, Inc.				
<i>Survey and R/W Mapping</i>	\$ 556,954.64	18.71	\$ 566,754.28	\$ 377,467.19
Archaeological Consultants, Inc.				
<i>Cultural Resource Assessment</i>	\$ 19,588.27	0.66	\$ 10,399.79	\$ 0.00
HNTB				
<i>Traffic Analysis</i>	\$ 81,510.59	2.74	\$ 90,310.59	\$ 11,606.21
American Acquisition Group				
<i>Right of Way</i>	\$ 97,873.48	3.29	\$ 94,046.22	\$ 8,071.70
HW LOCHNER (PRIME)				
<i>Prime Consultant</i>	\$ 1,776,339.07	59.67	\$ 1,479,735.56	\$ 816,689.39
<hr/>				
Total Design Contract:	\$ 2,977,126.80	100.00%	\$ 2,490,712.93	\$ 1,406,369.80

Design MBE Goal:	\$ 461,454.65	15.50%
Design MBE to Date:	\$ 826,620.56	33.19%

Project Status:

Conducting Pond & Mitigation analysis and design
 60% Roadway Plans (Partial) Submitted May 10, 2007
 R/W Acquisition process on-going

Activities Since Last Period:

1. Pavement Design under review
2. Continues analysis and design of the pond and mitigation sites
3. Continued survey, geotechnical investigation
4. Continued development of 60% Roadway Plans (Partial)
5. Responding to Blueprint's review comments on the Bridge Hydraulics Report and Bridge Development Reports, and updated the documents. FDOT has not provided any review comments
6. Updated the Natural Features Inventory report based on review comments

N2 - CAPITAL CIRCLE NW/SW – SR 371 (ORANGE AVE.) TO US 90

Planned Activities for Next Period:

1. Respond to comments received on the Natural Features Inventory
2. Continue field work for geotechnical activities
3. Continue to assist with R/W acquisition
4. Finalize the Pavement Design
5. Continue the pond and mitigation design
6. Submit 60% Roadway Plans (Partial)
7. Submit revised roadway and pond R/W documents
8. Finalize and submit the BHR and BDRs

Significant Issues and Resolutions:

ISSUE

Regional Pond #1

Additional compensating treatment volume will be needed to cover from CSX RR to Shuler Rd.

RESOLUTION

Determining the treatment volume needed through coordination with DEP and County Growth Management

ISSUE

Access to Gibby Property

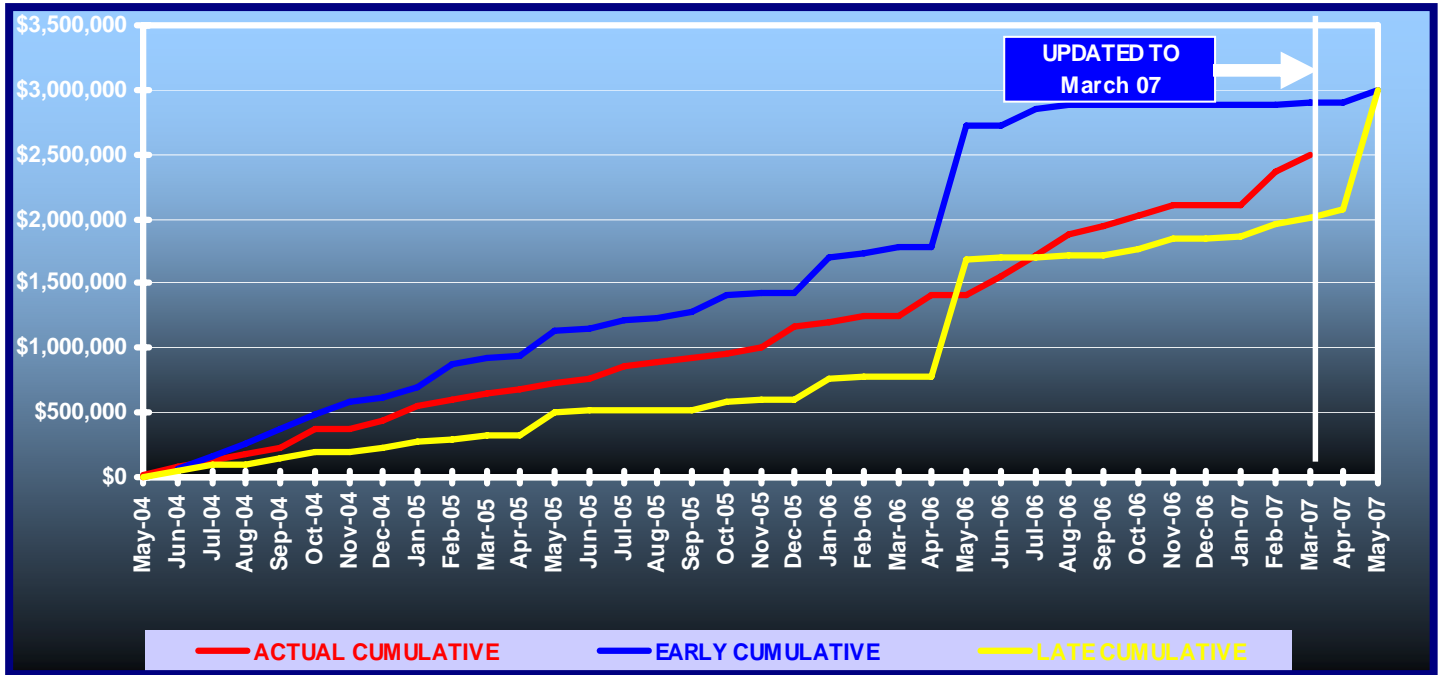
Mr. Gibby has challenged our exemption permit filed with DEP. The permit would allow us to take soil cores in the wetlands located just inside the Gibby property. DEP has requested that Blueprint file a full Dredge and Fill Permit.

RESOLUTION

A meeting with DEP is scheduled for May 22.

N2 - CAPITAL CIRCLE NW/SW – SR 371 (ORANGE AVE.) TO US 90

Contract Financial Summary of Planned Vs. Actual Costs



N2 - CAPITAL CIRCLE NW/SW – SR 371 (ORANGE AVE.) TO US 90

Right-Of-Way Status Report:

CLOSED - (IN POSSESSION)	0
AGREEMENTS SECURED BUT NOT CLOSED	0
DONATION	0
NEGOTIATING/PREPARING FOR SUIT	138
TOTAL PARCELS ON PROJECT	138

1. Blueprint has identified the former Broadmoor Estates Parcel as a parcel needed for a pond site. This parcel was acquired by the Tallahassee Regional Airport (TRA). TRA used City of Tallahassee and FAA Funds to acquire this parcel. If the parcel is sold or transferred from TRA, ownership (even to another city agency such as Blueprint) the parcel must be appraised and conveyed at fair market value. Funds received from the conveyance would reimburse the FAA. Appraisals by Blueprint and the City of Tallahassee have been completed. TRA has received FAA's concurrence to convey this parcel to Blueprint. The City of Tallahassee Real Estate Department has begun the process of getting City Council approval.
2. Blueprint received approval from the IA at the September 16, 2006 meeting to acquire 61 parcels. The process of obtaining appraisals on these parcels has begun. In approximately 60 - 90 days we should start to receive completed appraisals and we will begin negotiations with the property owners.
3. At the February 26, 2007 IA meeting Blueprint was authorized to begin the acquisition process for an additional 77 parcels.

W1 - CAPITAL CIRCLE SW – CRAWFORDVILLE ROAD TO SR 20

Project Description:

A Project Development and Environment (PD&E) Study of Capital Circle (SR 263) between Crawfordville Road (SR 61 US 319) and Blountstown Highway (SR 20) a distance of approximately 6.7 miles. The PD&E study is being conducted in accordance with Federal Highway Administration (FHWA), Blueprint 2000 Agency, and Florida Department of Transportation (FDOT) guidelines. The study evaluates alternative alignments as well as the existing alignment. Several viable alternatives are being developed and evaluated in order to address the project needs while taking into account the Blueprint 2000 & Beyond "Project Definitions Report", prepared by the Economic and Environmental Consensus Committee in 1999, and the Lake Bradford Sector Plan, conducted by the Tallahassee/Leon County Planning Department.

Project Personnel:

Blueprint 2000:	Planning Manager:	Dave Bright
	Project Manager:	Paul Hiers
Kimley-Horn & Assoc.:	Project Manager:	Steve Godfrey

Contract Cost & Schedule Status - Agreement No. 1284/Authorization 1 - As of 4/30/2007

Contract Commencement:	22Aug06
Contract Completion:	22Aug09
Percent of Work Performed:	9.6%
Original Contract Amount:	\$ 2,672,271.68
Executed Supplemental Agreements:	\$ 0.00
Pending Supplemental Agreements:	\$ 0.00
Current Contract Amount:	\$ 2,672,271.68
Invoiced to Date:	\$ 587,412.01
Remaining Contract Amount:	\$ 2,084,859.67
Percent of Contract Amount Complete:	22.0%
Original Contract Time:	1096 Days
Contract Time Extensions:	0 Days
Current Contract Time:	1096 Days
Contract Time Expended:	251 Days
Contract Time Remaining:	845 Days
Percent Contract Time Expended:	22.9%

Schedule Milestones:

Consultant Selected	26May06
Study Begins	22Aug06
Agency Kick-off Meeting	19Oct06
Public Kick-off Meeting	19Oct06
Community Mini-Charrettes	15Jan07
Community Meeting	12Apr07
Corridor/Concepts Charrette	10May07
Alternatives Public Information Meeting	07Apr08
Preferred Alternative Public Meeting	10Dec08
Public Hearing	01Jun09

W1 - CAPITAL CIRCLE SW – CRAWFORDVILLE ROAD TO SR 20

Consultant Participation:	Contract Amt	% of Contract	ETD	YTD
Target Copy and Sign Printers <i>Printing</i>	\$ 30,000.00	1.12	\$ 13,252.93	\$ 13,252.93
Keystone Field Services <i>Relocation</i>	\$ 35,000.00	1.31	\$ 0.00	\$ 0.00
Environmental and Geotechnical Specialists <i>Geotech</i>	\$ 59,830.00	2.24	\$ 5,339.74	\$ 5,339.74
Diversified Design & Drafting Services <i>Survey</i>	\$ 127,874.94	4.79	\$ 0.00	\$ 0.00
StategyWise, LLC <i>Economic Development</i>	\$ 19,500.00	0.73	\$ 0.00	\$ 0.00
Hamilton Smith Assoc. <i>Traffic</i>	\$ 18,600.00	0.70	\$ 18,600.00	\$ 18,600.00
Registe, Sliger Engineering <i>Structures</i>	\$ 123,376.71	4.62	\$ 8,636.36	\$ 8,636.36
KIMLEY-HORN & ASSOC (PRIME) <i>Prime</i>	\$ 1,596,614.64	59.75	\$ 468,599.72	\$ 417,987.04
Dr. Wayson <i>Noise</i>	\$ 30,147.25	1.13	\$ 0.00	\$ 0.00
Hass Center <i>Economic Development</i>	\$ 37,200.00	1.39	\$ 0.00	\$ 0.00
Florida Acquisition & Appraisal <i>Appraisal/Acquisition</i>	\$ 235,804.91	8.82	\$ 5,836.65	\$ 5,836.65
Biological Research Assoc. <i>Water Quality</i>	\$ 105,815.50	3.96	\$ 24,490.50	\$ 24,490.50
Search, Inc <i>Cultural Resource/Archaeological</i>	\$ 53,826.73	2.01	\$ 0.00	\$ 0.00
Camp, Dresser & McKee <i>Drainage & Pond Design</i>	\$ 198,681.00	7.43	\$ 42,656.11	\$ 42,656.11
Total Contract:	\$ 2,672,271.68	100.00%	\$ 587,412.01	\$ 536,799.33

MBE Goal:	\$ 414,202.11	15.50%
MBE to Date:	\$ 45,829.03	7.80%

W1 - CAPITAL CIRCLE SW – CRAWFORDVILLE ROAD TO SR 20

Project Status:

Kimley-Horn and Associates began the Capital Circle Southwest PD&E study in late August, 2006. The Public and Agency Kickoff Meetings were conducted on October 19, 2006. Six Community Forum Meetings were conducted concluding with a Town Hall Meeting. Five Community Representatives meetings have been held through the month of April 2007. The Concept Charrette will be held on May 10th and 12th, 2007. The data collection phase has been completed and the preliminary analysis phase has begun.

Activities Since Last Period:

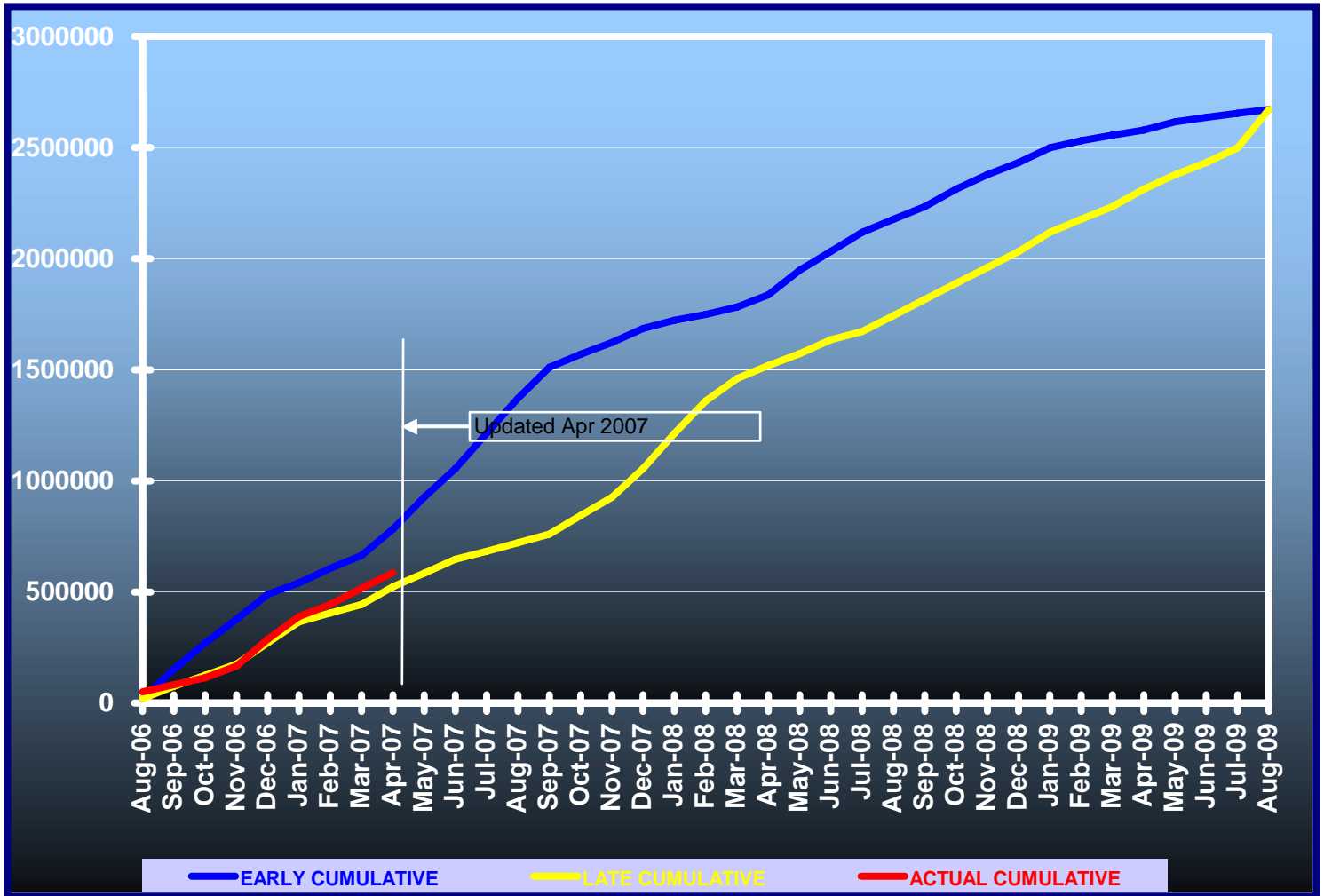
1. Continued work on draft evaluation criteria
2. Prepared for and attended the Town Hall meeting
3. Prepared for and attend the Community Representatives Meeting
4. Prepared final "Water Quality" white papers. Have now completed all four white papers
5. Reviewed ETAT, ETDM comments
6. Provided Web page updates
7. Preparing for Concepts Charrette
8. Began wetland assessment and monitoring of Black Swamp and Grassy Lake

Planned Activities for Next Period:

1. Prepare for and attend the next Community Representatives Meeting
2. Schedule coordination meeting with FHWA and FDOT D3
3. Finalize the evaluation criteria
4. Conduct the Concepts Charrette
5. Refine corridors from Concept Charrette
6. Continue developing the project typical section and design criteria
7. Begin Survey and Geotechnical activities
8. Begin identifying preliminary Stormwater treatment locations

W1 - CAPITAL CIRCLE SW – CRAWFORDVILLE ROAD TO SR 20

Contract Financial Summary of Planned Vs. Actual Costs



E3 - CAPITAL CIRCLE SE – WOODVILLE HWY TO CRAWFORDVILLE RD

Project Description:

This project proposes to widen approximately 1.53 miles of the existing two-lane Capital Circle SE from Woodville Highway to Crawfordville Road to an ultimate multi-lane urban facility.

FDOT Roadway ID: 55002000 SR 263 from MP 0.200 to MP 1.730.

Project Personnel:

Blueprint 2000:	Design Manager:	Marek Romanowski
	Project Manager:	Gary Phillips
URS Corporation:	Project Manager:	Chris Lovett

Contract Cost & Schedule Status - Agreement No. 1167/Authorization 1 - As of 5/9/2007

Contract Commencement:	02Feb06
Contract Completion:	12Sep07
Percent of Work Performed:	95.0%

Original Contract Amount:	\$	885,689.21
Executed Supplemental Agreements:	\$	49,905.00
Pending Supplemental Agreements:	\$	0.00
Current Contract Amount:	\$	935,594.21
Invoiced to Date:	\$	856,617.16
Remaining Contract Amount:	\$	78,977.05
Percent of Contract Amount Complete:		91.6%

Original Contract Time:	587 Days
Contract Time Extensions:	0 Days
Current Contract Time:	587 Days
Contract Time Expended:	461 Days
Contract Time Remaining:	126 Days
Percent Contract Time Expended:	78.5%

Schedule Milestones:

Selection of Design Consultant	16Aug05
IA authorizes Blueprint to execute Contract with Design Consultant	19Sep05
Contract and LOA#1 are executed	02Feb06
Submit Typical Section Package	06Mar06
Submit Pond Siting Report	05Jun06
Submit ROW Control Survey Maps	03Jul06
Submit Phase I Plans	24Oct06
Submit Pavement Design Package	02Nov06
Submit Phase II Plans	20Mar07
Submit Phase II ROW Maps	20Mar07
Revise and Finalize Phase II Plans	07May07
Submit Phase III (90%) ROW Maps	11Jun07
Submit Phase IV (100%) ROW Maps	09Jul07

E3 - CAPITAL CIRCLE SE – WOODVILLE HWY TO CRAWFORDVILLE RD

Design Subconsultant Participation:	Contract Amt	% of Design Contract	ETD	YTD
EGS Geotechnical	\$ 67,411.46	7.21	\$ 59,209.30	\$ 59,209.30
ACI Cultural Resource (Archaeological)	\$ 8,153.18	0.87	\$ 0.00	\$ 0.00
Mehta Survey	\$ 91,944.24	9.83	\$ 91,944.24	\$ 91,944.24
DRMP Survey and Mapping	\$ 204,310.03	21.84	\$ 155,559.10	\$ 155,559.10
URS (Prime) Design, Environmental, Signalization, Landscaping	\$ 563,775.30	60.26	\$ 549,904.52	\$ 549,904.52
<hr/>				
Total Design Contract:	\$ 935,594.21	100.00	\$ 856,617.16	\$ 856,617.16

Design MBE Goal:	\$ 145,017.10	15.50%
Design MBE to Date:	\$ 151,153.54	17.65%

Project Status:

Contract and Letter of Authorization was executed on February 2, 2006
 Part A - 60% design plans - total cost is \$935,594.21

Activities Since Last Period:

1. Finalizing E3 Video
2. Conducted Design Conference with Utility Agencies/Owners
3. Met with USFS to discuss potential mitigation measures for striped newt and gopher frog
4. Completed Traffic Counts and submitted Intersection Traffic Conditions Report at Crawfordville/Capital Circle Intersection
5. Re-submitted NFI to COT Growth Management for review
6. Completed model runs for ponds related to recovery period

Planned Activities for Next Period:

1. Respond to Phase II comments and revise plans as necessary
2. Submit E3 Video
3. Prepare exhibits/graphics to support 60% Design Public Meeting in late June or mid-July
4. Submit Phase III (90%) R/W Maps, legal descriptions and parcel sketches

E3 - CAPITAL CIRCLE SE – WOODVILLE HWY TO CRAWFORDVILLE RD

Significant Issues and Resolutions:

ISSUE

Roadway Improvement and Funding Options

RESOLUTION

Design Contract: Phase II (60%) Plans and Right-of-Way Maps will be completed the end of March 2007. Blueprint 2000 will stop the design at 60% and not authorize Part B of the Contract. This approach will allow Blueprint 2000 the ability to initiate right-of-way acquisition or move to a design-build contract, contingent upon available resources.

ISSUE

Flea Market Tract - Linear Pond Design

RESOLUTION

USFS Legislation (HR 5725) that would allow the USFS to sell the Flea Market Tract directly to a public or private entity was not acted upon by the 109th Congress. Blueprint was informed that this legislation must be "reintroduced" to the new 110th Congress and that this process was underway.

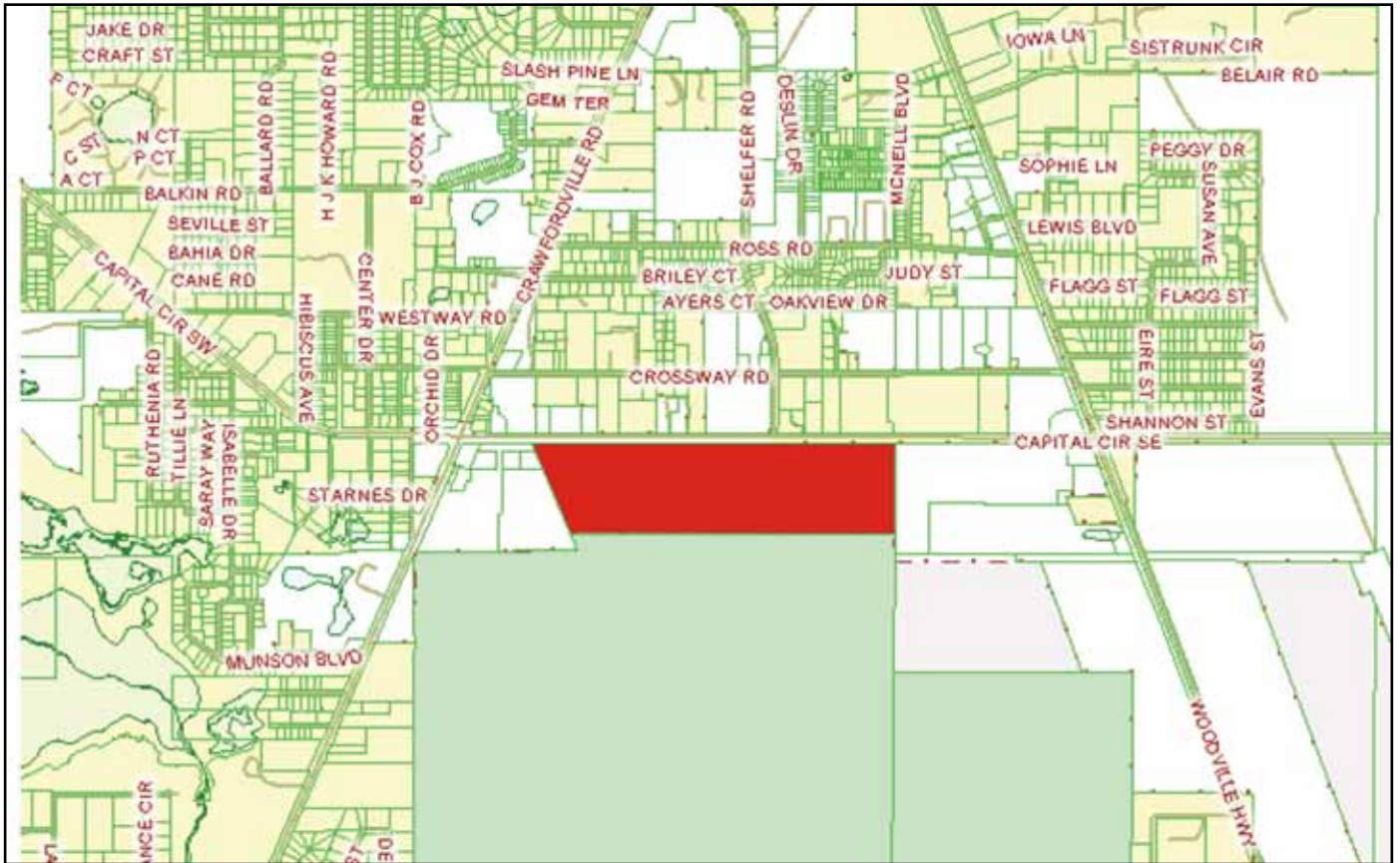
Blueprint met with USFS to discuss comments from their Biologist related to protecting the Striped Newt and Gopher Frog from the proposed stormwater ponds.

Schedule

WORK PLANNED	PLANNED START	PLANNED FINISH	2006												2007											
			J	F	M	A	M	J	J	A	S	O	N	D	J	F	M	A	M	J	J	A	S	O		
NOTICE TO PROCEED	2-Feb-06		▲																							
Topographic Survey	28-Feb-06	22-May-06	[Yellow bar]																							
Typical Section Package	6-Mar-06	21-Apr-06	[Grey bar]																							
Pond Siting Report	28-Feb-06	5-Jun-06	[Yellow bar]																							
Phase I Plans (30%)	9-May-06	13-Oct-06	[Grey bar]																							
Control Survey Maps	14-Mar-06	15-Dec-06	[Green bar]																							
Phase II Plans (60%)	15-Sep-06	30-Mar-07	[Grey bar]																							
Phase II ROW Maps	11-Aug-06	30-Mar-07	[Green bar]																							
Phase III Plans (90%)	21-Feb-07	17-Jun-07	[Grey bar]																							
Phase III ROW Maps	21-Feb-07	24-Jun-07	[Red bar]																							
Permit Application	7-Mar-07	24-Jul-07	[Grey bar]																							
Phase IV Plans (100%)	4-Jun-07	29-Aug-07	[Red bar]																							
Phase IV ROW Maps	4-Jun-07	13-Sep-07	[Grey bar]																							
Final Plans	16-Aug-07	31-Oct-07	[Purple bar]																							
Final ROW Maps	12-Sep-07	12-Nov-07	[Grey bar]																							

E3 - CAPITAL CIRCLE SE – WOODVILLE HWY TO CRAWFORDVILLE RD

Right-Of-Way Status Report:



USFS Legislation (HR 5725) that would allow the USFS to sell the Tract of land directly to a public or private entity was not acted upon by the 109th Congress. Blueprint was informed that this legislation must be "reintroduced" to the new 110th Congress and that this process was underway.

E2 - CAPITAL CIRCLE SE – WOODVILLE HIGHWAY TO TRAM ROAD

Project Personnel:

Blueprint 2000:	Engineering Manager:	Marek Romanowski
	Project Manager:	Doug Martin
Sandco Inc./Genesis:	Project Manager:	Bob Myrick
	Design PM:	Dave Snyder

Contract Cost & Schedule Status - Agreement No.

Blueprint 2000 staff is performing current activities.(DRMP Design Contract is closed)

Project Description:

This project proposes to widen approximately 2.2 miles of the existing two-lane Capital Circle SE from Woodville Highway to Tram Road to an ultimate six-lane facility, mileposts 0.0 to 2.12. In addition, a transitional segment west of Woodville Highway (SR 263 MP 0.0 to approximately MP 0.2).

Schedule Milestones:

Execute Contract	15May07
Partnering Meeting	

Project Status:

Issues regarding final adjustments to scope of services have been identified and efforts are being made to get them all resolved. The contract document is 100% complete and is being circulated for signatures.

Expected execution of Design-Build contract is the Mid May 2007.

Activities Since Last Period:

1. Worked contract adjustment issues prior to contract execution with Sandco/Genesis (Complete)
2. Resolved all outstanding contractually related issues (Complete)
3. Conducted workshop to complete initial setup for Expedition and Primavera (Sandco/Genesis) (Complete)

Planned Activities for Next Period:

1. Receive schedule from Sandco/Genesis 10 days after contract execution
2. Perform initial schedule review to establish project baseline
3. Pre-Construction Meeting
4. Partnering meeting
5. Negotiate Man hours for CE&I firm and execute Letter of Authorization for CE&I work
6. Establish timetable for regular design reviews
7. Execute contract with Sandco/Genesis

E2 - CAPITAL CIRCLE SE – WOODVILLE HIGHWAY TO TRAM ROAD

Significant Issues and Resolutions:

ISSUE

Traffic Signal at Lakes of San Marcos

The Traffic Signal at the intersection of the Lakes of San Marcos apartment complex and Woodville Highway must be installed by Camden Management as per FDOT directive. This signal will be temporary until such time Blueprint 2000 arrives for the reconstruction of the Woodville Highway intersection. At this time a permanent signal will be installed. Camden has agreed to fund \$168,471 toward this construction. Blueprint 2000 will pay for the remainder of \$196,433.

RESOLUTION

Issue resolved.

ISSUE

The COT Engineering Department requested price proposals for a permanently installed irrigation systems along the corridor of CCSE from Woodville Highway to Tram Road.

RESOLUTION

Blueprint 2000 requested, in the City's behalf, a price proposal from Sandco/Genesis. A price Proposal has been received. Subsequently Blueprint 2000 has asked for a more detailed price proposal which has been received and is currently under review by COT Engineering Dept. Issue will continue to be monitored and will result in a supplemental agreement for additional work.

E2 - CAPITAL CIRCLE SE – WOODVILLE HIGHWAY TO TRAM ROAD

Right-Of-Way Status Report:

CLOSED - (IN POSSESSION)	2
AGREEMENTS SECURED BUT NOT CLOSED	0
DONATION	6
NEGOTIATING/PREPARING FOR SUIT	17
TOTAL PARCELS ON PROJECT	25

This project has a total of 25 parcels.

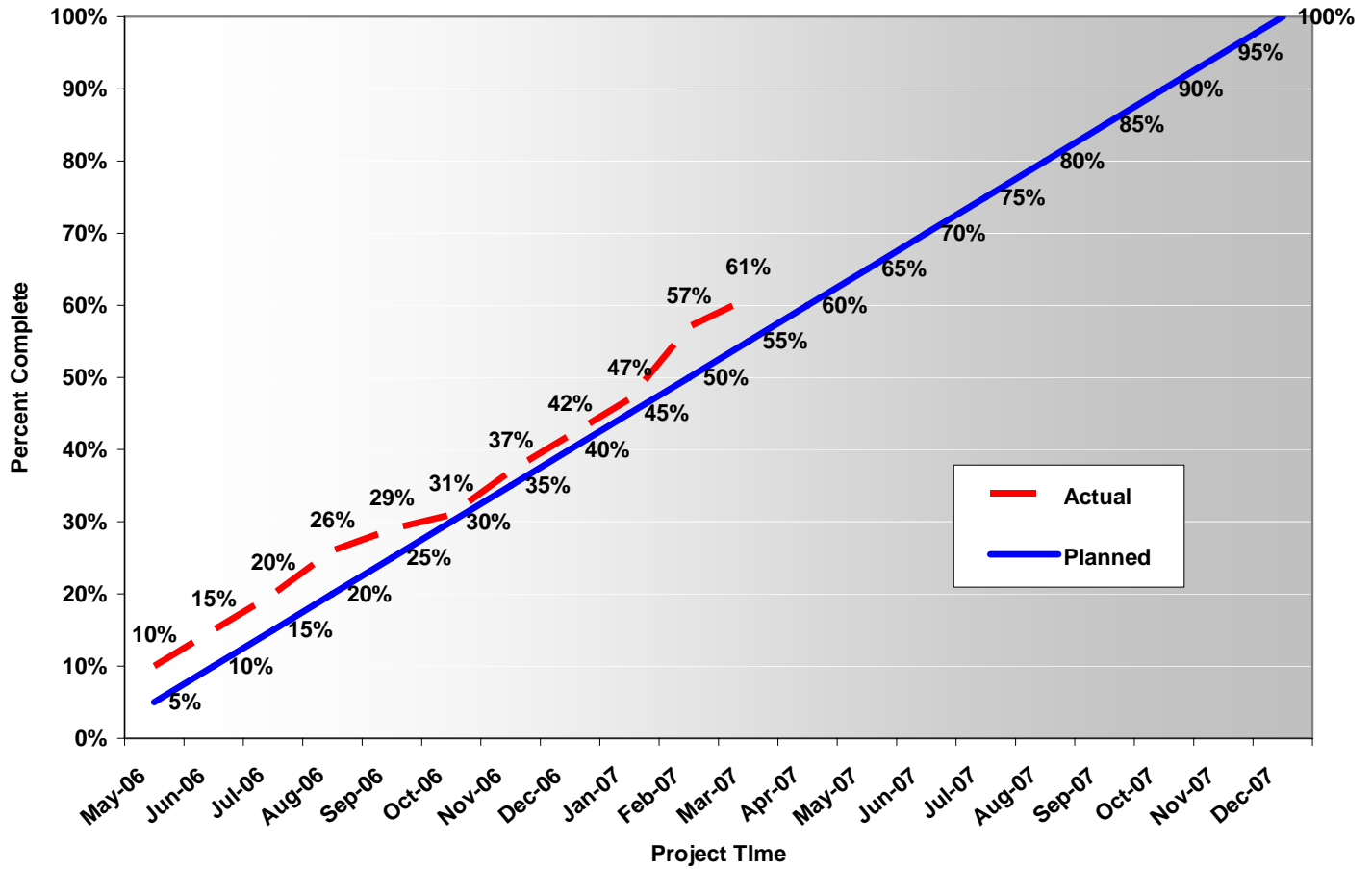
We expect seven (7) right of way donations and have received one (1); the remaining six (6) should be in hand within the next 60 days.

We have received twelve (12) parcel appraisals and review appraisals; and offers have been made on each; from this twelve (12); we have closed on two (2) parcels, and have agreements on two (2) parcels (closing within the next 45 days). Of the remaining eight (8) parcels we anticipate getting six (6) agreements within the next 45 days.

There are six (6) parcels awaiting completion of appraisals and review appraisals; these should be should be received in the next 60 days. Offers will be made on these remaining six (6) parcels as soon as possible.

E2 - CAPITAL CIRCLE SE – WOODVILLE HIGHWAY TO TRAM ROAD

**Right-of-Way Aquisition Effort
 Capital Circle Southeast**



E1 - CAPITAL CIRCLE SE – TRAM ROAD TO CONNIE DRIVE

Project Description:

The proposed 3.44-mile project along Capital Circle Southeast (US 319/SR261) extends from south of Tram Road to Connie Drive (milepost 1.931 and 5.371) in Leon County and includes expanding the existing two-lane undivided rural roadway to a six-lane divided urban (curb and gutter) facility. The purpose of the roadway improvement project is to increase the capacity and safety of the existing highway. New traffic signals, including ITS features, will be provided at six intersections: Tram Road, Shumard Oak Boulevard, Merchants Row Drive, Blair Stone Road, Orange Avenue and Old St. Augustine Road. The project also includes significant landscaping as well as pedestrian, bicycle and recreational amenities.

Project Personnel:

Blueprint 2000:	Program Manager:	Bill Little
	Project Manager:	Marek Romanowski
	Construction Manager:	Marcus Kelly
PBS&J:	Project Manager:	Steve Martin

Contract Cost & Schedule Status - As of 5/9/2007

Contract Commencement:	10Jan05
Contract Completion:	02Oct07
Percent of Work Performed:	71.9%
Original Contract Amount:	\$ 30,796,339.34
Executed Supplemental Agreements:	\$ 5,818,213.15
Pending Supplemental Agreements:	\$ 181,156.30
Current Contract Amount:	\$ 36,614,552.49
Invoiced to Date:	\$ 26,311,373.08
Remaining Contract Amount:	\$ 10,303,179.41
Percent of Contract Amount Complete:	71.9%
Original Contract Time:	995 Days
Contract Time Extensions:	151 Days
Current Contract Time:	1146 Days
Contract Time Expended:	849 Days
Contract Time Remaining:	297 Days
Percent Contract Time Expended:	74.1%

E1 - CAPITAL CIRCLE SE – TRAM RD TO CONNIE DR

Schedule Milestones:

Intergovernmental Agency (IA) Approval	20Sep04
Execute Contract	22Dec04
Notice to Proceed	10Jan05
Right of Way Acquisition, Phase 1	01May05
Right of Way Acquisition, Phase 2	01Sep06
60% Design Submission - Segment I	28Feb05
90% Design Submission - Segment II	15Apr05
Final Design Submission - Segment II	25Jul05
90% Design Submission - Segment IV	30Aug05
90% Design Submission - Segment III	05Oct05
90% Design Submission - Segment I	14Feb06
Final Design Submission - Segment IV	24May06
Final Design Submission - Segment III	15Aug06
Final Design Submission - Segment I	17May06
Contract Completion	25Feb08

Design Subconsultant Participation:	Contract Amt	% of Design Contract	ETD	YTD
Diversified Design & Drafting Services, Inc. <i>Design survey</i>	\$ 111,758.50	0.31	\$ 77,230.00	\$ 0.00
Allen Nobles & Associates, Inc. <i>Tree survey for permit application</i>	\$ 18,000.00	0.05	\$ 18,000.00	\$ 18,000.00
Environmental & Geotechnical Specialists, Inc. <i>Geotechnical design services</i>	\$ 163,985.26	0.45	\$ 163,985.26	\$ 2,677.26
CMTS Florida, LLC <i>Inspection services</i>	\$ 210,000.00	0.57	\$ 122,436.00	\$ 103,704.00
Registe Sliger Engineering, Inc. <i>Structural design</i>	\$ 9,898.58	0.03	\$ 8,017.85	\$ 6,137.12
PBS&J (Design Lead) <i>Design</i>	\$ 1,503,957.66	4.11	\$ 1,467,744.16	\$ 446,945.70
Total Design Contract:	\$ 2,017,600.00	5.52%	\$ 1,857,413.27	\$ 577,464.08

Design MBE Goal:	\$ 312,728.00	15.50%
Design MBE to Date:	\$ 371,669.11	20.01%

E1 - CAPITAL CIRCLE SE – TRAM RD TO CONNIE DR

CONSTRUCTION:

**M. Inc. Contract including COT Water
 Utility Additional Work**

Total Construction Contract:
 \$34,579,352.49

Const. Invoiced to Date: \$24,453,959.81
 Const. MBE Invoice to Date: \$4,091,665.21

Construction			
MBE Goal:	\$	7,261,664.02	21.00%
Construction			
MBE to Date:			16.73%

Please Note: The state-wide certified MBE contractor, 'Gator Boring' has been removed from the City of Tallahassee's list of locally certified MBE firms (as of 2005). This resulted in the Gator's original contract amount of \$329,372.20 being removed from the construction MBE participation amount.

M. Inc. Contract

Total Construction Contract:
 \$29,132,815.28

Const. Invoiced to Date: \$20,186,716.25
 Const. MBE Invoice to Date: \$4,091,665.21

Construction			
MBE Goal:	\$	6,117,891.21	21.00%
Construction			
MBE to Date:			20.27%



Segment 3 – SouthWood Pond 090 South



Segment 3 – Paving Operation

E1 - CAPITAL CIRCLE SE – TRAM RD TO CONNIE DR

Project Status:

Erosion Control and Clearing and Grubbing work is complete from Tram Road to Connie Drive on both sides of Capital Circle with the exception of the west side of CCSE between Barcelona Lane and Old St. Augustine Road. COT Utility relocation permit has been obtained for all Segments and all utility relocation work is complete on the project. The EMP conditional permit for Segment 2 was granted on October 31, 2005. Segment 2B EMP permit conditions have been satisfied and full permit for Segment 2 is in effect as of April 20, 2006. Curb and gutter and structural asphalt have been placed on CCSE between south of Tram Road and Merchants Row Boulevard. Concrete curb and gutter, basecourse and structural asphalt are complete on northbound lanes between Merchants Row Boulevard and Barcelona Lane. Southbound lanes in Segment 2 are partially constructed between Merchants Row Boulevard and Barcelona Lane, with the exception of Blair Stone Road intersection. Design of Segment 3 is complete and the final plans have been released for construction. The EMP permit for Segment 3 was issued on September 8, 2006 conditional upon permitting of SouthWood drainage ponds WD 90N, WD 90S and WD290. SouthWood obtained the required permit on 11/30/06. SouthWood ponds for Segment 3 excavation was started on March 5, 2007 and is in progress. Earthworks and some drainage installations on Segment 3 are in progress. Concrete curb and gutter and limerock base course have been placed on Segment 3 northbound lanes. Permit for Segment 4 was obtained on June 8, 2006 and final plans for that Segment were released for construction September 8, 2006. Work on Pond 11 in Segment 4 is complete. Grading and basecourse on Segment 4 northbound lanes are complete and structural asphalt has been placed on Segment 4 northbound lanes. Old St. Augustine Road east of CCSE was temporarily closed for 30 days on January 24, 2007. Construction of Old St. Augustine Road east of CCSE is complete to the top of structural asphalt. Traffic has been relocated onto northbound lanes of Segment 4 and grading work is in progress on southbound lanes between Connie Drive and Old St. Augustine Road.

Work on re-use water line installation is in progress. Placement of COT Water Utility potable waterline and storm drainage system is complete between Tram Road and Blair Stone Road. Curb and gutter and structural asphalt are complete on Tram Road on both sides of CCSE. No major erosion control, safety, or maintenance of traffic issues to date.

The temporary traffic signals have been installed at Merchants Row intersection, some temporary striping put down, and northbound traffic has been switched over to two final CCSE northbound lanes between Tram Road and north of Blair Stone on November 6th, 2006. Landscaping work between Tram Road to Blair Stone Road continues. The DRB Meeting has been held on April 17, 2007.

E1 - CAPITAL CIRCLE SE – TRAM RD TO CONNIE DR

Activities Since Last Period:

1. Coordinated design adjustments at Monday Street, Connie Drive and various driveways in Segments 3 and 4
2. Continued to coordinate design adjustments of Orange Avenue intersection with COT, SouthWood and DB Team
3. Reviewed proposals and requested revisions for temporary Blair Stone Road west of CCSE and Monday Street detours
4. The DB Team continued work on landscaping on Segments 1 and 2
5. Grading of the west side of southbound lanes between Merchants Row Boulevard and Barcelona Lane in Segment 2 continued
6. Grading, drainage, curb and gutter and placing of limerock base course are in progress on northbound lanes in Segment 3
7. Excavation of Segment 3 ponds continued

Planned Activities for Next Period:

1. Conduct design progress and CEI meetings
2. Complete testing and start installation of street lighting poles
3. Continue construction of the west side of south bound lanes in Segment 2 north of Merchants Row Boulevard
4. Prepare MOT plans and construction sequence for construction of the west side of Blair Stone Road Boulevard
5. Continue construction of embankment and drainage structures on the southbound lanes of Segments 3 and 4, north of Barcelona Lane
6. Finalize design of the embankment construction, drainage and MOT at Segment 4 ravine (in place of the MSE wall) and submit the proposal to Blueprint.
7. Continue excavation of Segment 3 ponds

Significant Issues and Resolutions:

ISSUE

1. Right-of-way and easement issues with COT Electric Utility (north of Monday Street).
2. Permitting - Segment 3.

RESOLUTION

Re. pt. 1: Blueprint needs to obtain roadway easement from COT Electric Utility to allow future access and maintenance of CCSE east embankment within COT Electric Utility ROW north of Monday Street.

Re. pt.2: EMP permit conditions for Segment 3 are being coordinated with SouthWood and COT. Interim drainage easement south of Tram Road was provided by SouthWood to facilitate EMP permit processing independently of the approval of SouthWood SFMP by the City. SouthWood submitted ponds for Segment 3 permit application to Growth Management and received their comments. The comments have been addressed and the application re-submitted to GM on 7/14/06. More comments were received from GM and were responded to by SouthWood. Responses to the comments and the updated permit application plans were re-submitted to GM on 11/13/06 the permit for the SouthWood ponds was obtained on 11/30/07. The JPA between SouthWood and Blueprint and the Supplemental Agreement between Blueprint and the Joint Venture was executed on 2/12/07 and construction of pond has been started.

E1 - CAPITAL CIRCLE SE – TRAM RD TO CONNIE DR

Segment 3 – Northbound Lanes Ready for Paving

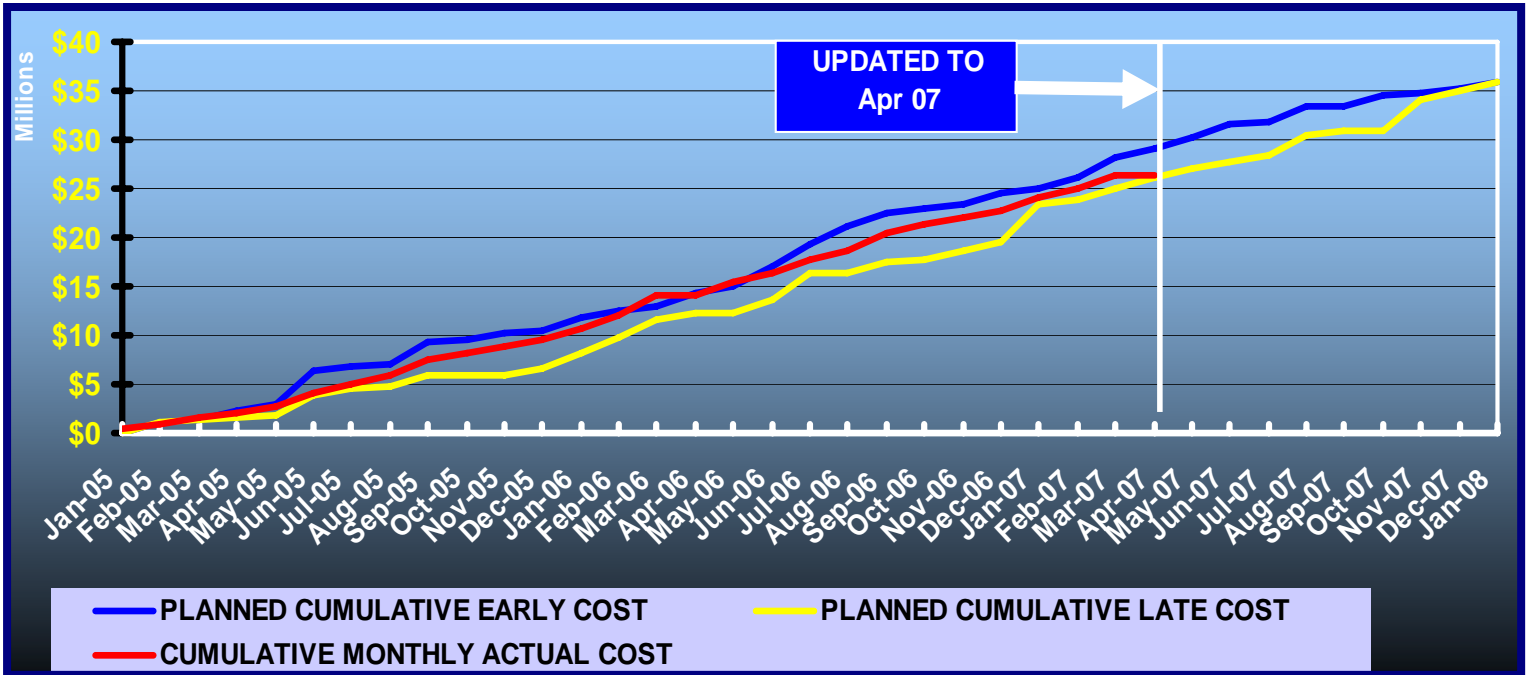


Segment 2 – Road Construction Along West Side of Southbound Lanes

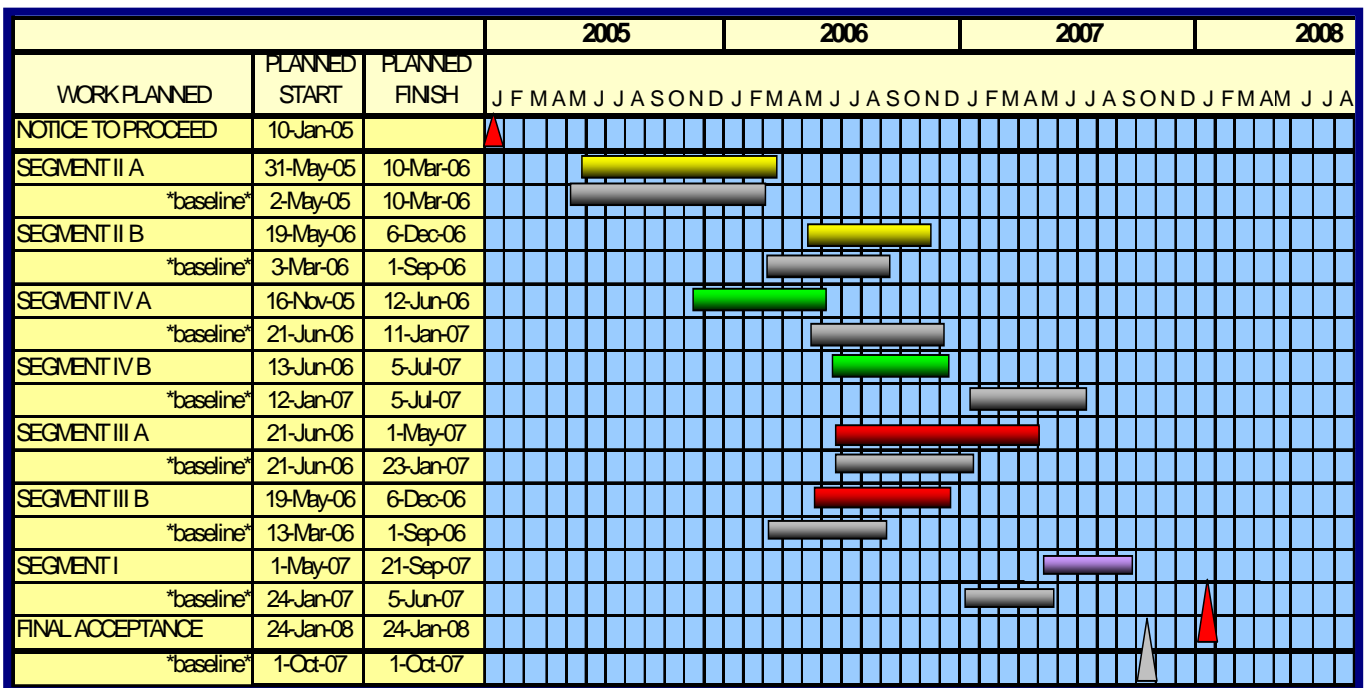


E1 - CAPITAL CIRCLE SE - TRAM RD TO CONNIE DR

DB Team Financial Summary of Planned vs. Actual Cost



Schedule



E1 - CAPITAL CIRCLE SE – TRAM RD TO CONNIE DR

Right-Of-Way Status Report:

CLOSED - (IN POSSESSION)	46*
AGREEMENTS SECURED BUT NOT CLOSED	0
DONATION	14
NEGOTIATING/PREPARING FOR SUIT	0
TOTAL PARCELS ON PROJECT	60

* One parcel was acquired by Order of Taking and still is in suit.

C2 - CAPITAL CASCADE TRAIL –SEGMENT 2 DESIGN

Project Description:

Within the Capital Cascade Trail, Segment 2 is from Lafayette Street to South Monroe Street.

Project Personnel:

Blueprint 2000:	David Bright:	Planning Manager
	Gary Phillips:	Project Manager
Genesis:		
	Mark Llewellyn:	Project Manager

Contract Cost & Schedule Status - Agreement No. 533/Authorization LOA - As of 5/9/2007

Contract Commencement:	30May06
Contract Completion:	31Oct07
Percent of Work Performed:	45.0%
Original Contract Amount:	\$ 2,399,652.27
Executed Supplemental Agreements:	\$ 0.00
Pending Supplemental Agreements:	\$ 0.00
Current Contract Amount:	\$ 2,399,652.27
Invoiced to Date:	\$ 1,201,533.86
Remaining Contract Amount:	\$ 1,198,118.41
Percent of Contract Amount Complete:	50.1%
Original Contract Time:	519 Days
Contract Time Extensions:	124 Days
Current Contract Time:	643 Days
Contract Time Expended:	344 Days
Contract Time Remaining:	299 Days
Percent Contract Time Expended:	53.5%

Schedule Milestones:

Letter of Authorization	30May06
Submit Design Project Schedule	15Jun06
Workshop #1: Program Formation	27Jul06
Workshop #2: Design Selection	14Sep06
Plan Submittal - 50%	31May07
Plan Submittal - 90%	27Sep07
All deliverables completed	03Mar08

C2 - CAPITAL CASCADE TRAIL – SEGMENT 2 DESIGN

Consultant Participation:	Contract Amt	% of Contract	ETD	YTD
Archaeological Consultants Inc. <i>Archaeological Services</i>	\$ 33,910.84	1.41	\$ 29,965.42	\$ 29,965.42
Environmental and Geotechnical Spec <i>Geotechnical</i>	\$ 207,652.55	8.65	\$ 31,288.61	\$ 31,288.61
Akin Associates Architects <i>Architectural</i>	\$ 143,002.37	5.96	\$ 13,793.29	\$ 13,793.29
Moore Bass <i>Land Planning</i>	\$ 36,148.00	1.51	\$ 4,456.16	\$ 4,456.16
Uzzell Advertising <i>Public Relations</i>	\$ 15,562.61	0.65	\$ 14,062.61	\$ 14,062.61
Carr, Lynch, Sandell <i>Park Design</i>	\$ 135,550.00	5.65	\$ 127,164.83	\$ 127,164.83
Jennings Environmental <i>Environmental</i>	\$ 34,800.00	1.45	\$ 11,995.83	\$ 11,995.83
Pinnacle Engineering Group <i>MEP</i>	\$ 72,048.91	3.00	\$ 7,843.74	\$ 7,843.74
CDM <i>Stormwater</i>	\$ 141,230.00	5.89	\$ 79,559.83	\$ 79,559.83
Genesis Group <i>Prime</i>	\$ 1,580,054.00	65.85	\$ 881,403.54	\$ 881,403.54
<hr/>				
Total Contract:	\$ 2,399,959.28	100.00%	\$ 1,201,533.86	\$ 1,201,533.86

MBE Goal:	\$ 371,993.69	15.50%
MBE to Date:	\$ 79,772.80	9.5%

****Please Note: Carr, Lynch and Sandell's contract amount is not contained in the MBE calculation.**

C2 - CAPITAL CASCADE TRAIL – SEGMENT 2 DESIGN

Project Status:

Letter of Authorization #5 and #6 were executed on March 9 and May 30, 2006, respectively. The two LOAs have been combined under Segment 2 Design and Permitting task for a total cost of \$2,399,652.27

Activities Since Last Period:

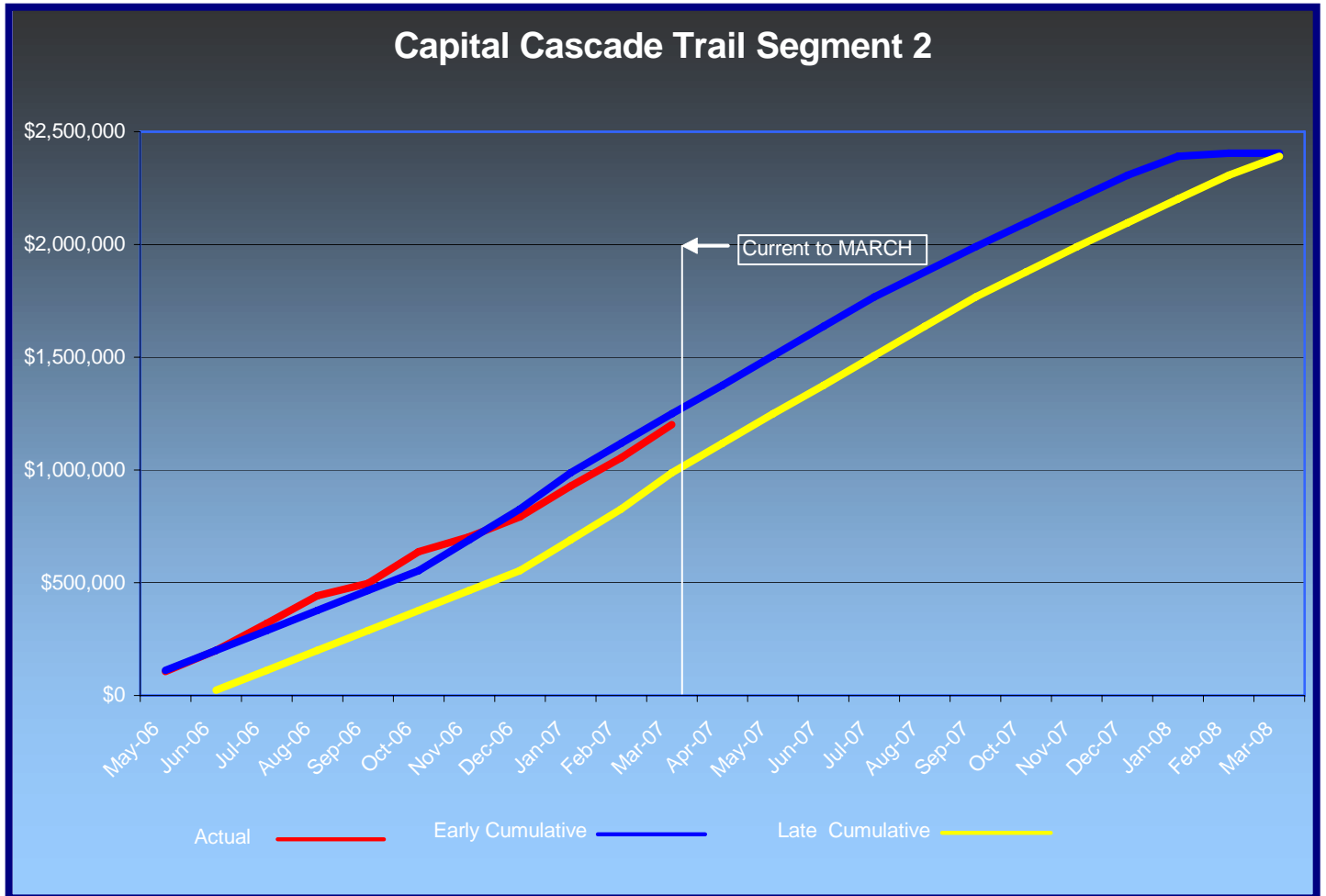
1. Continued to coordinate with UAOs on Utility Conflicts and various project alternatives
2. Determined slope and size for relocated sanitary sewer
3. Developed options along Bloxham Street for Historic Wall and met with SHPO on May 10th
4. Met with ACOE in Panama City to discuss permitting CCT and Segment 2
5. Met with COT Growth Management to discuss permitting CCT and "Major Roadway Improvements"
6. Completed right-of-way survey, legals and sketches to support TIITF lease and roadway abandonment
7. Met with John Harvey to discuss bicycle/pedestrian interconnectivity inside and adjacent to the park
8. Topographic survey review comments provided by Blueprint 2000 to Genesis
9. Responded to FDOT comments on Schematic Submittal and received "acceptance" letter from FDOT
10. Continued to evaluate by-pass culvert location and size
11. Developed Geophysical Report for Ponds located in Segment 3 and 4
12. Provided access to Suwannee Street Pump house which will be evaluated for potential use for pond augmentation
13. Identified problems with XP-SWMM model results and are currently evaluating options
14. Completed draft "Sequence of Construction" for the overall park
15. Met with Parks and Recreation on electric fixtures
16. Coordinated with COT on additional engineering controls located in AOC 4 and 5

Planned Activities for Next Period:

1. Continue coordination with project partners
2. Provide hydraulic justification for removing culverts at Beverly and Call Streets
3. FEMA submission scheduled for early June
4. Complete Draft Report for well augmentation and water chemistry
5. Submit revised set of plans (50%) and responses to CSX review comments on Schematic submittal
6. CDM has completed the post project model and has begun the floodway analysis
7. Evaluate Peak Stage in lower pond and effects downstream in Segment 3
8. Evaluate hydraulically, potential interim improvements in Segment 1
9. Submit Final Park Programming Report
10. Modify the design of Interactive Water Play Area and Restrooms to support larger number of patrons
11. Submit 50% Plans at the end of May
12. Supplemental Services request will be submitted, negotiated and approved, contingent upon IA review and approval in June
13. Review transmission lines clearance at dog park
14. Meeting scheduled for May 15 with Althemese Barnes and Commissioner Dailey to discuss design, funding for Smokey Hollow and Lake Hall School House

C2 - CAPITAL CASCADE TRAIL – SEGMENT 2 DESIGN

Financial Summary of Planned vs. Actual Cost



C2 - CAPITAL CASCADE TRAIL – SEGMENT 2 DESIGN

Right-Of-Way Status Report:

Capital Cascade Trail - Segment 2 - Blueprint is waiting on Genesis to provide legal descriptions and sketches to enter into a long-term lease Agreement with DEP for the use of land within the boundary of the Park.



MAHAN DRIVE/US 90 – DEMPSEY MAYO ROAD TO I-10 (TIER 2 BLUEPRINT PROJECT)

Project Description:

This project is the reconstruction of the existing two-lane rural roadway to a four-lane urban roadway with bike lanes and sidewalks. The design is being performed by a consultant under FDOT's direction.

Activities Since Last Period:

1. Survey: Initial work essentially completed and deliverables provided.
2. Geotechnical: Completing field work on the additional retaining walls and mast arm foundations.
3. Roadway Plans: The median opening was added back at Winery Way as well as modify the median opening at the Tallahassee RV Park to allow access from eastbound traffic.
4. Utilities: Utilities have provided verified vertical and horizontal (Vvh) locations and are currently under review.
5. Misc. Structure Plans: The design for mast arms will be performed, once the revised signalization sheets from Traffic Engineers have been developed
6. Drainage Design: Incorporated changes at Winery Way and RV Park.
7. NFI Report has been approved by COT Growth Management
8. Lighting Justification Report: The lighting plans to be included by COT
9. Community Awareness Plan: Public meeting was held on 4/19/07
10. Signalization Plans: Revising/finalizing the work on the signalization plans
11. Signing and Pavement Marking Plans: Revising/finalizing

Planned Activities for Next Period:

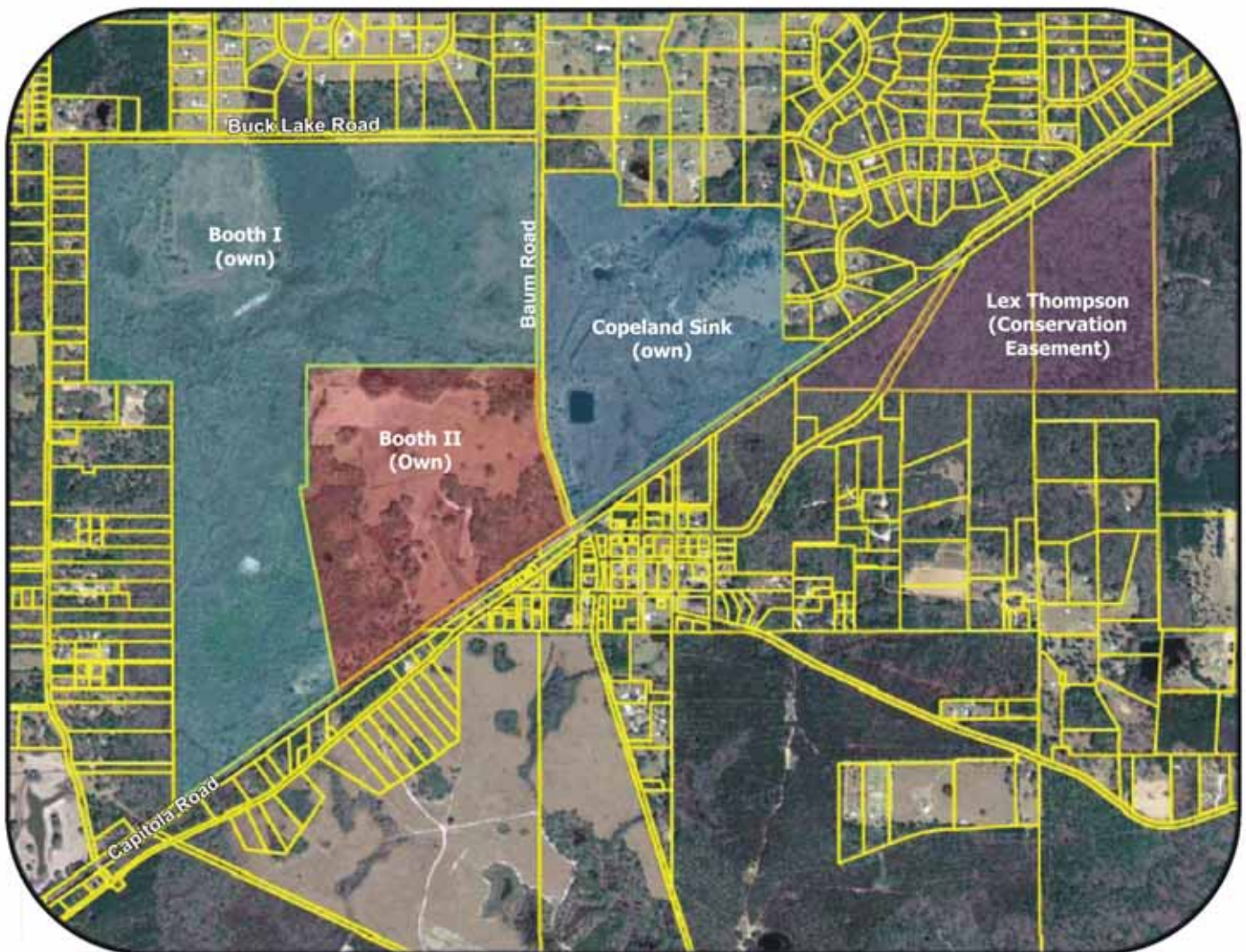
1. Continue surveying punch list including new construction at Thornton Road.
2. Geotech to provide Roadway Soils Report in May
3. Continue to address 60% review comments and proceed with 90% Plans.
4. Once Vvhs are received, conflicts with stormwater design will be identified and eliminated.
5. Finalize signalized intersection layout sheets
6. Prepare responses to comments received at Public Meeting
7. Bridge limits including rip-rap to be confirmed by FDOT

OTHER

Sensitive Land Acquisitions

In conjunction with the Florida Communities Trust (FCT), Blueprint closed on the acquisition of a 160 acre tract of land near the Headwaters of the St. Marks. This parcel is identified as "Booth II", and the closing occurred on February 23, 2007.

Headwaters of the St. Marks River



Booth II Check Ceremony, May 1, 2007

