

TABLE OF CONTENTS

I. Monthly Progress Reports

	<u>Page</u>
A. GEC Progress Report	1
B. Public Involvement	5
C. N1 - Capital Circle Northwest (US 90 to I-10)	6
D. N2 - Capital Circle Northwest/Southwest (US 90 to SR 20)	9
E. W1 - Capital Circle Southwest (Springhill to SR 20)	13
F. E3 - Capital Circle Southeast (Woodville to Crawfordville)	14
G. E2 - Capital Circle Southeast (Woodville to Tram)	18
H. E1 - Capital Circle Southeast (Tram to Connie)	21
I. C0 - Capital Cascade Trail Master Plan	29
J. C2 – Capital Cascade Trail Segment 2 Design	34

GEC – GENERAL ENGINEERING CONSULTANT

Project Description:

General Engineering Consultant Contract for the Blueprint Intergovernmental Agency. THE LPA GROUP INCORPORATED is the Prime Consultant with Jacobs Civil, Incorporated as the major subconsultant. Twelve additional subconsultants, seven of whom are MBE firms, make up the LPA/Jacob Blueprint GEC Management Team.

Key Personnel:

Program Manager: Jerry Oshesky - The LPA Group
 Engineering Manager: Bill Little - Jacobs

Contract Cost & Schedule Status – Contract 597

Original Contract Amount:	\$ 2,341,236.00
Fiscal Year Re-Authorization:	\$ 4,222,374.00
Executed Supplemental Agreements:	\$ 0.00
Pending Supplemental Agreements:	\$ 0.00
Current Contract Amount:	\$ 6,563,610.00
Invoiced to Date:	\$ 4,974,425.11
Remaining Contract Amount:	\$ 1,589,184.89
Percent of Contract Amount Complete:	75.8%

Project Status:

- ⇒ Third Bi-Annual GEC Progress Report Completed (3/17)
- ⇒ FY07 Authorizations in Process

GEC – GENERAL ENGINEERING CONSULTANT

Subconsultant Participation:	Contract Amt	% of GEC Contract	ETD	YTD
Moore Bass Consulting <i>Stormwater & Landscaping</i>	\$ 75,677.00	1.15	\$ 49,147.68	\$ 12,326.75
Pope Environmental <i>Environmental Services</i>	\$ 140,343.00	2.14	\$ 108,002.50	\$ 26,370.00
OLH International <i>Program Controls</i>	\$ 986,528.00	15.03	\$ 927,368.87	\$ 177,742.83
Katherine Beck Consulting <i>Government Relations</i>	\$ 25,000.00	0.38	\$ 15,341.70	\$ 2,300.00
Quest Corporation of America <i>Public Involvement</i>	\$ 267,959.00	4.08	\$ 210,341.06	\$ 15,029.70
Uzzell Advertising <i>Public Relations, Web Maint.</i>	\$ 132,405.00	2.02	\$ 146,082.60	\$ 57,818.16
Welch & Ward Architects <i>Architecture, Recreation Facilities</i>	\$ 8,000.00	0.12	\$ 0.00	\$ 0.00
THC Right-of-Way Services, Inc. <i>R/W appraisal and acquisition</i>	\$ 711,320.00	10.84	\$ 548,102.96	\$ 158,227.48
Berryman & Henigar <i>Survey and mapping</i>	\$ 93,055.00	1.42	\$ 70,957.44	\$ 26,162.10
Weigal - Veasey <i>Property Appraisal</i>	\$ 37,848.00	0.58	\$ 0.00	\$ 0.00
Williams Earth Sciences <i>Geotechnical Services</i>	\$ 28,024.00	0.43	\$ 4,286.78	\$ 0.00
Allen Nobles & Associates <i>Survey</i>	\$ 70,000.00	1.07	\$ 73,726.00	\$ 0.00
THE LPA GROUP (PRIME) <i>Prime Consultant</i>	\$ 2,123,008.00	32.35	\$ 1,633,635.06	\$ 434,119.77
JACOBS (PRIME SUB) <i>Prime Subconsultant</i>	\$ 1,864,443.00	28.41	\$ 1,188,129.45	\$ 312,142.12
<hr/>				
Total Contract:	\$ 6,563,610.00	100.02%	\$ 4,975,122.10	\$ 1,222,238.91

MBE Goal:	\$ 1,017,359.55	15.50%
MBE to Date:	\$ 1,456,284.41	29.27%

GEC – GENERAL ENGINEERING CONSULTANT

Activities Since Last Period:

1. Continued Coordination for CCSE (E1) Permitting
2. Assisted w/ staff hour estimate for CCT-C2
3. Coordinated w/FDOT for JPA's (E2, E3, N2, W1)
4. Regular Meetings with CCSE (E1) Contractor
5. Coordinated with US Forestry for Flea Market Tract
6. Continued Coordination w/ St. Joe for E2
7. Began IT Conversion
8. Participated in Project Field Review
9. Attended COT Legislation Day
10. Staff made Presentation to Tallahassee Area Utility Coordinating Committee (Bill Little)
11. Began Review of CCSW RFQ

Planned Activities for Next Period:

1. Coordination with SouthWood, CCSE
2. Continued Assistance with N1-CCNW
3. Continued active coordination with FDOT (incl JPA TBD), Mtg April 7
4. Implement Strategies for Blueprint Fund Leveraging
5. Planning for Blueprint Staff
6. Coordination for IT System Implementation
7. Implement Staff Transition Plan for New PM
8. Prepare for March Presentation to NWFTCA
9. Preparation for Potential IA Meeting
10. Assist with Tech Review for CCSW RFP

Significant Issues and Resolutions:

ISSUE

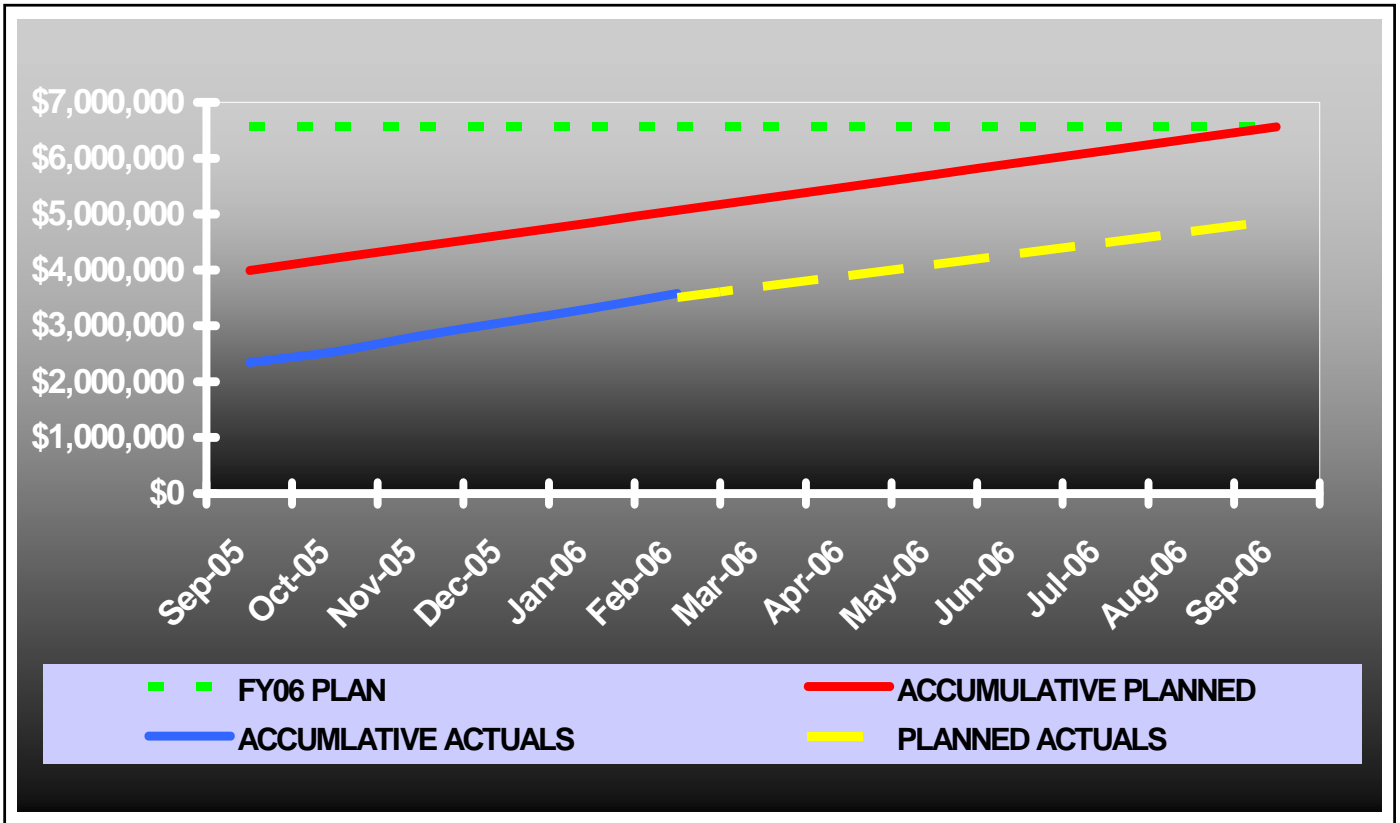
E1-CCSE Stormwater Facilities Master Plan

RESOLUTION

Continued monitoring with COT Growth and Environmental Office

GEC – GENERAL ENGINEERING CONSULTANT

GEC Contract Financial Summary of Planned Vs. Actual Costs – FISCAL YEAR 2006



GEC – PUBLIC INVOLVEMENT

Key Personnel:

Public Information Manager: Bonnie Pfuntner - The LPA Group
Public Information Officer: Carlana Hoffman – QCA

Activities Since Last Period:

1. Mailed Public Officials, TCC, CAC, and PAG Notification for N2-CCNW/SW Hearing and Newsletter (3/7)
2. Mailed N2-CCNW/SW Newsletter to citizens (3/9)
3. Submitted notice for N2-CCNW/SW Hearing to run in Florida Administrative Weekly (3/10)
4. Submitted legal ad to run twice for N2-CCNW/SW Hearing in classified section of Democrat (3/14 and 3/28)
5. Submitted display ad for N2-CCNW/SW Hearing to run in local section of Democrat (3/28)
6. Coordinated Variable Message Sign placement for N2-CCNW/SW Hearing
7. Various Website Updates
8. Attended two E1-CCSE CEI Meetings
9. Preparation of GEC Performance Report

Planned Activities for Next Period:

1. CCNW/SW prep and coordination for 4/4 Public Hearing
2. CCNW/SW Summary Report following Public Hearing from citizen input and comments rec'd
3. Display Panel Graphics for Blueprint Retreat
4. Presentation development for APWA Annual Conf.

N1 - CAPITAL CIRCLE NW – I-10 to US 90

Photo Taken Jan. 2006



N1 - CAPITAL CIRCLE NW – I-10 to US 90

Right-Of-Way Status Report:

CLOSED - (IN POSSESSION)	30
AGREEMENTS SECURED BUT NOT CLOSED	91
DONATION	4
NEGOTIATING/PREPARING FOR SUIT	0
TOTAL PARCELS ON PROJECT	125

FDOT is currently updating the R/W Cost Estimate. It currently indicates the estimate to be \$45,000,000

N2 - CAPITAL CIRCLE NW/SW – US 90 to SR 20

Project Description:

The Expanded Project Development and Environment (PD&E) Study limits for this 2.9 mile project extend from Tennessee Street (US 90/SR 10) to Orange Avenue (SR 371). This project also includes the preparation of approximately 60% design plans, etc. from Tennessee Street to Orange Avenue.

Project Personnel:

Blueprint 2000: **Project Manager:** Jim Shepherd
H.W. Lochner: **Project Manager:** Hugh Williams

Contract Cost & Schedule Status - Agreement No. 772/Authorization 1 - As of 2/14/2006

Contract Commencement:	10May04
Contract Completion:	10May07
Percent of Work Performed:	50.3%
Original Contract Amount:	\$ 1,921,585.90
Executed Supplemental Agreements:	\$ 159,836.80
Pending Supplemental Agreements:	\$ 0.00
Current Contract Amount:	\$ 2,081,422.70
Invoiced to Date:	\$ 1,046,234.00
Remaining Contract Amount:	\$ 1,035,188.70
Percent of Contract Amount Complete:	50.3%
Original Contract Time:	1095 Days
Contract Time Extensions:	0 Days
Current Contract Time:	1095 Days
Contract Time Expended:	645 Days
Contract Time Remaining:	450 Days
Percent Contract Time Expended:	58.9%

Schedule Milestones:

Draft Preliminary Engineering Report	14Mar05
Public Hearing	04Apr06
30% Roadway Plans	07Jul06
Draft Environmental Documents	14Mar06
Final Environmental Documents	21Apr06
Final Preliminary Engineering Report	21Apr06
60% Roadway Plans	10Nov06
Bridge Dev. Report	11Aug06
Draft ROW Maps	10Nov06
Final ROW Maps	15Dec06

N2 - CAPITAL CIRCLE NW/SW – US 90 to SR 20

Design Subconsultant Participation:	Contract Amt	% of Design Contract	ETD	YTD
Environmental Geotechnical Specialists <i>Geotechnical</i>	\$ 126,831.57	6.09	\$ 56,931.18	\$ 0.00
Diversified Design & Drafting Services <i>Survey and R/W Mapping</i>	\$ 443,781.44	21.32	\$ 278,799.32	\$ 104,115.28
Archaeological Consultants, Inc. <i>Cultural Resource Assessment</i>	\$ 10,947.15	0.53	\$ 10,399.79	\$ 0.00
HNTB/TEI <i>Traffic Analysis</i>	\$ 80,310.59	3.86	\$ 79,105.93	\$ 401.55
American Acquisition Group <i>Right of Way</i>	\$ 95,201.78	4.57	\$ 114,748.15	\$ 28,773.63
HW LOCHNER (PRIME) <i>Prime Consultant</i>	\$ 1,324,350.17	63.63	\$ 553,320.45	\$ 146,626.54
<hr/>				
Total Design Contract:	\$ 2,081,422.70	100.00%	\$ 1,093,304.82	\$ 279,917.00

Design MBE Goal:	\$ 322,620.52	15.50%
Design MBE to Date:	\$ 346,130.29	31.66%

Project Status:

- ⇒ Surveying and other preliminary design activities
- ⇒ Preparing for the Public Hearing

Activities Since Last Period:

1. Working to complete processing of topographic survey from Blountstown Hwy. to Tennessee St., and continued survey along SR 20.
2. Completed updating the environmental and engineering reports, prior to the Public Hearing
3. Continued the structural analysis for bridges at CSX RR and Gum Swamp.
4. Assessing permit delegation to see if this is in the best interest of the project.
5. Continued evaluation of project ponds for two scenarios:
 1) regional/retrofit is included in the project, or 2) regional/retrofit is funded later in the program.
6. Completed the evaluation of the Delta Park property for suitability for stormwater management and mitigation.
7. Awaiting on-going coordination between Leon County School Board and Uncle Bob's Storage to resolve access and stormwater management issues.
8. Continued negotiations on SA #3.
9. Preparing for April 4 Public Hearing.
10. Working on preliminary design.

N2 - CAPITAL CIRCLE NW/SW – US 90 to SR 20

Planned Activities for Next Period:

1. Continue survey, commence next phase of geotechnical activities, and other preliminary design activities, from SR 20 to Tennessee St.
2. Complete negotiations for SA #3.
3. Continue coordination and resolution of access and storm water management issues related to Leon County School Board and Uncle Bob's, and Capital Hydraulics, etc.
4. Complete preparations for and conduct the Public Hearing on April 4.
5. Conduct final PAG meeting prior to the Public Hearing, on March 28.
6. Continue determining the drainage requirements for the project.
7. Evaluate impacts from Public Hearing and update documents for submittal to FDOT and FHWA

Significant Issues and Resolutions:

ISSUE

Transition south of Orange Avenue.

RESOLUTION

H.W. Lochner has reviewed and revised the roadway transition based on direction from the IA at the December 15 meeting. It appears to be satisfactory at this time.

ISSUE

Pond and mitigation alternatives.

RESOLUTION

H.W. Lochner is continuing to investigate the ponds needed for the roadway improvements, as well as the potential for any regional or retrofit ponds.

ISSUE

Leon County School Board Maintenance Facility access.

RESOLUTION

LCS staff received a task authorization from the School Board to begin work on joint access with Uncle Bobs Self Storage. Coordination is on-going.

ISSUE

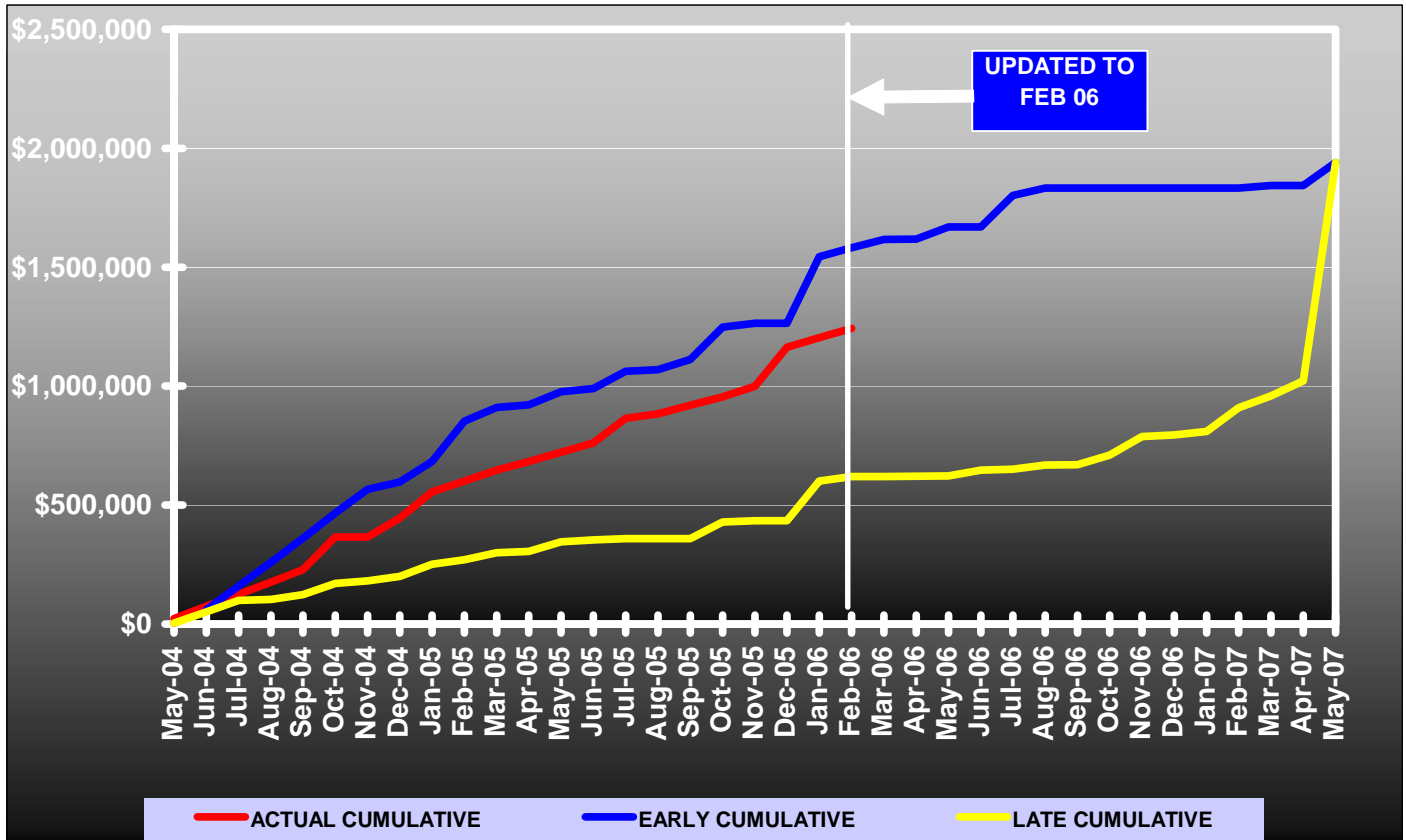
Delivery of R/W Documents prior to June IA Meeting.

RESOLUTION

Lochner team and Blueprint working to resolve how much of the work can be completed by then.

N2 – CAPITAL CIRCLE NW/SW – EPD&E Study

Contract Financial Summary of Planned Vs. Actual Costs



W1 - CAPITAL CIRCLE SW – Springhill Road to SR 20

Project Description:

Capital Circle (SR 263) between Crawfordville Road (SR 61 US 319) and Blountstown Highway (SR 20) a distance of approx. 6.7 miles.

Using the Blueprint 2000 & Beyond "Project Definitions Report", prepared by the Economic and Environmental Consensus Committee in 1999; the Lake Bradford Sector Plan, conducted by the Tallahassee/Leon County Planning Department; and based upon public input, Blueprint 2000 staff has identified and evaluated 17 alternative alignments, which are located in three corridors. Corridor 1 includes upgrading Capital Circle along the existing alignment; Corridor 2 includes constructing the proposed improvements to the south and west of the Tallahassee Regional Airport; Corridor 3 includes constructing the proposed improvements using portions of Orange Avenue, Tyson Road, Springhill Road, or a new alignment, etc.

A Project Development and Environment (PD&E) Study will begin in June 2006 to evaluate and determine the future improvements.

Project Personnel:

Blueprint 2000:	Planning Manager:	Dave Bright
	Project Manager:	Paul Hiers

Activities Since Last Period:

1. Released the RFQ
2. Advertised for PD&E Consultant
3. Received four Statement of Qualifications

Planned Activities for Next Period:

1. Evaluate the Statement of Qualifications
2. Shortlist
3. Conduct Pre-Proposal Conference

E3 - CAPITAL CIRCLE SE – Woodville Hwy. to Crawfordville Rd.

Project Description:

This project proposes to widen approximately 1.13 miles of the existing two-lane Capital Circle SE from Woodville Highway to Crawfordville Road to an ultimate multi-lane urban facility.

FDOT Roadway ID: 55002000 SR 263 from MP 0.200 to MP 1.330

Project Personnel:

Blueprint 2000:	Engineering Manager:	Bill Little
	Project Manager:	Gary Phillips
URS Corporation:	Project Manager:	Masoud Foroughi

Contract Cost & Schedule Status - Agreement No. 1167/Authorization 1 - As of 3/21/2006

Contract Commencement:	02Feb06
Contract Completion:	12Sep07
Percent of Work Performed:	3.0%

Original Contract Amount:	\$	885,689.21
Executed Supplemental Agreements:	\$	0.00
Pending Supplemental Agreements:	\$	0.00
Current Contract Amount:	\$	885,689.21
Invoiced to Date:	\$	0.00
Remaining Contract Amount:	\$	885,689.21
Percent of Contract Amount Complete:		0.0%

Original Contract Time:	587 Days
Contract Time Extensions:	0 Days
Current Contract Time:	587 Days
Contract Time Expended:	47 Days
Contract Time Remaining:	540 Days
Percent Contract Time Expended:	8.0%

Schedule Milestones:

Selection of Design Consultant	(On-going)	16Aug05
IA authorizes Blueprint to execute Contract with Design Consultant	(On-going)	19Sep05
Contract and LOA#1 are executed		02Feb06
Submit Typical Section Package		06Mar06
Submit Pond Siting Report		05Jun06
Submit ROW Control Survey Maps		03Jul06
Submit Phase I Plans		07Aug06
Submit Pavement Design Package		02Nov06
Submit Pavement Design Package		02Nov06
Submit Phase II Plans		11Jan07
Submit Phase II ROW Maps		11Jan07

E3 - CAPITAL CIRCLE SE – Woodville Hwy. to Crawfordville Rd.

Design Subconsultant Participation:	Contract Amt	% of Design Contract	ETD	YTD
EGS				
<i>Geotechnical</i>	\$ 67,411.46	7.61	\$ 0.00	\$ 0.00
ACI				
<i>Cultural Resource (Archaeological)</i>	\$ 8,153.18	0.92	\$ 0.00	\$ 0.00
Mehta				
<i>Survey</i>	\$ 84,499.24	9.54	\$ 0.00	\$ 0.00
DRMP				
<i>Survey and Mapping</i>	\$ 161,850.03	18.27	\$ 0.00	\$ 0.00
URS (Prime)				
<i>Design, Environmental, Signalization, Landscape</i>	\$ 563,775.30	63.65	\$ 0.00	\$ 0.00
<hr/>				
Total Design Contract:	\$ 885,689.21	100%	\$ 0.00	\$ 0.00

Design MBE Goal:	\$ 137,281.83	15.50%
Design MBE to Date:	\$ 0.00	0.00%

Project Status:

Contract and Letter of Authorization were executed on February 2, 2006
 Part A - 60% design plans - total cost is \$885,689.21

Activities Since Last Period:

1. Conducted field reviews.
2. Met with Blueprint 2000 on stormwater issues
3. Data collection to establish stormwater design criteria
4. Submitted URS QA plan and pay-out curve
5. Submitted draft typical section package
6. Began pond siting evaluation

Planned Activities for Next Period:

1. Begin topographic survey
2. Begin R/W control survey
3. Submit concept plans to utilities for first contact
4. Evaluate design at Crawfordville Road intersection and transition west to existing two lanes
5. Identify and size potential pond sites
6. Prepare drainage map

E3 - CAPITAL CIRCLE SE – Woodville Hwy. to Crawfordville Rd.

Significant Issues and Resolutions:

ISSUE

Use of Federal lands (Apalachicola National Forest) for E3 project

RESOLUTION

Application for the use of Federal lands for transportation facility and utilities has been prepared as a draft and a meeting to review the information, along with Orange Avenue Application, has been scheduled for March 22 with USFS in Crawfordville.

Blueprint 2000, Leon County and USFS are continuing discussions about various land swap or acquisition options.

ISSUE

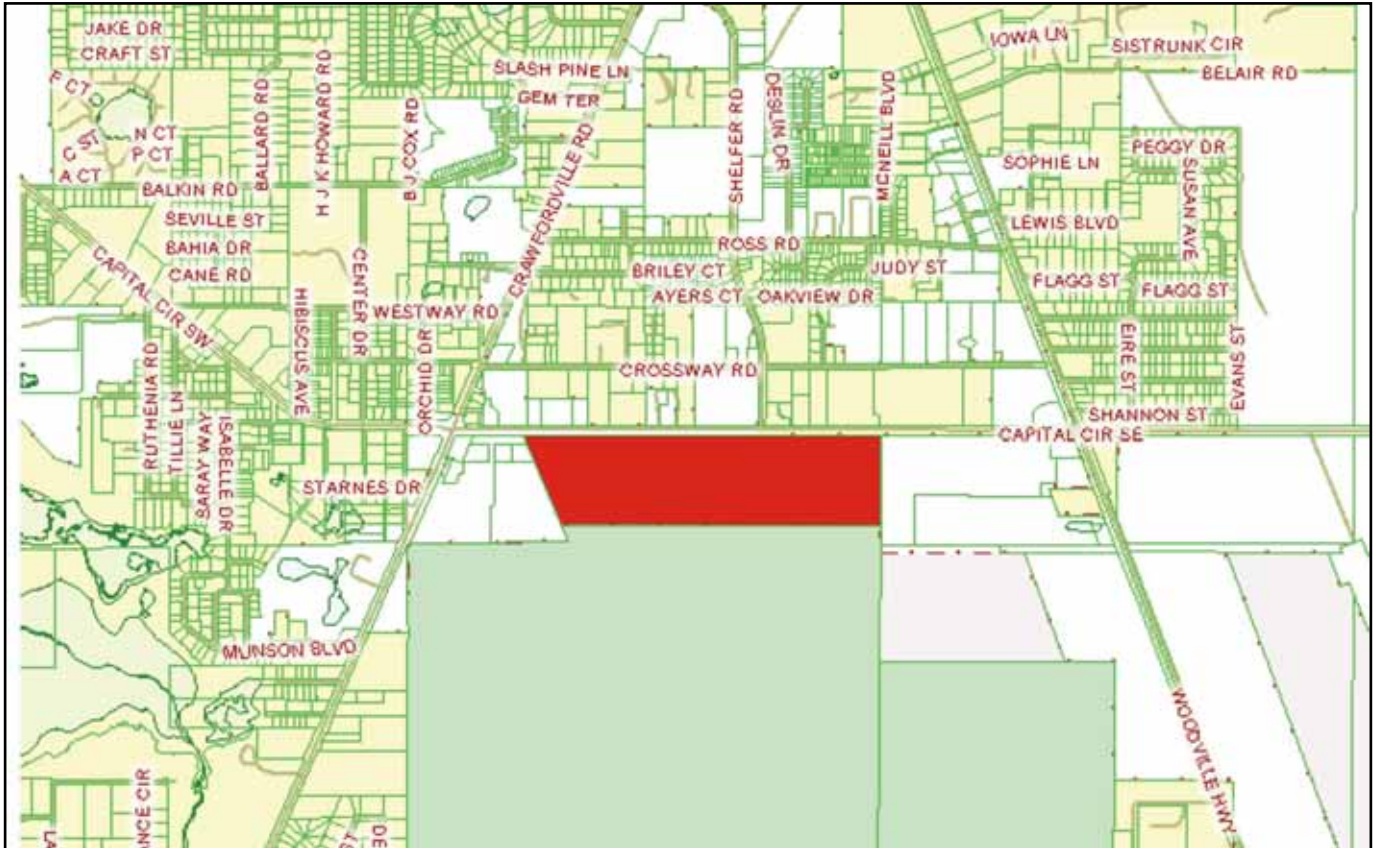
Location and design of stormwater pond located in Flea Market Tract

RESOLUTION

Preliminary linear pond design located adjacent to Utility easement has been developed and submitted to COT Growth Management for comments. Preliminary review by COT GM and a letter from USFS indicate the Flea Market Tract is not manageable.

E3 - CAPITAL CIRCLE SE – Woodville Hwy. to Crawfordville Rd.

Right-Of-Way Status Report:



The Flea Market Tract owned by the United States Forest Service. Blueprint is currently working with the USFS to secure this 100-Acre parcel on Capital Circle between Woodville and Crawfordville Hwy. Blueprint is having discussions with the Forest Service, Leon County, COT Growth Management about this parcel and a possible land swap. Blueprint is proceeding with a right-of-way easement application from the USFS in order to secure the right-of-way needed for the Capital Circle Widening project.

E2 - CAPITAL CIRCLE SE – Woodville Highway to Tram Road

Project Description:

This project proposes to widen approximately 2.2 miles of the existing two-lane Capital Circle SE from Woodville Highway to Tram Road to an ultimate six-lane facility, mileposts 0.0 to 2.12. In addition, a transitional segment west of Woodville Highway (SR 263 MP 0.0 to approximately MP 0.2).

Project Personnel:

Blueprint 2000: **Engineering Manager:** Bill Little
 Project Manager: Doug Martin
DRMP: **Project Manager:** John Burkett
 Assistant PM: Bryant King

Contract Cost & Schedule Status - Agreement No. 1098 - As of 3/21/2006

Contract Commencement: 20Sep05
 Contract Completion: 01Sep07
 Percent of Work Performed: 40.1%

Original Contract Amount: \$ 912,692.13
 Executed Supplemental Agreements: \$ 36,924.00
 Pending Supplemental Agreements: \$ 498,938.62
 Current Contract Amount: \$ 949,616.13
 Invoiced to Date: \$ 421,273.22
 Remaining Contract Amount: \$ 568,698.31
 Percent of Contract Amount Complete: 44.36%

Original Contract Time: 711 Days
 Contract Time Extensions: 0 Days
 Current Contract Time: 711 Days
 Contract Time Expended: 182 Days
 Contract Time Remaining: 529 Days
 Percent Contract Time Expended: 25.6%

Design Subconsultant Participation:	Contract Amt	% of Design Contract	ETD	YTD	
PBS&J					
<i>Utilities</i>	\$ 17,679.39	1.86	\$ 0.00	\$ 0.00	
EGS					
<i>Geotechnical</i>	\$ 101,211.21	10.66	\$ 84,681.04	\$ 84,681.04	
Poole					
<i>Surveying</i>	\$ 75,645.96	7.97	\$ 45,999.06	\$ 45,999.06	
DRMP (PRIME)					
<i>Prime Consultant</i>	\$ 718,155.57	75.63	\$ 290,593.12	\$ 245,991.25	
Total Design Contract:		\$ 912,692.13	96.12%	\$ 421,273.22	\$ 376,671.35

Design MBE Goal:	\$ 141,467.28	15.50%
Design MBE to Date:	\$ 109,092.07	31.02%

E2 - CAPITAL CIRCLE SE – Woodville Highway to Tram Road

Project Status:

- ⇒ Mainline design survey substantially complete.
- ⇒ ROW Survey substantially complete
- ⇒ Natural Features Inventory ready for submittal to City
- ⇒ Phase I comments addressed
- ⇒ ROW Maps from Woodville to Tram submitted
- ⇒ Continued coordination with St. Joe for Pond Site Alternatives
- ⇒ Utility Coordination underway

Activities Since Last Period:

1. Submitted Group 1 and 2 ROW Maps
2. Submitted Control Maps
3. Addressed Phase I comments and held comment clarification meeting
4. Continued coordination with St Joe on Pond Site Locations
5. Made first contact with Utilities for Phase I
6. Coordinated with URS regarding the tie-in between E2 and E3 segments

Planned Activities for Next Period:

1. Kickoff Utility JPA with City of Tallahassee
2. Continue Phase I utility coordination
3. Landscape coordination with Blueprint (design kickoff)
4. Continue coordination with St Joe team for storm water siting
5. Finalize alignment and intersection design issues in anticipation of full phase II plans production

Significant Issues and Resolutions:

ISSUE

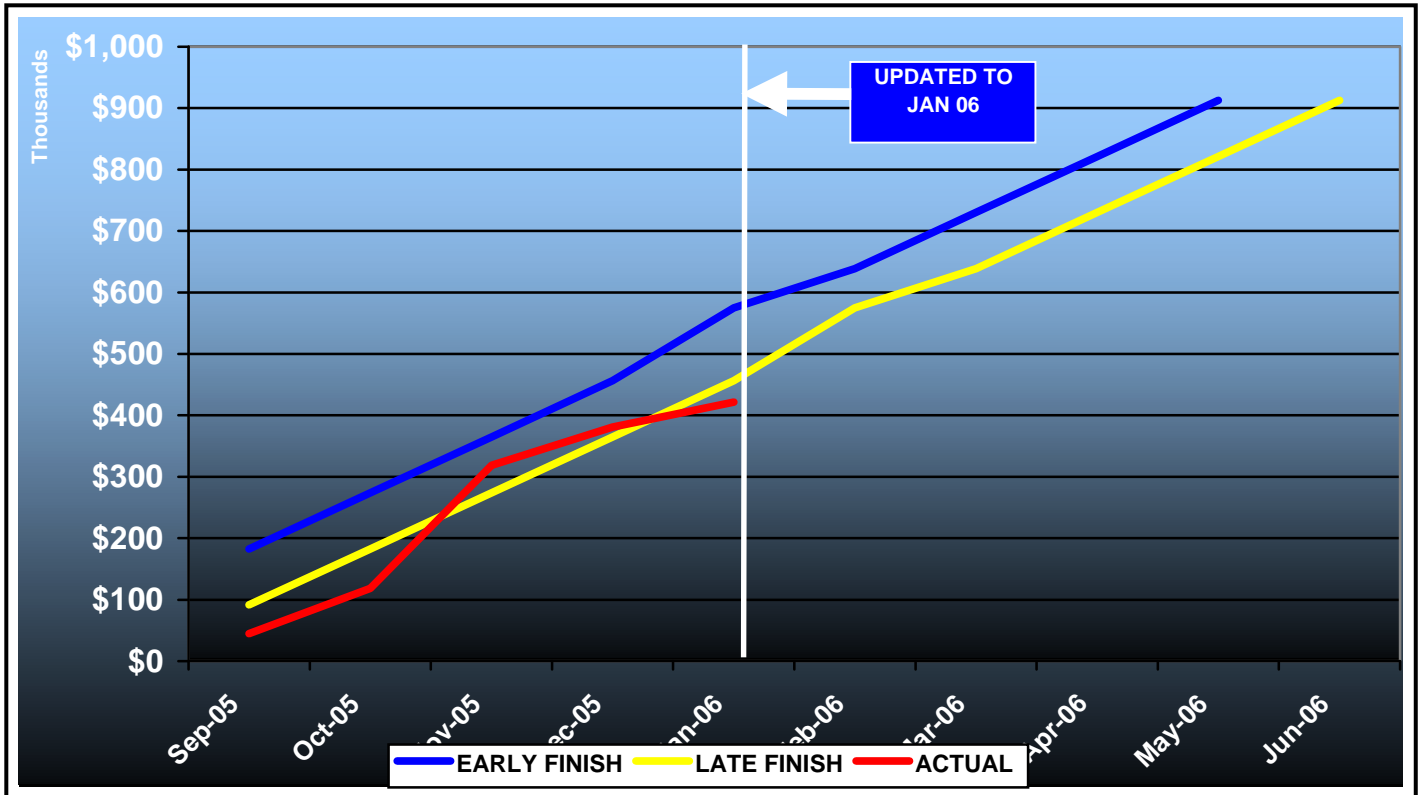
Potential agreement with St. Joe for pond sites

RESOLUTION

Accelerated schedule still required to aggressively pursue ROW acquisition in anticipation of additional funding. Some adjustments required providing full Phase submittals for review. Pond sites critical in completion of Phase II submittal and Pond Siting Report. Met with St Joe on 3/2/06 to further refine pond sites and establish basis/terms for agreement. Agreed to investigate vertical alignment changes to provide closer fit to preliminary SFMP requirements. Meeting Scheduled with St. Joe 2/16/06.

E2 - CAPITAL CIRCLE SE – Woodville Hwy to Tram Rd

Contract Financial Summary of Planned Vs. Actual Costs



Right-of-Way Status Report:

1. The partial right-of-way mapping for this segment of CCSE has been received by Blueprint 2000 and our appraiser is currently developing a fee proposal and schedule. In addition, Blueprint has met with the right-of-way consultant who will soon begin the acquisition process. We expect the completed right-of-way maps by May 15, 2006.

E1 - CAPITAL CIRCLE SE – Tram Road to Connie Drive

Project Description:

The proposed 3.44-mile project along Capital Circle Southeast (US 319/SR261) extends from south of Tram Road to Connie Drive (milepost 1.931 and 5.371) in Leon County and includes expanding the existing two-lane undivided rural roadway to a six-lane divided urban (curb and gutter) facility. The purpose of the roadway improvement project is to increase the capacity and safety of the existing highway. New traffic signals, including ITS features, will be provided at six intersections: Tram Road, Shumard Oak Boulevard, Merchants Row Drive, Blair Stone Road, Orange Avenue and Old St. Augustine Road. The project also includes significant landscaping as well as pedestrian, bicycle and recreational amenities.

Project Personnel:

Blueprint 2000:	Engineering Manager:	Bill Little
	Project Manager:	Marek Romanowski
	Construction Manager:	Garrett Martin
PBS&J:	Project Manager:	Alan Rainer

Contract Cost & Schedule Status - As of 3/15/2006

Contract Commencement:	10Jan05
Contract Completion:	25Jan08
Percent of Work Performed:	26.2%
Original Contract Amount:	\$ 30,796,339.34
Executed Supplemental Agreements:	\$ 5,800,613.15
Pending Supplemental Agreements:	\$ 15,400.00
Current Contract Amount:	\$ 36,596,952.49
Invoiced to Date:	\$ 10,620,012.07
Remaining Contract Amount:	\$ 25,976,940.42
Percent of Contract Amount Complete:	29.0%
Original Contract Time:	1110 Days
Contract Time Extensions:	11 Days
Current Contract Time:	1121 Days
Contract Time Expended:	429 Days
Contract Time Remaining:	692 Days
Percent Contract Time Expended:	38.3%

E1 - CAPITAL CIRCLE SE – Tram Road to Connie Drive

Design Subconsultant Participation:	Contract Amt	% of Design Contract	ETD	YTD
<i>Diversified Design & Drafting Services</i>				
<i>Design survey</i>	\$ 111,758.50	5.59	\$ 77,230.00	\$ 0.00
Allen Nobles & Associates, Inc.				
<i>Tree survey for permit application</i>	\$ 18,000.00	0.90	\$ 18,000.00	\$ 18,000.00
<i>Environmental & Geotechnical Specialists</i>				
<i>Geotechnical design services</i>	\$ 163,985.26	8.20	\$ 163,985.26	\$ 2,677.26
CMTS Florida, LLC				
<i>Inspection services</i>	\$ 210,000.00	10.50	\$ 36,384.00	\$ 14,496.00
Registe Sliger Engineering, Inc.				
<i>Structural design</i>	\$ 9,898.58	0.49	\$ 8,017.85	\$ 6,137.12
PBS&J (Design Lead)				
<i>Design</i>	\$ 1,503,957.66	74.32	\$ 1,430,661.57	\$ 301,686.80
Total Design Contract: \$ 2,017,600.00 100% \$ 1,734,278.68 \$ 342,997.18				

Design MBE Goal:	\$ 312,728.00	15.50%
Design MBE to Date:	\$ 285,617.11	16.47%

CONSTRUCTION:

Total Construction Contract: \$34,579,352.49 **Const. Invoiced to Date: \$10,228,133.88**
Const. MBE Invoice to Date: \$389,767.46

Construction MBE Goal:	\$ 7,261,664.02	21.00%
Construction MBE to Date:	\$	3.81%

Please Note: The state-wide certified MBE contractor, 'Gator Boring' has been removed from the City of Tallahassee's list of locally certified MBE firms (as of 2005). This resulted in the Gator's original contract amount of \$329,372.20 being removed from the construction MBE participation amount.

Schedule Milestones:

Intergovernmental Agency (IA) Approval	20Sep04
Execute Contract	22Dec04
Notice to Proceed	10Jan05
Right of Way Acquisition, Phase 1	01May05
Right of Way Acquisition, Phase 2	01Sep06
60% Design Submission - Segment I	28Feb05
90% Design Submission - Segment II	15Apr05
Final Design Submission - Segment II	25Jul05
90% Design Submission - Segment IV	30Aug05
90% Design Submission - Segment III	05Oct05
90% Design Submission - Segment I	21Oct05
Final Design Submission - Segment IV	23Mar06
Final Design Submission - Segment III	24Mar06
Final Design Submission - Segment I	24Mar06
Contract Completion	25Jan08

E1 - CAPITAL CIRCLE SE – Tram Road to Connie Drive

Project Status:

Erosion Control and Clearing and Grubbing work is complete from Tram Road to Monday Street. The EMP Conditional permit for Segment 2 has been granted by COT Growth Management on 10/31/05. Road construction between Tram Road and Merchants Row Boulevard is underway, as per EMP permit conditions. Conditional permit to place fill on Segments 2 and 3 has been granted by COT and DEP. Design of Segments 1, 3, and 4 is more than 90% complete. All comments made by Blueprint and PW has been addressed and the design work on final plans is underway. The EMP permits for Segments 1, 3, and 4 have been applied for. Placing of fill on Segments 2 and 3 is in progress and topsoil and sod is being placed on finished slope areas to prevent erosion. Work on COT Water Utility 30" Sanitary Bypass (WP 1) has been completed. Work on COT Water Utility potable water, re-use water and gravity sewer lines installation and relocation is in progress. Structural asphalt has been placed on southbound lanes between Tram Road and Merchants Road Boulevard in the week of January 17th. No major erosion control, safety, or maintenance of traffic issues to date. Utilities have been adjusted on Segment 2. Utility relocation permit has been obtained for Segments 3 and 4.

The temporary traffic signals have been installed at Merchants Row intersection, some temporary striping put down, and traffic has been switched over to the final CCSE Southbound lanes between Tram Road and Merchants Row Boulevard on February 6th. Drainage pipe placement and milling of the existing asphalt is now being done on northbound lanes between Tram Road and Merchants Row Boulevard. The DRB Meeting has been held on February 27th. Erosion Control and M.O.T. issues have developed this month that has required attention. The Contractor is making satisfactory progress addressing these issues.

Activities Since Last Period:

1. The revised 90% complete plans for Segment 4, 3, and 1 have been submitted to PW for review. PW released the plans for permitting.
2. The DB Team submitted permit application for Segments 3 and 1 to GM and received clearing, grubbing, and erosion control plans approval from GM for Segment 1.
3. Blueprint and DB Team responded to GM's permitting conditions on Segment 4 and are in the process of preparing a Linear Infrastructure Variance (including HQSF mitigation plan).
4. The DB Team submitted the utility relocation permit application for Segment 1 to COT and Leon Co.
5. Hauling and compacting of embankment material continued on Segments 2 and 3 as per fill permit.
6. Drainage work, Segment 2.
7. Clean up of erosion control issues.

Planned Activities for Next Period:

1. Conduct design progress meeting and CEI meeting.
2. Continue working towards 100% plans on Segments 1, 3 and 4.
3. Continue to work on EMP permit conditions for Segments 1, 2A, 3, and 4, including field requirements and adjustments.
4. Adjust MOT plans as required if permits received from Growth Management.

Construction Activities:

1. Compact embankment material and base, Segment 2.
2. Drainage work, Segment 2.
3. Clean up of erosion control issues.
4. Placement of sod to cover completed embankment areas.

E1 - CAPITAL CIRCLE SE – Tram Road to Connie Drive

Significant Issues and Resolutions:

ISSUE

1. Right-of-way and easement issues with COT Electric Utility.
2. Permitting.

RESOLUTION

Re. pt.2: Received approval of design and mitigation measures for Canopy Road and High Quality Successional Forest at the intersection of Old St. Augustine Road and CCSE. Continue to work on EMP permit conditions for Segments 1, 2A, 3 and 4, including Linear Infrastructure Variant for Segment 4. Interim drainage solution has been proposed by the Design-Build Team to facilitate EMP permit processing independently of the approval of Southwood SFMP by the City. A Memorandum of Understanding (MOA) has been signed by Southwood and COT for creating of drainage easement by SouthWood south of Tram Road. SouthWood is in the process of addressing MOE commitments.

E1 - CAPITAL CIRCLE SE – Tram Road to Connie Drive

Photo Taken Feb. 2006



E1 - CAPITAL CIRCLE SE – Tram Road to Connie Drive

Right-Of-Way Status Report:

NEGOTIATING	0
SECURED THROUGH OT	15
DONATIONS	14
SECURED THROUGH NEGOTIATED SETTLEMENT	30
AGREEMENT SECURED BUT NOT CLOSED	1
TOTAL PARCELS ON PROJECT	60

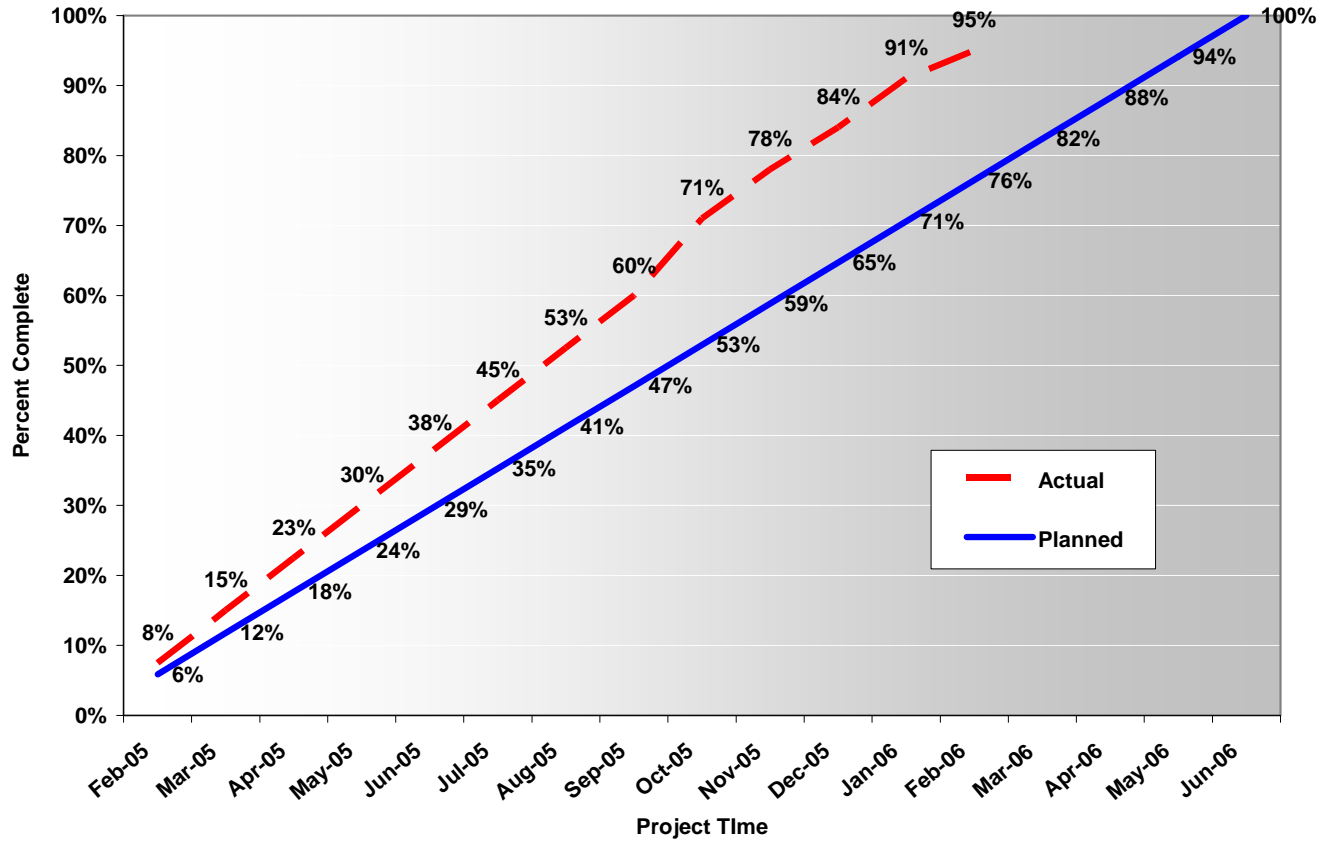
1. There are 13 parcels at Tram Road and Capital Circle SE which require right-of-way acquisition and/or relocation services. Blueprint is near completion on this section of CCSE. At the present time, there are 3 parcels remaining. Two of these parcels are scheduled for O/T on April 12, 2006. The remaining parcel is awaiting a mortgage release and should close in next 2-3 weeks. Blueprint had an 85% settlement rate for this project. In addition, the relocation process is also underway and we have contracted with consultant to manage the demolition of the two improvements.



E1 – CAPITAL CIRCLE SE – Tram Rd to Connie Dr

Right-Of-Way Status Report:

Right-of-Way Aquisition Effort
 Capital Circle Southeast



C0 - CAPITAL CASCADES TRAIL - Master Plan

Project Description:

This six mile long project area is commonly referred to as Capital Cascade Trail. It is Blueprint 2000 Map Area 3, a corridor along the St. Augustine Branch (SAB) from Tennessee Street to the SABs confluence with the Central Drainage Ditch (CDD) and then downstream along the CDD to its confluence with Munson Slough.

Project Personnel:

Blueprint 2000:	Planning Manager:	David Bright
	Project Manager:	Gary Phillips
Genesis:	Project Manager:	Mark Llewellyn

Contract Cost & Schedule Status - Agreement No. 533/Authorization 1 - As of 3/21/2006

Contract Commencement:	08Oct03
Contract Completion:	08Apr05
Percent of Work Performed:	90.0%
Original Contract Amount:	\$ 1,399,282.35
Executed Supplemental Agreements:	\$ 133,639.38
Pending Supplemental Agreements:	\$ 0.00
Current Contract Amount:	\$ 1,532,921.73
Invoiced to Date:	\$ 1,500,019.76
Remaining Contract Amount:	\$ 32,901.97
Percent of Contract Amount Complete:	97.9%
Original Contract Time:	548 Days
Contract Time Extensions:	357 Days
Current Contract Time:	905 Days
Contract Time Expended:	895 Days
Contract Time Remaining:	10 Days
Percent Contract Time Expended:	98.9%

C0 - CAPITAL CASCADES TRAIL - Master Plan

Design Subconsultant Participation:	Contract Amt	% of Design Contract	ETD	YTD
EGS				
<i>Environmental</i>	\$ 84,885.47	5.54	\$ 84,885.47	\$ 0.00
Moore Bass				
<i>Landscape Architecture</i>	\$ 115,008.00	7.50	\$ 110,639.49	\$ 0.00
Archaeological Consultants Inc.				
<i>Historic and Archaeological</i>	\$ 27,162.95	1.77	\$ 27,162.95	\$ 0.00
CDM				
<i>Stormwater</i>	\$ 235,598.00	15.37	\$ 232,699.21	\$ 0.00
Biological Research Associates				
<i>Natural Features Inventory</i>	\$ 24,340.00	1.59	\$ 18,646.12	\$ 0.00
Greenways, Inc.				
<i>Park Programming</i>	\$ 19,455.00	1.27	\$ 12,655.19	\$ 0.00
Jennings Environmental				
<i>Stream Morphology</i>	\$ 9,700.00	0.63	\$ 9,635.60	\$ 0.00
GENESIS GROUP (PRIME)				
<i>Prime Consultant</i>	\$ 1,016,772.32	66.33	\$ 1,003,695.73	\$ 0.00
<hr/>				
Total Design Contract:	\$ 1,532,921.74	100.00%	\$ 1,500,019.76	\$ 0.00

Design MBE Goal:	\$ 237,602.87	15.50%
Design MBE to Date:	\$ 222,687.91	14.85%

Schedule Milestones:

Complete Draft Storm Water Master Plan	31Jul05
Finalize Stormwater Master Plan for TCC, CAC and IA action	19Sep05
Complete Final project report & Tech Appendix	30Sep05
Complete Draft Storm Water Master Plan:	31Jul05
Finalize Stormwater Master Plan for TCC, CAC and IA action	19Sep05
Complete Technical Report 2	12Feb06
Complete Technical Report 3	24Feb06

Project Status:

Project is in Phase 1, Master Plan Development. There are five tasks identified on the scope.

Task 1 - Data Collection	100% Complete
Task 2 - Existing Stream Hydraulics Analysis	100% Complete
Task 3 - Comprehensive Corridor Master Plan	100% Complete
Task 4 - Public Information Program	100% Complete
Task 5 - Documentation	98% Complete

Phase 2 and Master Plan Expansion Tasks to be scoped and LOAs issued.

C0 - CAPITAL CASCADES TRAIL - Master Plan

Activities Since Last Period:

1. Reviewing Cost Estimate and Negotiating Staff-hours for Master Plan Expansion
2. Scope of Work for Master Plan Expansion has been accepted by TCC and submitted to Genesis to prepare staff hour estimate.
3. Continuing to coordinate with COT Remediation Project on channel improvement and fair-share costs
4. Technical Report 2 final revisions have been completed and replacement pages and technical addendum have been provided.
5. Reviewing Cost Estimate and Negotiating Staff-hours for Segment 2 Design and Permitting

Planned Activities for Next Period:

1. Issue Letter of Authorization (LOA) for Segment 2 Design and Master Plan Expansion of Activities.
2. Finalize Technical Report 3
3. Pursue easement approval from DEP for Parcels C, D and E
4. Follow-up with CSX regarding the Engineering Agreement
5. Collect traffic counts at Van Buren and Gaines St. e/o Meridian to assess closure of Gadsden Rd.
6. Prepare scope and cost estimate to complete Myers Park SWMF Feasibility Report
7. Finalize JPA with COT on remediation coordination, i.e. box culvert and lower pond

Significant Issues and Resolutions:

ISSUE

Segment 2 Coordination with Remediation Project

RESOLUTION

Blueprint and COT have selected a 16' x 7' box culvert to replace the open ditch channel located south of the CSX Railroad trestle to South Monroe Street. Blueprint is working with the COT on the fair share costs associated with this improvement. A portion of the lower pond will be excavated per EECA requirements and then backfilled and lined with 40 mil HDPE. Blueprint 2000 will design and ultimately re-grade the area into a stormwater facility during the construction phase of Capital Cascade Trail - Segment 2. Blueprint shall not excavate or re-grade within the 2' cover layer. There is no/minimal cost to Blueprint 2000 for the COT pond design and construction.

ISSUE

FEMA Flood Map Amendment for the Existing Conditions (Segments 1, 2 and 3).

RESOLUTION

Finalize the Scope of Work (Blueprint and City). Proceed with the application and submittal process as soon as possible.

ISSUE

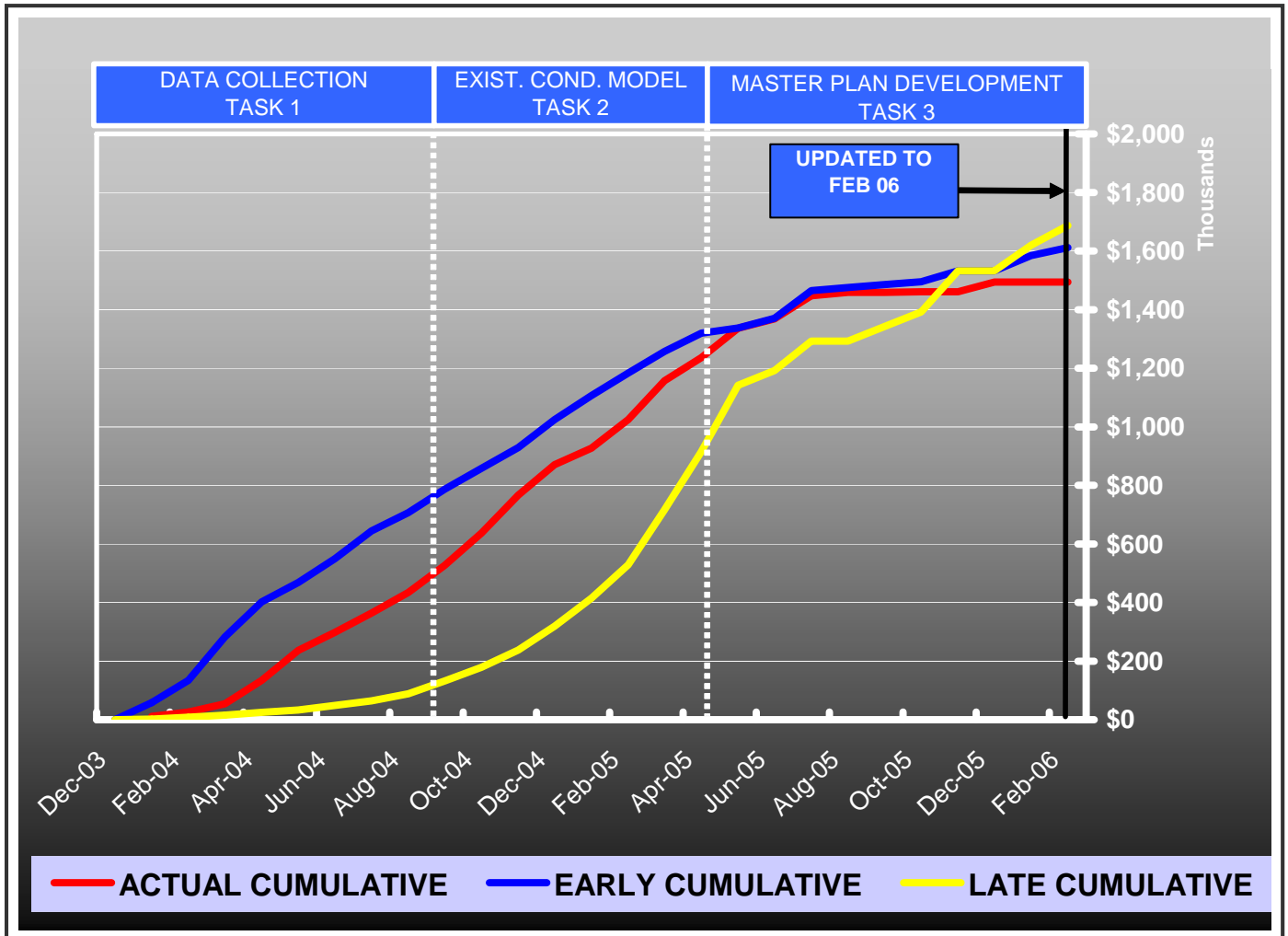
Jurisdictional Severance

RESOLUTION

DEP and Blueprint completed wetlands field review this month. Blueprint met again with DEP to discuss severance concerns and how to proceed, if acceptable with severing SAB. Blueprint agreed to complete additional analysis of impacts of severance and then meet again with DEP management. Blueprint is organizing the next meeting with DEP, anticipated in April.

C0 – CAPITAL CASCADE TRAIL – Master Plan

Contract Financial Summary of Planned Vs. Actual Costs with Time Extension



C0 - CAPITAL CASCADES TRAIL - Master Plan

Right-Of-Way Status Report:

1. There are several parcels near Myers Park that Blueprint and TPL are attempting to purchase for stormwater retention. At present Greg Chelius with TPL has had discussions with the property owner and they indicated their willingness to sell property. Blueprint has had the property appraised and is working through TPL and the property owner in an attempt to purchase this property in the near future. The property owner is currently having this property appraised.



2. Blueprint purchased a residential property at 218 FAMU Way within our land-banking program for Capital Cascade Trail. Blueprint was able to secure this property at the appraised value. Blueprint met with to confirm the property and structure were not eligible for the NRHP and could be demolished as soon as possible due to health and safety concerns SHPO agreed and we have contracted with a consultant to manage the demolition of this house. We have recently awarded a contract to a local DBE Firm to provide asbestos abatement and demolition.



C2 - CAPITAL CASCADES TRAIL – Segment 2 Design

Project Description:

Within the Capital Cascade Trail, Segment 2 is from Lafayette St. to South of Monroe Street

Project Personnel:

Blueprint 2000:	Planning Manager:	David Bright
	Project Manager:	Gary Phillips
Genesis:	Project Manager:	Mark Llewellyn

Contract Cost & Schedule Status:

Contract Commencement:	April 4, 2006
Contract Completion:	
Percent of Work Performed:	

Original Contract Amount:	TBD
Executed Supplemental Agreements:	
Pending Supplemental Agreements:	
Current Contract Amount:	
Invoiced to Date:	
Remaining Contract Amount:	
Percent of Contract Amount Complete:	

Original Contract Time:	TBD
Contract Time Extensions:	
Current Contract Time:	
Contract Time Expended:	
Contract Time Remaining:	
Percent Contract Time Expended:	

Schedule Milestones:

Fee Proposals Due	March 28, 2006
Fee Negotiations	On-going
Anticipated NTP	April 4, 2006

C2 - CAPITAL CASCADES TRAIL - Segment 2 Design

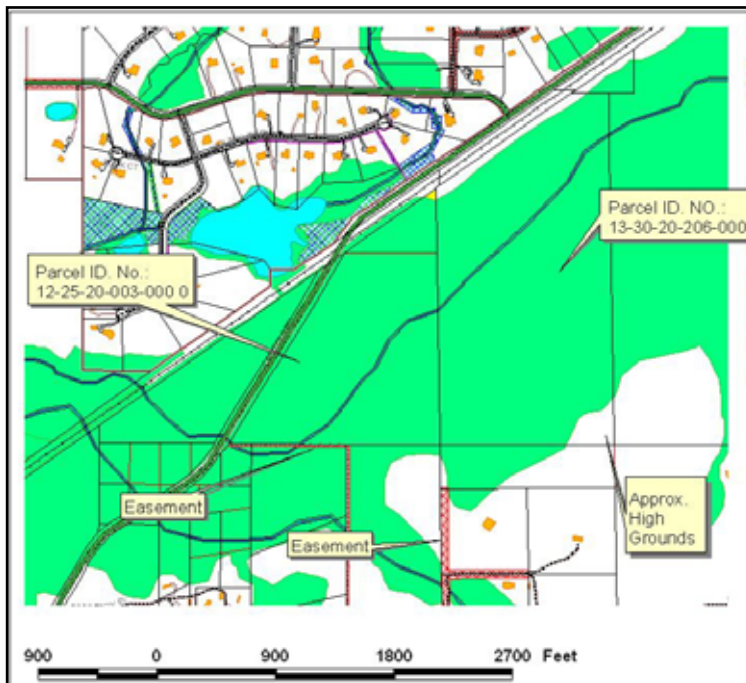


Approved Concept for Seg. 2

OTHER

Sensitive Land Acquisitions

1. Copeland Sink- Blueprint has secured this 168 Ac. parcel as part of a FCT Grant. This parcel is a portion of the parcels designated as protection of the Headwaters of the St. Marks. The FCT recently provided Blueprint with \$671,000.00 as their portion of the total costs.



2. Blueprint recently secured a Conservation Easement on a 132-acre tract of land at the Headwaters of the St. Marks. This parcel is a Priority 1 parcel within the St. Marks Basin. In addition, on November 30, 2005 Blueprint assigned this easement to the Northwest Florida Water Management District for their future management. Blueprint received a reimbursement for half of the cost of this easement.

3. Blueprint has recently begun discussions with the owner of the Patty Sink concerning that tract as well as other contiguous parcels for possible purchase of conservation easements as part of preservation of the Headwaters of the St. Marks.

