

## TABLE OF CONTENTS

### I. Monthly Progress Reports

	<u>Page</u>
GEC – GENERAL ENGINEERING CONSULTANT .....	1
GEC – PUBLIC INVOLVEMENT.....	5
N1 - CAPITAL CIRCLE NW – I-10 to US 90 .....	6
N2 - Capital Circle NW/SW – SR 371 (Orange Avenue) to US 90 .....	14
W1 - Capital Circle SW – Crawfordville Road to SR 20 .....	19
E3 - Capital Circle SE – Woodville Hwy to Crawfordville Rd.....	23
E2 - Capital Circle SE – Woodville Highway to Tram Road .....	27
E1 - Capital Circle SE – Tram Road to Connie Drive .....	31
C2 - Capital Cascade Trail –Segment 2 Design.....	40
Mahan Drive/US 90 – Dempsey Mayo Road to I-10 (Tier 2 Blueprint Project).....	46
Other .....	47
Acronymn Glossary.....	478

## **GEC – GENERAL ENGINEERING CONSULTANT**

### **Project Description:**

General Engineering Consultant Contract for the Blueprint Intergovernmental Agency. The LPA Group Incorporated is the Prime Consultant with Jacobs Civil, Incorporated as the major subconsultant. Twelve additional subconsultants, seven of which are MBE firms, make up the LPA/Jacobs Blueprint GEC Management Team.

### **Key Personnel:**

Program Manager: Bill Little - Jacobs  
Design Manager: Marek Romanowski - The LPA Group

### **Contract Cost & Schedule Status – Contract 597**

Original Contract Amount:	\$	7,494,493.00
Fiscal Year Re-Authorization:	\$	4,525,519.00
Executed Supplemental Agreements:	\$	0.00
Pending Supplemental Agreements:	\$	0.00
Current Contract Amount:	\$	12,020,012.00
Invoiced to Date:	\$	8,921,247.62
Remaining Contract Amount:	\$	3,098,764.38
Percent of Contract Amount Complete:		74.2%

**GEC – GENERAL ENGINEERING CONSULTANT**

<b>Subconsultant Participation:</b>	<b>Contract Amt</b>	<b>% of GEC Contract</b>	<b>ETD</b>	<b>YTD</b>
Moore Bass Consulting <i>Stormwater &amp; Landscaping</i>	\$ 170,677.00	1.42	\$ 82,600.43	\$ 14,224.00
Pope Environmental <i>Environmental Services</i>	\$ 211,276.00	1.76	\$ 138,690.00	\$ 13,687.50
OLH International <i>Program Controls</i>	\$ 1,363,231.00	11.34	\$ 1,274,344.30	\$ 155,277.05
Katherine Beck Consulting <i>Government Relations</i>	\$ 45,000.00	0.37	\$ 26,542.44	\$ 5,700.00
Quest Corporation of America <i>Public Involvement</i>	\$ 592,959.00	4.93	\$ 388,525.14	\$ 94,056.64
Uzzell Advertising <i>Public Relations, Web Maint.</i>	\$ 217,405.00	1.81	\$ 264,790.96	\$ 64,964.00
Welch & Ward Architects <i>Architecture, Recreation Facilities</i>	\$ 0.00	0.00	\$ 0.00	\$ 0.00
THC Right-of-Way Services, Inc. <i>ROW appraisal and acquisition</i>	\$ 2,379,149.00	19.79	\$ 1,295,563.84	\$ 502,951.41
Berryman & Henigar <i>Survey and mapping</i>	\$ 326,406.00	2.72	\$ 132,995.09	\$ 4,861.22
Weigal - Veasey <i>Property Appraisal</i>	\$ 0.00	0.00	\$ 0.00	\$ 0.00
Williams Earth Sciences <i>Geotechnical Services</i>	\$ 0.00	0.00	\$ 4,286.78	\$ 0.00
Allen Nobles & Associates <i>Survey</i>	\$ 0.00	0.00	\$ 73,726.00	\$ 0.00
THE LPA GROUP (PRIME) <i>Prime Consultant</i>	\$ 3,444,733.00	28.66	\$ 2,992,348.07	\$ 636,372.14
JACOBS (PRIME SUB) <i>Prime Subconsultant</i>	\$ 3,269,176.00	27.20	\$ 2,246,834.57	\$ 610,772.98
<hr/>				
Total Contract:	\$ 12,020,012.00	100.00%	\$ 8,921,247.62	\$ 2,102,866.94

MBE Goal:	\$ 1,863,101.86	15.50%
MBE to Date:	\$ 2,175,493.27	24.39%

## **GEC – GENERAL ENGINEERING CONSULTANT**

### **Activities Since Last Period:**

1. Attended regular meetings concerning E1-CCSE
2. Attended meeting with COT Growth Management on CCT Segment 2 pond capacity
3. Initiated design for N1 - Regional Pond Trail Park
4. Attended regular FDOT Leon County Construction Coordination Meeting
5. Continued coordination meetings on CCT-Segment 2 Design
6. Begin S.A. for remainder of E1 Segment 3 Pond construction
7. Continued coordination with St. Joe and COT on E2-CCSE issues
8. Continued coordination on N2-CCNW/SW Leon County GM, LCSD
9. Processed invoices with Fish/Wildlife for N1-CCNW pond plants
10. Initiated alum injection study for CCT Segment 2
11. Continued coordination of N1-CCNW landscape project with FDOT
12. Completed negotiations for S.A. with Lochner on N2-CCNW/SW
13. Attended Chattanooga trip
14. Finalized S.A. with Lochner to complete design of N2-CCNW/SW

### **Planned Activities for Next Period:**

1. Continue coordination with St. Joe on Segment 3 ponds - stockpile locations for E1-CCSE
2. Continue assistance with N1-CCNW
3. Initiate N1-CCNW Linear Landscape Design
4. Issue NTP for Design-Build for E2-CCSE
5. Continue coordination for Mahan Drive/US 90 Project
6. Develop JPA with COT and St. Joe Company on E2 ponds

### **Significant Issues and Resolutions:**

#### ISSUE

E1-CCSE Stormwater Facilities Master Plan.

#### RESOLUTION

Permit issued. Continue to coordinate with St. Joe Company on stockpile locations.

#### ISSUE

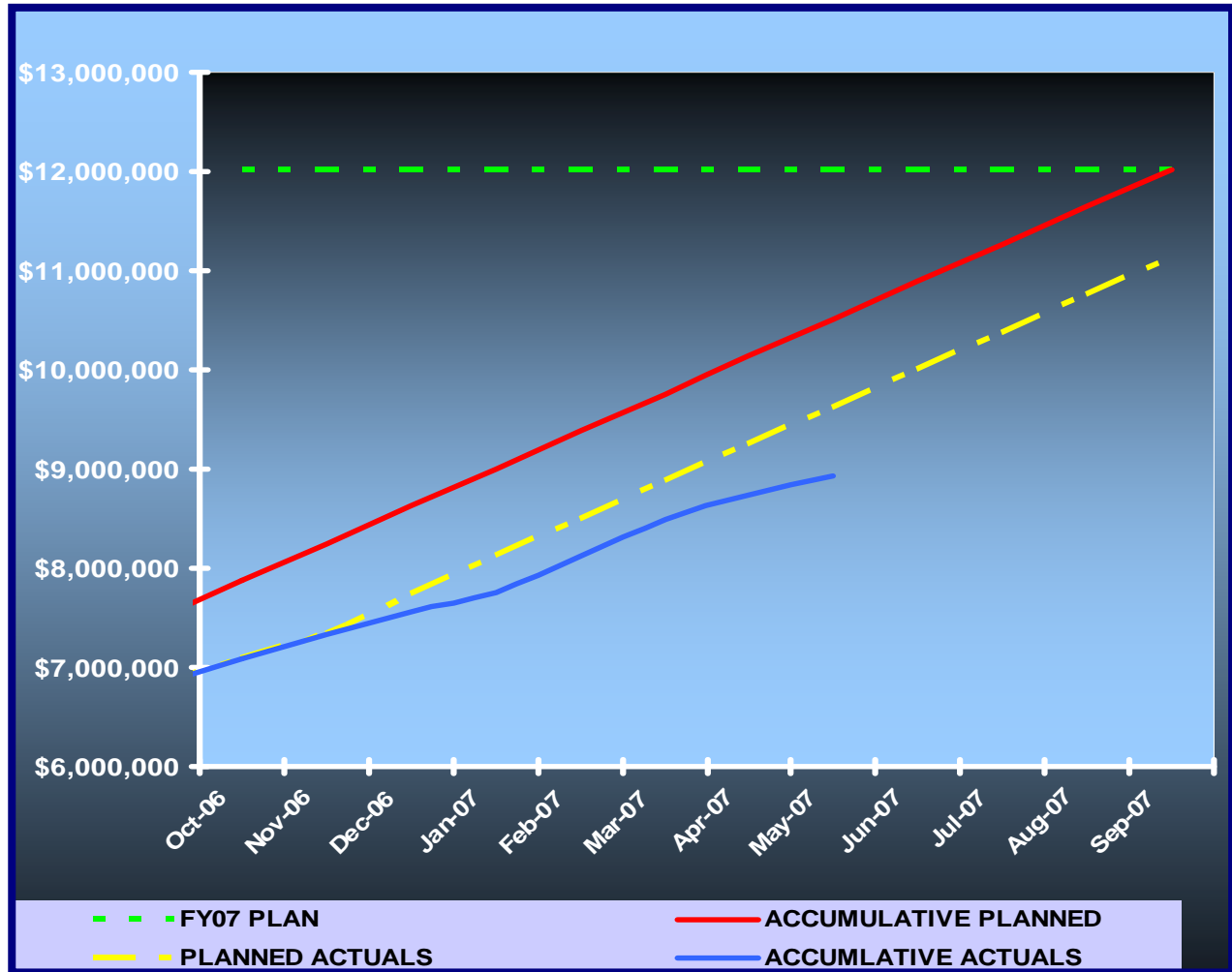
E2-CCSE City/St. Joe JPA needed prior to any permit for clearing.

#### RESOLUTION

Coordinating with COT and St. Joe to resolve issues.

**GEC – GENERAL ENGINEERING CONSULTANT**

**GEC Contract Financial Summary of Planned Vs. Actual Costs – FISCAL YEAR 2007**



## **GEC – PUBLIC INVOLVEMENT**

### **Activities Since Last Period:**

1. Organized and held Corridor Concepts Charette for W1-CCSW
2. Organized and held Agency Concepts Charrette follow-up for W1-CCSW
3. Attended TCC Meeting
4. Attended CAC Meeting
5. Attended two E-1 CEI Meetings
6. Organized and held Community Workshop for N1-CCNW/SW
7. Organized and held Partnering Meeting for E2-CCSE
8. Responded to public requests for information regarding Blueprint projects
9. Compiled information and newspaper clippings for project workbooks
10. Prepared Monthly Progress Report
11. Prepared Presentation for Monthly Progress Report
12. Attended IA Meeting

### **Planned Activities for Next Period:**

1. Begin organizing Public Meeting for E3-CCSE
2. Organize and hold Public Information Meeting for 60% design for E2-CCSE
3. Prepare for Monthly Progress Report
4. Prepare presentation for Monthly Progress Report
5. Continue to respond to public requests for information on Blueprint projects
6. Prepare presentation for FSITE Conference
7. Organize and attend Community Representative Meeting for W1-CCSW
8. Attend two CEI Meetings
9. Continue web page maintenance

## **N1 - CAPITAL CIRCLE NW – I-10 TO US 90**

### **Project Description:**

The proposed 1.991-mile roadway project (FPID: 219722-1) consists of upgrading the existing undivided rural facility to a six-lane divided urban (curb and gutter) facility. Upgrades to the West Tennessee, Tharpe, Hartsfield and Commonwealth intersections will also be included. The purpose of the roadway improvement project is to increase the capacity and safety of the existing highway. The roadway project was designed, let and constructed by the Florida Department of Transportation, with advance funding provided by the Blueprint 2000 Intergovernmental Agency.

### **CCNW – Current Configuration I-10 Interchange**





**N1 - CAPITAL CIRCLE NW - I-10 TO US 90**

MONTHLY PROJECT STATUS REPORT						
Week Ending 06/10/2007						
PROJECT ADMINISTRATION INFORMATION						
FINANCIAL PROJECT NO.:	219722-1-52-01 & 02			RESIDENT ENGINEER:	Steve Martin, P.E.	
CONTRACT NO.:	T3154			PROJECT ADMINISTRATOR:	Jerry McClure	
FEDERAL AID NO.:	N/A			CONTRACTOR:	M of Tallahassee, Inc.	
ORIGINAL CONTRACT AMOUNT (A) Bid:	\$25,462,923.43			CURRENT CONTRACT AMOUNT:	\$25,589,410.64	
COUNTY:	LEON			DESIGN FIRM	FDOT Roadway Design	
DESCRIPTION:	SR 263 (Capital Circle NW) from a Pt S of SR 10 (US90/W Tennessee St) to the SR 8 (I-10) West ramp					
CONTRACT TIME SUMMARY			PROGRESS SUMMARY		CURRENT	PREVIOUS
ORIGINAL DAYS	825		PLANNED	75.42%		71.19%
WEATHER	30		ACTUAL	85.90%		80.38%
GRANTED (S.A.)	0		CONTRACT TIME USED	72.87%		68.77%
GRANTED (F.S.A.)	0		EXPLANATION:			
GRANTED (OTHER)	0					
TOTAL CONTRACT	855					
DAYS USED	623		DATE SUMMARY			
TOTAL REMAINING	232		CONTRACT EXECUTED	9/15/2005		
SUSPENSION DAYS	0		NOTICE TO PROCEED	9/14/2005		
<b>PENDING DAYS</b>	0		CONTRACT START DATE	9/26/2005		
NUMBER OF AVAILABLE WORK DAYS THAT CONTRACTOR ELECTED TO PERFORM NO WORK	8		DATE WORK STARTED	9/26/2005		
			ANTICIPATED FINAL ACCEPT.	12/28/2007		
			CONTRACT TIME EXPIRATION	12/29/2007		
GRANTED DAYS SUMMARY						
STATUS	REASON			NUMBER OF DAYS		
Approved	Weather Days Granted by Weather Letter No. 3			3		
Approved	Weather Days Granted by Weather Letter No. 4			4		
Approved	Weather Days Granted by Weather Letter No. 5			2		
Approved	Weather Days Granted by Weather Letter No. 6			1		
Approved	Weather Days Granted by Weather Letter No. 8			4		
Approved	Weather Days Granted by Weather Letter No. 10			4		
Approved	Weather Days Granted by Weather Letter No. 13			4		
Approved	Weather Days Granted by Weather Letter No. 15			3		
Approved	Weather Days Granted by Weather Letter No. 16			3		
Approved	Weather Days Granted by Weather Letter No. 17			2		
<b>TOTAL NUMBER OF DAYS</b>				<b>30</b>		
SUPPLEMENTAL AGREEMENT SUMMARY						
SA #	# DAYS	Sub. Date	Exe. Date	Status	Reason/Description	Amount
999-25-01	0	5/8/2006	5/30/2006	Approved	Additional Erosion Control Measures	\$1,868.45
999-25-02	0	6/5/2006	6/13/2006	Approved	Addl Pay Items for Removable Work Zone Pavement Markings	\$43,430.00
999-25-03	0	7/13/2006	7/17/2006	Approved	Temporary Drainage Structures & Pipe	\$33,580.00
999-25-04	0	7/14/2006	7/17/2006	Approved	Relocation of Double-Post Sign	\$2,453.00
999-25-07	0	3/12/2007	3/21/2007	Approved	Removal of Existing Box Culvert	\$22,979.49
006	0	8/1/2006	7/21/2006	Approved	July 2005 Asphalt Specification Change	-\$23,382.06
009	0	9/7/2006	9/25/2006	Approved	Unilateral Pymt. - Add'l MOT	\$19,238.72
008	0	9/14/2006	10/3/2006	Approved	RWZPM's	\$20,921.80
012	0	1/8/2007	1/30/2007	Approved	Additional Water & Sewer Utilities	\$21,005.00
013	0	1/6/2007	1/29/2007	Approved	Base Group 9 - Limerock	-\$132,971.25
016	0	3/6/2007	3/6/2007	Approved	Type 1 Underdrain	\$56,000.00
017	0	3/15/2007	3/13/2007	Approved	Contingency Supplemental Agreement	\$150,000.00
018	0	4/4/2007	3/23/2007	Approved	Addl Sewer Services - COT - @ Carroll's Boot Country	\$15,675.00
<b>Total Supplemental Agreement Amount-to-Date</b>						<b>\$230,798.15</b>

**N1 - CAPITAL CIRCLE NW – I-10 TO US 90**

**CCNW Intersection at Commonwealth Boulevard**



**N1 - CAPITAL CIRCLE NW – I-10 TO US 90**

**CCNW Between Commonwealth and Hartsfield**



**N1 - CAPITAL CIRCLE NW – I-10 TO US 90**

**Intersection of CCNW and Hartsfield**



**N1 - CAPITAL CIRCLE NW - I-10 TO US 90**

**Regional Stormwater Facility Pond #1**



---

## **N1 - CAPITAL CIRCLE NW – I-10 TO US 90**

### **Project Status:**

As of June 10th, 2007: (next Monthly Progress Payment cutoff is 6/17/07)

623 of 855 Total Contract Days have been used (855 Total Days include 30 Weather Days granted to date);

Planned Progress = 75.42%

Actual Progress = 85.90%

Contract Time used = 72.87%

Contract Executed on 8/15/05;

Notice To Proceed on 9/14/05;

Contract Start Date on 9/26/05;

Anticipated Final Acceptance = 12/28/07 (\*)

Contract Time expiration = 12/29/07(\*)

(\*) The Contractor is ahead of schedule and is pursuing an early-finish incentive contract bonus, and is hoping to complete the project by in July 11th, 2007.

Original Contract Amount = \$25,462,923.43

Current Contract Amount = \$25,589,410.64

Supplemental Agreement Amount to Date = \$230,798.15

**N1 - CAPITAL CIRCLE NW – I-10 TO US 90**

**Right-Of-Way Status Report:**

CLOSED - (IN POSSESSION)	100
AGREEMENTS SECURED BUT NOT CLOSED	21
DONATION	4
NEGOTIATING/PREPARING FOR SUIT	0
TOTAL PARCELS ON PROJECT	125

As of May 2007 FDOT reported:

1. Right of Way cost expended so far is approximately \$44,800,000
2. There are 21 parcels remaining to be settled through mediation
3. The total Right of Way cost is estimated to be \$47,831,058

**N2 - CAPITAL CIRCLE NW/SW – SR 371 (ORANGE AVE.) TO US 90**

**Project Description:**

The Expanded Project Development and Environment (PD&E) Study limits for this 2.9 mile project extend from Orange Avenue (SR 371) to Tennessee Street (US 90/SR 10). This project also includes the preparation of approximately 60% design plans, etc.

**Project Personnel:**

<b>Blueprint 2000:</b>	<b>Project Manager:</b>	Paul Hiers
<b>H.W. Lochner:</b>	<b>Project Manager:</b>	Hugh Williams

**Contract Cost & Schedule Status - Agreement No. 772/Authorization 1 - As of 6/1/2007**

Contract Commencement:	10May04
Contract Completion:	10May07
Percent of Work Performed:	76.3%
Original Contract Amount:	\$ 1,921,585.90
Executed Supplemental Agreements:	\$ 1,195,430.90
Pending Supplemental Agreements:	\$ 0.00
Current Contract Amount:	\$ 3,117,016.80
Invoiced to Date:	\$ 2,672,911.45
Remaining Contract Amount:	\$ 444,105.35
Percent of Contract Amount Complete:	85.8%
Original Contract Time:	1095 Days
Contract Time Extensions:	160 Days
Current Contract Time:	1255 Days
Contract Time Expended:	1117 Days
Contract Time Remaining:	138 Days
Percent Contract Time Expended:	89.0%

**Schedule Milestones:**

30% Roadway Plans	28Aug06
Final Environmental Documents	20Jun06
Final Preliminary Engineering Report	20Jun06
60% Roadway Plans	30Apr07
2nd Draft ROW Maps	30Apr07
Final ROW Maps	30Aug07
Location Design Concept Approval (LDCA)	22Aug06
VE Complete	27Oct06



**N2 - CAPITAL CIRCLE NW/SW – SR 371 (ORANGE AVE.) TO US 90**

Design Subconsultant Participation:	Contract Amt	% of Design Contract	ETD	YTD
Environmental Geotechnical Specialists				
<i>Geotechnical</i>	\$ 444,860.75	14.27	\$ 335,783.10	\$ 278,851.92
Diversified Design & Drafting Services, Inc.				
<i>Survey and ROW Mapping</i>	\$ 688,044.64	22.07	\$ 602,088.46	\$ 412,801.37
Archaeological Consultants, Inc.				
<i>Cultural Resource Assessment</i>	\$ 19,588.27	0.63	\$ 10,947.15	\$ 547.36
HNTB/TEI				
<i>Traffic Analysis</i>	\$ 90,310.59	2.90	\$ 90,310.59	\$ 11,606.21
American Acquisition Group				
<i>Right of Way</i>	\$ 97,873.48	3.14	\$ 94,046.22	\$ 8,071.70
HW LOCHNER (PRIME)				
<i>Prime Consultant</i>	\$ 1,776,339.07	56.99	\$ 1,539,735.93	\$ 876,689.76
<hr/>				
Total Design Contract:	\$ 3,117,016.80	100.00%	\$ 2,672,911.45	\$ 1,588,568.32

Design MBE Goal:	\$ 483,137.60	15.50%
Design MBE to Date:	\$ 948,818.71	35.50%

**Project Status:**

Conducting Pond & Mitigation analysis and design  
 50% Roadway Plans Submitted May 10, 2007  
 ROW Acquisition process on-going  
 Proceeding toward full 60% plans submittal in October, 2007

---

## **N2 - CAPITAL CIRCLE NW/SW – SR 371 (ORANGE AVE.) TO US 90**

### **Activities Since Last Period:**

1. Submitted 60% Roadway Plans (Partial)
2. Continued analysis and design of the pond and mitigation sites
3. Continued survey, geotechnical investigation
4. Updated the Natural Features Inventory report based on review comments

### **Planned Activities for Next Period:**

1. Resubmit Natural Features Inventory
2. Continue field work for geotechnical activities
3. Continue to assist with ROW acquisition
4. Resubmit the Pavement Design
5. Continue the pond and mitigation design and permit package
6. Respond to Plans review comments

### **Significant Issues and Resolutions:**

#### ISSUE

Regional Pond #1

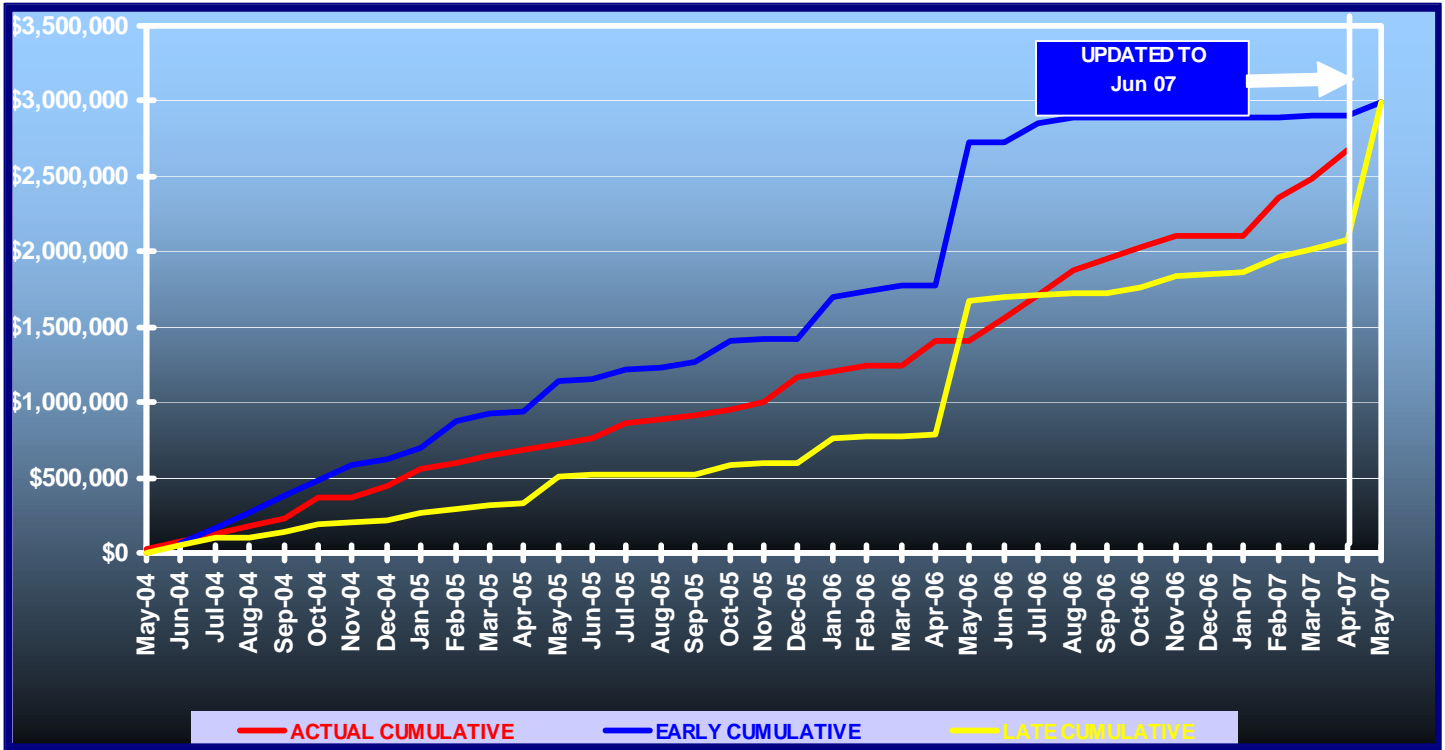
Additional compensating treatment volume will be needed to cover from CSX RR to Shuler Road.

#### RESOLUTION

Determining the treatment volume needed through coordination with DEP and County Growth Management.

**N2 - CAPITAL CIRCLE NW/SW – SR 371 (ORANGE AVE.) TO US 90**

**Contract Financial Summary of Planned Vs. Actual Costs**



**N2 - CAPITAL CIRCLE NW/SW – SR 371 (ORANGE AVE.) TO US 90**

**Right-Of-Way Status Report:**

CLOSED - (IN POSSESSION)	0
AGREEMENTS SECURED BUT NOT CLOSED	0
DONATION	0
NEGOTIATING/PREPARING FOR SUIT	138
<b>TOTAL PARCELS ON PROJECT</b>	<b>138</b>

1. Blueprint has identified the former Broadmoor Estates Parcel as a parcel needed for a pond site. The Tallahassee Regional Airport (TRA) acquired this parcel. TRA used City of Tallahassee and FAA Funds to acquire this parcel. If the parcel is sold or transferred from TRA, ownership (even to another city agency such as Blueprint) the parcel must be appraised and conveyed at fair market value. Funds received from the conveyance would reimburse the FAA. Appraisals by Blueprint and the City of Tallahassee have been completed. TRA has received FAA's concurrence to convey this parcel to Blueprint. The City of Tallahassee Real Estate Department has begun the process of getting City Council approval.
2. Blueprint received approval from the IA at the September 16, 2006 meeting to acquire 61 parcels. The process of obtaining appraisals on these parcels has begun. In approximately 60 - 90 days we should start to receive completed appraisals and we will begin negotiations with the property owners.
3. At the February 26, 2007 IA meeting Blueprint was authorized to begin the acquisition process for an additional 77 parcels.

**W1 - CAPITAL CIRCLE SW – CRAWFORDVILLE ROAD TO SR 20**

**Project Description:**

A Project Development and Environment (PD&E) Study of Capital Circle (SR 263) between Crawfordville Road (SR 61 US 319) and Blountstown Highway (SR 20) a distance of approximately 6.7 miles. The PD&E study is being conducted in accordance with Federal Highway Administration (FHWA), Blueprint 2000 Agency, and Florida Department of Transportation (FDOT) guidelines. The study evaluates alternative alignments as well as the existing alignment. Several viable alternatives are being developed and evaluated in order to address the project needs while taking into account the Blueprint 2000 & Beyond “Project Definitions Report”, prepared by the Economic and Environmental Consensus Committee in 1999, and the Lake Bradford Sector Plan, conducted by the Tallahassee/Leon County Planning Department.

**Project Personnel:**

<b>Blueprint 2000:</b>	<b>Planning Manager:</b>	Dave Bright
	<b>Project Manager:</b>	Paul Hiers
<b>Kimley-Horn &amp; Assoc.:</b>	<b>Project Manager:</b>	Steve Godfrey

**Contract Cost & Schedule Status - Agreement No. 1284/Authorization 1 - As of 5/31/2007**

Contract Commencement:	22Aug06
Contract Completion:	22Aug09
Percent of Work Performed:	9.6%
Original Contract Amount:	\$ 2,672,271.68
Executed Supplemental Agreements:	\$ 0.00
Pending Supplemental Agreements:	\$ 0.00
Current Contract Amount:	\$ 2,672,271.68
Invoiced to Date:	\$ 749,767.60
Remaining Contract Amount:	\$ 1,922,504.08
Percent of Contract Amount Complete:	28.1%
Original Contract Time:	1096 Days
Contract Time Extensions:	0 Days
Current Contract Time:	1096 Days
Contract Time Expended:	282 Days
Contract Time Remaining:	814 Days
Percent Contract Time Expended:	25.7%

**Schedule Milestones:**

Consultant Selected	26May06
Study Begins	22Aug06
Agency Kick-off Meeting	19Oct06
Public Kick-off Meeting	19Oct06
Community Mini-Charrettes	15Jan07
Community Meeting	12Apr07
Corridor/Concepts Charrette	10May07
Alternatives Public Information Meeting	07Apr08
Preferred Alternative Public Meeting	10Dec08
Public Hearing	01Jun09

**W1 - CAPITAL CIRCLE SW – CRAWFORDVILLE ROAD TO SR 20**

<b>Consultant Participation:</b>	<b>Contract Amt</b>	<b>% of Contract</b>	<b>ETD</b>	<b>YTD</b>
Target Copy and Sign Printers <i>Printing</i>	\$ 30,000.00	1.12	\$ 19,998.23	\$ 19,998.23
Keystone Field Services <i>Relocation</i>	\$ 35,000.00	1.31	\$ 0.00	\$ 0.00
Environmental and Geotechnical Specialists <i>Geotech</i>	\$ 59,830.00	2.24	\$ 7,918.28	\$ 7,918.28
Diversified Design & Drafting Services <i>Survey</i>	\$ 127,874.94	4.79	\$ 0.00	\$ 0.00
StategyWise, LLC <i>Economic Development</i>	\$ 19,500.00	0.73	\$ 0.00	\$ 0.00
Hamilton Smith Assoc. <i>Traffic</i>	\$ 18,600.00	0.70	\$ 18,600.00	\$ 18,600.00
Registe, Sliger Engineering <i>Structures</i>	\$ 123,376.71	4.62	\$ 16,779.23	\$ 16,779.23
KIMLEY-HORN & ASSOC (PRIME) <i>Prime</i>	\$ 1,596,614.64	59.75	\$ 566,496.60	\$ 515,883.92
Dr. Wayson <i>Noise</i>	\$ 30,147.25	1.13	\$ 0.00	\$ 0.00
Hass Center <i>Economic Development</i>	\$ 37,200.00	1.39	\$ 0.00	\$ 0.00
Florida Acquisition & Appraisal <i>Appraisal/Acquisition</i>	\$ 235,804.91	8.82	\$ 33,074.33	\$ 33,074.33
Biological Research Assoc. <i>Water Quality</i>	\$ 105,815.50	3.96	\$ 39,231.16	\$ 39,231.16
Search, Inc <i>Cultural Resource/Archaeological</i>	\$ 53,826.73	2.01	\$ 0.00	\$ 0.00
Camp, Dresser & McKee <i>Drainage &amp; Pond Design</i>	\$ 198,681.00	7.43	\$ 47,669.77	\$ 47,669.77
<b>Total Contract:</b>	<b>\$ 2,672,271.68</b>	<b>100.00%</b>	<b>\$ 749,767.60</b>	<b>\$ 699,154.92</b>

<b>MBE Goal:</b>	<b>\$ 414,202.11</b>	<b>15.50%</b>
<b>MBE to Date:</b>	<b>\$ 63,295.74</b>	<b>8.44%</b>

## **W1 - CAPITAL CIRCLE SW – CRAWFORDVILLE ROAD TO SR 20**

Kimley-Horn and Associates began the Capital Circle Southwest PD&E study in late August, 2006.

The Public and Agency Kickoff Meetings were conducted in October, 2006.

Six Community Forum Meetings were conducted concluding with a Town Hall Meeting held in April, 2007.

The Concept Charrettes were held on May 10th and 12th, 2007

Six Community Representatives meetings have been held through the month of May 2007.

The project has begun the analysis phase using the alternatives alignments established through the Concept Charrette process.

### **Activities Since Last Period:**

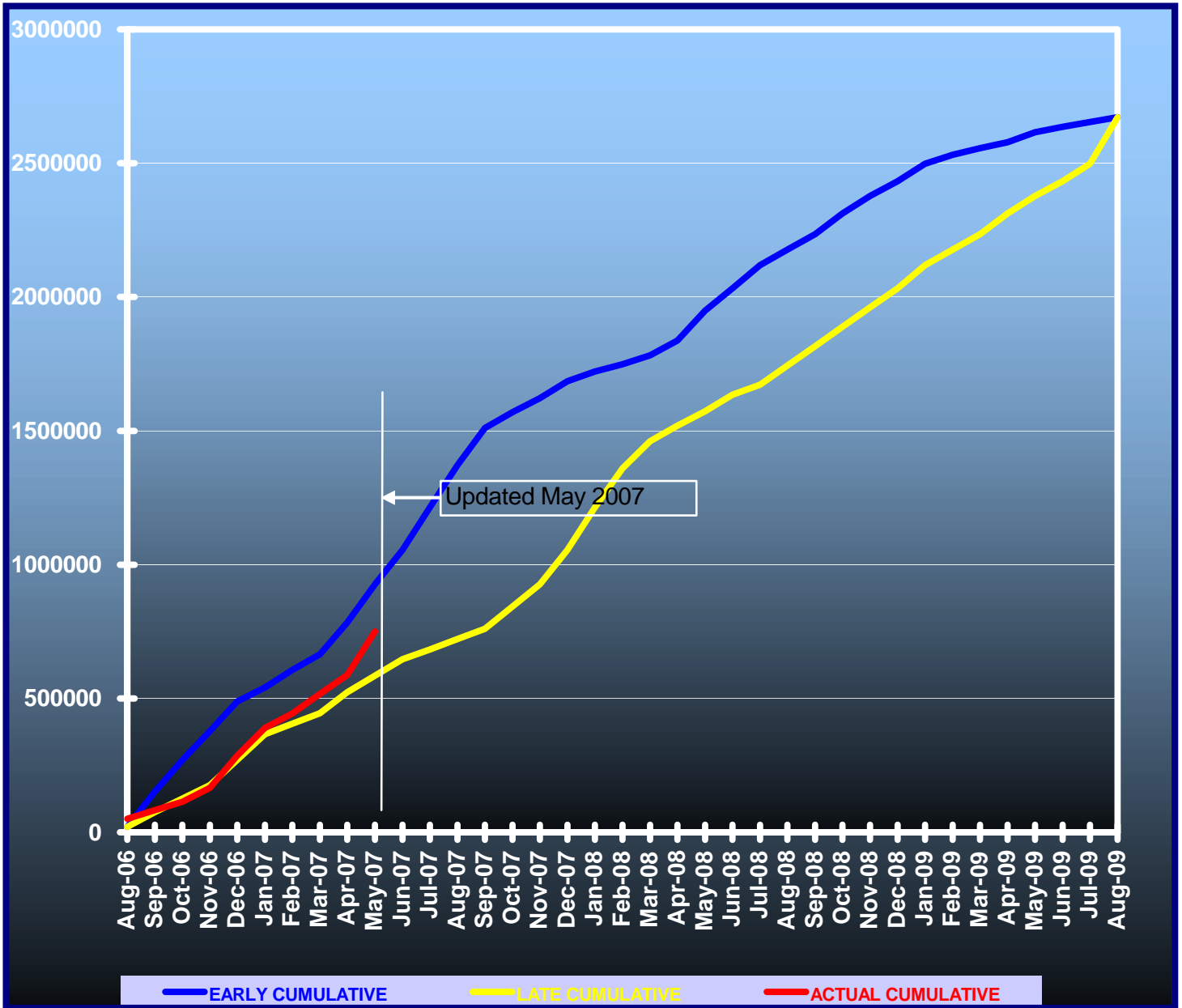
1. Finalized draft evaluation Criteria to present to the IA
2. Prepared for and conducted the Concepts Charrette
3. Prepared for and conducted Community Representatives Meeting #6
4. Refined corridors from Charrette
5. Conducted a coordination meeting with Government Agencies
6. Provided web page updates
7. Attended CAC and TCC Meetings
8. Began analysis of Black Swamp and Grassy Lake, Survey and Geotechnical, and identification of Pond Sites

### **Planned Activities for Next Period:**

1. Schedule coordination meeting with FHWA and FDOT D3
2. Prepare for and conduct Community Representatives Meeting #7
3. Conduct field review with CR group
4. Begin developing plan for recommended criteria weighting
5. Continue developing the project typical section and design criteria
6. Continue work on water quality report and contamination screening report
7. Continue the identification of preliminary Stormwater treatment locations

**W1 - CAPITAL CIRCLE SW – CRAWFORDVILLE ROAD TO SR 20**

**Contract Financial Summary of Planned Vs. Actual Costs**





**E3 - CAPITAL CIRCLE SE – WOODVILLE HWY TO CRAWFORDVILLE RD**

**Project Description:**

This project proposes to widen approximately 1.53 miles of the existing two-lane Capital Circle SE from Woodville Highway to Crawfordville Road to an ultimate multi-lane urban facility.

FDOT Roadway ID: 55002000 SR 263 from MP 0.200 to MP 1.730.

**Project Personnel:**

<b>Blueprint 2000:</b>	<b>Design Manager:</b>	Marek Romanowski
	<b>Project Manager:</b>	Gary Phillips
<b>URS Corporation:</b>	<b>Project Manager:</b>	Chris Lovett

**Contract Cost & Schedule Status - Agreement No. 1167/Authorization 1 - As of 5/9/2007**

Contract Commencement:	02Feb06
Contract Completion:	12Sep07
Percent of Work Performed:	95.0%
Original Contract Amount:	\$ 885,689.21
Executed Supplemental Agreements:	\$ 49,905.00
Pending Supplemental Agreements:	\$ 0.00
Current Contract Amount:	\$ 935,594.21
Invoiced to Date:	\$ 856,617.16
Remaining Contract Amount:	\$ 78,977.05
Percent of Contract Amount Complete:	91.6%
Original Contract Time:	587 Days
Contract Time Extensions:	0 Days
Current Contract Time:	587 Days
Contract Time Expended:	461 Days
Contract Time Remaining:	126 Days
Percent Contract Time Expended:	78.5%

**Schedule Milestones:**

Selection of Design Consultant	16Aug05
IA authorizes Blueprint to execute Contract with Design Consultant	19Sep05
Contract and LOA#1 are executed	02Feb06
Submit Typical Section Package	06Mar06
Submit Pond Siting Report	05Jun06
Submit ROW Control Survey Maps	03Jul06
Submit Phase I Plans	24Oct06
Submit Pavement Design Package	02Nov06
Submit Phase II Plans	20Mar07
Submit Phase II ROW Maps	20Mar07
Revise and Finalize Phase II Plans	07May07
Submit Phase III (90%) ROW Maps	11Jun07
Submit Phase IV (100%) ROW Maps	09Jul07

**E3 - CAPITAL CIRCLE SE – WOODVILLE HWY TO CRAWFORDVILLE RD**

Design Subconsultant Participation:	Contract Amt	% of Design Contract	ETD	YTD
EGS <i>Geotechnical</i>	\$ 67,411.46	7.21	\$ 59,209.30	\$ 59,209.30
ACI <i>Cultural Resource (Archaeological)</i>	\$ 8,153.18	0.87	\$ 0.00	\$ 0.00
Mehta <i>Survey</i>	\$ 91,944.24	9.83	\$ 91,944.24	\$ 91,944.24
DRMP <i>Survey and Mapping</i>	\$ 204,310.03	21.84	\$ 155,559.10	\$ 155,559.10
URS (Prime) <i>Design, Environmental, Signalization, Landscaping</i>	\$ 563,775.30	60.26	\$ 549,904.52	\$ 549,904.52
<hr/>				
Total Design Contract:	\$ 935,594.21	100.00%	\$ 856,617.16	\$ 856,617.16

Design MBE Goal:	\$ 145,017.10	15.50%
Design MBE to Date:	\$ 151,153.54	17.65%

**Project Status:**

Contract and Letter of Authorization was executed on February 2, 2006  
 Part A - 60% design plans - total cost is \$935,594.21

**Activities Since Last Period:**

1. Reviewed project video and provided comments back to URS
2. Met with USFS a second time to discuss potential mitigation measures for striped newt and gopher frog
3. Completed Traffic Conditions Update report for IA review

**Planned Activities for Next Period:**

1. Review all comments and responses before finalizing 60% plans
2. Respond to review comments on video and revise accordingly
3. Prepare exhibits/graphics to support 60% Design Public Meeting schedule for July 16
4. Submit Phase III (90%) ROW Maps, legal descriptions and parcel sketches

**E3 - CAPITAL CIRCLE SE – WOODVILLE HWY TO CRAWFORDVILLE RD**

**Significant Issues and Resolutions:**

ISSUE

Roadway Improvement and Funding Options

RESOLUTION

Design Contract: Phase II (60%) Plans and Right-of-Way Maps will be completed the end of March 2007. Blueprint 2000 will stop the design at 60% and not authorize Part B of the Contract. This approach will allow Blueprint 2000 the ability to initiate right-of-way acquisition or move to a design-build contract, contingent upon available resources.

ISSUE

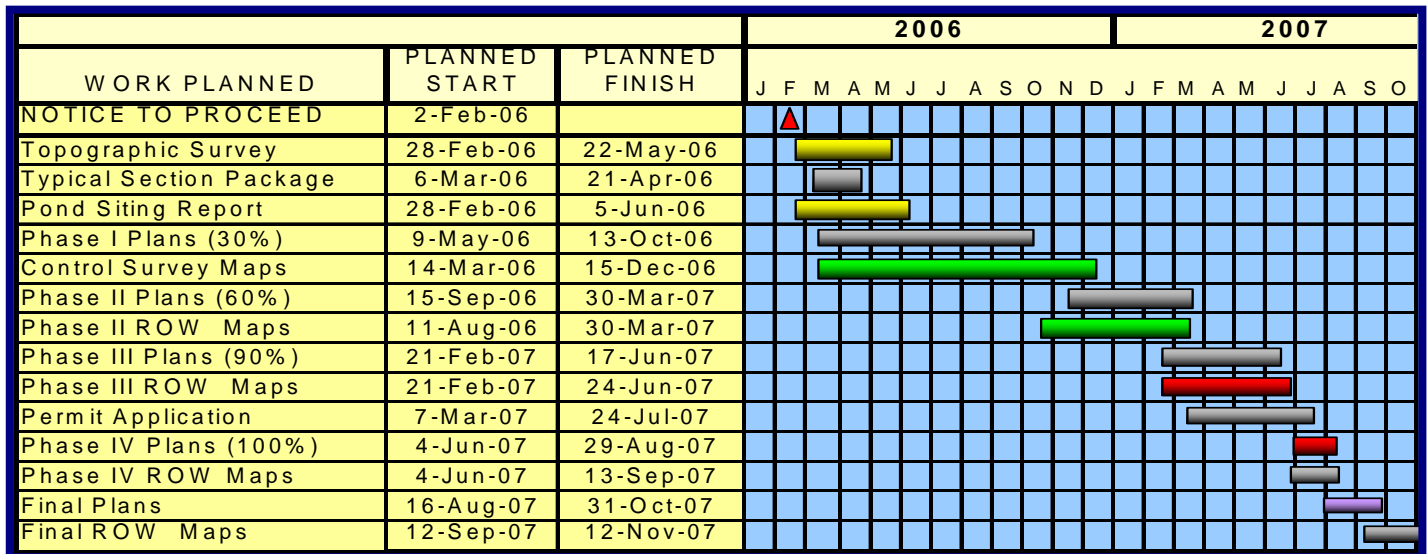
Flea Market Tract - Linear Pond Design

RESOLUTION

USFS Legislation (HR 5725) that would allow the USFS to sell the Flea Market Tract directly to a public or private entity was not acted upon by the 109th Congress. Blueprint was informed that this legislation must be "reintroduced" to the new 110th Congress and that this process was underway.

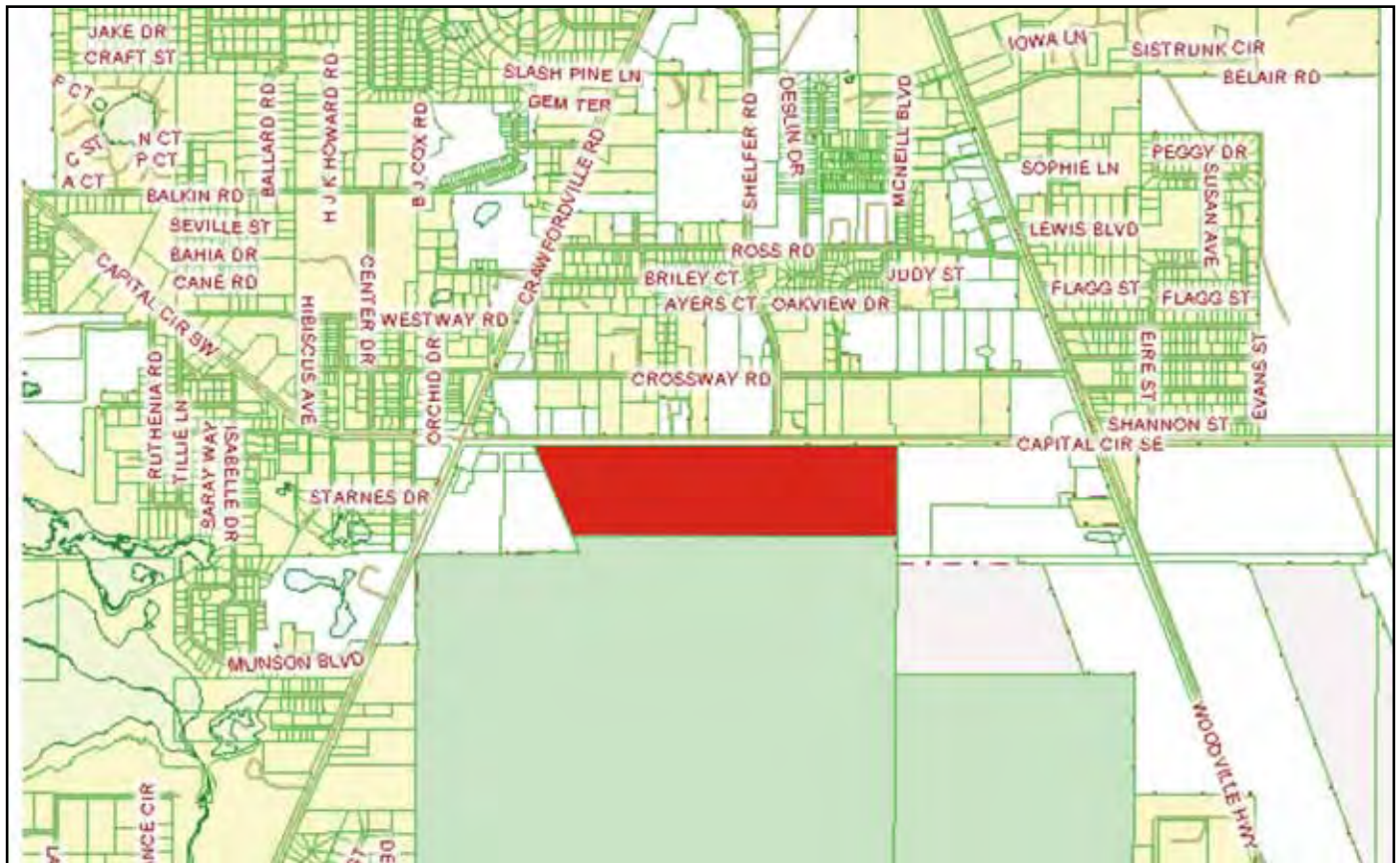
Blueprint met with USFS to discuss comments from their Biologist related to protecting the Striped Newt and Gopher Frog from the proposed stormwater ponds.

**Schedule**



**E3 - CAPITAL CIRCLE SE – WOODVILLE HWY TO CRAWFORDVILLE RD**

**Right-Of-Way Status Report:**



USFS Legislation (HR 5725) that would allow the USFS to sell the Tract of land directly to a public or private entity was not acted upon by the 109th Congress. Blueprint was informed that this legislation must be "reintroduced" to the new 110th Congress and that this process was underway.

## **E2 - CAPITAL CIRCLE SE – WOODVILLE HIGHWAY TO TRAM ROAD**

### **Project Personnel:**

<b>Blueprint 2000:</b>	<b>Program Manager</b>	Bill Little, P.E.
	<b>Project Manager:</b>	Marek Romanowski
<b>Sandco Inc./Genesis:</b>	<b>Project Manager:</b>	Bob Myrick
	<b>Design PM:</b>	Dave Snyder

### **Contract Cost & Schedule Status - Agreement No.**

Blueprint 2000 staff is performing current activities (DRMP Design Contract is closed).

### **Project Description:**

This project proposes to widen approximately 2.2 miles of the existing two-lane Capital Circle SE from Woodville Highway to Tram Road to an ultimate six-lane facility, mileposts 0.0 to 2.12. In addition, a transitional segment west of Woodville Highway (SR 263 MP 0.0 to approximately MP 0.2).

### **Schedule Milestones:**

Execute Contract	15May07
Partnering Meeting	07Jun07

### **Project Status:**

Contract has been fully executed. We expect to issue NTP by July 10, 2007.

### **Activities Since Last Period:**

1. Design-Build Contract fully executed
2. Conducted Expedition/Primavera P3EC coordination meeting
3. Held Partnering meeting on June 7, 2007

### **Planned Activities for Next Period:**

1. Receive schedule from Sandco/Genesis 10 days after contract execution
2. Perform initial schedule review to establish project baseline
3. Pre-Construction Meeting
4. Negotiate man hours for CE&I firm and execute Letter of Authorization for CE&I work
5. Establish timetable for regular design reviews

---

## **E2 - CAPITAL CIRCLE SE – WOODVILLE HIGHWAY TO TRAM ROAD**

### **Significant Issues and Resolutions:**

#### ISSUE

The COT Engineering Department requested price proposals for a permanently installed irrigation system along the corridor of CCSE from Woodville Highway to Tram Road.

#### RESOLUTION

Blueprint 2000 requested, in the City's behalf, a price proposal from Sandco/Genesis. A price Proposal has been received. Subsequently Blueprint 2000 has asked for a more detailed price proposal which has been received and is currently under review by COT Engineering Dept. Issue will continue to be monitored and will result in a supplemental agreement for additional work.

**E2 - CAPITAL CIRCLE SE – WOODVILLE HIGHWAY TO TRAM ROAD**

**Right-Of-Way Status Report:**

CLOSED - (IN POSSESSION)	5
AGREEMENTS SECURED BUT NOT CLOSED	0
DONATION	6
NEGOTIATING/PREPARING FOR SUIT	14
TOTAL PARCELS ON PROJECT	25

This project has 25 parcels.

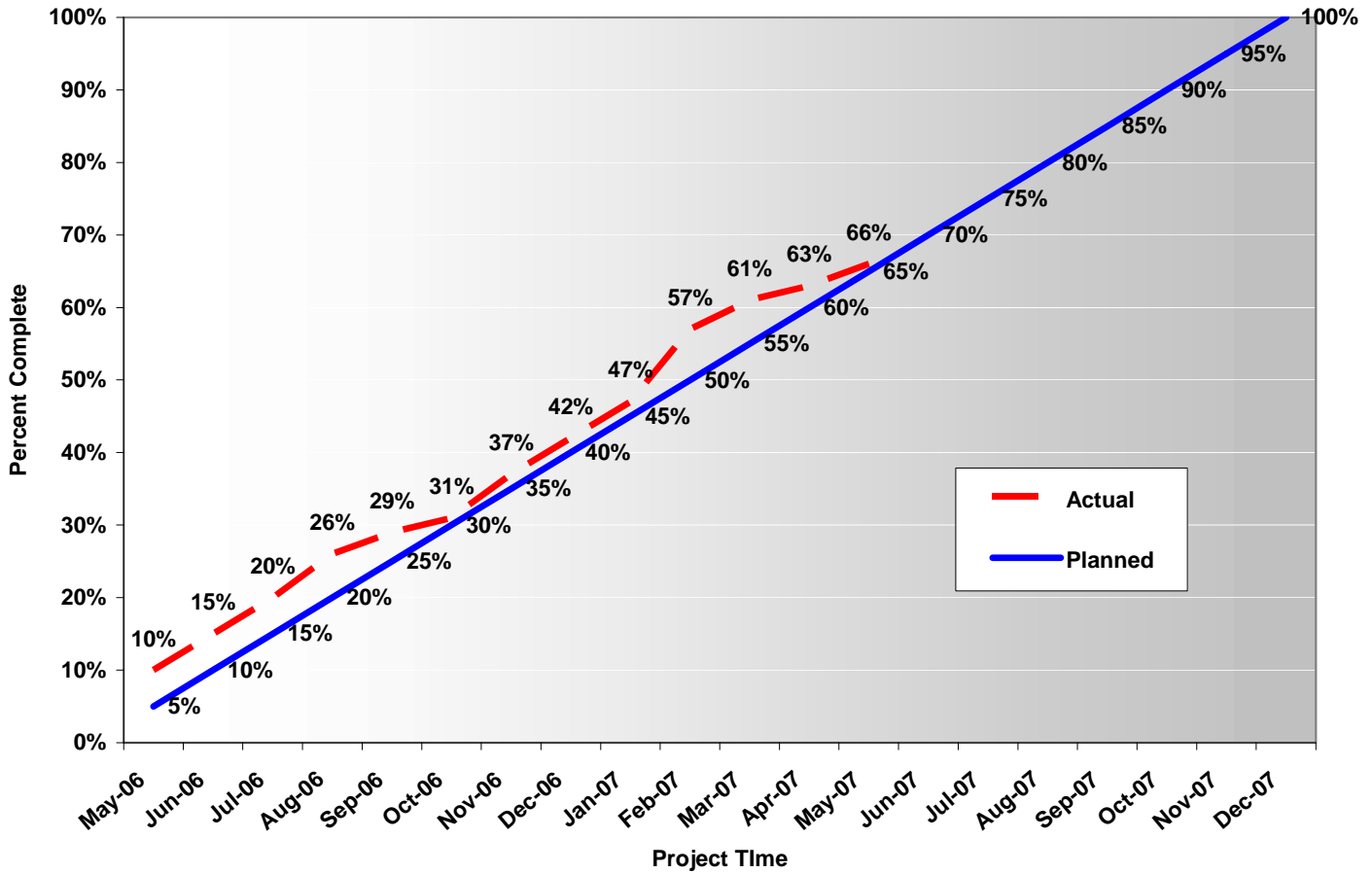
Blueprint expects seven right of way donations and has received one. The remaining six are expected by the end of June 2007.

Blueprint has received twelve parcel appraisals and review appraisals; and offers have been made on each. From this twelve; Blueprint closed five parcels, and has agreements on two parcels, and expects to close by the end of June 2007. Negotiations are on going for the remaining parcels.

There are six parcels awaiting completion of appraisals and review appraisals, and are expected to be received in the next 60 days. Offers will be made on the remaining six parcels as soon as possible.

**E2 - CAPITAL CIRCLE SE – WOODVILLE HIGHWAY TO TRAM ROAD**

**Right-of-Way Aquisition Effort  
 Capital Circle Southeast**





## E1 - CAPITAL CIRCLE SE – TRAM ROAD TO CONNIE DRIVE

### Project Description:

The proposed 3.44-mile project along Capital Circle Southeast (US 319/SR261) extends from south of Tram Road to Connie Drive (milepost 1.931 and 5.371) in Leon County and includes expanding the existing two-lane undivided rural roadway to a six-lane divided urban (curb and gutter) facility. The purpose of the roadway improvement project is to increase the capacity and safety of the existing highway. New traffic signals, including ITS features, will be provided at six intersections: Tram Road, Shumard Oak Boulevard, Merchants Row Drive, Blair Stone Road, Orange Avenue and Old St. Augustine Road. The project also includes significant landscaping as well as pedestrian, bicycle and recreational amenities.

### Project Personnel:

<b>Blueprint 2000:</b>	<b>Program Manager:</b>	Bill Little
	<b>Project Manager:</b>	Marek Romanowski
	<b>Construction Manager:</b>	Marcus Kelly
<b>PBS&amp;J:</b>	<b>Project Manager:</b>	Steve Martin

### Contract Cost & Schedule Status - As of 6/13/2007

Contract Commencement:	10Jan05
Contract Completion:	02Oct07
Percent of Work Performed:	74.4%
Original Contract Amount:	\$ 30,796,339.34
Executed Supplemental Agreements:	\$ 5,818,213.15
Pending Supplemental Agreements:	\$ 181,156.30
Current Contract Amount:	\$ 36,614,552.49
Invoiced to Date:	\$ 27,253,709.33
Remaining Contract Amount:	\$ 9,360,843.16
Percent of Contract Amount Complete:	74.4%
Original Contract Time:	995 Days
Contract Time Extensions:	151 Days
Current Contract Time:	1146 Days
Contract Time Expended:	884 Days
Contract Time Remaining:	262 Days
Percent Contract Time Expended:	77.1%

**E1 - CAPITAL CIRCLE SE – TRAM RD TO CONNIE DR**

**Schedule Milestones:**

Intergovernmental Agency (IA) Approval	20Sep04
Execute Contract	22Dec04
Notice to Proceed	10Jan05
Right of Way Acquisition, Phase 1	01May05
Right of Way Acquisition, Phase 2	01Sep06
60% Design Submission - Segment I	28Feb05
90% Design Submission - Segment II	15Apr05
Final Design Submission - Segment II	25Jul05
90% Design Submission - Segment IV	30Aug05
90% Design Submission - Segment III	05Oct05
90% Design Submission - Segment I	14Feb06
Final Design Submission - Segment IV	24May06
Final Design Submission - Segment III	15Aug06
Final Design Submission - Segment I	17May06
Contract Completion	25Feb08

<b>Design Subconsultant Participation:</b>	<b>Contract Amt</b>	<b>% of Design Contract</b>	<b>ETD</b>	<b>YTD</b>
<b>Diversified Design &amp; Drafting Services, Inc.</b>				
<i>Design survey</i>	\$ 111,758.50	0.31	\$ 77,230.00	\$ 0.00
Allen Nobles & Associates, Inc.				
<i>Tree survey for permit application</i>	\$ 18,000.00	0.05	\$ 18,000.00	\$ 18,000.00
<b>Environmental &amp; Geotechnical Specialists, Inc.</b>				
<i>Geotechnical design services</i>	\$ 163,985.26	0.45	\$ 163,985.26	\$ 2,677.26
<b>CMTS Florida, LLC</b>				
<i>Inspection services</i>	\$ 210,000.00	0.57	\$ 122,436.00	\$ 103,704.00
<b>Registe Sliger Engineering, Inc.</b>				
<i>Structural design</i>	\$ 9,898.58	0.03	\$ 8,017.85	\$ 6,137.12
<b>PBS&amp;J (Design Lead)</b>				
<i>Design</i>	\$ 1,503,957.66	4.11	\$ 1,473,844.16	\$ 453,045.70
<hr/>				
Total Design Contract:	\$ 2,017,600.00	5.52%	\$ 1,863,513.27	\$ 583,564.08

Design MBE Goal:	\$ 312,728.00	15.50%
Design MBE to Date:	\$ 371,669.11	19.94%

**E1 - CAPITAL CIRCLE SE – TRAM RD TO CONNIE DR**

**CONSTRUCTION:**

Construction Subconsultant Participation:	Contract Amt	% of Const Contract	ETD
Gains & Son Striping	\$ 863,382.92	2.50	\$ 624,490.88
Construction Support Southeast	\$ 1,694,000.00	4.90	\$ 1,085,110.70
All American Ford	\$ 223,761.19	0.65	\$ 223,761.19
Ingram Signalization	\$ 2,371,960.00	6.86	\$ 827,400.23
Greenways of America	\$ 1,400,000.00	4.05	\$ 627,773.37
Hale Contracting	\$ 150,000.00	0.43	\$ 67,557.25
Florida Developer	\$ 175,000.00	0.51	\$ 97,483.80
Terry's Trucking	\$ 1,339,859.08	3.87	\$ 1,339,859.08
Total Construction Contract: \$ 7,445,604.11 23.77% \$ 4,888,436.50			

Construction MBE Goal:	\$ 7,261,664.02	21.00%
Construction MBE to Date:	\$ 4,888,436.50	19.25%

**M. Inc. Contract including COT Water Utility Additional Work**

Total Construction Contract:  
 \$34,579,352.49

Const. Invoiced to Date: \$25,390,196.06  
 Const. MBE Invoice to Date: \$4,888,436.50

<b>Construction MBE Goal:</b>	<b>\$ 7,261,664.02</b>	<b>21.00%</b>
<b>Construction MBE to Date:</b>		<b>19.25%</b>

**M. Inc. Contract**

Total Construction Contract:  
 \$29,132,815.28

Const. Invoiced to Date: \$20,949,748.76  
 Const. MBE Invoice to Date: \$4,888,436.50

<b>Construction MBE Goal:</b>	<b>\$ 6,117,891.21</b>	<b>21.00%</b>
<b>Construction MBE to Date:</b>		<b>23.33%</b>

*Please Note: The state-wide certified MBE contractor, 'Gator Boring' has been removed from the City of Tallahassee's list of locally certified MBE firms (as of 2005). This resulted in the Gator's original contract amount of \$329,372.20 being removed from the construction MBE participation amount.*

---

## **E1 - CAPITAL CIRCLE SE – TRAM RD TO CONNIE DR**

### **Project Status:**

Erosion Control and Clearing and Grubbing work is complete from Tram Road to Connie Drive on both sides of Capital Circle with exception the of the west side of CCSE between Barcelona Lane and Old St. Augustine Road. COT Utility relocation permit has been obtained for all Segments and all utility relocation work has been completed on the project. The EMP conditional permit for Segment 2 was granted on October 31, 2005. Segment 2B EMP permit conditions have been satisfied and full permit for Segment 2 is in effect as of April 20, 2006. Curb and gutter and structural asphalt have been placed on CCSE between south of Tram Road and Blair Stone Road. Concrete curb and gutter, basecourse and structural asphalt are complete on northbound lanes between Blair Stone Road and Barcelona Lane. Construction of the west side of Blair Stone Road intersection is scheduled for late June 2007. Design of Segment 3 is complete and the final plans have been released for construction. The EMP permit for Segment 3 was issued on September 8, 2006 conditional upon permitting of SouthWood drainage ponds WD 90N, WD 90S and WD290. SouthWood obtained the required permit on 11/30/06. Excavation of SouthWood ponds near Segment 3 has been started on March 5, 2007 and is in progress. Earthworks and drainage installations on Segment 3 are complete. Concrete curb and gutter, limerock base course and structural asphalt have been placed on Segment 3 northbound lanes. Permit for Segment 4 was obtained on June 8, 2006 and final plans for that Segment have been released for construction September 8, 2006. Work on Pond 11 in Segment 4 is complete. Grading, base course and structural asphalt on Segment 4 northbound lanes are complete. Construction of Old St. Augustine Road east of CCSE is complete to the top of structural asphalt. Traffic has been relocated onto northbound lanes of Segment 4 and grading and drainage work is in progress on southbound lanes between Connie Drive and Old St. Augustine Road.

Work on re-use water line installation is in progress. Placement of COT Water Utility potable waterline and storm drainage system is completed between Tram Road and Blair Stone Road. Curb and gutter and structural asphalt have been completed on Tram Road on both sides of CCSE. No major erosion control, safety, or maintenance of traffic issues to date.

Landscaping work from Tram Road to Blair Stone Road continues. The DRB Meeting was held on May 12, 2007.

## **E1 - CAPITAL CIRCLE SE – TRAM RD TO CONNIE DR**

### **Activities Since Last Period:**

1. Coordinated design adjustments at Monday Street, Connie Drive and various driveways in Segments 3 and 4
2. Continued to coordinate design adjustments of Orange Avenue intersection with COT and Monday Street temporary connection with DB Team
3. Coordinated MOT plans for construction of Blair Stone Road west of CCSE with COT PW and TED
4. The DB Team continued work on landscaping on Segments 1 and 2.
5. Limerock base course and structural asphalt have been placed on the west side of southbound lanes between Merchants Row Boulevard and Barcelona Lane (except Blair Stone Road intersection)
6. Structural asphalt placed on northbound lanes in Segment 3
7. Excavation of SouthWood ponds near Segment 3 continued
8. Grading and drainage installation continued on Segment 4 south bound lanes. Some limerock base course has been placed north of Old St. Augustine Road

### **Planned Activities for Next Period:**

1. Conduct design progress and CEI meetings
2. Complete testing and start installation of street lighting poles
3. Construction of Blair Stone Road west of CCSE. Complete CCSE/Blair Stone Road intersection
4. Complete construction of Orange Avenue intersection with CCSE
5. Continue construction of embankment, drainage installation and base course on the southbound lanes of Segments 3 and 4, north of Barcelona Lane
6. Finalize design of the embankment construction, drainage and MOT at Segment 4 ravine (in place of the MSE wall) and submit the proposal to Blueprint
7. Continue excavation of Segment 3 ponds
8. Continue landscaping work on Segments 2 and 3

### **Significant Issues and Resolutions:**

#### ISSUE

1. Right-of-way and easement issues with COT Electric Utility (north of Monday Street).
2. Permitting - Segment 3.

#### RESOLUTION

Re. pt. 1: Blueprint needs to obtain roadway easement from COT Electric Utility to allow future access and maintenance of CCSE east embankment within COT Electric Utility ROW north of Monday Street.

Re. pt.2: EMP permit conditions for Segment 3 are being coordinated with SouthWood and COT. Interim drainage easement south of Tram Road has been provided by SouthWood to facilitate EMP permit processing independently of the approval of SouthWood SFMP by the City. SouthWood submitted ponds for Segment 3 permit application to Growth Management and the permit for the SouthWood ponds was obtained on 11/30/07. The JPA between CRCDD (SouthWood) and Blueprint and the Supplemental Agreement between Blueprint and the Joint Venture was executed on 2/12/07 and construction of the ponds is in progress.

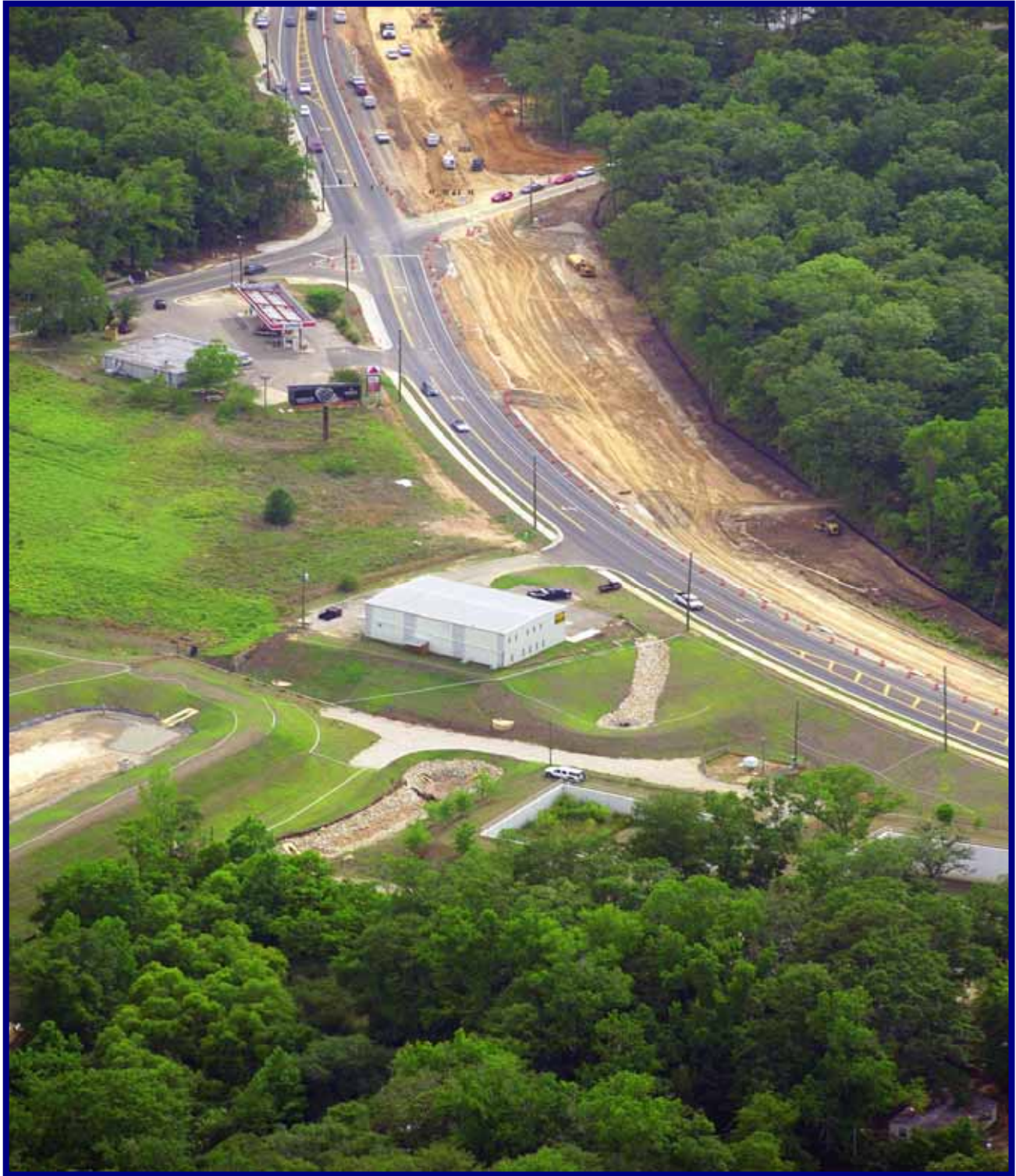
**E1 - CAPITAL CIRCLE SE – TRAM RD TO CONNIE DR**

**CCSE Segment 3 – Drainage Installations**



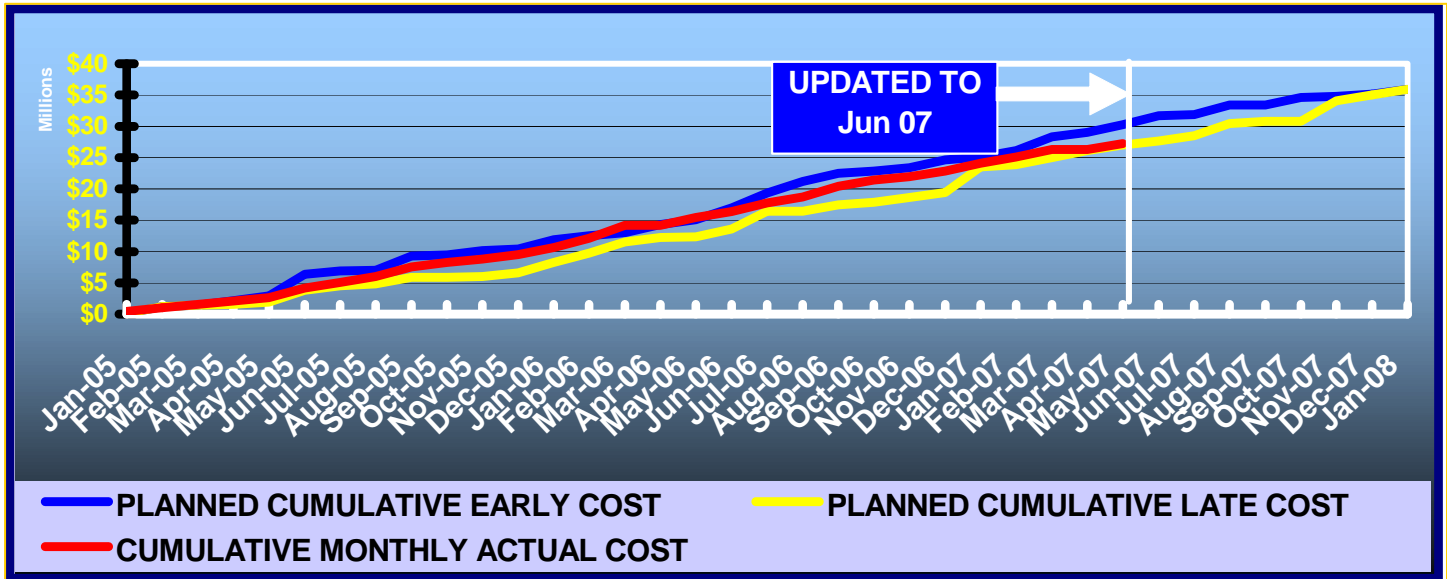
**E1 - CAPITAL CIRCLE SE – TRAM RD TO CONNIE DR**

**CCSE Segment 4 – Grading for Southbound Lanes at Old St. Augustine Road**



**E1 - CAPITAL CIRCLE SE - TRAM RD TO CONNIE DR**

**DB Team Financial Summary of Planned vs. Actual Cost**



**Schedule**

WORK PLANNED	PLANNED START	PLANNED FINISH	2005				2006				2007				2008						
			J	F	M	A	M	J	J	A	S	O	N	D	J	F	M	A	J	J	A
NOTICE TO PROCEED	10-Jan-05		▲																		
SEGMENT II A	31-May-05	10-Mar-06																			
*baseline*	2-May-05	10-Mar-06																			
SEGMENT II B	19-May-06	6-Dec-06																			
*baseline*	3-Mar-06	1-Sep-06																			
SEGMENT IV A	16-Nov-05	12-Jun-06																			
*baseline*	21-Jun-06	11-Jan-07																			
SEGMENT IV B	13-Jun-06	5-Jul-07																			
*baseline*	12-Jan-07	5-Jul-07																			
SEGMENT III A	21-Jun-06	1-May-07																			
*baseline*	21-Jun-06	23-Jan-07																			
SEGMENT III B	19-May-06	6-Dec-06																			
*baseline*	13-Mar-06	1-Sep-06																			
SEGMENT I	1-May-07	21-Sep-07																			
*baseline*	24-Jan-07	5-Jun-07																			
FINAL ACCEPTANCE	24-Jan-08	24-Jan-08																			
*baseline*	1-Oct-07	1-Oct-07																			



**E1 - CAPITAL CIRCLE SE – TRAM RD TO CONNIE DR**

**Right-Of-Way Status Report:**

CLOSED - (IN POSSESSION)	46*
AGREEMENTS SECURED BUT NOT CLOSED	0
DONATION	14
NEGOTIATING/PREPARING FOR SUIT	0
TOTAL PARCELS ON PROJECT	60

\* One parcel was acquired by Order of Taking and still is in suit.

## **C2 - CAPITAL CASCADE TRAIL –SEGMENT 2 DESIGN**

### **Project Description:**

Within the Capital Cascade Trail, Segment 2 is from Lafayette Street to South Monroe Street.

### **Project Personnel:**

<b>Blueprint 2000:</b>	<b>David Bright:</b>	Planning Manager
	<b>Gary Phillips:</b>	Project Manager
<b>Genesis:</b>	<b>Mark Llewellyn:</b>	Project Manager

### **Contract Cost & Schedule Status - Agreement No. 533/Authorization LOA - As of 6/5/2007**

Contract Commencement:	30May06
Contract Completion:	31Oct07
Percent of Work Performed:	48.0%

Original Contract Amount:	\$ 2,399,652.27
Executed Supplemental Agreements:	\$ 0.00
Pending Supplemental Agreements:	\$ 0.00
Current Contract Amount:	\$ 2,399,652.27
Invoiced to Date:	\$ 1,315,904.11
Remaining Contract Amount:	\$ 1,083,748.16
Percent of Contract Amount Complete:	54.8%

Original Contract Time:	519 Days
Contract Time Extensions:	124 Days
Current Contract Time:	643 Days
Contract Time Expended:	371 Days
Contract Time Remaining:	272 Days
Percent Contract Time Expended:	57.7%

### **Schedule Milestones:**

Letter of Authorization	30May06
Submit Design Project Schedule	15Jun06
Workshop #1: Program Formation	27Jul06
Workshop #2: Design Selection	14Sep06
Plan Submittal - 50%	30Jun07
Plan Submittal - 90%	27Sep07
All deliverables completed	03Mar08

**C2 - CAPITAL CASCADE TRAIL – SEGMENT 2 DESIGN**

<b>Consultant Participation:</b>	<b>Contract Amt</b>	<b>% of Contract</b>	<b>ETD</b>	<b>YTD</b>
Archaeological Consultants Inc. <i>Archaeological Services</i>	\$ 33,910.84	1.41	\$ 29,965.42	\$ 29,965.42
Environmental and Geotechnical Specialist <i>Geotechnical</i>	\$ 207,652.55	8.65	\$ 31,288.61	\$ 31,288.61
Akin Associates Architects <i>Architectural</i>	\$ 143,002.37	5.96	\$ 13,793.29	\$ 13,793.29
Moore Bass <i>Land Planning</i>	\$ 36,148.00	1.51	\$ 4,456.16	\$ 4,456.16
Uzzell Advertising <i>Public Relations</i>	\$ 15,562.61	0.65	\$ 14,062.61	\$ 14,062.61
Carr, Lynch, Sandell <i>Park Design</i>	\$ 135,550.00	5.65	\$ 127,164.83	\$ 127,164.83
Jennings Environmental <i>Environmental</i>	\$ 34,800.00	1.45	\$ 11,995.83	\$ 11,995.83
Pinnacle Engineering Group <i>MEP</i>	\$ 72,048.91	3.00	\$ 7,843.74	\$ 7,843.74
CDM <i>Stormwater</i>	\$ 141,230.00	5.89	\$ 90,727.08	\$ 90,727.08
Genesis Group <i>Prime</i>	\$ 1,580,054.00	65.85	\$ 984,606.54	\$ 984,606.54
<hr/>				
Total Contract:	\$ 2,399,959.28	100.00%	\$ 1,315,904.11	\$ 1,315,904.11

MBE Goal:	\$ 371,993.69	15.50%
MBE to Date:	\$ 93,566.09	8.54%

**\*\*Please Note: Carr, Lynch and Sandell's contract amount is not contained in the MBE calculation.**

## **C2 - CAPITAL CASCADE TRAIL – SEGMENT 2 DESIGN**

### **Project Status:**

Letter of Authorization #5 and #6 were executed on March 9 and May 30, 2006, respectively. The two LOAs have been combined under Segment 2 Design and Permitting task for a total cost of \$2,399,652.27

### **Activities Since Last Period:**

1. Continue to coordinate with UAOs on Utility Conflicts and various project alternatives
2. Completed Draft Report for well augmentation and water chemistry
3. Submit Final Park Programming Report
4. Completed right-of-way survey, legals and sketches to support TIITF lease and roadway abandonment
5. Submitted 50% plans to CSX for review and comment
6. Topographic survey review comments provided by Blueprint 2000 to Genesis
7. Responded to FDOT comments on Schematic Submittal and received "acceptance" letter from FDOT
8. Genesis continuing to evaluate by-pass culvert location and size
9. Developing Geophysical Report for Ponds located in Segment 3 and 4
10. Evaluated Suwannee Street Pump house and determined well is functioning properly
11. Patch provided by XP-SWMM to correct problem and model will be recalibrated before hydraulic design continues
12. Met with Althemese Barnes and Commissioner Daily to discuss design, funding for Smokey Hollow and Lake Hall School House
13. Modified the design of Interactive Water Play Area and Restrooms to support larger number of patrons (approximately 300)
14. IA approved separate workshop on CCT in the fall
15. IA passed resolution supporting and recommending approval for TIITF Lease Application with DEP

### **Planned Activities for Next Period:**

1. Continue coordination with project partners
2. Provide hydraulic justification for removing culverts at Beverly and Call Streets
3. FEMA submission scheduled for early June
4. Evaluate Peak Stage in lower pond and effects downstream in Segment 3
5. Submit revised set of plans (50%) and responses to CSX review comments on Schematic submittal
6. CDM has completed the post project model and has begun the floodway analysis
7. Evaluate hydraulically, potential interim improvements in Segment 1
8. Submit 50% Plans at the end of June
9. Supplemental Services request will be submitted, negotiated and approved
10. Review transmission lines clearance at dog park

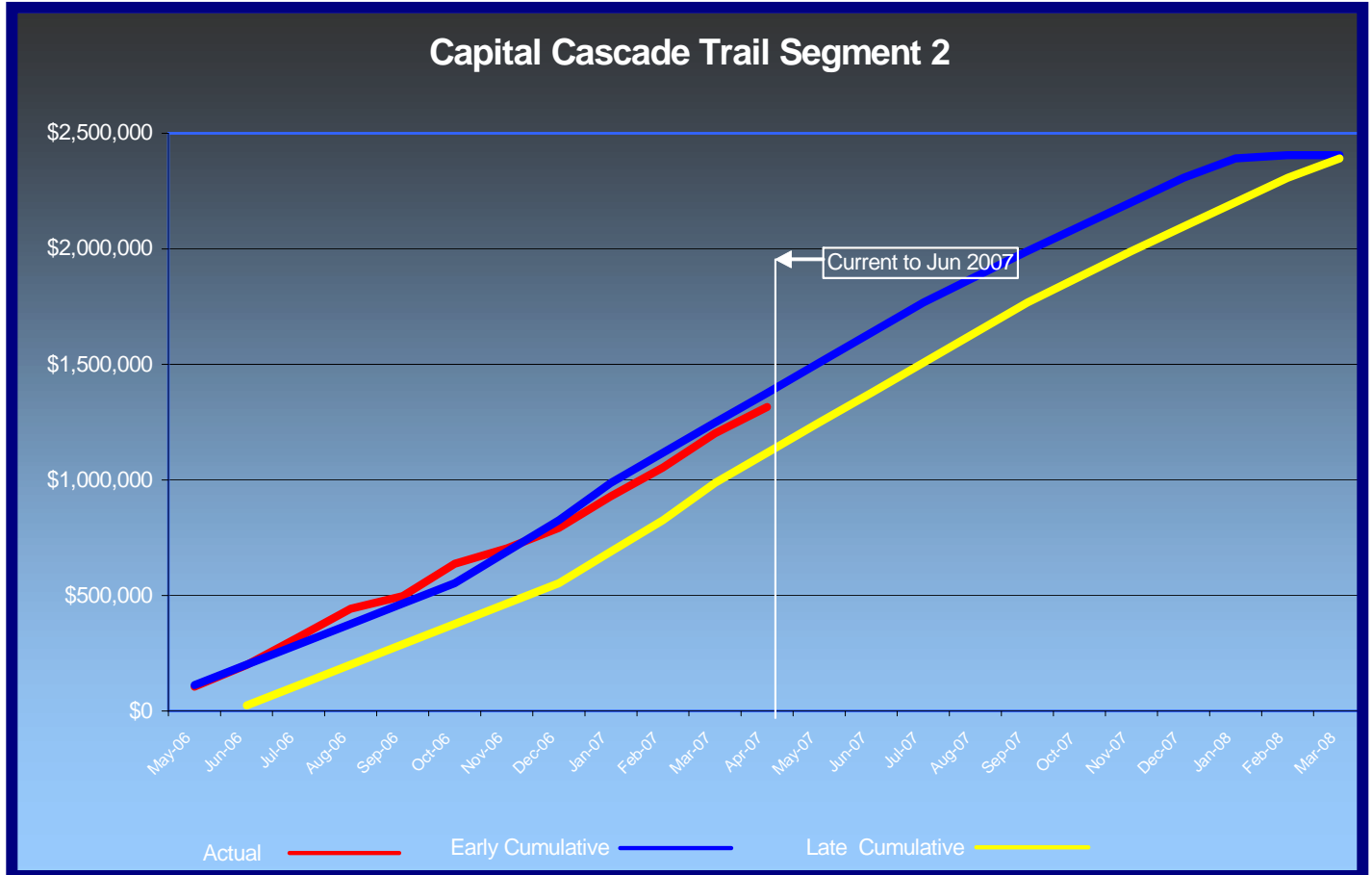
**C2 - CAPITAL CASCADE TRAIL – SEGMENT 2 DESIGN**

**Suwannee Street Pump House**



**C2 - CAPITAL CASCADE TRAIL – SEGMENT 2 DESIGN**

**Financial Summary of Planned vs. Actual Cost**



## C2 - CAPITAL CASCADE TRAIL – SEGMENT 2 DESIGN

### Right-Of-Way Status Report:

Capital Cascade Trail - Segment 2 - Blueprint is waiting on Genesis to provide legal descriptions and sketches to enter into a long-term lease Agreement with DEP for the use of land within the boundary of the Park.



## **MAHAN DRIVE/US 90 – DEMPSEY MAYO ROAD TO I-10 (TIER 2 BLUEPRINT PROJECT)**

### **Project Description:**

This project is the reconstruction of the existing two-lane rural roadway to a four-lane urban roadway with bike lanes and sidewalks. The design is being performed by a consultant under FDOT's direction.

### **Activities Since Last Period:**

1. Survey: Initial work essentially completed and deliverables provided
2. Geotechnical: Completing field work on the additional retaining walls and mast arm foundations
3. Roadway Plans: The median opening was added back at Winery Way as well as modify the median opening at the Tallahassee RV Park to allow access from eastbound traffic
4. Utilities: Utilities have provided verified vertical and horizontal (Vvh) locations and are currently under review
5. Misc. Structure Plans: The design for mast arms will be performed, once the revised signalization sheets from Traffic Engineers have been developed
6. Drainage Design: Incorporated changes at Winery Way and RV Park
7. Updated LRE was submitted 5/16/07
8. Access Management Committee scheduled for June 4 concerning Devoe Moore's property
9. Community Awareness Plan: Responses to comments prepared and submitted to FDOT for approval
10. Signalization Plans: Revising/finalizing the work on the signalization plans
11. Signing and Pavement Marking Plans: Revising/finalizing

### **Planned Activities for Next Period:**

1. Continue surveying punch list including new construction at Thornton Road
2. Geotech to provide Roadway Soils Report in early June
3. Continue to address 60% review comments and proceed with 90% Plans
4. Utility companies to provide their relocation plan next month
5. Submit draft permit package to FDOT for review
6. Submit draft dredge and fill permit to FDOT for review
7. Bridge limits including rip-rap to be confirmed by FDOT

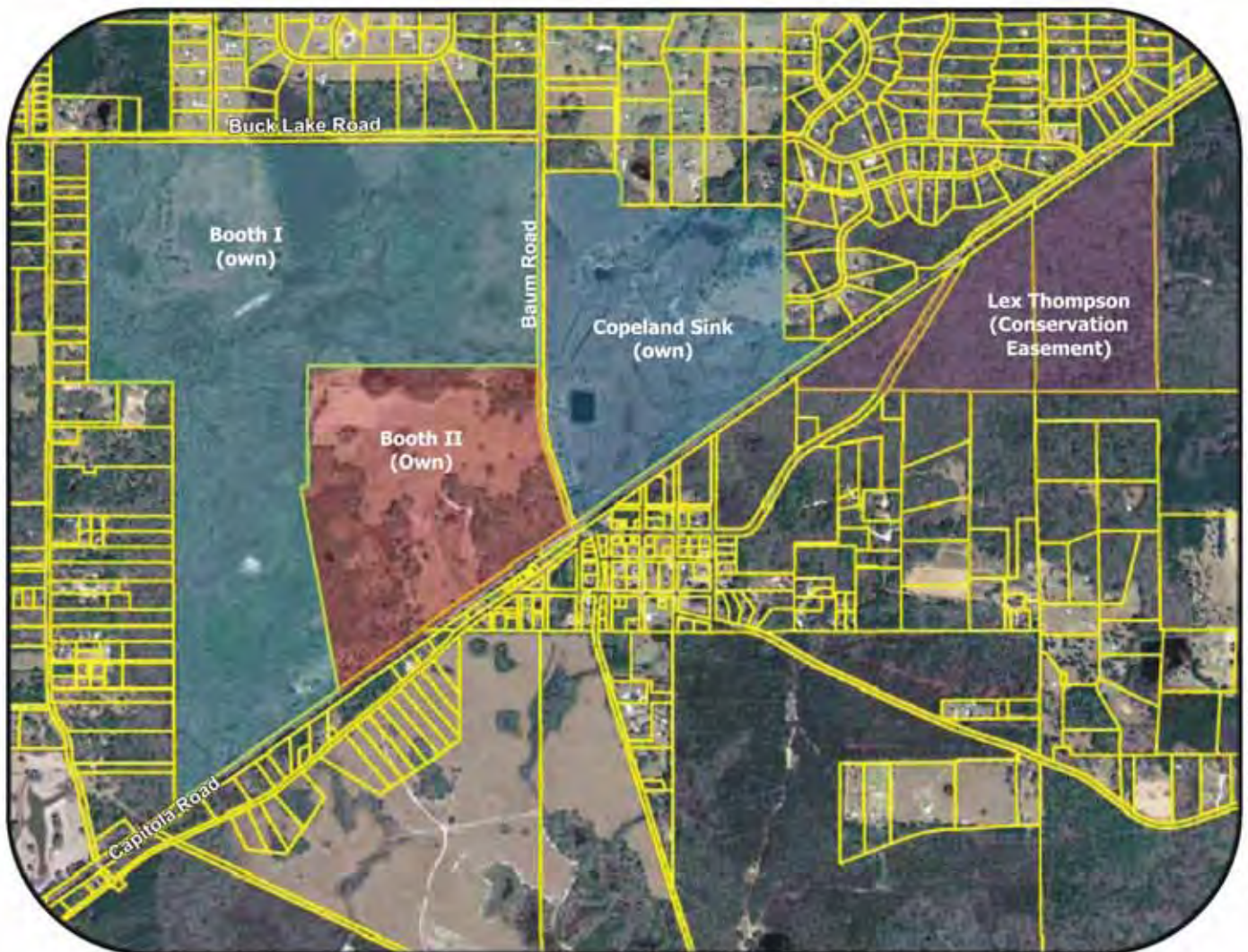


## OTHER

### Sensitive Land Acquisitions

In conjunction with the Florida Communities Trust (FCT), Blueprint closed on the acquisition of a 160 acre tract of land near the Headwaters of the St. Marks. This parcel is identified as "Booth II", and the closing occurred on February 23, 2007.

## Headwaters of the St. Marks River



## **ACRONYMN GLOSSARY**

<b>CAC</b>	Citizens Advisory Committee
<b>CDM</b>	Camp, Dresser & McKee Inc.
<b>CEI</b>	Construction Engineering & Inspection
<b>COT</b>	City of Tallahassee
<b>CR</b>	Community Representative
<b>DEP</b>	Department of Environmental Protection
<b>ETD</b>	Estimated to Date
<b>FCT</b>	Florida Communities Trust
<b>FDOT</b>	Florida Department of Transportation
<b>FHWA</b>	Federal Highway Administration
<b>GEC</b>	General Engineering Consultant
<b>GM</b>	Growth Management
<b>IA</b>	Intergovernmental Agency
<b>LDCA</b>	Location Design Concept Approval
<b>LOA</b>	Letter of Authorization
<b>MBE</b>	Minority Business Enterprise
<b>MOT</b>	Maintenance of Traffic
<b>MSE</b>	Mechanically Stabilized Earthwall
<b>NTP</b>	Notice to Proceed
<b>ROW</b>	Right-of-Way
<b>TCC</b>	Technical Coordinating Committee
<b>USFS</b>	United States Forestry Service
<b>VE</b>	Value Engineering
<b>YTD</b>	Year to Date
<b>CRTPA</b>	Capital Region Transportation Planning Agency
<b>NWFWMD</b>	Northwest Florida Water Management District
<b>FWC</b>	Florida Fish & Wildlife Conservation Commission