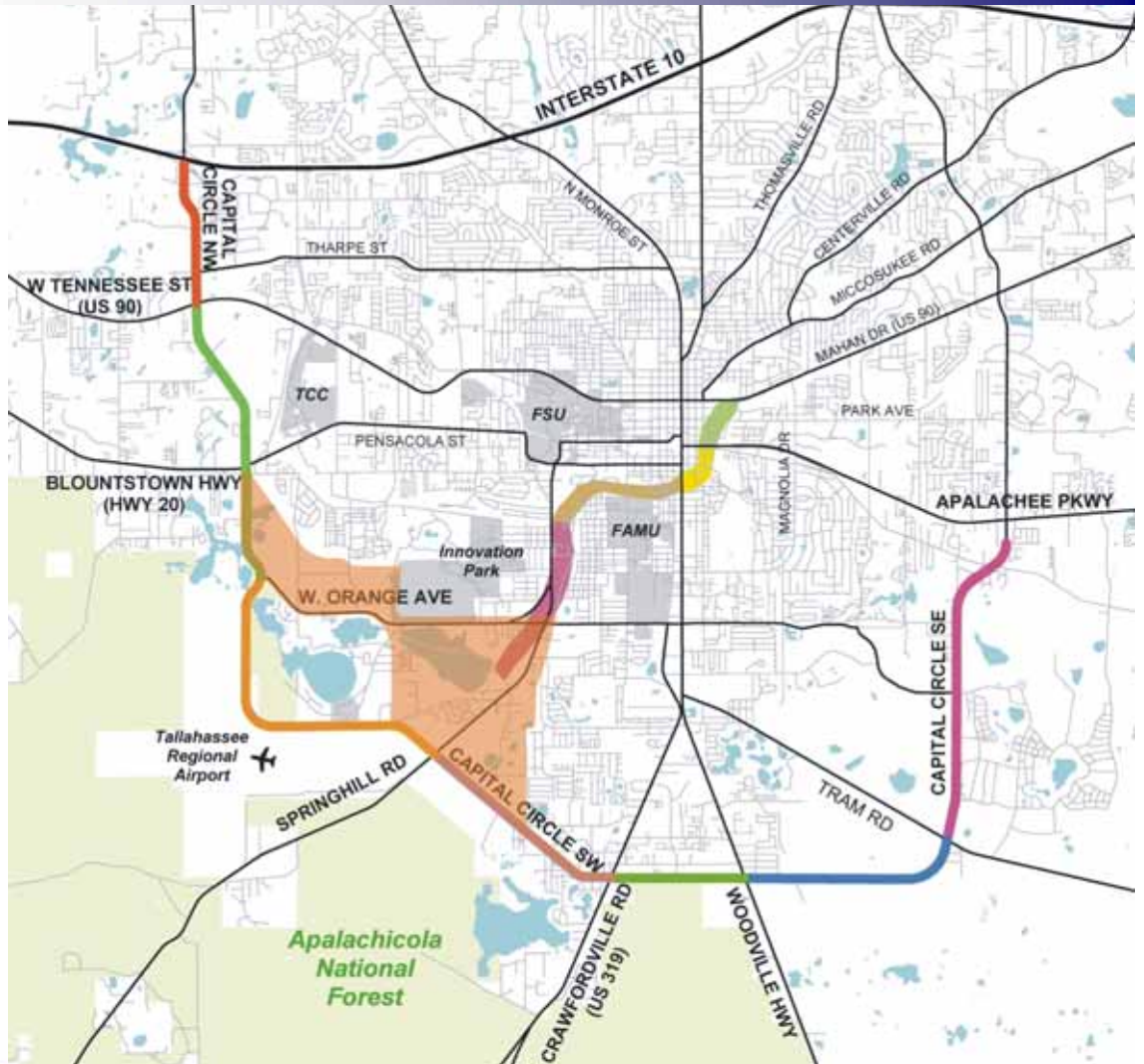


July 2007



BLUEPRINT 2000 & BEYOND

1311 Executive Center Drive, Suite 109
Koger Center, Ellis Building
Tallahassee, Florida 32301

TABLE OF CONTENTS

I. Monthly Progress Reports

	<u>Page</u>
GEC – General Engineering Consultant	1
GEC – Public Involvement	5
N1 - Capital Circle NW – I-10 to US 90	6
N2 - Capital Circle NW/SW – SR 371 (Orange Avenue) to US 90	12
W1 - Capital Circle SW – Crawfordville Road to SR 20	17
E3 - Capital Circle SE – Woodville Highway to Crawfordville Road	21
E2 - Capital Circle SE – Woodville Highway to Tram Road	25
E1 - Capital Circle SE – Tram Road to Connie Drive	29
C2 - Capital Cascade Trail –Segment 2 Design.....	38
Mahan Drive/US 90 – Dempsey Mayo Road to I-10 (Tier 2 Blueprint Project).....	44
Other	455
Acronymn Glossary.....	454

GEC – GENERAL ENGINEERING CONSULTANT

Project Description:

General Engineering Consultant Contract for the Blueprint Intergovernmental Agency. The LPA Group Incorporated is the Prime Consultant with Jacobs Civil, Incorporated as the major subconsultant. Twelve additional subconsultants, seven of which are MBE firms, make up the LPA/Jacobs Blueprint GEC Management Team.

Key Personnel:

Program Manager: Bill Little - Jacobs
 Design Manager: Marek Romanowski - The LPA Group

Contract Cost & Schedule Status – Contract 597

Original Contract Amount:	\$	7,494,493.00
Fiscal Year Re-Authorization:	\$	4,525,519.00
Executed Supplemental Agreements:	\$	0.00
Pending Supplemental Agreements:	\$	0.00
Current Contract Amount:	\$	12,020,012.00
Invoiced to Date:	\$	9,182,151.23
Remaining Contract Amount:	\$	2,837,860.77
Percent of Contract Amount Complete:		76.4%

GEC – GENERAL ENGINEERING CONSULTANT

Subconsultant Participation:	Contract Amt	% of GEC Contract	ETD	YTD
Moore Bass Consulting <i>Stormwater & Landscaping</i>	\$ 170,677.00	1.42	\$ 84,200.43	\$ 15,824.00
Pope Environmental <i>Environmental Services</i>	\$ 211,276.00	1.76	\$ 138,690.00	\$ 13,687.50
OLH International <i>Program Controls</i>	\$ 1,363,231.00	11.34	\$ 1,274,344.30	\$ 155,277.05
Katherine Beck Consulting <i>Government Relations</i>	\$ 45,000.00	0.37	\$ 26,542.44	\$ 5,700.00
Quest Corporation of America <i>Public Involvement</i>	\$ 592,959.00	4.93	\$ 405,999.17	\$ 111,530.67
Uzzell Advertising <i>Public Relations, Web Maint.</i>	\$ 217,405.00	1.81	\$ 270,540.96	\$ 70,714.00
Welch & Ward Architects <i>Architecture, Recreation Facilities</i>	\$ 0.00	0.00	\$ 0.00	\$ 0.00
THC Right-of-Way Services, Inc. <i>R/W appraisal and acquisition</i>	\$ 2,379,149.00	19.79	\$ 1,376,619.52	\$ 584,007.09
Berryman & Henigar <i>Survey and mapping</i>	\$ 326,406.00	2.72	\$ 153,444.85	\$ 25,310.98
Weigal - Veasey <i>Property Appraisal</i>	\$ 0.00	0.00	\$ 0.00	\$ 0.00
Williams Earth Sciences <i>Geotechnical Services</i>	\$ 0.00	0.00	\$ 4,286.78	\$ 0.00
Allen Nobles & Associates <i>Survey</i>	\$ 0.00	0.00	\$ 73,726.00	\$ 0.00
THE LPA GROUP (PRIME) <i>Prime Consultant</i>	\$ 3,444,733.00	28.66	\$ 3,072,227.07	\$ 716,251.14
JACOBS (PRIME SUB) <i>Prime Subconsultant</i>	\$ 3,269,176.00	27.20	\$ 2,301,529.71	\$ 665,468.12
<hr/>				
Total Contract:	\$ 12,020,012.00	100.00%	\$ 9,182,151.23	\$ 2,363,770.55

MBE Goal:	\$ 1,863,101.86	15.50%
MBE to Date:	\$ 2,200,317.30	23.96%

GEC – GENERAL ENGINEERING CONSULTANT

Activities Since Last Period:

1. Attended regular meetings concerning E1-CCSE
2. Continued coordination with COT Growth Management on CCT Segment 2 pond capacity
3. Initiated design linear roadway landscaping for N1-CCNW
4. Attended regular FDOT Leon County Construction Coordination Meeting
5. Continued coordination meetings on CCT-Segment 2 Design
6. Initiated construction and road closure on the west side of Old St. Augustine Road for E1-CCSE
7. Continued coordination with St. Joe and COT on E2-CCSE issues
8. Continued coordination on N2-CCNW/SW Leon County GM, LCSD
9. Received grant funds for Fish/Wildlife for N1-CCNW pond plants
10. Continued alum injection study for CCT Segment 2
11. Continued coordination of landscape project with FDOT on N1-CCNW
12. Finalized JPA with FDOT for E2-CCSE & E3-CCSE
13. Conducted Pre-Submittal Table Top Review of CCT-Segment 2 plans
14. Finalized S.A. with Lochner to complete design of N2-CCNW/SW

Planned Activities for Next Period:

1. Continue coordination with St. Joe on Segment 3 ponds - stockpile locations for E1-CCSE
2. Continue assistance with N1-CCNW
3. Continue design of N1 Pond/Park and landscaping
4. Issue NTP for Design-Build for E2-CCSE
5. Continue coordination for Mahan Drive/US 90 Project
6. Finalize JPA w/ COT and St. Joe Company on E2 ponds
7. Conduct Public Meeting for E3-CCSE
8. Conduct Public Meeting for E2-CCSE

Significant Issues and Resolutions:

ISSUE

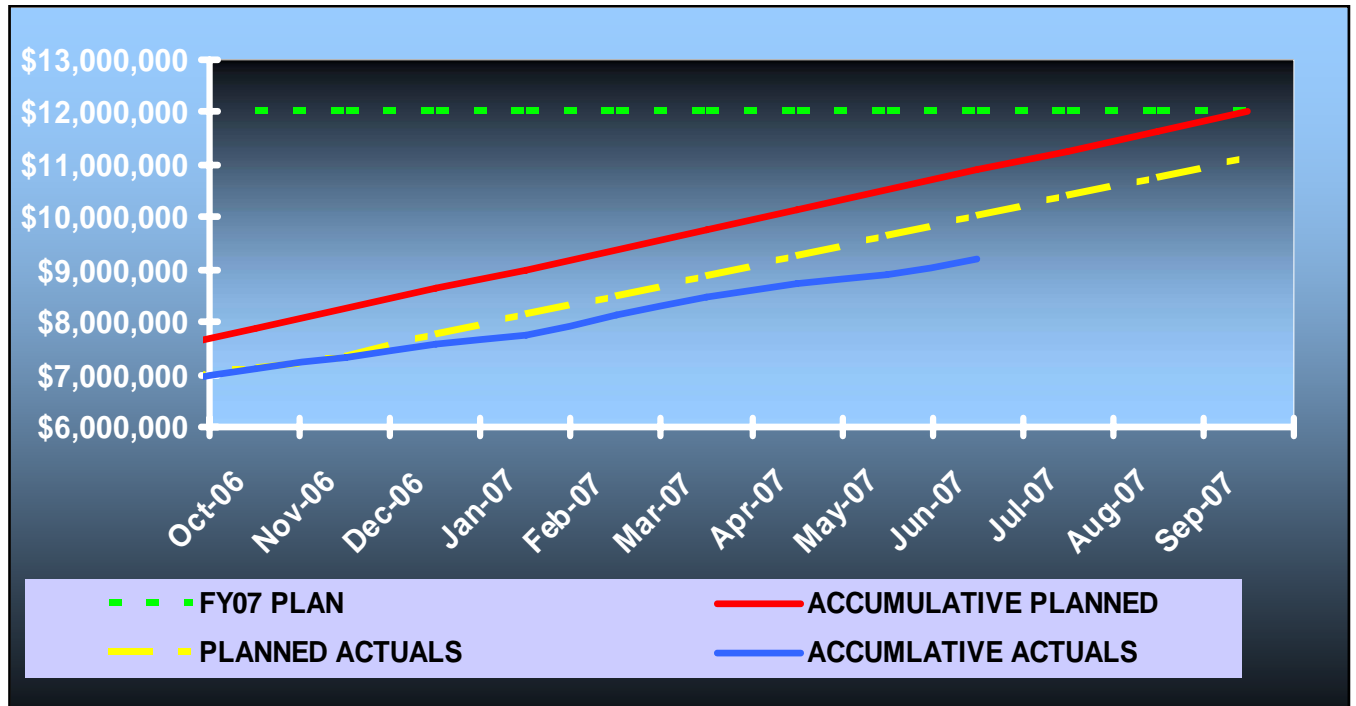
E2-CCSE City/St. Joe JPA needed prior to any permit for clearing.

RESOLUTION

Coordinating with COT and St. Joe to resolve issues.

GEC – GENERAL ENGINEERING CONSULTANT

GEC Contract Financial Summary of Planned Vs. Actual Costs – FISCAL YEAR 2007



GEC – PUBLIC INVOLVEMENT

Activities Since Last Period:

1. Prepared presentation for FSITE Conference
2. Prepared presentation for Downtown District Community Redevelopment Area Downtown Redevelopment Commission
3. Prepared presentation for Greater Frenchtown/Southside Community Redevelopment Area Citizen's Advisory Committee
4. Prepared display ad for E3-CCSE Public Meeting
5. Prepared and distributed press release for E3-CCSE Public Meeting
6. Prepared and distributed notification letter to officials and stakeholders for E3-CCSE Public Meeting
7. Prepare display ad for road closure on Old St. Augustine (west side of CCSE) for E1-CCSE
8. Attended two CEI Meetings for E1-CCSE
9. Attended Utility Kick-Off Meeting for E2-CCSE

Planned Activities for Next Period:

1. Continue to organize Public Meeting for E3-CCSE
2. Continue to organize and hold Public Information Meeting for 60% design for E2-CCSE
3. Prepare press release for Monday Street road closure for E1-CCSE
4. Prepare display ad for Monday Street road closure for E1-CCSE
6. Prepare Cascade Park display boards for Tallahassee Chamber Retreat
7. Organize and attend Community Representative Meeting for W1-CCSW
8. Attend two CEI Meetings for EI-CCSE
9. Organize and hold ribbon cutting ceremony for N1-CCNW
10. Attend TCC Meeting
11. Attend CAC Meeting
12. Organize and attend Community Representative Meeting for W1-CCSW
13. Attend Pre-Construction Conference for E2-CCSE
14. Coordinate and hold meeting for restructuring of web site

N1 - CAPITAL CIRCLE NW – I-10 TO US 90

Project Description:

The proposed 1.991-mile roadway project (FPID: 219722-1) consists of upgrading the existing undivided rural facility to a six-lane divided urban (curb and gutter) facility. Upgrades to the West Tennessee, Tharpe, Hartsfield and Commonwealth intersections will also be included. The purpose of the roadway improvement project is to increase the capacity and safety of the existing highway. The roadway project was designed, let and constructed by the Florida Department of Transportation, with advance funding provided by the Blueprint 2000 Intergovernmental Agency.

CCNW – Final Traffic Pattern Tennessee Street

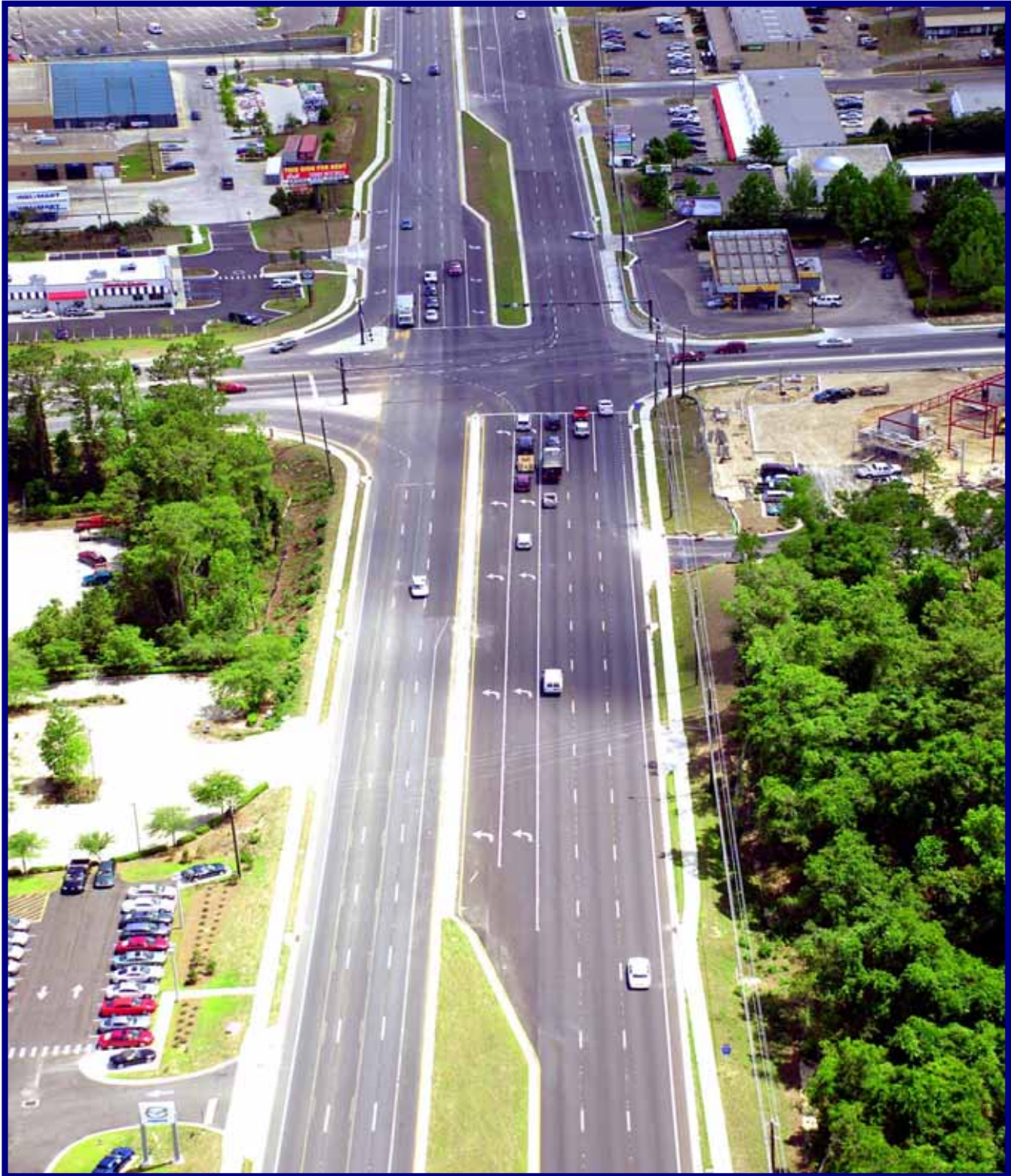


N1 - CAPITAL CIRCLE NW - I-10 TO US 90

MONTHLY PROJECT STATUS REPORT						
Week Ending 07/08/2007						
PROJECT ADMINISTRATION INFORMATION						
FINANCIAL PROJECT NO.:	219722-1-52-01 & 02			RESIDENT ENGINEER:	Steve Martin, P.E.	
CONTRACT NO.:	T3154			PROJECT ADMINISTRATOR:	Jerry McClure	
FEDERAL AID NO.:	N/A			CONTRACTOR:	M of Tallahassee, Inc.	
ORIGINAL CONTRACT AMOUNT (A) Bid:	\$25,462,923.43			CURRENT CONTRACT AMOUNT:	\$25,589,410.64	
COUNTY:	LEON			DESIGN FIRM	FDOT Roadway Design	
DESCRIPTION:	SR 263 (Capital Circle NW) from a Pt S of SR 10 (US90/W Tennessee St) to the SR 8 (I-10) West ramp					
CONTRACT TIME SUMMARY			PROGRESS SUMMARY		CURRENT	PREVIOUS
ORIGINAL DAYS	825		PLANNED		78.81%	75.42%
WEATHER	30		ACTUAL		89.07%	86.41%
GRANTED (S.A.)	0		CONTRACT TIME USED		76.14%	72.87%
GRANTED (F.S.A.)	0		EXPLANATION:			
GRANTED (OTHER)	0					
TOTAL CONTRACT	855					
DAYS USED	651		DATE SUMMARY			
TOTAL REMAINING	204		CONTRACT EXECUTED	8/15/2005		
SUSPENSION DAYS	0		NOTICE TO PROCEED	9/14/2005		
PENDING DAYS	0		CONTRACT START DATE	9/26/2005		
			DATE WORK STARTED	9/26/2005		
NUMBER OF AVAILABLE WORK DAYS THAT CONTRACTOR ELECTED TO PERFORM NO WORK	170		ANTICIPATED FINAL ACCEPT.	12/28/2007		
			CONTRACT TIME EXPIRATION	12/29/2007		
GRANTED DAYS SUMMARY						
STATUS	REASON			NUMBER OF DAYS		
Approved	Weather Days Granted by Weather Letter No. 3			3		
Approved	Weather Days Granted by Weather Letter No. 4			4		
Approved	Weather Days Granted by Weather Letter No. 5			2		
Approved	Weather Days Granted by Weather Letter No. 6			1		
Approved	Weather Days Granted by Weather Letter No. 8			4		
Approved	Weather Days Granted by Weather Letter No. 10			4		
Approved	Weather Days Granted by Weather Letter No. 13			4		
Approved	Weather Days Granted by Weather Letter No. 15			3		
Approved	Weather Days Granted by Weather Letter No. 16			3		
Approved	Weather Days Granted by Weather Letter No. 17			2		
TOTAL NUMBER OF DAYS						30
SUPPLEMENTAL AGREEMENT SUMMARY						
SA #	# DAYS	Sub. Date	Exe. Date	Status	Reason/Description	Amount
999-25-01	0	5/8/2006	5/30/2006	Approved	Additional Erosion Control Measures	\$1,868.45
999-25-02	0	6/5/2006	6/13/2006	Approved	Add'l Pay Items for Removable Work Zone Pavement Markings.	\$43,430.00
999-25-03	0	7/13/2006	7/17/2006	Approved	Temporary Drainage Structures & Pipe	\$33,580.00
999-25-04	0	7/14/2006	7/17/2006	Approved	Relocation of Double-Post Sign	\$2,453.00
999-25-07	0	3/12/2007	3/21/2007	Approved	Removal of Existing Box Culvert	\$22,979.49
006	0	8/1/2006	7/21/2006	Approved	July 2005 Asphalt Specification Change	-\$23,382.06
009	0	9/7/2006	9/25/2006	Approved	Unilateral Pymt. - Add'l MOT	\$19,238.72
008	0	9/14/2006	10/3/2006	Approved	RW2PM's	\$20,921.80
012	0	1/8/2007	1/30/2007	Approved	Additional Water & Sewer Utilities	\$21,005.00
013	0	1/6/2007	1/29/2007	Approved	Base Group 9 - Limerock	-\$132,971.25
016	0	3/6/2007	3/6/2007	Approved	Type 1 Underdrain	\$56,000.00
017	0	3/15/2007	3/13/2007	Approved	Contingency Supplemental Agreement	\$150,000.00
018	0	4/4/2007	3/23/2007	Approved	Add'l Sewer Services - COT - @ Carroll's Boot Country	\$15,675.00
Total Supplemental Agreement Amount-to-Date						\$230,798.15

N1 - CAPITAL CIRCLE NW – I-10 TO US 90

CCNW Final Traffic Pattern Tharpe Street



N1 - CAPITAL CIRCLE NW – I-10 TO US 90

CCNW Final Traffic Pattern Hartsfield Road



N1 - CAPITAL CIRCLE NW – I-10 TO US 90

Project Status:

As of July 8th, 2007: (next Monthly Progress Payment cutoff is 7/22/07)

651 of 855 Total Contract Days have been used (855 Total Days include 30 Weather Days granted to date);

Planned Progress = 78.81%

Actual Progress = 89.07%

Contract Time used = 76.14%

Contract Executed on 8/15/05;

Notice To Proceed on 9/14/05;

Contract Start Date on 9/26/05;

Anticipated Final Acceptance = 12/28/07 (*)

Contract Time expiration = 12/29/07(*)

(*) The Contractor is ahead of schedule and is pursuing an early-finish incentive contract bonus, and is hoping to complete the project by the end of August, 2007.

Original Contract Amount = \$25,462,923.43

Current Contract Amount = \$25,589,410.64

Supplemental Agreement Amount to Date = \$230,798.15

N1 - CAPITAL CIRCLE NW – I-10 TO US 90

Right-Of-Way Status Report:

CLOSED - (IN POSSESSION)	99
AGREEMENTS SECURED BUT NOT CLOSED	20
DONATION	4
NEGOTIATING/PREPARING FOR SUIT	0
TOTAL PARCELS ON PROJECT	125

As of July 2007 FDOT reported:

1. Right-of-Way cost expended so far is approximately \$44,977,288
2. There are 20 parcels remaining to be settled through mediation. The total Right-of-Way cost is estimated to be \$47,831,058.

N2 - CAPITAL CIRCLE NW/SW – SR 371 (ORANGE AVE.) TO US 90

Project Description:

The Expanded Project Development and Environment (PD&E) Study limits for this 2.9 mile project extend from Orange Avenue (SR 371) to Tennessee Street (US 90/SR 10). This project also includes the preparation of approximately 60% design plans, etc.

Project Personnel:

Blueprint 2000:	Project Manager:	Paul Hiers
H.W. Lochner:	Project Manager:	Hugh Williams

Contract Cost & Schedule Status - Agreement No. 772/Authorization 1 - As of 6/1/2007

Contract Commencement:	10May04
Contract Completion:	10May07
Percent of Work Performed:	76.3%
Original Contract Amount:	\$ 1,921,585.90
Executed Supplemental Agreements:	\$ 1,195,430.90
Pending Supplemental Agreements:	\$ 0.00
Current Contract Amount:	\$ 3,117,016.80
Invoiced to Date:	\$ 2,672,911.45
Remaining Contract Amount:	\$ 444,105.35
Percent of Contract Amount Complete:	85.8%
Original Contract Time:	1095 Days
Contract Time Extensions:	160 Days
Current Contract Time:	1255 Days
Contract Time Expended:	1117 Days
Contract Time Remaining:	138 Days
Percent Contract Time Expended:	89.0%

Schedule Milestones:

30% Roadway Plans	28Aug06
Final Environmental Documents	20Jun06
Final Preliminary Engineering Report	20Jun06
60% Roadway Plans	30Apr07
2nd Draft ROW Maps	30Apr07
Final ROW Maps	30Aug07
Location Design Concept Approval (LDCA)	22Aug06
VE Complete	27Oct06

N2 - CAPITAL CIRCLE NW/SW – SR 371 (ORANGE AVE.) TO US 90

Design Subconsultant Participation:	Contract Amt	% of Design Contract	ETD	YTD
Environmental Geotechnical Specialists <i>Geotechnical</i>	\$ 444,860.75	14.27	\$ 335,783.10	\$ 278,851.92
Diversified Design & Drafting Services, Inc. <i>Survey and R/W Mapping</i>	\$ 688,044.64	22.07	\$ 602,088.46	\$ 412,801.37
Archaeological Consultants, Inc. <i>Cultural Resource Assessment</i>	\$ 19,588.27	0.63	\$ 10,947.15	\$ 547.36
HNTB/TEI <i>Traffic Analysis</i>	\$ 90,310.59	2.90	\$ 90,310.59	\$ 11,606.21
American Acquisition Group <i>Right of Way</i>	\$ 97,873.48	3.14	\$ 94,046.22	\$ 8,071.70
HW LOCHNER (PRIME) <i>Prime Consultant</i>	\$ 1,776,339.07	56.99	\$ 1,539,735.93	\$ 876,689.76
<hr/>				
Total Design Contract:	\$ 3,117,016.80	100.00%	\$ 2,672,911.45	\$ 1,588,568.32

Design MBE Goal:	\$ 483,137.60	15.50%
Design MBE to Date:	\$ 948,818.71	35.50%

Project Status:

Conducting Pond and Mitigation analysis and design
 50% Roadway Plans Submitted May 10, 2007
 ROW Acquisition process on-going
 Proceeding toward full 60% plans submittal in October, 2007

N2 - CAPITAL CIRCLE NW/SW – SR 371 (ORANGE AVE.) TO US 90

Activities Since Last Period:

1. Continued to develop full 60% Plans submittal
2. Continued analysis and design of the pond and mitigation sites
3. Continued survey, geotechnical investigation
4. Resubmitted the Natural Features Inventory Report based on review comments
5. Resolve pavement design comments

Planned Activities for Next Period:

1. Respond to plans review comments
2. Continue field work for geotechnical activities
3. Continue to assist with R/W acquisition.
4. Resubmit the pavement design
5. Continue the pond and mitigation design and permit package

Significant Issues and Resolutions:

ISSUE

Regional Pond #1

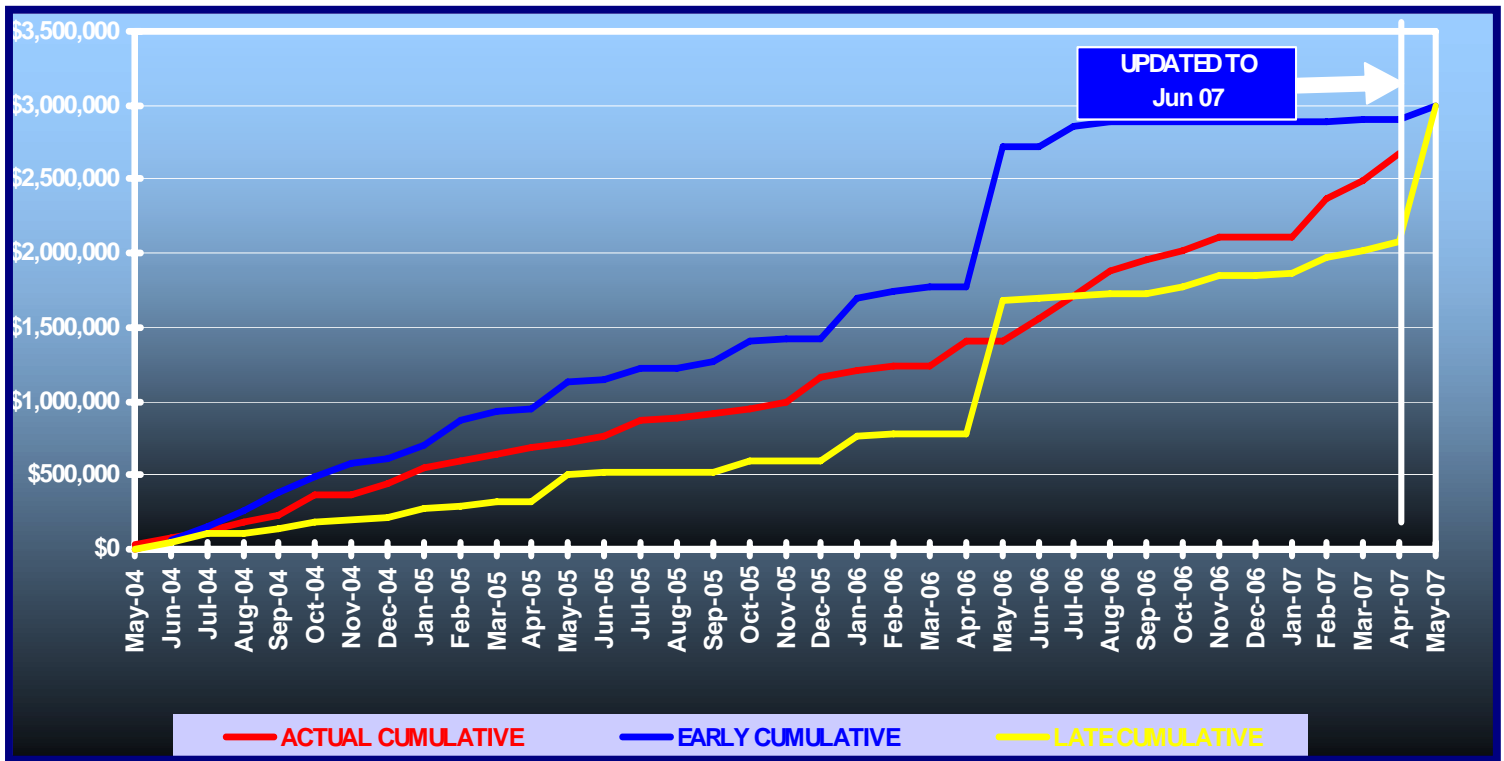
Additional compensating treatment volume will be needed to cover from CSX RR to Shuler Road.

RESOLUTION

Determining the treatment volume needed through coordination with DEP and County Growth Management.

N2 - CAPITAL CIRCLE NW/SW – SR 371 (ORANGE AVE.) TO US 90

Contract Financial Summary of Planned Vs. Actual Costs



N2 - CAPITAL CIRCLE NW/SW – SR 371 (ORANGE AVE.) TO US 90

Right-Of-Way Status Report:

CLOSED - (IN POSSESSION)	0
AGREEMENTS SECURED BUT NOT CLOSED	0
DONATION	0
NEGOTIATING/PREPARING FOR SUIT	138
TOTAL PARCELS ON PROJECT	138

The City of Tallahassee has approved the conveyance of the Broadmoor Estates Parcel to Blueprint. Closing on this parcel should occur within the next thirty (30) days.

Blueprint will start receiving parcel appraisals on this project this month. Once the appraisal review process is completed, offers will be made on the parcels. We anticipate offers being made by September 2007.

W1 - CAPITAL CIRCLE SW – CRAWFORDVILLE ROAD TO SR 20

Project Description:

A Project Development and Environment (PD&E) Study of Capital Circle (SR 263) between Crawfordville Road (SR 61 US 319) and Blountstown Highway (SR 20) a distance of approximately 6.7 miles. The PD&E study is being conducted in accordance with Federal Highway Administration (FHWA), Blueprint 2000 Agency, and Florida Department of Transportation (FDOT) guidelines. The study evaluates alternative alignments as well as the existing alignment. Several viable alternatives are being developed and evaluated in order to address the project needs while taking into account the Blueprint 2000 & Beyond “Project Definitions Report”, prepared by the Economic and Environmental Consensus Committee in 1999, and the Lake Bradford Sector Plan, conducted by the Tallahassee/Leon County Planning Department.

Project Personnel:

Blueprint 2000:	Planning Manager:	Dave Bright
	Project Manager:	Paul Hiers
Kimley-Horn & Assoc.:	Project Manager:	Steve Godfrey/Raymond Ashe

Contract Cost & Schedule Status - Agreement No. 1284/Authorization 1 - As of 6/30/2007

Contract Commencement:	22Aug06
Contract Completion:	22Aug09
Percent of Work Performed:	38.8%

Original Contract Amount:	\$ 2,672,271.68
Executed Supplemental Agreements:	\$ 0.00
Pending Supplemental Agreements:	\$ 0.00
Current Contract Amount:	\$ 2,672,271.68
Invoiced to Date:	\$ 899,715.64
Remaining Contract Amount:	\$ 1,772,556.04
Percent of Contract Amount Complete:	33.7%

Original Contract Time:	1096 Days
Contract Time Extensions:	0 Days
Current Contract Time:	1096 Days
Contract Time Expended:	312 Days
Contract Time Remaining:	784 Days
Percent Contract Time Expended:	28.5%

Schedule Milestones:

Consultant Selected	26May06
Study Begins	22Aug06
Agency Kick-off Meeting	19Oct06
Public Kick-off Meeting	19Oct06
Community Mini-Charrettes	15Jan07
Community Meeting	12Apr07
Corridor/Concepts Charrette	10May07
Alternatives Public Information Meeting	07Apr08
Preferred Alternative Public Meeting	10Dec08
Public Hearing	01Jun09

W1 - CAPITAL CIRCLE SW – CRAWFORDVILLE ROAD TO SR 20

Consultant Participation:	Contract Amt	% of Contract	ETD	YTD
Target Copy and Sign Printers <i>Printing</i>	\$ 30,000.00	1.12	\$ 20,542.18	\$ 20,542.18
Keystone Field Services <i>Relocation</i>	\$ 35,000.00	1.31	\$ 0.00	\$ 0.00
Environmental and Geotechnical Specialists <i>Geotech</i>	\$ 59,830.00	2.24	\$ 13,616.94	\$ 13,616.94
Diversified Design & Drafting Services <i>Survey</i>	\$ 127,874.94	4.79	\$ 0.00	\$ 0.00
StategyWise, LLC <i>Economic Development</i>	\$ 19,500.00	0.73	\$ 0.00	\$ 0.00
Hamilton Smith Assoc. <i>Traffic</i>	\$ 18,600.00	0.70	\$ 18,600.00	\$ 18,600.00
Registe, Sliger Engineering <i>Structures</i>	\$ 123,376.71	4.62	\$ 16,779.23	\$ 16,779.23
KIMLEY-HORN & ASSOC (PRIME) <i>Prime</i>	\$ 1,596,614.64	59.75	\$ 633,555.96	\$ 582,943.28
Dr. Wayson <i>Noise</i>	\$ 30,147.25	1.13	\$ 0.00	\$ 0.00
Hass Center <i>Economic Development</i>	\$ 37,200.00	1.39	\$ 0.00	\$ 0.00
Florida Aquisition & Appraisal <i>Appraisal/Acquisition</i>	\$ 235,804.91	8.82	\$ 52,529.83	\$ 52,529.83
Biological Research Assoc. <i>Water Quality</i>	\$ 105,815.50	3.96	\$ 46,187.92	\$ 46,187.92
Search, Inc <i>Cultural Resource/Archaeological</i>	\$ 53,826.73	2.01	\$ 0.00	\$ 0.00
Camp, Dresser & McKee <i>Drainage & Pond Design</i>	\$ 198,681.00	7.43	\$ 97,903.58	\$ 97,903.58
Total Contract:	\$ 2,672,271.68	100.00%	\$ 899,715.64	\$ 849,102.96

MBE Goal:	\$ 414,202.11	15.50%
MBE to Date:	\$ 69,538.35	7.73%

W1 - CAPITAL CIRCLE SW – CRAWFORDVILLE ROAD TO SR 20

Project Status:

Kimley-Horn and Associates began the Capital Circle Southwest PD&E study in late August, 2006.

The Public and Agency Kickoff Meetings were conducted in October, 2006.

Six Community Forum Meetings were conducted concluding with a Town Hall Meeting held in April, 2007.

The Concept Charrettes were held on May 10th and 12th, 2007

Seven Community Representatives meetings have been held through the month of June 2007.

Activities Since Last Period:

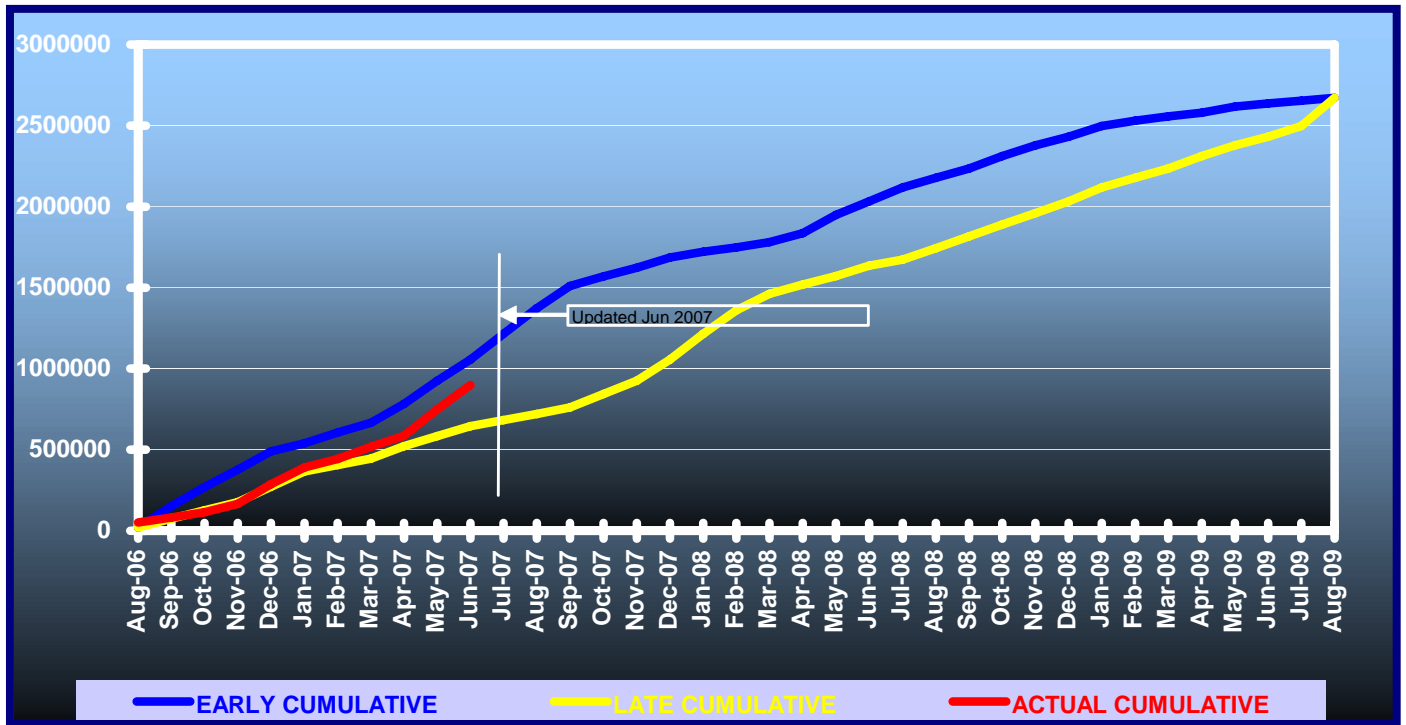
1. Finalized draft evaluation criteria to present to the IA
2. Prepared for and conducted the Concepts Charrette
3. Prepared for and conducted Community Representative Meeting #6
4. Refined corridors from the Concepts Charrette
5. Conducted a coordination meeting with Government Agencies
6. Provided web page updates
7. Attended CAC and TCC Meetings
8. Began analysis of Black Swamp and Grassy Lake, survey and geotechnical, and identification of pond sites

Planned Activities for Next Period:

1. Schedule coordination meeting with FHWA and FDOT D3
2. Prepare for and conduct Community Representative Meeting #7
3. Conduct field review with CR group
4. Begin developing plan for recommended criteria weighting
5. Continue developing the project typical section and design criteria
6. Continue work on water quality report and contamination screening report
7. Continue the identification of preliminary stormwater treatment locations

W1 - CAPITAL CIRCLE SW – CRAWFORDVILLE ROAD TO SR 20

Contract Financial Summary of Planned Vs. Actual Costs



E3 - CAPITAL CIRCLE SE – WOODVILLE HWY TO CRAWFORDVILLE RD

Project Description:

This project proposes to widen approximately 1.53 miles of the existing two-lane Capital Circle SE from Woodville Highway to Crawfordville Road to an ultimate multi-lane urban facility.

FDOT Roadway ID: 55002000 SR 263 from MP 0.200 to MP 1.730.

Project Personnel:

Blueprint 2000:	Design Manager:	Marek Romanowski
	Project Manager:	Gary Phillips
URS Corporation:	Project Manager:	Chris Lovett

Contract Cost & Schedule Status - Agreement No. 1167/Authorization 1 - As of 5/9/2007

Contract Commencement:	02Feb06
Contract Completion:	12Sep07
Percent of Work Performed:	95.0%
Original Contract Amount:	\$ 885,689.21
Executed Supplemental Agreements:	\$ 49,905.00
Pending Supplemental Agreements:	\$ 0.00
Current Contract Amount:	\$ 935,594.21
Invoiced to Date:	\$ 856,617.16
Remaining Contract Amount:	\$ 78,977.05
Percent of Contract Amount Complete:	91.6%
Original Contract Time:	587 Days
Contract Time Extensions:	0 Days
Current Contract Time:	587 Days
Contract Time Expended:	461 Days
Contract Time Remaining:	126 Days
Percent Contract Time Expended:	78.5%

Schedule Milestones:

Selection of Design Consultant	16Aug05
IA authorizes Blueprint to execute Contract with Design Consultant	19Sep05
Contract and LOA#1 are executed	02Feb06
Submit Typical Section Package	06Mar06
Submit Pond Siting Report	05Jun06
Submit ROW Control Survey Maps	03Jul06
Submit Phase I Plans	24Oct06
Submit Pavement Design Package	02Nov06
Submit Phase II Plans	20Mar07
Submit Phase II ROW Maps	20Mar07
Revise and Finalize Phase II Plans	07May07
Submit Phase III (90%) ROW Maps	11Jun07
Submit Phase IV (100%) ROW Maps	09Jul07

E3 - CAPITAL CIRCLE SE – WOODVILLE HWY TO CRAWFORDVILLE RD

Design Subconsultant Participation:	Contract Amt	% of Design Contract	ETD	YTD
EGS				
<i>Geotechnical</i>	\$ 67,411.46	7.21	\$ 59,209.30	\$ 59,209.30
ACI				
<i>Cultural Resource (Archaeological)</i>	\$ 8,153.18	0.87	\$ 0.00	\$ 0.00
Mehta				
<i>Survey</i>	\$ 91,944.24	9.83	\$ 91,944.24	\$ 91,944.24
DRMP				
<i>Survey and Mapping</i>	\$ 204,310.03	21.84	\$ 155,559.10	\$ 155,559.10
URS (Prime)				
<i>Design, Environmental, Signalization, Landscaping</i>	\$ 563,775.30	60.26	\$ 549,904.52	\$ 549,904.52
<hr/>				
Total Design Contract:	\$ 935,594.21	100.00%	\$ 856,617.16	\$ 856,617.16

Design MBE Goal:	\$ 145,017.10	15.50%
Design MBE to Date:	\$ 151,153.54	17.65%

Project Status:

Contract and Letter of Authorization was executed on February 2, 2006
 Part A - 60% design plans - total cost is \$935,594.21

Activities Since Last Period:

1. Reviewed revised project video and provided comments
2. Based on information provided by USFS, Blueprint produced easement schedule which shows FHWA executed easement by December 15th
3. Completed Traffic Conditions Update Report and submitted to IA for review
4. Produced aerial (roll plots) and typical section boards for public meeting schedule for July 16th
5. Completed Project Fact Sheet for Public Meeting
6. Notified property owners and ran advertisement for public meeting in newspaper, as required by Florida Statute
7. Responded to 60% review comments and revised plans accordingly
8. Submit Phase III 9(0%) R/W Maps, legal descriptions and parcel sketches

Planned Activities for Next Period:

1. Submit Phase IV(100%) R/W Maps, legal descriptions and parcel sketches
2. Submit final 60% design plans
3. Complete final invoicing and close-out project

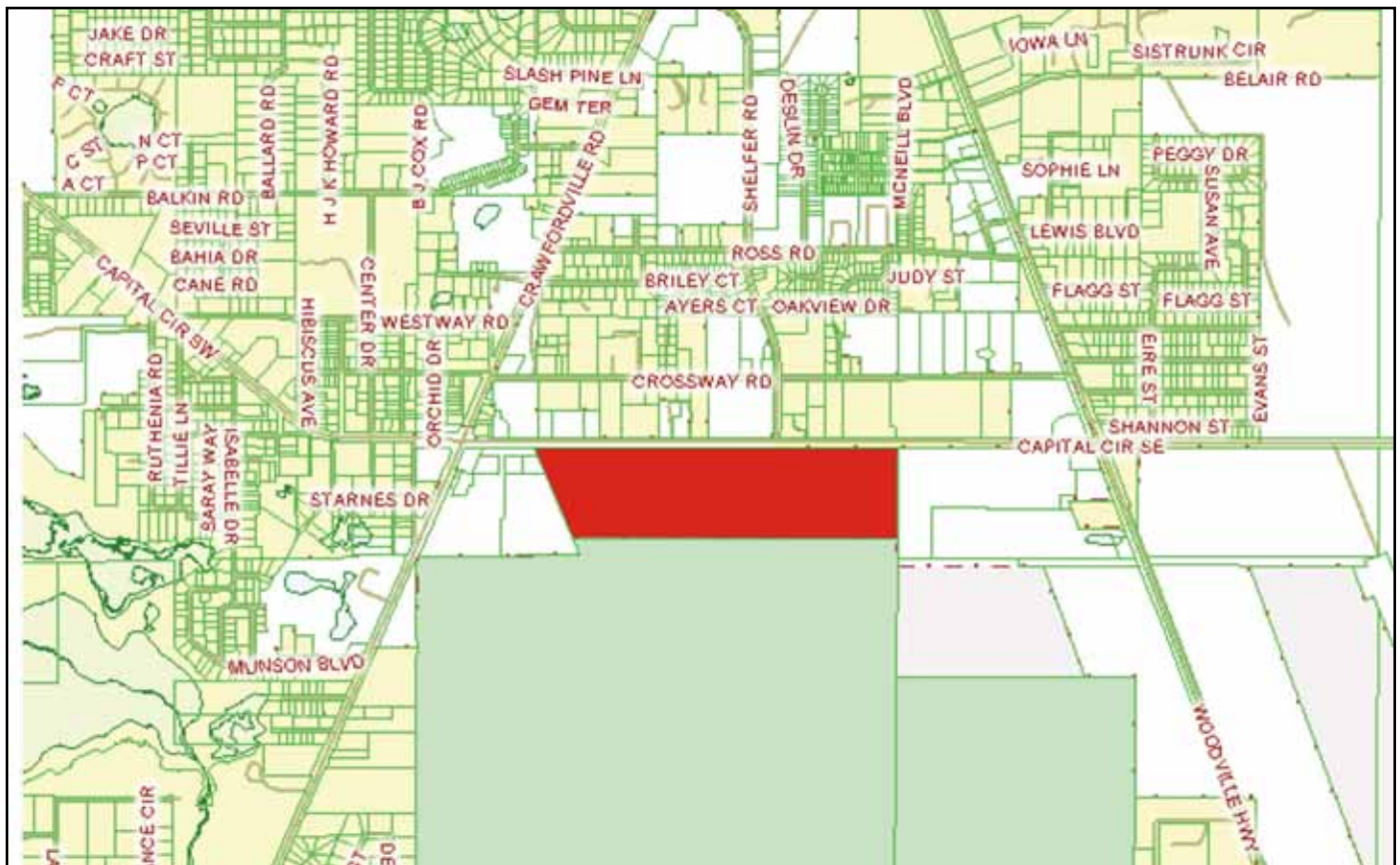
E3 - CAPITAL CIRCLE SE – WOODVILLE HWY TO CRAWFORDVILLE RD

Right-Of-Way Status Report:

Right-of-Way maps are at 90% and are under review. We are in the position to begin acquiring right-of-way as funding becomes available.

FHWA Easement Deed to be completed by December 2007.

USFS Legislation (HR 5725) that would allow the USFS to sell the Tract of land directly to a public or private entity was not acted upon by the 109th Congress. Blueprint was informed that this legislation must be "reintroduced" to the new 110th Congress and that this process was underway.



E2 - CAPITAL CIRCLE SE – WOODVILLE HIGHWAY TO TRAM ROAD

Project Personnel:

Blueprint 2000:	Program Manager	Bill Little, P.E.
	Project Manager:	Marek Romanowski
Sandco Inc./Genesis:	Project Manager:	Bob Myrick
	Design PM:	Dave Snyder

Contract Cost & Schedule Status - Agreement No. 1464

Contract Commencement:	
Contract Completion:	
Percent of Work Performed:	0.0%
Original Contract Amount:	\$ 17,616,609.90
Executed Supplemental Agreements:	\$ 0.00
Pending Supplemental Agreements:	\$ 0.00
Current Contract Amount:	\$ 17,616,609.90
Invoiced to Date:	\$ 0.00
Remaining Contract Amount:	\$ 17,616,609.90
Percent of Contract Amount Complete:	0.0%
Original Contract Time:	900 Days
Contract Time Extensions:	0 Days
Current Contract Time:	0 Days
Contract Time Expended:	0 Days
Contract Time Remaining:	0 Days
Percent Contract Time Expended:	

Project Description:

This project proposes to widen approximately 2.2 miles of the existing two-lane Capital Circle SE from Woodville Highway to Tram Road to an ultimate six-lane facility, mileposts 0.0 to 2.12. In addition, a transitional segment west of Woodville Highway (SR 263 MP 0.0 to approximately MP 0.2).

Schedule Milestones:

Execute Contract	15May07
Partnering Meeting	07Jun07

Project Status:

Contract has been fully executed. Utility Kick-Off meeting was held on 6/27/07. NTP and pre-construction conference is scheduled for July 24, 2007. Public meeting is scheduled for 7/24/07.

E2 - CAPITAL CIRCLE SE – WOODVILLE HIGHWAY TO TRAM ROAD

Activities Since Last Period:

1. Continued coordination of St. Joe / Blueprint / COT JPA for drainage ponds
2. Coordinated pre-construction activities with CEI
3. Held Utility relocation kick-off meeting on June 27, 2007
4. Design Build Team obtained NFI approval from COT Growth Management
5. Coordinated access issues with property owners
6. Blueprint obtained and executed JPA with FDOT
7. Blueprint coordinated landscaping requirements with COT and Design-Build Team

Planned Activities for Next Period:

1. Receive schedule from Sandco/Genesis 10 days after contract execution
2. Perform initial schedule review to establish project baseline
3. Pre-Construction Meeting
4. Negotiate Manhours for CE&I firm and execute Letter of Authorization for CE&I work
5. Establish timetable for regular design reviews
6. Conduct public meeting on 7/24/07
7. Issue NTP and conduct a pre-construction conference

Significant Issues and Resolutions:

ISSUE

The COT Engineering Department requested price proposals for a permanently installed irrigation system along the corridor of CCSE from Woodville Highway to Tram Road.

RESOLUTION

Blueprint 2000 requested, in the City's behalf, a price proposal from Sandco/Genesis. A price proposal has been received. Subsequently Blueprint 2000 has asked for a more detailed price proposal which has been received and is currently under review by COT Engineering Dept. Issue will continue to be monitored and will result in a supplemental agreement for additional work.

E2 - CAPITAL CIRCLE SE – WOODVILLE HIGHWAY TO TRAM ROAD

Right-Of-Way Status Report:

CLOSED - (IN POSSESSION)	5
AGREEMENTS SECURED BUT NOT CLOSED	0
DONATION	6
NEGOTIATING/PREPARING FOR SUIT	14
TOTAL PARCELS ON PROJECT	25

This project has 25 parcels.

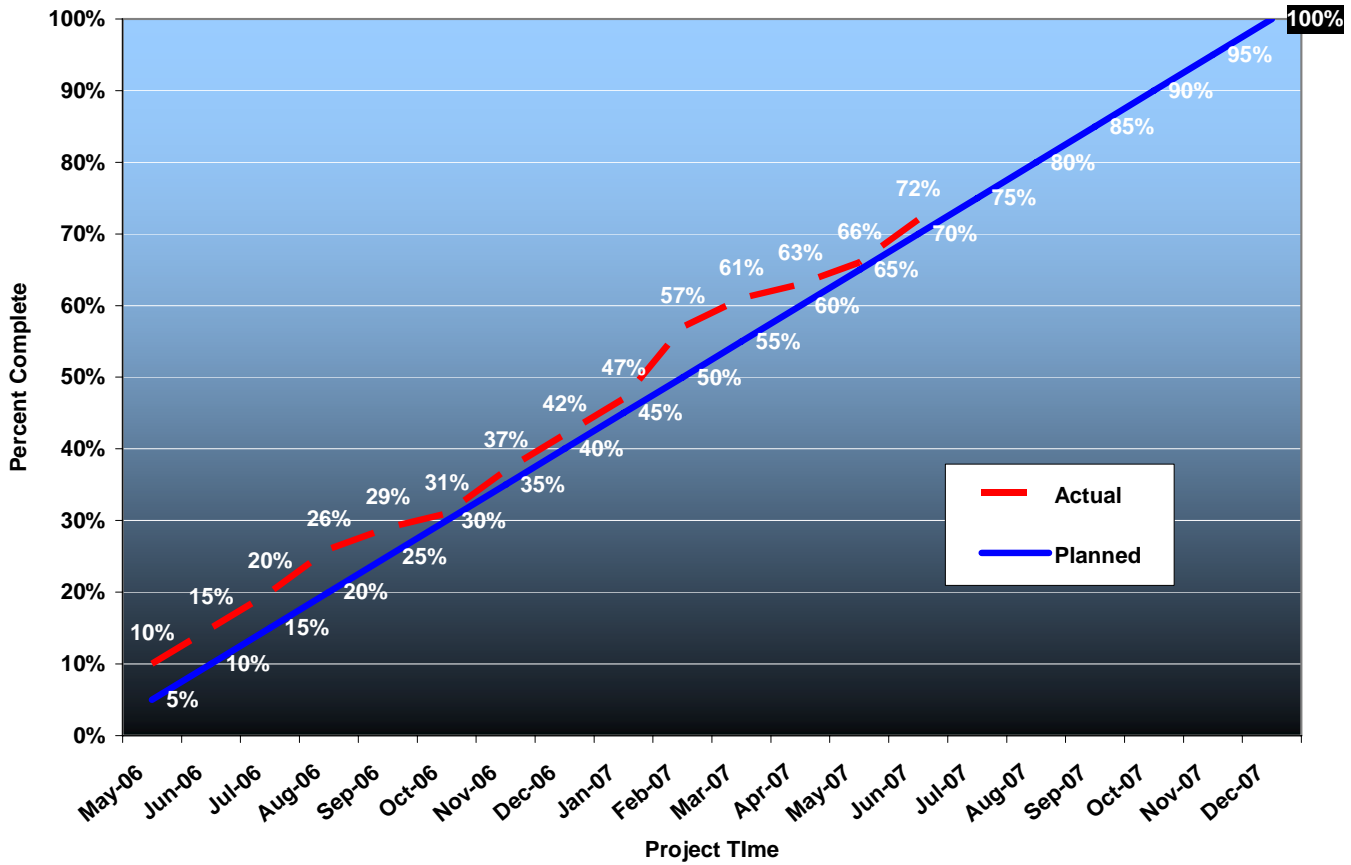
We expect seven right-of-way donations and have received one, the remaining six by the end of July 2007.

We have received 15 parcel appraisals and review appraisals; we have closed six parcels, and have agreements on three additional parcels, closing within the next 60 days. Negotiations are on-going for the remaining parcels.

There are two parcels awaiting completion of appraisals and review appraisals; these should be received in the next 30 days. Offers will be made as soon as possible.

E2 - CAPITAL CIRCLE SE – WOODVILLE HIGHWAY TO TRAM ROAD

**Right-of-Way Aquisition Effort
 Capital Circle Southeast**



E1 - CAPITAL CIRCLE SE – TRAM ROAD TO CONNIE DRIVE

Project Description:

The proposed 3.44-mile project along Capital Circle Southeast (US 319/SR261) extends from south of Tram Road to Connie Drive (milepost 1.931 and 5.371) in Leon County and includes expanding the existing two-lane undivided rural roadway to a six-lane divided urban (curb and gutter) facility. The purpose of the roadway improvement project is to increase the capacity and safety of the existing highway. New traffic signals, including ITS features, will be provided at six intersections: Tram Road, Shumard Oak Boulevard, Merchants Row Boulevard, Blair Stone Road, Orange Avenue and Old St. Augustine Road. The project also includes significant landscaping as well as pedestrian, bicycle and recreational amenities.

Project Personnel:

Blueprint 2000:	Program Manager:	Bill Little
	Project Manager:	Marek Romanowski
	Construction Manager:	Marcus Kelly
PBS&J:	Project Manager:	Steve Martin

Contract Cost & Schedule Status - As of 6/13/2007

Contract Commencement:	10Jan05
Contract Completion:	21Apr08
Percent of Work Performed:	74.4%
Original Contract Amount:	\$ 30,796,339.34
Executed Supplemental Agreements:	\$ 5,818,213.15
Pending Supplemental Agreements:	\$ 181,156.30
Current Contract Amount:	\$ 36,614,552.49
Invoiced to Date:	\$ 27,253,709.33
Remaining Contract Amount:	\$ 9,360,843.16
Percent of Contract Amount Complete:	74.4%
Original Contract Time:	995 Days
Contract Time Extensions:	151 Days
Current Contract Time:	1146 Days
Contract Time Expended:	884 Days
Contract Time Remaining:	262 Days
Percent Contract Time Expended:	77.1%

E1 - CAPITAL CIRCLE SE – TRAM RD TO CONNIE DR

Schedule Milestones:

Intergovernmental Agency (IA) Approval	20Sep04
Execute Contract	22Dec04
Notice to Proceed	10Jan05
Right of Way Acquisition, Phase 1	01May05
Right of Way Acquisition, Phase 2	01Sep06
60% Design Submission - Segment I	28Feb05
90% Design Submission - Segment II	15Apr05
Final Design Submission - Segment II	25Jul05
90% Design Submission - Segment IV	30Aug05
90% Design Submission - Segment III	05Oct05
90% Design Submission - Segment I	14Feb06
Final Design Submission - Segment IV	24May06
Final Design Submission - Segment III	15Aug06
Final Design Submission - Segment I	17May06
Contract Completion	21Apr08

Design Subconsultant Participation:	Contract Amt	% of Design Contract	ETD	YTD
Diversified Design & Drafting Services, Inc.				
<i>Design survey</i>	\$ 111,758.50	0.31	\$ 77,230.00	\$ 0.00
Allen Nobles & Associates, Inc.				
<i>Tree survey for permit application</i>	\$ 18,000.00	0.05	\$ 18,000.00	\$ 18,000.00
Environmental & Geotechnical Specialists, Inc.				
<i>Geotechnical design services</i>	\$ 163,985.26	0.45	\$ 163,985.26	\$ 2,677.26
CMTS Florida, LLC				
<i>Inspection services</i>	\$ 210,000.00	0.57	\$ 122,436.00	\$ 103,704.00
Registe Sliger Engineering, Inc.				
<i>Structural design</i>	\$ 9,898.58	0.03	\$ 8,017.85	\$ 6,137.12
PBS&J (Design Lead)				
<i>Design</i>	\$ 1,503,957.66	4.11	\$ 1,473,844.16	\$ 453,045.70
<hr/>				
Total Design Contract:	\$ 2,017,600.00	5.52%	\$ 1,863,513.27	\$ 583,564.08

Design MBE Goal:	\$ 312,728.00	15.50%
Design MBE to Date:	\$ 371,669.11	19.94%

E1 - CAPITAL CIRCLE SE – TRAM RD TO CONNIE DR

CONSTRUCTION:

Construction Subconsultant Participation:	Contract Amt	% of Const Contract	ETD
Gains & Son Striping	\$ 863,382.92	2.50	\$ 648,361.70
Construction Support Southeast	\$ 1,694,000.00	4.90	\$ 1,131,243.37
All American Ford	\$ 223,761.19	0.65	\$ 223,761.19
Ingram Signalization	\$ 2,371,960.00	6.86	\$ 901,549.74
Greenways of America	\$ 1,400,000.00	4.05	\$ 880,872.24
Hale Contracting	\$ 150,000.00	0.43	\$ 67,557.25
Florida Developer	\$ 175,000.00	0.51	\$ 92,483.80
Terry's Trucking	\$ 1,339,859.08	3.87	\$ 1,339,859.08

Total Construction Contract: \$ 8,217,963.19 23.77% \$ \$5,285,688.37

M. Inc. Contract including COT Water Utility Additional Work

Total Construction Contract:
\$34,579,352.49

Const. Invoiced to Date: \$26,367,992.55
 Const. MBE Invoice to Date: \$5,285,688.37

Construction MBE Goal:	\$ 7,261,664.02	21.00%
Construction MBE to Date:		20.04%

M. Inc. Contract

Total Construction Contract:
\$29,132,815.28

Const. Invoiced to Date: \$21,646,841.88
 Const. MBE Invoice to Date: \$5,285,688.37

Construction MBE Goal:	\$ 6,117,891.21	21.00%
Construction MBE to Date:		24.41%

Please Note: The state-wide certified MBE contractor, 'Gator Boring' has been removed from the City of Tallahassee's list of locally certified MBE firms (as of 2005). This resulted in the Gator's original contract amount of \$329,372.20 being removed from the construction MBE participation amount.

E1 - CAPITAL CIRCLE SE – TRAM RD TO CONNIE DR

Project Status:

Erosion Control and Clearing and Grubbing work is complete from Tram Road to Connie Drive on both sides of Capital Circle with the exception of some 800 feet on the west side of CCSE, north of Old St. Augustine Road. COT Utility relocation permit was obtained for all Segments and all utility relocation work is complete on the project. The EMP conditional permit for Segment 2 was granted on October 31, 2005. Segment 2B EMP permit conditions have been satisfied and full permit for Segment 2 is in effect as of April 20, 2006. Curb and gutter and structural asphalt have been placed on CCSE between south of Tram Road and Blair Stone Road. Concrete curb and gutter, base course and structural asphalt are complete on northbound lanes between Blair Stone Road and Connie Drive. Construction of the west side of Blair Stone Road intersection is in progress. Design of Segment 3 is complete and final plans have been released for construction. The EMP permit for Segment 3 was issued on September 8, 2006 conditional upon permitting of SouthWood drainage ponds WD 90N, WD 90S and WD290. SouthWood obtained the required permit on 11/30/06. Excavation of Southwood ponds near Segment 3 has been started on March 5, 2007 and is in progress. Earthworks, drainage installations, concrete curb and gutter, limerock base course and structural asphalt have been placed on Segment 3 northbound lanes. Traffic was switched over to northbound lanes of Segment 3 on 7/11/07. Grading, drainage installation, curb and gutter, limerock base course and structural asphalt are in progress on southbound lanes. Permit for Segment 4 was obtained on June 8, 2006 and final plans for that Segment were released for construction on September 8, 2006. Work on Pond 11 in Segment 4 is completed. Grading, concrete curb and gutter, base course and structural asphalt on Segment 4 northbound lanes are complete. Traffic was relocated onto northbound lanes of Segment 4 and grading and drainage work is in progress on southbound lanes between Connie Drive and Old St. Augustine Road. Construction of Old St. Augustine Road east of CCSE is complete to the top of structural asphalt. Construction of Old St. Augustine Road west of CCSE has been started on 6/17/07.

Work on re-use water line installation is in progress. Placement of COT Water Utility potable waterline and storm drainage system is complete between Tram Road and Blair Stone Road. Curb and gutter and structural asphalt are complete on Tram Road on both sides of CCSE. No major erosion control, safety, or maintenance of traffic issues to date.

Landscaping work between Tram Road and Blair Stone Road are substantially complete, and landscaping work on the east side of CCSE continues to Connie Drive . The DRB Meeting was held on July10, 2007.

E1 - CAPITAL CIRCLE SE – TRAM RD TO CONNIE DR

Activities Since Last Period:

1. Coordinated design adjustments at Monday Street, Connie Drive and various driveways in Segments 3 and 4 with Design-Build Team
2. Continued to coordinate design adjustments of Orange Avenue intersection with COT and Monday Street temporary connection with Design-Build Team
3. Continued to coordinate MOT plans for construction of Blair Stone Road west of CCSE with COT Public Works and Electric Department
4. The Design-Build Team continued landscaping work on the east side of Segments 3 and 4.
5. Placed curb and gutter, limerock base course and structural asphalt on the west side of southbound lanes between Merchants Row Boulevard and Barcelona Lane (except Blair Stone Road intersection)
6. Completed construction of curbs, base and structural asphalt on northbound lanes in Segment 3 and relocated traffic to northbound lanes
7. Continued excavation of SouthWood ponds near Segment 3
8. Continued grading and drainage installation on Segment 4 southbound lanes north of Old St. Augustine Road
9. Began construction of Old St. Augustine Road west of CCSE

Planned Activities for Next Period:

1. Conduct design progress and CEI meetings
2. Complete testing and start installation of street lighting poles
3. Continue construction of CCSE/Blair Stone Road intersection to top of structural asphalt
4. Complete construction of Orange Avenue intersection with CCSE
5. Continue construction of embankment, drainage installation and base course on the southbound lanes of Segments 3 and 4, north of Barcelona Lane
6. Finalize design of the embankment construction, drainage and MOT at Segment 4 ravine (in place of the MSE wall) and submit the proposal to Blueprint
7. Continue excavation of Segment 3 ponds
8. Continue landscaping work on the west side of CCSE in Segments 3 and 4
9. Complete construction of Old St. Augustine Road west of CCSE

Significant Issues and Resolutions:

ISSUE

1. Right-of-Way and easement issues with COT Electric Utility (north of Monday Street).
2. Permitting - Segment 3.

RESOLUTION

Re. pt. 1: Blueprint needs to obtain roadway easement from COT Electric Utility to allow future access and maintenance of CCSE east embankment within COT Electric Utility ROW north of Monday Street.

Re. pt.2: EMP permit conditions for Segment 3 are being coordinated with SouthWood and COT. Interim drainage easement south of Tram Road has been provided by SouthWood to facilitate EMP permit processing independently of the approval of SouthWood SFMP by the City. SouthWood submitted ponds for Segment 3 permit application to Growth Management and the permit for the SouthWood ponds was obtained on 11/30/07. The JPA between CRCDD (SouthWood) and Blueprint and the Supplemental Agreement between Blueprint and the Joint Venture was executed on 2/12/07 and construction of the ponds is in progress.

E1 - CAPITAL CIRCLE SE – TRAM RD TO CONNIE DR

CCSE Segment 4 – Existing Pavement Removal and Recycling



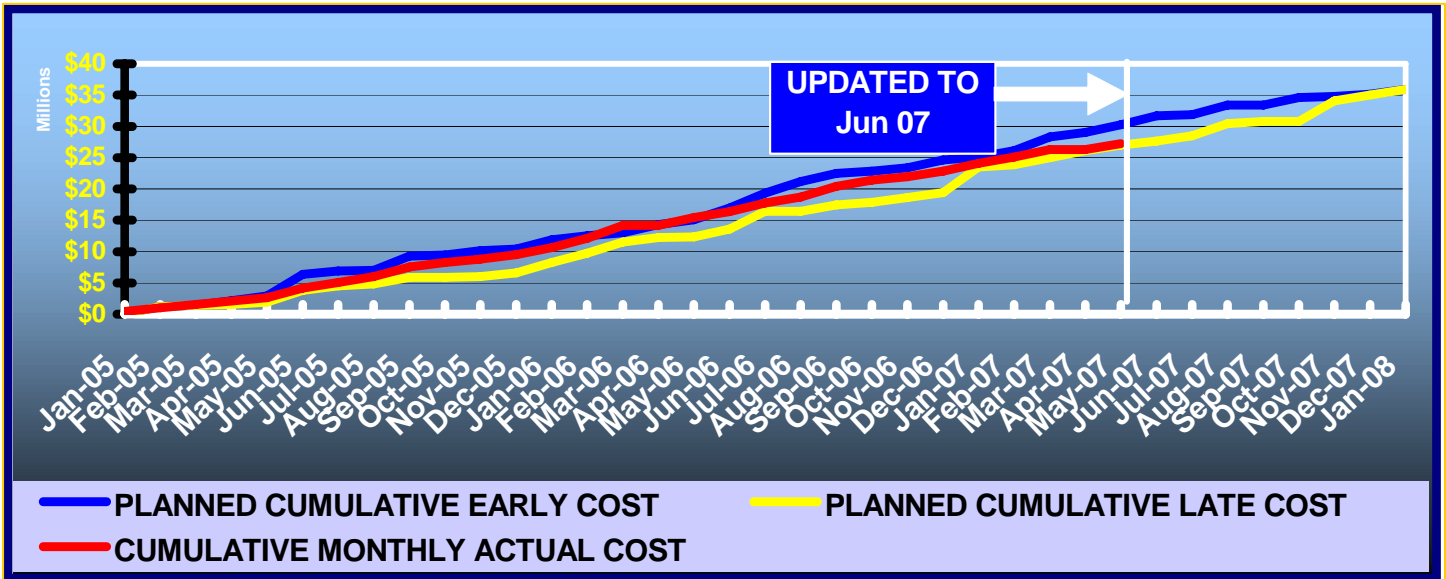
E1 - CAPITAL CIRCLE SE – TRAM RD TO CONNIE DR

**CCSE Segment 3 – Installation of Traffic Signal Controller
at Orange Avenue Intersection**



E1 - CAPITAL CIRCLE SE - TRAM RD TO CONNIE DR

DB Team Financial Summary of Planned vs. Actual Cost



Schedule

WORK PLANNED	PLANNED START	PLANNED FINISH	2005				2006				2007				2008		
			J	F	M	A	M	J	J	A	S	O	N	D	J	F	M
NOTICE TO PROCEED	10-Jan-05		▲														
SEGMENT II A	31-May-05	10-Mar-06															
baseline	2-May-05	10-Mar-06															
SEGMENT II B	19-May-06	6-Dec-06															
baseline	3-Mar-06	1-Sep-06															
SEGMENT IV A	16-Nov-05	12-Jun-06															
baseline	21-Jun-06	11-Jan-07															
SEGMENT IV B	13-Jun-06	5-Jul-07															
baseline	12-Jan-07	5-Jul-07															
SEGMENT III A	21-Jun-06	1-May-07															
baseline	21-Jun-06	23-Jan-07															
SEGMENT III B	19-May-06	6-Dec-06															
baseline	13-Mar-06	1-Sep-06															
SEGMENT I	1-May-07	21-Sep-07															
baseline	24-Jan-07	5-Jun-07															
FINAL ACCEPTANCE	24-Jan-08	24-Jan-08															
baseline	1-Oct-07	1-Oct-07															

E1 - CAPITAL CIRCLE SE – TRAM RD TO CONNIE DR

Right-Of-Way Status Report:

CLOSED - (IN POSSESSION)	46*
AGREEMENTS SECURED BUT NOT CLOSED	0
DONATION	14
NEGOTIATING/PREPARING FOR SUIT	0
TOTAL PARCELS ON PROJECT	60

* One parcel was acquired by Order of Taking and still is in suit.

C2 - CAPITAL CASCADE TRAIL –SEGMENT 2 DESIGN

Project Description:

Within the Capital Cascade Trail, Segment 2 is from Lafayette Street to South Monroe Street.

Project Personnel:

Blueprint 2000:	David Bright:	Planning Manager
	Gary Phillips:	Project Manager
Genesis:	Mark Llewellyn:	Project Manager

Contract Cost & Schedule Status - Agreement No. 533/Authorization LOA - As of 7/9/2007

Contract Commencement:	30May06
Contract Completion:	31Oct07
Percent of Work Performed:	55.0%

Original Contract Amount:	\$	2,399,652.27
Executed Supplemental Agreements:	\$	0.00
Pending Supplemental Agreements:	\$	0.00
Current Contract Amount:	\$	2,399,652.27
Invoiced to Date:	\$	1,469,322.28
Remaining Contract Amount:	\$	930,329.99
Percent of Contract Amount Complete:		61.2%

Original Contract Time:	519 Days
Contract Time Extensions:	124 Days
Current Contract Time:	643 Days
Contract Time Expended:	405 Days
Contract Time Remaining:	238 Days
Percent Contract Time Expended:	63.0%

Schedule Milestones:

Letter of Authorization	30May06
Submit Design Project Schedule	15Jun06
Workshop #1: Program Formation	27Jul06
Workshop #2: Design Selection	14Sep06
Plan Submittal - 50%	30Jun07
Plan Submittal - 90%	27Sep07
All deliverables completed	03Mar08

C2 - CAPITAL CASCADE TRAIL – SEGMENT 2 DESIGN

Consultant Participation:	Contract Amt	% of Contract	ETD	YTD
Archaeological Consultants Inc. <i>Archaeological Services</i>	\$ 33,910.84	1.41	\$ 29,965.42	\$ 29,965.42
Environmental and Geotechnical Specialist <i>Geotechnical</i>	\$ 207,652.55	8.65	\$ 125,906.69	\$ 125,906.69
Akin Associates Architects <i>Architectural</i>	\$ 143,002.37	5.96	\$ 13,793.29	\$ 13,793.29
Moore Bass <i>Land Planning</i>	\$ 36,148.00	1.51	\$ 4,456.16	\$ 4,456.16
Uzzell Advertising <i>Public Relations</i>	\$ 15,562.61	0.65	\$ 14,062.61	\$ 14,062.61
Carr, Lynch, Sandell <i>Park Design</i>	\$ 135,550.00	5.65	\$ 127,164.83	\$ 127,164.83
Jennings Environmental <i>Environmental</i>	\$ 34,800.00	1.45	\$ 11,995.83	\$ 11,995.83
Pinnacle Engineering Group <i>MEP</i>	\$ 72,048.91	3.00	\$ 7,843.74	\$ 7,843.74
CDM <i>Stormwater</i>	\$ 141,230.00	5.89	\$ 94,485.92	\$ 94,485.92
Genesis Group <i>Prime</i>	\$ 1,580,054.00	65.85	\$ 1,039,647.79	\$ 1,039,647.79
<hr/>				
Total Contract:	\$ 2,399,959.28	100.00%	\$ 1,469,322.28	\$ 1,469,322.28

MBE Goal:	\$ 371,993.69	15.50%
MBE to Date:	\$ 188,184.17	16.30%

****Please Note: Carr, Lynch and Sandell's contract amount is not contained in the MBE calculation.**

C2 - CAPITAL CASCADE TRAIL – SEGMENT 2 DESIGN

Project Status:

Letter of Authorization #5 and #6 were executed on March 9 and May 30, 2006, respectively. The two LOAs have been combined under Segment 2 Design and Permitting task for a total cost of \$2,399,652.27

Activities Since Last Period:

1. Continued to coordinate with UAOs on utility conflicts, relocations and potential enhancements via JPA
2. Met with Steve Murray from the Veterans Affairs to discuss park design plans around the Korean War Memorial
3. Determined that there was a fix needed with the XP-SWMM run-off module and that fix was provided
4. Re-Calibrated XP-SWMM after fix was provided
5. Conducted status review meeting to review construction plans and status of submittal (August 3rd is new submittal date based on model problems)
6. First rain sampling event for Alum Feasibility Study occurred June 20, second sampling has not yet occurred
7. Met with Lois Griffin - Executive Director of Tallahassee Symphony to discuss Meridian Plaza and Amphitheater
8. COT Electric Department is going to take lead in completing SUE work for electrical duct bank and gas filled line underneath Gadsden Street
9. Received design review letter form Department of Historical Resources (DHR) and met with reviewers to discuss concerns including historic wall and centennial plaza
10. Received supplemental services request from Genesis on June 20
11. Gas line permit was approved by County at the Franklin/Pensacola intersection and locate was completed on June 23-24
12. Roadway Abandonment Legals and sketches have been completed
13. Parallel bypass has been modeled
14. Grading plan is 99% complete
15. Remediation as-builts have been received from WRS and will be incorporated into park design plans
16. Draft Sequence of Construction plans and roadway design plans will be submitted to Blueprint for review prior to 50% plan review

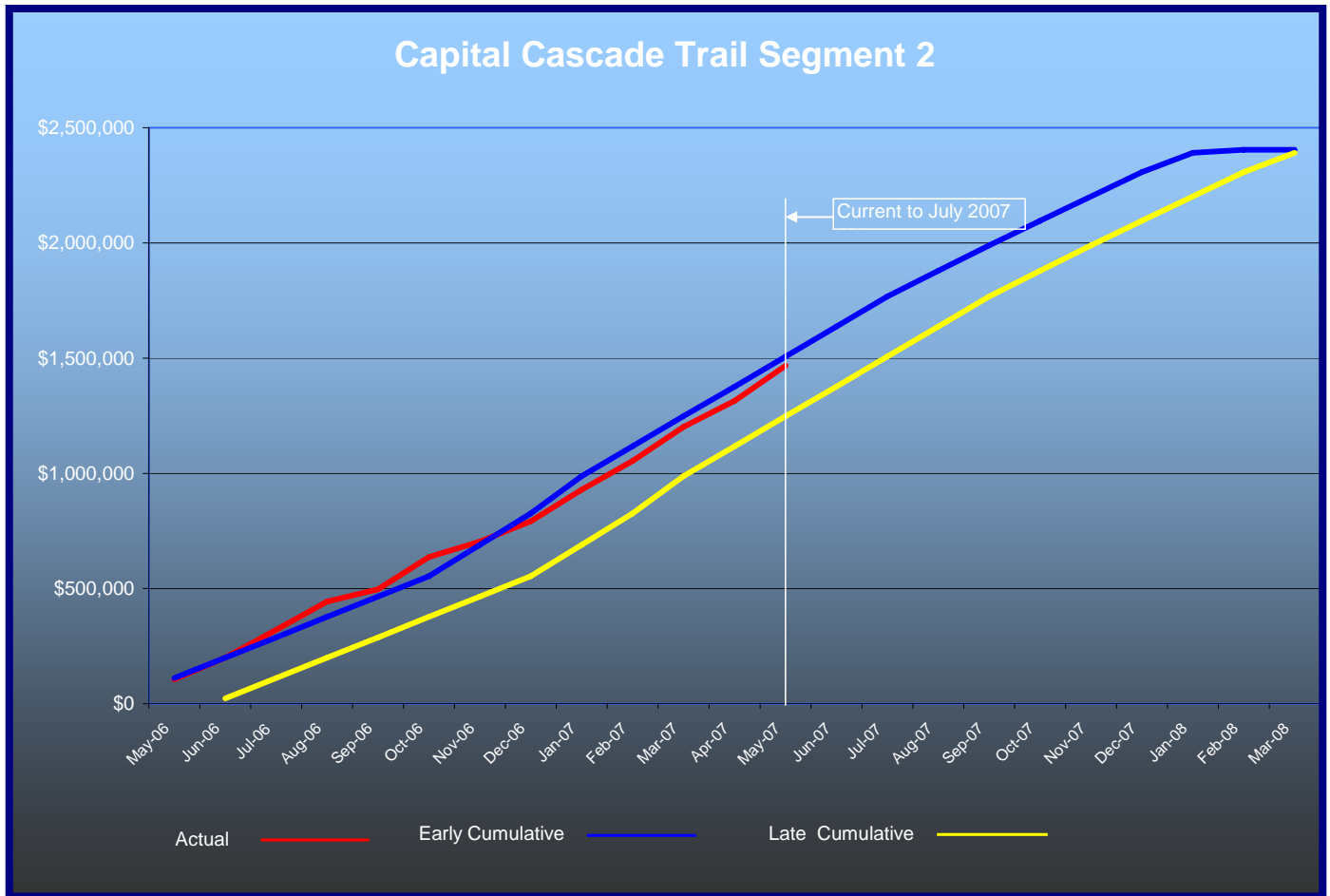
C2 - CAPITAL CASCADE TRAIL – SEGMENT 2 DESIGN

Planned Activities for Next Period:

1. Continue coordination with project partners
2. Provide hydraulic justification for removing culverts at Beverly and Call Streets
3. Evaluate hydraulically, potential interim improvements in Segment 1
4. Evaluate Peak Stage in lower pond and effects downstream in Segment 3
5. Submit 50% plans with results of hydraulic analysis on August 3
6. CDM has completed the post project model and has begun the floodway analysis
7. Supplemental Services request will be submitted, negotiated and approved
8. Coordinate improvements along South Monroe Street with FDOT programmed resurfacing project FPID 421635-1
9. Double by-pass box culvert will be analyzed and final decision made shortly after 50% design submittal
10. Presentation scheduled on July 9 to the Greater Frenchtown/Southside Community Redevelopment Area Citizens Advisory Committee
11. Presentation scheduled on July 10 to Community Redevelopment Board (CRA)
12. Meeting scheduled on July 11 with Jeanie Conner to discuss park design with historic centennial field wall
13. Meeting scheduled on July 17 with COT Parks and Recreation and Ann Bidlingmaier to review Landscape Plan

C2 - CAPITAL CASCADE TRAIL – SEGMENT 2 DESIGN

Financial Summary of Planned vs. Actual Cost



C2 - CAPITAL CASCADE TRAIL – SEGMENT 2 DESIGN

Right-Of-Way Status Report:

Capital Cascade Trail - Segment 2 - Blueprint is waiting on Genesis to provide legal descriptions and sketches to enter into a long-term lease agreement with DEP for the use of land within the boundary of the park.



MAHAN DRIVE/US 90 – DEMPSEY MAYO ROAD TO I-10 (TIER 2 BLUEPRINT PROJECT)

Project Description:

This project is the reconstruction of the existing two-lane rural roadway to a four-lane urban roadway with bike lanes and sidewalks. The design is being performed by a consultant under FDOT's direction.

Activities Since Last Period:

1. Survey: Additional survey of outstanding issues completed and deliverables provided
2. Geotechnical: Completing field work on the additional retaining walls and mast arm foundations
3. Roadway Plans: The scheduled Phase III (99%) plans have been extended to 8/27/07
4. Utilities: Additional funding needed to complete Vvh locations and should be available with new fiscal year
5. Misc. Structure Plans: Retaining walls locations have been identified in cross sections
6. Drainage Design: Addressing 60% review comments
7. Submitted draft Dredge and Fill permit to FDOT for review
8. Lighting Justification Report: The lighting plans to be prepared by COT
10. Signalization Plans: Finalizing work on signalization plans for Phase III (90%) submittal
11. Signing and Pavement Marking Plans: Finalizing work on signing and pavement marking plans for Phase III (90%) submittal
12. Traffic Study: Queue lengths determined for turn lanes

Planned Activities for Next Period:

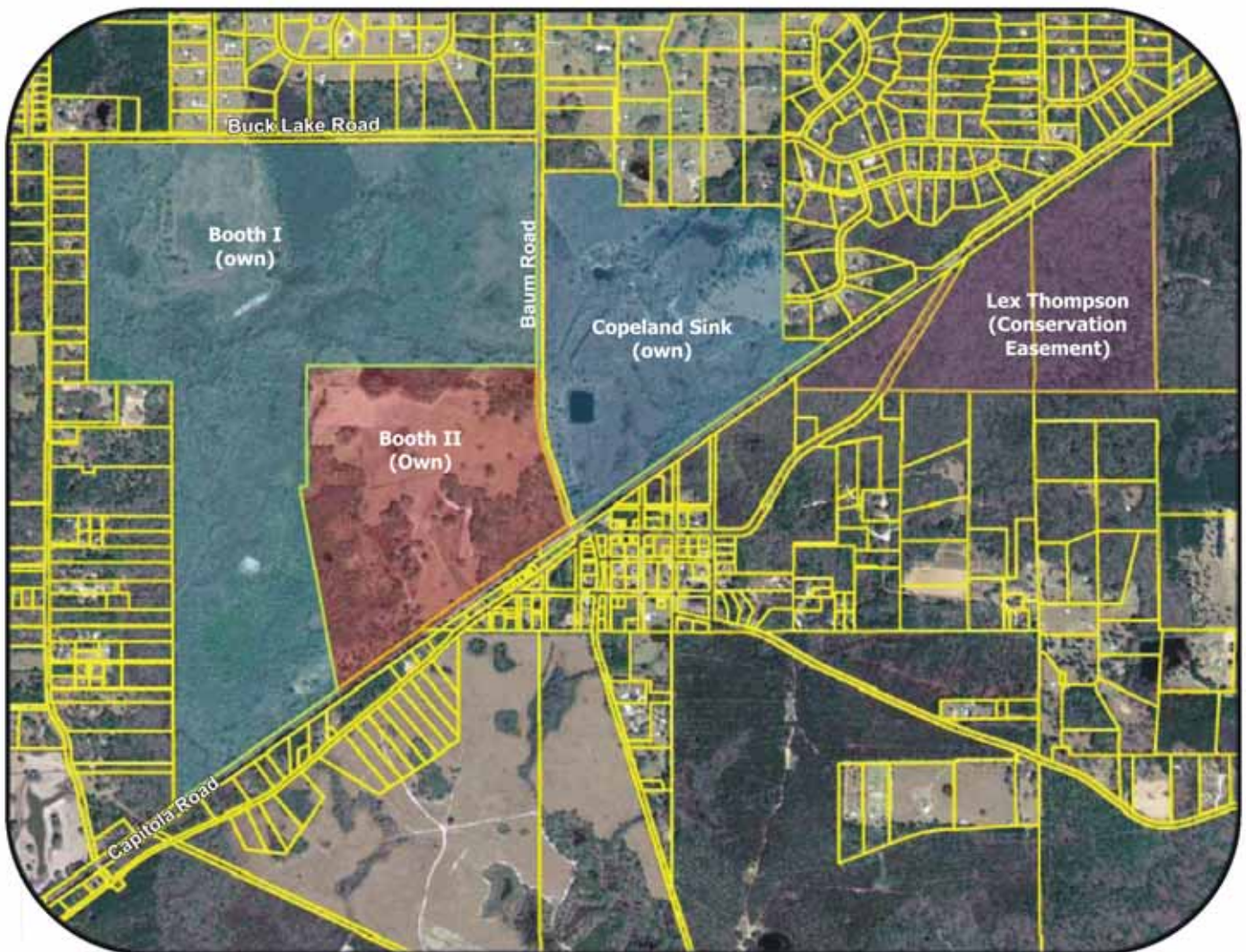
1. Continue surveying punch list including confirming benchmarks of the Stewart Pond
2. Geotech to provide Roadway Soils Report in May
3. Continue to address 60% review comments and proceed with 90% plans.
4. Utility companies to provide relocation plan which will be incorporated into Phase III submittal
5. Submit draft stormwater permit package to FDOT for review (first week in July)
6. Submit FDOT accepted Dredge and Fill permit to FDEP for review
7. Community Awareness Plan: Responses to public meeting submitted to FDOT for approval
8. Prepare responses to comments received at Public Meeting
9. Signalization /Pavement and Marking Plans: Incorporate review comments

OTHER

Sensitive Land Acquisitions

In conjunction with the Florida Communities Trust (FCT), Blueprint closed on the acquisition of a 160 acre tract of land near the Headwaters of the St. Marks. This parcel is identified as "Booth II", and the closing occurred on February 23, 2007.

Headwaters of the St. Marks River



ACRONYM GLOSSARY

CAC	Citizens Advisory Committee
CDM	Camp, Dresser & McKee Inc.
CEI	Construction Engineering & Inspection
COT	City of Tallahassee
CR	Community Representative
DEP	Department of Environmental Protection
ETD	Estimated to Date
FCT	Florida Communities Trust
FDOT	Florida Department of Transportation
FHWA	Federal Highway Administration
GEC	General Engineering Consultant
GM	Growth Management
IA	Intergovernmental Agency
LDCA	Location Design Concept Approval
LOA	Letter of Authorization
MBE	Minority Business Enterprise
MOT	Maintenance of Traffic
MSE	Mechanically Stabilized Earthwall
NTP	Notice to Proceed
ROW	Right-of-Way
TCC	Technical Coordinating Committee
USFS	United States Forestry Service
VE	Value Engineering
YTD	Year to Date
CRTPA	Capital Region Transportation Planning Agency
NWFWMD	Northwest Florida Water Management District
FWC	Florida Fish & Wildlife Conservation Commission