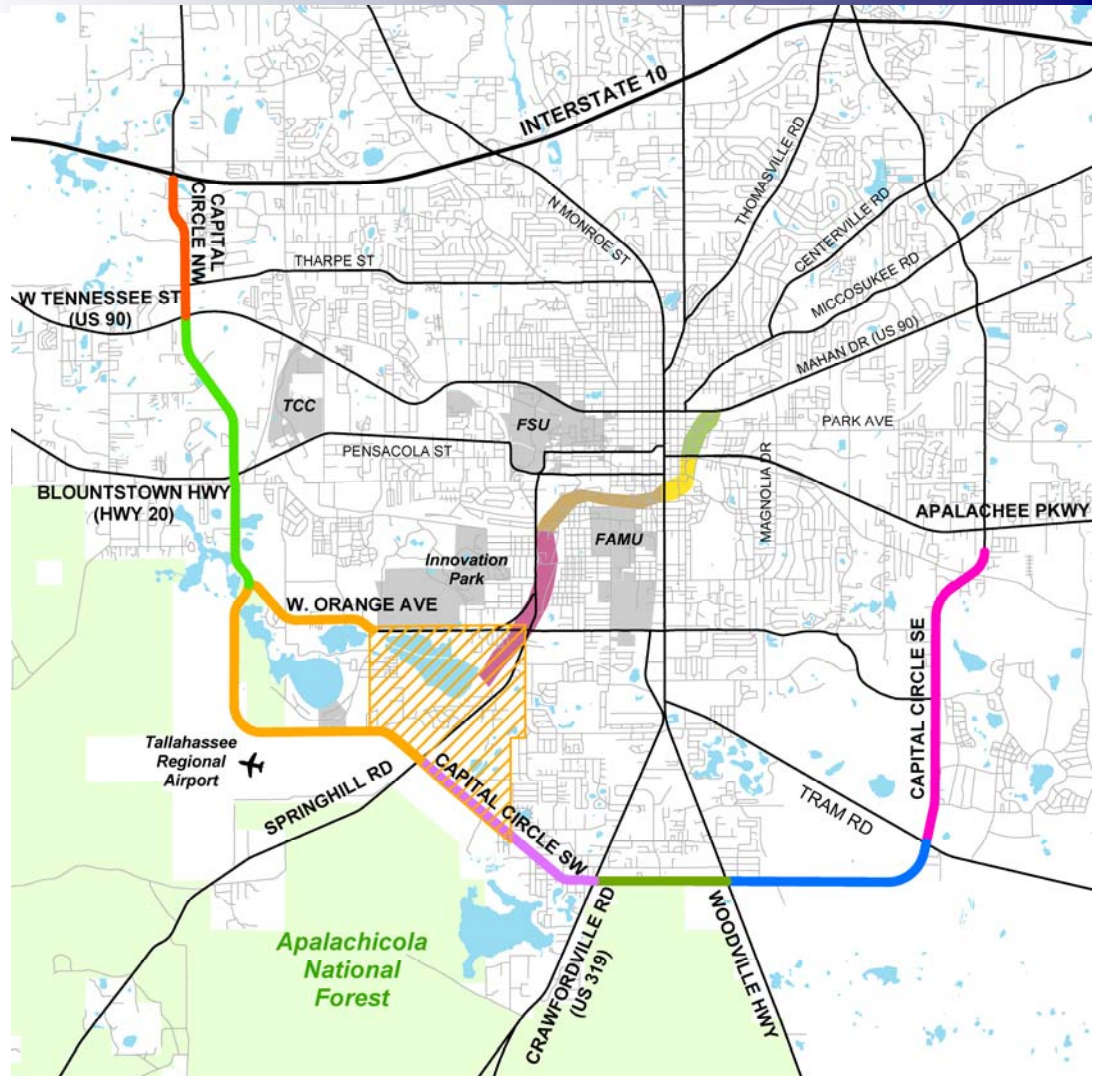


July, 2005



BLUEPRINT 2000 & BEYOND

1311 Executive Center Drive, Suite 109
Koger Center, Ellis Building
Tallahassee, Florida 32301

TABLE OF CONTENTS

I. Monthly Progress Reports

	<u>Page</u>
A. GEC Progress Report	1
B. Public Involvement	3
C. E1 - Capital Circle Southeast (Tram to Connie)	4
D. N2 - Capital Circle Northwest/Southwest (US 90 to SR 20)	9
E. W1 - Capital Circle Southwest (Springhill to SR 20)	12
F. N1 - Capital Circle Northwest (US 90 to I-10)	14
G. E2 – Capital Circle Southeast (Woodville to Tram)	16
H. E3– Capital Circle Southeast (Woodville to Crawfordville)	17
I. C0 - Capital Cascade Trail	19
J. Other – Sensitive Lands Acquisition	24

GEC – GENERAL ENGINEERING CONSULTANT

Key Personnel:

Program Manager: Jerry Oshesky – The LPA Group
 Engineering Manager: Bill Little – Jacobs

Contract Cost & Schedule Status – Contract 597 (as of 6/30/05)

Original Contract Amount:	\$2,341,236.00
Fiscal Year Re-Authorization	\$1,874,777.87
Executed Supplemental Agreements:	\$ 0.00
Pending Supplemental Agreements:	\$ 0.00
Current Contract Amount:	\$4,216,008.87
Invoiced to Date:	\$3,060,569.89
Remaining Contract Amount:	\$1,155,438.98
Percent of Contract Amount Complete:	72.6%

MBE/DBE Participation:	Contract Amt	% of GEC Contract	ETD
Moore Bass Consulting <i>Stormwater & Landscaping</i>	\$ 75,667	1.79	\$ 33,407
Pope Environmental <i>Environmental Services</i>	\$115,342	2.74	\$ 54,588
OLH International <i>Program Controls</i>	\$557,461	13.22	\$498,815
Katherine Beck Consulting <i>Government Relations</i>	\$ 25,000	0.59	\$ 1,075
Quest Corporation of America <i>Public Involvement</i>	\$121,958	2.89	\$ 99,013
Uzzell Advertising <i>Public Relations, Web Maint.</i>	\$ 82,405	1.95	\$ 64,161
Welch & Ward Architects <i>Architecture, Recreation Facilities</i>	\$ 8,000	0.18	\$ 0
Totals	\$985,845	23.4%	\$751,060
	MBE Participation to date	24.5%	

Activities Since Last Period:

1. Coordination Efforts with E1-CCSE Project
2. Met with FDOT D3 Sec. Prescott
3. Participated in shortlist selection for E3-CCSE Project
4. Created white paper for GMI Bill Approach for funding
5. Developed DB approach and schedule for E2
6. Met with FHWA for Blueprint Update
7. Participated and provided briefing to CAC
8. Attended TLH Airport Master Plan Public Meeting

GEC – GENERAL ENGINEERING CONSULTANT

Planned Activities for Next Period:

1. Coordination with COT GM for Segment 2 Permit Approval
2. Assist with coordination of E2-CCSE contract
3. Continued Coordination with N1-CCNW Contract (letting)
4. Continued active coordination with FDOT
5. Strategies for Blueprint acquisition of Growth Management Funding
6. Preparation for September IA Meeting

Significant Issues and Resolutions:

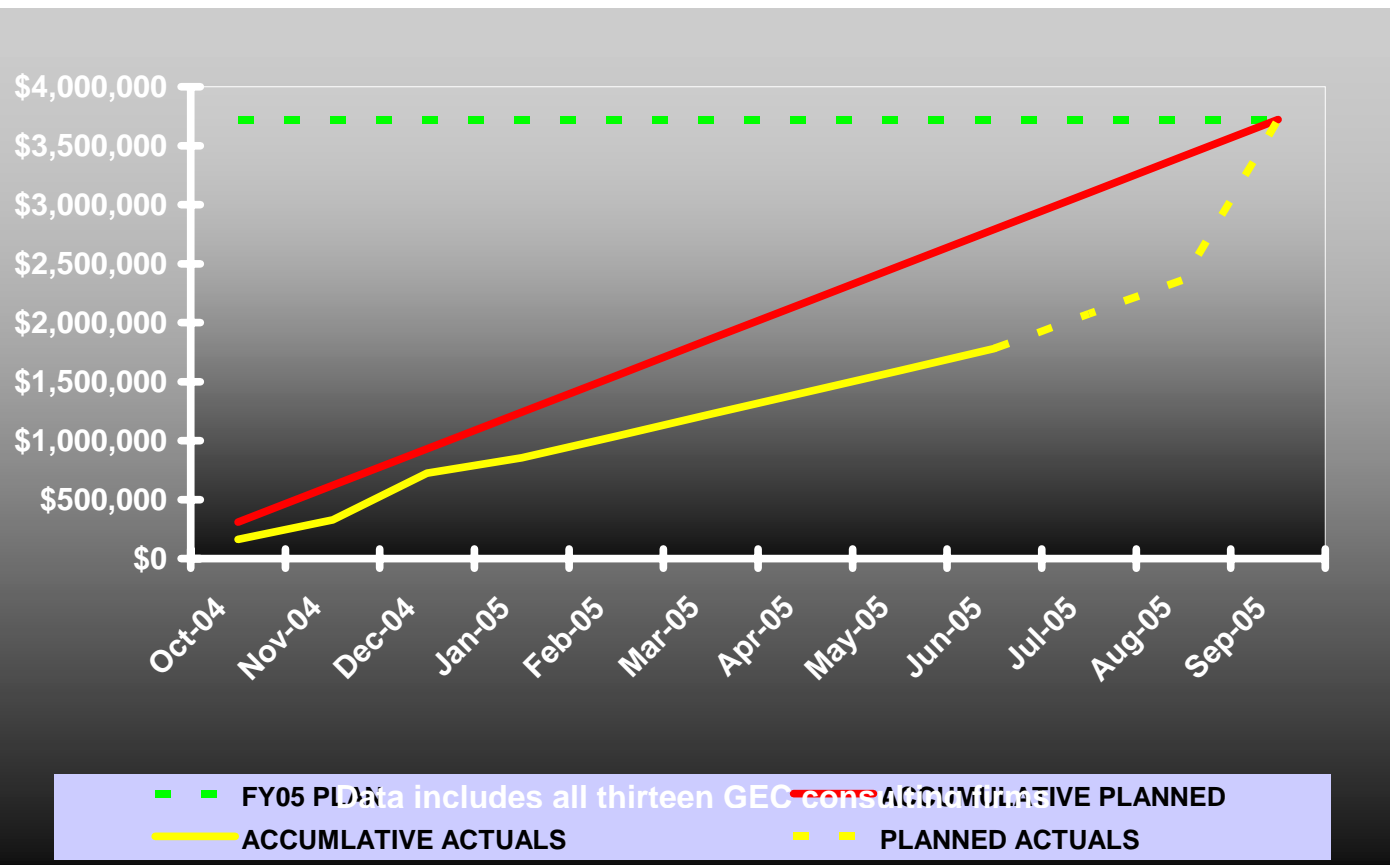
ISSUE:

E1-CCSE Stormwater Facilities Master Plan

RESOLUTION:

Continued monitoring with COT Growth and Environmental Office

GEC Contract Financial Summary of Planned Vs. Actual Costs – FISCAL YEAR 2005



GEC – PUBLIC INVOLVEMENT

Activities Since Last Period:

- ❖ Assisted in development of Funding Strategy for Growth Management Initiative document
- ❖ Assisted WCOT in development of W1-CCSW Highlight for “Tallahassee Matters”
- ❖ Conducted N2-CCNW/SW Project Advisory Group meeting (6/23)
- ❖ Support for W1-CCSW Section 18, Flea Market Tract “Roundtable discussion with Forestry and City/County stakeholders (6/28)
- ❖ Conducted N2-CCNW/SW Alternatives Public Workshop (6/30)
- ❖ Research and addition of Aenon Church Rd. residents for notification of W1-CCSW Alt. 11
- ❖ Roll out of E1-CCSE construction web pages
- ❖ Development of E3-CCSE database
- ❖ Attended TLH Airport Master Plan Public Meeting (7/12)
- ❖ Scheduled E1-CCSE 2nd Partnering Session (8/15)
- ❖ Assisted in development of E2-CCSE Strategy to obtain TRIP funding by utilizing DB delivery
- ❖ Scheduled program overview for FDOT Midway office for projects on state roads.

Planned Activities for Next Period:

- ❖ Develop presentation and CCSW display booth for Annual Chamber Community Conference (7/22)
- ❖ Electronic compilation of all public input and correspondence for W1-CCSW
- ❖ Presentation to FHWA for overview of all Blueprint programs/projects (8/2)
- ❖ Development and Coordination for E1-CCSE 2nd Partnering Session (8/15)
- ❖ Notification and Coordination for W1-CCSW Public Meeting No. 4 (8/16)
- ❖ Development of web pages for N2-CCNW/SW
- ❖ Development of staff Bio's for website

Significant Issues and Resolutions:

ISSUE:

None at this time

RESOLUTION:

E1 – CAPITAL CIRCLE SOUTHEAST – Tram Rd. to Connie Dr.

Project Description:

The proposed 3.44-mile project along Capital Circle Southeast (US 319/SR261) extends from south of Tram Road to Connie Drive (milepost 1.931 and 5.371) in Leon County and includes expanding the existing two-lane undivided rural roadway to a six-lane divided urban (curb and gutter) facility. The purpose of the roadway improvement project is to increase the capacity and safety of the existing highway. New traffic signals, including ITS features, will be provided at six intersections: Tram Road, Shumard Oak Boulevard, Merchants Row Drive, Blair Stone Road, Orange Avenue and Old St. Augustine Road. The project also includes significant landscaping as well as pedestrian, bicycle and recreational amenities.

Project Personnel:

Blueprint 2000 Engineering Manager:	Bill Little
Blueprint 2000 Project Manager:	Marek Romanowski
Blueprint 2000 Construction Manager:	Garrett Martin
PBS&J Project Manager:	David Freni

Contract Cost & Schedule Status:

Contract Commencement:	01/10/05 (NTP)
Contract Completion:	01/08/08 (1095 days)
Percent of Work Performed:	8.5%
Original Contract Amount:	\$30,796,339.34
Executed Supplemental Agreements:	\$5,259,275.25
Pending Supplemental Agreements:	\$10,780.00
Current Contract Amount:	\$36,045,614.59
Invoiced to Date:	\$3,079,151.03
Remaining Contract Amount:	\$32,966,463.56
Percent of Contract Complete:	12.8%
Original Contract Time:	995 Days after NTP

Schedule Milestones:

Intergovernmental Agency (IA) Approval	09/20/04
Execute Contract:	12/22/04
Notice to Proceed:	01/10/05
Right of Way Acquisition, Phase 1	05/01/05
Right of Way Acquisition, Phase 2	09/01/06
60% Design Submission – Segment I	02/28/05
90% Design Submission – Segment II	04/15/05
90% Design Submission– Segment III	05/12/05
90% Design Submission– Segment IV	08/08/05
Final Design Submission – Segment II	05/09/05
Final Design Submission– Segment I, III	06/24/05
Final Design Submission– Segment IV	09/20/05
Contract Completion	01/08/08

Project Status:

Erosion Control and Clearing and Grubbing work is complete from Tram Road to Merchants Row Boulevard. COT Water/Sewer Utility Joint Project Agreement with Blueprint 2000 was executed on 6/08/05. Utility Relocation permit has been issued on 6/10/05 by COT Streets and Drainage Department. Work on COT Water Utility 30" Sanitary Bypass (WP 1) continues.

E1 – CAPITAL CIRCLE SOUTHEAST – Tram Rd. to Connie Dr.

Activities Since Last Period:

1. DB Team submitted 100% construction, MOT and drainage plans for Seg. 2 on 6/22/05 to Blueprint 2000 for review and release for construction.
2. Blueprint 2000 reviewed and provided comments on the 100% construction, MOT and drainage plans for Seg. 2. The comments were discussed with and incorporated in the project by the DB Team. Submission of the Final Component Plans for Seg. 2 to Blueprint is scheduled for July 18, 2005.
3. DB Team submitted updated June 2005 project schedule package to Blueprint for review and approval. The schedule is being reviewed by Blueprint.
4. DB Team and Blueprint reviewed access alternatives to Pond 11 in Seg. 4. Blueprint will coordinate the recommended access with FDOT and the City.
5. Blueprint coordinated requirements and schedule for design and construction of west extensions of Shumard Oak Boulevard and Merchants Row Boulevard with Southwood.

Planned Activities for Next Period:

1. Conduct design progress meeting and CEI meeting.
2. The DB Team will continue to work toward the 90% plans for Seg. 1, 3 and 4.
3. Provide updated roadway plans and schedules to utility companies for Seg. 1, 3 and 4.
4. Continue construction of 30" sanitary sewer bypass at Riggins Road and utility relocation in Seg. 2.
5. Process additional work change orders (median break at Midyette Road, and two additional conflict structures at 30" sanitary force main bypass).
6. Blueprint will coordinate chilled water lines requirements with DMS.

Construction Update:

1. Pond Excavation for Pond 3 & 4 completed, waiting for sodding and drainage structures to be placed.
2. DRB Briefing conducted 7/18.
3. Growth & Environmental Permit is controlling item of work at this time.
4. 2nd Partnering Meeting scheduled for 8/15.
5. Construction Trailer set-up proceeding

Significant issues and resolutions

1. Right-of-way and easement issues with COT Electric Utility.
2. Canopy Road: intersection of CCSE / Old St. Augustine Road; Linear Infrastructure Variance.
3. Joint Project Agreement with St. Joe Company (resolved).
4. Acquisition of Growth & Environmental Permit to place drainage structures on Segment 2.

E1 – CAPITAL CIRCLE SOUTHEAST – Tram to Connie

Right-Of-Way Status Report (Connie to Centerview)

As of July 15, 2005

TOTAL PARCELS ON PROJECT	34
SECURED THROUGH O/T	12
DONATION (ST. JOE)	1
SECURED THROUGH NEGOTIATED SETTLEMENT (Pre-Suit)	21
PARCELS IN POSSESSION	34

1. There are 13 parcels at Tram Road and Capital Circle SE requiring right of way acquisition and/or relocation services. . At this time, Blueprint is having these parcels appraised and the acquisition/relocation process is underway.



2. In addition to the right of way being acquired at Tram Road, Blueprint has also secured the necessary right of way from the City of Tallahassee, Southwood, and the State of Florida. These state lands were secured in April, 2005. The Southwood property was transferred to the City on May 16, 2005.



E1 – CAPITAL CIRCLE SOUTHEAST – Tram to Connie

Right-Of-Way Budget

Total Right-of-Way Budget	\$ 9,000,000
Connie to Centerview (Estimate)	\$ 3,500,000
Remaining Budgeted (Centerview to South of Tram)	\$ 5,500,000

N2 – CAPITAL CIRCLE NW/SW – EPD&E Study

Project Description:

The EPD&E Study limits for this 2.9 mile project extend from US 90/SR 10 (Tennessee Street) to Orange Avenue. Preliminary design of multilane improvements to Capital Circle NW/SW will extend from Tennessee Street to just south of SR 20 (Blountstown Highway/Pensacola Street).

Project Personnel:

Blueprint 2000 Project Manager: Jim Shepherd
H.W. Lochner Project Manager: Hugh Williams

Contract Cost & Schedule Status - Agreement No. 772/Authorization 1

Contract Commencement: 10MAY04
 Contract Completion: 10MAY07
Percent of Work Performed: 36.5%

Original Contract Amount: \$1,921,585.90
 Executed Supplemental Agreements: \$ 159,836.80
 Pending Supplemental Agreements: \$ 0.00
 Current Contract Amount: \$2,081,422.70
 Invoiced to Date: \$ 760,724.00
 Remaining Contract Amount: \$1,320,698.70
Percent of Contract Amount Complete (6/17/05): 36.5%

Original Contract Time: 1095 Days
 Contract Time Extensions: 0
 Current Contract Time: 1095 Days
 Contract Time Expended: 435 Days
 Contract Time Remaining: 660 Days
Percent Contract Time Expended (7/19/05): 39.7%

Schedule Milestones:

Kickoff Meeting	13JUL04	Cultural Assessment	07FEB05	Final Contamination	17OCT05
Draft Traffic Tech	01NOV04	Draft Pond Siting	09FEB05	Final Wetlands Eval.	17OCT05
Phase 1 Geotech	01DEC04	Draft Wetlands Eval.	21FEB05	30% Roadway Plans	21OCT05
Final Traffic Tech	13DEC04	ROW Control Map	01FEB05	Draft Coordination Rpt.	24OCT05
Water Quality Eval.	03JAN05	Alt. Public Meeting	24MAY05	Final Noise Study	14NOV05
Draft Air Quality	24JAN05	Natural Features	21JUL05	Final Coordination Rpt.	21NOV05
Draft Loc. Hydraulics	21FEB05	Final Pond Siting	09SEP05	Final PER to FHWA	22NOV05
Draft ESBA	21FEB05	Phase 2 Geotech	09SEP05	Final Cat Ex	25JAN06
Draft Contamination	21FEB05	Public Hearing	16SEP05	60% Roadway Plans	06FEB06
Draft Noise Study	07MAR05	Draft Cat Ex	10OCT05	Bridge Dev. Report	10FEB06
C. Stage Relocation	24JAN05	Final Air Quality	10OCT05	Env. Impact Analysis	13FEB06
Roadway Concepts	07FEB05	Final Loc. Hydraulics	17OCT05	90% ROW Maps	13FEB06
Draft PER	07FEB05	Final ESBA	17OCT05	Final ROW Maps	11APR06

N2 – CAPITAL CIRCLE NW/SW – EPD&E Study

Project Status:

Conducting remaining environmental and engineering analyses
Updating environmental and engineering reports
Evaluating public input and review comments, and preparing a recommendation for a preferred alternative

Activities Since Last Period:

- a. Completed the R/W cost estimates for the alternative alignments.
- b. Continued drainage analysis including pond siting analysis.
- c. Completed preparations for and held the Alternatives Public Information Meeting on 6/30/05.
- d. Continued updating the Environmental Reports based on review comments.
- e. Preparing the 4(f) application for determination of applicability.
- f. Continued R/W Survey activities.
- g. Conducting negotiations for SA #3, for extension of preliminary design services from SR 20 to Orange Avenue.

Planned Activities for Next Period:

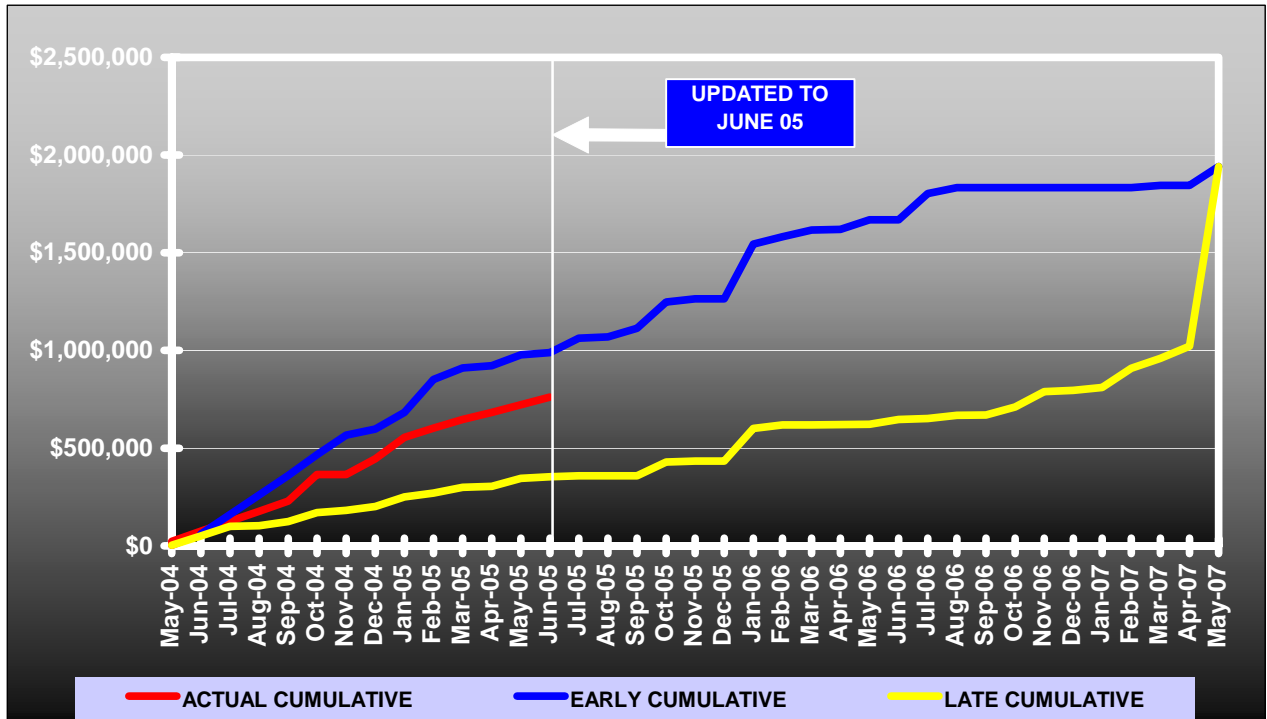
- a. Respond to comments received at the 6/30/05 Alternatives Public Information Meeting.
- b. Meet with key property owners adjacent to the proposed frontage roads to get their input on the design concepts.
- c. Evaluate public input from the June 30 meeting, and review comments from the PER, and develop a recommendation for a preferred alternative.
- d. Revise and resubmit R/W Control Survey based on review comments.
- e. Complete and submit the preliminary drainage and pond siting analysis.
- f. Submit the 4(f) determination of applicability.
- g. Complete negotiations for and provide NTP for SA #3.
- h. Commence design survey after approval of preferred alternative recommendation.

Significant issues and resolutions:

Typical section approval. – The typical sections were tentatively approved by the IA on 5/16/05. The typical sections were presented to the public at the Alternatives Public Information Meeting on 6/30/05.

N2 – CAPITAL CIRCLE NW/SW – EPD&E Study

Contract Financial Summary of Planned Vs. Actual Costs



W1 – CAPITAL CIRCLE SW – Springhill Rd. to SR 20

Project Description:

Capital Circle (SR 263) between Springhill Road (CR 2203) and Blountstown Highway (SR 20) a distance of approx. 4.5 miles.

Using the Blueprint 2000 & Beyond "Project Definitions Report", prepared by the Economic and Environmental Consensus Committee in 1999, and the Lake Bradford Sector Plan, conducted by the Tallahassee/Leon County Planning Department, as a foundation for the project, Blueprint 2000 staff has identified ten potential corridors/alignments. These corridors include upgrading Capital Circle along the existing alignment; upgrading and using a portion of either Springhill Road and/or Orange Avenue; constructing a new section of Capital Circle on a new alignment and using the existing roadway as a spur/access road to the airport; or, constructing a new roadway from the vicinity of the Capital Circle/Springhill Road intersection, heading west around the Tallahassee Regional Airport, to I-10.

Project Personnel:

Blueprint 2000 Planning Manager: Dave Bright
Blueprint 2000 Project Manager: Jim Shepherd, P.E.

Contract Cost & Schedule Status:

The current activities are being performed by Blueprint 2000 staff in order to narrow the number of proposed alternatives for Capital Circle. The most viable alternatives will be studied further in an upcoming PD&E Study. *Blueprint 2000 staff will provide recommendations to the IA at their Sept. 19, 2005 meeting.*

Schedule Milestones:

Jan. 18	First Citizens Group Meeting
Jan. 25	First Public Meeting
Feb. 24	Second Citizens Group Meeting
Mar. 1	Second Public Meeting
Mar. 29	Third Citizens Group Meeting
Apr. 5	Third Public Meeting
Aug. 11	Fourth Citizens Group Meeting
Aug. 16	Fourth Public Meeting
Sept. 6	TCC Approves Scope for PD&E Study
Sept. 19	IA Authorizes Blueprint Staff to Advertise for PD&E Consultant
Sept. 19	IA Approves Alignments that are to be included in PD&E Study

The advertisement and selection schedule issued for the PD&E Study in the January 2005 Progress Report has been postponed pending direction from the IA.

Project Status:

Blueprint 2000 staff compiling the data and public comments gathered to-date for the project. Blueprint 2000 staff evaluating alternatives proposed by Airport Gateway Committee and Lake Bradford Homeowners Association.

W1 – CAPITAL CIRCLE SW – Springhill Rd. to SR 20

Activities Since Last Period:

1. Met with CRTPA staff and TLCPD staff on June 22.
2. Met with Bill Norwood on June 24.
3. Attended Bradford Overlook Meeting on June 29.
4. Met with Rob Shiffer on July 7.
5. Attended Airport Master Plan Meeting on July 12.
6. Met with Richard Decoteau on July 15.

Planned Activities for Next Period:

1. Copy the Orange Avenue PD&E Study information (received on loan).
2. Prepare Meeting Minutes from third Citizens Group Meeting and third Public Meeting.
3. Compile all of the documentation received, and created, for the project.
4. Continue preliminary activities related to the advertisement for a PD&E Consultant.
5. Continue preparation for the Sept. 19 IA meeting.
6. Double-check the data shown in the matrix and determine if additional criteria should be added.
7. Evaluate additional alternatives proposed by Airport Gateway Committee and Lake Bradford Homeowners Association.
8. Create presentation for Greater Tallahassee Chamber of Commerce, 2005 Annual Community Conf., July 22-24.
9. Continue preparation for the Aug. 11 Citizens Group Meeting and Aug. 16 Public Meeting.

Significant issues and resolutions:

None at this time.

N1 – CAPITAL CIRCLE NW – US 90 to I-10

Project Description:

The proposed 1.991-mile roadway project (FPID: 219722-1) consists of upgrading the existing undivided rural facility to a six-lane divided urban (curb and gutter) facility. Upgrades to the West Tennessee, Tharpe, Hartsfield and Commonwealth intersections will also be included. The purpose of the roadway improvement project is to increase the capacity and safety of the existing highway. The roadway project will be designed, let and constructed by the Florida Department of Transportation, with advance funding provided by the Blueprint 2000 Intergovernmental Agency.

Project Personnel:

Blueprint 2000 Project Manager: Garrett Martin, P.E., Bill Little, P.E.
FDOT Design Project Manager: Brian Little, P.E.

Contract Cost & Schedule Status:

Not Applicable – The Project Design is being funded by FDOT.

Schedule Milestones:

Complete 100% Plans:	22DEC04
ROW, Permits and Utilities Clear:	06DEC04
Plans to Tallahassee (final processing):	15MAR05
Select CEI Consultant:	14MAR05
Letting Date:	25JUN05
Begin Construction:	15OCT05

Project Status:

100% plans received 1/10/05.
 Project Letting moved to June 2005.
 Right of way acquisition is complete, all OTs are in-hand – need to continue coordination until costs finalized.

Activities Since Last Period:

Bids received.
 Award.
 Utility coordination efforts began by CEI consultant
 Attended coordination meetings (6/27/05 & 7/6/05) with Midway and District 3 office, relating to administration of JPA
 Coordination for ground breaking ceremony

Planned Activities for Next Period:

Briefing for FDOT Midway office for this and all Blueprint projects and the agency.

Significant issues and resolutions:

None at this time

N1 – CAPITAL CIRCLE NW – US 90 TO I-10

Right-of-Way Status Report

As of July 15, 2005

CLOSED - (IN POSSESSION)	30
AGREEMENTS SECURED BUT NOT CLOSED	0
DELETED PARCELS	4
ACQUIRING THROUGH CONDEMNATION	91
TOTAL PARCELS ON PROJECT	125

FDOT is currently updating the R/W Cost Estimate. It currently indicates the estimate to be \$45,000,000

E2 – CAPITAL CIRCLE SE – Woodville to Tram

Project Description:

This project proposes to widen approximately 2.2 miles of the existing two-lane Capital Circle SE from Woodville Highway to Tram Road to an ultimate six-lane facility, mileposts 0.0 to 2.12. In addition, a transitional segment west of Woodville Highway (SR 263 MP 0.0 to approximately MP 0.2).

Project Personnel:

Blueprint 2000 Engineering Manager: Bill Little, P.E.
Blueprint 2000 Project Manager: Doug Martin, P.E.
DRMP Project Manager: John Burkett, P.E.

Contract Cost & Schedule Status:

Blueprint 2000 staff is performing current activities.

Schedule Milestones:

May 16 IA Auth. Staff to Negotiate & Execute Contract w/ Design Consultant (Completed)

Project Status:

Project is on schedule for issuing an award in mid-to-late July. Deadline is to have a negotiated contract by Sept. IA to get approval to award. City water/sewer JPA and change in project strategy causing slight delay. Have negotiated the staff hours and fees with DRMP.

Activities Since Last Period:

1. Held staff-hour negotiation meeting with DRMP
2. Finalized JPA document for water/sewer between parties, waiting on City Legal review.

Planned Activities for Next Period:

1. Finalize and execute JPAs with City of Tallahassee
2. Submit contract to City procurement for review
3. Execute contract
4. Issue LOA #1 and NTP

Significant issues and resolutions:

ISSUE:

Re-structuring project plan in order to be eligible for TRIP funding.

RESOLUTION:

Accelerated design schedule to 60% plans, then advertise for design-build.

ISSUE:

Finalizing JPA document with City Water/Sewer. Submitted to City legal

RESOLUTION:

Execute JPA. no later than 8/1.

E3 – CAPITAL CIRCLE SE – Woodville to Crawfordville

Project Description:

This project proposes to widen approximately 1.13 miles of the existing two-lane Capital Circle SE from Woodville Highway to Crawfordville Road to an ultimate six-lane facility,

FDOT Roadway ID: 55002000 SR 263 from MP 0.200 to MP 1.330

Project Personnel:

Blueprint 2000 Engineering Manager: Bill Little, P.E.
Blueprint 2000 Project Manager: Doug Martin, P.E.

Contract Cost & Schedule Status:

Blueprint 2000 staff is performing current activities.

Schedule Milestones:

May 29	Advertise for Design Consultant	(Completed)
Jun. 21	Letter of Interest (LOI) Due	(Completed)
Jun. 30	Shortlist Firms	(Completed)
Jul. 07	Issue Request for Proposals	(Completed)
Jul. 14	Pre-proposal Conference	(On-going)
Jul. 29	Written Proposals Due	(On-going)
Aug. 17	Finalize Review of Written Proposals	(On-going)
Aug. 17	Oral Presentations	(On-going)
Aug. 17	Selection of Design Consultant	(On-going)
Sept. 19	IA Authorizes Blueprint Staff to Negotiate and Execute Contract with Design Consultant (On-going)	

Project Status:

Firms have been short listed: URS, E.C. DRIVER and RS&H
 Waiting for RFP information submittal.

Activities Since Last Period:

1. Evaluated and short listed three firms
2. Issued RFP (7/7)
3. Held Pre-proposal conference (7/14).

Planned Activities for Next Period:

1. Review of RFP information submitted by firms (due 8/17)
2. Oral interviews of shortlisted firms (8/17).

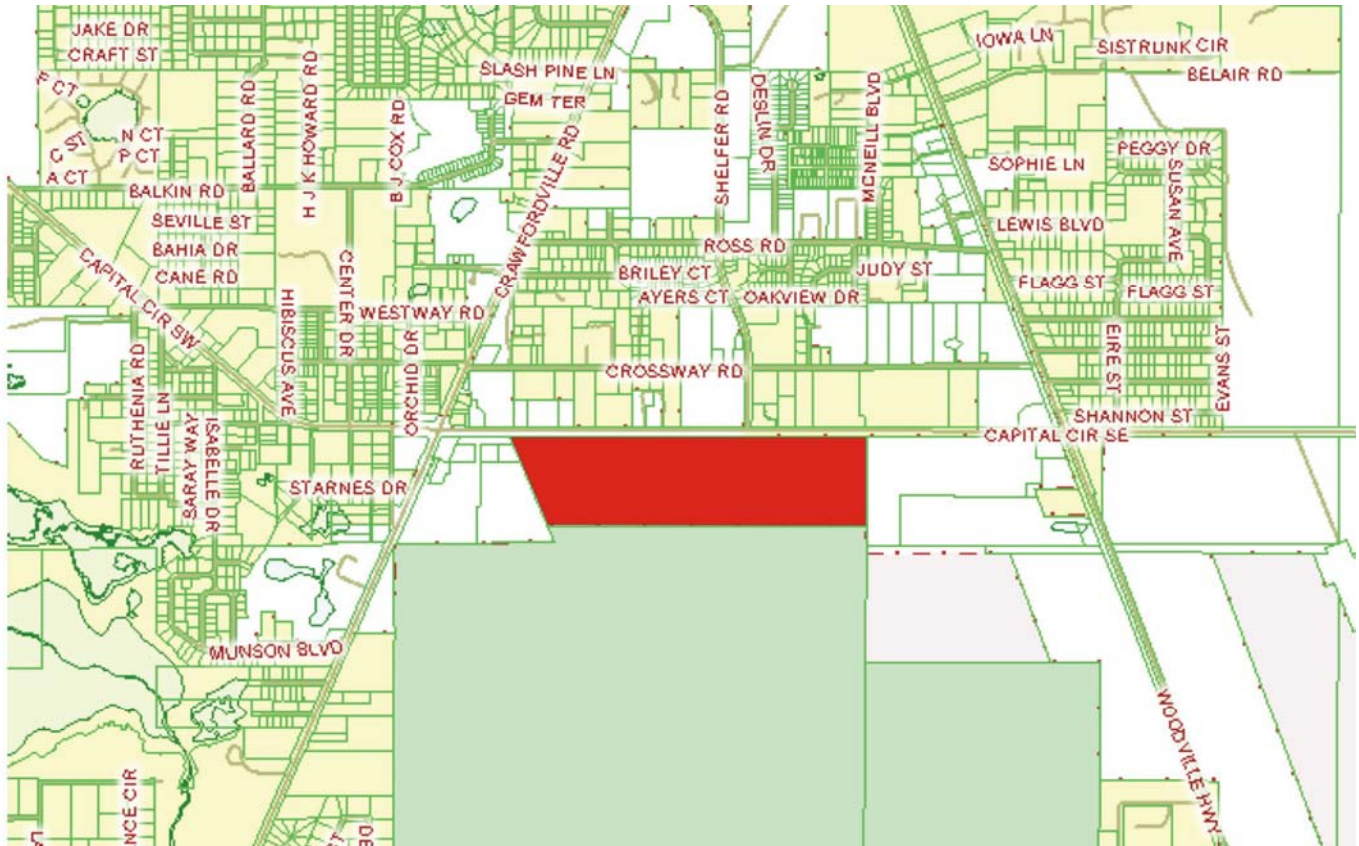
Significant issues and resolutions:

None at this time.

E3 – CAPITAL CIRCLE SE – Woodville to Crawfordville

Right-of-Way Status Report

As of July 15, 2005



1. Flea Market Tract owned by the United States Forest Service- Blueprint is currently working with the USFS to secure this approximate 100 Ac. parcel on Capital Circle between Woodville Hwy. And Crawfordville Hwy. At this time, Blueprint is having discussions with the Forrest Service to facilitate a possible land swap for this property and other properties that the USFS desires. These discussions are in the early stages and much work is still ahead for both Blueprint and the Forrest Service.

C0 – CAPITAL CASCADE TRAIL – Master Plan

Project Description:

This six mile long project area is commonly referred to as Capital Cascade Trail. It is Blueprint 2000 Map Area 3, a corridor along the St. Augustine Branch (SAB) from Tennessee Street to the SABs confluence with the Central Drainage Ditch (CDD) and then downstream along the CDD to its confluence with Munson Slough.

Project Personnel:

Blueprint 2000 Planning Manager: David Bright
Blueprint 2000 Project Manager: Ed Ringe
Genesis Project Manager: Mark Llewellyn

Contract Cost & Schedule Status - Agreement No. 533/Authorization 1 – As of 7/13/05

Contract Commencement: 30SEP03
 Contract Completion: 30SEP05
Percent of Work Performed: 90%

Original Contract Amount: \$1,399,282.35
 Executed Supplemental Agreements: \$ 43,477.13
 Pending Supplemental Agreements: \$ 90,162.25
 Current Contract Amount: \$1,442,759.48
 Invoiced to Date: \$1,338,606.15
 Remaining Contract Amount: \$ 74,153.33
Percent of Contract Amount Complete: 94.9%

Original Contract Time: 548 Days
 Contract Time Extensions: 183 Days
 Current Contract Time: 731 Days
 Contract Time Expended: 652 Days
 Contract Time Remaining: 79 Days
Percent Contract Time Expended: 89.2%

Schedule Milestones:

Complete Draft Storm Water Master Plan: 12AUG05
 Finalize Stormwater Master Plan for TCC, CAC and IA action 19SEP05
 Complete Final project report & Tech Appendix 30SEP05

Project Status:

Project is in Phase 1, Master Plan Development. There are five tasks identified on the scope.

Task 1 - Data Collection	100% Complete
Task 2 - Existing Stream Hydraulics Analysis	100% Complete
Task 3 - Comprehensive Corridor Master Plan	95% Complete
Task 4 - Public Information Program	88% Complete
Task 5 - Documentation	95% Complete

Phase 2, Tasks to be scoped and assigned as determined. Not established.

C0 – CAPITAL CASCADE TRAIL – Master Plan

Activities Since Last Period:

1. Submitted Updated Technical Report 2 (6/3/05) – comments received.
2. Submitted the updated Technical Report 3 (6/17/05) – comments now due 7/19/05
3. Received EPA Draft TMDL criteria from Theresa Heiker for St. Augustine Branch and Central Drainage Ditch.
4. Meeting to review the project status and approach to complete.
5. Met with County Public Works to discuss the project status and their concerns.
6. Met with the TCC Subcommittee to review the comments on Technical Report 2 and 3.

Planned Activities for Next Period:

1. Finalize Technical Reports 2 and 3
 - a. Respond to comments received and resubmit the reports on or before August 12, 2005.
 - b. Coordination with City Growth Management regarding the Existing Conditions Model and Natural Features Inventory submittal.
 - c. Schedule and conduct a project overview and site inspection with FDEP, ACOE and EPA to consider severing jurisdiction and to discuss TMDL issues (date to be determined).
2. Finalize the Phase II Scope of Services:
 - a. Segment 2 Design Scope of Services
 - b. Segment 4 Scope of Services for Historic Resources Analysis and Karst Features Analysis
 - c. FEMA Floodway Map revisions
3. Continue Coordination on Segment 2
 - a. Conduct a site inspection with CSX (date to be determined).
 - b. Request an Engineering Agreement from CSX Railroad (GEC)
 - c. Maintain contact with the City on the contamination cleanup
 - d. Participate in the 7/18/05 meeting with DMS
4. Prepare for the 9/6/05 TCC and the 9/8/05 CAC Meetings.
5. Schedule the final Public Information Meeting that will follow the September IA meeting.

Significant issues and resolutions

Issue: Adoption of TMDL criteria on SAB and CDD
Resolution: Blueprint will monitor EPA action to monitor possible impact to CCT Master Plan.

Issue: Leon High School - Segment 0
Resolution: Continue discussions with Bill Montford regarding preferred concept and associated cost.

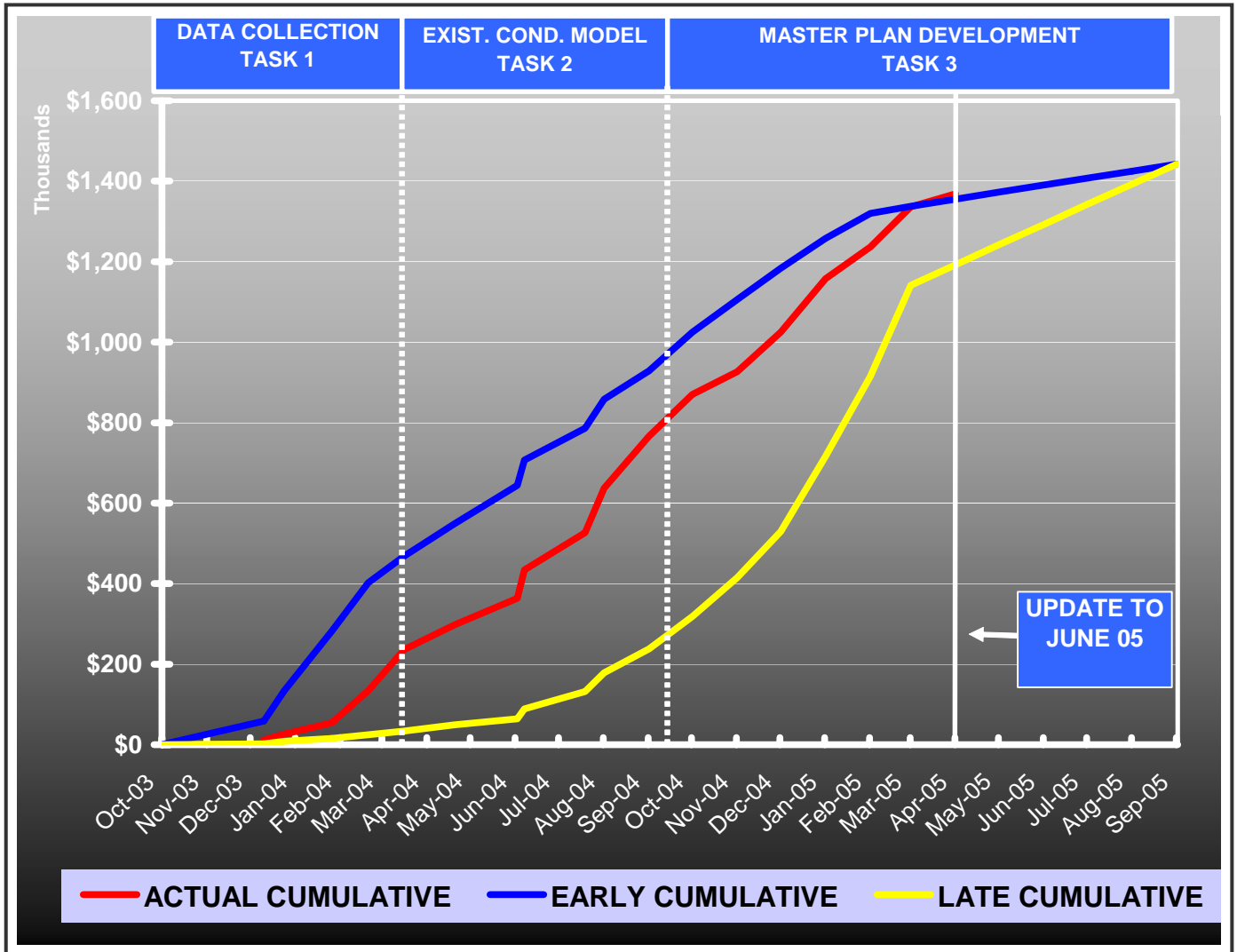
C0 – CAPITAL CASCADE TRAIL – Master Plan

Significant issues and resolutions (continued)

- Issue: Segment 2 Contamination Clean Up (focus on Cascade Park outfall channel)
Resolution: Provide close coordination with the City and with URS regarding the schedule and site reclamation. Special attention should be given to the channel section between the R/R Bridge and South Monroe. Jim Davis/Dave Bright to contact Jennette Curtis to discuss an approach to addressing this issue.
- Issue: FEMA Flood Map Amendment for the Existing Conditions (Segments 1, 2 and 3).
Resolution: Finalize the Scope of Work (Blueprint and City). Proceed with the application and submittal process as soon as possible.
- Issue: CSX Railroad Coordination (Segment 2)
Resolution: GEC to submit request for an Engineering Agreement.
- Issue: Coordination with FDOT and DMS regarding Segment 2 improvements.
Resolution: Blueprint (Phil Maher) will schedule and conduct the necessary meetings with the appropriate individuals and provide an update on the progress.
- Issue: Establish Operation and Maintenance Responsibilities for the project.
Resolution: Blueprint will schedule and meet with appropriate individuals at the City (and County?) (draft JPA?). Will need coordination with City & DMS for Segment 2.
- Issue: City Growth Management review of the Existing Conditions Model and the Draft Natural Features Inventory.
Resolution: Blueprint will continue to request and monitor progress on expedited review.

C0 – CAPITAL CASCADE TRAIL – Master Plan

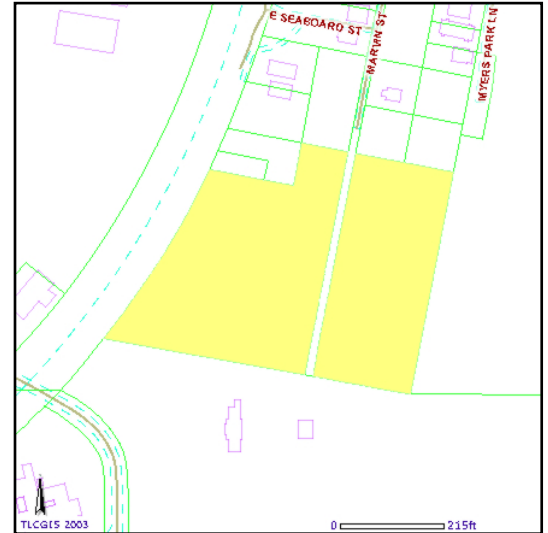
Contract Financial Summary of Planned Vs. Actual Costs with Time Extension



C0 – CAPITAL CASCADE TRAIL – Master Plan

Right-Of-Way Status Report

1. There are several parcels near Myers Park that Blueprint is attempting to purchase for stormwater retention. At present Greg Chelius with TPL has had discussions with the property owner and they indicated their willingness to sell property. Blueprint is currently having the property appraised. We will proceed with the purchase of this property in the near future.



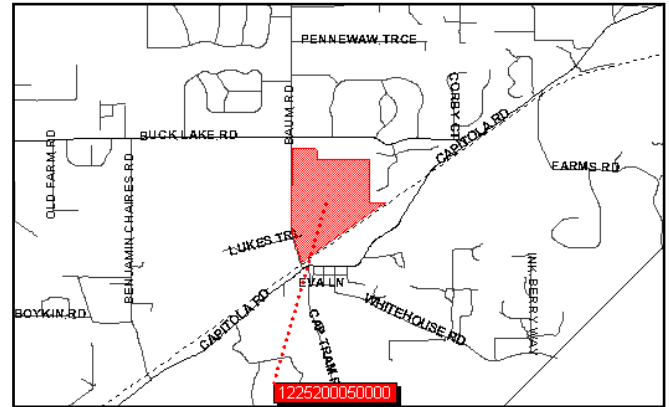
2. Blueprint purchased a residential property at 218 FAMU Way within our land banking program for Capital Cascade Trail. Blueprint was able to secure this property at the appraised value. Blueprint has currently begun the process to have this house demolished.



OTHER

Sensitive Land Acquisitions

1. Copeland Sink- At this time, Blueprint has secured an option to purchase this 168 Ac. parcel as part of a FCT Grant. This parcel is a portion of the parcels designated as protection of the Headwaters of the St. Marks.



2. Blueprint has secured an Option Agreement for a Conservation Easement on a 132 acre tract of land at the Headwaters of the St. Marks. This parcel is a Priority 1 parcel within the St. Marks Basin. We currently have an agreement in principle for the option agreement and are working towards securing the necessary appraisals to enable us to finalize the Conservation Easement within the next few months. This Conservation Easement is being secured in conjunction with the Northwest Florida Water Management District.

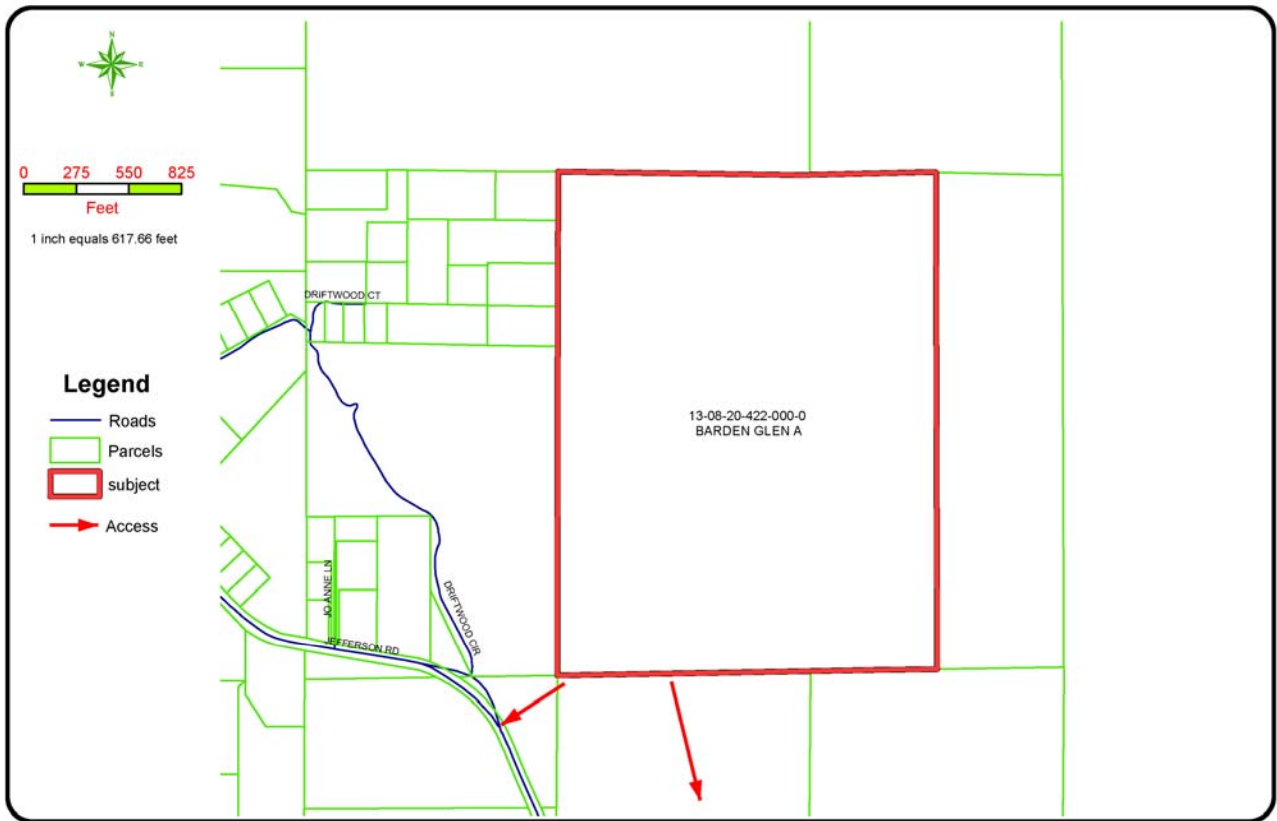


3. Blueprint is currently appraising and dealing with the property owners on a 200-acre parcel of land as part of a possible purchase or Conservation Easement for greenway preservation on Capital Circle NW.

OTHER

Sensitive Land Acquisitions (continued)

- Blueprint has recently begun discussions with the owner of the Patty Sink concerning that tract as well as other contiguous parcels for possible purchase of conservation easements as part of preservation of the Headwaters of the St. Marks.



DISCLAIMER
 This map was created using data obtained from the Tallahassee-Leon County Geographic Database. This document was prepared for the presentation of the information shown and is not intended to replace site-specific or use-specific investigations. Tallahassee-Leon County does not guarantee the accuracy of the data shown herein or the accuracy and reliability of any information or data obtained from this map. No responsibility is assumed for any errors or omissions or for any consequences arising from the use of the information or data shown herein.



PATTY SINK
Exhibit D
 Tax Map

Prepared For: Blueprint 2000	
Scale = 1: 5,932	Drawn By: weismans
Sheet No:	Checked by:
Job No:	Date Drawn: 04/30/2004

not guarantee this document to be free from errors or omissions and disclaims any responsibility or liability for any consequences arising from the use of the information or data shown herein.



Tax Map

File Name: E:\DataRequest\BP2000_Grants\042004\PattySink\Exhibit_D.mxd	
Sheet No:	Checked by:
Job No:	Date Drawn: 04/30/2004

File Name: E:\DataRequest\BP2000_Grants\042004\PattySink\Exhibit_D.mxd