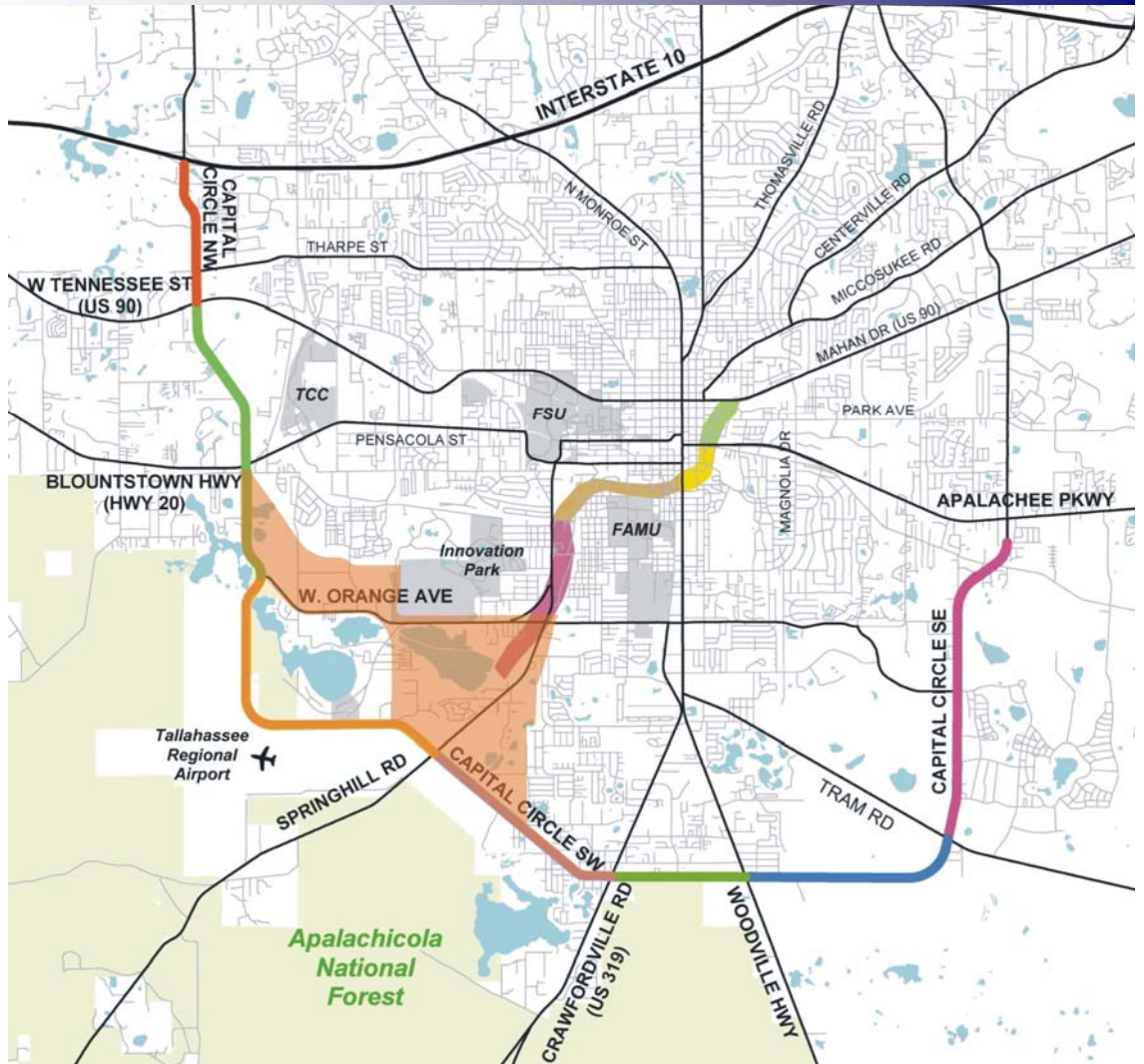


January, 2006



BLUEPRINT 2000 & BEYOND

1311 Executive Center Drive, Suite 109
Koger Center, Ellis Building
Tallahassee, Florida 32301

TABLE OF CONTENTS

I. Monthly Progress Reports

| | <u>Page</u> |
|---|-------------|
| A. GEC Progress Report | 1 |
| B. Public Involvement | 5 |
| C. N1 - Capital Circle Northwest (US 90 to I-10) | 6 |
| D. N2 - Capital Circle Northwest/Southwest (US 90 to SR 20) | 8 |
| E. W1 - Capital Circle Southwest (Springhill to SR 20) | 12 |
| F. E3 - Capital Circle Southeast (Woodville to Crawfordville) | 14 |
| G. E2 - Capital Circle Southeast (Woodville to Tram) | 16 |
| H. E1 - Capital Circle Southeast (Tram to Connie) | 19 |
| I. C0 - Capital Cascade Trail | 26 |

GEC – GENERAL ENGINEERING CONSULTANT

Project Description:

General Engineering Consultant Contract for the Blueprint Intergovernmental Agency. THE LPA GROUP INCORPORATED is the Prime Consultant with Jacobs Civil, Incorporated as the major subconsultant. Twelve additional subconsultants, seven of which are MBE firms, make up the LPA/Jacob Blueprint GEC Management Team.

Key Personnel:

Program Manager: Jerry Oshesky - The LPA Group
 Engineering Manager: Bill Little - Jacobs

Contract Cost & Schedule Status – Contract 597

| | | |
|--------------------------------------|----|--------------|
| Original Contract Amount: | \$ | 2,341,236.00 |
| Fiscal Year Re-Authorization: | \$ | 4,222,374.00 |
| Executed Supplemental Agreements: | \$ | 0.00 |
| Pending Supplemental Agreements: | \$ | 0.00 |
| Current Contract Amount: | \$ | 6,563,610.00 |
| Invoiced to Date: | \$ | 4,462,123.78 |
| Remaining Contract Amount: | \$ | 2,101,486.22 |
| Percent of Contract Amount Complete: | | 68.0% |

GEC – GENERAL ENGINEERING CONSULTANT

| Subconsultant Participation: | Contract Amt | % of GEC Contract | ETD |
|---|---------------------|--------------------------|-----------------|
| Moore Bass Consulting <i>Stormwater & Landscaping</i> | \$ 75,677.00 | 1.15 | \$ 43,267.93 |
| Pope Environmental <i>Environmental Services</i> | \$ 140,343.00 | 2.14 | \$ 102,877.50 |
| OLH International <i>Program Controls</i> | \$ 986,528.00 | 15.03 | \$ 830,567.79 |
| Katherine Beck Consulting <i>Government Relations</i> | \$ 25,000.00 | 0.38 | \$ 15,341.70 |
| Quest Corporation of America <i>Public Involvement</i> | \$ 267,959.00 | 4.08 | \$ 167,552.60 |
| Uzzell Advertising <i>Public Relations, Web Maint.</i> | \$ 132,405.00 | 2.02 | \$ 146,082.60 |
| Welch & Ward Architects <i>Architecture, Recreation Facilities</i> | \$ 8,000.00 | 0.12 | \$ 0.00 |
| THC Right-of-Way Services, Inc. <i>R/W appraisal and acquisition</i> | \$ 711,320.00 | 10.84 | \$ 507,826.16 |
| Berryman & Henigar <i>Survey and mapping</i> | \$ 93,055.00 | 1.42 | \$ 67,281.84 |
| Weigal - Veasey <i>Property Appraisal</i> | \$ 37,848.00 | 0.58 | \$ 0.00 |
| Williams Earth Sciences <i>Geotechnical Services</i> | \$ 28,024.00 | 0.43 | \$ 4,286.78 |
| Allen Nobles & Associates <i>Survey</i> | \$ 70,000.00 | 1.07 | \$ 73,726.00 |
| THE LPA GROUP (PRIME) <i>Prime Consultant</i> | \$ 2,123,008.00 | 32.35 | \$ 1,461,183.20 |
| JACOBS (PRIME SUB) <i>Prime Subconsultant</i> | \$ 1,864,443.00 | 28.41 | \$ 1,043,446.09 |
| <hr/> | | | |
| Total Contract: | \$ 6,563,610.00 | 100.00% | \$ 4,463,440.19 |

| | | |
|---------------------|------------------------|---------------|
| MBE Goal: | \$ 1,017,359.55 | 15.50% |
| MBE to Date: | \$ 1,305,690.12 | 29.25% |

GEC – GENERAL ENGINEERING CONSULTANT

Activities Since Last Period:

1. Continued Coordination for CCSE (E1) Permitting
2. Finalized Scope for CCT Seg 2
3. Coordinated w/FDOT for JPA's (E2, E2, N2, W1)
4. Regular Meetings with CCSE (E1) Contractor
5. Attended TEAMFL Mtg in Orlando
6. Continued Coordination w/ St. Joe for E2
7. Prepared plan for IT system conversion

Planned Activities for Next Period:

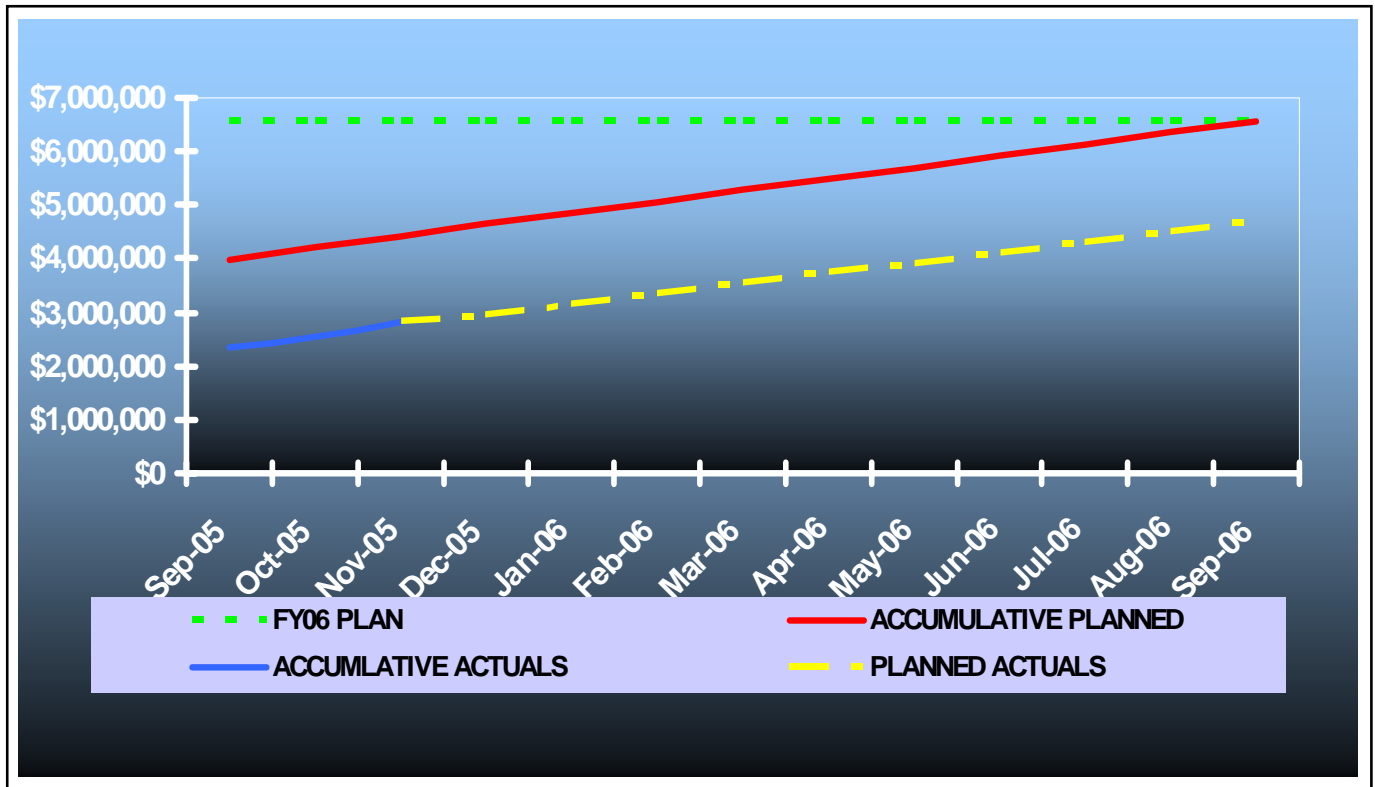
1. Coordination with SouthWood, CCSE
2. Continued Assistance with N1-CCNW
3. Continued active coordination with FDOT (incl JPA TBD)
4. Implement Strategies for Blueprint Fund Leveraging
5. Coordinate with SouthWood for future funding opportunities on E2
6. Coordination for IT System Implementation
7. Coordination for SFMP alternate drainage plan for E1
8. Update Blueprint Master Plan
9. Prep for TCC, CAC, IA Mtgs

Significant Issues and Resolutions:

None at this time.

GEC – GENERAL ENGINEERING CONSULTANT

GEC Contract Financial Summary of Planned Vs. Actual Costs – FISCAL YEAR 2006



GEC – PUBLIC INVOLVEMENT

Activities Since Last Period:

1. Updated W2-CCSW Concept Report
2. Attended two E1-CCSE CEI Progress Meetings
3. Coordination for CAC Audit Subcommittee Report
4. FCT Check Ceremony Coordination
5. Assisted with prep for IA

Planned Activities for Next Period:

1. Reschedule CCNW/SW Public Hearing
2. Prep for NW FL Legislative Days
3. FCT Check Ceremony Coordination
4. Prep for IA, CAC, TCC
5. Public Involvement and Park Programming fee negotiations for C2-CCT

Significant Issues and Resolutions:

ISSUE

None at this time.

RESOLUTION

N1 - CAPITAL CIRCLE NW – I-10 to US 90

Project Description:

The proposed 1.991-mile roadway project (FPID: 219722-1) consists of upgrading the existing undivided rural facility to a six-lane divided urban (curb and gutter) facility. Upgrades to the West Tennessee, Tharpe, Hartsfield and Commonwealth intersections will also be included. The purpose of the roadway improvement project is to increase the capacity and safety of the existing highway. The roadway project will be designed, let and constructed by the Florida Department of Transportation, with advance funding provided by the Blueprint 2000 Intergovernmental Agency.

Project Personnel:

| | | |
|------------------------|----------------------------------|--------------------|
| Blueprint 2000: | Project Manager: | Garrett Martin |
| | FDOT Operations Engineer: | Gabriella Corbin |
| | FDOT Construction: | William Stoutamire |
| | CEI Project Manager: | Jerry McClure |
| FDOT Design: | Project Manager: | Brian Little |
| | CEI Sr. Project Engineer: | Steve Martin |

Project Status:

The construction contract amount is for \$25,462,923.43 with M, of Tallahassee Inc.

Activities Since Last Period:

1. Jan. 14-16, 2006 lane closures to EB and WB lanes of W. Tennessee St., near the intersection at CCNW. All lanes reopened by Tues. Jan. 17, 2006
2. Work at Regional Pond 1 facility on-going.

Planned Activities for Next Period:

1. Attendance by Blueprint staff at Progress and CEI Meetings.
2. Review of utility adjustments and R/W agreements to estimate additional construction costs.
3. Lane closures will occur again Sat. Jan. 21 and Sun. Jan. 22, 2006 near the intersection of W. Tennessee St. and CCNW. All lanes will be reopened by Mon., Jan. 23, 2006.
4. Shifting of EB traffic on W. Tennessee St. (near the intersection of CCNW and W. Tennessee St) to the WB lanes will begin Jan. 30, 2006. Upon completion of work on the EB lanes at that intersection, WB traffic on W. Tennessee St. will be shifted to accommodate construction crews.

N1 - CAPITAL CIRCLE NW – I-10 to US 90

Right-Of-Way Status Report:

| | |
|-----------------------------------|-----|
| CLOSED - (IN POSSESSION) | 30 |
| AGREEMENTS SECURED BUT NOT CLOSED | 0 |
| DONATION | 4 |
| AQUIRED THROUGH CONDEMNATION | 91 |
| TOTAL PARCELS ON PROJECT | 125 |

FDOT is currently updating the R/W Cost Estimate. It currently indicates the estimate to be \$45,000,000

N2 - CAPITAL CIRCLE NW/SW – US 90 to SR 20

Project Description:

The Expanded Project Development and Environment (PD&E) Study limits for this 2.9 mile project extend from Tennessee Street (US 90/SR 10) to Orange Avenue (SR 371). This project also includes the preparation of approximately 60% design plans, etc. from Tennessee Street to Orange Avenue.

Project Personnel:

Blueprint 2000: Project Manager: Jim Shepherd
H.W. Lochner: Project Manager: Hugh Williams

Contract Cost & Schedule Status - Agreement No. 772/Authorization 1 - As of 1/10/2006

| | |
|--------------------------------------|-----------------|
| Contract Commencement: | 10May04 |
| Contract Completion: | 10May07 |
| Percent of Work Performed: | 50.3% |
| Original Contract Amount: | \$ 1,921,585.90 |
| Executed Supplemental Agreements: | \$ 159,836.80 |
| Pending Supplemental Agreements: | \$ 0.00 |
| Current Contract Amount: | \$ 2,081,422.70 |
| Invoiced to Date: | \$ 1,046,234.00 |
| Remaining Contract Amount: | \$ 1,035,188.70 |
| Percent of Contract Amount Complete: | 50.3% |
| Original Contract Time: | 1095 Days |
| Contract Time Extensions: | 0 Days |
| Current Contract Time: | 1095 Days |
| Contract Time Expended: | 610 Days |
| Contract Time Remaining: | 485 Days |
| Percent Contract Time Expended: | 55.7% |

Schedule Milestones:

| | | | |
|-----------------------|---------|-------------------------|---------|
| Kickoff Meeting | 13Jul04 | Final Pond Siting | 09Sep05 |
| Draft Traffic Tech | 01Nov04 | Phase 2 Geotech | 09Sep05 |
| Phase 1 Geotech | 01Dec04 | Public Hearing | 16Sep05 |
| Final Traffic Tech | 13Dec04 | Draft Cat Ex | 10Oct05 |
| Water Quality Eval. | 03Jan05 | Final Air Quality | 10Oct05 |
| Draft Air Quality | 24Jan05 | Final Loc. Hydraulics | 17Oct05 |
| Draft Loc. Hydraulics | 21Feb05 | Final ESBA | 17Oct05 |
| Draft ESBA | 21Feb05 | Final Contamination | 17Oct05 |
| Draft Contamination | 21Feb05 | Final Wetlands Eval. | 17Oct05 |
| Draft Noise Study | 07Mar05 | 30% Roadway Plans | 21Oct05 |
| C. Stage Relocation | 24Jan05 | Draft Coordination Rpt. | 24Oct05 |
| Roadway Concepts | 07Feb05 | Final Noise Study | 14Nov05 |
| Draft PER | 07Feb05 | Final Coordination Rpt. | 21Nov05 |
| Cultural Assessment | 07Feb05 | Final PER to FHWA | 22Nov05 |
| Draft Pond Siting | 09Feb05 | Final Cat Ex | 25Jan06 |
| Draft Wetlands Eval. | 21Feb05 | 60% Roadway Plans | 06Feb06 |
| ROW Control Map | 01Feb05 | Bridge Dev. Report | 10Feb06 |
| Alt. Public Meeting | 24May05 | Env. Impact Analysis | 13Feb06 |
| Natural Features | 21Jul05 | 90% ROW Maps | 13Feb06 |
| | | Final ROW Maps | 11Apr06 |

N2 - CAPITAL CIRCLE NW/SW – US 90 to SR 20

| Design Subconsultant Participation: | Contract Amt | % of Design Contract | ETD |
|---|------------------------|-----------------------------|------------------------|
| Environmental Geotechnical Specialists <i>Geotechnical</i> | \$ 126,831.57 | 6.09 | \$ 56,931.18 |
| Diversified Design & Drafting Services, Inc. <i>Survey and R/W Mapping</i> | \$ 443,781.44 | 21.32 | \$ 211,813.51 |
| Archaeological Consultants, Inc. <i>Cultural Resource Assessment</i> | \$ 10,947.15 | 0.53 | \$ 10,399.79 |
| HNTB/TEI <i>Traffic Analysis</i> | \$ 80,310.59 | 3.86 | \$ 78,704.38 |
| American Acquisition Group <i>Right of Way</i> | \$ 95,201.78 | 4.57 | \$ 85,974.52 |
| HW LOCHNER (PRIME) <i>Prime Consultant</i> | \$ 1,324,350.17 | 63.63 | \$ 602,410.62 |
| Total Contract: | \$ 2,081,422.70 | 100.00% | \$ 1,046,234.00 |

| | | |
|---------------------|----------------------|---------------|
| MBE Goal: | \$ 581,560.16 | 15.50% |
| MBE to Date: | \$ 279,144.48 | 26.68% |

Project Status:

- Fine tuning alternative concepts
- Updating environmental and engineering analyses
- Updating environmental and engineering reports
- Surveying and other preliminary design activities
- Preparing for the Public Hearing

N2 - CAPITAL CIRCLE NW/SW – US 90 to SR 20

Activities Since Last Period:

1. Continued topographic survey from Blountstown Hwy. to Tennessee St., and prepare for next phase of geotechnical activities, and other preliminary design activities.
2. Deleted the proposed frontage road on the east side of Capital Circle in front of the Delta Industrial Park property.
3. Added a frontage road in the NE quadrant of the Blountstown Highway/Capital Circle intersection.
4. Investigating access to the businesses across from Gum Road.
5. Continued updating the environmental and engineering reports based on review comments, and in areas where Blueprint staff is comfortable with the alignment.
6. Continued the structural analysis for bridges at CSX RR and Gum Swamp.
7. Assessing permit delegation to see if this is in the best interest of the project.
8. The north frontage road was revised and expanded.
9. Continued evaluation of project ponds for two scenarios: 1) regional/retrofit is included in the project, or 2) regional/retrofit is funded later in the program.
10. Completed the evaluation of the Delta Park property for suitability for stormwater management and mitigation.
11. Awaiting on-going coordination between Leon County School Board and Uncle Bob's Storage to resolve access and stormwater management issues.
12. Prepared a re-alignment of the recommended alternative (Combination #2) at the south end.
13. Continued negotiations on SA #3.

Planned Activities for Next Period:

1. Continue survey, commence next phase of geotechnical activities, and other preliminary design activities, from SR 20 to Tennessee St.
2. Continue updating the environmental and engineering reports based on review comments, and the selection of the preferred alternative.
3. Continue and complete negotiations for SA #3.
4. Continue coordination and resolution of access and storm water management issues related to Leon County School Board and Uncle Bob's, and Capital Hydraulics, etc.
5. Prepare for the Public Hearing, date to be determined.
6. Conduct final PAG meeting prior to the Public Hearing
7. Continue determining the drainage requirements for the project.

Significant Issues and Resolutions:

ISSUE

Transition south of Orange Avenue.

RESOLUTION

H.W. Lochner is reviewing and revising the transition based on direction from the IA at the December 15 meeting.

ISSUE

Pond and mitigation alternatives.

RESOLUTION

H.W. Lochner is investigating the ponds needed for the roadway improvements, as well as the potential for any regional or retrofit ponds.

ISSUE

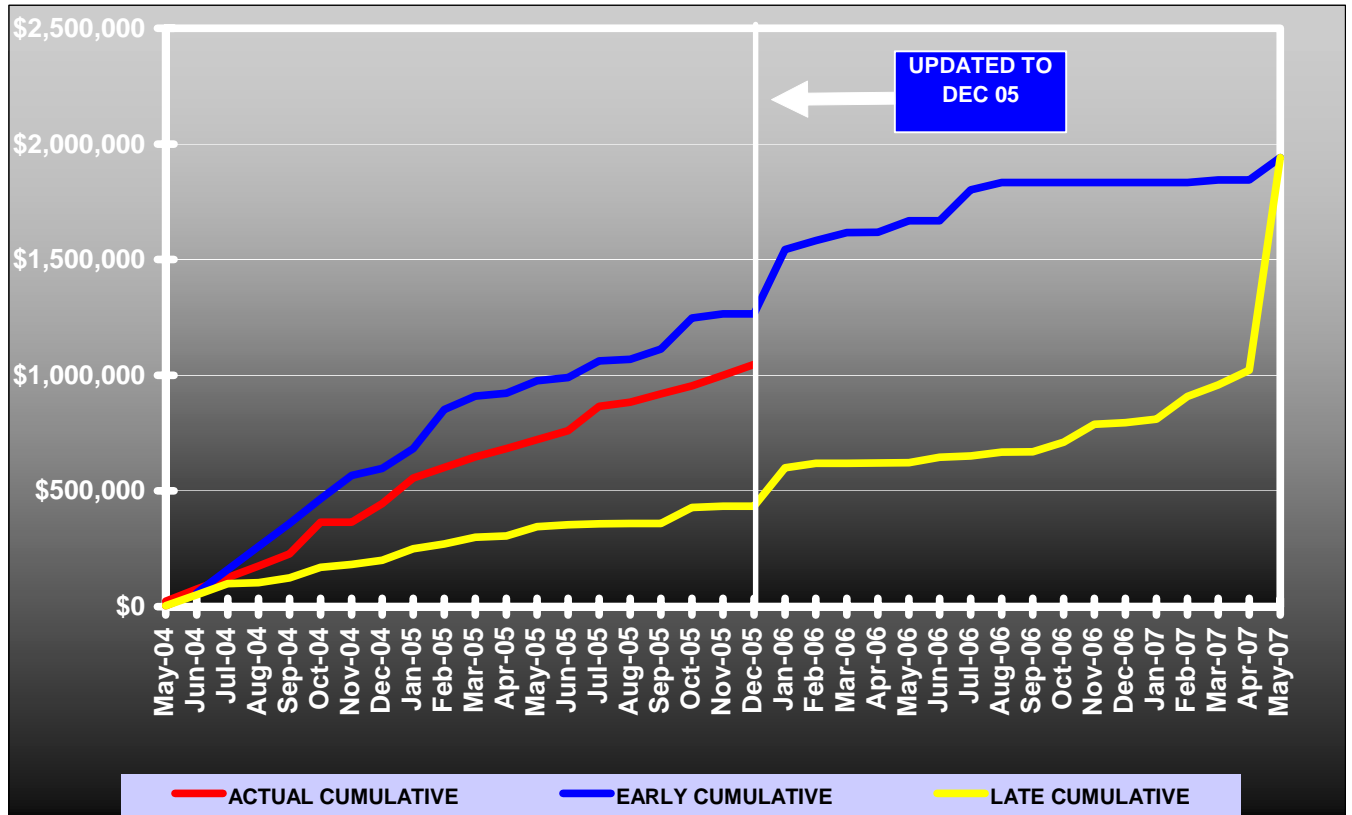
Leon County School Board Maintenance Facility access.

RESOLUTION

LCS staff received a task authorization from the School Board to begin work on joint access with Uncle Bobs Self Storage.

N2 – CAPITAL CIRCLE NW/SW – EPD&E Study

Contract Financial Summary of Planned Vs. Actual Costs



W1 - CAPITAL CIRCLE SW – Springhill Road to SR 20

Project Description:

Capital Circle (SR 263) between Crawfordville Road (SR 61 US 319) and Blountstown Highway (SR 20) a distance of approx. 6.7 miles.

Using the Blueprint 2000 & Beyond "Project Definitions Report", prepared by the Economic and Environmental Consensus Committee in 1999; the Lake Bradford Sector Plan, conducted by the Tallahassee/Leon County Planning Department; and based upon public input, Blueprint 2000 staff has identified and evaluated 17 alternative alignments, which are located in three corridors. Corridor 1 includes upgrading Capital Circle along the existing alignment; Corridor 2 includes constructing the proposed improvements to the south and west of the Tallahassee Regional Airport; Corridor 3 includes constructing the proposed improvements using portions of Orange Avenue, Tyson Road, Springhill Road, or a new alignment, etc. A Project Development and Environment (PD&E) Study will begin in 2006 to evaluate and determine the future improvements.

Project Personnel:

| | | |
|------------------------|--------------------------|--------------------|
| Blueprint 2000: | Planning Manager: | Dave Bright |
| | Project Manager: | Jim Shepherd, P.E. |

Contract Cost & Schedule Status:

| | | |
|--------------------------------------|--------|------|
| Contract Commencement: | | |
| Contract Completion: | | |
| Percent of Work Performed: | 0.0% | |
| Original Contract Amount: | \$ | 0.00 |
| Executed Supplemental Agreements: | \$ | 0.00 |
| Pending Supplemental Agreements: | \$ | 0.00 |
| Current Contract Amount: | \$ | 0.00 |
| Invoiced to Date: | \$ | 0.00 |
| Remaining Contract Amount: | \$ | 0.00 |
| Percent of Contract Amount Complete: | | |
| Original Contract Time: | 0 Days | |
| Contract Time Extensions: | 0 Days | |
| Current Contract Time: | 0 Days | |
| Contract Time Expended: | 0 Days | |
| Contract Time Remaining: | 0 Days | |
| Percent Contract Time Expended: | | |

Schedule Milestones:

| | |
|--|---------|
| First Citizens Group Meeting | 18Jan05 |
| First Public Meeting | 25Jan05 |
| Second Citizens Group Meeting | 24Feb05 |
| Second Public Meeting | 01Mar05 |
| Third Citizens Group Meeting | 29Mar05 |
| Third Public Meeting | 05Apr05 |
| Fourth Citizens Group Meeting | 11Aug05 |
| Fourth Public Meeting | 16Aug05 |
| TCC Approves Scope for PD&E Study | 01Feb06 |
| IA Authorizes Blueprint Staff to Advertise for PD&E Consultant | 19Sep05 |
| IA Approves Alignments that are to be included in PD&E Study | 01Feb06 |

W1 - CAPITAL CIRCLE SW – Springhill Road to SR 20

Project Status:

On Sept. 19, 2005, the IA authorized staff to:

1. Advertise, select and award a contract for a PD&E consultant
2. Include only Corridor 3 in the upcoming PD&E Study
3. Send a letter to FDOT stating the planned approach for the PD&E Study.

Blueprint 2000 sent the letter to FDOT on Oct. 3. The response was received on Nov. 3. Both the letter and the response were included in the Dec. 15 IA Agenda Item.

On December 15, 2005, the IA authorized staff to:

1. Include the segment from Springhill Rd. to Crawfordville Rd. in the CCSW PD&E Study
2. Invite Edward Prescott, FDOT District 3 Secretary, to the Feb. IA meeting
3. Do not delay the PD&E Study.

Based on the above, Blueprint 2000 staff will begin the process of advertising for a PD&E consultant, preparing the project scope and preparing the consultant contract.

Activities Since Last Period:

1. Updated Agenda Item for the Feb. 20, 2006, IA meeting.

Planned Activities for Next Period:

1. Continue preliminary activities related to the advertisement for a PD&E Consultant.
2. Load alternative alignments into ETDM.

Significant Issues and Resolutions:

ISSUE

Invite Secretary Prescott to Feb. IA meeting.

RESOLUTION

E3 - CAPITAL CIRCLE SE – Woodville Hwy to Crawfordville Rd

Project Description:

This project proposes to widen approximately 1.13 miles of the existing two-lane Capital Circle SE from Woodville Highway to Crawfordville Road to an ultimate six-lane facility,

FDOT Roadway ID: 55002000 SR 263 from MP 0.200 to MP 1.330

Project Personnel:

| | | |
|-------------------------|-----------------------------|---------------------|
| Blueprint 2000: | Engineering Manager: | Bill Little, P.E. |
| | Project Manager: | Gary Phillips |
| URS Corporation: | Project Manager: | Masoud Foroughi, PE |

Contract Cost & Schedule Status:

Blueprint 2000 staff is performing current activities.

Schedule Milestones:

| | | |
|---|------------|---------|
| Selection of Design Consultant | (On-going) | 16Aug05 |
| IA Auth. Blueprint Staff to Negotiate and Execute Contract with Design Consultant | (On-going) | 19Sep05 |
| Execute Contract/Notice to Proceed | | 06Feb06 |
| Project Schedule | | 17Feb06 |

Project Status:

Consultant Contract is being circulated for signatures.
 Part A - 60% design plans - total cost is \$885,689.21
 MBE Participation for Part A is 18.07 %
 Project Schedule will be submitted within 10 days of NTP

Activities Since Last Period:

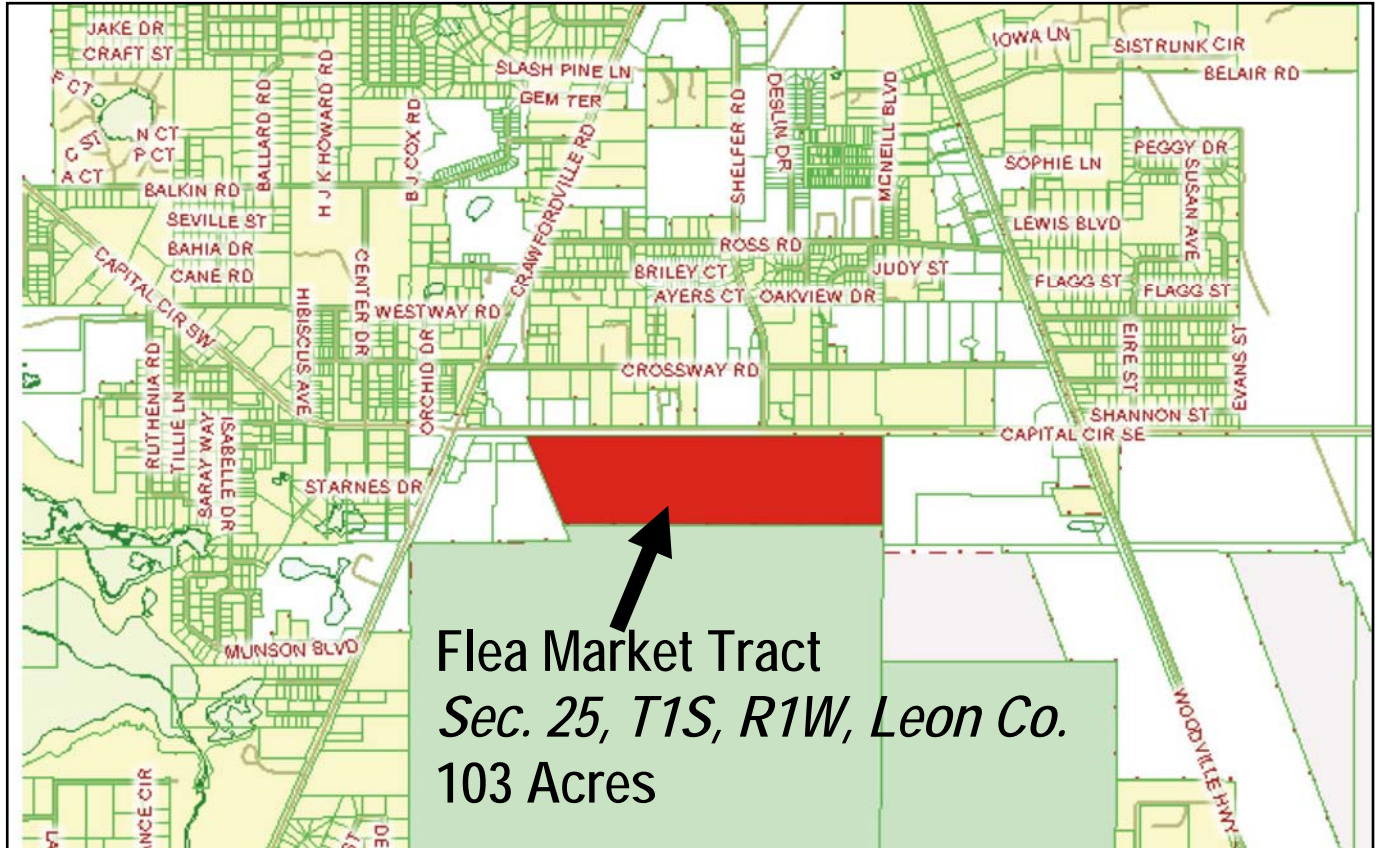
1. Contract has been finalized and is being circulated for signatures
2. Meeting scheduled for end of month with USFS to discuss Flea Market Tract

Planned Activities for Next Period:

1. Execute Contract and Issue LOA #1 for Part A - 60% Design
2. URS will prepare project schedule within 10 days of NTP

E3 - CAPITAL CIRCLE SE – Woodville Hwy to Crawfordville Rd

Right-Of-Way Status Report:



The Flea Market Tract owned by the United States Forest Service- Blueprint is currently working with the USFS to secure this 100 Acre parcel on Capital Circle between Woodville and Crawfordville Hwy. At this time, Blueprint is having discussions with the Forest Service to facilitate a possible land swap with this property and other properties that the USFS desires. Blueprint is having appraisals completed to determine the value of this tract and those that the USFS desires to swap. We are in the early stages of discussions and much work is still ahead for both Blueprint and the USFS. The appraisals for these parcels are due next month.

E2 - CAPITAL CIRCLE SE – Woodville Hwy to Tram Rd

Project Description:

This project proposes to widen approximately 2.2 miles of the existing two-lane Capital Circle SE from Woodville Highway to Tram Road to an ultimate six-lane facility, mileposts 0.0 to 2.12. In addition, a transitional segment west of Woodville Highway (SR 263 MP 0.0 to approximately MP 0.2).

Project Personnel:

Blueprint 2000: **Engineering Manager:** Bill Little, P.E.
 Project Manager: Doug Martin, P.E.
DRMP: **Project Manager:** John Burkett, P.E.
 Assistant PM: Bryant King

Contract Cost & Schedule Status - Agreement No. 1098 - As of 12/20/2005

Contract Commencement: 20Sep05
 Contract Completion: 01Sep07
 Percent of Work Performed: 13.0%
 Original Contract Amount: \$ 912,692.13
 Executed Supplemental Agreements: \$ 0.00
 Pending Supplemental Agreements: \$ 0.00
 Current Contract Amount: \$ 912,692.13
 Invoiced to Date: \$ 118,443.30
 Remaining Contract Amount: \$ 794,248.83
 Percent of Contract Amount Complete: 13.0%
 Original Contract Time: 711 Days
 Contract Time Extensions: 0 Days
 Current Contract Time: 711 Days
 Contract Time Expended: 91 Days
 Contract Time Remaining: 620 Days
 Percent Contract Time Expended: 12.8%

| Design Subconsultant Participation: | Contract Amt | % of Design Contract | ETD |
|--|----------------------|-----------------------------|----------------------|
| PBS&J <i>Utilities</i> | \$ 17,679.39 | 1.94 | \$ 0.00 |
| EGS <i>Geotechnical</i> | \$ 101,211.21 | 11.09 | \$ 71,442.47 |
| Poole <i>Surveying</i> | \$ 75,645.96 | 8.29 | \$ 37,649.60 |
| DRMP (PRIME) <i>Prime Consultant</i> | \$ 718,155.57 | 78.69 | \$ 209,774.11 |
| Total Contract: | \$ 912,692.13 | 100.00% | \$ 318,866.18 |

| | | |
|---------------------|----------------------|---------------|
| MBE Goal: | \$ 141,467.28 | 15.50% |
| MBE to Date: | \$ 109,092.07 | 34.21% |

E2 - CAPITAL CIRCLE SE – Woodville Hwy to Tram Rd

Project Status:

- Mainline design survey substantially complete.
- R/W Survey Underway
- Geotechnical Exploration Complete except pond sites
- Environmental Analysis Underway - NFI substantially complete
- Finalizing Pond Site Alternatives
- Phase I Submittal complete - awaiting comments

Activities Since Last Period:

1. Mainline Design Survey complete
2. Completing Section Work for right-of-way survey
3. Submitted Phase I Construction Plans
4. Completed field work for Geotechnical Report (Mainline only)
5. Substantially complete Natural Features Inventory
6. Initial coordination for landscape

Planned Activities for Next Period:

1. Coordination with St. Joe for pond site locations
2. Kickoff for LOA#2 (Utilities)
3. Complete and submit Draft Geotechnical Report
4. Complete and submit Natural Features Inventory
5. Complete and submit revised Project Schedule and Pay Curve

Significant Issues and Resolutions:

ISSUE

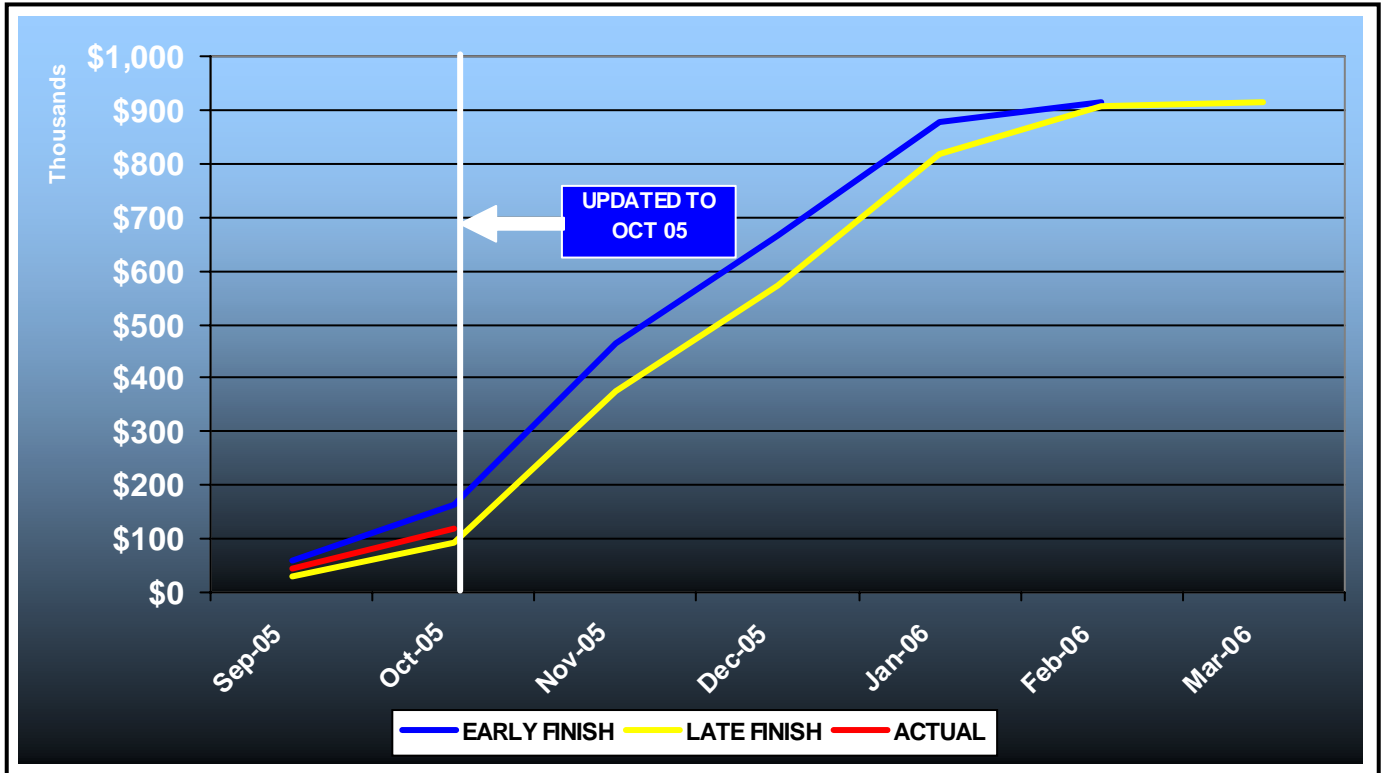
Potential agreement with St. Joe for pond sites

RESOLUTION

Accelerated schedule still required to aggressively pursue R/W acquisition in anticipation of additional funding. Some adjustments required to provide full Phase submittals for review. Pond sites critical in completion of Phase II submittal and Pond Siting Report.

E2 - CAPITAL CIRCLE SE – Woodville Hwy to Tram Rd

Contract Financial Summary of Planned Vs. Actual Costs



E1 - CAPITAL CIRCLE SE – Tram Rd to Connie Dr

Project Description:

The proposed 3.44-mile project along Capital Circle Southeast (US 319/SR261) extends from south of Tram Road to Connie Drive (milepost 1.931 and 5.371) in Leon County and includes expanding the existing two-lane undivided rural roadway to a six-lane divided urban (curb and gutter) facility. The purpose of the roadway improvement project is to increase the capacity and safety of the existing highway. New traffic signals, including ITS features, will be provided at six intersections: Tram Road, Shumard Oak Boulevard, Merchants Row Drive, Blair Stone Road, Orange Avenue and Old St. Augustine Road. The project also includes significant landscaping as well as pedestrian, bicycle and recreational amenities.

Project Personnel:

| | | |
|------------------------|------------------------------|------------------|
| Blueprint 2000: | Engineering Manager: | Bill Little |
| | Project Manager: | Marek Romanowski |
| | Construction Manager: | Garrett Martin |
| PBS&J: | Project Manager: | Alan Rainer |

Contract Cost & Schedule Status - As of 1/11/2006

| | |
|--------------------------------------|------------------|
| Contract Commencement: | 10Jan05 |
| Contract Completion: | 10Jan08 |
| Percent of Work Performed: | 26.2% |
| Original Contract Amount: | \$ 30,796,339.34 |
| Executed Supplemental Agreements: | \$ 5,603,351.19 |
| Pending Supplemental Agreements: | \$ 58,215.49 |
| Current Contract Amount: | \$ 36,399,690.53 |
| Invoiced to Date: | \$ 9,519,482.98 |
| Remaining Contract Amount: | \$ 26,880,207.55 |
| Percent of Contract Amount Complete: | 26.2% |
| Original Contract Time: | 1095 Days |
| Contract Time Extensions: | 11 Days |
| Current Contract Time: | 1106 Days |
| Contract Time Expended: | 366 Days |
| Contract Time Remaining: | 740 Days |
| Percent Contract Time Expended: | 33.1% |

Schedule Milestones:

| | |
|--|---------|
| Intergovernmental Agency (IA) Approval | 20Sep04 |
| Execute Contract | 22Dec04 |
| Notice to Proceed | 10Jan05 |
| Right of Way Acquisition, Phase 1 | 01May05 |
| Right of Way Acquisition, Phase 2 | 01Sep06 |
| 60% Design Submission - Segment I | 28Feb05 |
| 90% Design Submission - Segment II | 15Apr05 |
| Final Design Submission - Segment II | 25Jul05 |
| 90% Design Submission - Segment IV | 30Aug05 |
| 90% Design Submission - Segment III | 05Oct05 |
| 90% Design Submission - Segment I | 21Oct05 |
| Final Design Submission - Segment IV | 13Dec05 |
| Final Design Submission - Segment III | 20Dec05 |
| Final Design Submission - Segment I | 28Dec05 |
| Contract Completion | 08Jan08 |

E1 - CAPITAL CIRCLE SE – Tram Rd to Connie Dr

| Design Subconsultant Participation: | Contract Amt | % of Design Contract | ETD |
|---|---------------------|-----------------------------|-----------------|
| Diversified Design & Drafting Services, Inc. <i>Design survey</i> | \$ 111,758.50 | 5.59 | \$ 82,842.50 |
| Allen Nobles & Associates, Inc. <i>Tree survey for permit application</i> | \$ 18,000.00 | 0.90 | \$ 18,000.00 |
| Environmental & Geotechnical Specialists, Inc. <i>Geotechnical design services</i> | \$ 163,985.26 | 8.20 | \$ 160,786.00 |
| CMTS Florida, LLC <i>Inspection services</i> | \$ 210,000.00 | 10.50 | \$ 28,832.00 |
| Registe Sliger Engineering, Inc. <i>Structural design</i> | \$ 9,898.58 | 0.49 | \$ 8,017.85 |
| PBS&J (Design Lead) <i>Design</i> | \$ 1,486,457.66 | 4.08 | \$ 1,411,121.57 |
| Total Design Contract: \$ 2,000,100.00 100.00% \$ 1,709,599.92 | | | |

| | | |
|----------------------------|----------------------|---------------|
| Design MBE Goal: | \$ 495,642.34 | 15.50% |
| Design MBE to Date: | \$ 280,478.35 | 16.41% |

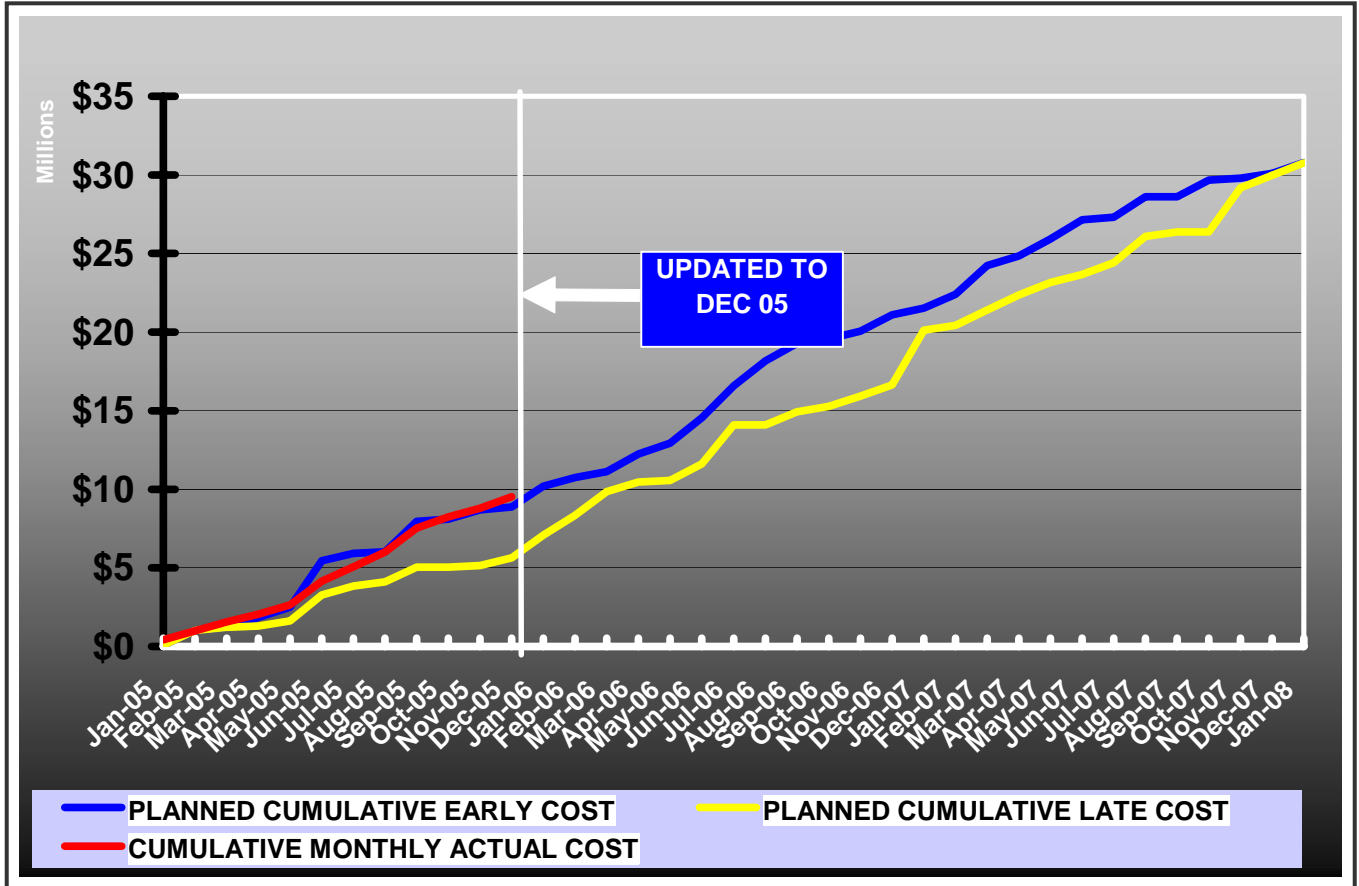
CONSTRUCTION

Total Construction Contract: \$34,309,509.53

| | | |
|----------------------------------|------------------------|---------------|
| Construction MBE Goal: | \$ 7,376,561.96 | 21.00% |
| Construction MBE to Date: | \$ | 3.21% |

E1 – CAPITAL CIRCLE SE – Tram Rd to Connie Dr

DB Team Financial Summary of Planned Vs. Actual Costs



| WORK PLANNED | PLANNED START | PLANNED FINISH | 2005 | | | | | | | | | | | | 2006 | | | | | | | | | | | | 2007 | | | | | | | | | | | | 2008 | | | |
|-------------------|---------------|----------------|-------------|---|---|---|---|---|---|---|---|---|---|---|------|---|---|---|---|---|---|---|---|---|---|---|------|---|---|---|---|---|---|---|---|---|---|---|------|---|---|---|
| | | | J | F | M | A | M | J | J | A | S | O | N | D | J | F | M | A | M | J | J | A | S | O | N | D | J | F | M | A | M | J | J | A | S | O | N | D | J | F | M | A |
| NOTICE TO PROCEED | 10-Jan-05 | | ▲ | | | | | | | | | | | | | | | | | | | | | | | | | | | | | | | | | | | | | | | |
| SEGMENT II A | 31-May-05 | 10-Mar-06 | [Gantt bar] | | | | | | | | | | | | | | | | | | | | | | | | | | | | | | | | | | | | | | | |
| *baseline* | 2-May-05 | 10-Mar-06 | [Gantt bar] | | | | | | | | | | | | | | | | | | | | | | | | | | | | | | | | | | | | | | | |
| SEGMENT II B | 19-May-06 | 6-Dec-06 | [Gantt bar] | | | | | | | | | | | | | | | | | | | | | | | | | | | | | | | | | | | | | | | |
| *baseline* | 3-Mar-06 | 1-Sep-06 | [Gantt bar] | | | | | | | | | | | | | | | | | | | | | | | | | | | | | | | | | | | | | | | |
| SEGMENT IV A | 16-Nov-05 | 12-Jun-06 | [Gantt bar] | | | | | | | | | | | | | | | | | | | | | | | | | | | | | | | | | | | | | | | |
| *baseline* | 21-Jun-06 | 11-Jan-07 | [Gantt bar] | | | | | | | | | | | | | | | | | | | | | | | | | | | | | | | | | | | | | | | |
| SEGMENT IV B | 13-Jun-06 | 5-Jul-07 | [Gantt bar] | | | | | | | | | | | | | | | | | | | | | | | | | | | | | | | | | | | | | | | |
| *baseline* | 12-Jan-07 | 5-Jul-07 | [Gantt bar] | | | | | | | | | | | | | | | | | | | | | | | | | | | | | | | | | | | | | | | |
| SEGMENT III A | 21-Jun-06 | 1-May-07 | [Gantt bar] | | | | | | | | | | | | | | | | | | | | | | | | | | | | | | | | | | | | | | | |
| *baseline* | 21-Jun-06 | 23-Jan-07 | [Gantt bar] | | | | | | | | | | | | | | | | | | | | | | | | | | | | | | | | | | | | | | | |
| SEGMENT III B | 19-May-06 | 6-Dec-06 | [Gantt bar] | | | | | | | | | | | | | | | | | | | | | | | | | | | | | | | | | | | | | | | |
| *baseline* | 13-Mar-06 | 1-Sep-06 | [Gantt bar] | | | | | | | | | | | | | | | | | | | | | | | | | | | | | | | | | | | | | | | |
| SEGMENT I | 1-May-07 | 21-Sep-07 | [Gantt bar] | | | | | | | | | | | | | | | | | | | | | | | | | | | | | | | | | | | | | | | |
| *baseline* | 24-Jan-07 | 5-Jun-07 | [Gantt bar] | | | | | | | | | | | | | | | | | | | | | | | | | | | | | | | | | | | | | | | |
| FINAL ACCEPTANCE | 24-Jan-08 | 24-Jan-08 | ▲ | | | | | | | | | | | | | | | | | | | | | | | | | | | | | | | | | | | | | | | |
| *baseline* | 1-Oct-07 | 1-Oct-07 | ▲ | | | | | | | | | | | | | | | | | | | | | | | | | | | | | | | | | | | | | | | |

E1 – CAPITAL CIRCLE SE – Tram Rd to Connie Dr

Project Status:

Erosion Control and Clearing and Grubbing work is complete from Tram Road to Merchants Row Boulevard. EMP Conditional permit for Segment 2 has been granted by COT Growth Management on 10/31/05. Road construction between Tram Road and Merchants Row Boulevard is underway, as per EMP permit conditions. Design of Segments 1, 3 and 4 is 90% complete. The 90% plans have been reviewed by Blueprint and are currently being reviewed by PW. Conditional permit to place fill on Segments 2 and 3 has been granted by COT. Fill permit has also been granted by DEP for Segments 2 and 3. Clearing and grubbing and installation of erosion control measures on Segment 2 are complete. Placing of fill on Segments 2 and 3 is in progress. Work on COT Water Utility 30" Sanitary Bypass (WP 1) has been completed. Work on COT Water Utility potable water, re-use water and gravity sewer lines installation and relocation is underway. Drainage pipe is being placed south of Pond 3 as well as north of Pond 4.

As of 1/6/06 – Embankment and base material has been placed and compacted. Asphalt placement anticipated to start on January 17th. Drainage pipe placement is continuing. The DRB meeting has been held on January 10th. No major erosion control, safety, or maintenance of traffic issues to date. Utilities have been adjusted for Segment 2.

Activities Since Last Period:

1. The 90% complete plans for Seg. 4, 3, and 1 were reviewed by BP2K and Leon County Public Works. They are being reviewed by COT. Interim drainage solution for Seg. 3, 2 and 1 was reviewed by GM at meeting with PW and SouthWood on 12/20/05.
2. DB Team continued work on Seg. 2 MOT plans revisions to continue work on Seg. 2A, east of CCSE.
3. DB Team revised Seg. 4 and 1 MOT plans as per Leon County and COT PW comments. Proposed road closures and detours at Tram Road and Old St. Augustine Road intersections await formal approval by the County BOCC on 1/24/06.
4. DB Team submitted Utility Schedules for Seg. 3 and 4. The Schedules are being reviewed by COT Streets & Drainage.
5. Hauling and compacting of embankment material continued on Seg. 2 and 3 as per fill permit obtained from COT and DEP.
6. DRB board Mtg. 1/10/06.
7. Pre-Paving Conference on 12/14/05.
8. Compacting embankment material and pouring curb and gutter, Seg. 2.
9. Drainage work, Segment 2.

Planned Activities for Next Period:

1. Conduct design progress meeting and CEI meeting.
2. Continue working towards 100% plans on Seg. 1, 3 and 4.
3. Submit EMP permit application for Seg. 4, 3, and 1. Continue working with SouthWood on interim drainage solution for Seg. 2, 1 and 3.
4. Finalize coordination of the utility permits with COT Streets and Drainage for Seg. 1, 3 and 4.

Construction Activities:

1. Compacting embankment material and base, Seg. 2.
2. Drainage work, Seg. 2.
3. Placement of asphalt in Seg. 2 beginning on Jan. 17th.

E1 – CAPITAL CIRCLE SE – Tram Rd to Connie Dr

Significant Issues and Resolutions:

ISSUE

1. Right-of-way and easement issues with COT Electric Utility.
2. Permitting.
3. Mitigation of High Quality Successional Forest.

RESOLUTION

Re. pt.2: Received approval of design and mitigation measures for Canopy Road at the intersection of Old St. Augustine Road and CCSE. Interim drainage solution is being proposed by the Design-Build Team to facilitate EMP permit processing independently of the approval of SouthWood SFMP by the City.

E1 – CAPITAL CIRCLE SE – Tram Rd to Connie Dr

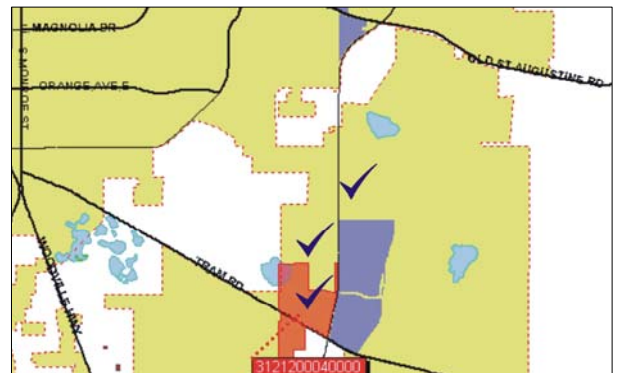
Right-Of-Way Status Report:

| | |
|---------------------------------------|----|
| NEGOTIATING | 4 |
| SECURED THROUGH OT | 13 |
| DONATION | 14 |
| SECURED THROUGH NEGOTIATED SETTLEMENT | 28 |
| AGREEMENT SECURED BUT NOT CLOSED | 1 |
| TOTAL PARCELS ON PROJECT | 60 |

- 15 There are 13 parcels at Tram Road and Capital Circle SE requiring right of way acquisition and/or relocation services. Blueprint has completed the appraisals and made offers. At the present time, we are negotiating with property owners for the purchase of the necessary right of way. In addition, the relocation process is also underway.



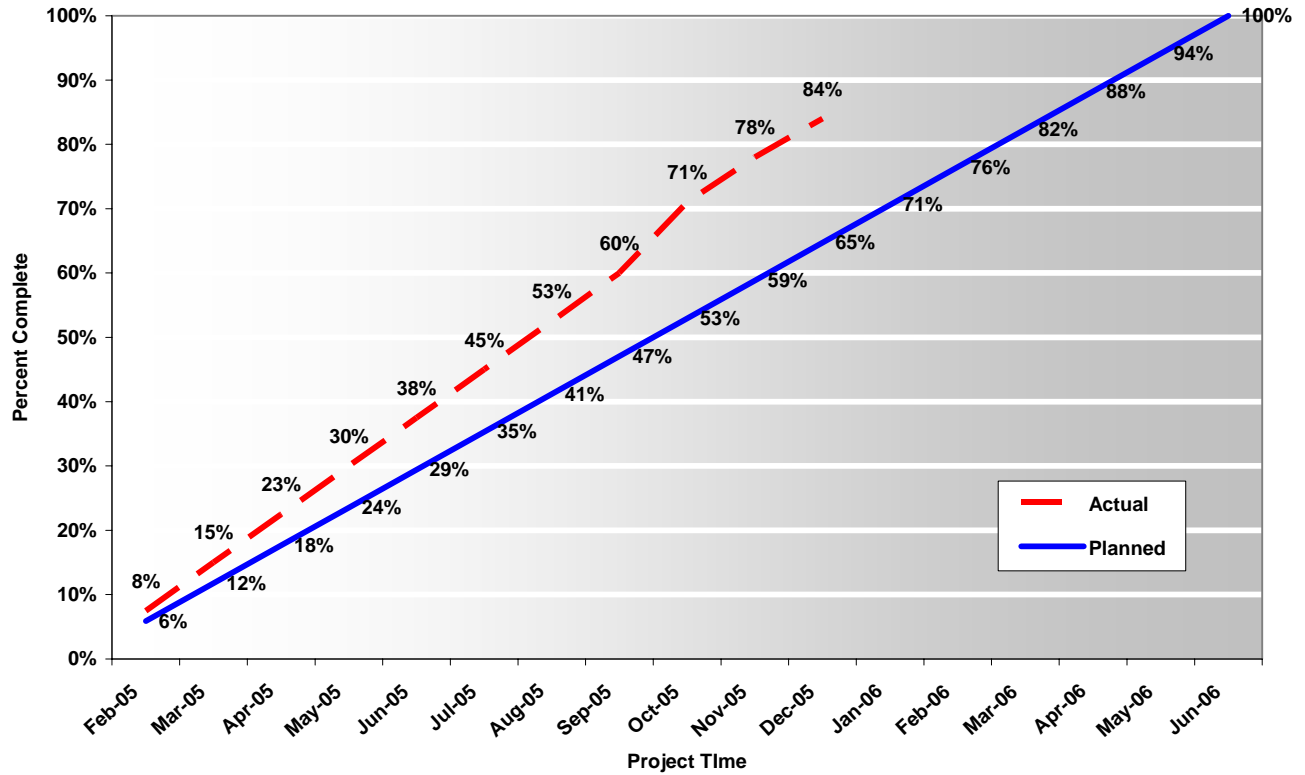
- 15 In addition to the right of way acquired by the City of Tallahassee, the SouthWood Property being donated within the JPA, and the parcels at Tram Road, there were also several tracts of land and right of way needed from the State of Florida. These state lands were secured in April. The SouthWood property was transferred to the City on May 16, 2005.



E1 – CAPITAL CIRCLE SE – Tram Rd to Connie Dr

Right-Of-Way Status Report:

**Right-of-Way Aquisition Effort
 Capital Circle Southeast**



C0 – CAPITAL CASCADES TRAIL – Master Plan

Project Description:

This six mile long project area is commonly referred to as Capital Cascade Trail. It is Blueprint 2000 Map Area 3, a corridor along the St. Augustine Branch (SAB) from Tennessee Street to the SABs confluence with the Central Drainage Ditch (CDD) and then downstream along the CDD to its confluence with Munson Slough.

Project Personnel:

| | | |
|------------------------|--------------------------|------------------------|
| Blueprint 2000: | Planning Manager: | David Bright |
| | Project Manager: | Ed Ringe/Gary Phillips |
| Genesis: | Project Manager: | Mark Llewellyn |

Contract Cost & Schedule Status – Agreement No. 533/Authorization 1 – As of 12/12/2005

| | |
|--------------------------------------|-----------------|
| Contract Commencement: | 08Oct03 |
| Contract Completion: | 08Apr05 |
| Percent of Work Performed: | 90.0% |
| | |
| Original Contract Amount: | \$ 1,399,282.35 |
| Executed Supplemental Agreements: | \$ 133,639.38 |
| Pending Supplemental Agreements: | \$ 0.00 |
| Current Contract Amount: | \$ 1,532,921.73 |
| Invoiced to Date: | \$ 1,479,323.35 |
| Remaining Contract Amount: | \$ 53,598.38 |
| Percent of Contract Amount Complete: | 96.5% |
| | |
| Original Contract Time: | 548 Days |
| Contract Time Extensions: | 266 Days |
| Current Contract Time: | 814 Days |
| Contract Time Expended: | 796 Days |
| Contract Time Remaining: | 18 Days |
| Percent Contract Time Expended: | 97.8% |

Schedule Milestones:

| | |
|--|---------|
| Complete Draft Storm Water Master Plan | 31Jul05 |
| Finalize Stormwater Master Plan for TCC, CAC and IA action | 19Sep05 |
| Complete Final project report & Tech Appendix | 30Sep05 |
| Complete Draft Storm Water Master Plan: | 31Jul05 |
| Finalize Stormwater Master Plan for TCC, CAC and IA action | 19Sep05 |
| Complete Final Project Report & Tech Appendix | 30Nov05 |

C0 – CAPITAL CASCADES TRAIL – Master Plan

| Design Subconsultant Participation: | Contract Amt | % of Design Contract | ETD |
|---|---------------------|-----------------------------|---------------|
| EGS | | | |
| <i>Environmental</i> | \$ 84,885.47 | 5.54 | \$ 84,885.47 |
| Moore Bass | | | |
| <i>Landscape Architecture</i> | \$ 115,008.00 | 7.50 | \$ 110,639.49 |
| Archaeological Consultants Inc. | | | |
| <i>Historic and Archaeological</i> | \$ 27,162.95 | 1.77 | \$ 27,162.95 |
| CDM | | | |
| <i>Stormwater</i> | \$ 235,598.00 | 15.37 | \$ 232,699.21 |
| Biological Research Associates | | | |
| <i>Natural Features Inventory</i> | \$ 24,340.00 | 1.59 | \$ 18,646.12 |
| Greenways, Inc. | | | |
| <i>Park Programming</i> | \$ 19,455.00 | 1.27 | \$ 12,655.19 |
| Jennings Environmental | | | |
| <i>Stream Morphology</i> | \$ 9,700.00 | 0.63 | \$ 9,635.60 |
| GENESIS GROUP (PRIME) | | | |
| <i>Prime Consultant</i> | \$ 1,016,772.32 | 66.33 | \$ 982,999.32 |
| Total Contract: \$ 1,532,921.74 100.00% \$ 1,479,323.35 | | | |

| | | |
|---------------------|----------------------|---------------|
| MBE Goal: | \$ 237,602.87 | 15.50% |
| MBE to Date: | \$ 222,687.91 | 15.05% |

Project Status:

Project is in Phase 1, Master Plan Development. There are five tasks identified on the scope.

| | |
|--|---------------|
| Task 1 - Data Collection | 100% Complete |
| Task 2 - Existing Stream Hydraulics Analysis | 100% Complete |
| Task 3 - Comprehensive Corridor Master Plan | 100% Complete |
| Task 4 - Public Information Program | 100% Complete |
| Task 5 - Documentation | 98% Complete |

Phase 2 and Master Plan Expansion Tasks to be scoped and LOA's issued.

C0 - CAPITAL CASCADES TRAIL - Master Plan

Activities Since Last Period:

1. Prepared Underline/Strikethrough version of Scope of Work for Segment 2 Design and Permitting follow-up review meeting scheduled for 1/20/06
2. Prepared Underline/Strike though version of Draft Scope of Work for Master Plan Expansion - follow-up review meeting scheduled for 1/12/06
3. Continuing to coordinate with COT Remediation Project on hydraulic and aesthetic options for lower pond and channel area
4. Prepared draft JPA for COT Remediation Project
5. Contacted and sent correspondence to CSX to initiate Preliminary Engineering Agreement again
6. Contacted (via e-mail and phone conversations) City Electric to discuss relocating transmission and distribution lines in Segment 2 and 3 underground - will follow-up with letter
7. Prepared Cost Estimates for both Scopes of Work

Planned Activities for Next Period:

1. Obtain TCC approval of Segment 2 Design and Permitting Scope, begin staff hour and fee proposal negotiations
2. Finalize Technical Reports 2 and 3
3. Obtain TCC approval of Master Plan Expansion, begin staff hour and fee proposal negotiations
4. Select preferred option for lower pond and channel area with COT and execute JPA
5. Pursue easement approval from DEP for Parcels C, D and E
6. Follow-up with CSX regarding the Engineering Agreement
7. Collect traffic counts at Van Buren and Gaines Street e/o Meridian to assess closure of Gadsden Road.
8. Present Segment 2 Preferred Concept E to FDOT EMO - brown bag lunch
9. Prepare scope and cost estimate to complete Myers Park SWMF Feasibility Report
10. Prepare letter to IA documenting coordination efforts with Remediation Project, e.g. preferred design, fair share costs

Significant Issues and Resolutions:

ISSUE

Segment 2 Coordination with Remediation Project

RESOLUTION

Blueprint to work with COT and Remediation Consultant/Contractor (WRS) to incorporate the design and construction of the lower pond and channel slope stabilization south of Railroad Crossing into WRS Contract. COT will advance fund work and then seek reimbursement from Blueprint sometime in FY 2008.

ISSUE

FEMA Flood Map Amendment for the Existing Conditions (Segments 1, 2 and 3).

RESOLUTION

Finalize the Scope of Work (Blueprint and City). Proceed with the application and submittal process as soon as possible.

ISSUE

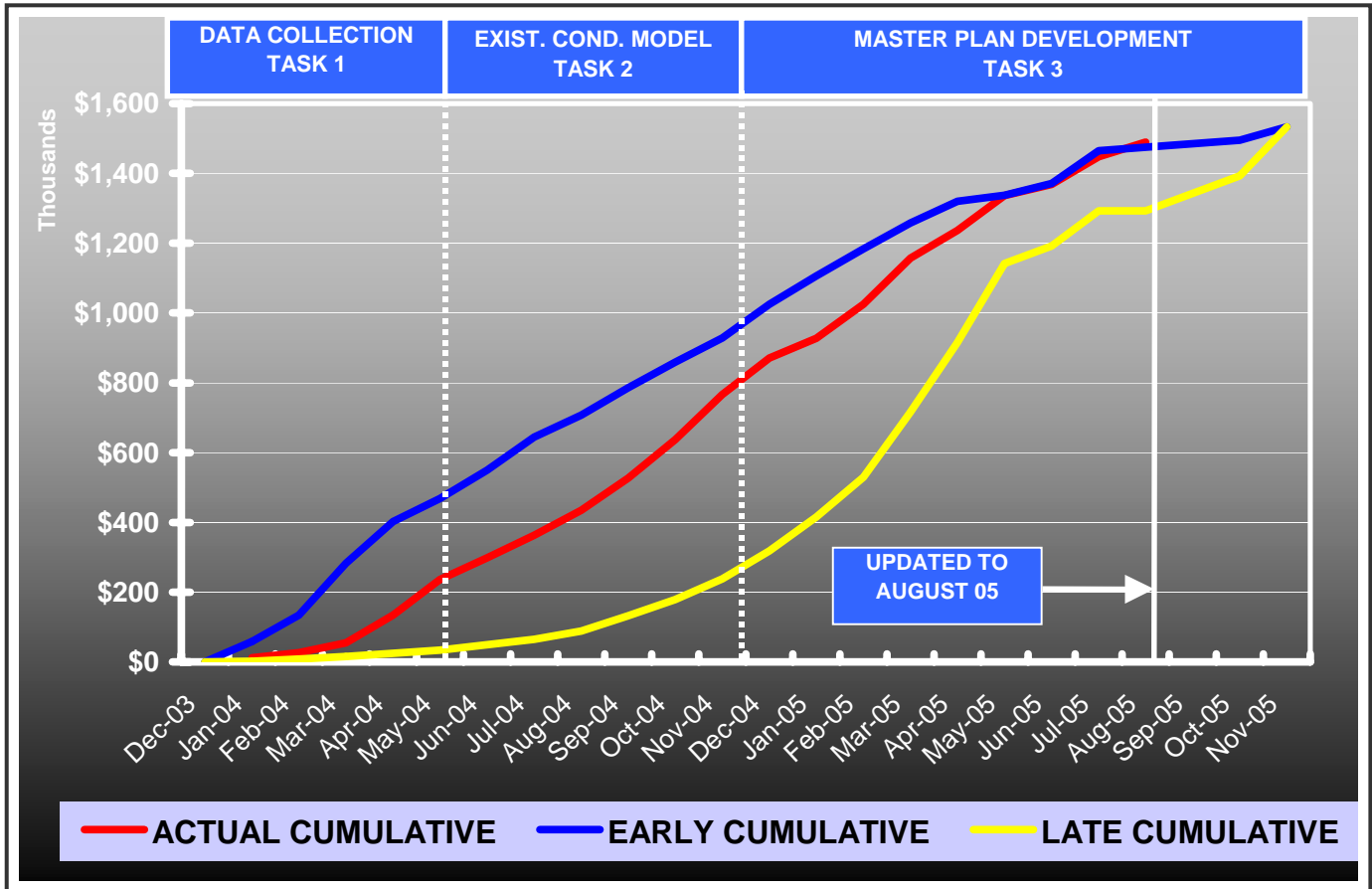
Jurisdictional Severance

RESOLUTION

DEP and Blueprint completed wetlands field review this month. Anticipate follow-up meeting with ACOE and DEP and agency direction/requirements on severance

C0 – CAPITAL CASCADE TRAIL – Master Plan

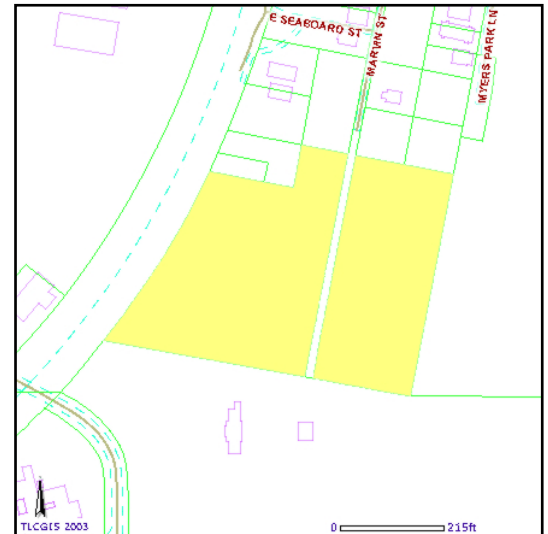
Contract Financial Summary of Planned Vs. Actual Costs with Time Extension



C0 – CAPITAL CASCADE TRAIL – Master Plan

Right-Of-Way Status Report:

1. There are several parcels near Myers Park that Blueprint and TPL are attempting to purchase for stormwater retention. At present Greg Chelius with TPL has had discussions with the property owner and they indicated their willingness to sell property. Blueprint has had the property appraised and are working through TPL and the property owner in an attempt to purchase this property in the near future. The property owner is currently having this property appraised.



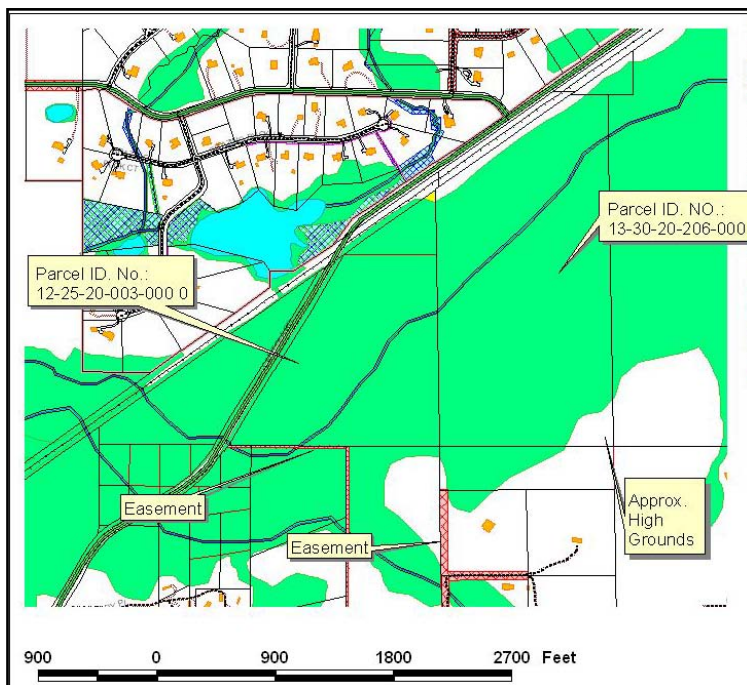
2. Blueprint purchased a residential property at 218 FAMU Way within our land banking program for Capital Cascade Trail. Blueprint was able to secure this property at the appraised value. Blueprint met with to confirm the property and structure were not eligible for the NRHP and could be demolished as soon as possible due to health and safety concerns SHPO agreed and we have recently contracted with a consultant to manage the demolition of this house.



OTHER

Sensitive Land Acquisitions

1. Copeland Sink- Blueprint has secured this 168 Ac. parcel as part of a FCT Grant. This parcel is a portion of the parcels designated as protection of the Headwaters of the St. Marks. The FCT recently provided Blueprint with \$671,000.00 as their portion of the total costs.



2. Blueprint recently secured a Conservation Easement on a 132 acre tract of land at the Headwaters of the St. Marks. This parcel is a Priority 1 parcel within the St. Marks Basin. In addition, on Nov.r 30, 2005 Blueprint assigned this easement to the Northwest Florida Water Management District for their future management. Blueprint received a reimbursement for half of the cost of this easement.

3. Blueprint has recently begun discussions with the owner of the Patty Sink concerning that tact as well as other contiguous parcels for possible purchase of conservation easements as part of preservation of the Headwaters of the St. Marks.

