

Reporting Period January 8, 2008 to February 11, 2008

TABLE OF CONTENTS

I. Monthly Progress Reports

	<u>Page</u>
GEC – General Engineering Consultant	1
GEC – Public Involvement	5
N1 - Capital Circle NW – I-10 to US 90	6
N2 - Capital Circle NW/SW – SR 371 (Orange Avenue) to US 90	12
W1 - Capital Circle SW – Crawfordville Road to SR 20	18
E3 - Capital Circle SE – Woodville Highway to Crawfordville Road	23
E2 - Capital Circle SE – Woodville Highway to Tram Road	24
E1 - Capital Circle SE – Tram Road to Connie Drive	34
C2 - Capital Cascade Trail –Segment 2 Design.....	43
Mahan Drive/US 90 – Dempsey Mayo Road to I-10 (Tier 2 Blueprint Project).....	47
Acronymn Glossary.....	48

GEC – GENERAL ENGINEERING CONSULTANT

Project Description:

General Engineering Consultant Contract for the Blueprint Intergovernmental Agency. The LPA GROUP INCORPORATED is the Prime Consultant with Jacobs Engineering Group, Incorporated as the major subconsultant. Twelve additional subconsultants, seven of which are MBE firms, make up the LPA/Jacobs Blueprint GEC Management Team.

Key Personnel:

Program Manager: Steve Nichols – THE LPA GROUP INCORPORATED
Design Manager: Jim Shepherd - Jacobs

Contract Cost & Schedule Status – Contract 597

Original Contract Amount:	\$ 12,020,012.00
Fiscal Year Re-Authorization:	\$ 5,211,303.00
Executed Supplemental Agreements:	\$ 0.00
Pending Supplemental Agreements:	\$ 0.00
Current Contract Amount:	\$ 17,231,315.00
Invoiced to Date:	\$ 11,475,293.14
Remaining Contract Amount:	\$ 5,756,021.86
Percent of Contract Amount Complete:	66.6%

GEC – GENERAL ENGINEERING CONSULTANT

Subconsultant Participation:	Contract Amt	% of GEC Contract	Expended To Date	FY To Date
Moore Bass Consulting <i>Stormwater & Landscaping</i>	\$ 292,177.00	1.70	\$ 176,907.15	\$ 68,498.72
Pope Environmental <i>Environmental Services</i>	\$ 329,276.00	1.91	\$ 138,690.00	\$ 0.00
OLH International <i>Program Controls</i>	\$ 1,699,730.00	9.86	\$ 1,413,677.86	\$ 74,771.52
Beck Consulting Group <i>Government Relations</i>	\$ 65,000.00	0.38	\$ 28,442.44	\$ 1,200.00
Quest Corporation of America <i>Public Involvement</i>	\$ 814,604.00	4.73	\$ 493,315.58	\$ 51,701.04
Uzzell Advertising <i>Public Relations, Web Maint.</i>	\$ 367,405.00	2.13	\$ 341,535.96	\$ 56,322.00
Welch & Ward Architects <i>Architecture, Recreation Facilities</i>	\$ 25,000.00	0.15	\$ 14,945.00	\$ 0.00
THC Right-of-Way Services, Inc. <i>R/W appraisal and acquisition</i>	\$ 3,891,999.00	22.59	\$ 2,032,941.62	\$ 387,352.70
GPI Southeast <i>Survey and mapping</i>	\$ 421,406.00	2.45	\$ 177,009.62	\$ 4,672.08
Weigal - Veasey <i>Property Appraisal</i>	\$ 0.00	0.00	\$ 0.00	\$ 0.00
Williams Earth Sciences <i>Geotechnical Services</i>	\$ 35,000.00	0.20	\$ 4,286.78	\$ 0.00
Allen Nobles & Associates <i>Survey</i>	\$ 0.00	0.00	\$ 73,726.00	\$ 0.00
THE LPA GROUP (PRIME) <i>Prime Consultant</i>	\$ 4,948,472.00	28.72	\$ 3,847,696.47	\$ 497,937.76
JACOBS (PRIME SUB) <i>Prime Subconsultant</i>	\$ 4,341,245.00	25.19	\$ 2,732,118.66	\$ 258,054.60
<hr/>				
Total Contract:	\$ 17,231,314.00	100.01%	\$ 11,475,293.14	\$ 1,400,510.42

MBE Goal:	\$ 2,670,853.67	15.50%
MBE to Date:	\$ 2,607,513.99	22.72%

GEC – GENERAL ENGINEERING CONSULTANT

Activities Since Last Period:

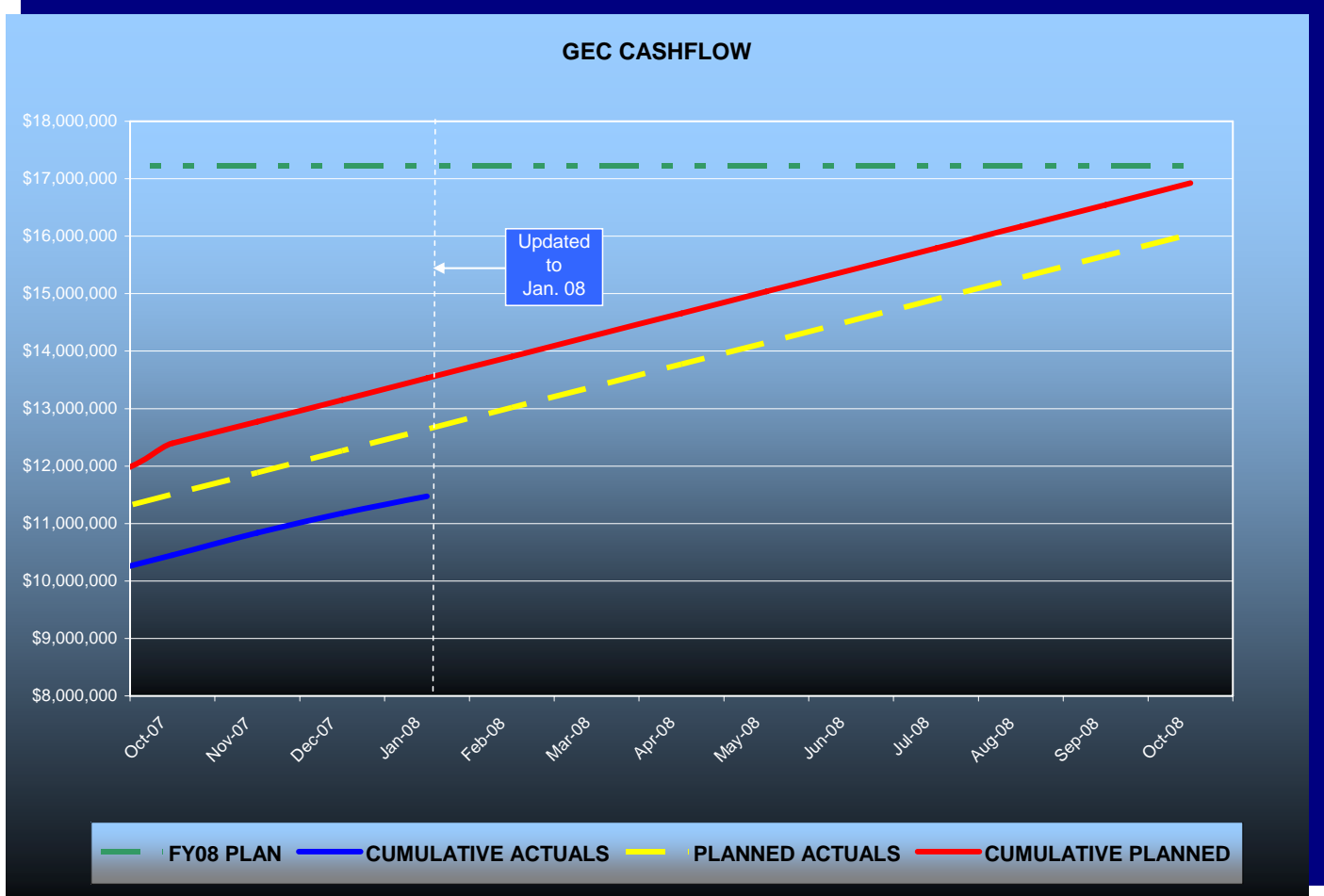
1. Prepared Landscaping IFB for three short-listed Contractors
2. Coordinated Landscaping with COT Permitting and FDOT Maintenance
3. Held TCC and CAC meetings
4. Secured Ray Youmans as Randy Matheny's replacement as Right-of-Way Manager
5. Held District Secretary Coordination Meeting
6. Coordinated snail harvest and experimental testing at Regional Pond 1
7. Coordinated Access Management issues with District Design Engineer
8. Set tentative date for Grand Opening of E1 as April 15, 2008
9. Coordinated contamination efforts at Cascade Park
10. Developed solution for karst features at Pond site on CCSE-E2
11. Selected Kimley-Horn Inc., and started negotiations for CCT-3 and 4
12. Continued maintenance map preparation for CCSE-E1
13. Continued investigation for Construction Delivery Method for CCT-2
14. Interviewed candidates for Program Manager position

Planned Activities for Next Period:

1. Develop Maintenance Responsibility Map for N1 Transfer
2. Await direction on Landscaping regarding County's maintenance budget
3. Provide direction on remaining Cascade Park amenities
4. Continue coordination on Mahan Drive and Orange Avenue projects
5. Continue acquisition activities on CCNW/SW-N2
6. Prepare negotiations for CCT-2 and 3

GEC – GENERAL ENGINEERING CONSULTANT

GEC Contract Financial Summary of Planned Vs. Actual Costs – FISCAL YEAR 2008



GEC – PUBLIC INVOLVEMENT

Activities Since Last Period:

1. Attended CAC Meeting
2. Attended TCC Meeting
3. Continued to Organize Community Representative Meeting for CCSW-W1
4. Continued to update website for CCT-2
5. Attended meeting with Hugh Holborn regarding search database for new website
6. Prepared Presentation for Senior Citizens
7. Prepared Presentation for Cascade Park Amenities for Tallahassee Chamber LEEDS Group
8. Attended meeting on Gaines Street Revitalization
9. Prepared Presentation on Dog Park
10. Attended Contractors Meeting for CCT-2
11. Attended meeting to discuss snail issue for CCNW-N1
12. Organized and held Community Representative Meeting #10 for CCSW-W1

Planned Activities for Next Period:

1. Organize Access Management Public Hearing for CCNW/SW-N2
2. Organize Alternatives Public Meeting for CCSW-W1
3. Organize Ribbon Cutting for CCSE-E1
4. Continue to attend meetings and prepare presentations with Marketing/Fundraising team and project partners
5. Continue working on new website
6. Prepare GEC Performance Report
7. Attend Intergovernmental Agency Meeting
8. Attend Leon County Coordination Meeting with DOT

N1 - CAPITAL CIRCLE NW – I-10 TO US 90

Project Description:

This 1.991-mile roadway project (FPID: 219722-1-52-01 & 02) consists of upgrading the existing undivided rural facility to a six-lane divided urban (curb and gutter) facility. Upgrades to the West Tennessee, Tharpe, Hartsfield and Commonwealth intersections are included. The purpose of the roadway improvement project is to increase the capacity and safety of the existing highway. The roadway project was designed, let and constructed by the Florida Department of Transportation, with advance funding provided by the Blueprint 2000 Intergovernmental Agency.

Project Personnel:

Blueprint 2000:	Project Manager:	Marcus Kelly
	FDOT Operations Engineer:	Gabriella Corbin
	FDOT Construction:	William Stoutamire
	CEI PA:	Jerry McClure
PBS&J - CEI:	CEI Sr. Project Engineer:	Steve Martin

Contract Cost & Schedule Status - As of 1/8/2008

Contract Commencement:	26Sep05
Contract Completion:	30Dec07
Percent of Work Performed:	100.0%
Original Contract Amount:	\$ 25,462,923.43
Executed Supplemental Agreements:	\$ 36,313.26
Pending Supplemental Agreements:	\$ 0.00
Current Contract Amount:	\$ 25,499,236.69
Invoiced to Date:	\$ 25,143,082.93
Remaining Contract Amount:	\$ 356,153.76
Percent of Contract Amount Complete:	98.6%
Original Contract Time:	825 Days
Contract Time Extensions:	32 Days
Current Contract Time:	857 Days
Contract Time Expended:	834 Days
Contract Time Remaining:	23 Days
Percent Contract Time Expended:	97.3%

N1 - CAPITAL CIRCLE NW – I-10 TO US 90

Schedule Milestones:

Complete 100% Plans	22Dec04
Right-of-Way, Permits and Utilities Clear	06Dec04
Plans to Tallahassee (final processing)	15Mar05
Select CEI Consultant	14Mar05
Letting Date	25Jun05
Begin Construction	15Oct05
Complete 100% Plans	22Dec04
Right-of-Way, Permits and Utilities Clear	06Dec04
Plans to Tallahassee (final processing)	15Mar05
Select CEI Consultant	14Mar05
Letting Date	25Jun05
NTP Issued	14Sep05
Begin Construction	26Sep05
Final Acceptance Date	04Sep07

N1 - CAPITAL CIRCLE NW – I-10 TO US 90

Project Status:

As of January 8th, 2008:

THE PROJECT WAS FINAL-ACCEPTED BY FDOT ON 9-4-2007:

THE FINAL ESTIMATE (#027) was processed on 11/28/07 as follows:

709 of 857 Total Contract Days were used (857 Total Days include 32 Weather Days Granted to date);

Planned Progress = 86.44%

Actual Progress = 100%

Contract Time used = 82.73%

Contract Executed on 8/15/05;

Notice To Proceed on 9/14/05;

Contract Start Date on 9/26/05;

Final Acceptance Date = 9/4/07

Contract Time expiration = 1/30/08(*)

(*) The Contractor completed the project early, and earned an early-finish incentive bonus as allowed by Contract. Based on the FDOT-approved Final Acceptance occurring on 9/4/07, this Bonus Value is 116 Days @ \$3500/Day = \$406,000.00

FINAL FINANCIAL STATUS (AS LISTED ON THE FINAL ESTIMATE DATED 11/28/07:

ESTIMATE 1 of 2 (FDOT WORK):

(a) Original Job Amount =	\$24,172,803.43
(b) Approved S.A.'s =	(-) \$ 366.74
(c) Present Job Amount =	\$24,172,436.69
(d) Regular Work to Date=	\$23,883,170.93
(e) Fuel & Bit. Adjustments =	\$ 822,445.20
Bal. of Present Amount (c-d)=	\$ 289,265.76
(f) Incentive Amount (116 Days @ \$3500/Day) =	\$ 406,000.00
Amount Payable (d+e+f) =	\$25,111,616.13

ESTIMATE 2 of 2 - JPA (COT Utility work):

(a) Original Job Amount =	\$1,290,120.00
(b) Approved S.A.'s =	\$ 36,680.00
(c) Present Job Amount =	\$1,326,800.00
(d) Regular Work to Date =	\$1,259,912.00
(e) Fuel & Bit. Adjustments =	\$ 0.00

Final JPA Amount Payable (d+e) = \$1,259,912.00

TOTAL CONTRACT SUMMARY (Estimates 1 and 2):

Original Contract Amount =	\$25,462,923.43
Approved SA's =	\$ 36,313.26
Present Contract Amount =	\$25,499,236.69
Regular Work to Date =	\$25,143,082.93
Balance of Present Amount:	\$ 356,153.76

N1 - CAPITAL CIRCLE NW – I-10 TO US 90

Activities Since Last Period:

1. All Items have been satisfactorily completed and FDOT has Final Accepted the project effective 9-4-07
2. FDOT submitted the Final Estimate by 11-28-07
3. Blueprint received a copy of the as-built plans from FDOT on 12-3-07

Planned Activities for Next Period:

1. FDOT has submitted the documents required to convey regional stormwater facility pond #1 over to Leon County, and they are being reviewed
2. Complete the necessary documents required for the FFF Agreement for reimbursement of grant-funds from NFWFMD
3. Continue to solicit other agencies for insight & advise on alternate solutions to reduce or eradicate Apple snails from stormwater pond facilities, and this research continues for use with current and future pond design & maintenance implications
4. Coordinate proposal for McGlynn Laboratories of Tallahassee and Van Dyke Environmental Services (FEB-2008) to retrieve snails from Pond #1 with Bright Futures Program students, and provide trial-methods for potential elimination of snails in the future.

Significant Issues and Resolutions:

ISSUE

Review financial status of project for potential over-runs.

RESOLUTION

As of 12/3/07, the Project Final Estimate was produced by FDOT. After adjusting for the Incentive Bonus (\$406K) and Fuel & Bit adjustments (\$822,445.20), the Total Final (construction) Contract Amount stands at \$25,111,616.13. In addition, the JPA for Utility Work (COT) is \$1,259,912. These results in less than the amount included in the Master Plan and authorized by the I.A.

ISSUE

Need to follow up on Florida Forever Funding (FFF) Agreement. This agreement, between Blueprint 2000 and the Northwest Florida Water Management District, provides for grant funding of up to \$732,160 from the NFWFMD in participation of the Regional Stormwater Facility Pond #1 construction. The original time for the agreement has been extended from March 7th, 2007 to April 30th, 2008 to allow for additional time in the gathering and processing of the project close out items. Blueprint 2000 has already met with the NFWFMD representative (PBS&J) at Pond #1 to review the post-construction condition of the pond as part of the deliverable submission package. Blueprint 2000 cannot submit the FFF package until the drainage design for N2 has been completed. The treatment volumes are being confirmed now and should be completed and confirmed in FEB 2008.

RESOLUTION

The FFF Agreement with Blueprint 2000, executed on 9/7/05, stipulates a list of Deliverables (see page 6 of 7 of the FFF Agreement) to be submitted by Blueprint 2000 to the NFWFMD in order to receive the funds. The deadline submission of these deliverables has been extended, as requested by Blueprint 2000, from 3/7/07 to 3/30/08, to enable Blueprint 2000 to prepare the package after the project was completed in September 2007. Blueprint 2000 has prepared this package, with the remaining outstanding item to complete the package being confirmation of the treatment volume required in Pond #1 for the N2 project, which may result in changes to reduce the retrofit % drainage contributions). This is anticipated to be completed in February 2008.

N1 - CAPITAL CIRCLE NW – I-10 TO US 90

ISSUE

Determine options for potential solution to snail issue in Regional Stormwater Pond #1. Soon after completion of Pond #1, exotic Apple snails were observed invading and potentially damaging the aquatic plantings.

RESOLUTION

The Florida Fish & Wildlife Conservation (FWC) Commission initially observed the snails and the resulting problem that could destroy the aquatic plants soon after they were installed. Blueprint 2000, FDOT, the CEI and the contractor(s) reviewed several options for potential corrective actions. A work-order was negotiated between FDOT and the Contractor for the Extra-Work, and the Contractor implemented an initial hand-removal process of the snails during the first week of September 2007, as recommended by the FWC. However, the snails returned since the project was completed and final-accepted by FDOT. Blueprint 2000 is currently pursuing another hand-removal option with a 3rd party. This plan has been approved by the Blueprint 2000 Legal and FDOT staff, and another hand-removal process is tentatively being scheduled to occur in February 2008. Along with the hand-removal, several "trial-methods" are also scheduled to try and determine potential methods to eliminate the snails. These options are currently being reviewed by FDEP and Blueprint 2000, and Blueprint 2000 is keeping FDOT informed.

N1 - CAPITAL CIRCLE NW – I-10 TO US 90

Right-Of-Way Status Report:

CLOSED - (IN POSSESSION)	100
AGREEMENTS SECURED BUT NOT CLOSED	21
DONATION	4
NEGOTIATING/PREPARING FOR SUIT	0
TOTAL PARCELS ON PROJECT	125

As of January 2008 FDOT reported:

Right-of-Way cost expended so far is approximately \$46,131,688
 There are 11 parcels remaining to be settled through mediation;
 The total Right-of-Way cost is estimated to be \$47,831,058.

N2 - CAPITAL CIRCLE NW/SW – SR 371 (ORANGE AVE.) TO US 90

Project Description:

The Expanded Project Development and Environment (PD&E) Study limits for this 2.9 mile project extend from Tennessee Street (US 90/SR 10) to Orange Avenue (SR 371). The purpose of this roadway improvement project is to increase the capacity and safety of the existing highway by expanding the existing two-lane undivided rural roadway to a six-lane divided urban (curb and gutter) facility. New traffic signals will be provided at Orange Avenue, Blountstown Highway and Gum Road Intersections. The project also includes significant landscaping as well as pedestrian, bicycle and recreational amenities. This project will develop final design plans for construction.

Project Personnel:

Blueprint 2000:	Program Manager:	Steve Nichols
	Construction Manager:	Marcus Kelly
	Project Manager:	Latesa Turner
H.W. Lochner:	Project Manager:	Hugh Williams

Contract Cost & Schedule Status - Agreement No. 772/Authorization 1 - As of 2/19/2008

Contract Commencement:	10May04
Contract Completion:	10May07
Percent of Work Performed:	78.0%
Original Contract Amount:	\$ 1,921,585.90
Executed Supplemental Agreements:	\$ 2,985,505.11
Pending Supplemental Agreements:	\$ 0.00
Current Contract Amount:	\$ 4,907,091.01
Invoiced to Date:	\$ 3,848,506.85
Remaining Contract Amount:	\$ 1,058,584.16
Percent of Contract Amount Complete:	78.4%
Original Contract Time:	1095 Days
Contract Time Extensions:	478 Days
Current Contract Time:	1573 Days
Contract Time Expended:	1380 Days
Contract Time Remaining:	193 Days
Percent Contract Time Expended:	87.7%

Schedule Milestones:

Final Environmental Documents	20Jun06
Final Preliminary Engineering Report	20Jun06
Location Design Concept Approval (LDCA)	22Aug06
30% Roadway Plans	28Aug06
VE Complete	27Oct06
2nd Draft Right-of-Way Maps	30Apr07
Final Right-of-Way Maps	30Sep07
60% Roadway Plans	01Nov07
90% Plans	11Feb08
100% Plans	28Apr08
Final Plans	30Jun08

N2 - CAPITAL CIRCLE NW/SW – SR 371 (ORANGE AVE.) TO US 90

Design Subconsultant Participation:	Contract Amt	% of Design Contract	Expended To Date	FY To Date
Environmental Geotechnical Specialists				
<i>Geotechnical</i>	\$ 482,783.31	9.84	\$ 397,099.20	\$ 61,316.10
Diversified Design & Drafting Services, Inc.				
<i>Survey and R/W Mapping</i>	\$ 766,819.64	15.63	\$ 685,921.28	\$ 72,368.50
Archaeological Consultants, Inc.				
<i>Cultural Resource Assessment</i>	\$ 22,179.75	0.45	\$ 19,196.50	\$ 8,249.35
HNTB/TEI				
<i>Traffic Analysis</i>	\$ 90,310.59	1.84	\$ 90,310.59	\$ 0.00
American Acquisition Group				
<i>Right of Way</i>	\$ 97,873.48	1.99	\$ 94,046.22	\$ 0.00
HW LOCHNER (PRIME)				
<i>Prime Consultant</i>	\$ 3,245,874.24	66.15	\$ 2,455,294.06	\$ 723,716.22
PBS&J				
<i>Landscape</i>	\$ 143,815.00	2.93	\$ 84,472.00	\$ 84,472.00
CDM				
<i>Stormwater Modeling</i>	\$ 57,435.00	1.17	\$ 22,167.00	\$ 22,167.00
<hr/>				
Total Design Contract:	\$ 4,907,091.01	100.00%	\$ 3,848,506.85	\$ 972,289.17

Design MBE Goal:	\$ 760,599.11	15.50%
Design MBE to Date:	\$ 1,102,216.98	28.64%

Project Status:

Conducting pond & mitigation analysis and design. Pond and mitigation area surveys continue. Preliminary geotechnical investigations for road design and structures have been completed and are currently under review. Blueprint has completed review of the 60% roadway, signing/markings, signalization, lighting and 60% landscape design plans. Lochner is proceeding with Phase 3 (90%) plans development and environmental permitting of the project. Right-of-Way acquisition process is on-going.

N2 - CAPITAL CIRCLE NW/SW – SR 371 (ORANGE AVE.) TO US 90

Activities Since Last Period:

1. Continued preparation of Right-of-Way map revisions, legal descriptions and sketches for mitigation areas
2. Received Blueprint comments on Phase 2 (60%) Landscape Design Plans
3. City and County reviews of roadway, signalization, signing/markings, lighting, and landscape plans are not yet complete
4. Preparing preliminary Erosion Control Plan
5. Continued coordination with CSX Railroad staff to obtain future track location, to allow bridge design to proceed
6. Continued preparation of the Environmental Impact Assessment (EIA) for submittal to Leon County Growth Management
7. CDM conducting preliminary report on SWMM modeling of Gum Creek
8. Submitted Supplemental Agreement (SA) request for design changes due to Right-of-Way acquisition staff request, 2 new ponds, longer span railroad bridge design, and new mitigation property.

Planned Activities for Next Period:

1. Complete response to DEP on items in wetland permit after incorporation of Hollon property data
2. Complete preparation of and submit revised roadway and pond Right-of-Way documents
3. Submit Phase 2 (60%) Erosion Control Plan
4. Complete preparation of mitigation Right-of-Way documents
5. Complete coordination with CSX Railroad staff on bridge overpass
6. Continue Utility coordination
7. CDM to finalize SWMM modeling of Gum Creek after review comments are received
8. Finalize and submit the Gum Creek Bridge Hydraulics Report and Bridge Development Report
9. Meet with Leon County Growth Management staff to coordinate proposed stormwater management and mitigation options
10. After incorporation of Hollon property data, finalize preparation of the Environmental Impact Assessment (EIA), and submit to Leon County Growth Management
11. Negotiate SA #7

N2 - CAPITAL CIRCLE NW/SW – SR 371 (ORANGE AVE.) TO US 90

Significant Issues and Resolutions:

ISSUE

Erosion control plan, particularly in the Chain of Lakes basin.

RESOLUTION

Preliminary erosion control plan to be submitted in next period.

ISSUE

New floodplain mitigation site on Gum Road.

RESOLUTION

Design is underway.

ISSUE

Renegotiate agreement for the regional stormwater facility on N1 project.

RESOLUTION

Blueprint staff has been working on split between N1 and N2.

ISSUE

Utility companies' desire to have Right-of-Way cleared 6 months prior to letting.

RESOLUTION

Coordination with utility companies is ongoing.

ISSUE

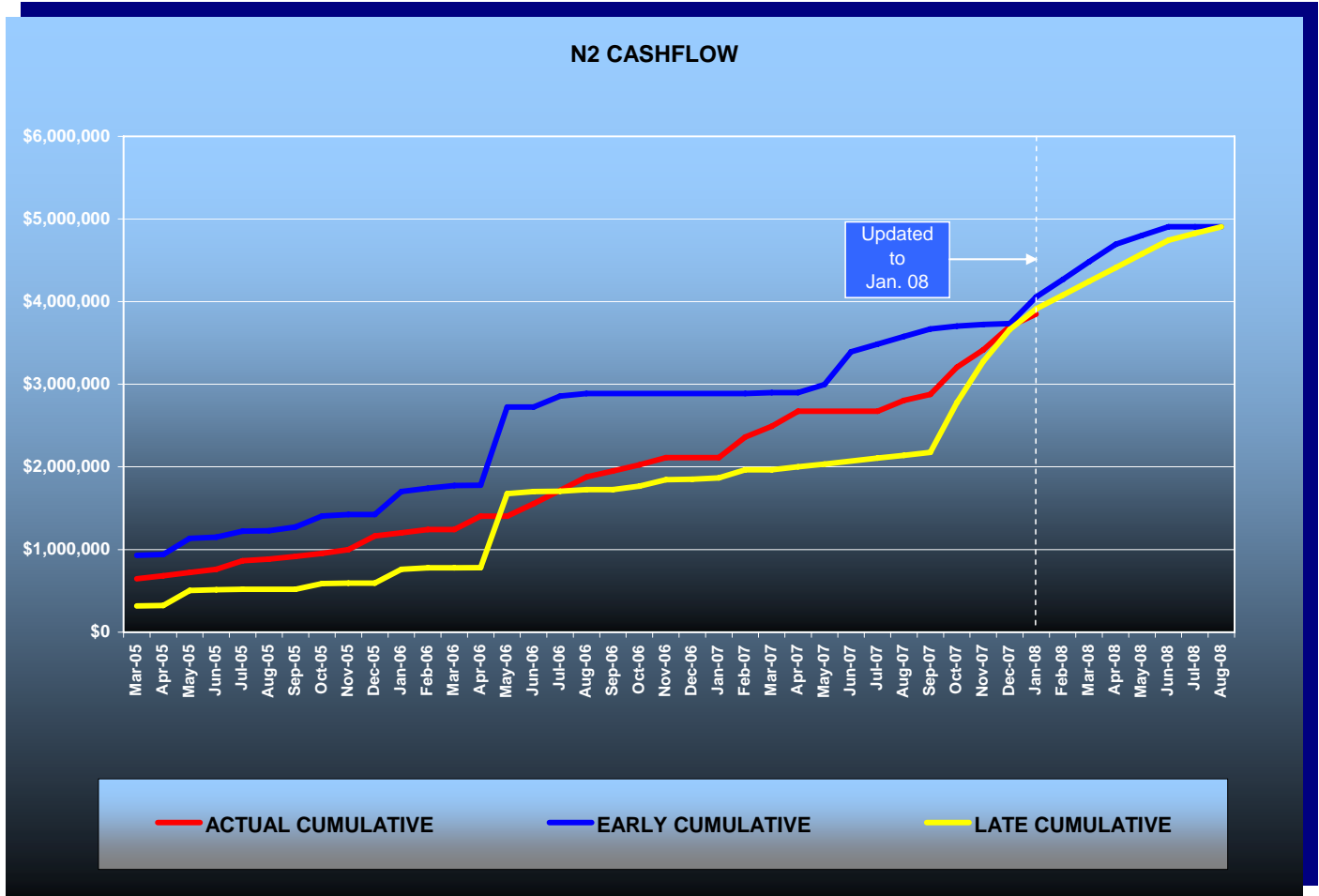
Need CSX Railroad approval of bridge concept.

RESOLUTION

CSX to provide their written comments, which are now overdue.

N2 - CAPITAL CIRCLE NW/SW – SR 371 (ORANGE AVE.) TO US 90

Contract Financial Summary of Planned Vs. Actual Costs



N2 - CAPITAL CIRCLE NW/SW – SR 371 (ORANGE AVE.) TO US 90

Right-Of-Way Status Report:

CLOSED - (IN POSSESSION)	9
AGREEMENTS SECURED BUT NOT CLOSED	0
DONATION	0
NEGOTIATING/PREPARING FOR SUIT	134
TOTAL PARCELS ON PROJECT	143

Blueprint continues to receive parcel appraisals, and the review appraisals; and offers are being made.

W1 - CAPITAL CIRCLE SW – CRAWFORDVILLE ROAD TO SR 20

Project Description:

A Project Development and Environmental (PD&E) Study will be conducted for that portion of Capital Circle (SR 263) between Crawfordville Road (SR 61 US 319) and Blountstown Highway (SR 20) a distance of approximately 6.7 miles. The PD&E study will be conducted in accordance with Federal Highway Administration (FHWA), Blueprint 2000 Agency, and Florida Department of Transportation (FDOT) guidelines. The study will evaluate alternative alignments as well as the existing alignment. Several viable alternatives will be developed and evaluated in order to address the project needs while taking into account the Blueprint 2000 & Beyond “Project Definitions Report”, prepared by the Economic and Environmental Consensus Committee in 1999, and the Lake Bradford Sector Plan, conducted by the Tallahassee/Leon County Planning Department.

Project Personnel:

Blueprint 2000:	Planning Manager:	Dave Bright
	Project Manager:	Latesa Turner
Kimley-Horn & Assoc.:	Project Manager:	Raymond Ashe

Contract Cost & Schedule Status - Agreement No. 1284/Authorization 1 - As of 2/19/2008

Contract Commencement:	22Aug06
Contract Completion:	22Aug09
Percent of Work Performed:	54.0%
Original Contract Amount:	\$ 2,672,271.68
Executed Supplemental Agreements:	\$ 27,108.76
Pending Supplemental Agreements:	\$ 0.00
Current Contract Amount:	\$ 2,699,380.44
Invoiced to Date:	\$ 1,370,560.46
Remaining Contract Amount:	\$ 1,328,819.98
Percent of Contract Amount Complete:	50.8%
Original Contract Time:	1096 Days
Contract Time Extensions:	0 Days
Current Contract Time:	1096 Days
Contract Time Expended:	546 Days
Contract Time Remaining:	550 Days
Percent Contract Time Expended:	49.8%

Schedule Milestones:

Consultant Selected	26May06
Study Begins	22Aug06
Agency Kick-off Meeting	19Oct06
Public Kick-off Meeting	19Oct06
Community Mini-Charrettes	15Jan07
Community Meeting	12Apr07
Corridor/Concepts Charrette	10May07
Interim Public Meeting	06Nov07
Alternatives Public Information Meeting	07Apr08
Preferred Alternative Public Meeting	10Dec08
Public Hearing	01Jun09

W1 - CAPITAL CIRCLE SW – CRAWFORDVILLE ROAD TO SR 20

Design Subconsultant Participation:	Contract Amt	% of Design Contract	Expended To Date	FY To Date
Target Copy and Sign Printers				
<i>Printing</i>	\$ 30,000.00	1.11	\$ 23,414.58	\$ 2,872.40
Keystone Field Services				
<i>Relocation</i>	\$ 35,000.00	1.30	\$ 0.00	\$ 0.00
Environmental and Geotechnical Specialists				
<i>Geotech</i>	\$ 127,874.94	4.74	\$ 34,351.94	\$ 0.00
Diversified Design & Drafting Services				
<i>Survey</i>	\$ 59,830.00	2.22	\$ 0.00	\$ 0.00
StategyWise, LLC				
<i>Economic Development</i>	\$ 19,500.00	0.72	\$ 0.00	\$ 0.00
Hamilton Smith Assoc.				
<i>Traffic</i>	\$ 18,600.00	0.69	\$ 18,600.00	\$ 0.00
Registe, Sliger Engineering				
<i>Structures</i>	\$ 123,376.71	4.57	\$ 27,266.25	\$ 0.00
KIMLEY-HORN & ASSOC (PRIME)				
<i>Prime</i>	\$ 1,612,223.40	59.73	\$ 897,985.96	\$ 146,627.42
Dr. Wayson				
<i>Noise</i>	\$ 30,147.25	1.12	\$ 0.00	\$ 0.00
Hass Center				
<i>Economic Development</i>	\$ 37,200.00	1.38	\$ 0.00	\$ 0.00
Florida Acquisition & Appraisal				
<i>Appraisal/Acquisition</i>	\$ 235,804.91	8.74	\$ 165,371.69	\$ 23,346.60
Biological Research Assoc.				
<i>Water Quality</i>	\$ 117,315.50	4.35	\$ 60,618.03	\$ 5,412.85
Search, Inc				
<i>Cultural Resource/Archaeological</i>	\$ 53,826.73	1.99	\$ 0.00	\$ 0.00
Camp, Dresser & McKee				
<i>Drainage & Pond Design</i>	\$ 198,681.00	7.36	\$ 142,952.01	\$ 16,777.99
<hr/>				
Total Design Contract:	\$ 2,699,380.44	100.02%	\$ 1,370,560.46	\$ 195,037.26

Design MBE Goal:	\$ 418,403.97	15.50%
Design MBE to Date:	\$ 103,632.77	7.56%

W1 - CAPITAL CIRCLE SW – CRAWFORDVILLE ROAD TO SR 20

Project Status:

Kimley-Horn and Associates began the Capital Circle Southwest PD&E study in late August, 2006.

The Public and Agency Kickoff Meetings were conducted in October, 2006.

Six (6) Community Forum Meetings were conducted concluding with a Town Hall Meeting held in April 2007.

The Concept Charrettes were held on May 10th and 12th, 2007.

The Intergovernmental Agency approved the evaluation criteria and the criteria weighting that will be used to evaluate the alternative alignments.

An Interim Public Meeting was held on November 6, 2007 to present the status of the project since the Concepts Charrette.

Ten (10) Community Representatives meetings have been held through the month of January 2008.

The project has begun the analysis phase using the alternatives alignments established through the Concept Charrette process.

W1 - CAPITAL CIRCLE SW – CRAWFORDVILLE ROAD TO SR 20

Activities Since Last Period:

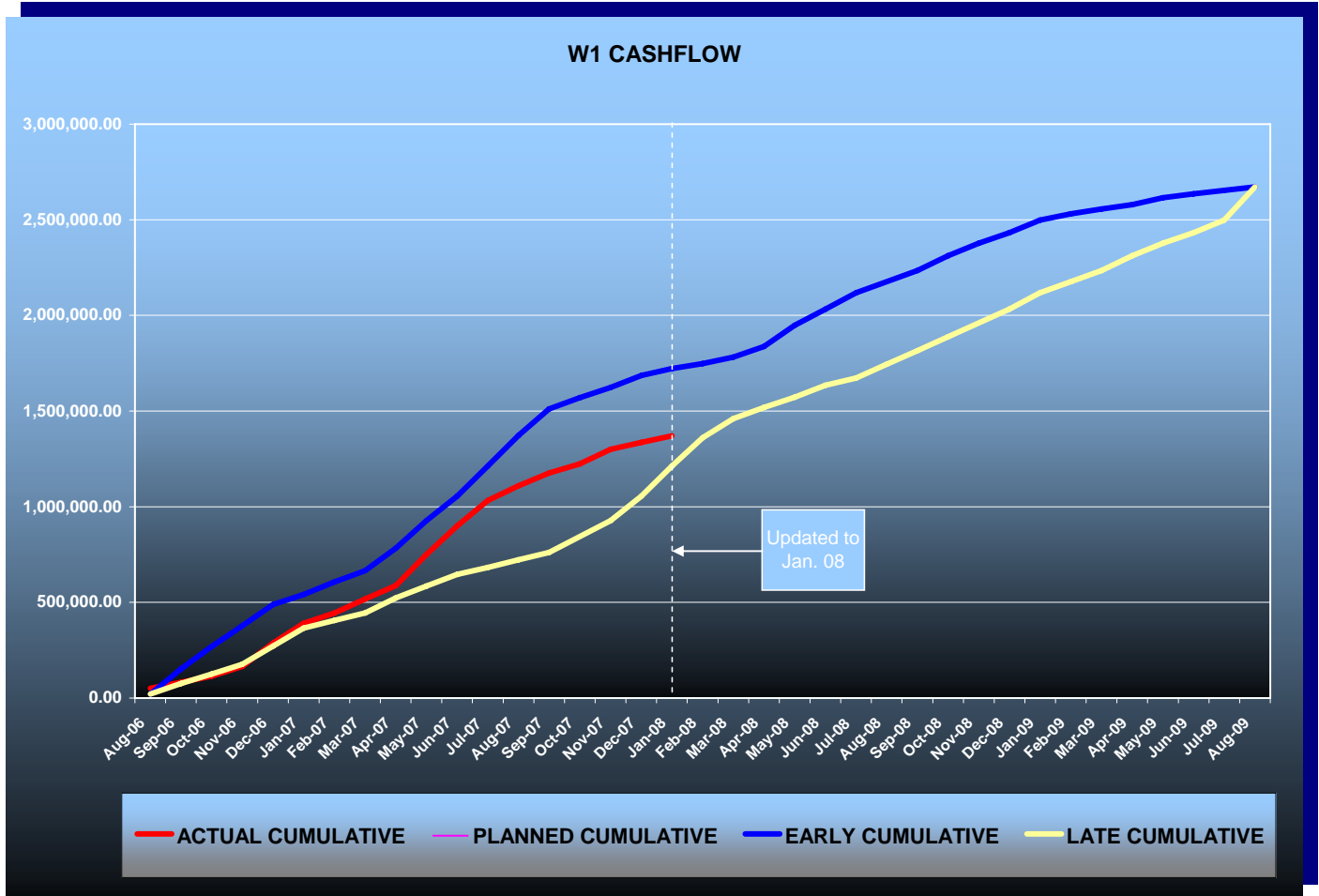
1. Attended Community Representative Meeting #10
2. Met with FDOT District 3 on ETDM review
3. Reviewed initial ETDM screening comments
4. Developed revised project description and purpose and need statements for ETDM re-screening
5. Continued development of stormwater management areas
6. Completed soil borings for stormwater pond sites
7. Continued development of Alternatives
8. Defined alternative segments, limits and alignments
9. Coordinated Right-of-Way cost estimate
10. Finalized draft Endangered Species Report
11. Revised Contamination Screening Evaluation to reflect initial ETDM comments
12. Met with Tallahassee Airport officials
13. Identified unmarked cemetery site

Planned Activities for Next Period:

1. Coordinate ETDM publishing and re-screening
2. Prepare and coordinate Advance Notification submittal
3. Continue preparation for FHWA class of action meeting
4. Continue preparation for Alternatives Public Meeting
5. Prepare access information for Airport
6. Complete soil analysis for pond sites
7. Determine pond sizes
8. Continue refining alternatives
9. Continue preparation of alternatives analysis comparison matrix
10. Revise Corridor Alternatives Report
11. Revise Typical Section
12. Begin preparation of 1st draft Project Development Summary Report
13. Develop alternative construction costs
14. Submit draft Endangered Species Biological Assessment Report
15. Submit Contamination Screening Evaluation
16. Revise Wetland Evaluation Report
17. Survey monitoring well and structure elevations for water restoration plan development
18. Complete identification of cemetery location and establish buffer area for avoidance
19. Develop cemetery avoidance alignment alternatives

W1 - CAPITAL CIRCLE SW – CRAWFORDVILLE ROAD TO SR 20

Contract Financial Summary of Planned Vs. Actual Costs



E3 - CAPITAL CIRCLE SE – WOODVILLE HWY TO CRAWFORDVILLE RD

Project Description:

This project proposes to widen approximately 1.53 miles of the existing two-lane Capital Circle SE from Woodville Highway to Crawfordville Road to an ultimate multi-lane urban facility.

FDOT Roadway ID: 55002000 SR 263 from MP 0.200 to MP 1.730

Project Personnel:

Blueprint 2000:	Engineering Manager:	Jim Shepherd
	Project Manager:	Gary Phillips
URS Corporation:	Project Manager:	Chris Lovett

Project Status:

Contract and Letter of Authorization was executed on February 2, 2006

URS completed Part A of their contract – the preparation of 60% design plans – at a cost of \$996,151,54. The project has been stopped at 60% design. Blueprint is seeking construction funds (TRIP Funding) to initiate a Design-Build contract.

Right-Of-Way Status Report:

Right-of-Way maps are at 100%. We are in the position to begin acquiring Right-of-Way as funding becomes available.

The USFS submitted Stipulations for Capital Circle Southeast for FDOT and Blueprint 2000 review. Once the Stipulations are approved, the easement request will continue to be processed with anticipated completion by end February 2008.

MBE Participation = 16.0%

E2 - CAPITAL CIRCLE SE – WOODVILLE HIGHWAY TO TRAM ROAD

Project Description:

This project proposes to widen approximately 2.3 miles of the existing two-lane Capital Circle SE from Woodville Highway to Tram Road to an ultimate six-lane facility, mileposts 0.0 to 2.12. In addition, a transitional segment west of Woodville Highway (SR 263 MP 0.0 to approximately MP 0.2). The purpose of the roadway improvement project is to increase the capacity and safety of the existing highway. New traffic signal will be installed at access to Lakes St. Marcos development on Woodville Highway, south of CCSE. Provisions for future traffic signals will be provided at three intersections: Paul Russell Road and two unnamed access roads to proposed developments on the north side of CCSE, between Woodville Highway and Tram Road. The project includes significant landscaping as well as pedestrian, bicycle and recreational amenities.

Project Personnel:

Blueprint 2000:	Program Manager:	Steven Nichols
	Project Manager:	Marek Romanowski
	Construction Manager:	Marcus Kelly
Sandco Inc./Genesis:	Project Manager:	Bob Myrick
	Design PM:	Dave Snyder

Contract Cost & Schedule Status - Agreement No. 1464 - As of 2/12/2008

Contract Commencement:	28Aug07
Contract Completion:	13Feb10
Percent of Work Performed:	10.4%
Original Contract Amount:	\$ 17,616,609.90
Executed Supplemental Agreements:	\$ 0.00
Pending Supplemental Agreements:	\$ 0.00
Current Contract Amount:	\$ 17,616,609.90
Invoiced to Date:	\$ 1,835,800.35
Remaining Contract Amount:	\$ 15,780,809.55
Percent of Contract Amount Complete:	10.4%
Original Contract Time:	900 Days
Contract Time Extensions:	0 Days
Current Contract Time:	900 Days
Contract Time Expended:	168 Days
Contract Time Remaining:	732 Days
Percent Contract Time Expended:	18.7%

Schedule Milestones:

Contract with DB Team executed	05Jun07
Notice To Proceed	28Aug07
Ground Breaking Ceremony	29Aug07
Project Final Completion Date	13Feb10

E2 - CAPITAL CIRCLE SE – WOODVILLE HIGHWAY TO TRAM ROAD

Design Subconsultant Participation:	Contract Amt	% of Design Contract	Expended To Date	FY To Date
EGS				
<i>Environmental Engineering</i>	\$ 132,655.00	10.99	\$ 54,970.70	\$ 54,970.70
Mehta & Associates, Inc.				
<i>Design Survey</i>	\$ 44,000.00	3.64	\$ 24,376.00	\$ 24,376.00
Genesis Group				
<i>Prime Consultant of Design Team</i>	\$ 1,030,702.00	85.37	\$ 767,519.50	\$ 767,519.50
<hr/>				
Total Design Contract:	\$ 1,207,357.00	100.00%	\$ 846,866.20	\$ 846,866.20

Design MBE Goal:	\$ 187,140.34	15.50%
Design MBE to Date:	\$ 79,346.70	9.37%

Construction Subconsultant Participation:	Contract Amt	% of Design Contract	Expended To Date	FY To Date
Florida Developers				
<i>Earthwork, Trucking, Drainage</i>	\$ 1,056,996.50	6.44	\$ 49,746.60	\$ 49,746.60
Gains & Sons				
<i>Striping</i>	\$ 123,316.27	0.75	\$ 0.00	\$ 0.00
Hawthorn Construction				
<i>Curb & Gutter, Concrete Work</i>	\$ 880,830.50	5.37	\$ 0.00	\$ 0.00
Ingram Signalization Inc.				
<i>Signalization</i>	\$ 616,581.50	3.76	\$ 0.00	\$ 0.00
Tallahassee Contractors				
<i>Trucking, Limerock Base</i>	\$ 1,056,996.50	6.44	\$ 19,360.01	\$ 19,360.01
Sandco, Inc				
<i>Prime Contractor of DB Team</i>	\$ 12,674,531.63	77.24	\$ 919,827.54	\$ 919,827.54
<hr/>				
Total Construction Contract:	\$ 16,409,252.90	100.00%	\$ 988,934.15	\$ 988,934.15

Construction MBE Goal:	\$ 3,445,943.11	21.00%
Construction MBE to Date:	\$ 69,106.61	6.99%

E2 - CAPITAL CIRCLE SE – WOODVILLE HIGHWAY TO TRAM ROAD

Project Status:

The Design-Build Contract was fully executed on 6/05/07. Utility kick-off meeting was held on 6/27/07. The Pre-construction Conference and the Public Meeting were held on 7/24/07. Joint Project Agreement (JPA) was entered into by St. Joe Company, City of Tallahassee and Blueprint 2000 on 7/31/07. Per terms of this JPA, easements for five drainage ponds and Right-of-Way donated to the project by St. Joe have been obtained from St. Joe. Notice to Proceed was issued to the Design-Build Team on 8/28/07.

The National Features Inventory (NFI) report was approved by the COT Growth Management. The COT GM issued the Environmental Impact Assessment exemption (EIA short form B (low)) for Segments 1 and 3A in October 2007. The Clearing and Grubbing Permit, including "sediment sumps" located at the future stormwater pond sites, and fill stockpiling permit, have also been issued by GM for Segments 1 and 3A. The Stormwater Permit has been received from the Department of Environmental Protection. The EIA for Segment 2 was approved by COT GM on 12/18/07. The Design-Build Team is in the process of preparing the EMP permit application for Segment 1. The subsurface geotechnical investigations of karst features (sinkholes) are in progress on the project.

Utility relocation schedules have been prepared and signed by the Utility Companies. Utility relocation work is in progress since the beginning of February 2008.

Clearing and grubbing on Segments 1 and 3A is complete. Some approved embankment material has been stockpiled on eastbound lanes on Segments 1 and 3A. Excavation of "sedimentation pits" continued at the locations of Ponds 300, 400 and 500.

The Dispute Resolution Board (DRB) meeting was held on 12/19/07.

Activities Since Last Period:

1. Coordinated Right-of-Way acquisition process and access issues with property owners and COT Electric
2. Coordinated with COT Electric Utility regarding relocation of the Transmission line structures in Segment 1
3. Design-Build Team addressed COT comments on 90% complete plans, including landscaping plans
4. Coordinated with FDOT and released the utility relocation schedules/Utility Adjustment Sheets to Utility companies for relocation
5. Coordinated tree removal and electric distribution line placement along the north Right-of-Way line with COT Electric (Segments 1 and 2)
6. Provided supplemental information on karst features (pond # 300) and engineering solutions to COT GM to facilitate EMP permit application review by GM
7. Received Clearing Permit for Segment 2 from COT GM with exception of pond # 600
8. Working towards 100% complete plans

Planned Activities for Next Period:

1. Conduct CEI progress and utility meeting, DRB meeting and design progress meeting
2. Complete resolution of comments on 90% complete landscaping plans provided by Moore Bass
3. Submit modifications to EMP permit application for Segment 1 to GM to reflect engineering solutions for karst features
4. Prepare EMP permit application for Segment 2
5. Complete 100% plans and submit them to Blueprint for review and comments
6. Coordinate CPM schedule and Pay Requisitions with Sandco/Genesis
7. Continue design and QAQC activities on all 3 Segments

Significant Issues and Resolutions:

ISSUE

The COT Engineering Department requested price proposals for a permanently installed irrigation system along the corridor of CCSE from Woodville Highway to Tram Road.

RESOLUTION

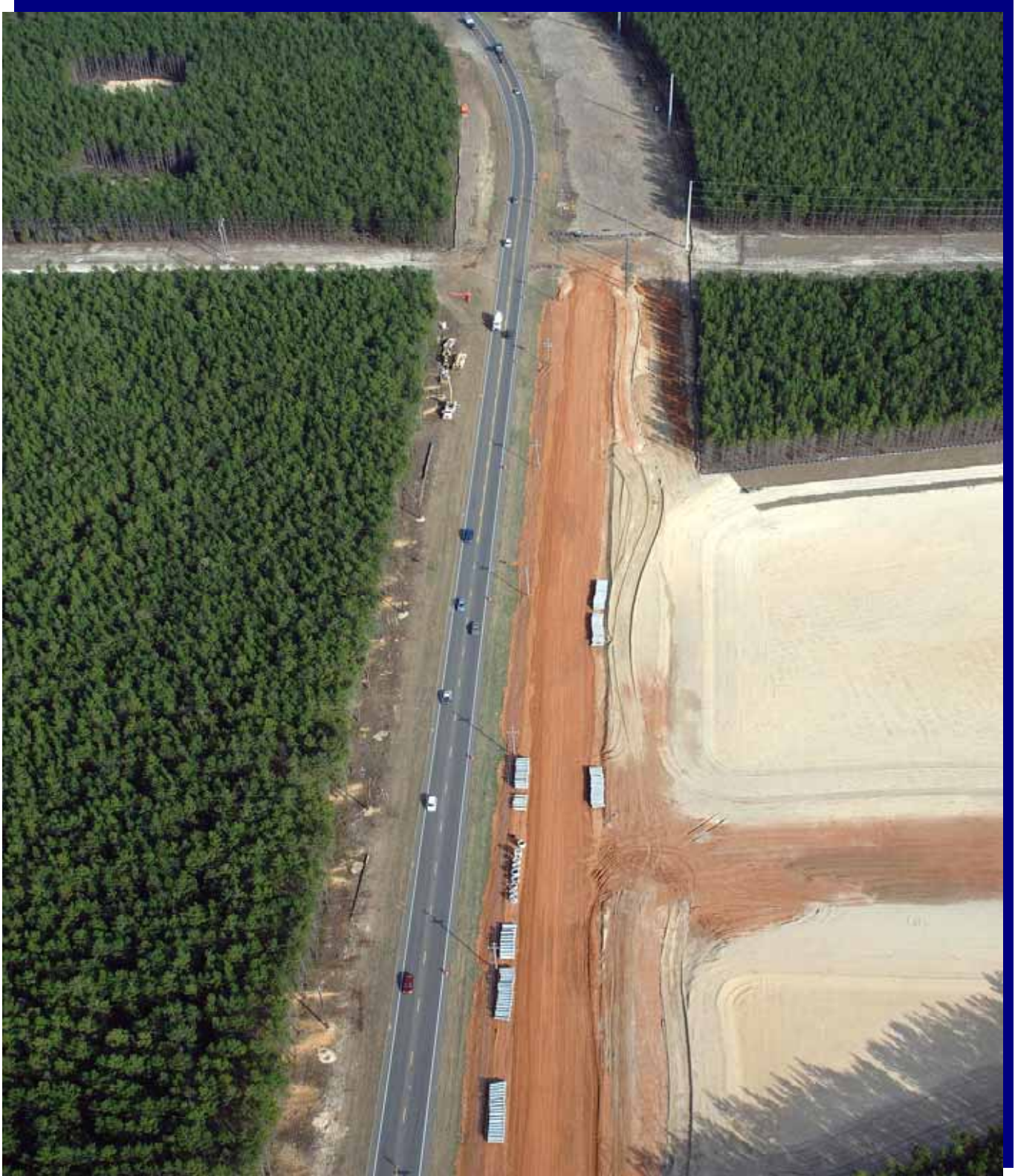
Blueprint 2000 requested, on the City's behalf, a price proposal from Sandco/Genesis. A price proposal has been received. Subsequently Blueprint 2000 has asked for a more detailed price proposal which has been provided by Sandco, and which is currently under review by COT Engineering Department. Blueprint will continue to monitor the Issue and will prepare a supplemental agreement for additional work for irrigation system once the agreement between Sandco and the City has been reached.

E2 - CAPITAL CIRCLE SE – WOODVILLE HIGHWAY TO TRAM ROAD

CCSE Segment 1 – “Sedimentation Sump” at Pond 400 Location



E2 - CAPITAL CIRCLE SE – WOODVILLE HIGHWAY TO TRAM ROAD
CCSE Segment 1 – “Sedimentation Sump” at Pond 500 Location



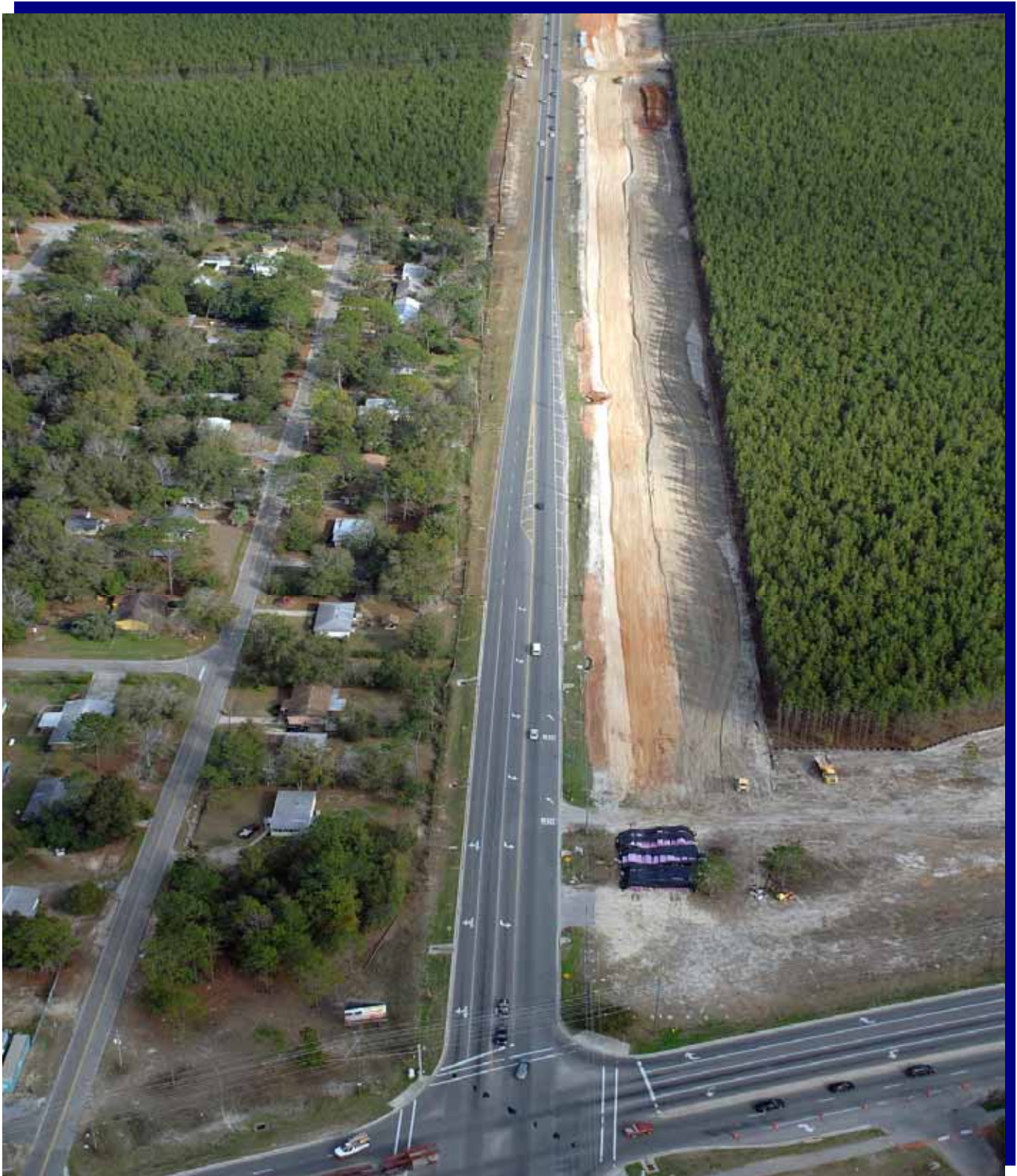
E2 - CAPITAL CIRCLE SE – WOODVILLE HIGHWAY TO TRAM ROAD

CCSE Segment 2 – Parcels 104 and 103



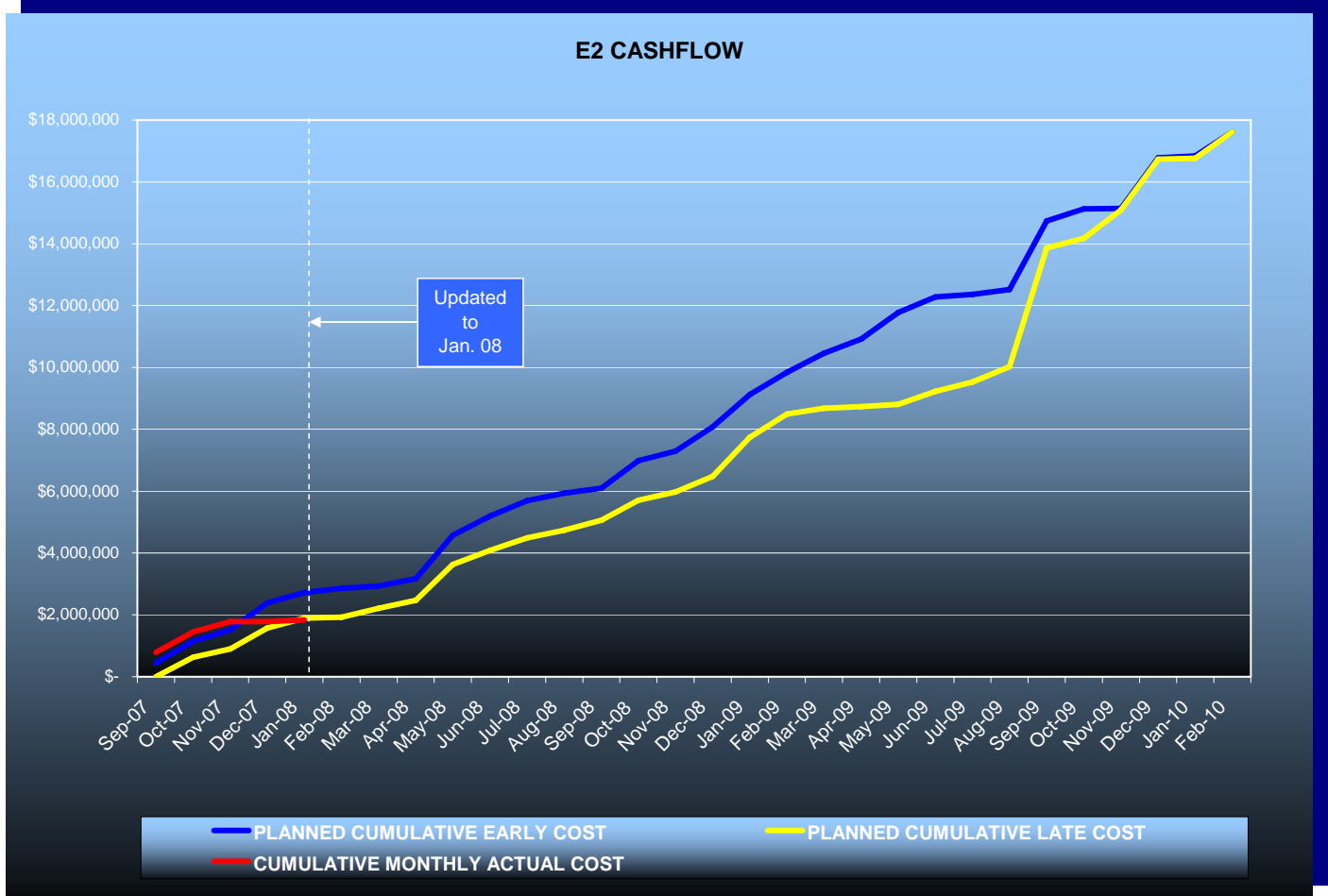
E2 - CAPITAL CIRCLE SE – WOODVILLE HIGHWAY TO TRAM ROAD

CCSE Segment 3A – Clearing in Southeast Corner of Woodville Highway Intersection



E2 - CAPITAL CIRCLE SE – WOODVILLE HIGHWAY TO TRAM ROAD

Contract Financial Summary of Planned Vs. Actual Costs



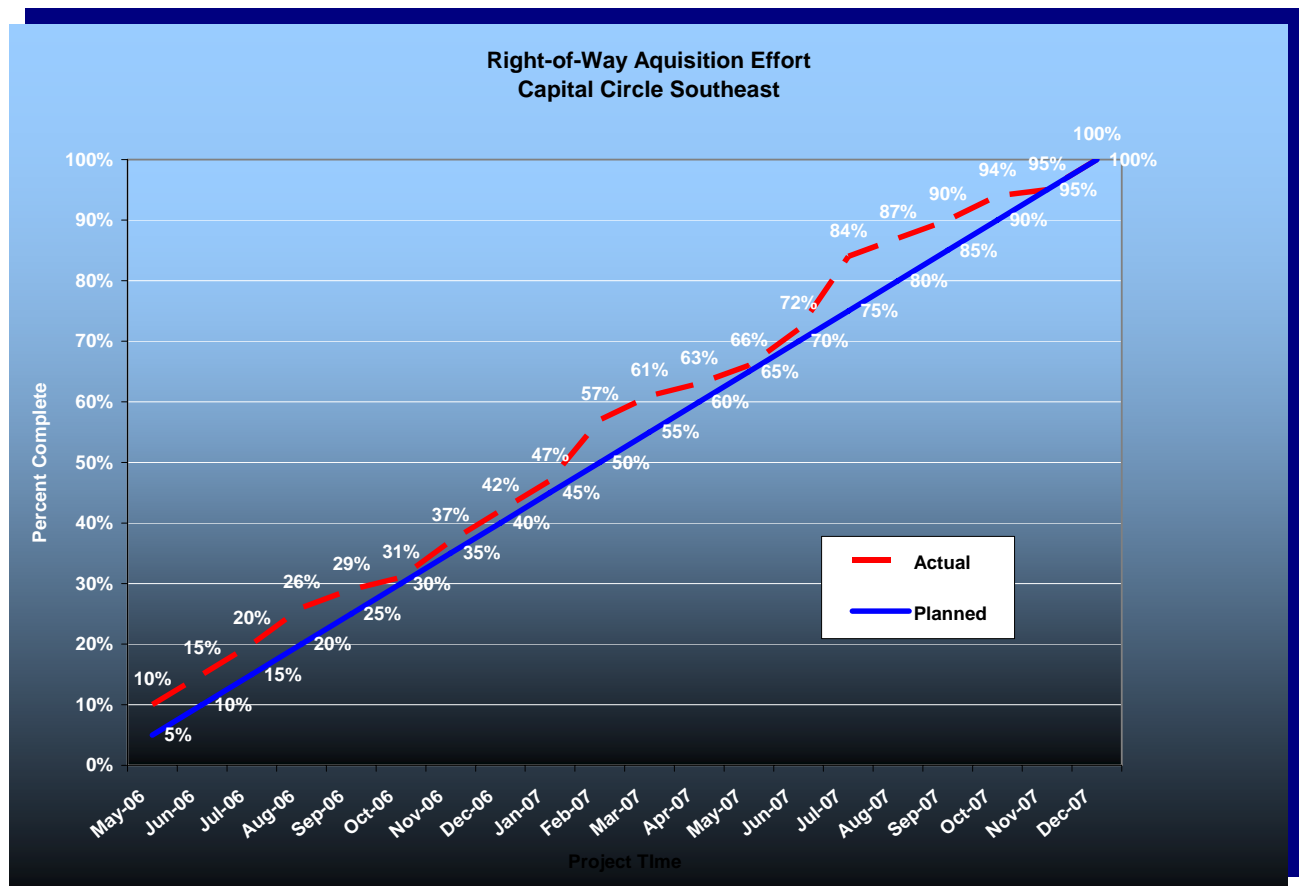
E2 - CAPITAL CIRCLE SE – WOODVILLE HIGHWAY TO TRAM ROAD

Right-Of-Way Status Report:

CLOSED - (IN POSSESSION)	19
AGREEMENTS SECURED BUT NOT CLOSED	0
DONATION	6
TO BE CLOSED	0
TOTAL PARCELS ON PROJECT	25

This project has 25 parcels.

We are in possession of 25 of the 25 parcels needed. We have two parcels which require the relocation of Tenants. This is on going and the relocation should be completed by the end of March 2008.



E1 - CAPITAL CIRCLE SE – TRAM ROAD TO CONNIE DRIVE

Project Description:

The proposed 3.44-mile project along Capital Circle Southeast (US 319/SR261) extends from south of Tram Road to Connie Drive (milepost 1.931 and 5.371) in Leon County and includes expanding the existing two-lane undivided rural roadway to a six-lane divided urban (curb and gutter) facility. The purpose of the roadway improvement project is to increase the capacity and safety of the existing highway. New traffic signals, including ITS features, will be provided at six intersections: Tram Road, Shumard Oak Boulevard, Merchants Row Drive, Blair Stone Road, Orange Avenue and Old St. Augustine Road. The project also includes significant landscaping as well as pedestrian, bicycle and recreational amenities.

Project Personnel:

Blueprint 2000:	Program Manager:	Steven Nichols
	Project Manager:	Marek Romanowski
	Construction Manager:	Marcus Kelly
Joint Venture/PBS&J:	Project Director, JV:	William Mayfield
	Project Mgr., PBS&J:	Steve Martin

Contract Cost & Schedule Status - As of 2/12/2008

Contract Commencement:	10Jan05
Contract Completion:	02Oct07
Percent of Work Performed:	89.3%
Original Contract Amount:	\$ 30,796,339.34
Executed Supplemental Agreements:	\$ 6,058,445.70
Pending Supplemental Agreements:	\$ 209,108.97
Current Contract Amount:	\$ 36,854,785.04
Invoiced to Date:	\$ 32,896,484.37
Remaining Contract Amount:	\$ 3,958,300.67
Percent of Contract Amount Complete:	89.3%
Original Contract Time:	995 Days
Contract Time Extensions:	186 Days
Current Contract Time:	1181 Days
Contract Time Expended:	1128 Days
Contract Time Remaining:	53 Days
Percent Contract Time Expended:	95.5%

E1 - CAPITAL CIRCLE SE – TRAM RD TO CONNIE DR

Schedule Milestones:

Intergovernmental Agency (IA) Approval	20Sep04
Execute Contract	22Dec04
Notice to Proceed	10Jan05
Right-of-Way Acquisition, Phase 1	01May05
Right-of-Way Acquisition, Phase 2	01Sep06
60% Design Submission - Segment I	28Feb05
90% Design Submission - Segment II	15Apr05
Final Design Submission - Segment II	25Jul05
90% Design Submission - Segment IV	30Aug05
90% Design Submission - Segment III	05Oct05
90% Design Submission - Segment I	14Feb06
Final Design Submission - Segment IV	24May06
Final Design Submission - Segment III	15Aug06
Final Design Submission - Segment I	17May06
Contract Completion	01May08

Design Subconsultant Participation:	Contract Amt	% of Design Contract	Expended To Date	FY To Date
Diversified Design & Drafting Services, Inc.				
<i>Design survey</i>	\$ 111,758.50	5.54	\$ 77,230.00	\$ 0.00
Allen Nobles & Associates, Inc.				
<i>Tree survey for permit application</i>	\$ 18,000.00	0.89	\$ 18,000.00	\$ 0.00
Environmental & Geotechnical Specialists, Inc.				
<i>Geotechnical design services</i>	\$ 163,985.26	8.13	\$ 163,985.26	\$ 0.00
CMTS Florida, LLC				
<i>Inspection services</i>	\$ 210,000.00	10.41	\$ 122,436.00	\$ 0.00
Registe Sliger Engineering, Inc.				
<i>Structural design</i>	\$ 9,898.58	0.49	\$ 8,017.85	\$ 0.00
PBS&J (Design Lead)				
<i>Design</i>	\$ 1,503,957.66	74.54	\$ 1,498,339.16	\$ 18,155.00
Total Design Contract:	\$ 2,017,600.00	100.00%	\$ 1,888,008.27	\$ 18,155.00

Design MBE Goal:	\$ 312,728.00	15.50%
Design MBE to Date:	\$ 371,669.11	19.69%

E1 - CAPITAL CIRCLE SE – TRAM RD TO CONNIE DR

M.Inc. Contract including COT Water Utility Additional Work

Construction Subconsultant Participation:	Contract Amt	% of Design Contract	Expended To Date	FY To Date
Ganes & Son Striping <i>Striping</i>	\$ 863,382.92	2.48	\$ 794,702.26	\$ 74,129.72
Construction Support Southeast <i>Construction Support</i>	\$ 1,694,000.00	4.86	\$ 1,322,246.83	\$ 19,435.08
All American Ford <i>Vehicles</i>	\$ 223,761.19	0.64	\$ 223,761.19	\$ 0.00
Ingram Signalization <i>Signal Installation</i>	\$ 2,371,960.00	6.81	\$ 1,513,430.14	\$ 611,880.40
Greenways of America <i>Landscaping</i>	\$ 1,400,000.00	4.02	\$ 1,486,019.61	\$ 504,490.26
Hale Contracting <i>Construction Support</i>	\$ 150,000.00	0.43	\$ 219,390.00	\$ 0.00
Florida Developer <i>Construction Support</i>	\$ 175,000.00	0.50	\$ 374,744.00	\$ 0.00
Terry's Trucking <i>Hauling</i>	\$ 1,339,859.08	3.85	\$ 1,339,859.08	\$ 0.00
M Inc. <i>Prime Contractor</i>	\$ 26,619,221.85	76.41	\$ 23,734,322.99	\$ 2,515,134.68
<hr/>				
Total Construction Contract:	\$ 34,837,185.04	100.00%	\$ 31,008,476.10	\$ 3,725,070.14

Construction MBE Goal:	\$ 7,315,808.86	21.00%
Construction MBE to Date:	\$ 7,274,153.11	23.46%

M. Inc. Contract Excluding COT Water Utility Additional Work

Total Construction Contract:
 \$29,548,260.73

Const. Invoiced to Date: \$25,756,987.69
 Const. MBE Invoice to Date: \$7,274,153.11

Construction MBE Goal:	\$ 6,205,134.75	21.00%
Construction MBE to Date:	7,274,153.11	28.26%

E1 - CAPITAL CIRCLE SE – TRAM RD TO CONNIE DR

Project Status:

Erosion Control, clearing and grubbing work and utility relocation are complete on the project. COT permit has been obtained for all four Segments. The EMP conditional permit for Segment 2 was granted on 10/31/05. Segment 2B EMP permit conditions have been satisfied and full permit for Segment 2 went into effect on 4/20/06. Traffic was switched over to northbound lanes of Segments 3 and 4 on 7/11/07. The EMP permit for Segment 3 was issued on 9/08/06 conditional upon permitting of SouthWood drainage ponds WD 90N, WD 90S and WD290. SouthWood obtained the required permit on 11/30/06 and Segment 3 final plans have been released for construction. Excavation of SouthWood ponds near Segment 3 began on 3/05/07 and is near completion. Permit for Segment 4 was obtained on 6/08/06 and final plans for that Segment were released for construction 9/08/06. Pond 11 in Segment 4 is complete. Concrete curb and gutter, basecourse and structural asphalt are complete on northbound and southbound lanes between Tram Road and Connie Drive. Construction of Old St. Augustine Road is complete to the top of structural asphalt and the road has been opened to traffic since June 2007.

Work on placement of COT Water Utility sanitary sewer, waterline, re-use water line, and storm drainage system is mostly complete. Curb and gutter and structural asphalt are complete on Tram Road on both sides of CCSE. Installation of permanent traffic signals at Orange Avenue is in progress. Installation of street lighting poles, underground conduits and pull boxes is in progress.

Landscaping work between Tram Road and Blair Stone Road is substantially complete, and landscaping work between Blair Stone Road and Connie Drive is close to completion. The DRB Meeting was held on January 21, 2008.

Activities Since Last Period:

1. Continued to monitor MOT for road construction on Segments 3 and 4 (Orange Avenue, Monday Road, transition at north end of the project)
2. MOT plans review for switching southbound traffic over to southbound lanes on the whole project
3. Continued Right-of-Way and maintenance transfer activities (to FDOT)
4. Completed installation of traffic signal mast arms at Orange Avenue intersection. Placing of cables is in progress
5. Continued excavation of SouthWood ponds near Segment 3
6. The Design-Build Team started installation of street lighting poles, and continued placement of conduits, cables and pull boxes for street lighting
7. Blueprint and the Design-Build Team conducted a "project 90% completion" walk-through with FDOT, COT and Leon County representatives
8. The Design-Build Team continued landscaping work on Segments 3 and 4

Planned Activities for Next Period:

1. Conduct construction, DRB and CEI progress meetings
2. Blueprint to continue the process of Right-of-Way and maintenance transfer to FDOT
3. Complete construction of Orange Avenue intersection with CCSE
4. Continue excavation of Segment 3 ponds
5. Complete installation of lighting poles and lighting fixtures
6. Continue landscaping work on Segments 3 and 4
7. Activate traffic signals at Orange Avenue intersection and remove existing traffic signals at Monday Road
8. Continue work on deficiency list items

E1 - CAPITAL CIRCLE SE – TRAM RD TO CONNIE DR

Significant Issues and Resolutions:

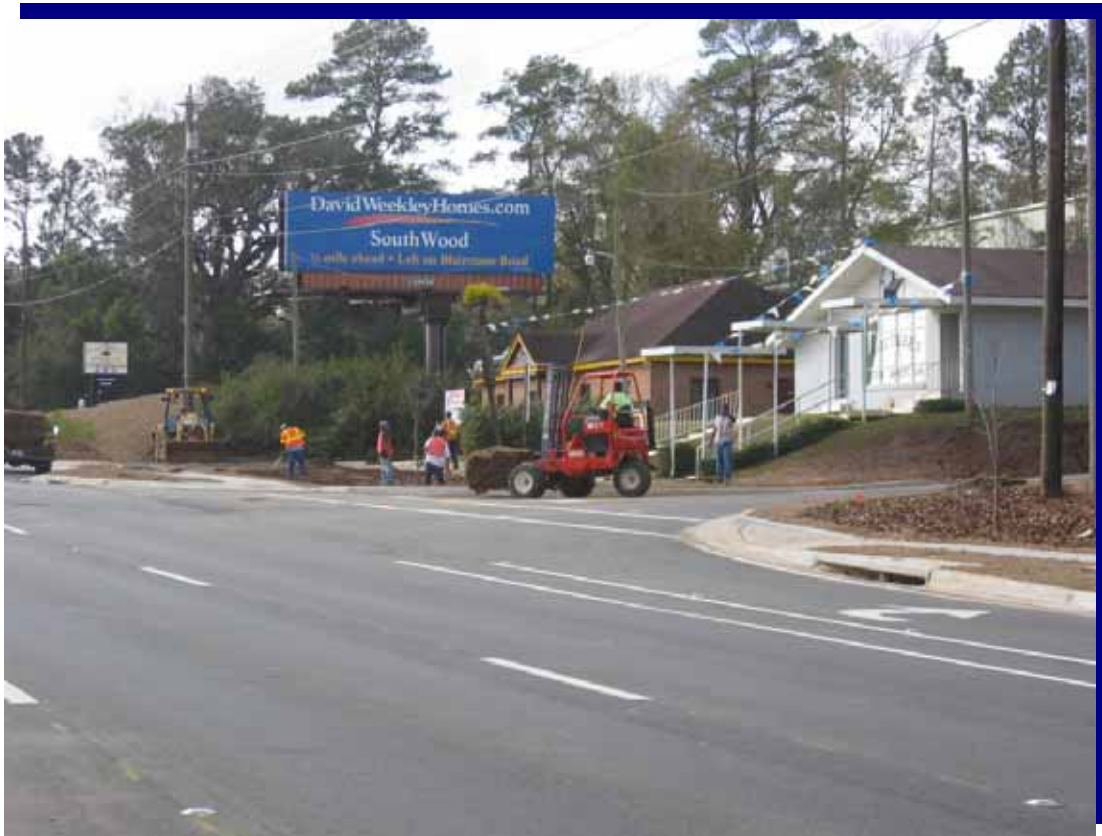
ISSUE

Right-of-Way issue with COT Electric Utility (30' COT Electric Utility/Blueprint Right-of-Way overlap, north of Blair Stone Road to north of Monday Road).

RESOLUTION

COT Electric Utility indicated that Blueprint can obtain the 30' strip of Right-of-Way from COT Electric in fee simple, subject to granting the 30' utility easement to COT Electric on the same strip of Right-of-Way. COT Electric Utility would not be responsible for any transmission line relocations within this easement in the future. Blueprint is in process of preparing legal and survey documents for acquisition of the 30' strip of Right-of-Way and granting an easement to COT Electric.

CCSE Segment 3 – Landscaping Work at Monday Road Intersection



E1 - CAPITAL CIRCLE SE – TRAM RD TO CONNIE DR

CCSE Segment 3 – Grading at SouthWood Ponds



E1 - CAPITAL CIRCLE SE – TRAM RD TO CONNIE DR

CCSE Segment 4 – Construction of Traffic Separator



E1 - CAPITAL CIRCLE SE – TRAM RD TO CONNIE DR

Right-Of-Way Status Report:

CLOSED - (IN POSSESSION)	46*
AGREEMENTS SECURED BUT NOT CLOSED	0
DONATION	14
NEGOTIATING/PREPARING FOR SUIT	0
TOTAL PARCELS ON PROJECT	60

* One parcel was acquired by Order of Taking and still is in suit.

C2 - CAPITAL CASCADE TRAIL –SEGMENT 2 DESIGN

Project Description:

Within the Capital Cascade Trail, Segment 2 is from Lafayette Street to South Monroe Street.

Project Personnel:

Blueprint 2000:	David Bright:	Planning Manager
	Gary Phillips:	Project Manager
Genesis:	Mark Llewellyn:	Project Manager

Contract Cost & Schedule Status - Agreement No. 533/Authorization LOA - As of 2/11/2008

Contract Commencement:	30May06
Contract Completion:	27Nov08
Percent of Work Performed:	70.0%

Original Contract Amount:	\$	2,399,652.27
Executed Supplemental Agreements:	\$	1,105,479.33
Pending Supplemental Agreements:	\$	0.00
Current Contract Amount:	\$	3,505,131.60
Invoiced to Date:	\$	2,567,500.75
Remaining Contract Amount:	\$	937,630.85
Percent of Contract Amount Complete:		73.2%

Original Contract Time:	519 Days
Contract Time Extensions:	243 Days
Current Contract Time:	762 Days
Contract Time Expended:	622 Days
Contract Time Remaining:	140 Days
Percent Contract Time Expended:	81.6%

Schedule Milestones:

Letter of Authorization	30May06
Submit Design Project Schedule	15Jun06
Workshop #1: Program Formation	27Jul06
Workshop #2: Design Selection	14Sep06
Plan Submittal - 50%	19Oct07
Plan Submittal - 90%	24Jun08
All deliverables completed	27Nov08

C2 - CAPITAL CASCADE TRAIL – SEGMENT 2 DESIGN

Design Subconsultant Participation:	Contract Amt	% of Design Contract	Expended To Date	FY To Date
Archaeological Consultants Inc. <i>Archaeological Services</i>	\$ 33,910.84	0.97	\$ 32,068.67	\$ 2,103.25
Environmental and Geotechnical Specialist <i>Geotechnical</i>	\$ 283,204.89	8.08	\$ 221,656.81	\$ 26,585.63
Akin Associates Architects <i>Architectural</i>	\$ 165,153.38	4.71	\$ 13,793.29	\$ 5,320.00
Moore Bass <i>Land Planning</i>	\$ 4,659.91	0.13	\$ 4,456.16	\$ 0.00
Uzzell Advertising <i>Public Relations</i>	\$ 15,562.61	0.44	\$ 14,062.61	\$ 0.00
Carr, Lynch, Sandell <i>Park Design</i>	\$ 559,705.00	15.97	\$ 318,739.40	\$ 70,719.12
Jennings Environmental <i>Environmental</i>	\$ 34,800.00	0.99	\$ 17,341.83	\$ 0.00
Pinnacle Engineering Group <i>MEP</i>	\$ 118,367.72	3.38	\$ 66,771.41	\$ 50,426.00
CDM <i>Stormwater</i>	\$ 155,114.00	4.43	\$ 110,904.15	\$ 16,418.23
Genesis Group <i>Prime</i>	\$ 2,015,172.01	57.49	\$ 1,696,099.83	\$ 398,371.12
PBS&J <i>Water Quality</i>	\$ 32,478.00	0.93	\$ 0.00	\$ 0.00
Garcia Bridge Engineers <i>Bridge Design</i>	\$ 87,003.24	2.48	\$ 71,606.59	\$ 67,380.37
<hr/>				
Total Design Contract:	\$ 3,505,131.60	100.00%	\$ 2,567,500.75	\$ 637,323.72

Design MBE Goal:	\$ 543,295.40	15.50%
Design MBE to Date:	\$ 357,644.13	18.90%

****Please Note: Carr, Lynch and Sandell's contract amount is not contained in the MBE calculation.**

C2 - CAPITAL CASCADE TRAIL – SEGMENT 2 DESIGN

Project Status:

Letter of Authorization #5 and #6 were executed on March 9 and May 30, 2006, respectively. The two LOAs have been combined under Segment 2 Design and Permitting task for a total cost of \$2,399,652.27. Supplemental Agreement #1 was executed on September 18, 2007 for a total of \$1,105,479.33. The new total contract amount is \$3,505,131.60

Activities Since Last Period:

1. BP submitted comments on Alum Injection Study and Pond Augmentation Report
2. Bridge Trestle improvement plans were submitted to CSX for review and approval
3. Lafayette Street drainage improvements will be contracted directly between Leon County and Genesis
4. CDM scheduled to complete third model enhancement and calibration effort by March 14, 2008
5. Conducting second round of reviews for Site Plan Application and EIA with COT Growth Management
6. Presented Dog Park Waste Analysis to E&ER Target committee
7. Provided revised schedule based on model calibration and LOMR/CLOMR submittal
8. COT Water and Sewer review comments on Utility Concept Plan Pending
9. FDEP Lease Agreement was signed by Chairman DePuy and sent to FDEP for final execution
10. Provided review comments of geotechnical reports
11. Met with COT Remediation Project Manager to discuss status and location of temporary and permanent monitoring devices
12. Conducted meetings/PowerPoint presentations with Marketing/Fundraising team and project partners
13. Submitted Cascade Lane design plans to avoid engineering barriers near Incinerator Building
14. COT Parks and Recreation provided review comments on Landscaping and Amenity Design Plans
15. Technical Specifications and Amenity Cost Estimates have been completed
16. FEMA LOMR is scheduled to be submitted in June 2008
17. Comments received from DHR on historic wall along Monroe and Bloxham

C2 - CAPITAL CASCADE TRAIL – SEGMENT 2 DESIGN

Planned Activities for Next Period:

1. Continue to conduct numerous meetings/PowerPoint presentations with Marketing/Fundraising team and project partners
2. Complete Letter of Agreement with COT Water and Sewer
3. Review Gas and Electric Relocation plans for potential cost saving measures
4. Conduct meeting with COT Remediation to discuss impacts to engineering barriers
5. Select preferred design for amphitheater shade structure (selection will be made from three designs that have been developed)
6. Evaluate double by-pass culvert option and size once re-calibrated model has been approved by Blueprint
7. Evaluate "safe" capacity of SAB and non-damaging flow rate through by-pass and double by-pass once model has been approved by Blueprint
8. Follow-up with UAOs on requested completion of Utility Work Schedule and review comments
9. COT Stormwater to organize meeting to discuss FEMA LOMR/CLOMR schedule
10. Conduct meeting to discuss Alum Injection Report
11. Conduct meeting with Wilderness Graphics and Design Team
12. Conduct meeting with Bridge design firm and Design Team
13. Conduct meeting with COT Parks and Recreation to discuss Dog Park design concept

Significant Issues and Resolutions:

ISSUE

LOMR/CLOMR Schedule

RESOLUTION

A meeting with COT will be organized by John Buss to discuss the LOMR/CLOMR schedule and the possibility of issuing the EMP for construction before the CLOMR is approved by FEMA.

ISSUE

Contamination in Lower and Middle Park Sections

RESOLUTION

Blueprint has sent correspondence and scheduled meetings with City Staff in an attempt to insert itself in the contamination/remediation process for AOC 2, 3, 4, and 5. Engineering barriers demarcating the location of contaminated areas will be impacted by the park design and need to be addressed during current negotiations with EPA and DEP.

MAHAN DRIVE/US 90 – DEMPSEY MAYO ROAD TO I-10 (TIER 2 BLUEPRINT PROJECT)

Project Description:

This project is the reconstruction of the existing two-lane rural roadway to a four-lane urban roadway with bike lanes and sidewalks. The design is being performed by a consultant under FDOT's direction.

Activities Since Last Period:

1. Survey: Additional survey completed, signed, and sealed for TCE at the Tallahassee RV park and submitted to FDOT (based on email from George Snyder 1/29/08)
2. Utilities: Jim Allen with TBE provided Vvh locations
3. Misc. Structure Plans: The design for the mast arm and retaining walls is complete
4. Roadway Plans: Phase III (90%) plans were submitted on 10/17/07
5. Drainage Design: Approved FDEP stormwater permit #1 was received on 9/25/07; permit #37-0192523-003-RG. The FDEP stormwater permit #2 was received on 10/25/07; permit #37-0280881-002-RG. Leon County permit submitted on 1/22/08.
6. Environmental: Approved FDEP Dredge and Fill permit received 8/23/07. Approved FDEP stormwater permit received 9/25/07. A second FDEP stormwater permit was received 10/25/07, utilizing the new pond design instead of the GPI Steward Pond. Leon County permit submitted on 1/22/08
7. Lighting Justification Report: The lighting plans to be prepared by COT
8. Signalization Plans: Poole Engineering finalized the work on the signalization plans for the Phase III (90%) submittal
9. Signing and Pavement Marking Plans: Poole Engineering finalized work on signing and pavement marking plans for Phase III (90%) submittal
10. Traffic Study: Queue lengths determined for turn lanes
11. Community Awareness Plan: Public meeting was held at 5:00 PM EST on 04/19/07 at Capital City Christian Church
12. Geotechnical: EGS submitted all required geotechnical reports
13. Bridge Plans: FDOT providing structural plans

Planned Activities for Next Period:

1. Survey: None
2. Utilities: Utility companies to determine work schedule and work on JPA's (COT Water and Sewer) if applicable
3. Roadway Plans: LPA will respond to comments and proceed with 100% design efforts
4. Drainage Design: LPA will respond to comments and proceed with 100% design efforts
5. Environmental: LPA to respond to comments (if applicable) from Leon County concerning the Leon County permit
6. Lighting Justification Report: None
7. Signalization Plans: Poole Engineering will respond and incorporate review comments
8. Signing and Pavement Marking Plans: Poole Engineering will respond and incorporate review comments
9. Geotechnical: Respond to comments if applicable
10. Bridge Plans: 90% structural plans submitted on 10/17/07
11. Other: Landscaping design is being revised to only 1.5% of the total construction amount at the request of the Department. This revision has impacted the submittal of the Leon County Permit
13. Other: Coordination for future Pedrick road closure; awaiting approval from Joe Brown with Leon County
14. Other: Review comments from the FDOT regarding the 90% design plans have been received and responses are underway

ACRONYMN GLOSSARY

ACOE	Army Corp of Engineers
CAC	Citizens Advisory Committee
CDM	Camp, Dresser & McKee Inc.
CEI	Construction Engineering & Inspection
CLOMR	Conditional Letter of Map Revision
CLS	Carr, Lynch & Sandell
COT	City of Tallahassee
CR	Community Representative
CRCDD	Capital Regional Community Development District
CRTPA	Capital Region Transportation Planning Agency
DB	Design-Build
DMS	Department of Management Services
DRB	Dispute Resolution Board
EIA	Environmental Impact Assessment
EIS	Environmental Impact Study
EMP	Environmental Management Permit
ERP	Environmental Resource Permit
ETD	Estimated to Date
ETDM	Efficient Transportation Decision Making
FCT	Florida Communities Trust
FDEP	Florida Department of Environmental Protection
FDOT	Florida Department of Transportation
FHWA	Federal Highway Administration
FWC	Florida Fish & Wildlife Conservation Commission
FY	Fiscal Year (For BLUEPRINT 2000, October to September)
GEC	General Engineering Consultant
GM	Growth Management
IA	Intergovernmental Agency

ACRONYMN GLOSSARY

IFB	Invitation For Bid
ITE	Institute of Transportation Engineers
JPA	Joint Participation Agreement
LDCA	Location Design Concept Approval
LOA	Letter of Authorization
LOMR	Letter of Map Revision
MBE	Minority Business Enterprise
MOT	Maintenance of Traffic
MSE	Mechanically Stabilized Earthwall
NFI	Natural Features Inventory
NTP	Notice to Proceed
NWFWMD	Northwest Florida Water Management District
OT	Order of Taking
PD&E	Project Development and Environment
ROW	Right-of-Way
SFMP	Stormwater Facility Management Plan
SHPO	State Historic Preservation Office
SOS	Scope of Services
SUE	Subsurface Utility Excavation
TCC	Technical Coordinating Committee
TIITF	Trustees of the Internal Improvement Trust Fund
UAO	Utility Agency Owner
USFS	United States Forest Service
USFWS	US Fish and Wildlife Service
VE	Value Engineering
YTD	Year to Date