

BLUEPRINT 2000 & BEYOND

1311 Executive Center Drive, Suite 109
Koger Center, Ellis Building
Tallahassee, Florida 32301

TABLE OF CONTENTS

I. Monthly Progress Reports

	<u>Page</u>
GEC – General Engineering Consultant	1
GEC – Public Involvement	5
N1 - Capital Circle NW – I-10 to US 90	6
N2 - Capital Circle NW/SW – SR 371 to US 90	11
W1 - Capital Circle SW – Crawfordville Road to SR 20	16
E3 - Capital Circle SE – Woodville Highway to Crawfordville Road	20
E2 - Capital Circle SE – Woodville Highway to Tram Road	24
E1 - Capital Circle SE – Tram Road to Connie Drive	28
C2 - Capital Cascade Trail –Segment 2 Design.....	37
Mahan drive/US 90 – Dempsey Mayo Road to I-10 (Tier 2 Blueprint Project)	41
Other	43

GEC – GENERAL ENGINEERING CONSULTANT

Project Description:

General Engineering Consultant Contract for the Blueprint Intergovernmental Agency. The LPA Group Incorporated is the Prime Consultant with Jacobs Civil, Incorporated as the major subconsultant. Twelve additional subconsultants, seven of which are MBE firms, make up the LPA/Jacobs Blueprint GEC Management Team.

Key Personnel:

Program Manager: Bill Little - Jacobs
Design Manager: Marek Romanowski - The LPA Group

Contract Cost & Schedule Status – Contract 597

Original Contract Amount:	\$	7,494,493.00
Fiscal Year Re-Authorization:	\$	4,525,519.00
Executed Supplemental Agreements:	\$	0.00
Pending Supplemental Agreements:	\$	0.00
Current Contract Amount:	\$	12,020,012.00
Invoiced to Date:	\$	7,344,827.65
Remaining Contract Amount:	\$	4,675,184.35
Percent of Contract Amount Complete:		61.1%

GEC – GENERAL ENGINEERING CONSULTANT

Subconsultant Participation:	Contract Amt	% of GEC Contract	ETD	YTD
Moore Bass Consulting <i>Stormwater & Landscaping</i>	\$ 170,677.00	1.42	\$ 73,060.93	\$ 4,684.50
Pope Environmental <i>Environmental Services</i>	\$ 211,276.00	1.76	\$ 125,002.50	\$ 0.00
OLH International <i>Program Controls</i>	\$ 1,363,231.00	11.34	\$ 1,157,528.66	\$ 38,461.41
Katherine Beck Consulting <i>Government Relations</i>	\$ 45,000.00	0.37	\$ 23,042.44	\$ 2,200.00
Quest Corporation of America <i>Public Involvement</i>	\$ 592,959.00	4.93	\$ 316,623.90	\$ 22,155.40
Uzzell Advertising <i>Public Relations, Web Maint.</i>	\$ 217,405.00	1.81	\$ 219,962.96	\$ 20,136.00
Welch & Ward Architects <i>Architecture, Recreation Facilities</i>	\$ 0.00	0.00	\$ 0.00	\$ 0.00
THC Right-of-Way Services, Inc. <i>R/W appraisal and acquisition</i>	\$ 2,379,149.00	19.79	\$ 879,586.43	\$ 86,974.00
Berryman & Henigar <i>Survey and mapping</i>	\$ 326,406.00	2.72	\$ 130,937.15	\$ 2,803.28
Weigal - Veasey <i>Property Appraisal</i>	\$ 0.00	0.00	\$ 0.00	\$ 0.00
Williams Earth Sciences <i>Geotechnical Services</i>	\$ 0.00	0.00	\$ 4,286.78	\$ 0.00
Allen Nobles & Associates <i>Survey</i>	\$ 0.00	0.00	\$ 73,726.00	\$ 0.00
THE LPA GROUP (PRIME) <i>Prime Consultant</i>	\$ 3,444,733.00	28.66	\$ 2,542,756.55	\$ 186,780.62
JACOBS (PRIME SUB) <i>Prime Subconsultant</i>	\$ 3,269,176.00	27.20	\$ 1,798,313.35	\$ 162,251.76
<hr/>				
Total Contract:	\$ 12,020,012.00	100.00%	\$ 7,344,827.65	\$ 526,446.97

MBE Goal:	\$ 1,863,101.86	15.50%
MBE to Date:	\$ 1,915,221.39	26.08%

GEC – GENERAL ENGINEERING CONSULTANT

Activities Since Last Period:

1. Attended regular meetings concerning E1-CCSE
2. Continued coordination on Mahan Drive/US 90 Project
3. Attended regular coordination meetings on E2-CCSE
4. Attended regular FDOT Leon County Construction Coordination Meeting
5. Continued coordination meetings on CCT-Segment Two Design
6. Coordinated w/ FHWA on W1-CCSW - 12/6
7. Coordinated w/ St. Joe on E2-CCSE issues - 12/6
8. Continued coordination on N2-CCNW/SW Leon County GM, LCSD
9. Added City Water/Sewer work to E2-CCSE Design-Build RFP
10. Coordinated landscape plan issues E1-CCSE
11. Coordinated w/ FDOT central office - parking issues for CCT Segment 2
12. Coordinated N1-CCNW landscape project w/ FDOT
13. Conducted first Community Representatives meeting on W1-CCSW
14. Coordinated box culvert issue CCT Segment 2

Planned Activities for Next Period:

1. Continue coordination w/ St. Joe on approach for E1-CCSE for Segment 3 ponds
2. Continue assistance with N1-CCNW
3. Continue coordination of box culvert issue CCT Segment 2
4. Continue pre-contract activities for DB for E2-CCSE
5. Continue coordination for Mahan Drive/US 90 Project
6. Develop written response to VE study recommendations for N2-CCNW/SW
7. Continue coordination w/ St. Joe Company on E2 ponds/new criteria

Significant Issues and Resolutions:

ISSUE

E1-CCSE Stormwater Facilities Master Plan

RESOLUTION

Permit issued. Coordinate with St. Joe Company on contracting alternatives

ISSUE

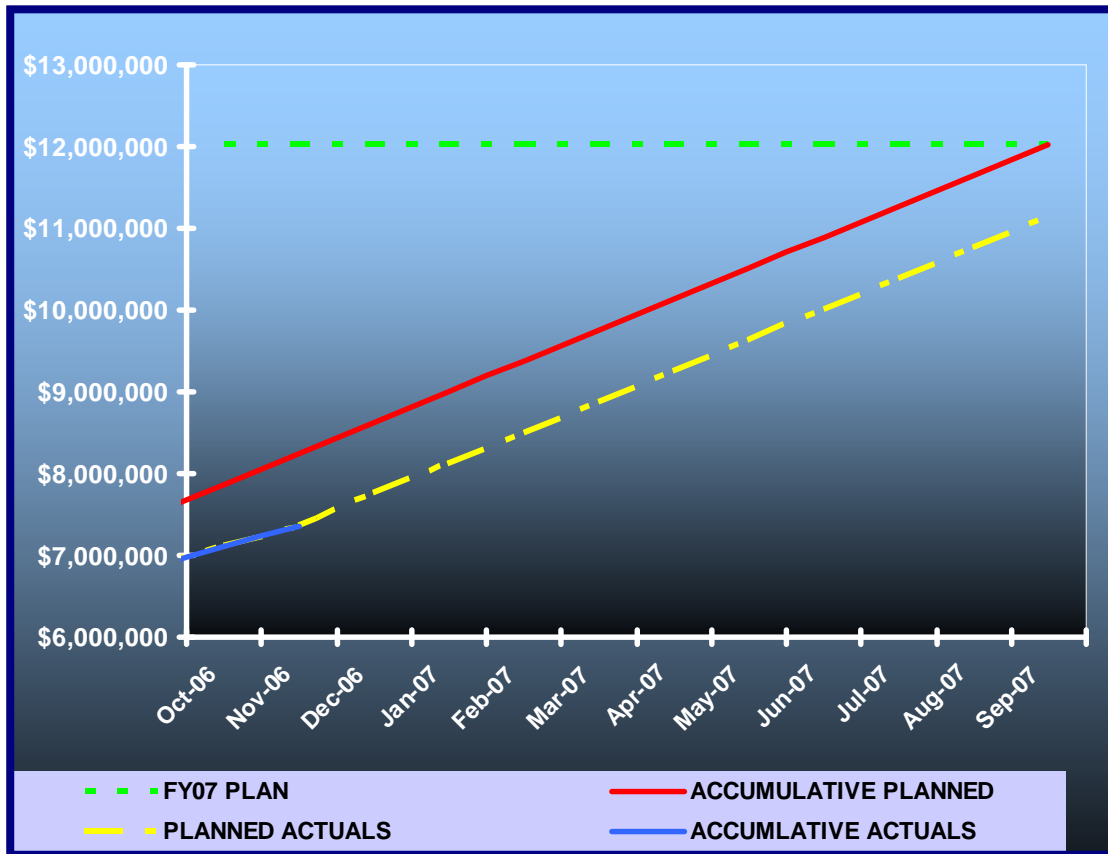
E2-CCSE Draft Stormwater Regulations effect on proposed pond design

RESOLUTION

Provide ongoing coordination with St. Joe Company to ensure design flexibility

GEC – GENERAL ENGINEERING CONSULTANT

GEC Contract Financial Summary of Planned Vs. Actual Costs – FISCAL YEAR 2006



GEC – PUBLIC INVOLVEMENT

Activities Since Last Period:

1. Prepared E2 Pre-Proposal Conference Presentation
2. Organized first Community Representative Meeting for W1-CCSW
3. Updated and maintained ACT Database
4. Prepared Booklet for Cascade Park Strategic Plan Development Workshop
5. Prepared Press Release on Trip Funds to date
6. Produced Monthly Production Report
7. Attended two E1 CEI Meetings

Planned Activities for Next Period:

1. Attend two E1 CEI Meetings
2. Maintain and Update ACT Database
3. Maintain and Update Web Page
4. Prepare presentation for Florida Water Environment Association Banquet
5. Organize second Community Representative Meeting for W1-CCSW
6. Organize places to hold community mini-charrettes for W1-CCSW



N1 - CAPITAL CIRCLE NW – I-10 TO US 90

Project Description:

The proposed 1.991-mile roadway project (FPID: 219722-1) consists of upgrading the existing undivided rural facility to a six-lane divided urban (curb and gutter) facility. Upgrades to the West Tennessee, Tharpe, Hartsfield and Commonwealth intersections will also be included. The purpose of the roadway improvement project is to increase the capacity and safety of the existing highway. The roadway project was designed, let and constructed by the Florida Department of Transportation, with advance funding provided by the Blueprint 2000 Intergovernmental Agency.



727.520.8181
www.aerophoto.com

Capital Circle NW I-10 to US 90

Negative # 61204 960

Date 12.04.06

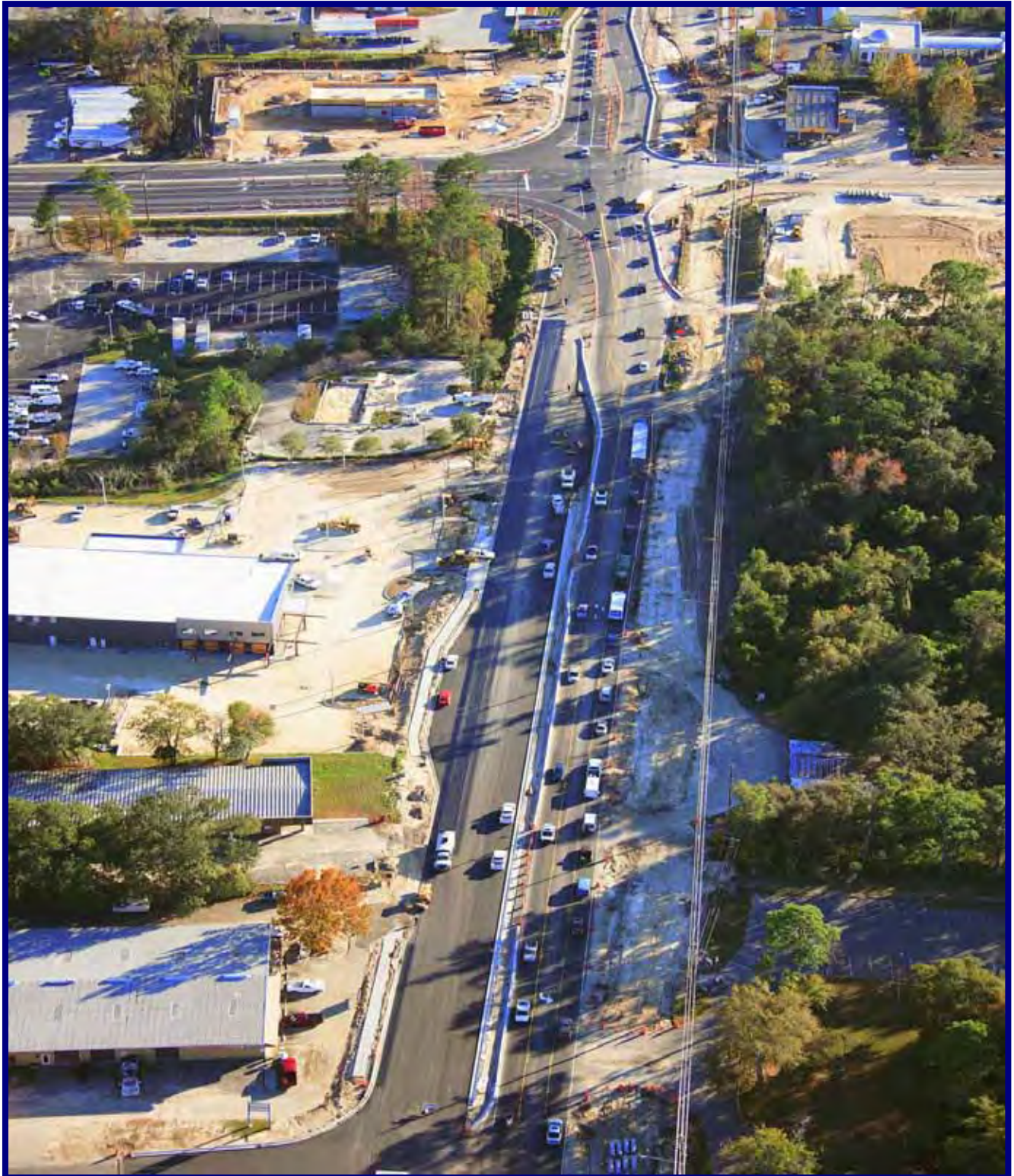
Pond 2 – Significantly Completed

N1 - CAPITAL CIRCLE NW – I-10 TO US 90

MONTHLY PROJECT STATUS REPORT				Page 1 of 2		
Week Ending 12/10/2006						
PROJECT ADMINISTRATION INFORMATION						
FINANCIAL PROJECT NO.	219722-1-52-01 & 02		RESIDENT ENGINEER	Steve Martin, P.E.		
CONTRACT NO.	T3154		PROJECT ADMINISTRATOR	Jerry McClure		
FEDERAL AID NO.	N/A		CONTRACTOR	M of Tallahassee, Inc.		
ORIGINAL CONTRACT AMOUNT (A) Bid.	\$25,462,923.43		CURRENT CONTRACT AMOUNT	\$25,479,701.89		
COUNTY	LEON		DESIGN FIRM	FDOT Roadway Design		
DESCRIPTION	SR 264 (Capital Circle NW) from a Pt S of SR 10 (US90/W Tennessee St) to the SR 8 (I-10) West ramp					
CONTRACT TIME SUMMARY		PROGRESS SUMMARY		CURRENT	PREVIOUS	
ORIGINAL DAYS	825	PLANNED		53.39%	49.15%	
WEATHER	24	ACTUAL		62.15%	57.51%	
GRANTED (S.A.)	0	CONTRACT TIME USED		51.94%	47.93%	
GRANTED (F.S.A.)	0	EXPLANATION				
GRANTED (OTHER)	0					
TOTAL CONTRACT	849					
DAYS USED	441	DATE SUMMARY				
TOTAL REMAINING	408	CONTRACT EXECUTED		8/15/2005		
SUSPENSION DAYS	0	NOTICE TO PROCEED		9/14/2005		
PENDING DAYS	0	CONTRACT START DATE		9/26/2005		
NUMBER OF AVAILABLE WORK DAYS THAT CONTRACTOR ELECTED TO PERFORM NO WORK	0	DATE WORK STARTED		9/26/2005		
		ANTICIPATED FINAL ACCEPT.		12/28/2007		
		CONTRACT TIME EXPIRATION		12/29/2007		
GRANTED DAYS SUMMARY						
STATUS	REASON			NUMBER OF DAYS		
Approved	Weather Days Granted by Weather Letter No. 3			3		
Approved	Weather Days Granted by Weather Letter No. 4			4		
Approved	Weather Days Granted by Weather Letter No. 5			2		
Approved	Weather Days Granted by Weather Letter No. 6			1		
Approved	Weather Days Granted by Weather Letter No. 8			4		
Approved	Weather Days Granted by Weather Letter No. 10			4		
Approved	Weather Days Granted by Weather Letter No. 13			4		
Approved	Weather Days Granted by Weather Letter No. 15			2		
TOTAL NUMBER OF DAYS				24		
SUPPLEMENTAL AGREEMENT SUMMARY						
SA #	# DAYS	Sub. Date	Exe. Date	Status	Reason/Description	Amount
999-25-01	0	5/8/2006	5/30/2006	Approved	Additional Erosion Control Measures	\$1,868.45
999-25-02	0	6/5/2006	6/13/2006	Approved	Add Pay Items for Removable Work Zone Pavement Markings	\$43,430.00
999-25-03	0	7/13/2006	7/17/2006	Approved	Temporary Drainage Structures & Pipes	\$33,580.00
999-25-04	0	7/14/2006	7/17/2006	Approved	Relocation of Double-Post Sign	\$2,453.00
006	0	8/1/2006	7/21/2006	Approved	July 2005 Asphalt Specification Change	-\$23,382.06
009	0	9/7/2006	9/25/2006	Approved	Unilateral Pymt. - Addl MOT	\$19,238.72
008	0	9/14/2006	10/3/2006	Approved	RWZPM's	\$20,921.80
Total Supplemental Agreement Amount-to-Date						\$98,109.91

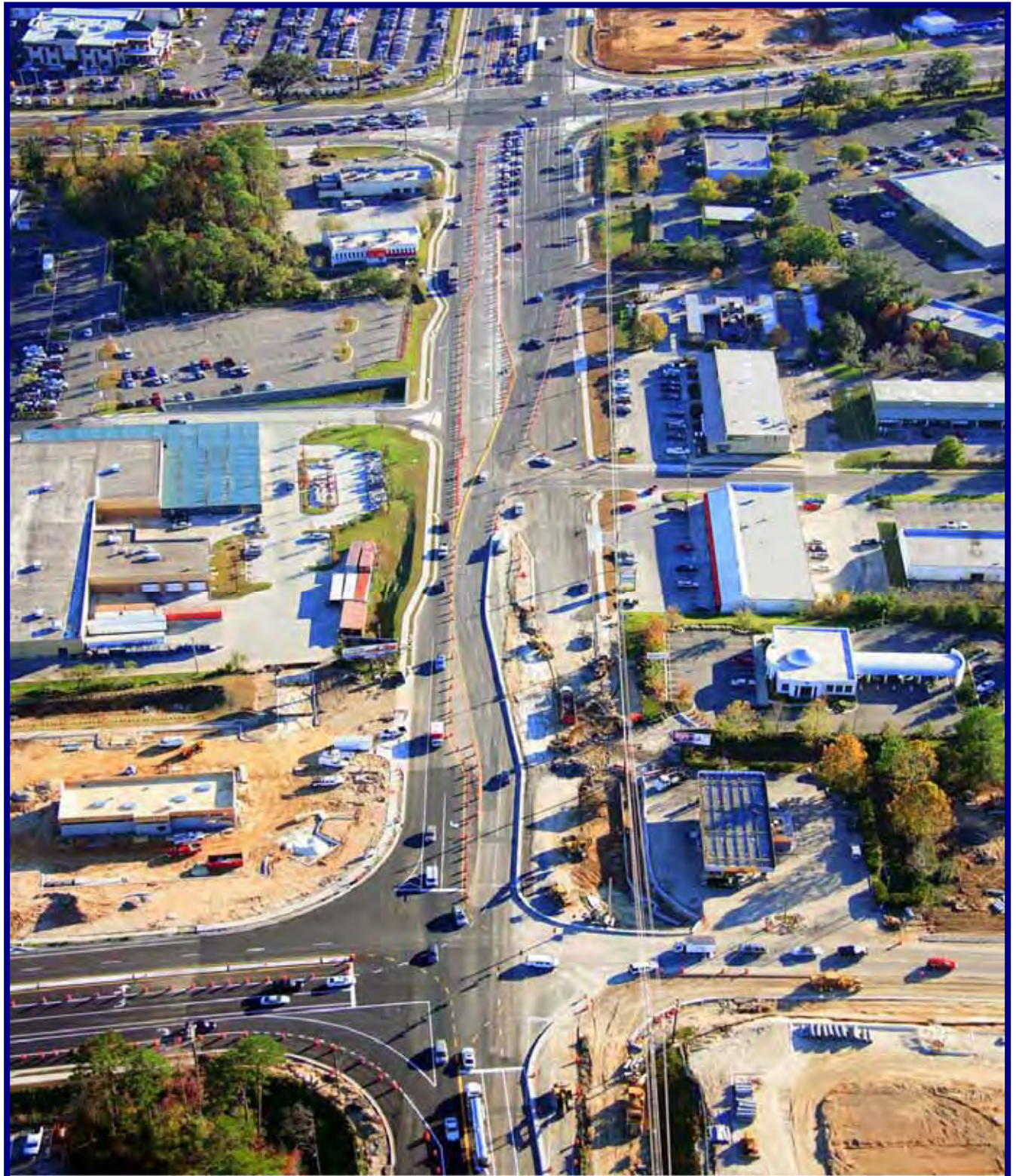
N1 - CAPITAL CIRCLE NW – I-10 TO US 90

CCNW Looking South from Hartsfield Road to Tharpe Street Intersection



N1 - CAPITAL CIRCLE NW – I-10 TO US 90

CCNW Looking South from Tharpe Street to Tennessee Street



N1 - CAPITAL CIRCLE NW – I-10 TO US 90

Activities Since Last Period:

1. Work since last period includes clearing and grubbing; Pond #2 excavation; regular and subsoil excavation; storm sewer; Type-B stabilization, asphalt base & structural course; curb & gutter; sidewalk, sodding; signalization; Relocation of water / electric / cable utilities
2. Traffic Swap-over to new SB lanes from Tharpe Street to Tennessee Street occurred 11/30/06

Planned Activities for Next Period:

1. Continue excavation, storm sewer; Type-B stabilization, curb & gutter, sidewalks, sodding, signalization, asphalt base & structural course; relocations of water, electric and cable utilities
2. Continue NB paving operations from Tharpe Street to Hartsfield
3. Complete Pond #2 (filter is only item remaining), anticipate completion by July 2007

Right-Of-Way Status Report:

CLOSED - (IN POSSESSION)	100
AGREEMENTS SECURED BUT NOT CLOSED	21
DONATION	4
NEGOTIATING/PREPARING FOR SUIT	0
TOTAL PARCELS ON PROJECT	125

As of December 2006 FDOT reported:

1. Right of Way cost expended so far is approximately \$44,800,000
2. There are 21 parcels remaining to be settled through mediation
3. The total Right of Way cost is estimated to be \$47,831,058

N2 - CAPITAL CIRCLE NW/SW – SR 371 TO US 90

Project Description:

The Expanded Project Development and Environment (PD&E) Study limits for this 2.9 mile project extend from Orange Avenue (SR 371) to Tennessee Street (US 90/SR 10). This project also includes the preparation of approximately 60% design plans, etc.

Project Personnel:

Blueprint 2000:	Project Manager:	Paul Hiers
H.W. Lochner:	Project Manager:	Hugh Williams

Contract Cost & Schedule Status - Agreement No. 772/Authorization 1 - As of 12/6/2006

Contract Commencement:	10May04
Contract Completion:	10May07
Percent of Work Performed:	76.3%
Original Contract Amount:	\$ 1,921,585.90
Executed Supplemental Agreements:	\$ 1,055,540.90
Pending Supplemental Agreements:	\$ 0.00
Current Contract Amount:	\$ 2,977,126.80
Invoiced to Date:	\$ 2,024,895.80
Remaining Contract Amount:	\$ 952,231.00
Percent of Contract Amount Complete:	68.0%
Original Contract Time:	1095 Days
Contract Time Extensions:	0 Days
Current Contract Time:	1095 Days
Contract Time Expended:	879 Days
Contract Time Remaining:	216 Days
Percent Contract Time Expended:	80.3%

Schedule Milestones:

30% Roadway Plans	28Aug06
Final Environmental Documents	20Jun06
Final Preliminary Engineering Report	20Jun06
60% Roadway Plans	28Feb07
Draft ROW Maps	12Sep06
Final ROW Maps	28Feb07
Location Design Concept Approval (LDCA)	22Aug06
VE Complete	27Oct06

N2 - CAPITAL CIRCLE NW/SW – SR 371 TO US 90

Design Subconsultant Participation:	Contract Amt	% of Design Contract	ETD	YTD
Environmental Geotechnical Specialists				
<i>Geotechnical</i>	\$ 444,860.75	14.94	\$ 146,950.41	\$ 90,019.23
Diversified Design & Drafting Services, Inc.				
<i>Survey and R/W Mapping</i>	\$ 556,954.64	18.71	\$ 465,171.23	\$ 293,787.19
Archaeological Consultants, Inc.				
<i>Cultural Resource Assessment</i>	\$ 19,588.27	0.66	\$ 10,399.79	\$ 0.00
HNTB/TEI				
<i>Traffic Analysis</i>	\$ 81,510.59	2.74	\$ 90,310.59	\$ 11,606.21
American Acquisition Group				
<i>Right of Way</i>	\$ 97,873.48	3.29	\$ 94,046.22	\$ 8,071.70
HW LOCHNER (PRIME)				
<i>Prime Consultant</i>	\$ 1,776,339.07	59.67	\$ 1,218,017.56	\$ 623,440.99
<hr/>				
Total Design Contract:	\$ 2,977,126.80	100.00%	\$ 2,024,895.80	\$ 1,026,925.32

Design MBE Goal:	\$ 461,454.65	15.50%
Design MBE to Date:	\$ 622,521.43	30.74%

N2 - CAPITAL CIRCLE NW/SW – SR 371 TO US 90

Project Status:

VE Study complete

Conducting pond and mitigation survey, analysis and design

Proceeding toward 60% roadway plans completion

Activities Since Last Period:

1. Responded to FDOT comments on the Design Speed Variance and resubmitted document
2. VE Study complete. Currently evaluating 5 recommendations
3. Continued survey, geotechnical investigation, analysis and design of the pond and mitigation sites
4. Continued development of 60% Roadway Plans
5. Continued the structural analysis for bridge at Gum Creek
6. Provided responses to Phase 1 Review Comments

Planned Activities for Next Period:

1. Respond to VE recommendations
2. Complete the boundary and topo. Survey and geotechnical investigations at the Delta and Airport pond sites.
3. Commence survey of mitigation sites along Swamp Fox Rd. and Tanglewood Estates.
4. Continue to assist with the issue of pond ownership and maintenance
5. Continue to assist with R/W acquisition of Delta, Broadmoor, Mitchell, Josh Casper, and Tanglewood properties.
6. Complete Shuler Road realignment
7. Continue pond and mitigation design and definition of pond and mitigation area R/W.
8. Continue development of 60% Roadway Plans

Significant Issues and Resolutions:

ISSUE

FDOT has made the determination that this project must meet the FIHS Design Speed of 50 MPH. The project is currently designed for 45 MPH urban facility. Blueprint has submitted to District Three a variance on the FIHS typical section requirements.

RESOLUTION

District Three has agreed to present the variance request to the appropriate Central Office staff. The variance has been finalized and resubmitted to FDOT on 12/5/06.

ISSUE

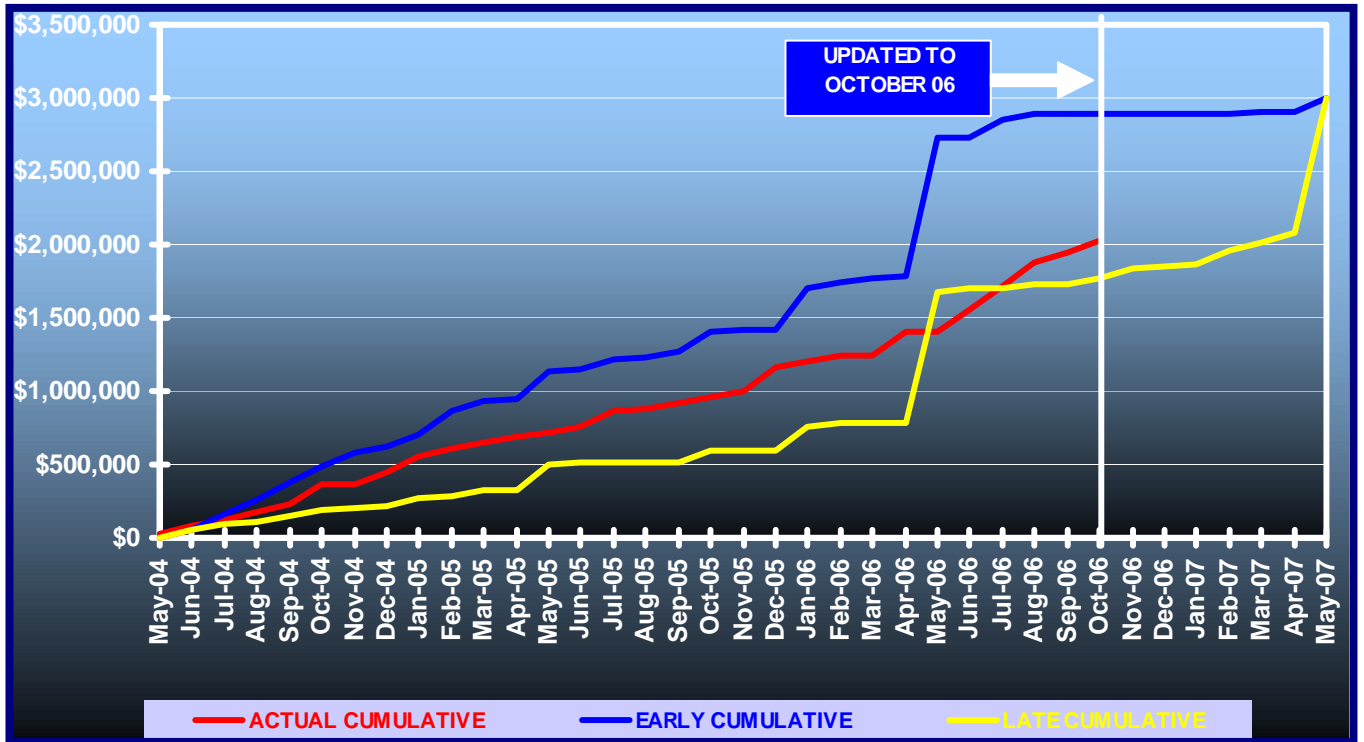
Ownership and maintenance of the Broadmoor, Delta and Perkins ponds.

RESOLUTION

Blueprint is seeking agreements with Leon County School for Perkins pond and with Leon County for Broadmoor pond and the City for the Delta pond.

N2 - CAPITAL CIRCLE NW/SW – SR 371 TO US 90

Contract Financial Summary of Planned Vs. Actual Costs



N2 - CAPITAL CIRCLE NW/SW – SR 371 TO US 90

Right-Of-Way Status Report:

CLOSED - (IN POSSESSION)	0
AGREEMENTS SECURED BUT NOT CLOSED	0
DONATION	0
NEGOTIATING/PREPARING FOR SUIT	61
TOTAL PARCELS ON PROJECT	61

- ◆ Blueprint has an agreement to acquire the Delta Parcel (approximately 113 acres). Closing is scheduled to occur on December 29, 2006.
- ◆ Blueprint has also identified the former Broadmoor Estates Parcel as a parcel needed for a pond site. This parcel was acquired by the Tallahassee Regional Airport (TRA). TRA used City of Tallahassee and FAA Funds to acquire this parcel. If the parcel is sold or transferred from TRA ownership (even to another city agency such as Blueprint) the parcel must be appraised and conveyed at fair market value. Funds received from the conveyance would reimburse the FAA. This is an excellent pond site and Blueprint has obtained an appraisal of the former Broadmoor Estates Parcel and submitted it to the City of Tallahassee Real Estate Department. The City of Tallahassee Real Estate Department informed Blueprint that due to the value of the appraisal submitted by Blueprint they would need to get a supporting appraisal. We are awaiting the completion of this appraisal before continuing our efforts to acquire this site.
- ◆ Blueprint received approval from the IA at the September 16, 2006 meeting to acquire 61 parcels. Negotiations are ongoing for appraisal, acquisition, and relocation services.

W1 - CAPITAL CIRCLE SW – CRAWFORDVILLE ROAD TO SR 20

Project Description:

A Project Development and Environment (PD&E) Study of Capital Circle (SR 263) between Crawfordville Road (SR 61 US 319) and Blountstown Highway (SR 20) a distance of approximately 6.7 miles. The PD&E study is being conducted in accordance with Federal Highway Administration (FHWA), Blueprint 2000 Agency, and Florida Department of Transportation (FDOT) guidelines. The study evaluates alternative alignments as well as the existing alignment. Several viable alternatives are being developed and evaluated in order to address the project needs while taking into account the Blueprint 2000 & Beyond "Project Definitions Report", prepared by the Economic and Environmental Consensus Committee in 1999, and the Lake Bradford Sector Plan, conducted by the Tallahassee/Leon County Planning Department.

Project Personnel:

Blueprint 2000:	Planning Manager:	Dave Bright
	Project Manager:	Paul Hiers
Kimley-Horn & Assoc.:	Project Manager:	Steve Godfrey

Contract Cost & Schedule Status - Agreement No. 1284/Authorization 1 - As of 11/30/2006

Contract Commencement:	22Aug06
Contract Completion:	22Aug09
Percent of Work Performed:	9.6%
Original Contract Amount:	\$ 2,672,271.68
Executed Supplemental Agreements:	\$ 0.00
Pending Supplemental Agreements:	\$ 0.00
Current Contract Amount:	\$ 2,672,271.68
Invoiced to Date:	\$ 165,528.00
Remaining Contract Amount:	\$ 2,506,743.68
Percent of Contract Amount Complete:	6.2%
Original Contract Time:	1096 Days
Contract Time Extensions:	0 Days
Current Contract Time:	1096 Days
Contract Time Expended:	100 Days
Contract Time Remaining:	996 Days
Percent Contract Time Expended:	9.1%

Schedule Milestones:

Consultant Selected	26May06
Study Begins	22Aug06
Agency Kick-off Meeting	19Oct06
Public Kick-off Meeting	19Oct06
Community Mini-Charrettes	15Jan07
Community Meeting	30Mar07
Corridor/Concepts Charrette	04May07
Alternatives Public Information Meeting	07Apr08
Preferred Alternative Public Meeting	10Dec08
Public Hearing	01Jun09

W1 - CAPITAL CIRCLE SW – CRAWFORDVILLE ROAD TO SR 20

Consultant Participation:	Contract Amt	% of Contract	ETD	YTD
Target Copy and Sign Printers <i>Printing</i>	\$ 30,000.00	1.12	\$ 2,403.70	\$ 2,403.70
Keystone Field Services <i>Relocation</i>	\$ 35,000.00	1.31	\$ 0.00	\$ 0.00
Environmental and Geotechnical Specialists <i>Geotech</i>	\$ 59,830.00	2.24	\$ 0.00	\$ 0.00
Diversified Design & Drafting Services <i>Survey</i>	\$ 127,874.94	4.79	\$ 0.00	\$ 0.00
StategyWise, LLC <i>Economic Development</i>	\$ 19,500.00	0.73	\$ 0.00	\$ 0.00
Hamilton	\$ 18,600.00	0.70	\$ 0.00	\$ 0.00
Registe, Sliger Engineering <i>Structures</i>	\$ 123,376.71	4.62	\$ 0.00	\$ 0.00
KIMLEY-HORN & ASSOC. <i>Prime</i>	\$ 1,596,614.64	59.75	\$ 157,287.65	\$ 106,674.97
Dr. Wayson <i>Noise</i>	\$ 30,147.25	1.13	\$ 0.00	\$ 0.00
Hass Center <i>Economic Development</i>	\$ 37,200.00	1.39	\$ 0.00	\$ 0.00
Florida Acquisition & Appraisal <i>Appraisal/Acquisition</i>	\$ 235,804.91	8.82	\$ 5,836.65	\$ 5,836.65
Biological Research Assoc. <i>Water Quality</i>	\$ 105,815.50	3.96	\$ 0.00	\$ 0.00
Search, Inc <i>Cultural Resource/Archaeological</i>	\$ 53,826.73	2.01	\$ 0.00	\$ 0.00
Camp, Dresser & McKee <i>Drainage & Pond Design</i>	\$ 198,681.00	7.43	\$ 0.00	\$ 0.00
Total Contract:	\$ 2,672,271.68	100.00%	\$ 165,528.00	\$ 114,915.32

MBE Goal:	\$ 414,202.11	15.50%
MBE to Date:	\$ 2,403.70	1.45%

W1 - CAPITAL CIRCLE SW – CRAWFORDVILLE ROAD TO SR 20

Project Status:

Kimley-Horn and Associates began the Capital Circle Southwest PD&E study in late August. The Public and Agency Kickoff Meetings were conducted on October 19, 2006. The Community Representatives Kick-off meeting was held on December 6, 2006.

The project is currently in the data collection phase.

Activities Since Last Period:

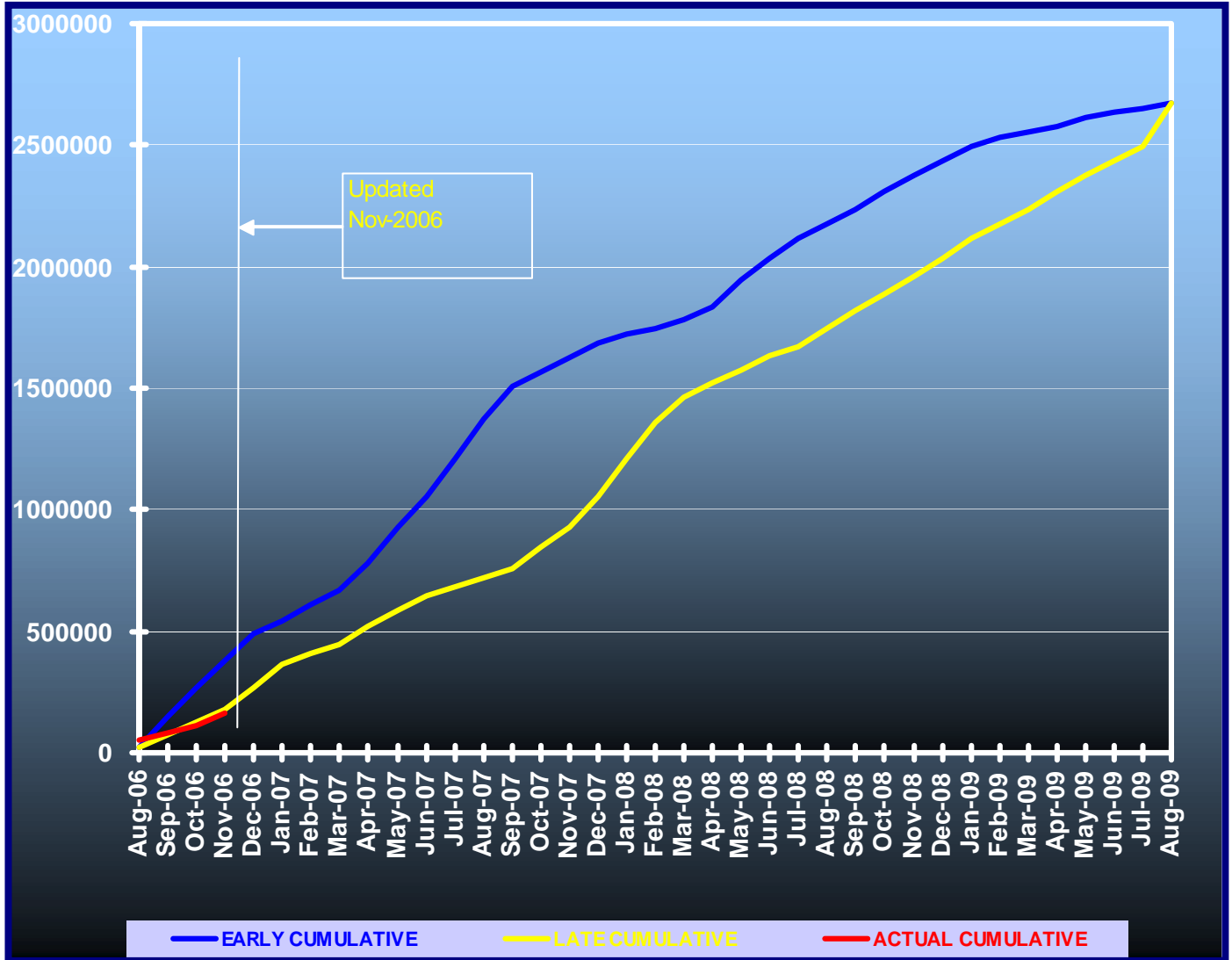
1. Continued data collection
2. Development of plan and materials for mini-charrettes
3. Prepared for and conducted the Community Representatives Kick-off Meeting
4. Initial planning of white papers
5. Continued development of model for long range forecasts
6. Continued development of base map
7. Preliminary reviews of property values in study area
8. Conducted coordination meetings with FHWA and local environmental agencies

Planned Activities for Next Period:

1. Continue data collection
2. Continue preparation for the community mini-charrettes to be held during the month of January
3. Begin noise baseline data collection
4. Begin developing the traffic model for long range forecasts
5. Summarize safety data
6. Develop project typical section and design criteria
7. Complete assessment plan for Black Swamp; DEP to review

W1 - CAPITAL CIRCLE SW – CRAWFORDVILLE ROAD TO SR 20

Contract Financial Summary of Planned Vs. Actual Costs



E3 - CAPITAL CIRCLE SE – WOODVILLE HWY TO CRAWFORDVILLE RD

Project Description:

This project proposes to widen approximately 1.53 miles of the existing two-lane Capital Circle SE from Woodville Highway to Crawfordville Road to an ultimate multi-lane urban facility.

FDOT Roadway ID: 55002000 SR 263 from MP 0.200 to MP 1.730

Project Personnel:

Blueprint 2000:	Design Manager:	Marek Romanowski
	Project Manager:	Gary Phillips
URS Corporation:	Project Manager:	Masoud Foroughi

Contract Cost & Schedule Status - Agreement No. 1167/Authorization 1 - As of 11/17/2006

Contract Commencement:	02Feb06
Contract Completion:	12Sep07
Percent of Work Performed:	46.0%
Original Contract Amount:	\$ 885,689.21
Executed Supplemental Agreements:	\$ 0.00
Pending Supplemental Agreements:	\$ 0.00
Current Contract Amount:	\$ 885,689.21
Invoiced to Date:	\$ 448,293.31
Remaining Contract Amount:	\$ 437,395.90
Percent of Contract Amount Complete:	50.6%
Original Contract Time:	587 Days
Contract Time Extensions:	0 Days
Current Contract Time:	587 Days
Contract Time Expended:	288 Days
Contract Time Remaining:	299 Days
Percent Contract Time Expended:	49.1%

Schedule Milestones:

Selection of Design Consultant	16Aug05
IA authorizes Blueprint to execute Contract with Design Consultant	19Sep05
Contract and LOA#1 are executed	02Feb06
Submit Typical Section Package	06Mar06
Submit Pond Siting Report	05Jun06
Submit ROW Control Survey Maps	03Jul06
Submit Phase I Plans	24Oct06
Submit Pavement Design Package	02Nov06
Submit Phase II Plans	12Feb07
Submit Phase II ROW Maps	12Feb07

E3 - CAPITAL CIRCLE SE – WOODVILLE HWY TO CRAWFORDVILLE RD

Design Subconsultant Participation:	Contract Amt	% of Design Contract	ETD	YTD
EGS				
<i>Geotechnical</i>	\$ 67,411.46	7.61	\$ 7,779.56	\$ 7,779.56
ACI				
<i>Cultural Resource (Archaeological)</i>	\$ 8,153.18	0.92	\$ 0.00	\$ 0.00
Mehta				
<i>Survey</i>	\$ 84,499.24	9.54	\$ 80,274.28	\$ 80,274.28
DRMP				
<i>Survey and Mapping</i>	\$ 161,850.03	18.27	\$ 88,640.97	\$ 88,640.97
URS (Prime)				
<i>Design, Environmental, Signalization, Landscaping</i>	\$ 563,775.30	63.65	\$ 271,598.50	\$ 271,598.50
<hr/>				
Total Design Contract:	\$ 885,689.21	100.00%	\$ 448,293.31	\$ 448,293.31

Design MBE Goal:	\$ 137,281.83	15.50%
Design MBE to Date:	\$ 88,053.84	19.64%

Activities Since Last Period:

1. Responded to Phase I (30%) comments
2. Submitted final pond siting report
3. Revised plans per 30% comments.
4. Added existing utilities in plans per utility owner's mark-up
5. Finalizing lighting Justification Report
6. Finalizing NFI Report
7. Worked on Draft Pavement Design

Planned Activities for Next Period:

1. Continue work on phase II plans, Roadway, Drainage, S/M & landscaping design
2. Submit Lighting Justification Report/NFI Report & Pavement Design Package

Significant Issues and Resolutions:

ISSUE

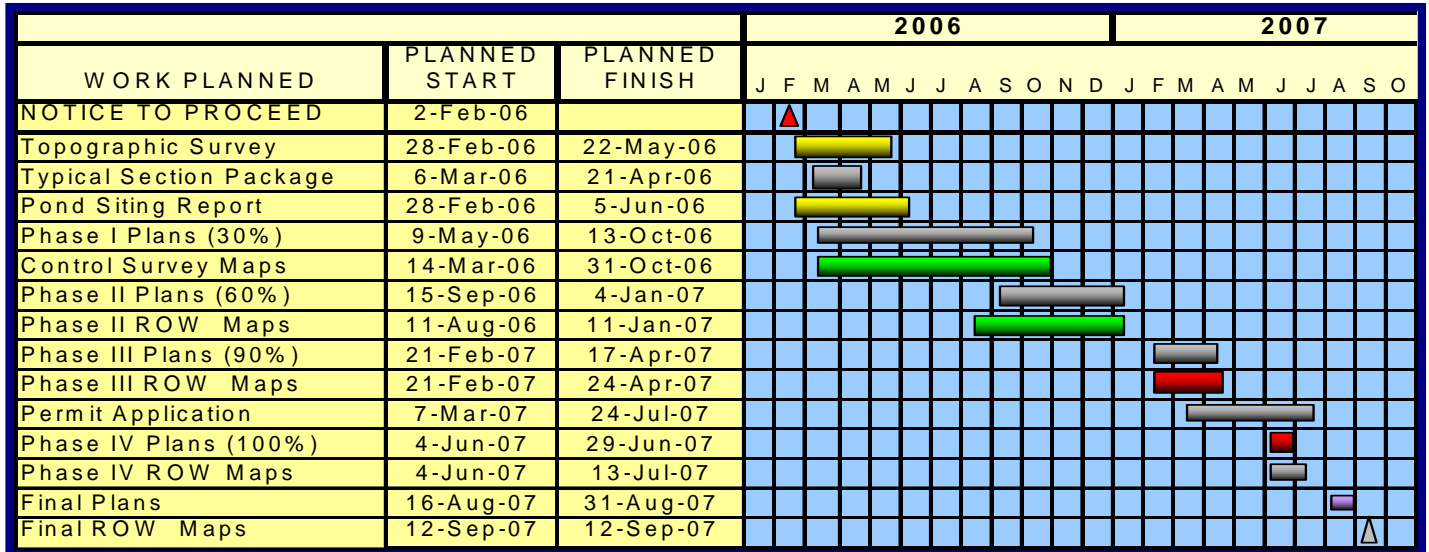
United States Forest Service Parcel (USFS) - Linear Pond Design

RESOLUTION

URS has completed the design and analysis for the ponds located in Basins 2 and 3 within the USFS Parcel. The ponds have been surveyed and a legal description has been provided to USFS and Leon County.

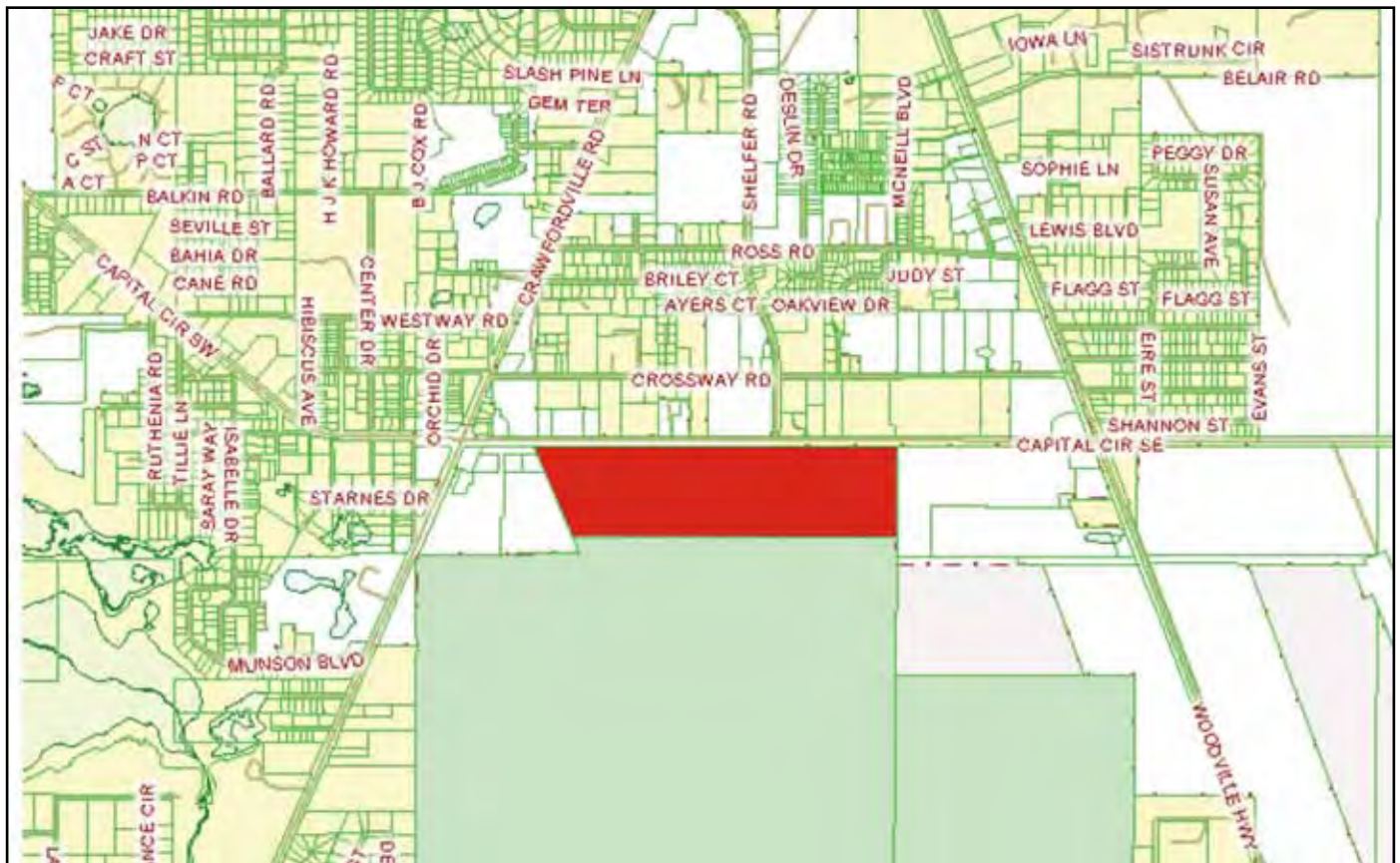
E3 - CAPITAL CIRCLE SE – WOODVILLE HWY TO CRAWFORDVILLE RD

Schedule



E3 - CAPITAL CIRCLE SE – WOODVILLE HWY TO CRAWFORDVILLE RD

Right-Of-Way Status Report:



The Tract is owned by the United States Forest Service (USFS). It appears that the acquisition by Leon County is the most logical and appropriate solution. To accomplish this USFS will need to present legislation to the federal government that would allow USFS to sell this site. If this legislation is approved, USFS has agreed to sell this parcel to Leon County less the land necessary for right-of-way and drainage improvements. The purchase price for Leon County will be determined by appraised value. This value will be based upon the remaining acreage; further USFS has agreed to provide Blueprint with a right-of-way and drainage easements (at no cost to Blueprint) for the E3 project and Blueprint is concurrently proceeding with submitting an application to USFS. Note: This easement application is not subject to the federal legislation being approved; and should the land be acquired by Leon County the easement application process with USFS will be unnecessary.

As of the end of December 2006 we are still waiting on the federal legislation being approved.

E2 - CAPITAL CIRCLE SE – WOODVILLE HIGHWAY TO TRAM ROAD

Project Description:

This project proposes to widen approximately 2.2 miles of the existing two-lane Capital Circle SE from Woodville Highway to Tram Road to an ultimate six-lane facility, mileposts 0.0 to 2.12. In addition, a transitional segment west of Woodville Highway (SR 263 MP 0.0 to approximately MP 0.2).

Project Personnel:

Blueprint 2000:	Design Manager:	Marek Romanowski
	Project Manager:	Doug Martin
DRMP:	Project Manager:	John Burkett
	Assistant PM:	Bryant King

Contract Cost & Schedule Status - Agreement No. 1098 - As of 10/31/2006

Contract Commencement:	20Sep05
Contract Completion:	01Sep07
Percent of Work Performed:	60.0%
Original Contract Amount:	\$ 912,692.13
Executed Supplemental Agreements:	\$ 303,341.70
Pending Supplemental Agreements:	\$ 0.00
Current Contract Amount:	\$ 1,216,033.83
Invoiced to Date:	\$ 1,208,433.97
Remaining Contract Amount:	\$ 7,599.86
Percent of Contract Amount Complete:	99.4%
Original Contract Time:	711 Days
Contract Time Extensions:	-300 Days
Current Contract Time:	411 Days
Contract Time Expended:	406 Days
Contract Time Remaining:	5 Days
Percent Contract Time Expended:	98.8%

E2 - CAPITAL CIRCLE SE – WOODVILLE HIGHWAY TO TRAM ROAD

Design Subconsultant Participation:	Contract Amt	% of Design Contract	ETD	YTD
PBS&J <i>Utilities</i>	\$ 35,977.39	2.96	\$ 67,985.94	\$ 30,000.00
EGS <i>Geotechnical</i>	\$ 160,682.99	13.21	\$ 136,357.91	\$ 51,676.87
Poole <i>Surveying</i>	\$ 87,638.41	7.21	\$ 99,114.69	\$ 35,000.00
DRMP (PRIME) <i>Prime Consultant</i>	\$ 931,735.04	76.62	\$ 904,975.43	\$ 216,509.54
Total Design Contract: \$ 1,216,033.83 100.00% \$ 1,208,433.97 \$ 333,186.41				

Design MBE Goal:	\$ 188,485.24	15.50%
Design MBE to Date:	\$ 235,472.60	19.49%

Project Status:

DRMP has submitted final Invoice.
 Awaiting final review to release retainage
 Essentially the 60% design has been completed
 RFP 0011-07-ER-RC has been advertised
 Three firms short listed
 RFP Released on schedule
 Pre-Proposal Conference held on schedule
 Proposals due December 21, 2006

Activities Since Last Period:

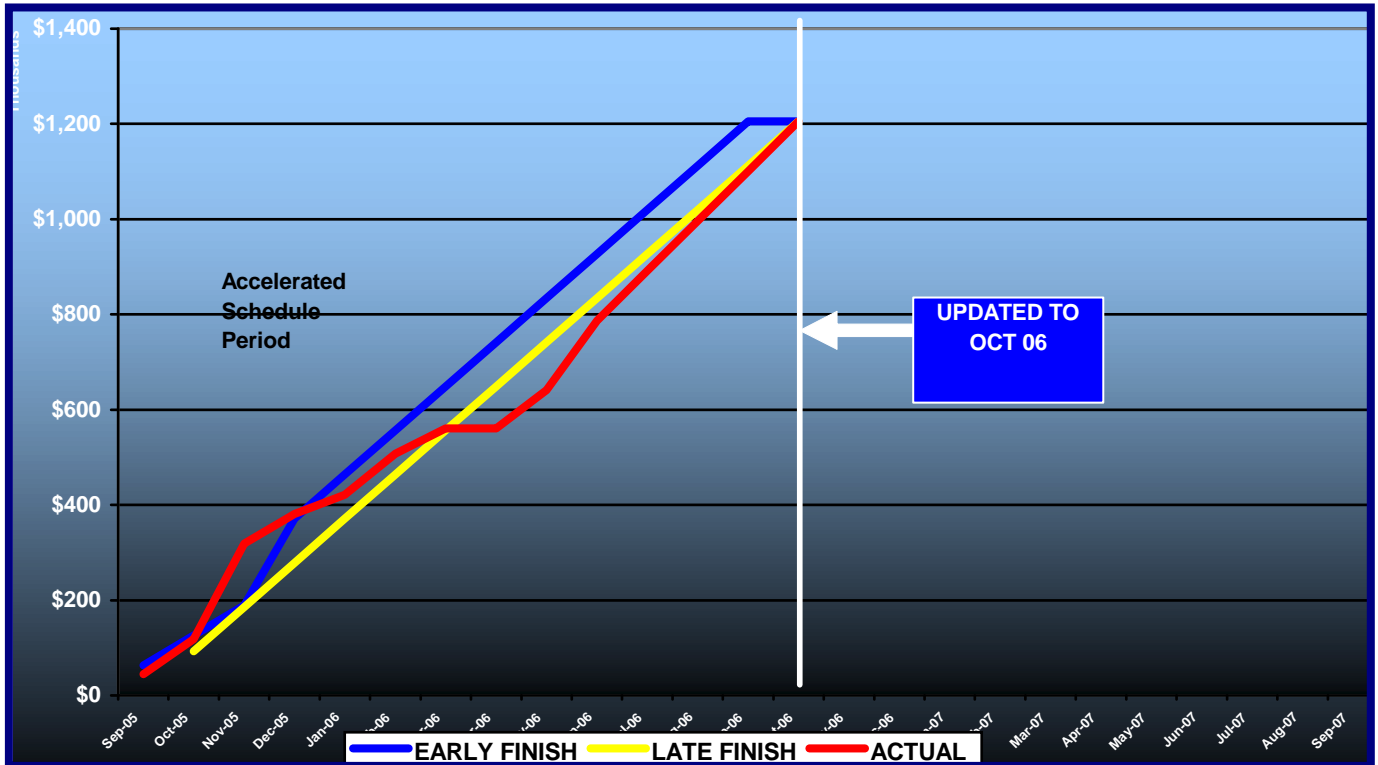
1. Received DRMP's last invoice, release of retainage pending
2. Issued addendum to cover water/sewer work
3. Answered questions from Design-Build Firms. (Extended questions due to Addendum #3)

Planned Activities for Next Period:

1. Final close-out of DRMP involvement.
2. Release retainage and discontinue contract with DRMP
3. Receipt of proposals (Dec. 21, 2006)

E2 - CAPITAL CIRCLE SE – WOODVILLE HIGHWAY TO TRAM ROAD

Contract Financial Summary of Planned vs. Actual Costs



E2 - CAPITAL CIRCLE SE – WOODVILLE HIGHWAY TO TRAM ROAD

Right-Of-Way Status Report:

CLOSED - (IN POSSESSION)	1
AGREEMENTS SECURED BUT NOT CLOSED	
DONATION	1
NEGOTIATING/PREPARING FOR SUIT	18
TOTAL PARCELS ON PROJECT	20

- ◆ Thus far negotiations are under way on five parcels. One of the five parcels has closed and we have agreements on two other parcels pending closing.
- ◆ Additionally we received one parcel via donation from St. Joe and we are in negotiations with them for easement donations for five additional parcels (pond sites).
- ◆ As appraisals are being delivered on the remaining parcels negotiations will continue.

E1 - CAPITAL CIRCLE SE – TRAM ROAD TO CONNIE DRIVE

Project Description:

The proposed 3.44-mile project along Capital Circle Southeast (US 319/SR261) extends from south of Tram Road to Connie Drive (milepost 1.931 and 5.371) in Leon County and includes expanding the existing two-lane undivided rural roadway to a six-lane divided urban (curb and gutter) facility. The purpose of the roadway improvement project is to increase the capacity and safety of the existing highway. New traffic signals, including ITS features, will be provided at six intersections: Tram Road, Shumard Oak Boulevard, Merchants Row Drive, Blair Stone Road, Orange Avenue and Old St. Augustine Road. The project also includes significant landscaping as well as pedestrian, bicycle and recreational amenities.

Project Personnel:

Blueprint 2000:	Program Manager:	Bill Little
	Project Manager:	Marek Romanowski
	Construction Manager:	Marcus Kelly
PBS&J:	Project Manager:	Alan Rainer

Contract Cost & Schedule Status - As of 12/12/2006

Contract Commencement:	10Jan05
Contract Completion:	02Oct07
Percent of Work Performed:	60.1%
Original Contract Amount:	\$ 30,796,339.34
Executed Supplemental Agreements:	\$ 5,818,213.15
Pending Supplemental Agreements:	\$ 137,400.00
Current Contract Amount:	\$ 36,614,552.49
Invoiced to Date:	\$ 21,986,984.93
Remaining Contract Amount:	\$ 14,627,567.56
Percent of Contract Amount Complete:	60.0%
Original Contract Time:	995 Days
Contract Time Extensions:	151 Days
Current Contract Time:	1146 Days
Contract Time Expended:	701 Days
Contract Time Remaining:	445 Days
Percent Contract Time Expended:	61.2%

E1 - CAPITAL CIRCLE SE – TRAM RD TO CONNIE DR

Schedule Milestones:

Intergovernmental Agency (IA) Approval	20Sep04
Execute Contract	22Dec04
Notice to Proceed	10Jan05
Right of Way Acquisition, Phase 1	01May05
Right of Way Acquisition, Phase 2	01Sep06
60% Design Submission - Segment I	28Feb05
90% Design Submission - Segment II	15Apr05
Final Design Submission - Segment II	25Jul05
90% Design Submission - Segment IV	30Aug05
90% Design Submission - Segment III	05Oct05
90% Design Submission - Segment I	14Feb06
Final Design Submission - Segment IV	24May06
Final Design Submission - Segment III	15Aug06
Final Design Submission - Segment I	17May06
Contract Completion	25Jan08

Design Subconsultant Participation:	Contract Amt	% of Design Contract	ETD	YTD
Diversified Design & Drafting Services, Inc.				
<i>Design survey</i>	\$ 111,758.50	0.31	\$ 77,230.00	\$ 0.00
Allen Nobles & Associates, Inc.				
<i>Tree survey for permit application</i>	\$ 18,000.00	0.05	\$ 18,000.00	\$ 18,000.00
Environmental & Geotechnical Specialists, Inc.				
<i>Geotechnical design services</i>	\$ 163,985.26	0.45	\$ 163,985.26	\$ 2,677.26
CMTS Florida, LLC				
<i>Inspection services</i>	\$ 210,000.00	0.57	\$ 78,672.00	\$ 59,940.00
Registe Sliger Engineering, Inc.				
<i>Structural design</i>	\$ 9,898.58	0.03	\$ 8,017.85	\$ 6,137.12
PBS&J (Design Lead)				
<i>Design</i>	\$ 1,503,957.66	4.11	\$ 1,466,384.16	\$ 446,945.70
<hr/>				
Total Design Contract:	\$ 2,017,600.00	5.52%	\$ 1,812,289.27	\$ 533,700.08

Design MBE Goal:	\$ 312,728.00	15.50%
Design MBE to Date:	\$ 327,905.11	18.09%

E1 - CAPITAL CIRCLE SE – TRAM RD TO CONNIE DR

CONSTRUCTION:

**M. Inc. Contract including COT Water
 Utility Additional Work**

Total Construction Contract:
 \$34,579,352.49

Const. Invoiced to Date: \$20,183,143.66
 Const. MBE Invoice to Date:\$2,617,182.80

Construction			
MBE Goal:	\$	7,261,664.02	21.00%
Construction			
MBE to Date:			12.97%

Please Note: The state-wide certified MBE contractor, 'Gator Boring' has been removed from the City of Tallahassee's list of locally certified MBE firms (as of 2005). This resulted in the Gator's original contract amount of \$329,372.20 being removed from the construction MBE participation amount.

M. Inc. Contract

Total Construction Contract:
 \$29,132,815.28

Const. Invoiced to Date: \$16,124,619.85
 Const. MBE Invoice to Date:\$ 2,617,182.80

Construction			
MBE Goal:	\$	6,117,891.21	21.00%
Construction			
MBE to Date:			16.23%

Paving Operation on Tram Road



E1 - CAPITAL CIRCLE SE – TRAM RD TO CONNIE DR

Project Status:

Erosion Control and Clearing and Grubbing work is complete from Tram Road to north of Monday Street. COT Utility relocation permit has been obtained for all Segments. The EMP conditional permit for Segment 2 was granted on October 31, 2005. Segment 2B EMP permit conditions have been satisfied and full permit for Segment 2 is in effect as of April 20, 2006. Design of Segment 3 is complete and the final plans have been released for construction. The EMP permit for Segment 3 was issued on September 8, 2006 conditional upon permitting of Southwood drainage ponds WD 90/290. Southwood obtained the required permit on November 30, 2006. The permit for Segment 4 was obtained on June 8, 2006 and final plans for that Segment have been released for construction. Earthworks on Segment 3 are in progress. Utilities have been relocated on Segments 1 and 2 and relocation on Segments 3 and 4 is in progress. Work on re-use water line installation is in progress. Placement of COT Water Utility potable waterline and storm drainage system is complete between Tram Road and Blair Stone Road. Curb and gutter and structural asphalt have been placed on CCSE between Tram Road and Merchants Road Boulevard. Concrete curb and gutter, basecourse and structural asphalt were completed on northbound lanes between Merchants Row Boulevard and Blairstone Road at the beginning of July 2006. A section of Tram Road east of CCSE has been paved and opened to traffic on August 7, 2006. Curb and gutter and structural asphalt have been placed on south and north side of Tram Road west of CCSE. Clearing and grubbing on Segment 4 is in progress. Work on Pond 11 on Segment 4 is near completion. Grading on Segment 4 has been started. No major erosion control, safety, or maintenance of traffic issues to date.

The temporary traffic signals have been installed at Merchants Row intersection, some temporary striping put down, and northbound traffic has been switched over to two final CCSE northbound lanes between Tram Road and north of Blair Stone on November 6th. The DRB Meeting was held on November 14, 2006.

E1 - CAPITAL CIRCLE SE – TRAM RD TO CONNIE DR

Activities Since Last Period:

1. Final plans for Segment 3 have been completed and released for construction by Blueprint
2. Blueprint continued permitting coordination effort for Segment 3 ponds with Southwood and COT Growth Management. SouthWood obtained permit to build the ponds WD 90/290 on November 30, 2006
3. Curb and gutter and structural asphalt have been placed on the north side of Tram Road, west of CCSE
4. Hauling and compacting embankment material on Segment 3 continued
5. Work on meandering sidewalk between Drayton Drive and Blair Stone Road continued.
6. The DB Team coordinated utility relocation work on Segment 3 and 4
7. Grading of Pond 11 site in Segment 4 has been completed. Sod is being placed on the slopes
8. Traffic switched on Segment 2 as per phase 2A in November, 2006
9. The DRB meeting was held on December 12, 2006

Planned Activities for Next Period:

1. Conduct design progress and CEI meetings
2. Finalize coordination of street lighting design and materials with COT Electric Utility and FDOT
3. Finalize coordination of landscaping plans with the COT Streets and Drainage
4. Modify drainage design on Monday Street in the vicinity of De Soto Cemetery
5. CONSTRUCTION ACTIVITIES:
6. Continue placement of embankment and drainage structures on Segment 3 between Barcelona Lane and Hill Lane
7. Complete utility relocation on Segments 3 and 4
8. Finalize drainage pipes installation and road construction on Segment 1 - CCSE south of Tram Road
9. Continue road construction on Segments 1 and 2 to Merchants Row Boulevard until substantial completion
10. Continue Segment 4 construction and complete landscaping at Pond 11

Significant Issues and Resolutions:

ISSUE

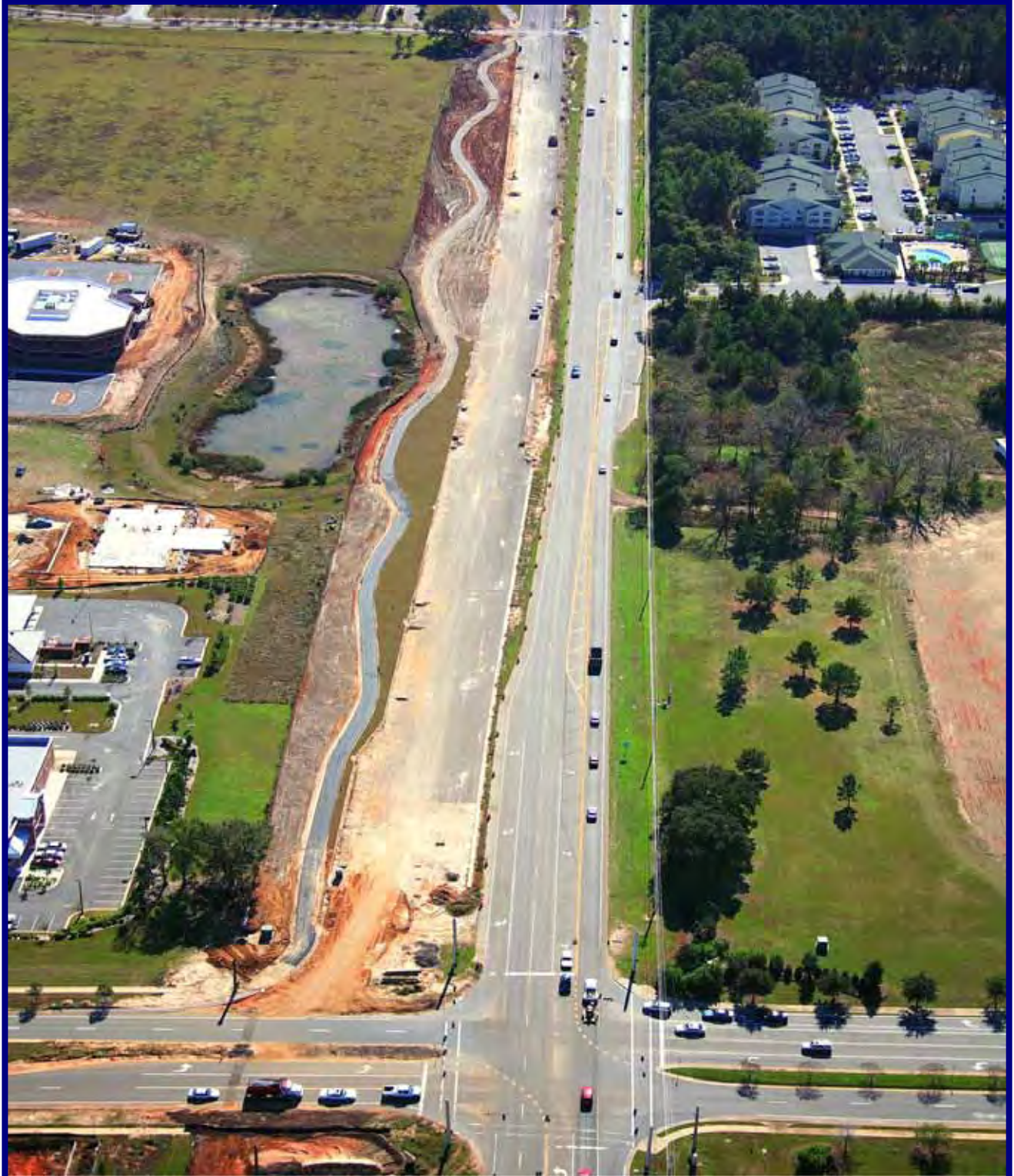
1. Right-of-way and easement issues with COT Electric Utility (north of Monday Street).
2. Permitting - Segment 3.

RESOLUTION

Re. pt.2: EMP permit conditions for Segment 3 are being coordinated with SouthWood and COT. Interim drainage easement south of Tram Road has been provided by SouthWood to facilitate EMP permit processing independently of the approval of Southwood SFMP by the City. SouthWood submitted ponds for Segment 3 permit application to Growth Management and received their comments. The comments have been addressed and the application re-submitted to GM on July 14, 2006. More comments were received from GM and were responded to by Southwood. Responses to the comments and the updated permit application plans were re-submitted to GM on November 13, 2006.

E1 - CAPITAL CIRCLE SE – TRAM RD TO CONNIE DR

CCSE At Blairstone Road Looking South



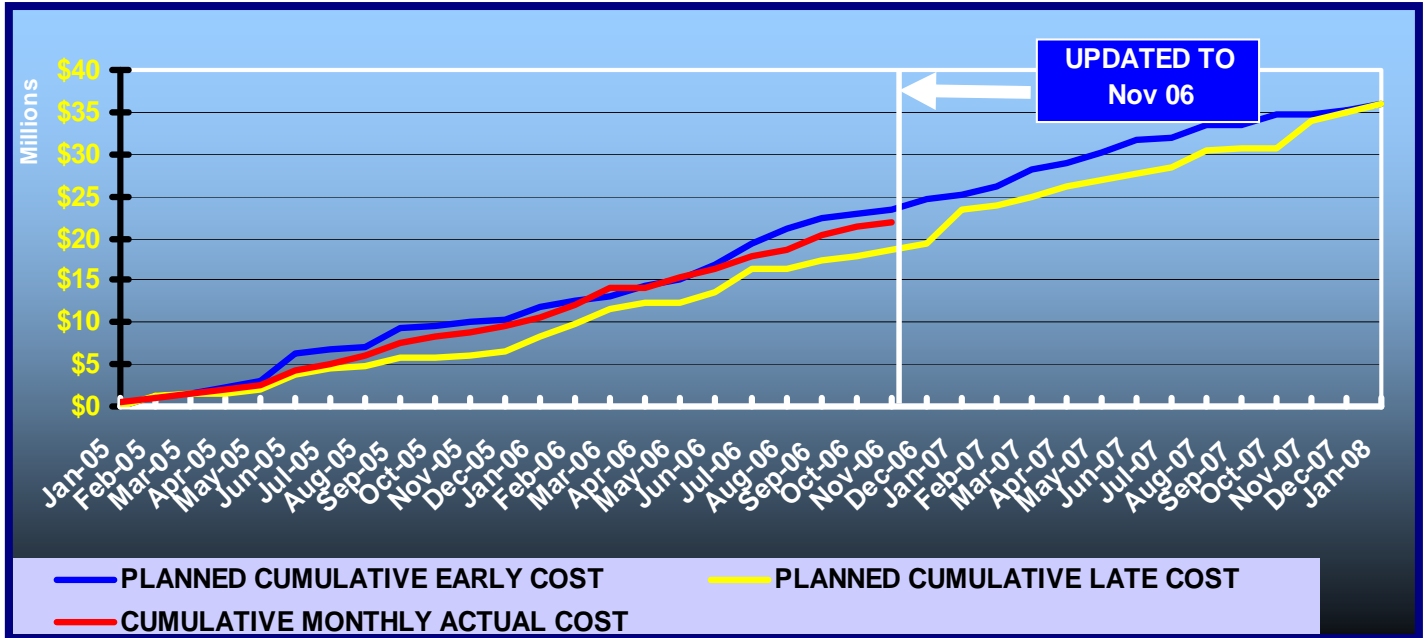
E1 - CAPITAL CIRCLE SE – TRAM RD TO CONNIE DR

CCSE Looking South From Drayton Drive to Merchant's Row

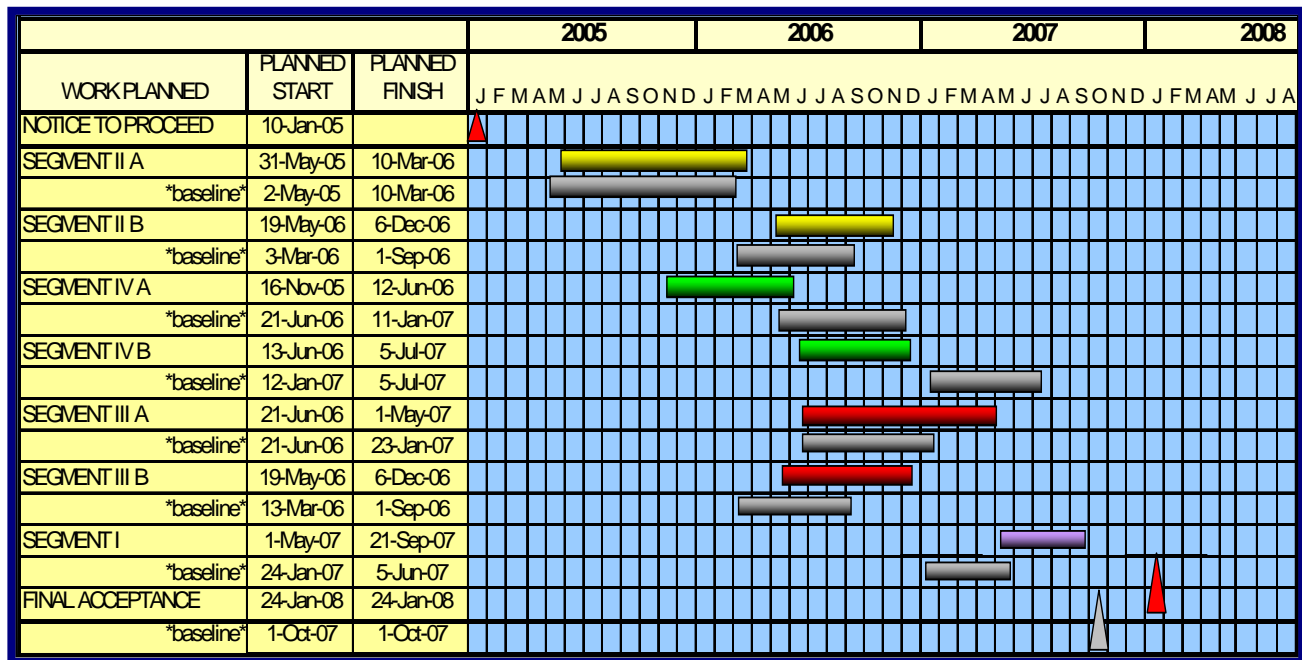


E1 - CAPITAL CIRCLE SE – TRAM RD TO CONNIE DR

DB Team Financial Summary of Planned vs. Actual Cost



Schedule



E1 - CAPITAL CIRCLE SE – TRAM RD TO CONNIE DR

Right-Of-Way Status Report:

CLOSED - (IN POSSESSION)	32
AGREEMENTS SECURED BUT NOT CLOSED	14
DONATION	14
NEGOTIATING/PREPARING FOR SUIT	0
TOTAL PARCELS ON PROJECT	60

- ◆ Tram Road and Capital Circle SE: All parcels have been acquired
- ◆ Tram Road and Capital Circle SE relocation issues: None
- ◆ Tram Road and Capital Circle SE property management issues: None

C2 - CAPITAL CASCADE TRAIL –SEGMENT 2 DESIGN

Project Description:

Within the Capital Cascade Trail, Segment 2 is from Lafayette Street to South Monroe Street

Project Personnel:

Blueprint 2000:	David Bright:	Planning Manager
	Gary Phillips:	Project Manager
Genesis:		
	Mark Llewellyn:	Project Manager

Contract Cost & Schedule Status - Agreement No. 533/Authorization LOA - As of 12/12/2006

Contract Commencement:	30May06
Contract Completion:	31Oct07
Percent of Work Performed:	32.0%
Original Contract Amount:	\$ 2,399,652.27
Executed Supplemental Agreements:	\$ 0.00
Pending Supplemental Agreements:	\$ 0.00
Current Contract Amount:	\$ 2,399,652.27
Invoiced to Date:	\$ 637,382.91
Remaining Contract Amount:	\$ 1,762,269.36
Percent of Contract Amount Complete:	26.6%
Original Contract Time:	519 Days
Contract Time Extensions:	0 Days
Current Contract Time:	519 Days
Contract Time Expended:	196 Days
Contract Time Remaining:	323 Days
Percent Contract Time Expended:	37.8%

Schedule Milestones:

Letter of Authorization	30May06
Submit Design Project Schedule	15Jun06
Workshop #1: Program Formation	27Jul06
Workshop #2: Design Selection	14Sep06
Plan Submittal - 50%	15Dec06
Plan Submittal - 90%	16Mar07
Final Plan submittal/Permitting Complete	31Oct07

C2 - CAPITAL CASCADE TRAIL – SEGMENT 2 DESIGN

Consultant Participation:	Contract Amt	% of Contract	ETD	YTD
Archaeological Consultants Inc. <i>Archaeological Services</i>	\$ 33,910.84	1.41	\$ 17,036.51	\$ 17,036.51
Environmental and Geotechnical Specialist <i>Geotechnical</i>	\$ 207,652.55	8.65	\$ 14,487.60	\$ 14,487.60
Akin Associates Architects <i>Architectural</i>	\$ 143,002.37	5.96	\$ 0.00	\$ 0.00
Moore Bass <i>Land Planning</i>	\$ 36,148.00	1.51	\$ 3,144.82	\$ 3,144.82
Uzzell Advertising <i>Public Relations</i>	\$ 15,562.61	0.65	\$ 14,062.61	\$ 14,062.61
Carr, Lynch, Sandell <i>Park Design</i>	\$ 135,550.00	5.65	\$ 91,606.54	\$ 91,606.54
Jennings Environmental <i>Environmental</i>	\$ 34,800.00	1.45	\$ 2,124.45	\$ 2,124.45
Pinnacle Engineering Group <i>MEP</i>	\$ 72,048.91	3.00	\$ 7,843.74	\$ 0.00
CDM <i>Stormwater</i>	\$ 141,230.00	5.89	\$ 47,635.14	\$ 47,635.14
Genesis Group <i>Prime</i>	\$ 1,580,054.00	65.85	\$ 439,441.50	\$ 447,285.24
<hr/>				
Total Contract:	\$ 2,399,959.28	100.00%	\$ 637,382.91	\$ 637,382.91

MBE Goal:	\$ 371,993.69	15.50%
MBE to Date:	\$ 48,731.54	7.65%

Project Status:

Letter of Authorization #5 and #6 were executed on March 9 and May 30, 2006, respectively. The two LOAs have been combined under Segment 2 Design and Permitting task for a total cost of \$2,399,959.28.

C2 - CAPITAL CASCADE TRAIL – SEGMENT 2 DESIGN

Project Status:

Letter of Authorization #5 and #6 were executed on March 9 and May 30, 2006, respectively. The two LOAs have been combined under Segment 2 Design and Permitting task for a total cost of \$2,399,652.27

Activities Since Last Period:

1. Continue to coordinate Utility Conflicts
2. Continue FEMA LOMR activities
3. Met with FDOT on preferred parking configuration
4. Revising Topographic Survey based on Blueprint comments
5. Submitted Draft Traffic Analysis Report and Interim Improvement Traffic Impact Study
6. Submitted Final CRAS to SHPO for review and approval
7. Submitted work area locations graphic with CSX. Setup field review with CSX for December 18, 2006
8. Continued working on interim improvement concepts for Segment I
9. Genesis will begin working on evaluating reducing the peak stage in the upper pond
10. Blueprint finalized Scope of Services for Lafayette Street Drainage Improvements with County
11. EGS submitted draft NFI to Blueprint for review and comment

Planned Activities for Next Period:

1. Blueprint will initiate supplemental design services with Genesis to add amenity design and new items contained in the Preferred Concept.
2. CDM will continue work on the FEMA LOMR
3. Genesis will complete and submit right-of-way boundary survey
4. CLS will complete and submit the Park Programming Report
5. Finalize FDOT Parking Reconfiguration (Options A and B)
6. EGS will complete the Electro Resistivity Analysis and initiate the soil borings in critical locations
7. Modify Draft Traffic Analysis based on comments received
8. Blueprint will negotiate with Genesis and subconsultants for additional design services for park amenities
9. Blueprint will negotiate scope and fee with Genesis for Lafayette Street Drainage Improvements.
10. Blueprint will develop and execute JPA associated with Lafayette Street improvements.
11. Blueprint will submit NFI to COT for review and approval

C2 - CAPITAL CASCADE TRAIL – SEGMENT 2 DESIGN

Right-Of-Way Status Report:

Capital Cascade Trail - Segment 2 - A city ordinance (Ordinance No. 06-O-69) abandoning Gadsden Street between Bloxham Street and CSX Railroad was approved by the City Commission on November 21, 2006. This abandonment helps to ensure that Segment 2 becomes a contiguous Park and is a user friendly Park.

Capital Cascade Trail - Segment 2 - Blueprint is in discussions with DEP to enter into a long term lease for the use of land within the boundary of the Park.

MAHAN DRIVE/US 90 – DEMPSEY MAYO ROAD TO I-10 (Tier 2 Blueprint Project)

Project Description:

This project is the reconstruction of the existing two-lane rural roadway to a four-lane urban roadway with bike lanes and sidewalks. The design is being performed by a consultant under FDOT's direction.

Project Status:

Survey: Initial work essentially completed and deliverables submitted.

Activities Since Last Period:

1. Survey: Initial work essentially completed
2. Geotechnical: Performed the roadway soil borings and submitted cores for laboratory analysis. will provide soil borings for the proposed mast arms at 90% plans
3. 60% Roadway Plans: Currently developing Phase II (60%) plans
4. Utilities: Received marked-up (30%) plans from the utility companies and have included the information in the Phase II (60%) Plans. Once 60% plans are completed, plans will be submitted for review. Due to the changes associated with the work effort for this project, and once the 60% review is completed and comments incorporated into the plans, to provide a conflict utility matrix to FDOT and the utility companies
5. Misc. Structure Plans: The design for mast arms will be performed, once the revised signalization sheets from Traffic Engineers have been developed.
6. Drainage Design: Finalizing the drainage design and will incorporate the design with the 60% submittal. Due to the Stewart Pond being added to the plan set, coordination with pond designer is underway to ensure no overlapping design work is being performed and that permit agencies are aware of adjoining permits
7. Environmental: Continuing to prepare the NFI and EIA. (QC underway)
8. Traffic Study: Queue lengths determined for turn lanes
9. Lighting Justification Report: The lighting plans to be included by COT
10. Community Awareness Plan: Public meeting will be scheduled after the holidays and 60% plans have been reviewed. Met with Vineyard Christian Church and Vineyard HOA on November 2, 2006
11. Signalization Plans: Revising/finalizing the work on the signalization plans
12. Signing and Pavement Marking Plans: Revising/finalizing the work on the signing and pavement marking plans

Planned Activities for Next Period:

1. Survey the punch list of outstanding survey items including the new construction at Thornton Road
2. Geotech to provide Roadway Soils Report
3. Continue to develop/revise the plans for Phase II (60%) submittal on December 21, 2006
4. Incorporate the utility information in the plans once the information is received
5. Finalize signalized intersection layout sheets
6. Finalize drainage plans for the Phase II (60%) submittal
7. Submit "draft" permit application documents with 60% submittal
8. Respond to meeting comments
9. Finish the signalization plans and submit internally for QC review
10. Finish the signing and pavement marking plans and submit internally for QC review

Schedule:

ACTIVITY	ACTUAL START DATE	SCHEDULED START DATE	ACTUAL SCHEDULED FINISHED DATE	ESTIMATED SCHEDULED FINISHED DATE
Design Survey	1/30/06	1/30/06	5/26/06	6/30/06
Bridge Survey	Only performing top of bridge deck, included with Design Survey			
Roadway Soils Report Phase	5/15/06	5/15/16	11/20/06	11/20/06
Prepare 30% Design Plans	3/13/06	3/13/06	7/31/06	7/31/06
Phase I Geotech Field Investigation	2/28/06	2/28/06	8/18/06	10/20/06
Phase I Geotech Lab Testing	3/28/06	3/28/06	8/18/06	11/18/06
Line and Grade Submittal	N/A	N/A	N/A	9/15/06
Prepare 60% Design Plans	8/1/06	8/1/06	10/23/06	11/21/06

OTHER

Sensitive Land Acquisitions

In conjunction with the Florida Communities Trust (FCT) Blueprint has begun discussions/negotiations with the owner of a 160 tract of land near the Headwaters of the St. Marks. This parcel is identified as "Booth II". Negotiations are on going and we anticipate the signing of an Option Agreement occurring in the very near future.

Headwaters of the St. Marks River

