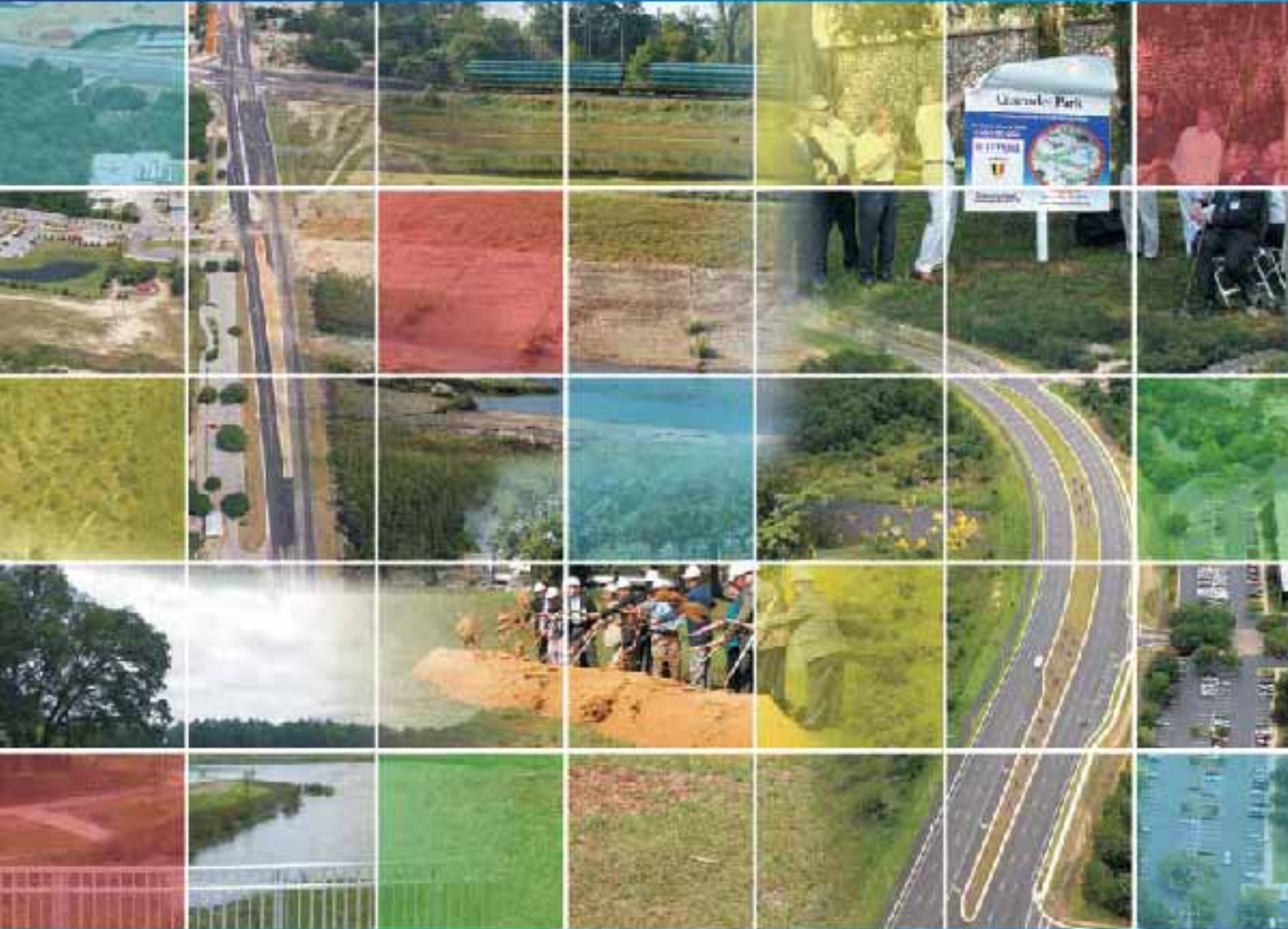


# Monthly Progress Report

## August 2010

Reporting Period July 12, 2010 to August 9, 2010



CITY OF TALLAHASSEE • LEON COUNTY  
**BLUEPRINT**  
INTERGOVERNMENTAL AGENCY **2000**

BLUEPRINT 2000  
1311 Executive Center Drive, Suite 109  
Koger Center, Ellis Building  
Tallahassee, Florida 32301



## TABLE OF CONTENTS

|  | <u>Page</u> |
|--|-------------|
| GEC – General Engineering Consultant .....                             | 1           |
| GEC – Public Involvement .....   | 5           |
| N1 - Capital Circle NW – I-10 to US 90 .....                           | 6           |
| N2 - Capital Circle NW/SW – SR 371 (Orange Avenue) to US 90 .....      | 7           |
| W1 - Capital Circle SW – Crawfordville Road to SR 20 .....             | 13          |
| E3 - Capital Circle SE – Woodville Highway to Crawfordville Road ..... | 17          |
| E2 - Capital Circle SE – Woodville Highway to Tram Road .....          | 18          |
| E1 - Capital Circle SE – Connie Drive to Tram Road.....                | 28          |
| C2 – Capital Cascade Trail – Segment 2 Design.....                     | 29          |
| C2 - Capital Cascade Trail – Segment 2 Construction.....               | 33          |
| C3 & C4 - Capital Cascade Trail – Segments 3 and 4 Design .....        | 40          |
| Acronym Glossary.....  | 45          |

## **GEC – GENERAL ENGINEERING CONSULTANT**

### **Project Description:**

General Engineering Consultant Contract for the Blueprint Intergovernmental Agency. The LPA GROUP INCORPORATED is the Prime Consultant with Jacobs Engineering Group, Incorporated as the major subconsultant. Twelve additional subconsultants, seven of which are M/WBE firms, make up the LPA/Jacobs Blueprint GEC Management Team.

### **Key Personnel:**

Program Manager: David Snyder – THE LPA GROUP INCORPORATED  
Design Manager: Jim Shepherd - Jacobs

### **Contract Cost & Schedule Status – Contract 597**

|                                      |                  |
|--------------------------------------|------------------|
| Original Contract Amount:            | \$ 21,944,716.00 |
| Fiscal Year Re-Authorization:        | \$ 3,456,852.00  |
| Executed Supplemental Agreements:    | \$ 0.00          |
| Pending Supplemental Agreements:     | \$ 0.00          |
| Current Contract Amount:             | \$ 25,401,568.00 |
| Invoiced to Date:                    | \$ 20,580,419.07 |
| Remaining Contract Amount:           | \$ 4,821,148.93  |
| Percent of Contract Amount Complete: | 81.0%            |

**GEC – GENERAL ENGINEERING CONSULTANT**

| <b>Subconsultant Participation:</b>   | <b>Contract Amt</b> | <b>% of GEC Contract</b> | <b>Expended To Date</b> | <b>FY To Date</b> |
|---|---------------------|--------------------------|-------------------------|-------------------|
| Moore Bass Consulting<br><i>Stormwater &amp; Landscaping</i>                                  | \$ 448,723.00       | 1.77                     | \$ 239,807.37           | \$ 17,038.50      |
| Pope Environmental<br><i>Environmental Services</i>   | \$ 454,276.00       | 1.79                     | \$ 221,716.92           | \$ 34,100.55      |
| OLH International<br><i>Program Controls</i>  | \$ 1,699,730.00     | 6.69                     | \$ 1,588,044.12         | \$ 0.00           |
| Beck Consulting Group<br><i>Government Relations</i>  | \$ 95,000.00        | 0.37                     | \$ 88,890.11            | \$ 51,916.55      |
| Quest Corporation of America<br><i>Public Involvement</i>                                     | \$ 1,127,180.00     | 4.44                     | \$ 1,018,021.82         | \$ 160,727.81     |
| Uzzell Advertising<br><i>Public Relations, Web Maint.</i>                                     | \$ 582,405.00       | 2.29                     | \$ 533,964.16           | \$ 49,879.00      |
| Welch & Ward Architects (no longer in business)<br><i>Architecture, Recreation Facilities</i> | \$ 25,000.00        | 0.10                     | \$ 13,737.00            | \$ 0.00           |
| THC Right-of-Way Services, Inc.<br><i>R/W appraisal and acquisition</i>                       | \$ 6,441,448.00     | 25.35                    | \$ 4,220,917.16         | \$ 646,671.90     |
| GPI Southeast<br><i>Survey and mapping</i>  | \$ 541,406.00       | 2.13                     | \$ 177,009.62           | \$ 0.00           |
| Weigal - Veasey<br><i>Property Appraisal</i>  | \$ 76,025.00        | 0.30                     | \$ 0.00                 | \$ 0.00           |
| Williams Earth Sciences<br><i>Geotechnical Services</i>                                       | \$ 85,000.00        | 0.33                     | \$ 23,773.46            | \$ 0.00           |
| Allen Nobles & Associates<br><i>Survey</i>  | \$ 95,000.00        | 0.37                     | \$ 127,123.84           | \$ 9,540.00       |
| THE LPA GROUP (PRIME)<br><i>Prime Consultant</i>  | \$ 7,779,563.00     | 30.62                    | \$ 7,643,435.23         | \$ 1,431,198.78   |
| JACOBS (PRIME SUB)<br><i>Prime Subconsultant</i>  | \$ 5,945,812.00     | 23.40                    | \$ 4,673,946.76         | \$ 685,372.92     |
| Wilderness Graphics<br><i>Signage</i>   | \$ 5,000.00         | 0.02                     | \$ 8,823.50             | \$ 3,823.50       |
| O'Neal Surveying<br><i>Surveying</i>  | \$ 5,031.50         | 0.02                     | \$ 1,208.00             | \$ 1,208.00       |
| <hr/>   |                     |                          |                         |                   |
| Total Contract:   | \$ 25,406,599.50    | 100.00%                  | \$ 20,580,419.07        | \$ 3,091,477.51   |

|              |                 |        |
|--------------|-----------------|--------|
| MBE Goal:    | \$ 3,938,022.92 | 15.50% |
| MBE to Date: | \$ 3,705,389.50 | 18.00% |

---

## **GEC – GENERAL ENGINEERING CONSULTANT**

### **Activities Since Last Period:**

1. Addressing construction issues as initial work commences at Cascade Park
2. Developed scope of services and design contract for Franklin Boulevard stormwater improvements
3. Held pre-proposal meeting for shortlisted firms for the Capital Cascade Connector Bridge
4. Working with COT Public Works on FAMU Way/CCT Segment 3 contiguous design
5. Continued coordination with LCSB and their consultants regarding Broadmoor Pond
6. Prepared “sole source package” for LPA regarding Franklin Boulevard project management
7. Weekly teleconference held for CCNW/SW (N-2) permitting issues
8. Pre-proposal meeting held in Chipley with shortlisted Design-Build firms for CCSE E-3

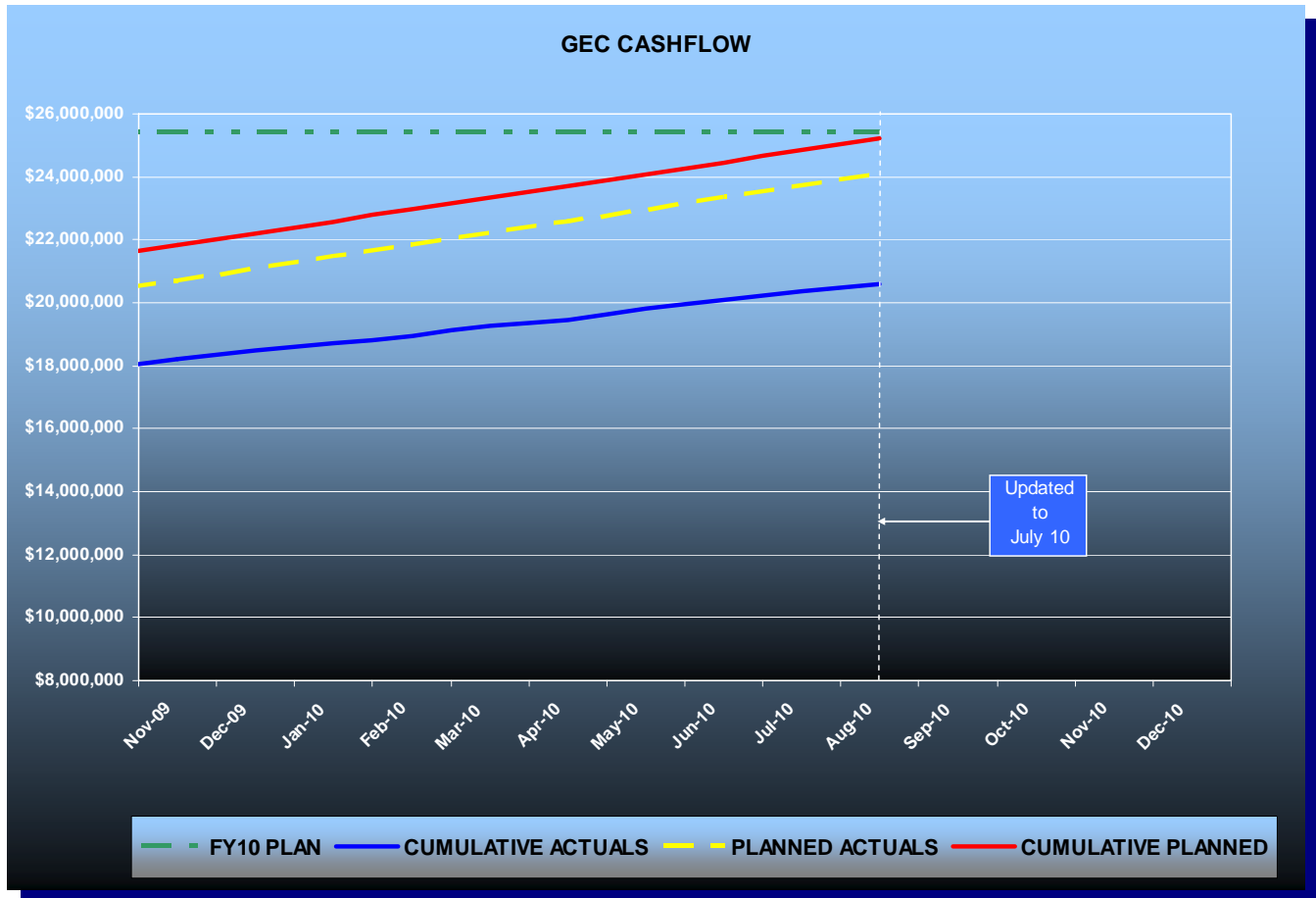
### **Planned Activities for Next Period:**

1. Begin preparation of contract for Design-Build project, attend Q&A meetings in early September for Capital Circle Southeast E3
2. Oral presentations set for August 25 on the Capital Cascade Connector Bridge project
3. Continue negotiations with the selected CEI firm for the CCSE-E3 project
4. Execute contract with design firm for the Franklin Boulevard stormwater improvements project
5. Monitor on-going contamination and clean up work at Cascade Park
6. Finalize Broadmoor Pond cost sharing issues with Leon County School Board
7. Continue with the FAMU Way Extension project assisting the COT Public Works as needed ★
8. Check inspection and documenting procedures on the Cascade Park project

*★Note: The FAMU Way Assignment to develop Construction and Right-of-Way cost estimates is not being funded with sales tax money*

**GEC – GENERAL ENGINEERING CONSULTANT**

**GEC Contract Financial Summary of Planned Vs. Actual Costs – FISCAL YEAR 2010**



## **GEC – PUBLIC INVOLVEMENT**

### **Activities Since Last Period:**

1. Continued to organize and hold Construction Public Meeting for CCT-2
2. Continued to organize and hold partnering meeting for CCT-2
3. Continued developing contact list for construction activities for CCT-2
4. Prepared presentation for College Leadership Tallahassee
5. Organized meeting with Leon High School Principal on CCT-1
6. Prepared press release regarding traffic switch for CCSE-E2

### **Planned Activities for Next Period:**

1. Organize and hold Construction Public Meeting for CCT-2
2. Organize and hold Informational Meetings for FDOT
3. Continue developing contact list for construction activities for CCT-2
4. Begin coordinating for Ribbon Cutting Ceremony on CCSE-E2
5. Prepare presentation for Old Timer's Club
6. Develop Public Information Plan for Franklin Boulevard project

## **N1 - CAPITAL CIRCLE NW – I-10 TO US 90**

### **Project Description - Roadway Contract:**

This 1.991-mile roadway project (FPID: 219722-1-52-01 & 02) consists of upgrading the existing undivided rural facility to a six-lane divided urban (curb and gutter) facility. Upgrades to the West Tennessee, Tharpe, Hartsfield and Commonwealth intersections are included. The purpose of the roadway improvement project is to increase the capacity and safety of the existing highway. The roadway project was designed, let and constructed by the Florida Department of Transportation, with advance funding provided by the Blueprint 2000 Intergovernmental Agency.

The CCNW-N1 Roadway Improvement Project was Final Accepted by FDOT on September 4, 2007.

### **Project Personnel:**

|                        |                             |              |
|------------------------|-----------------------------|--------------|
| <b>Blueprint 2000:</b> | <b>Project Manager:</b>     | David Snyder |
|                        | <b>CEI Constr. Manager:</b> | Marcus Kelly |
|                        | <b>CEI Administrator:</b>   | Joey Gordon  |

### **Project Description – Park Amenity and Landscaping Contract:**

A roadway landscaping and pond upgrading contract was issued by Blueprint 2000 on the CCNW-N1 project. Capital Circle medians from south of Tennessee Street to south of I-10 were landscaped, as well as the medians of several intersecting roads. Regional Stormwater Pond #1, later dedicated as the Martha Wellman Park, also received landscaping, a walking trail and numerous park amenities.

The CCNW-N1 Roadway Improvements Project, from West Tennessee St. to Commonwealth Blvd. (with FDOT) was Final Accepted on September 4th, 2007. The Total Construction Cost, including \$1,259,912 of JPA utility-work with COT, was \$25,364,081.84

The CCNW-N1 Park Amenities and Landscaping Project (later named Martha Wellman Park) was Final Accepted by Blueprint 2000 on June 26, 2009. The total Construction Cost was \$1,055,653.37.

The Total Right-of-Way Costs for these projects was \$46,374,947.00



**N2 - CAPITAL CIRCLE NW/SW – SR 371 (ORANGE AVE.) TO US 90**

**Project Description:**

The Expanded Project Development and Environmental (PD&E) Study limits for this 2.9 mile project extend from Tennessee Street (US 90/SR 10) to Orange Avenue (SR 371). The purpose of this roadway improvement project is to increase the capacity and safety of the existing highway by expanding the existing two-lane undivided rural roadway to a six-lane divided urban (curb and gutter) facility. New traffic signals will be provided at Orange Avenue, Blountstown Highway and Gum Road Intersections. The project also includes significant landscaping as well as pedestrian, bicycle and recreational amenities. This project will develop final design plans for construction.

**Project Personnel:**

|                        |                              |               |
|------------------------|------------------------------|---------------|
| <b>Blueprint 2000:</b> | <b>Program Manager:</b>      | David Snyder  |
|                        | <b>Construction Manager:</b> | Marcus Kelly  |
|                        | <b>Project Manager:</b>      | Latesa Turner |
| <b>H.W. Lochner:</b>   | <b>Project Manager:</b>      | Hugh Williams |

**Contract Cost & Schedule Status - Agreement No. 772/Authorization 1 - As of 8/09/2010**

|                                      |                 |
|--------------------------------------|-----------------|
| Contract Commencement:               | 10May04         |
| Contract Completion:                 | 31Dec10         |
| Percent of Work Performed:           | 96.0%           |
| <br>                                 |                 |
| Original Contract Amount:            | \$ 1,921,585.90 |
| Executed Supplemental Agreements:    | \$ 3,933,475.05 |
| Pending Supplemental Agreements:     | \$ 0.00         |
| Current Contract Amount:             | \$ 5,855,060.95 |
| Invoiced to Date:                    | \$ 5,355,168.14 |
| Remaining Contract Amount:           | \$ 499,892.81   |
| Percent of Contract Amount Complete: | 91.5%           |
| <br>                                 |                 |
| Original Contract Time:              | 1095 Days       |
| Contract Time Extensions:            | 1331 Days       |
| Current Contract Time:               | 2426 Days       |
| Contract Time Expended:              | 2282 Days       |
| Contract Time Remaining:             | 144 Days        |
| Percent Contract Time Expended:      | 94.1%           |

**N2 - CAPITAL CIRCLE NW/SW – SR 371 (ORANGE AVE.) TO US 90**

**Schedule Milestones:**

|  |         |
|--|---------|
| Final Environmental Documents  | 20Jun06 |
| Final Preliminary Engineering Report   | 20Jun06 |
| Location Design Concept Approval (LDCA)  | 22Aug06 |
| 30% Roadway Plans  | 28Aug06 |
| VE Complete  | 27Oct06 |
| 2nd Draft ROW Maps   | 30Apr07 |
| Final ROW Maps   | 30Sep07 |
| 60% Roadway Plans  | 01Nov07 |
| 90% Roadway Plans  | 08Aug08 |
| 60% Structures (CSX Railroad Bridge, Gum Creek Bridge and Retaining Walls) Plans | 15Jan09 |
| 90% Structures (CSX Railroad Bridge, Gum Creek Bridge and Retaining Walls) Plans | 13Feb09 |
| 100% Roadway and Structures Plans  | 16Jul09 |
| Pre-Final Plans (US 90 to Orange)  | 18Dec09 |
| Pre-Final Plans (US 90 to North of SR 20)  | 09Sep10 |
| Final Plans (US 90 to North of SR 20)  | 15Oct10 |

| <b>Design Subconsultant Participation:</b>              | <b>Contract Amt</b>    | <b>% of Design Contract</b> | <b>Expended To Date</b> | <b>FY To Date</b>    |
|---|------------------------|-----------------------------|-------------------------|----------------------|
| <b>Environmental Geotechnical Specialists</b>           |                        |                             |                         |                      |
| <i>Geotechnical</i>                                     | \$ 574,866.25          | 9.82                        | \$ 562,839.90           | \$ 0.00              |
| <b>Diversified Design &amp; Drafting Services, Inc.</b> |                        |                             |                         |                      |
| <i>Survey and R/W Mapping</i>                           | \$ 820,349.64          | 14.01                       | \$ 773,649.20           | \$ 0.00              |
| <b>Archaeological Consultants, Inc.</b>                 |                        |                             |                         |                      |
| <i>Cultural Resource Assessment</i>                     | \$ 24,093.51           | 0.41                        | \$ 24,093.51            | \$ 0.00              |
| <b>HNTB/TEI</b>   |                        |                             |                         |                      |
| <i>Traffic Analysis</i>                                 | \$ 90,310.59           | 1.54                        | \$ 90,310.59            | \$ 0.00              |
| <b>American Acquisition Group</b>                       |                        |                             |                         |                      |
| <i>Right of Way</i>                                     | \$ 97,873.48           | 1.67                        | \$ 94,046.22            | \$ 0.00              |
| <b>HW LOCHNER (PRIME)</b>                               |                        |                             |                         |                      |
| <i>Prime Consultant</i>                                 | \$ 4,030,913.05        | 68.84                       | \$ 3,613,546.07         | \$ 128,705.93        |
| <b>PBS&amp;J</b>  |                        |                             |                         |                      |
| <i>Landscape</i>  | \$ 159,219.43          | 2.72                        | \$ 143,462.65           | \$ 0.00              |
| <b>CDM</b>  |                        |                             |                         |                      |
| <i>Stormwater Modeling</i>                              | \$ 57,435.00           | 0.98                        | \$ 53,220.00            | \$ 0.00              |
| <b>Total Design Contract:</b>                           | <b>\$ 5,855,060.95</b> | <b>99.99%</b>               | <b>\$ 5,355,168.14</b>  | <b>\$ 128,705.93</b> |

|                            |                        |               |
|----------------------------|------------------------|---------------|
| <b>Design MBE Goal:</b>    | <b>\$ 907,534.45</b>   | <b>15.50%</b> |
| <b>Design MBE to Date:</b> | <b>\$ 1,360,582.61</b> | <b>25.41%</b> |

## **N2 - CAPITAL CIRCLE NW/SW – SR 371 (ORANGE AVE.) TO US 90**

### **Project Status:**

Pre-Final plans for the full Capital Circle NW/SW (SR 263) project improvements from Orange Avenue (SR 371) to Tennessee Street (US 90) were submitted in December 2009. Right-of-Way acquisition, utility coordination and environmental permitting activities based on the full project are ongoing and nearing completion. Blueprint has authorized H.W. Lochner to modify the plans and permits to construct the portion of the project from north of Blountstown Highway (SR 20) to Tennessee Street (US 90) based on available construction funding.

### **Activities Since Last Period:**

1. Authorization to proceed with Supplemental Agreement for revision of the plans was provided to Lochner
2. Submitted preliminary roadway and drainage plans on July 27th for Capital Circle transition realignment north of SR 20 to Moore Circle
3. Commenced work on design of the Broadmoor wetland mitigation site. Collected survey, environmental and geotechnical data. Preliminary layout submittal is scheduled for August 16th
4. Continued coordination with Leon County Growth Management, the Florida Department of Environmental Protection (FDEP), and the Army Corps of Engineers (ACOE) on permitting.
5. Met with Army Corps of Engineers on July 28th. ACOE issued a notice of intent to permit the full project on July 28th
6. Commenced coordination with FDEP and ACOE on permit modifications for the shortened project. Construction of all or part of the Delta Mitigation site will be required for the permit modification for the shortened project
7. Prepared for August 9th utility coordination meeting
8. Continued coordination with Leon County School Board (LCSB) on Joint Project Agreement for Broadmoor pond and conveyance construction
9. Continued coordination with the City of Tallahassee Underground Utility Department on the Joint Project Agreement and Utility Contract Plans for the water and sewer work

### **Planned Activities for Next Period:**

1. Continue resolution of permitting items. Respond to August 6th request for additional information on the Leon County Environmental Management Permit
2. Complete coordination with COT and FDEP on the Delta Mitigation Area conservation easement
3. Complete the preliminary Broadmoor mitigation site design and submit for review
4. Continue development of concepts for the permit modifications related to the Delta mitigation site
5. Conduct utility coordination meeting on August 9th. Continue project utility coordination and development of revised Utility plans for the shortened project
6. Continue plans development for Pre-Final Plans submittal on September 9th
7. Finalize coordination with LCSB for N2 roadway and drainage improvements and development of their planned facilities. Prepare draft Joint Project Agreement

---

## **N2 - CAPITAL CIRCLE NW/SW – SR 371 (ORANGE AVE.) TO US 90**

### **Significant Issues and Resolutions:**

#### ISSUE

Complete outstanding permit and utility issues.

#### RESOLUTION

Finalizing the FDEP conservation easement for the Delta Mitigation Site. The Notice of Intent to Permit the full project was issued on 4/30/10. Final permit issuance pending.

Based on recent coordination with Leon County and FDEP staff, the southern end of the Broadmoor Estates property will be evaluated to provide mitigation in lieu of the wetland creation proposed at the Gum Road site in order to facilitate the County's future expansion of the Gum Road floodplain storage area per the 2002 Gum Road Target Area Master Plan. Design of the Broadmoor wetland mitigation site is underway.

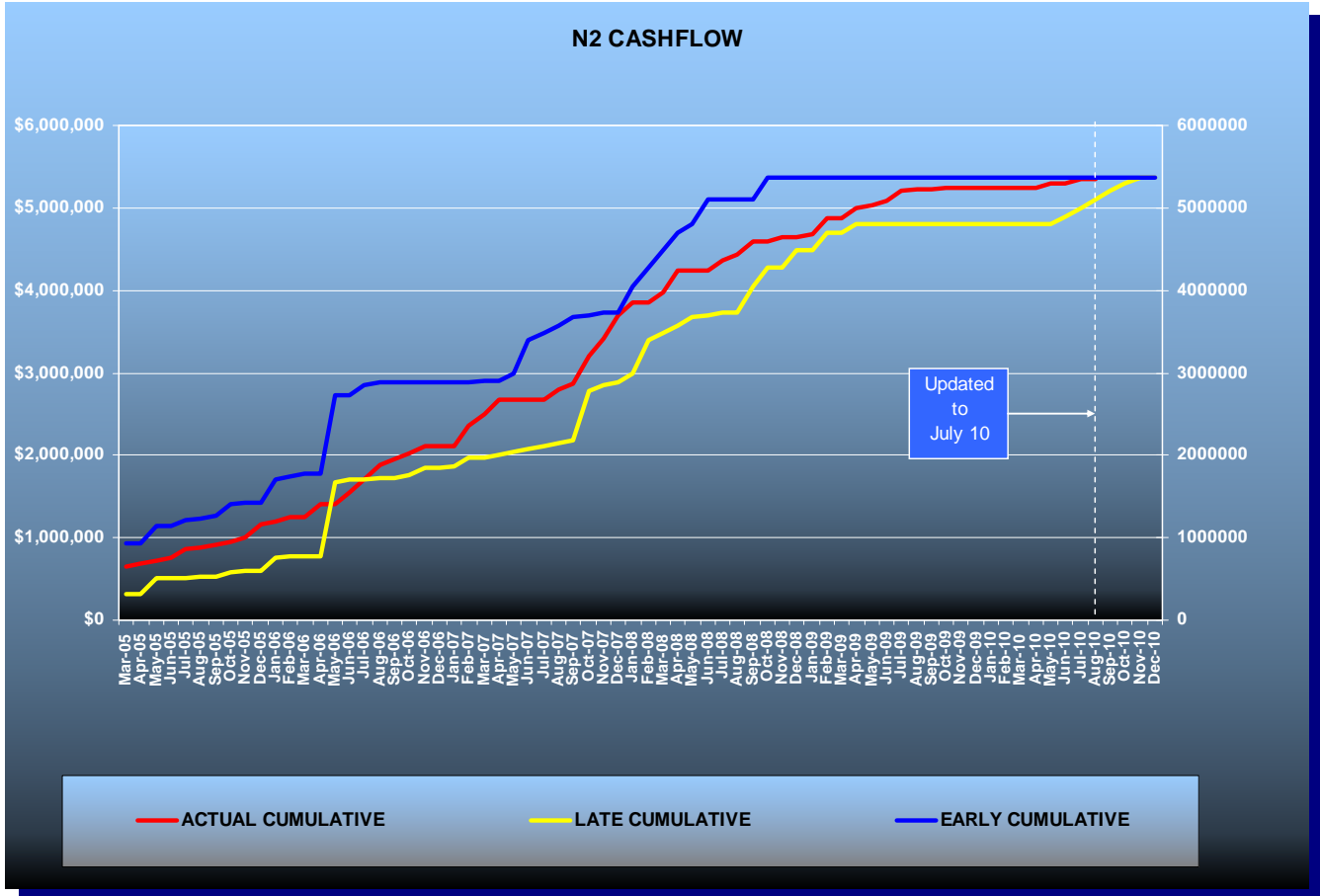
Corps of Engineers issued a Notice of Intent to permit the full project. Issuance of the final permit pending the release of FDEP Wetland Resource Permit.

Meetings were held with ACOE and FDEP staff to commence coordination on the permit modifications for the shortened project.

The Leon County EIA/EMP is currently under review. Lochner to respond to final round of comments this period.

**N2 - CAPITAL CIRCLE NW/SW – SR 371 (ORANGE AVE.) TO US 90**

**Contract Financial Summary of Planned Vs. Actual Costs**



---

**N2 - CAPITAL CIRCLE NW/SW – SR 371 (ORANGE AVE.) TO US 90**

**Right-Of-Way Status Report:**

|                                   |    |
|-----------------------------------|----|
| IN POSSESSION                     | 85 |
| AGREEMENTS SECURED BUT NOT CLOSED | 3  |
| NEGOTIATING/PREPARING FOR SUIT    | 0  |
| TOTAL PARCELS ON PROJECT          | 88 |
| DONATIONS                         | 2  |

**W1 - CAPITAL CIRCLE SW – CRAWFORDVILLE ROAD TO SR 20**

**Project Description:**

A Project Development and Environmental (PD&E) Study will be conducted for this portion of Capital Circle (SR 263) between Crawfordville Road (SR 61/US 319) and Blountstown Highway (SR 20); a distance of approximately 6.7 miles. The PD&E study will be conducted in accordance with Federal Highway Administration (FHWA), Blueprint 2000 Agency, and Florida Department of Transportation (FDOT) guidelines. The study will evaluate alternative alignments as well as the existing alignment. Several viable alternatives will be developed and evaluated in order to address the project needs while taking into account the Blueprint 2000 & Beyond “Project Definitions Report”, prepared by the Economic and Environmental Consensus Committee in 1999, and the Lake Bradford Sector Plan, conducted by the Tallahassee/Leon County Planning Department.

**Project Personnel:**

|                                  |                          |               |
|----------------------------------|--------------------------|---------------|
| <b>Blueprint 2000:</b>           | <b>Planning Manager:</b> | Dave Bright   |
|                                  | <b>Project Manager:</b>  | Latesa Turner |
| <b>Kimley-Horn &amp; Assoc.:</b> | <b>Project Manager:</b>  | Steve Godfrey |

**Contract Cost & Schedule Status - Agreement No. 1284/Authorization 1 - As of 8/9/2010**

|                                      |                 |
|--------------------------------------|-----------------|
| Contract Commencement:               | 22Aug06         |
| Contract Completion:                 | 30Apr12         |
| Percent of Work Performed:           | 95.0%           |
| <br>                                 |                 |
| Original Contract Amount:            | \$ 2,672,271.68 |
| Executed Supplemental Agreements:    | \$ 40,372.06    |
| Pending Supplemental Agreements:     | \$ 0.00         |
| Current Contract Amount:             | \$ 2,712,643.74 |
| Invoiced to Date:                    | \$ 2,555,856.41 |
| Remaining Contract Amount:           | \$ 156,787.33   |
| Percent of Contract Amount Complete: | 94.2%           |
| <br>                                 |                 |
| Original Contract Time:              | 1096 Days       |
| Contract Time Extensions:            | 982 Days        |
| Current Contract Time:               | 2078 Days       |
| Contract Time Expended:              | 1448 Days       |
| Contract Time Remaining:             | 630 Days        |
| Percent Contract Time Expended:      | 69.7%           |

**Schedule Milestones:**

|   |         |
|---|---------|
| Consultant Selected                     | 26May06 |
| Study Begins                            | 22Aug06 |
| Agency Kick-off Meeting                 | 19Oct06 |
| Public Kick-off Meeting                 | 19Oct06 |
| Community Mini-Charrettes               | 15Jan07 |
| Community Meeting                       | 12Apr07 |
| Corridor/Concepts Charrette             | 10May07 |
| Interim Public Meeting                  | 06Nov07 |
| Alternatives Public Information Meeting | 13Nov08 |
| Preferred Alternative Public Meeting    | 13Aug09 |
| Public Hearing                          | TBD     |

**W1 - CAPITAL CIRCLE SW – CRAWFORDVILLE ROAD TO SR 20**

| <b>Design Subconsultant Participation:</b>                      | <b>Contract Amt</b>    | <b>% of Design Contract</b> | <b>Expended To Date</b> | <b>FY To Date</b>    |
|---|------------------------|-----------------------------|-------------------------|----------------------|
| Target Copy and Sign Printers<br><i>Printing</i>                | \$ 30,000.00           | 1.11                        | \$ 29,818.54            | \$ 0.00              |
| Keystone Field Services<br><i>Relocation</i>                    | \$ 35,000.00           | 1.29                        | \$ 35,000.00            | \$ 0.00              |
| Environmental and Geotechnical Specialists<br><i>Geotech</i>    | \$ 127,874.94          | 4.71                        | \$ 96,141.96            | \$ 14,051.17         |
| Diversified Design & Drafting Services<br><i>Survey</i>         | \$ 31,840.00           | 1.17                        | \$ 31,840.00            | \$ 0.00              |
| StategyWise, LLC<br><i>Economic Development</i>                 | \$ 0.00                | 0.00                        | \$ 0.00                 | \$ 0.00              |
| Hamilton Smith Assoc.<br><i>Traffic</i>                         | \$ 18,600.00           | 0.69                        | \$ 18,600.00            | \$ 0.00              |
| Registe, Sliger Engineering<br><i>Structures</i>                | \$ 123,376.71          | 4.55                        | \$ 105,857.02           | \$ 31,461.07         |
| KIMLEY-HORN & ASSOC (PRIME)<br><i>Prime</i>                     | \$ 1,742,867.26        | 64.25                       | \$ 1,660,214.05         | \$ 98,543.63         |
| Dr. Wayson<br><i>Noise</i>                                      | \$ 0.00                | 0.00                        | \$ 0.00                 | \$ 0.00              |
| Hass Center<br><i>Economic Development</i>                      | \$ 37,200.00           | 1.37                        | \$ 37,200.00            | \$ 0.00              |
| Florida Acquisition & Appraisal<br><i>Appraisal/Acquisition</i> | \$ 200,804.91          | 7.40                        | \$ 200,804.93           | \$ 0.00              |
| Biological Research Assoc.<br><i>Water Quality</i>              | \$ 105,815.50          | 3.90                        | \$ 105,815.50           | \$ 12,726.06         |
| Search, Inc<br><i>Cultural Resource/Archaeological</i>          | \$ 71,444.42           | 2.63                        | \$ 48,444.06            | \$ 37,678.71         |
| Camp, Dresser & McKee<br><i>Drainage &amp; Pond Design</i>      | \$ 187,820.00          | 6.92                        | \$ 186,120.35           | \$ 5,630.99          |
| <b>Total Design Contract:</b>                                   | <b>\$ 2,712,643.74</b> | <b>100.00%</b>              | <b>\$ 2,555,856.41</b>  | <b>\$ 200,091.63</b> |

|                            |                      |               |
|----------------------------|----------------------|---------------|
| <b>Design MBE Goal:</b>    | <b>\$ 367,563.23</b> | <b>13.50%</b> |
| <b>Design MBE to Date:</b> | <b>\$ 317,257.52</b> | <b>12.41%</b> |



## **W1 - CAPITAL CIRCLE SW – CRAWFORDVILLE ROAD TO SR 20**

### **Project Status:**

Kimley-Horn and Associates began the Capital Circle Southwest PD&E study in late August 2006. The Public and Agency Kickoff Meetings were conducted in October 2006. Six Community Forum Meetings were conducted concluding with a Town Hall Meeting held in April 2007. The Concept Charrettes were held on May 10th and 12th, 2007. The Intergovernmental Agency (IA) approved the evaluation criteria and the criteria weighting that will be used to evaluate the alternative alignments. An Interim Public Meeting was held on November 6, 2007 to present the status of the project since the Concepts Charrette. The project began the analysis phase using the alternative alignments established through the Concept Charrette process. An Alternatives Public Meeting was held on November 13, 2008 to present the results of the evaluations conducted for the alternative alignments within the four corridor segments. Based on the results of the analyses and input received from the public at the Alternatives Meeting, recommendations were made regarding the best alternative for each segment, and these recommendations were approved by the Intergovernmental Agency on February 23, 2009. The approved segment solutions have been combined to form an Existing Alignment (Widening) Alternative and a Realignment Alternative. These two "Build" alternatives were evaluated, along with the "No-Build" alternative, using the 13 evaluation criteria and associated weightings established by the IA. The results of these evaluations were presented to the public at the Preferred Alternatives Meeting on August 13, 2009. The IA approved staff's recommendation to widen the existing alignment with commitments to protect the environment and to investigate improvements to the West Ditch, Grassy Lake and Black Swamp area at the September 21, 2009 IA meeting. Seventeen Community Representatives meetings have been held through the month of June 2010.

### **Activities Since Last Period:**

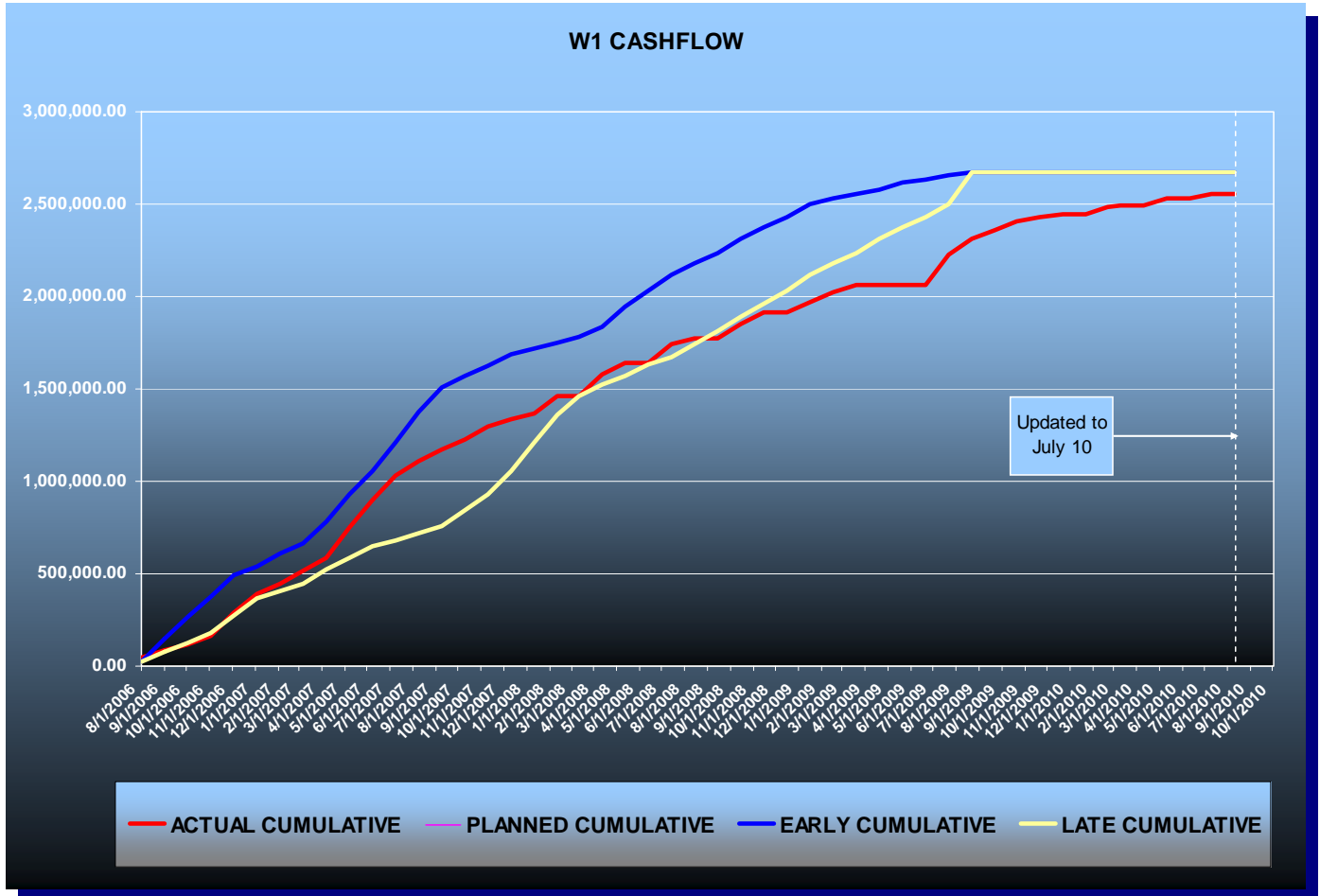
1. Reviewed draft Concept Plans comments from Blueprint. Began developing responses and adjustments to the plans to address comments
2. Submitted revised Typical Section Package to FDOT for approval
3. Submitted the draft Natural Features Inventory for Blueprint review
4. Continued coordination with Blueprint, FDOT and FHWA/SHPO on Cultural Resource Assessment comments

### **Planned Activities for Next Period:**

1. Continue to prepare for a Fall Public Hearing and the final Community Representatives meeting
2. Prepare for stakeholder meetings, as necessary (ie. with the Airport, FSU , St. Joe, US Forest Service, etc.)
3. Revise draft Concept Plans for the Preferred Alignment and submit
4. Prepare and submit Section 4(f) Determination of Applicability
5. Finalize Scope and Fee for the West Ditch analysis initial effort of data collection and stakeholder meetings. Begin data collection efforts and schedule/attend stakeholder meetings

**W1 - CAPITAL CIRCLE SW – CRAWFORDVILLE ROAD TO SR 20**

**Contract Financial Summary of Planned Vs. Actual Costs**



## **E3 - CAPITAL CIRCLE SE – WOODVILLE HIGHWAY TO CRAWFORDVILLE ROAD**

### **Project Description:**

This project proposes to widen approximately 1.53 miles of the existing two-lane Capital Circle SE from Woodville Highway to Crawfordville Road to a multi-lane urban facility.

FDOT Roadway ID: 55002000, SR 263 from MP 0.200 to MP 1.730

In 2006/2007, URS prepared 60% design plans for Blueprint at a cost of \$996,151.54. URS had an M/WBE participation of 16%. The preparation of 60% design plans was part of Blueprint's strategy to be ready for construction if funding became available.

### **Project Personnel:**

|                        |                                      |                  |
|------------------------|--------------------------------------|------------------|
| <b>Blueprint 2000:</b> | <b>Design Project Manager:</b>       | Gary Phillips    |
|                        | <b>Design-Build Project Manager:</b> | Marek Romanowski |
|                        | <b>Construction Manager:</b>         | Marcus Kelly     |

### **Project Status:**

#### **Design-Build**

Blueprint began, but had to cancel the procurement process. FDOT has assumed the procurement duties for this project. FDOT has reduced the available stimulus funding for the project from \$13.7 million to \$10.5 million. Blueprint will manage the project once the contract is awarded.

#### **CEI**

PBS&J was ranked #1 to provide the Construction Engineering and Inspection (CEI) for the project

### **Right-Of-Way Status Report:**

Right-of-Way maps are at 100%. Blueprint is in the position to begin acquiring Right-of-Way as funding becomes available.

The Highway Easement Deed for Parcel 800 was issued by the Federal Highway Administration to the Florida Department of Transportation on January 16, 2009.

**E2 - CAPITAL CIRCLE SE – WOODVILLE HIGHWAY TO TRAM ROAD**

**Project Description:**

This project proposes to widen approximately 2.3 miles of the existing two-lane Capital Circle SE from Woodville Highway to Tram Road to an ultimate six-lane facility, mileposts 0.0 to 2.12. In addition, a transitional segment west of Woodville Highway (SR 263, MP 0.0 to approximately MP 0.2) will be included. The purpose of the roadway improvement project is to increase the capacity and safety of the existing highway. A new traffic signal will be installed at the access to the Lakes at San Marcos development on Woodville Highway, south of CCSE. Provisions for future traffic signals will be provided at three intersections: Paul Russell Road, Southchase Boulevard and SouthWood Marketplace Drive to accommodate proposed developments on the north side of CCSE, between Woodville Highway and Tram Road. The project includes significant landscaping as well as pedestrian, bicycle and recreational amenities.

**Project Personnel:**

|                             |                                |                  |
|-----------------------------|--------------------------------|------------------|
| <b>Blueprint 2000:</b>      | <b>Program Manager:</b>        | David Snyder     |
|                             | <b>Project Manager:</b>        | Marek Romanowski |
|                             | <b>Construction Manager:</b>   | Marcus Kelly     |
| <b>Sandco Inc./Genesis:</b> | <b>Project Manager:</b>        | Bob Myrick       |
|                             | <b>Design Project Manager:</b> | Jim Sullivan     |

**Contract Cost & Schedule Status - Agreement No. 1464 - As of 8/9/2010**

|                                      |                  |
|--------------------------------------|------------------|
| Contract Commencement:               | 28Aug07          |
| Contract Completion:                 | 13Feb10          |
| Percent of Work Performed:           | 89.9%            |
| Original Contract Amount:            | \$ 17,616,609.90 |
| Executed Supplemental Agreements:    | \$ 1,306,416.20  |
| Pending Supplemental Agreements:     | \$ 0.00          |
| Current Contract Amount:             | \$ 18,923,026.10 |
| Invoiced to Date:                    | \$ 17,014,479.06 |
| Remaining Contract Amount:           | \$ 1,908,547.04  |
| Percent of Contract Amount Complete: | 89.9%            |
| Original Contract Time:              | 900 Days         |
| Contract Time Extensions:            | 242 Days         |
| Current Contract Time:               | 1142 Days        |
| Contract Time Expended:              | 1079 Days        |
| Contract Time Remaining:             | 63 Days          |
| Percent Contract Time Expended:      | 94.5%            |

**Schedule Milestones:**

|                                |         |
|--------------------------------|---------|
| Contract with DB Team executed | 05Jun07 |
| Notice To Proceed              | 28Aug07 |
| Groundbreaking Ceremony        | 29Aug07 |
| Project Final Completion Date  | 12Oct10 |

**E2 - CAPITAL CIRCLE SE – WOODVILLE HIGHWAY TO TRAM ROAD**

| Design Subconsultant Participation:    | Contract Amt    | % of Design Contract | Expended To Date | FY To Date   |
|--|-----------------|----------------------|------------------|--------------|
| <b>EGS</b>                             |                 |                      |                  |              |
| <i>Environmental Engineering</i>       | \$ 385,218.29   | 24.43                | \$ 385,218.29    | \$ 58,341.96 |
| Mehta & Associates, Inc.               |                 |                      |                  |              |
| <i>Design Survey</i>                   | \$ 44,000.00    | 2.79                 | \$ 44,000.00     | \$ 0.00      |
| Genesis Group                          |                 |                      |                  |              |
| <i>Prime Consultant of Design Team</i> | \$ 1,147,296.86 | 72.77                | \$ 1,147,296.86  | \$ 35,000.00 |
| <hr/>                                  |                 |                      |                  |              |
| Total Design Contract:                 | \$ 1,576,515.15 | 100.00%              | \$ 1,576,515.15  | \$ 93,341.96 |

|                       |               |        |
|-----------------------|---------------|--------|
| Design M/WBE Goal:    | \$ 244,359.85 | 15.50% |
| Design M/WBE to Date: | \$ 429,218.29 | 27.23% |

| Construction Subconsultant Participation: | Contract Amt     | % of Design Contract | Expended To Date | FY To Date      |
|---|------------------|----------------------|------------------|-----------------|
| <b>Florida Developers</b>                 |                  |                      |                  |                 |
| <i>Earthwork, Trucking, Drainage</i>      | \$ 1,071,423.62  | 6.18                 | \$ 1,071,423.62  | \$ 433,060.41   |
| Gains & Sons                              |                  |                      |                  |                 |
| <i>Striping</i>                           | \$ 123,316.27    | 0.71                 | \$ 102,788.04    | \$ 78,099.70    |
| Hawthorn Construction                     |                  |                      |                  |                 |
| <i>Curb &amp; Gutter, Concrete Work</i>   | \$ 1,170,903.15  | 6.75                 | \$ 1,170,903.15  | \$ 614,971.64   |
| Ingram Signalization Inc.                 |                  |                      |                  |                 |
| <i>Signalization</i>                      | \$ 639,600.00    | 3.69                 | \$ 639,600.00    | \$ 639,600.00   |
| Tallahassee Contractors                   |                  |                      |                  |                 |
| <i>Trucking, Limerock Base</i>            | \$ 746,225.89    | 4.30                 | \$ 560,449.79    | \$ 0.00         |
| Sandco, Inc                               |                  |                      |                  |                 |
| <i>Prime Contractor of DB Team</i>        | \$ 13,039,218.85 | 75.17                | \$ 11,336,976.14 | \$ 4,037,607.46 |
| Pinnacle Construction                     |                  |                      |                  |                 |
| <i>Construction Materials/Delivery</i>    | \$ 555,823.17    | 3.20                 | \$ 555,823.17    | \$ 555,823.17   |
| <hr/>                                     |                  |                      |                  |                 |
| Total Construction Contract:              | \$ 17,346,510.95 | 100.00%              | \$ 15,437,963.91 | \$ 6,359,162.38 |

|                           |                 |        |
|---------------------------|-----------------|--------|
| Construction MBE Goal:    | \$ 3,642,767.30 | 21.00% |
| Construction MBE to Date: | \$ 4,100,987.77 | 26.56% |

## **E2 - CAPITAL CIRCLE SE – WOODVILLE HIGHWAY TO TRAM ROAD**

### **Project Status:**

The Design-Build Contract was executed on 6/05/07. Utility kick-off meeting was held on 6/27/07. The Pre-construction Conference and the Public Meeting were held on 7/24/07. A Joint Project Agreement (JPA) was entered into by St. Joe Company, City of Tallahassee and Blueprint 2000 on 7/31/07. Per terms of this JPA, easements for five drainage ponds and Right-of-Way donated to the project by St. Joe were obtained from St. Joe. Notice to Proceed was issued to the Design-Build Team on 8/28/07 and the Ground Breaking Ceremony was held on 8/29/07.

The National Features Inventory (NFI) report was approved by COT Growth Management. COT Growth Management issued the Environmental Impact Assessment exemption (EIA short form B (low)) for Segments 1 and 3A in October 2007. The EIA for Segment 2 was approved by COT Growth Management on 12/18/07. The Clearing and Grubbing Permit, including "sediment sumps" located at the future stormwater pond sites, and fill stockpiling permit, were issued by Growth Management for Segments 1 and 3A. The clearing permit for Segment 2 was issued on 1/17/08, with the exception of Pond 600. The clearing permit for Pond 600 was obtained in March 2008. The Stormwater Permit was received from the Department of Environmental Protection. The EMP permit for Segment 1B was obtained from COT Growth Management on 3/24/08, for Segment 1A on 6/27/08 and for Segment 3A on 8/28/08. The EIA for Segment 3B was approved by Growth Management on 5/08/08. The clearing and grubbing permit for Segment 3B was obtained on 7/11/08. The EMP permit application for Segment 2 was issued by Growth Management on 12/19/08. Lighting plans are complete and were released for construction on 2/17/09. Roadway plans were released for construction for Segment 2. Segment 1B EMP permit update for Southchase Boulevard and Marketplace Drive intersections were obtained on 4/07/09. Blueprint reviewed final Traffic Signal plans for Woodville Highway, Southchase Boulevard and SouthWood Marketplace Drive intersections, and released them for construction on 6/15/09. The EMP permit update for Pond 300 conveyance was obtained on 6/28/09. The EMP permit for Segment 3B was obtained on 7/10/2009. The Management of Traffic (MOT) Plans for the entire project were reviewed by Blueprint and released for construction on 7/17/09. Blueprint reviewed roadway final plans for Segment 3B and released them for construction on 10/14/09. Blueprint released final Signing and Pavement Marking plans for construction on 4/13/10.

The Electrical Resistivity Imaging (ERI) tests are complete for Ponds 200, 300, Pond 300 conveyance easement and Pond 600. The ERI test results at Pond 200 and Pond 600, and the soil borings at Pond 600 indicated that all pond sites are acceptable for pond locations, and no further investigations were recommended. Karst investigations at Ponds 100 and 100A are complete. Additional borings were advanced at Pond 100A, and mitigation alternatives were prepared for that pond. Karst investigations were conducted at Segment 3A sinkhole and additional borings were advanced to establish the need for mitigation measures. The final report, including recommendations, was submitted to Blueprint on 7/17/09. Blueprint coordinated with FDOT regarding mitigation for the sinkholes. Several small diameter voids were discovered during construction of the CCSE westbound lanes, which were backfilled with embankment material or fly-ash grout and sealed with clay or geotextile.

Utility relocation and new installation work is complete. Sanitary gravity sewer lines are complete. A 12 inch "bleed-off" sanitary sewer system was installed in the southeast quadrant of CCSE and Woodville Highway intersection. The Air Release Valve vaults were placed on 42" and 36" sanitary force mains. Installation of drainage pipes and structures is complete - some local adjustments of drainage structures are required. Road construction up to the top of structural asphalt is substantially complete on the project. One lane of traffic in eastbound and westbound directions was provided at the beginning of July 2010 upon completion of structural asphalt.

---

## **E2 - CAPITAL CIRCLE SE – WOODVILLE HIGHWAY TO TRAM ROAD**

### **Project Status (continued):**

Permanent traffic signal installation at the Lakes at San Marcos intersection on Woodville Highway is substantially complete. Work on traffic signals at Woodville Highway and Marketplace Drive/CCSE intersections is substantially complete. Placement of friction course and temporary pavement markings are scheduled to begin in the next reporting period.

The Dispute Resolution Board (DRB) meeting was held on 7/22/2010

### **Activities Since Last Period:**

1. Completed second lift of structural asphalt on CCSE, Woodville Highway and at future cross roads intersections
2. Continued grading of embankment on the north side of CCSE
3. Continued testing of completed street lighting installations and field adjustments/revisions as required
4. Continued placing topsoil, sod and ground cover and other landscaping elements on CCSE and Woodville Highway
5. Provided field adjustments to driveways and drainage structures at various locations
6. Continued curb and gutter installation and adjustments in transitions at both ends of the project
7. Continued revisions to signing and pavements marking plans
8. Continued temporary pavement markings and permanent signing installation at various locations
9. Continued installation of permanent traffic loops at signalized intersections

### **Planned Activities for Next Period:**

1. Begin placement of friction course and temporary pavement markings on friction course
2. Complete grading of embankment on the north side of CCSE
3. Complete testing of all elements of street lighting system
4. Continue construction of Merchants Row Boulevard, Southchase Boulevard and Marketplace Drive intersections on the north side of CCSE
5. Complete installation of traffic signal loops and miscellaneous wiring at SouthWood Marketplace Drive intersection
6. Complete corrections and inspection of deficient drainage pipes and structures at various locations
7. Continue punch list items, including erosion control in linear ponds and median
8. Continue installation and maintenance of landscaping in CCSE median and on CCSE north side

**E2 - CAPITAL CIRCLE SE – WOODVILLE HIGHWAY TO TRAM ROAD**

**Construction of Concrete Separator on Woodville Highway**





**E2 - CAPITAL CIRCLE SE – WOODVILLE HIGHWAY TO TRAM ROAD**

**Installation of Traffic Signal Mast Arm at Marketplace Drive**



**E2 - CAPITAL CIRCLE SE – WOODVILLE HIGHWAY TO TRAM ROAD**

**Removal of Pre-Fabricated Concrete Shed from Verizon's Cell Tower**



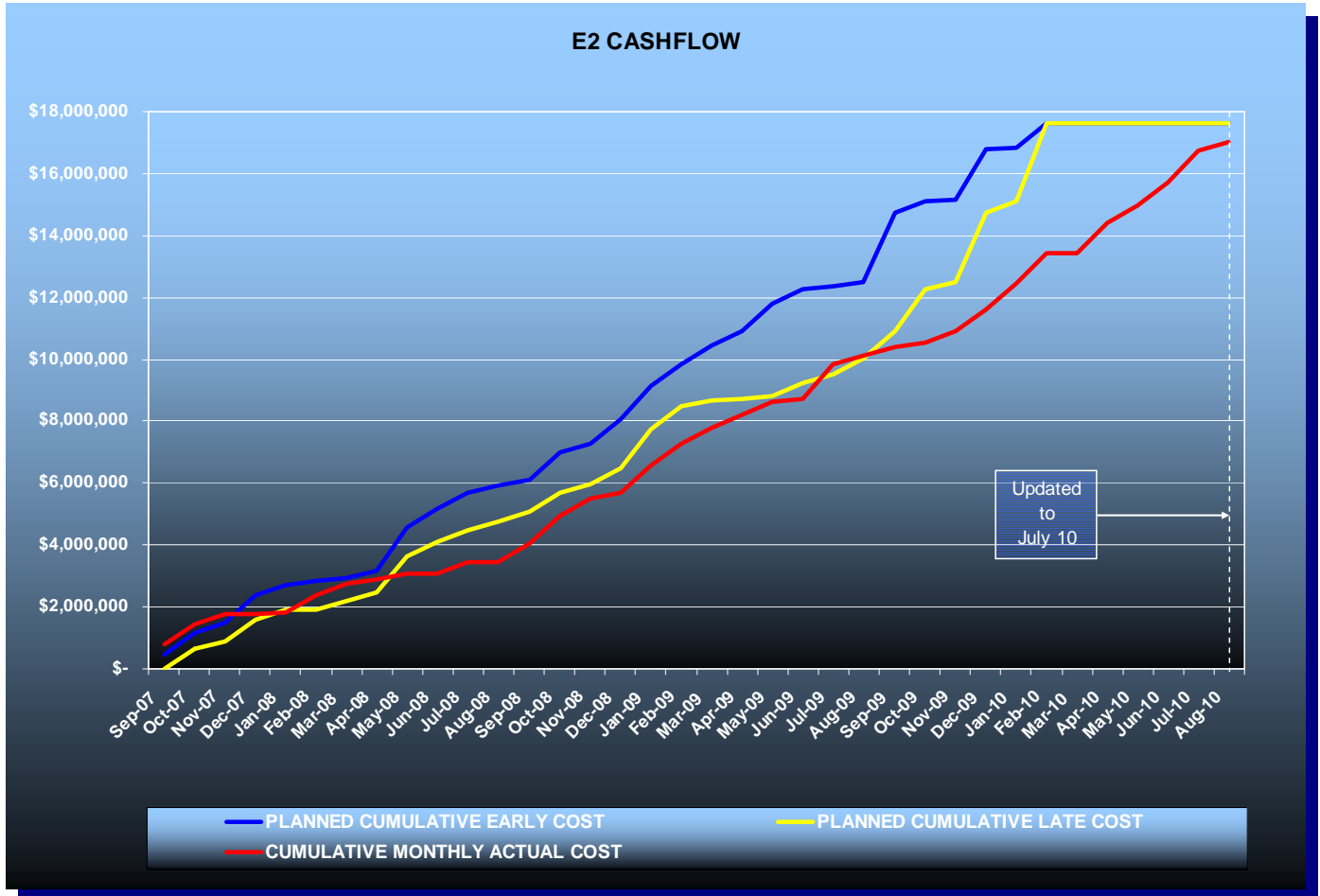
**E2 - CAPITAL CIRCLE SE – WOODVILLE HIGHWAY TO TRAM ROAD**

**West Approach to Future SouthWood Marketplace Drive Intersection**



**E2 - CAPITAL CIRCLE SE – WOODVILLE HIGHWAY TO TRAM ROAD**

**Contract Financial Summary of Planned Vs. Actual Costs**





**E1 - CAPITAL CIRCLE SE – CONNIE DRIVE TO TRAM ROAD**

**Project Description:**

The proposed 3.44-mile project along Capital Circle Southeast (US 319/SR 261) extends from south of Tram Road to Connie Drive (milepost 1.931 and 5.371) in Leon County and includes expanding the existing two-lane undivided rural roadway to a six-lane divided urban (curb and gutter) facility. The purpose of the roadway improvement project is to increase the capacity and safety of the existing highway. New traffic signals, including ITS features, will be provided at six intersections: Tram Road, Shumard Oak Boulevard, Merchants Row Drive, Blair Stone Road, Orange Avenue and Old St. Augustine Road. The project also includes significant landscaping as well as pedestrian, bicycle and recreational amenities.

**Project Personnel:**

|                                 |                                 |                  |
|---------------------------------|---------------------------------|------------------|
| <b>Blueprint 2000:</b>          | <b>Program Manager:</b>         | David Snyder     |
|                                 | <b>Project Manager:</b>         | Marek Romanowski |
|                                 | <b>Construction Manager:</b>    | Marcus Kelly     |
| <b>Joint Venture/PBS&amp;J:</b> | <b>Project Director, JV:</b>    | William Mayfield |
|                                 | <b>Project Mgr., PBS&amp;J:</b> | Steve Martin     |

**Project Status:**

Blueprint 2000 issued Final Acceptance Letter for this project on 6/16/08.

The total contract duration was 1253 calendar days.

The final construction cost was \$37,715,142.

**M/WBE Participation:                      Design    18.01%                                      Construction    25.17%**

**Right-Of-Way Status Report:**

Blueprint is in possession of all parcels.

**C2 – CAPITAL CASCADE TRAIL – SEGMENT 2 DESIGN**

**Project Description:**

Within the Capital Cascade Trail, Segment 2 is from Lafayette Street to South Monroe Street.

**Project Personnel:**

|                        |                          |                |
|------------------------|--------------------------|----------------|
| <b>Blueprint 2000:</b> | <b>Planning Manager:</b> | David Bright   |
|                        | <b>Project Manager:</b>  | Gary Phillips  |
| <b>Genesis:</b>        | <b>Project Manager:</b>  | Mark Llewellyn |

**Contract Cost & Schedule Status - Agreement No. 533/Authorization LOA - As of 8/9/2010**

|                                      |                 |
|--------------------------------------|-----------------|
| Contract Commencement:               | 30May06         |
| Original Contract Completion:        | 12Dec10         |
| Percent of Work Performed:           | 99.0%           |
| <br>                                 |                 |
| Original Contract Amount:            | \$ 2,399,652.27 |
| Executed Supplemental Agreements:    | \$ 1,549,692.35 |
| Pending Supplemental Agreements:     | \$ 0.00         |
| Current Contract Amount:             | \$ 3,949,344.62 |
| Invoiced to Date:                    | \$ 3,895,626.39 |
| Remaining Contract Amount:           | \$ 53,718.23    |
| Percent of Contract Amount Complete: | 98.6%           |
| <br>                                 |                 |
| Original Contract Time:              | 519 Days        |
| Contract Time Extensions:            | 1035 Days       |
| Current Contract Time:               | 1554 Days       |
| Contract Time Expended:              | 1534 Days       |
| Contract Time Remaining:             | 20 Days         |
| Percent Contract Time Expended:      | 98.7%           |

**Schedule Milestones:**

|   |         |
|---|---------|
| Letter of Authorization                                   | 30May06 |
| Submit Design Project Schedule                            | 15Jun06 |
| Workshop #1: Program Formation                            | 15Sep06 |
| Workshop #2: Design Selection                             | 14Sep06 |
| Plan Submittal - 50%                                      | 19Oct07 |
| Plan Submittal - 90%                                      | 31Mar09 |
| 90% Re-Submittal and Specifications                       | 31Jul09 |
| Release IFB (Final Construction Plans and Specifications) | 12Nov09 |
| Bid Opening   | 04Feb10 |

**C2 - CAPITAL CASCADE TRAIL – SEGMENT 2 DESIGN**

| Design Subconsultant Participation:                               | Contract Amt    | % of Design Contract | Expended To Date | FY To Date    |
|---|-----------------|----------------------|------------------|---------------|
| Archaeological Consultants Inc.<br><i>Archaeological Services</i> | \$ 32,794.68    | 0.83                 | \$ 32,794.68     | \$ 0.00       |
| Environmental and Geotechnical Specialist<br><i>Geotechnical</i>  | \$ 261,743.38   | 6.63                 | \$ 261,743.38    | \$ 3,533.38   |
| Akin Associates Architects<br><i>Architectural</i>                | \$ 170,193.23   | 4.31                 | \$ 161,703.23    | \$ 26,176.40  |
| Moore Bass<br><i>Land Planning</i>                                | \$ 4,659.91     | 0.12                 | \$ 4,456.16      | \$ 0.00       |
| Uzzell Advertising<br><i>Public Relations</i>                     | \$ 14,062.61    | 0.36                 | \$ 14,062.61     | \$ 0.00       |
| Carr, Lynch, Sandell<br><i>Park Design</i>                        | \$ 623,420.65   | 15.79                | \$ 599,376.82    | \$ 25,270.44  |
| Jennings Environmental<br><i>Environmental</i>                    | \$ 27,198.52    | 0.69                 | \$ 27,198.52     | \$ 0.00       |
| Pinnacle Engineering Group<br><i>MEP</i>                          | \$ 121,913.86   | 3.09                 | \$ 118,367.72    | \$ 10,139.95  |
| CDM<br><i>Stormwater</i>  | \$ 183,410.00   | 4.64                 | \$ 183,410.00    | \$ 686.55     |
| Genesis Group<br><i>Prime</i>                                     | \$ 2,210,909.02 | 55.98                | \$ 2,200,182.43  | \$ 107,253.81 |
| PBS&J/Brown and Caldwell<br><i>Water Quality</i>                  | \$ 98,736.00    | 2.50                 | \$ 96,866.00     | \$ 11,464.40  |
| Garcia Bridge Engineers<br><i>Bridge Design</i>                   | \$ 196,262.76   | 4.97                 | \$ 191,424.84    | \$ 17,902.99  |
| Rosenbaum<br><i>Park Design</i>                                   | \$ 4,040.00     | 0.10                 | \$ 4,040.00      | \$ 404.00     |
| <hr/>   |                 |                      |                  |               |
| Total Design Contract:  | \$ 3,949,344.62 | 100.00%              | \$ 3,895,626.39  | \$ 202,831.92 |

|                       |               |        |
|-----------------------|---------------|--------|
| Design M/WBE Goal:    | \$ 612,148.42 | 15.50% |
| Design M/WBE to Date: | \$ 666,184.90 | 20.29% |

**\*\*Please Note: Carr, Lynch and Sandell's contract amount is not contained in the M/WBE calculation.**



---

## **C2 - CAPITAL CASCADE TRAIL – SEGMENT 2 DESIGN**

### **Project Status:**

Letters of Authorization #5 and #6 were executed on March 9 and May 30, 2006, respectively. The two LOAs have been combined under Segment 2 Design and Permitting task for a total cost of \$2,399,652.27. Supplemental Agreement #7 was executed on September 18, 2007 for a total of \$1,105,479.33. Supplemental Agreement #8 was issued on December 15, 2008 for a total of \$366,216.49. Supplemental Agreement #9 was issued on November 19, 2009 for a total of 77,996.52.

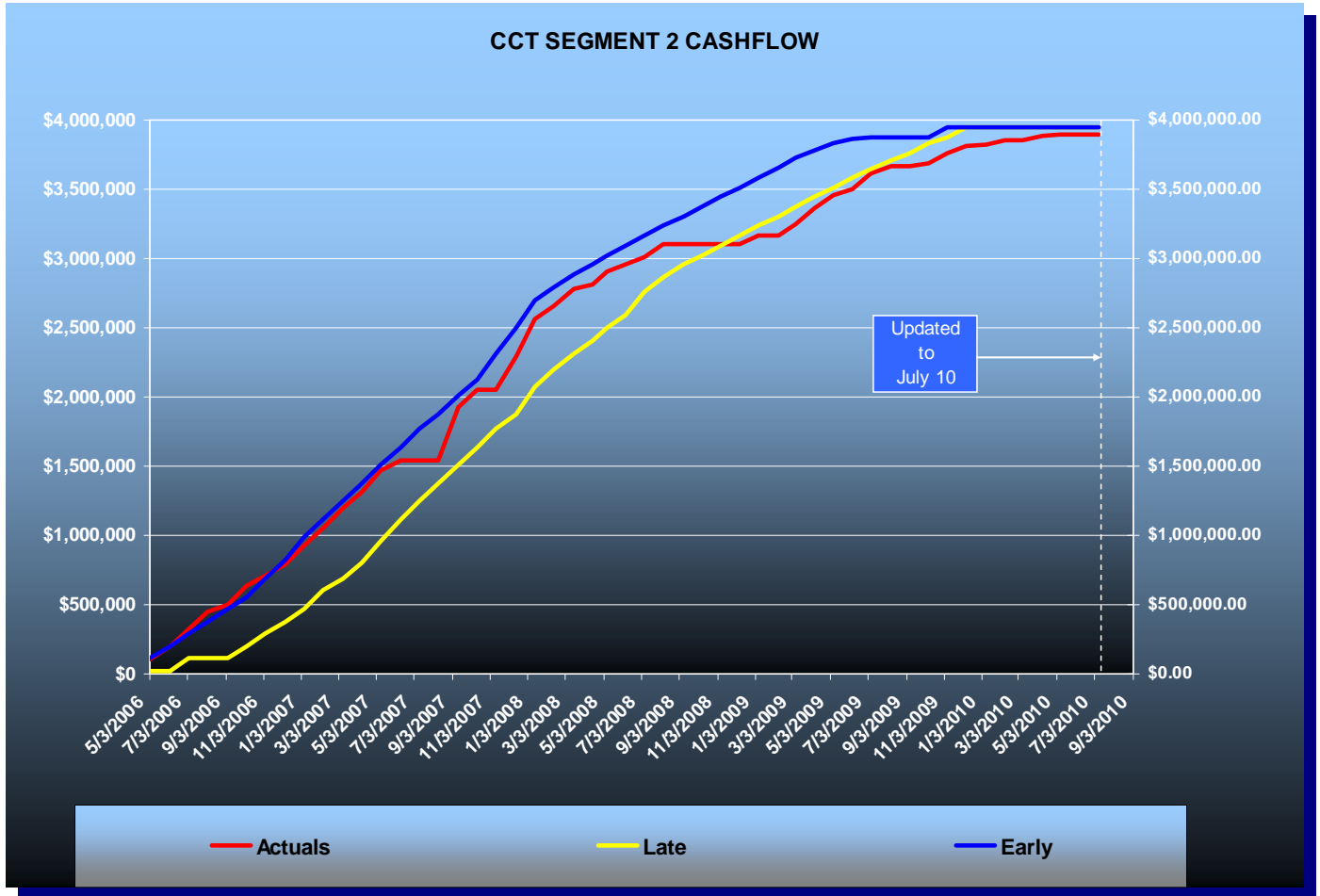
The new total contact amount is \$3,949,344.61

### **Activities Since Last Period:**

1. Continued coordinating design of manhole extensions for electric duct bank and gas filled line along Gadsden Street
2. Submitted Consumptive Use Permits for irrigation and pond augmentation to NFWFMD
3. Obtain Landscape Permits Approval from FDOT for Monroe Street and Apalachee Parkway
4. Obtain General Use Permit Approval from FDOT for Apalachee Parkway and South Monroe

**C2 - CAPITAL CASCADE TRAIL – SEGMENT 2 DESIGN**

**Contract Financial Summary of Planned Vs. Actual Costs**



**Right-Of-Way Status Report:**

FDEP TIITF Lease Agreement has been executed with an effective date of September 1, 2008.

**C2 - CAPITAL CASCADE TRAIL – SEGMENT 2 CONSTRUCTION**

**Project Description:**

Capital Cascade Park Construction

**Project Personnel:**

|                        |                             |               |
|------------------------|-----------------------------|---------------|
| <b>Blueprint 2000:</b> | <b>Project Manager:</b>     | Gary Phillips |
|                        | <b>CEI Project Manager:</b> | Marcus Kelly  |
| <b>Sandco:</b>         | <b>Project Manager:</b>     | Jeff Sprouse  |

**Contract Cost & Schedule Status - As of 7/12/2010**

|                                      |                  |
|--------------------------------------|------------------|
| Contract Commencement:               | 06Jul10          |
| Contract Completion:                 | 05Jul12          |
| Percent of Work Performed:           | 5.0%             |
| Original Contract Amount:            | \$ 22,970,011.43 |
| Executed Supplemental Agreements:    | \$ 0.00          |
| Pending Supplemental Agreements:     | \$ 0.00          |
| Current Contract Amount:             | \$ 22,970,011.43 |
| Invoiced to Date:                    | \$ 1,163,863.25  |
| Remaining Contract Amount:           | \$ 21,806,148.18 |
| Percent of Contract Amount Complete: | 5.1%             |
| Original Contract Time:              | 730 Days         |
| Contract Time Extensions:            | 0 Days           |
| Current Contract Time:               | 730 Days         |
| Contract Time Expended:              | 35 Days          |
| Contract Time Remaining:             | 695 Days         |
| Percent Contract Time Expended:      | 4.8%             |

**C2 - CAPITAL CASCADE TRAIL – SEGMENT 2 CONSTRUCTION**

| Design Subconsultant Participation:                             | Contract Amt     | % of Design Contract | Expended To Date | FY To Date      |
|---|------------------|----------------------|------------------|-----------------|
| Metal Fabrication<br><i>Railing, Bridges, Metal Fabrication</i> | \$ 1,000,000.00  | 4.35                 | \$ 0.00          | \$ 0.00         |
| Hawthorne Construction<br><i>Concrete Work</i>                  | \$ 750,000.00    | 3.27                 | \$ 0.00          | \$ 0.00         |
| Ingram Signalization<br><i>Signalization</i>                    | \$ 270,000.00    | 1.18                 | \$ 0.00          | \$ 0.00         |
| Crosspoint (utilities)<br><i>Underground Utilities</i>          | \$ 1,000,000.00  | 4.35                 | \$ 0.00          | \$ 0.00         |
| Pinnacle Const. Support<br><i>Construction Management</i>       | \$ 1,840,000.00  | 8.01                 | \$ 0.00          | \$ 0.00         |
| Sandco<br><i>Prime</i>  | \$ 18,110,011.43 | 78.84                | \$ 1,163,863.25  | \$ 1,163,863.25 |
| <hr/>   |                  |                      |                  |                 |
| Total Construction Contract:                                    | \$ 22,970,011.43 | 100.00%              | \$ 1,163,863.25  | \$ 1,163,863.25 |

|                           |                 |        |
|---------------------------|-----------------|--------|
| Construction MBE Goal:    | \$ 4,823,702.40 | 21.00% |
| Construction MBE to Date: | \$ 0.00         | 0.00%  |

**Activities Since Last Period:**

1. Construction of Sanitary Sewer underneath Cascade Park Lane
2. Mobilized Field Office/Staging Area north of Apalachee Parkway
3. Demolition of existing structures
4. Demolition of Centennial Field historic wall along Monroe and CSX RR
5. Utility investigations along Gadsden Street
6. Constructed access road from Gaines Street
7. Installing erosion control items and tree protection devices
8. Removed unsuitable material in three locations along Cascade Park Lane
9. Removed and disposed of impacted material near the FDOT Parking Lot #47 south of Myers Park Drive
10. Reviewed and processed numerous Requests for Information (RFIs)

---

## **C2 - CAPITAL CASCADE TRAIL – SEGMENT 2 CONSTRUCTION**

### **Planned Activities for Next Period:**

1. Lower Pond (Boca Chuba) grading and recontouring
2. Continue Construction of Sanitary Sewer underneath Cascade Park Lane
3. Begin lower pond box culvert construction (12' x 5' and 8' x 3.5')
4. Install sheet piling and begin retaining wall construction under CSX bridge trestle
5. COT Electric to begin realignment of electric duct bank to the east of Gadsden Street using its own forces
6. Upon COT approval, implement Stormwater Pollution Prevention Plan (SWPPP) modifications using a modified reno mattress in lieu of rock dams
7. Continue to design support system for gas filled electric line, but electric duct-bank support is no longer needed
8. Begin COT HP gas line relocation
9. Review and process RFIs
10. Remove contamination in Area 4 and underneath Gadsden Street as required

---

**C2 - CAPITAL CASCADE TRAIL – SEGMENT 2 CONSTRUCTION**

**Lower Park – Boca Chuba Pond**



---

**C2 - CAPITAL CASCADE TRAIL – SEGMENT 2 CONSTRUCTION**

Lower Park Looking East



---

**C2 - CAPITAL CASCADE TRAIL – SEGMENT 2 CONSTRUCTION**

**Lower Park - Paving of Cascade Park Lane**





**C2 - CAPITAL CASCADE TRAIL – SEGMENT 2 CONSTRUCTION**

**Lower Park – Unsuitable Material**



**C3 & C4 - CAPITAL CASCADE TRAIL – SEGMENTS 3 AND 4 DESIGN**

**Project Description:**

Phase 2 tasks have been authorized and include the following major elements:

- Design and permitting for ditch lining between South Monroe Street and Adams Street
- Design and permitting for Coal Chute Pond
- 60% Construction documents for Black Swamp Nature Park

**Project Personnel:**

|                        |                          |               |
|------------------------|--------------------------|---------------|
| <b>Blueprint 2000:</b> | <b>Planning Manager:</b> | David Bright  |
|                        | <b>Program Manager:</b>  | Dave Snyder   |
|                        | <b>Project Manager:</b>  | Gary Phillips |
| <b>Kimley-Horn:</b>    | <b>Project Manager:</b>  | Richard Barr  |

**Contract Cost & Schedule Status - Agreement No. 1736/Authorization LOA #1 - As of 7/12/2010**

|                                      |                 |
|--------------------------------------|-----------------|
| Contract Commencement:               | 01Jun08         |
| Original Contract Completion:        | 01Jun09         |
| Percent of Work Performed:           | 76.0%           |
| <br>                                 |                 |
| Original Contract Amount:            | \$ 1,057,759.98 |
| Executed Supplemental Agreements:    | \$ 880,694.00   |
| Pending Supplemental Agreements:     | \$ 0.00         |
| Current Contract Amount:             | \$ 1,938,453.98 |
| Invoiced to Date:                    | \$ 1,428,523.24 |
| Remaining Contract Amount:           | \$ 509,930.74   |
| Percent of Contract Amount Complete: | 73.7%           |
| <br>                                 |                 |
| Original Contract Time:              | 365 Days        |
| Contract Time Extensions:            | 548 Days        |
| Current Contract Time:               | 913 Days        |
| Contract Time Expended:              | 772 Days        |
| Contract Time Remaining:             | 141 Days        |
| Percent Contract Time Expended:      | 84.6%           |

**Schedule Milestones:**

|                              |         |
|------------------------------|---------|
| IMC Approval                 | 27May08 |
| Contract Executed            | 29May09 |
| Phase 2 Kick-Off Meeting     | 11Aug09 |
| Ditch Lining Deliverables    | 26Mar10 |
| Coal Chute Pond Deliverables | 17Aug10 |
| All Deliverables             | 01Dec10 |

**C3 & C4 - CAPITAL CASCADE TRAIL – SEGMENTS 3 AND 4 DESIGN**

| <b>Design Subconsultant Participation:</b>                              | <b>Contract Amt</b> | <b>% of Design Contract</b> | <b>Expended To Date</b> | <b>FY Year To Date</b> |
|---|---------------------|-----------------------------|-------------------------|------------------------|
| Tampa Bay Engineering<br><i>Utility Investigation</i>                   | \$ 80,445.89        | 4.15                        | \$ 56,750.89            | \$ 0.00                |
| <b>3DS</b><br><i>Surveying/Right-of-Way Services</i>                    | \$ 443,092.00       | 22.86                       | \$ 440,039.50           | \$ 46,164.50           |
| Cheryl Johnson<br><i>Model Review</i>                                   | \$ 14,750.00        | 0.76                        | \$ 5,148.00             | \$ 0.00                |
| In-Situ<br><i>Stream Gage installation and monitoring</i>               | \$ 32,000.00        | 1.65                        | \$ 32,000.00            | \$ 0.00                |
| Biological Research & Associates<br><i>Environmental</i>                | \$ 48,500.00        | 2.50                        | \$ 48,500.00            | \$ 0.00                |
| CDM<br><i>Stormwater Modeling and Design</i>                            | \$ 286,381.00       | 14.77                       | \$ 244,938.92           | \$ 19,802.92           |
| Kimley-Horn<br><i>Prime - Data Collection, Environmental, Project M</i> | \$ 985,438.00       | 50.84                       | \$ 611,446.84           | \$ 252,285.86          |
| <b>EGS</b><br><i>Geotechnical</i>                                       | \$ 47,847.00        | 2.47                        | \$ 23,179.69            | \$ 0.00                |
| <b>Total Design Contract:</b>   | \$ 1,938,453.89     | 100.00%                     | \$ 1,462,003.84         | \$ 318,253.28          |

|                            |               |        |
|----------------------------|---------------|--------|
| <b>Design MBE Goal:</b>    | \$ 300,460.35 | 15.50% |
| <b>Design MBE to Date:</b> | \$ 463,219.19 | 31.68% |

## **C3 & C4 - CAPITAL CASCADE TRAIL – SEGMENTS 3 AND 4 DESIGN**

### **Project Status:**

Blueprint is working with the City Economic Development Office on the design, Right-of-Way acquisition and construction phases for Coal Chute Pond located in Segment 3 between the CSX Railroad, the St. Augustine Branch (SAB) ditch and Railroad Square. The City is looking for locations that will provide stormwater treatment opportunities for Gaines Street and Railroad Square Redevelopment. COT is preparing an Economic Development Administration Grant to fund the design and construction of Coal Chute Pond. Blueprint has identified eight parcels that need to be acquired in order to construct the Coal Chute Pond.

Parcel No. 4101208060000 located between South Monroe Street and South Adams Street is owned by the City of Tallahassee. Blueprint 2000 will not need to acquire this property to complete the ditch improvements and Capital Cascade Connector Bridge.

Blueprint has requested titles, legal descriptions/sketches for each of the parcels to be acquired.

Phase 2 tasks have been authorized and include the following major elements:

- Technical and Stakeholder Meetings
- Ditch Lining Design and Permitting (from South Monroe Street to Adams Street)
- Coal Chute Park Stormwater Management Facility Design and Permitting
- Pond 5 Design (permitting is not included)
- QA/QC

### **Activities Since Last Period:**

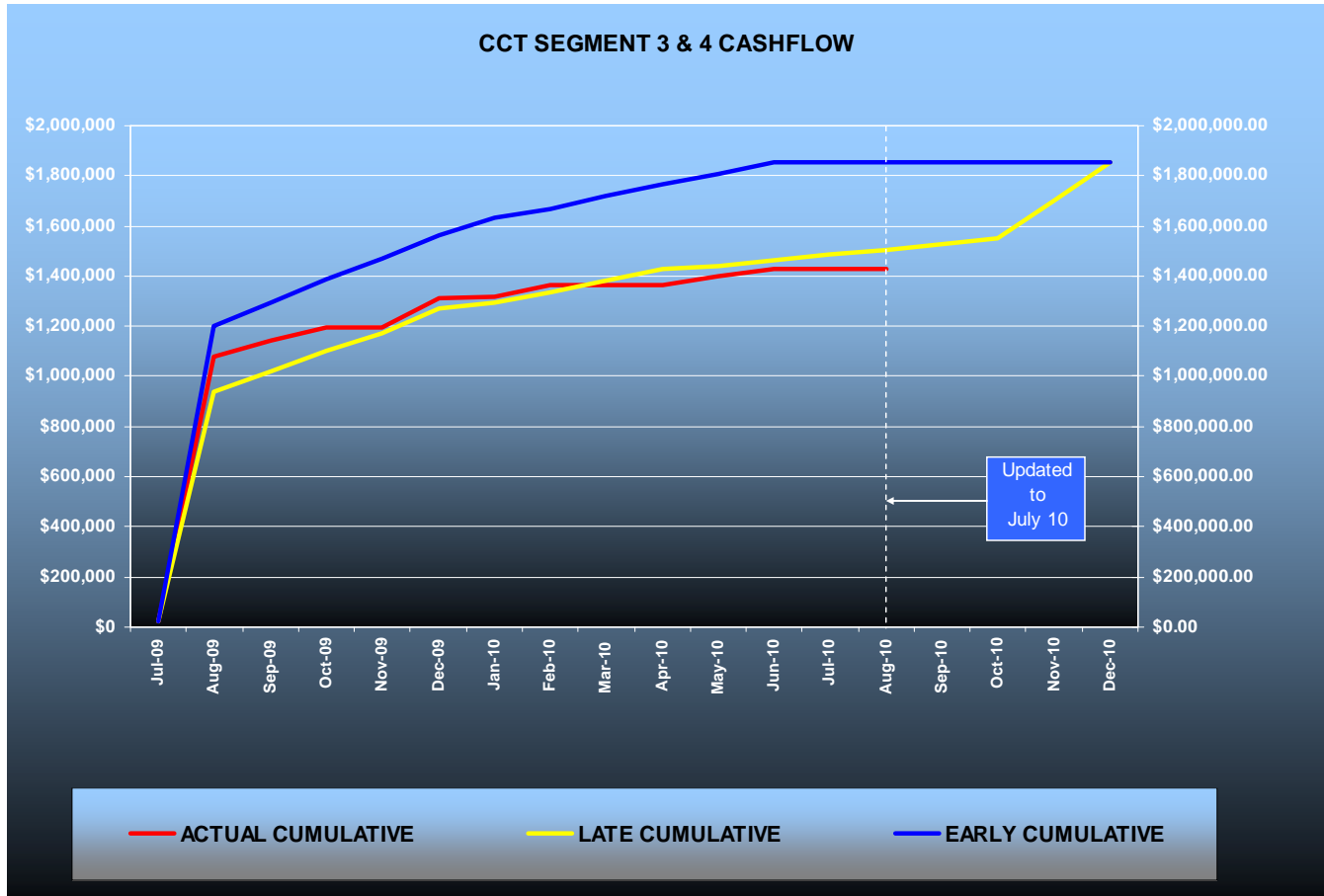
1. Proceeded with design of double 10'x8' box culvert from west of South Monroe Street to west of South Adams Street
2. Prepared and submitted Coal Chute Park Pond LUCC
3. Received SHPO Clearance for Coal Chute Park Pond
4. Met with City of Tallahassee Growth Management to discuss Special Development Zone impacts to Pond 5 plans
5. Coordinated meeting time with Tom Franklin, FDEP, to review Pond 5 concepts next month
6. Attended FAMU Way coordination meeting with the City and Blueprint
7. Prepared and submitted Draft Scope of Services for Segment 3 Overall Design (30%)

### **Planned Activities for Next Period:**

1. Update City fast-track file on ditch lining project to include the additional project area within Adams Street right-of-way and west
2. Prepare and submit Coal Chute Park Pond NFI for Blueprint review, then for City review
3. Complete 30% design of Coal Chute Park Pond and submit for Blueprint review
4. Meet with Tom Franklin (FDEP) on August 26 to review Pond 5 concepts
5. Issue NTP for Segment 3 Overall Design (30%)
6. Attended FAMU Way coordination meeting with City and Blueprint

**C3 & C4 - CAPITAL CASCADE TRAIL – SEGMENTS 3 AND 4 DESIGN**

**Contract Financial Summary of Planned Vs. Actual Costs**



---

## **C3 & C4 - CAPITAL CASCADE TRAIL – SEGMENTS 3 AND 4 DESIGN**

### **Right-Of-Way Status Report:**

Blueprint is working with the City Economic Development Office on the design, Right-of-Way acquisition and construction phases for Coal Chute Pond located in Segment 3 between the CSX Railroad, the SAB ditch and Railroad Square. The City is looking for locations that will provide stormwater treatment opportunities for Gaines Street and Railroad Square Redevelopment. COT is preparing an Economic Development Administration Grant to fund the design and construction of Coal Chute Pond. Blueprint has identified eight parcels that need to be acquired in order to construct the Coal Chute Pond.

Parcel No. 4101208060000 located between South Monroe Street and South Adams Street is owned by the City of Tallahassee. Blueprint 2000 will not need to acquire this property to complete the ditch improvements and interconnector bridge.

Blueprint has requested titles, legal descriptions/sketches for each of the parcels to be acquired.

## **ACRONYM GLOSSARY**

|              |  |
|--------------|--|
| <b>ACOE</b>  | Army Corps of Engineers                                |
| <b>CAC</b>   | Citizens Advisory Committee                            |
| <b>CDM</b>   | Camp, Dresser & McKee Inc.                             |
| <b>CEI</b>   | Construction Engineering & Inspection                  |
| <b>CLOMR</b> | Conditional Letter of Map Revision                     |
| <b>COT</b>   | City of Tallahassee                                    |
| <b>CR</b>    | Community Representative                               |
| <b>CRA</b>   | Community Redevelopment Agency                         |
| <b>CRCDD</b> | Capital Region Community Development District          |
| <b>CRTPA</b> | Capital Region Transportation Planning Agency          |
| <b>DB</b>    | Design-Build   |
| <b>DHR</b>   | Department of Historical Resources                     |
| <b>DMS</b>   | Department of Management Services                      |
| <b>DRB</b>   | Dispute Resolution Board                               |
| <b>ECMP</b>  | Environmental Construction Management Plan             |
| <b>EIA</b>   | Environmental Impact Assessment                        |
| <b>EIS</b>   | Environmental Impact Study                             |
| <b>EMP</b>   | Environmental Management Permit                        |
| <b>ERP</b>   | Environmental Resource Permit                          |
| <b>ETD</b>   | Earned to Date   |
| <b>ETDM</b>  | Efficient Transportation Decision Making               |
| <b>FCT</b>   | Florida Communities Trust                              |
| <b>FDEP</b>  | Florida Department of Environmental Protection         |
| <b>FDOT</b>  | Florida Department of Transportation                   |
| <b>FEMA</b>  | Federal Emergency Management Agency                    |
| <b>FHWA</b>  | Federal Highway Administration                         |
| <b>FWC</b>   | Florida Fish & Wildlife Conservation Commission        |
| <b>FY</b>    | Fiscal Year (For BLUEPRINT 2000, October to September) |

---

## **ACRONYM GLOSSARY**

|                 |  |
|-----------------|--|
| <b>GEC</b>      | General Engineering Consultant               |
| <b>GM</b>       | Growth Management                            |
| <b>HASP</b>     | Health and Safety Plan                       |
| <b>IA</b>       | Intergovernmental Agency                     |
| <b>IC/RC</b>    | Institutional Controls/Restrictive Covenants |
| <b>IFB</b>      | Invitation For Bid                           |
| <b>ITE</b>      | Institute of Transportation Engineers        |
| <b>JPA</b>      | Joint Participation Agreement                |
| <b>LAP</b>      | Local Agency Program                         |
| <b>LCPWD</b>    | Leon County Public Works Department          |
| <b>LDCA</b>     | Location Design Concept Approval             |
| <b>LOA</b>      | Letter of Authorization                      |
| <b>LOMR</b>     | Letter of Map Revision                       |
| <b>M/WBE</b>    | Minority/Women Business Enterprise           |
| <b>MOT</b>      | Maintenance of Traffic                       |
| <b>MSE</b>      | Mechanically Stabilized Earth                |
| <b>MSSW</b>     | Management and Storage of Surface Waters     |
| <b>NFI</b>      | Natural Features Inventory                   |
| <b>NTP</b>      | Notice to Proceed                            |
| <b>NWFWMD</b>   | Northwest Florida Water Management District  |
| <b>OT</b>       | Order of Taking                              |
| <b>PD&amp;E</b> | Project Development and Environmental        |
| <b>RFP</b>      | Request for Proposals                        |
| <b>RFQ</b>      | Request for Qualifications                   |
| <b>ROW</b>      | Right-of-Way                                 |
| <b>SAB</b>      | St. Augustine Branch                         |
| <b>SFMP</b>     | Stormwater Facility Management Plan          |
| <b>SHPO</b>     | State Historic Preservation Officer          |



## **ACRONYM GLOSSARY**

|              |   |
|--------------|---|
| <b>SUE</b>   | Subsurface Utility Engineering                  |
| <b>SWPPP</b> | Stormwater Pollution Prevention Plan            |
| <b>TCC</b>   | Technical Coordinating Committee                |
| <b>TCE</b>   | Temporary Construction Easement                 |
| <b>TIITF</b> | Trustees of the Internal Improvement Trust Fund |
| <b>UAO</b>   | Utility Agency/Owner                            |
| <b>USEPA</b> | United States Environmental Protection Agency   |
| <b>USFS</b>  | United States Forest Service                    |
| <b>USFWS</b> | US Fish and Wildlife Service                    |
| <b>VE</b>    | Value Engineering                               |
| <b>YTD</b>   | Year to Date                                    |