

BLUEPRINT 2000 & BEYOND

1311 Executive Center Drive, Suite 109

Koger Center, Ellis Building

Tallahassee, Florida 32301

TABLE OF CONTENTS

I. Monthly Progress Reports

| | <u>Page</u> |
|---|-------------|
| GEC – General Engineering Consultant | 1 |
| GEC – Public Involvement | 5 |
| N1 - Capital Circle NW – I-10 to US 90 | 6 |
| N2 - Capital Circle NW/SW – SR 371 (Orange Avenue) to US 90 | 11 |
| W1 - Capital Circle SW – Crawfordville Road to SR 20 | 16 |
| E3 - Capital Circle SE – Woodville Hwy to Crawfordville Road..... | 20 |
| E2 - Capital Circle SE – Woodville Highway to Tram Road | 23 |
| E1 - Capital Circle SE – Tram Road to Connie Drive | 26 |
| C2 - Capital Cascade Trail –Segment 2 Design..... | 36 |
| Mahan Drive/US 90 – Dempsey Mayo Road to I-10 (Tier 2 Blueprint Project)..... | 41 |
| Acronymn Glossary..... | 42 |

GEC – GENERAL ENGINEERING CONSULTANT

Project Description:

General Engineering Consultant Contract for the Blueprint Intergovernmental Agency. The LPA Group Incorporated is the Prime Consultant with Jacobs Civil, Incorporated as the major subconsultant. Twelve additional subconsultants, seven of which are MBE firms, make up the LPA/Jacobs Blueprint GEC Management Team.

Key Personnel:

Program Manager: Steve Nichols – The LPA Group
 Design Manager: Marek Romanowski - The LPA Group

Contract Cost & Schedule Status – Contract 597

| | | |
|--------------------------------------|----|---------------|
| Original Contract Amount: | \$ | 7,494,493.00 |
| Fiscal Year Re-Authorization: | \$ | 4,525,519.00 |
| Executed Supplemental Agreements: | \$ | 0.00 |
| Pending Supplemental Agreements: | \$ | 0.00 |
| Current Contract Amount: | \$ | 12,020,012.00 |
| Invoiced to Date: | \$ | 9,448,098.95 |
| Remaining Contract Amount: | \$ | 2,571,913.05 |
| Percent of Contract Amount Complete: | | 78.6% |

GEC – GENERAL ENGINEERING CONSULTANT

| Subconsultant Participation: | Contract Amt | % of GEC Contract | Expended To Date | Year To Date |
|---|------------------|-------------------|------------------|-----------------|
| Moore Bass Consulting <i>Stormwater & Landscaping</i> | \$ 170,677.00 | 1.42 | \$ 86,840.43 | \$ 18,464.00 |
| Pope Environmental <i>Environmental Services</i> | \$ 211,276.00 | 1.76 | \$ 138,690.00 | \$ 13,687.50 |
| OLH International <i>Program Controls</i> | \$ 1,363,231.00 | 11.34 | \$ 1,294,391.82 | \$ 175,324.57 |
| Katherine Beck Consulting <i>Government Relations</i> | \$ 45,000.00 | 0.37 | \$ 27,242.44 | \$ 6,400.00 |
| Quest Corporation of America <i>Public Involvement</i> | \$ 592,959.00 | 4.93 | \$ 412,519.36 | \$ 118,050.86 |
| Uzzell Advertising <i>Public Relations, Web Maint.</i> | \$ 217,405.00 | 1.81 | \$ 275,588.96 | \$ 75,762.00 |
| Welch & Ward Architects <i>Architecture, Recreation Facilities</i> | \$ 0.00 | 0.00 | \$ 0.00 | \$ 0.00 |
| THC Right-of-Way Services, Inc. <i>R/W appraisal and acquisition</i> | \$ 2,379,149.00 | 19.79 | \$ 1,443,397.80 | \$ 650,785.37 |
| Berryman & Henigar <i>Survey and mapping</i> | \$ 326,406.00 | 2.72 | \$ 163,292.96 | \$ 35,159.09 |
| Weigal - Veasey <i>Property Appraisal</i> | \$ 0.00 | 0.00 | \$ 0.00 | \$ 0.00 |
| Williams Earth Sciences <i>Geotechnical Services</i> | \$ 0.00 | 0.00 | \$ 4,286.78 | \$ 0.00 |
| Allen Nobles & Associates <i>Survey</i> | \$ 0.00 | 0.00 | \$ 73,726.00 | \$ 0.00 |
| THE LPA GROUP (PRIME) <i>Prime Consultant</i> | \$ 3,444,733.00 | 28.66 | \$ 3,148,337.04 | \$ 792,361.11 |
| JACOBS (PRIME SUB) <i>Prime Subconsultant</i> | \$ 3,269,176.00 | 27.20 | \$ 2,379,785.36 | \$ 743,723.77 |
| <hr/> | | | | |
| Total Contract: | \$ 12,020,012.00 | 100.00% | \$ 9,448,098.95 | \$ 2,629,718.27 |

| | | |
|--------------|-----------------|--------|
| MBE Goal: | \$ 1,863,101.86 | 15.50% |
| MBE to Date: | \$ 2,235,273.01 | 23.66% |

GEC – GENERAL ENGINEERING CONSULTANT

Activities Since Last Period:

1. Attended regular meetings concerning E1 – CCSE
2. Negotiated Supplemental Agreement on Capital Cascade Trail for design of amenities to park and drainage features
3. Developed parking and access for Regional Pond 1
4. Documented Supplemental Agreement for final plans on N2 –CCNW/SW
5. Held Community Representative Meeting for W1-CCSW to weight PD&E evaluation criteria
6. Held Public Information Meeting for E2-CCSE
7. Held Public Information Meeting for E3-CCSE
8. Continued Coordination to eradicate apple snails from Regional Pond 1
9. Continued development of Landscape Plans for N1-CCNW
10. Coordinated with COT on Interactive Water Play Fountain
11. Submitted Permits for ERP and clearing/grubbing activities for E2-CCSE
12. Planning ribbon cutting event for N1-CCNW
13. Planning groundbreaking Event for E2-CCSE
14. Resolved Light Pole crash frangibility issue on E1-CCSE
15. Finalized JPA with St. Joe Company on E2-CCSE
16. Submitted PD&E Re-evaluation for E2 and N2 to FHWA

Planned Activities for Next Period:

1. Continue coordination on Orange Avenue connection on E1-CCSE
2. Continue coordination on Mahan Drive/US 90 Project
3. Continue design of roadway landscaping for N1-CCNW
4. Contract for eradication of apple snails at Regional Pond 1 on N1-CCNW
5. Continue Coordination Meetings on Capital Cascade Trail
6. Complete acquisition activities for E2-CCSE

Significant Issues and Resolutions:

ISSUE

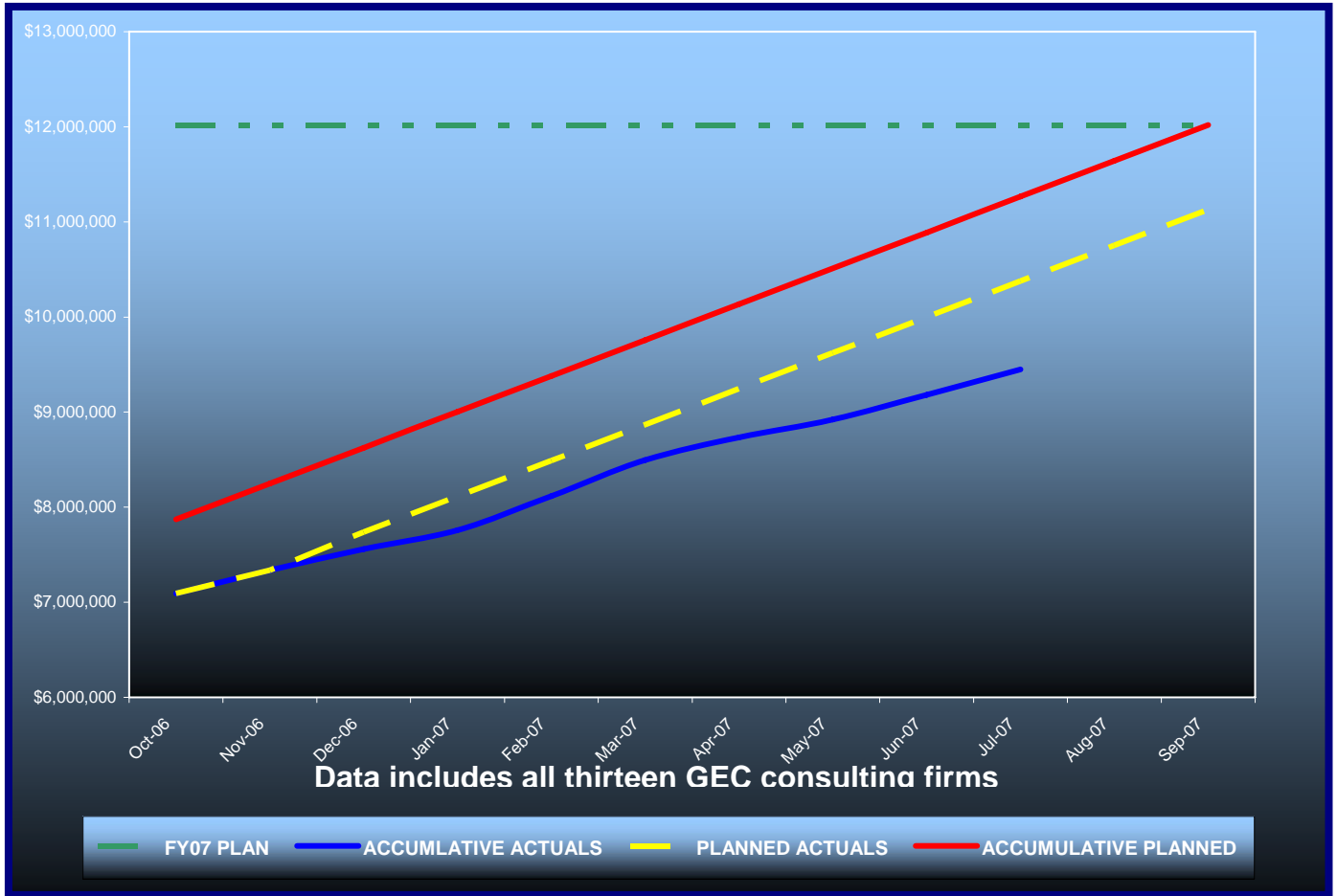
E2-CCSE City/St. Joe JPA coordination needed prior to Leon County Growth Management permit for clearing.

RESOLUTION

Coordinating with COT and St. Joe to resolve issues.

GEC – GENERAL ENGINEERING CONSULTANT

GEC Contract Financial Summary of Planned Vs. Actual Costs – FISCAL YEAR 2007



GEC – PUBLIC INVOLVEMENT

Activities Since Last Period:

1. Organized and held Public Meeting for E3-CCSE
2. Organized and held Public Information Meeting for E2-CCSE
3. Prepared press release for Monday Street road closure for E1-CCSE
4. Prepared display ad for Monday Street road closure for E1-CCSE
5. Prepared Cascade Park display boards for Tallahassee Chamber Retreat
6. Organized and attended Community Representative Meeting for W1-CCSW
7. Attended Pre-Construction Conference for E2-CCSE
8. Coordination for restructuring of Blueprint 2000 web site
9. Developed navigational structure for web site
10. Prepared and distributed invitation for Groundbreaking Ceremony for E2-CCSE

Planned Activities for Next Period:

1. Organize and hold Groundbreaking Ceremony for E2-CCSE
2. Organize and hold Ribbon Cutting Ceremony for E2-CCSE
3. Prepare GEC Annual Performance Report
4. Continue to coordinate restructuring of web site
5. Develop new project location map
6. Prepare presentation for ITE Meeting
7. Prepare and distribute press release for bond rating upgrade

N1 - CAPITAL CIRCLE NW – I-10 TO US 90

Project Description:

The proposed 1.991-mile roadway project (FPID: 219722-1) consists of upgrading the existing undivided rural facility to a six-lane divided urban (curb and gutter) facility. Upgrades to the West Tennessee, Tharpe, Hartsfield and Commonwealth intersections will also be included. The purpose of the roadway improvement project is to increase the capacity and safety of the existing highway. The roadway project was designed, let and constructed by the Florida Department of Transportation, with advance funding provided by the Blueprint 2000 Intergovernmental Agency.

CCNW – Looking North at Commonwealth Boulevard Intersection



N1 - CAPITAL CIRCLE NW - I-10 TO US 90

| MONTHLY PROJECT STATUS REPORT | | | | | | |
|--|---|-----------|---------------------------|--------------------------|--|---------------|
| Week Ending 08/05/2007 | | | | | | |
| PROJECT ADMINISTRATION INFORMATION | | | | | | |
| FINANCIAL PROJECT NO.: | 219722-1-52-01 & 02 | | | RESIDENT ENGINEER: | Steve Martin, P.E. | |
| CONTRACT NO.: | T3154 | | | PROJECT ADMINISTRATOR: | Jerry McClure | |
| FEDERAL AID NO.: | N/A | | | CONTRACTOR: | M of Tallahassee, Inc. | |
| ORIGINAL CONTRACT AMOUNT (A) Bid: | \$25,462,923.43 | | | CURRENT CONTRACT AMOUNT: | \$25,364,756.84 | |
| COUNTY: | LEON | | | DESIGN FIRM | FDOT Roadway Design | |
| DESCRIPTION: | SR 263 (Capital Circle NW) from a Pt S of SR 10 (US90/W Tennessee St) to the SR 8 (I-10) West ramp | | | | | |
| CONTRACT TIME SUMMARY | | | PROGRESS SUMMARY | | CURRENT | PREVIOUS |
| ORIGINAL DAYS | 825 | | PLANNED | 82.20% | | 78.81% |
| WEATHER | 30 | | ACTUAL | 92.98% | | 89.07% |
| GRANTED (S.A.) | 0 | | CONTRACT TIME USED | 79.42% | | 76.14% |
| GRANTED (F.S.A.) | 0 | | EXPLANATION: | | | |
| GRANTED (OTHER) | 0 | | | | | |
| TOTAL CONTRACT | 855 | | | | | |
| DAYS USED | 679 | | DATE SUMMARY | | | |
| TOTAL REMAINING | 176 | | CONTRACT EXECUTED | 8/15/2005 | | |
| SUSPENSION DAYS | 0 | | NOTICE TO PROCEED | 9/14/2005 | | |
| PENDING DAYS | 0 | | CONTRACT START DATE | 9/26/2005 | | |
| NUMBER OF AVAILABLE WORK DAYS THAT CONTRACTOR ELECTED TO PERFORM NO WORK | 176 | | DATE WORK STARTED | 9/26/2005 | | |
| | | | ANTICIPATED FINAL ACCEPT. | 9/7/2007 | | |
| | | | CONTRACT TIME EXPIRATION | 12/29/2007 | | |
| GRANTED DAYS SUMMARY | | | | | | |
| STATUS | REASON | | | NUMBER OF DAYS | | |
| Approved | Weather Days Granted by Weather Letter No. 3 | | | 3 | | |
| Approved | Weather Days Granted by Weather Letter No. 4 | | | 4 | | |
| Approved | Weather Days Granted by Weather Letter No. 5 | | | 2 | | |
| Approved | Weather Days Granted by Weather Letter No. 6 | | | 1 | | |
| Approved | Weather Days Granted by Weather Letter No. 8 | | | 4 | | |
| Approved | Weather Days Granted by Weather Letter No. 10 | | | 4 | | |
| Approved | Weather Days Granted by Weather Letter No. 13 | | | 4 | | |
| Approved | Weather Days Granted by Weather Letter No. 15 | | | 3 | | |
| Approved | Weather Days Granted by Weather Letter No. 16 | | | 3 | | |
| Approved | Weather Days Granted by Weather Letter No. 17 | | | 2 | | |
| TOTAL NUMBER OF DAYS | | | | 30 | | |
| SUPPLEMENTAL AGREEMENT SUMMARY | | | | | | |
| SA # | # DAYS | Sub. Date | Exe. Date | Status | Reason/Description | Amount |
| 999-25-01 | 0 | 5/8/2006 | 5/30/2006 | Approved | Additional Erosion Control Measures | \$1,868.45 |
| 999-25-02 | 0 | 6/5/2006 | 6/13/2006 | Approved | Add'l Pay Items for Removable Work Zone Pavement Markings. | \$43,430.00 |
| 999-25-03 | 0 | 7/13/2006 | 7/17/2006 | Approved | Temporary Drainage Structures & Pipe | \$33,580.00 |
| 999-25-04 | 0 | 7/14/2006 | 7/17/2006 | Approved | Relocation of Double-Post Sign | \$2,453.00 |
| 999-25-07 | 0 | 3/12/2007 | 3/21/2007 | Approved | Removal of Existing Box Culvert | \$22,979.49 |
| 006 | 0 | 8/1/2006 | 7/21/2006 | Approved | July 2005 Asphalt Specification Change | -\$23,382.06 |
| 009 | 0 | 9/7/2006 | 9/25/2006 | Approved | Unilateral Pymt. - Add'l MOT | \$19,238.72 |
| 008 | 0 | 9/14/2006 | 10/3/2006 | Approved | RWZPM's | \$20,921.80 |
| 012 | 0 | 1/8/2007 | 1/30/2007 | Approved | Additional Water & Sewer Utilities | \$21,005.00 |
| 013 | 0 | 1/6/2007 | 1/29/2007 | Approved | Base Group 9 - Limerock | -\$132,971.25 |
| 016 | 0 | 3/6/2007 | 3/6/2007 | Approved | Type 1 Underdrain | \$56,000.00 |
| 017 | 0 | 3/15/2007 | 3/13/2007 | Approved | Contingency Supplemental Agreement | \$150,000.00 |
| 018 | 0 | 4/4/2007 | 3/23/2007 | Approved | Add'l Sewer Services - COT - @ Carroll's Boot Country | \$15,675.00 |
| 019 | 0 | 7/30/2007 | | Pending | Roadway Construction Limit & Pay Item Adj. | -\$224,653.80 |
| Total Supplemental Agreement Amount-to-Date (Does not include FSA/WO) | | | | | | -\$98,166.59 |

N1 - CAPITAL CIRCLE NW – I-10 TO US 90

CCNW Looking South from Hartsfield Road Intersection



**CCNW
Placing Friction-Course
Asphalt at CCNW /
Tennessee Street
Intersection**

N1 - CAPITAL CIRCLE NW – I-10 TO US 90

CCNW Completed Stormwater Facility Regional Pond 1



CCNW Permanent Type-1 Trash Capture Floating Turbidity Barrier Installed at Double Box Culvert (Regional Pond 1)



N1 - CAPITAL CIRCLE NW – I-10 TO US 90

Project Status:

As of August 5th, 2007: (next Monthly Progress Payment cutoff is 8/19/07)

679 of 855 Total Contract Days have been used (855 Total Days include 30 Weather Days granted to date);

Planned Progress = 82.20%

Actual Progress = 92.98%

Contract Time used = 79.42%

Contract Executed on 8/15/05;

Notice To Proceed on 9/14/05;

Contract Start Date on 9/26/05;

Anticipated Final Acceptance = 9/7/07 (*)

Contract Time expiration = 12/29/07(*)

(*) The Contractor is ahead of schedule and is pursuing an early-finish incentive contract bonus, and is hoping to complete the project by the first week in September, 2007.

Original Contract Amount = \$25,462,923.43

Current Contract Amount = \$25,364,756.84

Supplemental Agreement Amount to Date = -\$98,166.59

Right-Of-Way Status Report:

| | |
|-----------------------------------|------------|
| CLOSED - (IN POSSESSION) | 100 |
| AGREEMENTS SECURED BUT NOT CLOSED | 21 |
| DONATION | 4 |
| NEGOTIATING/PREPARING FOR SUIT | 0 |
| TOTAL PARCELS ON PROJECT | 125 |

As of August 2007 FDOT reported:

1. Right of Way cost expended so far is approximately \$44,977,288
2. There are 20 parcels remaining to be settled through mediation
3. The total Right-of-Way cost is estimated to be \$47,831,058

N2 - CAPITAL CIRCLE NW/SW – SR 371 (ORANGE AVE.) TO US 90

Project Description:

The Expanded Project Development and Environment (PD&E) Study limits for this 2.9 mile project extend from Tennessee Street (US 90/SR 10) to Orange Avenue (SR 371). The purpose of this roadway improvement project is to increase the capacity and safety of the existing highway by expanding the existing two-lane undivided rural roadway to a six-lane divided urban (curb and gutter) facility. New traffic signals will be provided at Orange Avenue, Blountstown Highway and Gum Road Intersections. The project also includes significant landscaping as well as pedestrian, bicycle and recreational amenities. This project will develop final design plans for construction.

Project Personnel:

| | | |
|------------------------|-------------------------|----------------------------|
| Blueprint 2000: | Program Manager: | Steve Nichols |
| | Project Manager: | Marek Romanowski (Interim) |
| H.W. Lochner: | Project Manager: | Hugh Williams |

Contract Cost & Schedule Status - Agreement No. 772/Authorization 1 - As of 8/15/2007

| | |
|----------------------------|---------|
| Contract Commencement: | 10May04 |
| Contract Completion: | 10May07 |
| Percent of Work Performed: | 76.3% |

| | | |
|--------------------------------------|----|--------------|
| Original Contract Amount: | \$ | 1,921,585.90 |
| Executed Supplemental Agreements: | \$ | 1,195,430.90 |
| Pending Supplemental Agreements: | \$ | 0.00 |
| Current Contract Amount: | \$ | 3,117,016.80 |
| Invoiced to Date: | \$ | 2,672,911.45 |
| Remaining Contract Amount: | \$ | 444,105.35 |
| Percent of Contract Amount Complete: | | 85.8% |

| | |
|---------------------------------|-----------|
| Original Contract Time: | 1095 Days |
| Contract Time Extensions: | 160 Days |
| Current Contract Time: | 1255 Days |
| Contract Time Expended: | 1192 Days |
| Contract Time Remaining: | 63 Days |
| Percent Contract Time Expended: | 95.0% |

Schedule Milestones:

| | |
|---|---------|
| 30% Roadway Plans | 28Aug06 |
| Final Environmental Documents | 20Jun06 |
| Final Preliminary Engineering Report | 20Jun06 |
| 60% Roadway Plans | 20Apr07 |
| 2nd Draft ROW Maps | 30Apr07 |
| Final ROW Maps | 30Sep07 |
| Location Design Concept Approval (LDCA) | 22Aug06 |
| VE Complete | 27Oct06 |

N2 - CAPITAL CIRCLE NW/SW – SR 371 (ORANGE AVE.) TO US 90

| Design Subconsultant Participation: | Contract Amt | % of Design Contract | ETD | YTD |
|---|---------------------|-----------------------------|-----------------|-----------------|
| <i>Environmental Geotechnical Specialists</i> | | | | |
| <i>Geotechnical</i> | \$ 444,860.75 | 14.27 | \$ 335,783.10 | \$ 278,851.92 |
| <i>Diversified Design & Drafting Services, Inc.</i> | | | | |
| <i>Survey and R/W Mapping</i> | \$ 688,044.64 | 22.07 | \$ 602,088.46 | \$ 412,801.37 |
| <i>Archaeological Consultants, Inc.</i> | | | | |
| <i>Cultural Resource Assessment</i> | \$ 19,588.27 | 0.63 | \$ 10,947.15 | \$ 547.36 |
| <i>HNTB/TEI</i> | | | | |
| <i>Traffic Analysis</i> | \$ 90,310.59 | 2.90 | \$ 90,310.59 | \$ 11,606.21 |
| <i>American Acquisition Group</i> | | | | |
| <i>Right of Way</i> | \$ 97,873.48 | 3.14 | \$ 94,046.22 | \$ 8,071.70 |
| <i>HW LOCHNER (PRIME)</i> | | | | |
| <i>Prime Consultant</i> | \$ 1,776,339.07 | 56.99 | \$ 1,539,735.93 | \$ 876,689.76 |
| <hr/> | | | | |
| Total Design Contract: | \$ 3,117,016.80 | 100.00% | \$ 2,672,911.45 | \$ 1,588,568.32 |

| | | |
|----------------------------|----------------------|---------------|
| Design MBE Goal: | \$ 483,137.60 | 15.50% |
| Design MBE to Date: | \$ 948,818.71 | 35.50% |

Project Status:

Conducting pond and mitigation analysis and design. Pond and mitigation area surveys continue. Preliminary geotechnical investigations for road design and structures are underway. Fifty percent roadway plans were submitted to Blueprint on 5/10/2007. Lochner is now proceeding toward full 60% plans submittal in October, 2007. Lochner initiated utility coordination by sending plans to utility companies and conducting utility coordination meeting on 8/02/07.

Right-of-Way acquisition process is on-going.

N2 - CAPITAL CIRCLE NW/SW – SR 371 (ORANGE AVE.) TO US 90

Activities Since Last Period:

1. Lochner responded to 50% plans review comments, updated roadway plans and continued to develop full 60% plans submittal
2. Continued analysis and design of the pond and mitigation sites
3. Continued boundary and topo survey and geotechnical investigation at the mitigation sites
4. Resubmitted the Natural Features Inventory report based review comments
5. Lochner responded to Blueprint's pavement design comments and prepared final package for submission to FDOT
6. Initiated utility coordination by sending plans to utility companies and conducting utility coordination meeting on 8/02/07
7. Lochner submitted final CSX Railroad Bridge Development Report (BDR) to Blueprint
8. Lochner continued work on ROW map revisions, parcel legal descriptions and sketches

Planned Activities for Next Period:

1. Complete preparation of revised roadway and pond ROW documents and submit to Blueprint
2. Complete survey and geotechnical field work and report preparation
3. Continue to assist with ROW acquisition
4. Submit the pavement design package to FDOT after final Blueprint comments resolution
5. Continue the pond and mitigation design and permit package
6. Continue utility coordination
7. Prepare applications for the FDEP Stormwater and Wetland Resource permits and continue preparation of the Environmental Impact Assessment (EIA)
8. Finalize the Gum Creek Bridge Hydraulic Report and Bridge Development Report

Significant Issues and Resolutions:

ISSUE

Regional Pond #1

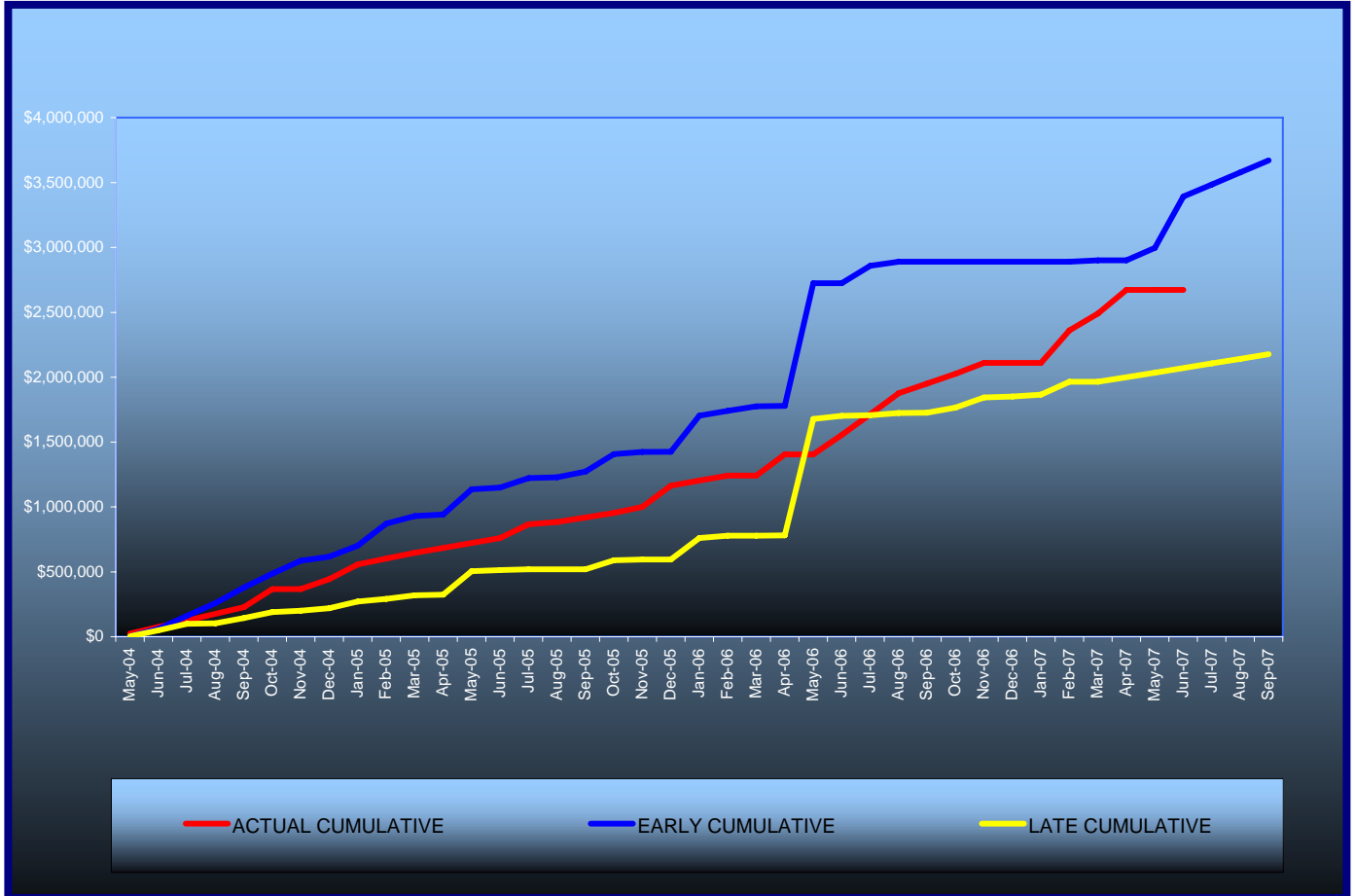
Additional compensating treatment volume will be needed to cover from CSX RR to Shuler Rd.

RESOLUTION

Determining the treatment volume needed through coordination with DEP and County Growth Management

N2 - CAPITAL CIRCLE NW/SW – SR 371 (ORANGE AVE.) TO US 90

Contract Financial Summary of Planned Vs. Actual Costs



N2 - CAPITAL CIRCLE NW/SW – SR 371 (ORANGE AVE.) TO US 90

Right-Of-Way Status Report:

| | |
|-----------------------------------|-----|
| CLOSED - (IN POSSESSION) | 2 |
| AGREEMENTS SECURED BUT NOT CLOSED | 0 |
| DONATION | 0 |
| NEGOTIATING/PREPARING FOR SUIT | 136 |
| TOTAL PARCELS ON PROJECT | 138 |

Blueprint has received parcel appraisals and the review appraisals on this project this month. Offers on these parcels will begin this month.

W1 - CAPITAL CIRCLE SW – CRAWFORDVILLE ROAD TO SR 20

Project Description:

A Project Development and Environment (PD&E) Study of Capital Circle (SR 263) between Crawfordville Road (SR 61 US 319) and Blountstown Highway (SR 20) a distance of approximately 6.7 miles. The PD&E study is being conducted in accordance with Federal Highway Administration (FHWA), Blueprint 2000 Agency, and Florida Department of Transportation (FDOT) guidelines. The study evaluates alternative alignments as well as the existing alignment. Several viable alternatives are being developed and evaluated in order to address the project needs while taking into account the Blueprint 2000 & Beyond "Project Definitions Report", prepared by the Economic and Environmental Consensus Committee in 1999, and the Lake Bradford Sector Plan, conducted by the Tallahassee/Leon County Planning Department.

Project Personnel:

| | | |
|----------------------------------|--------------------------|----------------------------|
| Blueprint 2000: | Planning Manager: | Dave Bright |
| | Project Manager: | Gary Phillips (Interim) |
| Kimley-Horn & Assoc.: | Project Manager: | Steve Godfrey/Raymond Ashe |

Contract Cost & Schedule Status - Agreement No. 1284/Authorization 1 - As of 8/15/2007

| | |
|----------------------------|---------|
| Contract Commencement: | 22Aug06 |
| Contract Completion: | 22Aug09 |
| Percent of Work Performed: | 38.8% |

| | |
|--------------------------------------|-----------------|
| Original Contract Amount: | \$ 2,672,271.68 |
| Executed Supplemental Agreements: | \$ 0.00 |
| Pending Supplemental Agreements: | \$ 0.00 |
| Current Contract Amount: | \$ 2,672,271.68 |
| Invoiced to Date: | \$ 1,031,864.79 |
| Remaining Contract Amount: | \$ 1,640,406.89 |
| Percent of Contract Amount Complete: | 38.6% |

| | |
|---------------------------------|-----------|
| Original Contract Time: | 1096 Days |
| Contract Time Extensions: | 0 Days |
| Current Contract Time: | 1096 Days |
| Contract Time Expended: | 358 Days |
| Contract Time Remaining: | 738 Days |
| Percent Contract Time Expended: | 32.7% |

Schedule Milestones:

| | |
|---|---------|
| Consultant Selected | 26May06 |
| Study Begins | 22Aug06 |
| Agency Kick-off Meeting | 19Oct06 |
| Public Kick-off Meeting | 19Oct06 |
| Community Mini-Charrettes | 15Jan07 |
| Community Meeting | 12Apr07 |
| Corridor/Concepts Charrette | 10May07 |
| Alternatives Public Information Meeting | 07Apr08 |
| Preferred Alternative Public Meeting | 10Dec08 |
| Public Hearing | 01Jun09 |

W1 - CAPITAL CIRCLE SW – CRAWFORDVILLE ROAD TO SR 20

| Design Subconsultant Participation: | Contract Amt | % of Design Contract | Expended To Date | Year To Date |
|--|---------------------|-----------------------------|-------------------------|---------------------|
| Target Copy and Sign Printers | | | | |
| <i>Printing</i> | \$ 30,000.00 | 1.12 | \$ 20,542.18 | \$ 20,542.18 |
| Keystone Field Services | | | | |
| <i>Relocation</i> | \$ 35,000.00 | 1.31 | \$ 0.00 | \$ 0.00 |
| Environmental and Geotechnical Specialists | | | | |
| <i>Geotech</i> | \$ 59,830.00 | 2.24 | \$ 20,068.35 | \$ 20,068.35 |
| Diversified Design & Drafting Services | | | | |
| <i>Survey</i> | \$ 127,874.94 | 4.79 | \$ 0.00 | \$ 0.00 |
| StategyWise, LLC | | | | |
| <i>Economic Development</i> | \$ 19,500.00 | 0.73 | \$ 0.00 | \$ 0.00 |
| Hamilton Smith Assoc. | | | | |
| <i>Traffic</i> | \$ 18,600.00 | 0.70 | \$ 18,600.00 | \$ 18,600.00 |
| Registe, Sliger Engineering | | | | |
| <i>Structures</i> | \$ 123,376.71 | 4.62 | \$ 27,266.25 | \$ 16,779.23 |
| KIMLEY-HORN & ASSOC (PRIME) | | | | |
| <i>Prime</i> | \$ 1,596,614.64 | 59.75 | \$ 685,604.47 | \$ 634,991.79 |
| Dr. Wayson | | | | |
| <i>Noise</i> | \$ 30,147.25 | 1.13 | \$ 0.00 | \$ 0.00 |
| Hass Center | | | | |
| <i>Economic Development</i> | \$ 37,200.00 | 1.39 | \$ 0.00 | \$ 0.00 |
| Florida Acquisition & Appraisal | | | | |
| <i>Appraisal/Acquisition</i> | \$ 235,804.91 | 8.82 | \$ 95,331.91 | \$ 95,331.91 |
| Biological Research Assoc. | | | | |
| <i>Water Quality</i> | \$ 105,815.50 | 3.96 | \$ 49,116.64 | \$ 49,116.64 |
| Search, Inc | | | | |
| <i>Cultural Resource/Archaeological</i> | \$ 53,826.73 | 2.01 | \$ 0.00 | \$ 0.00 |
| Camp, Dresser & McKee | | | | |
| <i>Drainage & Pond Design</i> | \$ 198,681.00 | 7.43 | \$ 115,334.99 | \$ 115,334.99 |
| <hr/> | | | | |
| Total Design Contract: | \$ 2,672,271.68 | 100.00% | \$ 1,031,864.79 | \$ 970,765.09 |

| | | |
|---------------------|---------------|--------|
| Design MBE Goal: | \$ 414,202.11 | 15.50% |
| Design MBE to Date: | \$ 86,476.78 | 8.38% |

W1 - CAPITAL CIRCLE SW – CRAWFORDVILLE ROAD TO SR 20

Project Status:

Kimley-Horn and Associates began the Capital Circle Southwest PD&E study in late August, 2006. The Public and Agency Kickoff Meetings were conducted in October, 2006. Six Community Forum Meetings were conducted concluding with a Town Hall Meeting held in April, 2007. The Concept Charrettes were held on May 10th and 12th, 2007. Eight Community Representatives meetings have been held through the month of August 2007. The project has begun the analysis phase using the alternatives alignments established through the Concept Charrette process.

Activities Since Last Period:

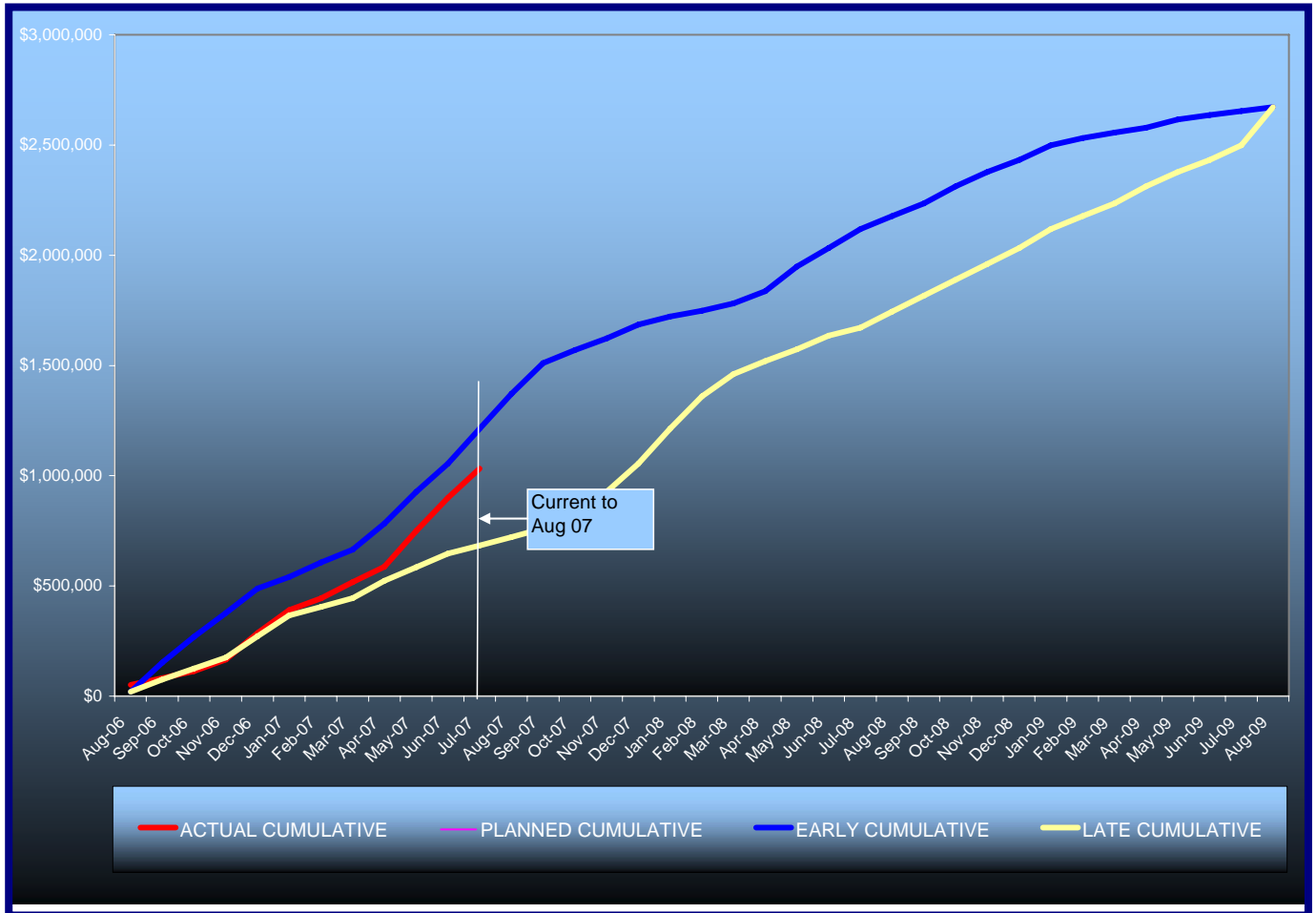
1. Updated Web Site
2. Completed evaluation criteria weights
3. Continued refinement of alternative alignments
4. Continued evaluating stormwater treatment locations
5. Conducted Community Representative meeting #8 on August 9 and presented alternative alignments and evaluation criteria weighting
6. Documentation of corridor analysis and identification
7. Continued environmental field reviews and evaluations
8. Coordinated traffic forecasting/modeling with CRTPA
9. Began preparation of environmental documentation

Planned Activities for Next Period:

1. Coordinate with FDOT District 3 and FHWA on project status
2. Continue preparation of environmental documents
3. Continue data collection for socio-economic and physical features
4. Updating ETDM screen and submit for Advanced Notification (AN) and Class of Action Determination
5. Prepare Typical Section Package for review and approval by Blueprint and FDOT
6. Continue intersection and access analysis
7. Continue work on water quality report and contamination screening report
8. Continue the identification of preliminary Stormwater treatment locations
9. Prepare for and attend TCC/CAC and IA meetings

W1 - CAPITAL CIRCLE SW – CRAWFORDVILLE ROAD TO SR 20

Contract Financial Summary of Planned Vs. Actual Costs



E3 - CAPITAL CIRCLE SE – WOODVILLE HWY TO CRAWFORDVILLE RD

Project Description:

This project proposes to widen approximately 1.53 miles of the existing two-lane Capital Circle SE from Woodville Highway to Crawfordville Road to an ultimate multi-lane urban facility.

FDOT Roadway ID: 55002000 SR 263 from MP 0.200 to MP 1.730.

Project Personnel:

| | | |
|-------------------------|-------------------------|------------------|
| Blueprint 2000: | Design Manager: | Marek Romanowski |
| | Project Manager: | Gary Phillips |
| URS Corporation: | Project Manager: | Chris Lovett |

Contract Cost & Schedule Status - Agreement No. 1167/Authorization 1 - As of 8/13/2007

| | |
|--------------------------------------|---------------|
| Contract Commencement: | 02Feb06 |
| Contract Completion: | 12Sep07 |
| Percent of Work Performed: | 95.0% |
| Original Contract Amount: | \$ 885,689.21 |
| Executed Supplemental Agreements: | \$ 49,905.00 |
| Pending Supplemental Agreements: | \$ 0.00 |
| Current Contract Amount: | \$ 935,594.21 |
| Invoiced to Date: | \$ 856,617.16 |
| Remaining Contract Amount: | \$ 78,977.05 |
| Percent of Contract Amount Complete: | 91.6% |
| Original Contract Time: | 587 Days |
| Contract Time Extensions: | 0 Days |
| Current Contract Time: | 587 Days |
| Contract Time Expended: | 461 Days |
| Contract Time Remaining: | 126 Days |
| Percent Contract Time Expended: | 94.9% |

Schedule Milestones:

| | |
|--|---------|
| Selection of Design Consultant | 16Aug05 |
| IA authorizes Blueprint to execute Contract with Design Consultant | 19Sep05 |
| Contract and LOA#1 are executed | 02Feb06 |
| Submit Typical Section Package | 06Mar06 |
| Submit Pond Siting Report | 05Jun06 |
| Submit ROW Control Survey Maps | 03Jul06 |
| Submit Phase I Plans | 24Oct06 |
| Submit Pavement Design Package | 02Nov06 |
| Submit Phase II Plans | 20Mar07 |
| Submit Phase II ROW Maps | 20Mar07 |
| Revise and Finalize Phase II Plans | 07May07 |
| Submit Phase III (90%) ROW Maps | 11Jun07 |
| Submit Phase IV (100%) ROW Maps | 09Jul07 |

E3 - CAPITAL CIRCLE SE – WOODVILLE HWY TO CRAWFORDVILLE RD

| Design Subconsultant Participation: | Contract Amt | % of Design Contract | Expended To Date | Year To Date |
|--|---------------------|-----------------------------|-------------------------|---------------------|
| EGS | | | | |
| <i>Geotechnical</i> | \$ 67,411.46 | 7.21 | \$ 59,209.30 | \$ 59,209.30 |
| ACI | | | | |
| <i>Cultural Resources</i> | \$ 8,153.18 | 0.87 | \$ 0.00 | \$ 0.00 |
| Mehta | | | | |
| <i>Survey</i> | \$ 91,944.24 | 9.83 | \$ 91,944.24 | \$ 91,944.24 |
| DRMP | | | | |
| <i>Survey and Mapping</i> | \$ 204,310.03 | 21.84 | \$ 155,559.10 | \$ 155,559.10 |
| URS (Prime) | | | | |
| <i>Design, Environmental, Signalization, Landscaping</i> | \$ 563,775.30 | 60.26 | \$ 549,904.52 | \$ 549,904.52 |
| <hr/> | | | | |
| Total Design Contract: | \$ 935,594.21 | 100.00% | \$ 856,617.16 | \$ 856,617.16 |

| | | |
|---------------------|---------------|--------|
| Design MBE Goal: | \$ 145,017.10 | 15.50% |
| Design MBE to Date: | \$ 151,153.54 | 17.65% |

Project Status:

Contract and Letter of Authorization was executed on February 2, 2006
 Part A - 60% design plans - total cost is \$935,594.21

Activities Since Last Period:

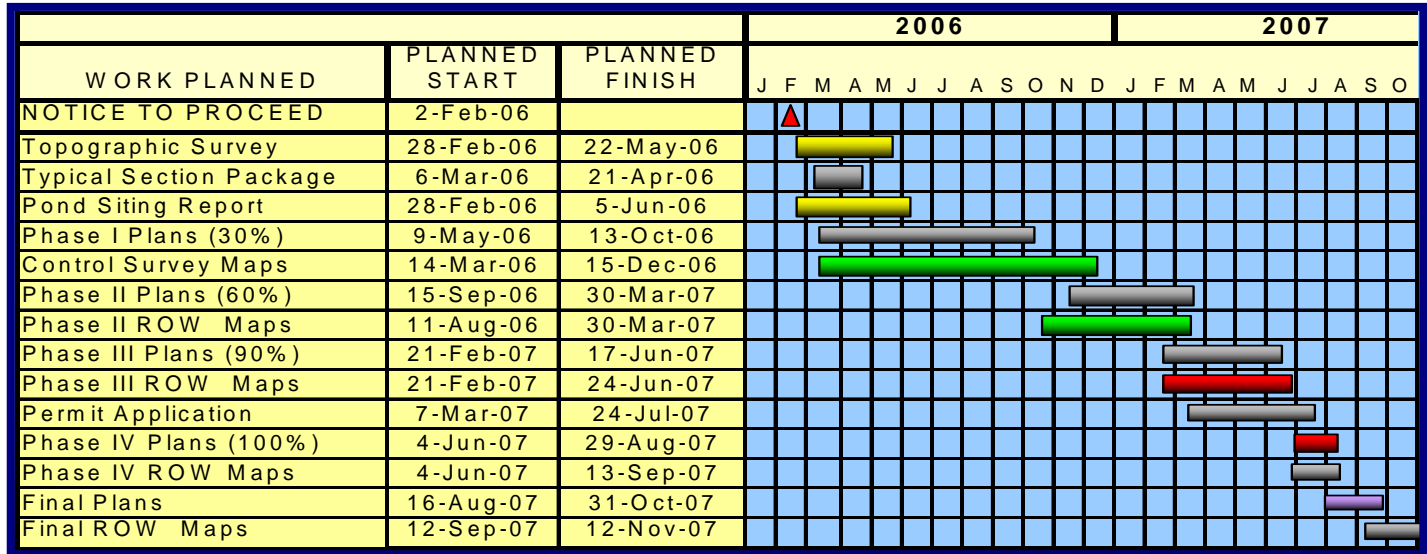
1. Conducted Public Meeting on July16 and presented 60% design plans and right-of-way maps and showed video
2. USFS completed Biological Evaluation for easement application and submitted to USFWS for review and comment
3. Reviewed and commented on 90% Right-of-Way maps
4. Responded to public comments received from public meeting
5. URS submitted supplemental agreement for review and approval

Planned Activities for Next Period:

1. Submit Phase IV(100%) Right-of-Way maps, legal descriptions and parcel sketches
2. Submit 60% design plans
3. Complete final invoicing and close-out project

E3 - CAPITAL CIRCLE SE – WOODVILLE HWY TO CRAWFORDVILLE RD

Schedule



Right-Of-Way Status Report:

Right-of-Way maps are at 90% and are under review. We are in the position to begin acquiring Right-of-Way as funding becomes available.

FHWA Easement Deed to be completed by December 2007.

USFS Legislation (HR 5725) that would allow the USFS to sell the Tract of land directly to a public or private entity was not acted upon by the 109th Congress. Blueprint was informed that this legislation must be "reintroduced" to the new 110th Congress and that this process was underway.

E2 - CAPITAL CIRCLE SE – WOODVILLE HIGHWAY TO TRAM ROAD

Project Personnel:

| | | |
|-----------------------------|------------------------------|------------------|
| Blueprint 2000: | Project Manager: | Marek Romanowski |
| | Construction Manager: | Marcus Kelly |
| Sandco Inc./Genesis: | Project Manager: | Charles Fields |
| | Design PM: | Dave Snyder |

Contract Cost & Schedule Status - Agreement No. 1464

| | |
|--------------------------------------|------------------|
| Contract Commencement: | |
| Contract Completion: | |
| Percent of Work Performed: | 0.0% |
| Original Contract Amount: | \$ 17,616,609.90 |
| Executed Supplemental Agreements: | \$ 0.00 |
| Pending Supplemental Agreements: | \$ 0.00 |
| Current Contract Amount: | \$ 17,616,609.90 |
| Invoiced to Date: | \$ 0.00 |
| Remaining Contract Amount: | \$ 17,616,609.90 |
| Percent of Contract Amount Complete: | 0.0% |
| Original Contract Time: | 0 Days |
| Contract Time Extensions: | 0 Days |
| Current Contract Time: | 0 Days |
| Contract Time Expended: | 0 Days |
| Contract Time Remaining: | 0 Days |
| Percent Contract Time Expended: | |

Project Description:

This project includes widening approximately 2.2 miles of the existing two-lane Capital Circle SE from Woodville Highway to Tram Road to an ultimate six-lane facility, mileposts 0.0 to 2.12. In addition, a transitional segment west of Woodville Highway (SR 263 MP 0.0 to approximately MP 0.2).

Schedule Milestones:

| | |
|--------------------|---------|
| Execute Contract | 15May07 |
| Partnering Meeting | 07Jun07 |

E2 - CAPITAL CIRCLE SE – WOODVILLE HIGHWAY TO TRAM ROAD

Project Status:

The Design-Build Contract was fully executed on 6/05/07. Utility kick-off meeting was held on 6/27/07. The Pre-construction Conference and the Public Meeting were held on 7/24/07. The initial environmental work was done in preparation for permit submissions. The National Features Inventory (NFI) report was approved by the COT Growth Management. The COT Growth Management issued the Environmental Impact Assessment exemption [EIA short form B (low)] for Segment 1 and the DB Team applied for Clearing Permit for Segment 1, including "sediment sumps" (i.e. future stormwater ponds). The DB Team is in the process of preparation of the Environmental Management Permit application for submission to COT Growth Management and the Stormwater Permit application for submission to the Department of Environmental Protection. Joint Project Agreement (JPA) was entered into by St. Joe Company, City of Tallahassee and Blueprint 2000 on 7/31/07. Per terms of this JPA, easements for five drainage ponds and Right-of-Way donated by St. Joe were obtained.

Activities Since Last Period:

1. Blueprint coordinated pre-construction activities with CEI
2. Obtained executed JPA with St. Joe Company and COT
3. Design Build Team obtained NFI approval from COT Growth Management
4. Blueprint and Design Team coordinated access issues with property owners at various locations
5. Blueprint obtained executed JPA with FDOT
6. Blueprint conducted negotiations and finalized property agreement with COT Electric Utility - obtained easements at three crossings with COT Electric transmissions lines
7. The pre-construction conference and public meeting were held on 7/24/07
8. DB Team submitted permit application to COT Growth Management

Planned Activities for Next Period:

1. Receive schedule from Sandco/Genesis and perform initial schedule review to establish project baseline
2. Establish timetable for regular design reviews
3. Negotiate manhours for CE&I firm and execute Letter of Authorization for CE&I work
4. Issue Notice To Proceed
5. Conduct Ground Breaking Ceremony on 8/29/07

Significant Issues and Resolutions:

ISSUE

The COT Engineering Department requested price proposals for a permanently installed irrigation system along the corridor of CCSE from Woodville Highway to Tram Road.

RESOLUTION

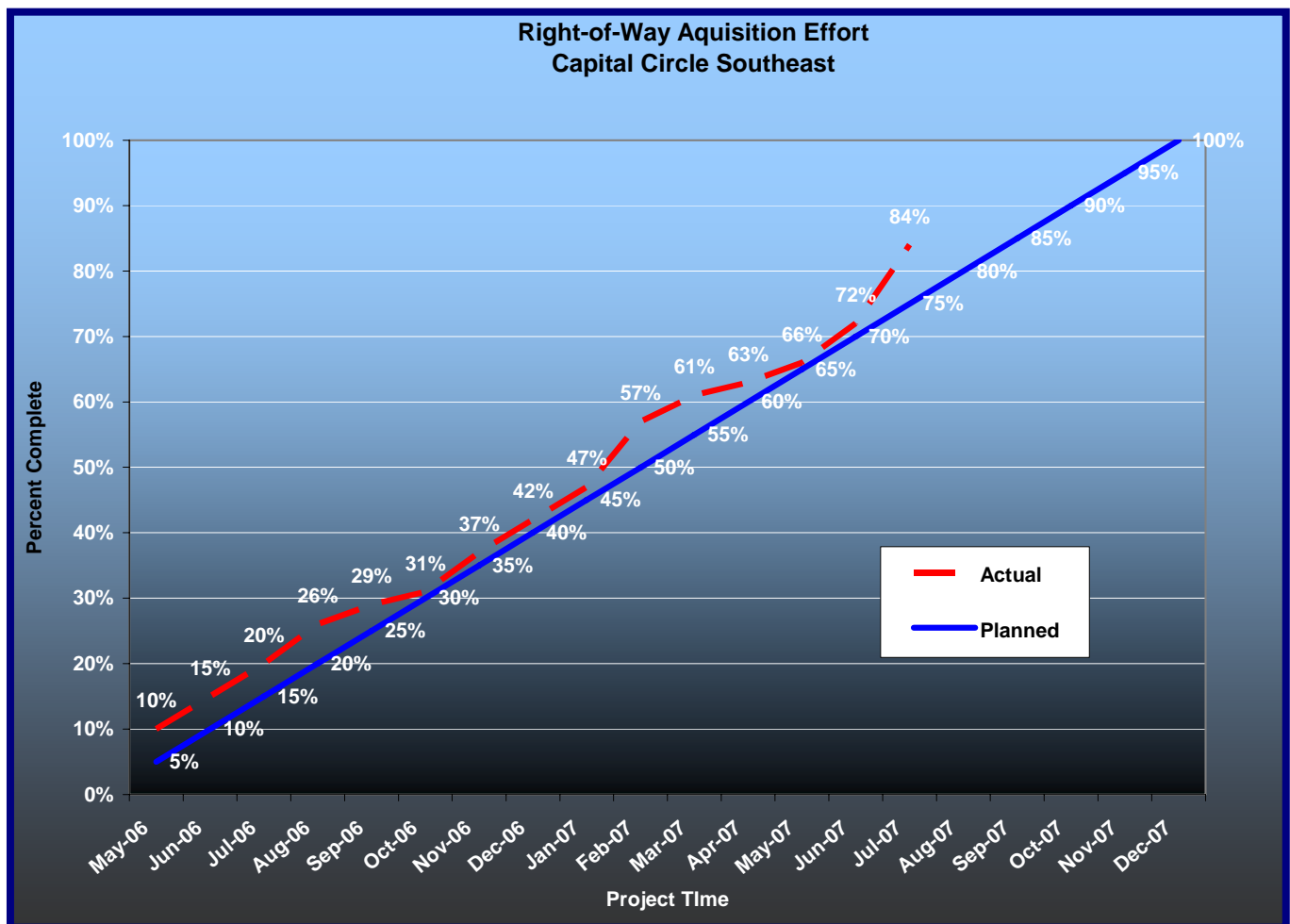
Blueprint 2000 requested, on the City's behalf, a price proposal from Sandco/Genesis. A price proposal has been received. Subsequently Blueprint 2000 has asked for a more detailed price proposal which has been provided by Sandco, and which is currently under review by COT Engineering Department. Blueprint will continue to monitor the Issue and will prepare a supplemental agreement for additional work for irrigation system once the agreement between Sandco and the City has been reached.

E2 - CAPITAL CIRCLE SE – WOODVILLE HIGHWAY TO TRAM ROAD

Right-Of-Way Status Report:

| | |
|-----------------------------------|----|
| CLOSED - (IN POSSESSION) | 9 |
| AGREEMENTS SECURED BUT NOT CLOSED | 0 |
| DONATION | 5 |
| NEGOTIATING/PREPARING FOR SUIT | 11 |
| TOTAL PARCELS ON PROJECT | 25 |

We are in possession of 14 of the 25 parcels needed. Offers have been made on all remaining parcels needed for this project and negotiations are on going.



E1 - CAPITAL CIRCLE SE – TRAM ROAD TO CONNIE DRIVE

Project Description:

The proposed 3.44-mile project along Capital Circle Southeast (US 319/SR261) extends from south of Tram Road to Connie Drive (milepost 1.931 and 5.371) in Leon County and includes expanding the existing two-lane undivided rural roadway to a six-lane divided urban (curb and gutter) facility. The purpose of the roadway improvement project is to increase the capacity and safety of the existing highway. New traffic signals, including ITS features, will be provided at six intersections: Tram Road, Shumard Oak Boulevard, Merchants Row Boulevard, Blair Stone Road, Orange Avenue and Old St. Augustine Road. The project also includes significant landscaping as well as pedestrian, bicycle and recreational amenities.

Project Personnel:

| | | |
|------------------------|------------------------------|------------------|
| Blueprint 2000: | Project Manager: | Marek Romanowski |
| | Construction Manager: | Marcus Kelley |
| PBS&J: | Project Manager: | Steve Martin |

Contract Cost & Schedule Status - As of 8/14/2007

| | |
|--------------------------------------|------------------|
| Contract Commencement: | 10Jan05 |
| Contract Completion: | 02Oct07 |
| Percent of Work Performed: | 79.2% |
| Original Contract Amount: | \$ 30,796,339.34 |
| Executed Supplemental Agreements: | \$ 5,818,213.15 |
| Pending Supplemental Agreements: | \$ 181,156.30 |
| Current Contract Amount: | \$ 36,614,552.49 |
| Invoiced to Date: | \$ 29,002,609.05 |
| Remaining Contract Amount: | \$ 7,611,943.44 |
| Percent of Contract Amount Complete: | 79.2% |
| Original Contract Time: | 995 Days |
| Contract Time Extensions: | 186 Days |
| Current Contract Time: | 1181 Days |
| Contract Time Expended: | 946 Days |
| Contract Time Remaining: | 235 Days |
| Percent Contract Time Expended: | 80.1% |

E1 - CAPITAL CIRCLE SE – TRAM RD TO CONNIE DR

Schedule Milestones:

| | |
|--|---------|
| Intergovernmental Agency (IA) Approval | 20Sep04 |
| Execute Contract | 22Dec04 |
| Notice to Proceed | 10Jan05 |
| Right of Way Acquisition, Phase 1 | 01May05 |
| Right of Way Acquisition, Phase 2 | 01Sep06 |
| 60% Design Submission - Segment I | 28Feb05 |
| 90% Design Submission - Segment II | 15Apr05 |
| Final Design Submission - Segment II | 25Jul05 |
| 90% Design Submission - Segment IV | 30Aug05 |
| 90% Design Submission - Segment III | 05Oct05 |
| 90% Design Submission - Segment I | 14Feb06 |
| Final Design Submission - Segment IV | 24May06 |
| Final Design Submission - Segment III | 15Aug06 |
| Final Design Submission - Segment I | 17May06 |
| Contract Completion | 21Apr08 |

| Design Subconsultant Participation: | Contract Amt | % of Design Contract | Expended To Date | Year To Date |
|---|---------------------|-----------------------------|-------------------------|---------------------|
| Diversified Design & Drafting Services, Inc. | | | | |
| <i>Design survey</i> | \$ 111,758.50 | 5.54 | \$ 77,230.00 | \$ 0.00 |
| Allen Nobles & Associates, Inc. | | | | |
| <i>Tree survey for permit application</i> | \$ 18,000.00 | 0.89 | \$ 18,000.00 | \$ 18,000.00 |
| Environmental & Geotechnical Specialists, Inc. | | | | |
| <i>Geotechnical design services</i> | \$ 163,985.26 | 8.13 | \$ 163,985.26 | \$ 2,677.26 |
| CMTS Florida, LLC | | | | |
| <i>Inspection services</i> | \$ 210,000.00 | 10.41 | \$ 122,436.00 | \$ 103,704.00 |
| Registe Sliger Engineering, Inc. | | | | |
| <i>Structural design</i> | \$ 9,898.58 | 0.49 | \$ 8,017.85 | \$ 6,137.12 |
| PBS&J (Design Lead) | | | | |
| <i>Design</i> | \$ 1,503,957.66 | 74.54 | \$ 1,473,844.16 | \$ 453,045.70 |
| <hr/> | | | | |
| Total Design Contract: | \$ 2,017,600.00 | 100.00% | \$ 1,863,513.27 | \$ 583,564.08 |

| | | |
|---------------------|---------------|--------|
| Design MBE Goal: | \$ 312,728.00 | 15.50% |
| Design MBE to Date: | \$ 371,669.11 | 19.94% |

E1 - CAPITAL CIRCLE SE – TRAM RD TO CONNIE DR

CONSTRUCTION:

| Construction Subconsultant Participation: | Contract Amt | % of Design Contract | Expended To Date | Year To Date |
|---|------------------|----------------------|------------------|--------------|
| Ganes & Son Striping <i>Striping</i> | \$ 863,382.92 | 2.50 | \$ 669,598.28 | \$ 0.00 |
| Construction Support Southeast <i>Construction Support</i> | \$ 1,694,000.00 | 4.90 | \$ 1,200,137.67 | \$ 0.00 |
| All American Ford <i>Vehicles</i> | \$ 223,761.19 | 0.65 | \$ 223,761.19 | \$ 0.00 |
| Ingram Signalization <i>Signal Installation</i> | \$ 2,371,960.00 | 6.86 | \$ 901,549.74 | \$ 0.00 |
| Greeways of America <i>Landscaping</i> | \$ 1,400,000.00 | 4.05 | \$ 962,460.57 | \$ 0.00 |
| Hale Contracting <i>Construction Support</i> | \$ 150,000.00 | 0.43 | \$ 67,557.25 | \$ 0.00 |
| Florida Developer <i>Construction Support</i> | \$ 175,000.00 | 0.51 | \$ 102,483.80 | \$ 0.00 |
| Terry's Trucking <i>Hauling</i> | \$ 1,339,859.08 | 3.87 | \$ 1,339,859.08 | \$ 0.00 |
| M Inc. <i>Prime Contractor</i> | \$ 26,361,389.30 | 76.23 | \$ 21,082,304.18 | \$ 0.00 |
| <hr/> | | | | |
| Total Construction Contract: | \$ 34,579,352.49 | 100.00% | \$ 26,549,711.76 | \$ 0.00 |

| | | |
|---------------------------|-----------------|--------|
| Construction MBE Goal: | \$ 7,261,664.02 | 21.00% |
| Construction MBE to Date: | \$ 5,467,407.58 | 20.60% |

M. Inc. Contract

Total Construction Contract:
 \$29,132,815.28

Const. Invoiced to Date: \$21,646,841.88
 Const. MBE Invoice to Date: \$5,467,407.58

| | | |
|---------------------------|-----------------|--------|
| Construction MBE Goal: | \$ 6,117,891.21 | 21.00% |
| Construction MBE to Date: | | 25.26% |

E1 - CAPITAL CIRCLE SE – TRAM RD TO CONNIE DR

Project Status:

Erosion Control and Clearing and Grubbing work is complete from Tram Road to Connie Drive on both sides of Capital Circle with the exception of some 800 feet on the west side of CCSE, north of Old St. Augustine Road. COT Utility relocation permit was obtained for all Segments and all utility relocation work has been completed on the project. The EMP conditional permit for Segment 2 was granted on October 31, 2005. Segment 2B EMP permit conditions have been satisfied and full permit for Segment 2 is in effect as of April 20, 2006. Curb and gutter and structural asphalt have been placed on CCSE between south of Tram Road and Blair Stone Road. Concrete curb and gutter, basecourse and structural asphalt are completed on northbound lanes between Blair Stone Road and Connie Drive. Construction of the west side of Blair Stone Road intersection is in progress. Design of Segment 3 is complete and the final plans have been released for construction. The EMP permit for Segment 3 was issued on September 8, 2006 conditional upon permitting of SouthWood drainage ponds WD 90N, WD 90S and WD290. SouthWood obtained the required permit on 11/30/06. Excavation of SouthWood ponds near Segment 3 was started on March 5, 2007 and is in progress. Earthworks, drainage installations, concrete curb and gutter, limerock base course and structural asphalt have been placed on Segment 3 northbound lanes. Traffic has been switched over to northbound lanes of Segment 3 on 7/11/07. Grading, drainage installation, curb and gutter, limerock base course and structural asphalt are in progress on southbound lanes. Permit for Segment 4 was obtained on June 8, 2006 and final plans for that Segment have been released for construction September 8, 2006. Work on Pond 11 in Segment 4 is completed. Grading, concrete curb and gutter, base course and structural asphalt on Segment 4 northbound lanes are complete. Traffic has been relocated onto northbound lanes of Segment 4 and grading and drainage work is in progress on southbound lanes between Connie Drive and Old St. Augustine Road. Construction of Old St. Augustine Road east of CCSE is complete to the top of structural asphalt. Construction of Old St. Augustine Road west of CCSE has been started on 6/17/07.

Work on re-use water line installation is in progress. Placement of COT Water Utility potable waterline and storm drainage system is complete between Tram Road and Blair Stone Road. Curb and gutter and structural asphalt are complete on Tram Road on both sides of CCSE. No major erosion control, safety, or maintenance of traffic issues to date.

Landscaping work between Tram Road and Blair Stone Road is substantially completed, and landscaping work on the east side of CCSE continues to Connie Drive. The DRB Meeting was held on August 14, 2007.

E1 - CAPITAL CIRCLE SE – TRAM RD TO CONNIE DR

CCSE – Blair Stone Road Intersection Modification in Progress



CCSE – Segment 3 Southbound Lane Construction



E1 - CAPITAL CIRCLE SE – TRAM RD TO CONNIE DR

Activities Since Last Period:

1. Blueprint continued to coordinate MOT plans for construction of Blair Stone Road west of CCSE and Monday Street temporary access to CCSE
2. Blueprint coordinated fiberglass lighting poles acceptance with the pole manufacturer, M. Inc. and FDOT
3. Blueprint coordinated design revisions in Segment 4 (embankment in the ravine, driveways, gravity wall)
4. The DB Team continued landscaping work on the east side of Segments 3 and 4
5. Curb and gutter, base course and structural asphalt have been placed on the west side of southbound lanes between Merchants Row Boulevard and Barcelona Lane (except Blair Stone Road intersection)
6. Excavation of SouthWood ponds near Segment 3 continued and the road opened to traffic
7. Grading, drainage, curb and gutter and base course on Old St. Augustine Road west of CCSE has been completed
8. Grading and drainage installations continued on Segment 4 south bound lanes at Old St. Augustine Road intersection, east side of CCSE

Planned Activities for Next Period:

1. Conduct CEI progress meetings
2. Start installation of street lighting poles
3. Continue construction of CCSE/Blair Stone Road intersection to top of structural asphalt
4. Complete construction of Orange Avenue intersection with CCSE
5. Continue construction of embankment, drainage installation and base course on the southbound lanes of Segments 3 and 4, north of Barcelona Lane
6. Start embankment construction, drainage and MOT at Segment 4 ravine
7. Continue excavation of Segment 3 ponds
8. Continue landscaping work on the west side of CCSE in Segments 3 and 4
9. Complete construction of Old St. Augustine Road west of CCSE

E1 - CAPITAL CIRCLE SE – TRAM RD TO CONNIE DR

Significant Issues and Resolutions:

ISSUE

1. Right-of-way and easement issues with COT Electric Utility (north of Monday Street).
2. Permitting - Segment 3.

RESOLUTION

Re. pt. 1: Blueprint is currently discussing the following options with COT and FDOT:

- a) To obtain a 30' roadway easement from COT Electric Utility that would allow FDOT future access and maintenance of CCSE embankment within COT Electric Utility ROW north of Monday Street.
- b) Instead of getting an easement, Blueprint would obtain the 30' strip of ROW from COT Electric in fee simple, and would provide the 30' utility easement to COT Electric on the same strip of ROW acquired from them.

Re. pt.2: Blueprint coordinated the EMP permit conditions for Segment 3 with SouthWood and COT. SouthWood volunteered to provide an interim drainage easement south of Tram Road to facilitate EMP permit processing independently of the approval of SouthWood SFMP by the City. An Agreement between CRCDD (SouthWood) and Blueprint has been reached to build the three ponds on SouthWood property, in the vicinity of the CCSE Segment 3, that would receive stormwater from CCSE. Based on this Agreement, the Supplemental Agreement (SA 13) between Blueprint and the Joint Venture was entered into for construction of the ponds. The SA 13 was executed on 2/12/07 and the construction of the ponds started in March 2007. The construction is currently in progress.

CCSE – Old St. Augustine Road West Ready for Paving



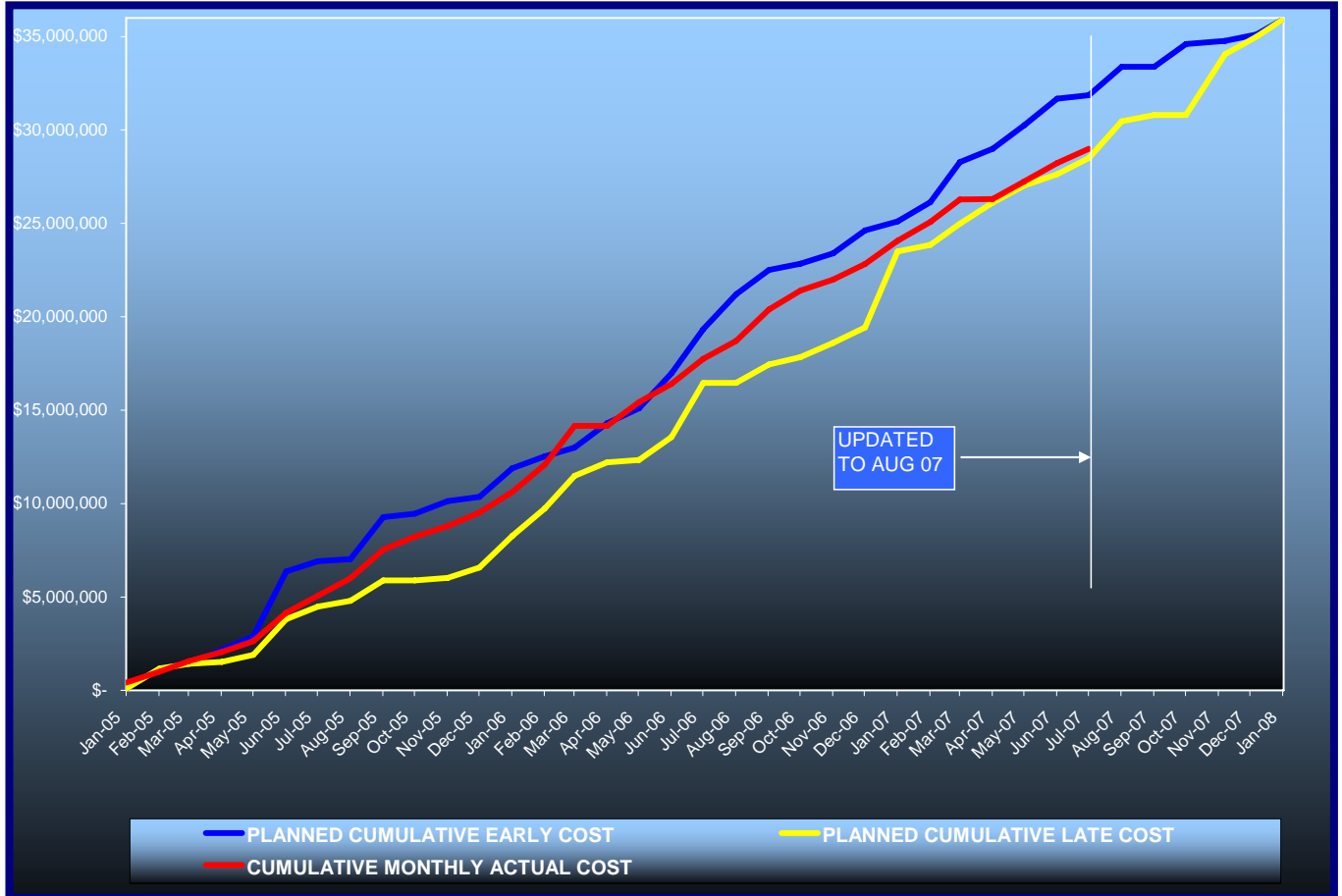
E1 - CAPITAL CIRCLE SE – TRAM RD TO CONNIE DR

CCSE – Tram Road Intersection Substantially Complete



E1 - CAPITAL CIRCLE SE – TRAM RD TO CONNIE DR

DB Team Financial Summary of Planned vs. Actual Cost



C2 - CAPITAL CASCADE TRAIL –SEGMENT 2 DESIGN

Project Description:

Within the Capital Cascade Trail, Segment 2 is from Lafayette Street to South Monroe Street.

Project Personnel:

| | | |
|------------------------|------------------------|------------------|
| Blueprint 2000: | David Bright: | Planning Manager |
| | Gary Phillips: | Project Manager |
| Genesis: | Mark Llewellyn: | Project Manager |

Contract Cost & Schedule Status - Agreement No. 533/Authorization LOA - As of 8/13/2007

| | |
|----------------------------|---------|
| Contract Commencement: | 30May06 |
| Contract Completion: | 31Oct07 |
| Percent of Work Performed: | 58.0% |

| | |
|--------------------------------------|-----------------|
| Original Contract Amount: | \$ 2,399,652.27 |
| Executed Supplemental Agreements: | \$ 0.00 |
| Pending Supplemental Agreements: | \$ 0.00 |
| Current Contract Amount: | \$ 2,399,652.27 |
| Invoiced to Date: | \$ 1,541,580.14 |
| Remaining Contract Amount: | \$ 858,072.13 |
| Percent of Contract Amount Complete: | 64.2% |

| | |
|---------------------------------|----------|
| Original Contract Time: | 519 Days |
| Contract Time Extensions: | 124 Days |
| Current Contract Time: | 643 Days |
| Contract Time Expended: | 440 Days |
| Contract Time Remaining: | 203 Days |
| Percent Contract Time Expended: | 68.4% |

Schedule Milestones:

| | |
|--------------------------------|---------|
| Letter of Authorization | 30May06 |
| Submit Design Project Schedule | 15Jun06 |
| Workshop #1: Program Formation | 27Jul06 |
| Workshop #2: Design Selection | 14Sep06 |
| Plan Submittal - 50% | 30Jun07 |
| Plan Submittal - 90% | 27Sep07 |
| All deliverables completed | 03Mar08 |

C2 - CAPITAL CASCADE TRAIL – SEGMENT 2 DESIGN

| Design Subconsultant Participation: | Contract Amt | % of Design Contract | Expended To Date | Year To Date |
|---|---------------------|-----------------------------|-------------------------|---------------------|
| Archaeological Consultants Inc. <i>Archaeological Services</i> | \$ 33,910.84 | 1.41 | \$ 29,965.42 | \$ 29,965.42 |
| Environmental and Geotechnical Specialist <i>Geotechnical</i> | \$ 207,652.55 | 8.65 | \$ 195,071.18 | \$ 195,071.18 |
| Akin Associates Architects <i>Architectural</i> | \$ 143,002.37 | 5.96 | \$ 13,793.29 | \$ 13,793.29 |
| Moore Bass <i>Land Planning</i> | \$ 36,148.00 | 1.51 | \$ 4,456.16 | \$ 4,456.16 |
| Uzzell Advertising <i>Public Relations</i> | \$ 15,562.61 | 0.65 | \$ 14,062.61 | \$ 14,062.61 |
| Carr, Lynch, Sandell <i>Park Design</i> | \$ 135,550.00 | 5.65 | \$ 127,164.83 | \$ 127,164.83 |
| Jennings Environmental <i>Environmental</i> | \$ 34,800.00 | 1.45 | \$ 17,341.83 | \$ 17,341.83 |
| Pinnacle Engineering Group <i>MEP</i> | \$ 72,048.91 | 3.00 | \$ 7,843.74 | \$ 7,843.74 |
| CDM <i>Stormwater</i> | \$ 141,230.00 | 5.88 | \$ 94,485.92 | \$ 94,485.92 |
| Genesis Group <i>Prime</i> | \$ 1,580,054.00 | 65.84 | \$ 1,037,395.16 | \$ 1,037,395.16 |
| <hr/> | | | | |
| Total Design Contract: | \$ 2,399,959.28 | 100.00% | \$ 1,541,580.14 | \$ 1,541,580.14 |

| | | |
|---------------------|---------------|--------|
| Design MBE Goal: | \$ 371,993.69 | 15.50% |
| Design MBE to Date: | \$ 257,348.66 | 18.20% |

****Please Note: Carr, Lynch and Sandell's contract amount is not contained in the MBE calculation.**

C2 - CAPITAL CASCADE TRAIL – SEGMENT 2 DESIGN

Project Status:

Letter of Authorization #5 and #6 were executed on March 9 and May 30, 2006, respectively. The two LOAs have been combined under Segment 2 Design and Permitting task for a total cost of \$2,399,652.27

Activities Since Last Period:

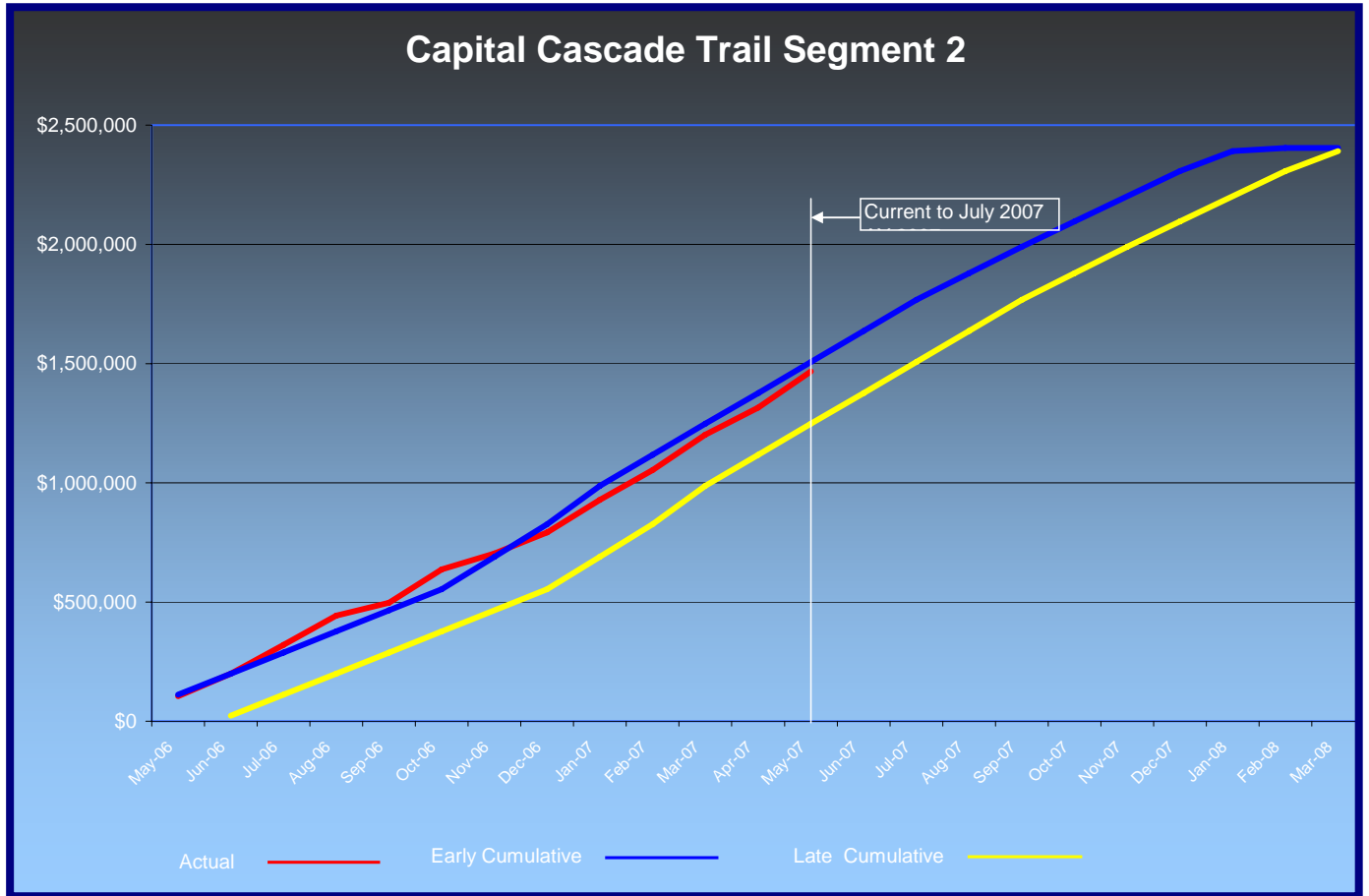
1. Continued to coordinate with UAOs on utility conflicts, relocations and potential enhancements via JPA
2. Met with Steve Murray from the Veterans Affairs to discuss park design plans around the Korean War Memorial.
3. Re-Calibrated XP-SWMM after fix was provided, this effort was projected to take 3 weeks but has required 7 weeks to complete
4. Conducted field review with SHPO to discuss/consider historic wall options
5. Reviewed 50% plan submittal and provided comments back to Genesis
6. Agreed on Supplemental Agreement (Scope and Fee) and pursued IMC approval
7. Met with DEP on TIITF lease application - BP to pursue partial release of land leased by DMS and FDOT except for FDOT parking areas
8. COT Electric Department scheduled to complete SUE work for electrical duct bank in early September
9. Conducted meeting with Ann Bidlingmeier to discuss park design including landscaping plan
10. Send letter to ACOE requesting clarification on agency jurisdiction over SAB
11. CLS continued developing concepts for Interactive Water Play Area and Cascade based on meeting with Michael Wright
12. Met with FSU Master Craftsman Program Director to discuss potential involvement with specialty construction elements such as mosaics, statues, relief maps
13. Met with Survey Board to discuss Meridian Plaza
14. Met with FDOT to discuss partial release of lease of TIITF land

Planned Activities for Next Period:

1. Continue coordination with project partners
2. Provide hydraulic justification for removing culverts at Beverly and Call Streets
3. Evaluate potential hydraulic interim improvements in Segment 1
4. Evaluate Peak Stage in lower pond and effects downstream in Segment 3
5. Submit 50% plans with results of hydraulic analysis in September
6. CDM has completed the post project model and has begun the floodway analysis
7. Submit JPA to FDOT for review
8. Coordinate improvements along South Monroe Street with FDOT programmed resurfacing project: FPID 421635-1
9. Presentation to local ITE Chapter scheduled for August 28

C2 - CAPITAL CASCADE TRAIL – SEGMENT 2 DESIGN

Financial Summary of Planned vs. Actual Cost



C2 - CAPITAL CASCADE TRAIL – SEGMENT 2 DESIGN

Right-Of-Way Status Report:

Capital Cascade Trail - Segment 2 - Blueprint is waiting on Genesis to provide legal descriptions and sketches to enter into a long-term lease agreement with DEP for the use of land within the boundary of the park.



MAHAN DRIVE/US 90 – DEMPSEY MAYO ROAD TO I-10 (TIER 2 BLUEPRINT PROJECT)

Project Description:

This project is the reconstruction of the existing two-lane rural roadway to a four-lane urban roadway with bike lanes and sidewalks. The design is being performed by a consultant under FDOT's direction.

Activities Since Last Period:

1. Geotechnical: All required Geotechnical Reports have been submitted
2. Roadway Plans: The scheduled Phase III (90%) plans have been extended to 8/27/07
3. Utilities: An update meeting was held July 9, 2007 to discuss timeline for utility work schedules
4. Misc. Structure Plans: The design for the mast arm and retaining walls is underway
5. Drainage Design: Addressing 60% review comments
6. Submitted draft Dredge and Fill permit to FDOT for review
7. Lighting Justification Report: The lighting plans to be prepared by COT
8. Signalization Plans: Finalizing work on signalization plans for Phase III (90%) submittal
9. Signing and Pavement Marking Plans: Finalizing work on signing and pavement marking plans for Phase III (90%) submittal

Planned Activities for Next Period:

1. Survey: Confirm benchmarks of the Stewart Pond to match benchmarks of the SR 10 design
2. Geotech to provide Roadway Soils Report in May
3. Submit Design Variation for approval
4. Continue to address 60% review comments and proceed with 90% Plans
5. Utility companies to provide Traci Adkison with their relocation plan by August 1, 2007. Once that information is forwarded to LPA, it will be incorporated into the 90% plan set as well as the Vvh information
6. Continue with mast arm and retaining wall designs for 90% plans submittal
7. Drainage: Incorporate 60% review comments and submit to FDEPT stormwater permit and draft Leon County stormwater permit package to FDOT for review.
8. Community Awareness Plan: Responses to public meeting submitted to, approved by and mailed to FDOT
9. Signalization /Pavement and Marking Plans: Incorporate review comments

ACRONYM GLOSSARY

| | |
|----------------|---|
| CAC | Citizens Advisory Committee |
| CDM | Camp, Dresser & McKee Inc. |
| CEI | Construction Engineering & Inspection |
| COT | City of Tallahassee |
| CR | Community Representative |
| DEP | Department of Environmental Protection |
| ETD | Estimated to Date |
| FCT | Florida Communities Trust |
| FDOT | Florida Department of Transportation |
| FHWA | Federal Highway Administration |
| GEC | General Engineering Consultant |
| GM | Growth Management |
| IA | Intergovernmental Agency |
| LDCA | Location Design Concept Approval |
| LOA | Letter of Authorization |
| MBE | Minority Business Enterprise |
| MOT | Maintenance of Traffic |
| MSE | Mechanically Stabilized Earthwall |
| NTP | Notice to Proceed |
| ROW | Right-of-Way |
| TCC | Technical Coordinating Committee |
| USFS | United States Forestry Service |
| VE | Value Engineering |
| YTD | Year to Date |
| CRTPA | Capital Region Transportation Planning Agency |
| NWFWMDC | Northwest Florida Water Management District |
| FWC | Florida Fish & Wildlife Conservation Commission |