

1311 Executive Center Drive, Suite 109  
The Koger Center, Ellis Building  
Tallahassee, FL 32301  
Tel: 850.701.2740  
Fax: 850.701.2790

**FOR IMMEDIATE RELEASE**

**ATTN: NEWS DIRECTOR**

**Contact:**

**Carlana Hoffman**  
Public Information Officer  
[carlana.hoffman@blueprint2000.org](mailto:carlana.hoffman@blueprint2000.org)

**Margie Quillman**  
Public Involvement Manager  
[margie.quillman@blueprint2000.org](mailto:margie.quillman@blueprint2000.org)

**Wednesday, November 10, 2010**

---

**Blueprint 2000 to Hold Groundbreaking Ceremony for the  
Third Design/Build Expansion Project for Capital Circle Southeast  
Woodville Highway to Crawfordville Road**

---

**Tallahassee** – Blueprint 2000 will hold a Groundbreaking Ceremony to celebrate the third Design/Build expansion project for Capital Circle Southeast on Tuesday, November 16, 2010 at 10:30 a.m. The ceremony will take place across from Flea Market Tallahassee, located at 5353 Capital Circle Southeast in Tallahassee.

Speakers scheduled to attend the ceremony are: District Three Secretary Tommy Barfield, Florida Department of Transportation; Chief Operating Officer David Hawk, Florida Division of the Federal Highway Administration; Leon County Board of County Commissioner and Blueprint Vice-Chair Bryan Desloge and Leon County Board of County Commissioner Bill Proctor. Others attending include Leon County Board of County Commissioners John Dailey and Akin Akinyemi; Leon County Administrator Parwaz Alam and City of Tallahassee Manager Anita Favors Thompson

Improvements for this portion of Capital Circle Southeast include widening the existing two-lane undivided rural road to a seven-lane urban facility. The 1.15 mile project will add curb and gutter, sidewalk, a meandering trail, bicycle lanes, a landscaped median and border, as well as significant stormwater improvements. The project limits are from Woodville Highway to just east of Crawfordville Road.

The contractor for the Design/Build project is C.W. Roberts Contracting, Inc. and Greenhorne & O'Mara, Inc., as their engineer for this \$10.3 million project, of which \$ 8.7 million has been allocated from the American Recovery and Reinvestment Act of 2009 (ARRA) program for the roadway Design/Build and for Construction Engineering and Inspection (CEI) services. Post, Buckley, Schuh & Jernigan, Inc. (PBS&J) will be providing CEI services for the project. In addition, \$1.6 million has been allocated by the City of Tallahassee for Water/Sewer/Reuse Utility improvements. Design is currently underway. Construction is anticipated to begin April 2011.

Upon completion of the project Blueprint 2000 will have completed nearly 9 miles of Capital Circle improvements from just south of Apalachee Parkway to Crawfordville Highway and from West Tennessee Street to I-10.

If you have questions, please contact Blueprint 2000 at 850-701-2740. For details on this and other Blueprint 2000 projects, log on to [www.blueprint2000.org](http://www.blueprint2000.org).

###



1311 Executive Center Drive, Suite 109  
The Koger Center, Ellis Building  
Tallahassee, FL 32301  
Tel: 850.701.2740  
Fax: 850.701.2790

**FOR IMMEDIATE RELEASE**

**ATTN: NEWS DIRECTOR**

**Contact:**

**Carlana Hoffman**  
Public Information Officer  
[carlana.hoffman@blueprint2000.org](mailto:carlana.hoffman@blueprint2000.org)

**Margie Quillman**  
Public Involvement Manager  
[margie.quillman@blueprint2000.org](mailto:margie.quillman@blueprint2000.org)

**Thursday, October 7, 2010**

---

**Blueprint 2000 Receives Funds from American Recovery and Reinvestment Act  
for Third Expansion Project for Capital Circle Southeast**

---

Tallahassee – Blueprint 2000 is pleased to announce that \$8,727,760 has been designated for the third Design/Build expansion project for Capital Circle Southeast. The project limits are from Woodville Highway to just east of Crawfordville Road. The funds provided are part of the American Recovery and Reinvestment Act of 2009 (ARRA) program also known as President Obama's Stimulus Package.

Blueprint 2000 aggressively pursued and was successful in securing the ARRA funding for this project, which has helped stretch our local sales tax dollars while helping to stimulate our economy. Of the \$8,727,760 in ARRA funding \$7,393,598 is provided for the roadway Design/Build and \$1,334,162 for Construction Engineering and Inspection (CEI) services. In addition, \$1,591,027 has been allocated by the City of Tallahassee for Water/Sewer/Reuse Utility improvements, bringing the total to over \$10,318,787 for this project.

Improvements for this portion of Capital Circle Southeast include widening the existing two-lane undivided rural road to a seven-lane urban facility. The 1.15 mile project will add curb and gutter, sidewalk, a meandering trail, bicycle lanes, a landscaped median and border as well as significant stormwater improvements to this segment.

The contract for the Design/Build project was awarded to C.W. Roberts Contracting, Inc. and Greenhorne & O'Mara, Inc., as their engineer. In addition, Post, Buckley, Schuh & Jernigan, Inc. (PBS&J) has been awarded the Construction Engineering and Inspection (CEI) services for the project.

Jim Davis, Executive Director of Blueprint remarked, "This is a great "win" for our community and is a testimony to our continuing partnership with the Florida Department of Transportation."

Limited construction consisting of clearing and grubbing is anticipated to begin this fall. After the design is complete, full construction is anticipated to begin in spring 2011. Completion of construction is anticipated to be in June 2012.

Upon completion of the project Blueprint 2000 will have completed nearly 9 miles of Capital Circle improvements from just south of Apalachee Parkway to Crawfordville Highway and from West Tennessee Street to I-10. Blueprint also anticipates awarding the construction contract for Capital Circle Northwest, from US 90 to SR 20 later this year.

If you have questions, please contact Blueprint 2000 at 850-701-2740. For details on this and other Blueprint 2000 projects, log on to [www.blueprint2000.org](http://www.blueprint2000.org).

###



1311 Executive Center Drive, Suite 109  
The Koger Center, Ellis Building  
Tallahassee, FL 32301  
Tel: 850.701.2740  
Fax: 850.701.2790

**FOR IMMEDIATE RELEASE**

**ATTN: NEWS DIRECTOR**

**Contact:**

**Carlana Hoffman**  
Public Information Officer  
[carlana.hoffman@blueprint2000.org](mailto:carlana.hoffman@blueprint2000.org)

**Margie Quillman**  
Public Involvement Manager  
[margie.quillman@blueprint2000.org](mailto:margie.quillman@blueprint2000.org)

**Friday, August 6, 2010**

---

**Milling and Paving Operations to Impact Traffic at the  
Intersection of Woodville Highway and Capital Circle**

---

**Tallahassee** – Blueprint 2000 announces that motorists can expect delays at the intersection of Woodville Highway and Capital Circle beginning Tuesday, August 10<sup>th</sup>, and continuing through Friday, August 13<sup>th</sup>, weather permitting. The impact to traffic will be intermittent lane shifts. The work will involve milling (grinding the top layer of asphalt) then repaving the highway surface.

Motorists will be assisted through detours by flagmen, law enforcement officers and signage. Motorists are urged to use caution when traveling through the work zone and are reminded to observe the posted speed limit in the construction zone.

If you have questions, please contact Blueprint 2000 at 850-701-2740. For details on this and other Blueprint 2000 projects, log on to [www.blueprint2000.org](http://www.blueprint2000.org).

###



1311 Executive Center Drive, Suite 109  
The Koger Center, Ellis Building  
Tallahassee, FL 32301  
Tel: 850.701.2740  
Fax: 850.701.2790

**FOR IMMEDIATE RELEASE**

**ATTN: NEWS DIRECTOR**

**Contact:**

**Carlana Hoffman**

Public Information Officer

[carlana.hoffman@blueprint2000.org](mailto:carlana.hoffman@blueprint2000.org)

**Margie Quillman**

Public Involvement Manager

[margie.quillman@blueprint2000.org](mailto:margie.quillman@blueprint2000.org)

**Thursday, November 4, 2010**

---

**Blueprint 2000 to Hold Ribbon Cutting Ceremony for Capital Circle Southeast  
Tram Road to Woodville Highway**

---

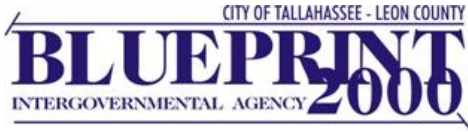
Tallahassee – Blueprint 2000 will hold a Ribbon Cutting Ceremony for the Grand Opening of the widening of Capital Circle Southeast on Tuesday, November 9, 2010 at 10:30 a.m. The event will take place on the south side of Capital Circle and Marketplace Drive. Directional signs will be posted.

Speakers scheduled to attend the ceremony are: Representative Alan B. Williams, Leon County Board of County Commissioner and Blueprint Vice-Chair Bryan Desloge and City of Tallahassee Commissioner Gil Ziffer. Others attending include Leon County Board of County Commissioners Jane Sauls, Bill Proctor and Akin Akinyemi, City of Tallahassee Manager Anita Favors Thompson, Leon County Administrator Parwaz Alam and a representative from the Florida Department of Transportation.

The 2.3 mile six-lane project kicked off in 2007, and now provides a sidewalk, meandering trail, bicycle lanes, curb and gutter, significant storm drainage facilities, substantially landscaped median and borders and bicycle lanes.

If you have questions, please contact Blueprint 2000 at 850-701-2740. For details on this and other Blueprint 2000 projects, log on to [www.blueprint2000.org](http://www.blueprint2000.org).

###



1311 Executive Center Drive, Suite 109  
The Koger Center, Ellis Building  
Tallahassee, FL 32301  
Tel: 850.701.2740  
Fax: 850.701.2790

**FOR IMMEDIATE RELEASE**

**ATTN: NEWS DIRECTOR**

**Contact:**

**Carlana Hoffman**  
Public Information Officer  
[carlana.hoffman@blueprint2000.org](mailto:carlana.hoffman@blueprint2000.org)

**Margie Quillman**  
Public Involvement Manager  
[margie.quillman@blueprint2000.org](mailto:margie.quillman@blueprint2000.org)

**Tuesday, May 18, 2010**

---

## **Update on Delays at the Intersection of Woodville Highway and Capital Circle Due to Paving Operations**

---

**Tallahassee** – Blueprint 2000 announces that motorists can expect delays due to paving operations at the intersection of Woodville Highway and Capital Circle beginning on Wednesday, May 19<sup>th</sup>; and continuing through Friday, May 21<sup>st</sup>; weather permitting.

Temporary short term detours will be utilized as follows:

- Traffic travelling northbound on Woodville Highway will be detoured onto westbound Capital Circle to Shelfer Road to Crossway Road and out to Woodville Highway.
- Traffic travelling southbound on Woodville Highway will be detoured to Crossway Road to Shelfer Road and out to eastbound Capital Circle.
- Traffic travelling on Capital Circle will experience minor delays.

Motorists will be assisted through detours by flagmen, law enforcement officers and signage. Motorists are urged to use caution when traveling through the work zone and are reminded to observe the posted speed limit in the construction zone.

If you have questions, please contact Blueprint 2000 at 850-701-2740. For details on this and other Blueprint 2000 projects, log on to [www.blueprint2000.org](http://www.blueprint2000.org).

###



1311 Executive Center Drive, Suite 109  
The Koger Center, Ellis Building  
Tallahassee, FL 32301  
Tel: 850.701.2740  
Fax: 850.701.2790

**FOR IMMEDIATE RELEASE**

**ATTN: NEWS DIRECTOR**

**Contact:**

**Carlana Hoffman**  
Public Information Officer  
[carlana.hoffman@blueprint2000.org](mailto:carlana.hoffman@blueprint2000.org)

**Margie Quillman**  
Public Involvement Manager  
[margie.quillman@blueprint2000.org](mailto:margie.quillman@blueprint2000.org)

**Wednesday, June 23, 2010**

---

**Traffic Switch Scheduled for Tomorrow on Westbound Capital Circle S.E.**

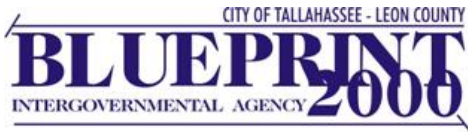
---

**Tallahassee** – Beginning Thursday, June 24, 2010 westbound traffic on Capital Circle S.E. will be shifted onto the newly constructed roadway. The shift, which will begin near Tram Road and continue to just west of Woodville Highway, moves westbound traffic north of the existing roadway. The roadway remains one lane in each direction as the contractor continues construction of the median. Additionally, the right turn/through lane at the intersection of Capital Circle S.E. and northbound Woodville Highway will be designated a right turn only lane starting June 24, 2010.

Off duty law enforcement officers and traffic safety personnel will be present to assist motorists during the traffic shift. Motorists are urged to use caution while traveling through the work zone.

If you have questions, please contact Blueprint 2000 at 850-701-2740. For details on this and other Blueprint 2000 projects, log on to [www.blueprint2000.org](http://www.blueprint2000.org).

###



1311 Executive Center Drive, Suite 109  
The Koger Center, Ellis Building  
Tallahassee, FL 32301  
Tel: 850.701.2740  
Fax: 850.701.2790

**FOR IMMEDIATE RELEASE**

**ATTN: NEWS DIRECTOR**

**Contact:**

**Carlana Hoffman**  
Public Information Officer  
[carlana.hoffman@blueprint2000.org](mailto:carlana.hoffman@blueprint2000.org)

**Margie Quillman**  
Public Involvement Manager  
[margie.quillman@blueprint2000.org](mailto:margie.quillman@blueprint2000.org)

**Thursday, March 25, 2010**

---

**SANDCO, INC. SELECTED TO CONSTRUCT  
CASCADE PARK**

---

**Tallahassee** – Blueprint 2000 opened bids for the construction of the much anticipated Capital Cascade Trail – Segment 2 (Cascade Park) Project on February 4, 2010. Sandco, Inc. of Tallahassee has been selected to provide construction services. The selection process was based on both technical and financial proposal evaluations. The Blueprint 2000 Intergovernmental Agency is expected to award the project by the end of March 2010. The winning bid was in the amount of \$22,977,007.00 to construct Cascade Park, which extends from Lafayette Street on the north to South Monroe Street on the southwest. Construction is anticipated to begin in mid-May 2010 and to be completed within two years (2012).

Cascade Park is the centerpiece of the 4.25 mile linear greenway project planned by Blueprint 2000. The dual purpose 24-acre downtown park is engineered to reduce flooding and will serve as an urban community space and a stormwater management facility. Because of this dual purpose, Blueprint 2000 is financing the Cascade Park project through public and private funding. Receipts from the locally approved 1-percent sales tax dedicated to Blueprint 2000 projects is specifically allotted for stormwater and transportation improvements and the purchase of environmentally sensitive lands. The stormwater-facility aspect of Cascade Park certainly meets the criteria while providing an attractive downtown park.

While the Tallahassee public will primarily view Cascade Park as a recreational area, one of the major goals of construction is resolving local flooding issues. Amazingly, the park will be able to retain more than 32 million gallons of water – enough to fill a 100-foot pool the size of a football field. “This is a major stormwater facility that is cleverly disguised as a world-class park,” adds Jim Davis, Executive Director of Blueprint 2000.

“This is a unique situation,” says City Commissioner Gil Ziffer, who was involved in the park project before being appointed to the City Commission in September 2009. “It’s a stormwater facility because public funds can pay for the stormwater facility. From there we can pay for the amenities through private funds.”



Cascade Park will showcase Tallahassee's natural beauty and cultural history. This project has been described as Blueprint 2000's signature project, and its implementation is part of Tallahassee's vision to create a world-class park in the heart of the city. The park is destined to become a focal point for downtown activities, tying together FSU, FAMU, and the Capitol Center as well as providing a daily refuge for the citizens who live and work nearby. The area in which the park is located is rich with history and contains eight significant historic resources including the Riley House and the Korean War Memorial. Portions of this site were known as Smokey Hollow and Centennial Field. Additionally, this project will promote economic development and serve as a catalyst to renew and invigorate previously abused and abandoned open space.

The 24-acre park will include nearly 2.3 miles of biking and walking trails, an outdoor amphitheater and beautiful landscaped greenspace and ponds. An historical timeline fence will outline Tallahassee's past, while numerous amenities will commemorate specific local places and events. The former Cascade waterfall will be interpreted as an ultra-modern cylindrical fountain. The Prime Meridian Marker will be showcased in a tiled plaza area and a commemorative garden will recall Centennial Field. Another plaza, surrounded by misting fountains, will pay tribute to Smokey Hollow, a vibrant African-American community that existed in the area until the late -1950s.

Fortunately, a number of donors and public agencies have made significant contributions to this project. Capital Health Plan has pledged \$662,000 to create the walking trails, Mainline Information Systems has offered \$200,000 for the waterfall, and Pittman Law Group has contributed \$100,000 for the construction of the Smokey Hollow Plaza. Additional monies received include:

- Legislative Appropriation: Representative Loranne Ausley assisted in obtaining a \$1,500,000 appropriation for stormwater elements of the Park.
- Florida Department of Environmental Protection: \$421,919 grant for the alum/chemical treatment system for the stormwater ponds (still requires U.S. Environmental Protection Agency concurrence).
- Northwest Florida Water Management District: \$300,000 for Watershed Resource Restoration improvements.
- Community Redevelopment Agency: \$1,100,000 funding (over five years) from the Tallahassee (Downtown District) CRA toward initial Park construction elements.
- Planning and Development funding and in-kind services provided by:
  - SunTrust Bank
  - The Trust for Public Land
  - Paula and Bill Smith
  - The John S. and James L. Knight Foundation
  - Ziffer/Stansberry Advertising

Amenities that are funded include:

- Bloxham Promenade, 280-foot gateway from Gadsden Street to Meridian Plaza.
- Meridian Plaza and Amphitheater with lawn seating for 4,000.
- Cascade Waterfall symbolizing the "cascading" water that once occupied this site.
- Smokey Hollow Plaza with Bronze Relief Map and Misting Fountain identifying the African American Community that existed in this area until the mid-20th Century.



- Interactive Waterplay Fountain with dancing water, drawing children and parents alike to its graceful, cooling waters.
- 3,000 sq. ft. community space and restroom facility on Bloxham Promenade.
- Signature Pedestrian Bridges framing the amphitheatre lawn.
- Upper and lower park stormwater ponds with a meandering stream.
- 2.3 mile multi-use fitness trail and sidewalk network.

“If you research across the U.S. for large parks like this, there are always private and corporate donors who make it happen,” says Gary Phillips, Blueprint 2000, Senior Project Manager. “Parks and recreation facilities tend not to get the funding that they might deserve, especially in tough economic times. So to offset that, people in the community say, ‘Well, I want to see this happen’ – and that’s how it comes to fruition.”

Because of this reliance on private funding, Cascade Park will grow gradually, and each amenity will reflect the community’s dedication to the area’s development. Blueprint 2000 is seeking donations for the amenities listed below.

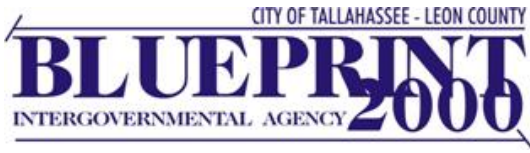
Anticipated Amenities, contingent upon funding, include:

- Shade structure Meridian Plaza Amphitheater.
- Centennial Field Commemorative Plaza recognizing the history of this community gathering space as a ballpark.
- History Timeline Fence with interpretative panels documenting milestones and events in Tallahassee’s history.
- Boca Chuba, a community art piece that stands as a guardian fish at the lower pond outfall, waiting to “swallow” the threatening flood waters.

The Capital Cascade Trail project will become a beautiful gateway into downtown Tallahassee and provide the open space needed to hold community celebrations. A groundbreaking event is being scheduled for later this spring.

“It’s vitally important that the people of Tallahassee have a place like this. It essentially connects our north side, south side, west side and east side. It’s free, and it’s going to be a great place for people to go,” Commissioner Ziffer says.

###



1311 Executive Center Drive, Suite 109  
The Koger Center, Ellis Building  
Tallahassee, FL 32301  
Tel: 850.701.2740  
Fax: 850.701.2790

## NEWS RELEASE

**FOR IMMEDIATE RELEASE: October 5, 2010**

**Contact:**

**Carlana Hoffman**  
Public Information Officer  
[carlana.hoffman@blueprint2000.org](mailto:carlana.hoffman@blueprint2000.org)

**Margie Quillman**  
Public Involvement Manager  
[margie.quillman@blueprint2000.org](mailto:margie.quillman@blueprint2000.org)

---

### **ROAD CLOSURES SCHEDULED FOR PORTIONS OF GAINES STREET/MYERS PARK DRIVE/SUWANNEE STREET**

---

Blueprint 2000 has announced that portions of Gaines Street/Myers Park Drive/Suwannee Street will be closed for approximately three months, beginning October 11, 2010 and continuing through January 2011.

The work will require road closures of the following areas:

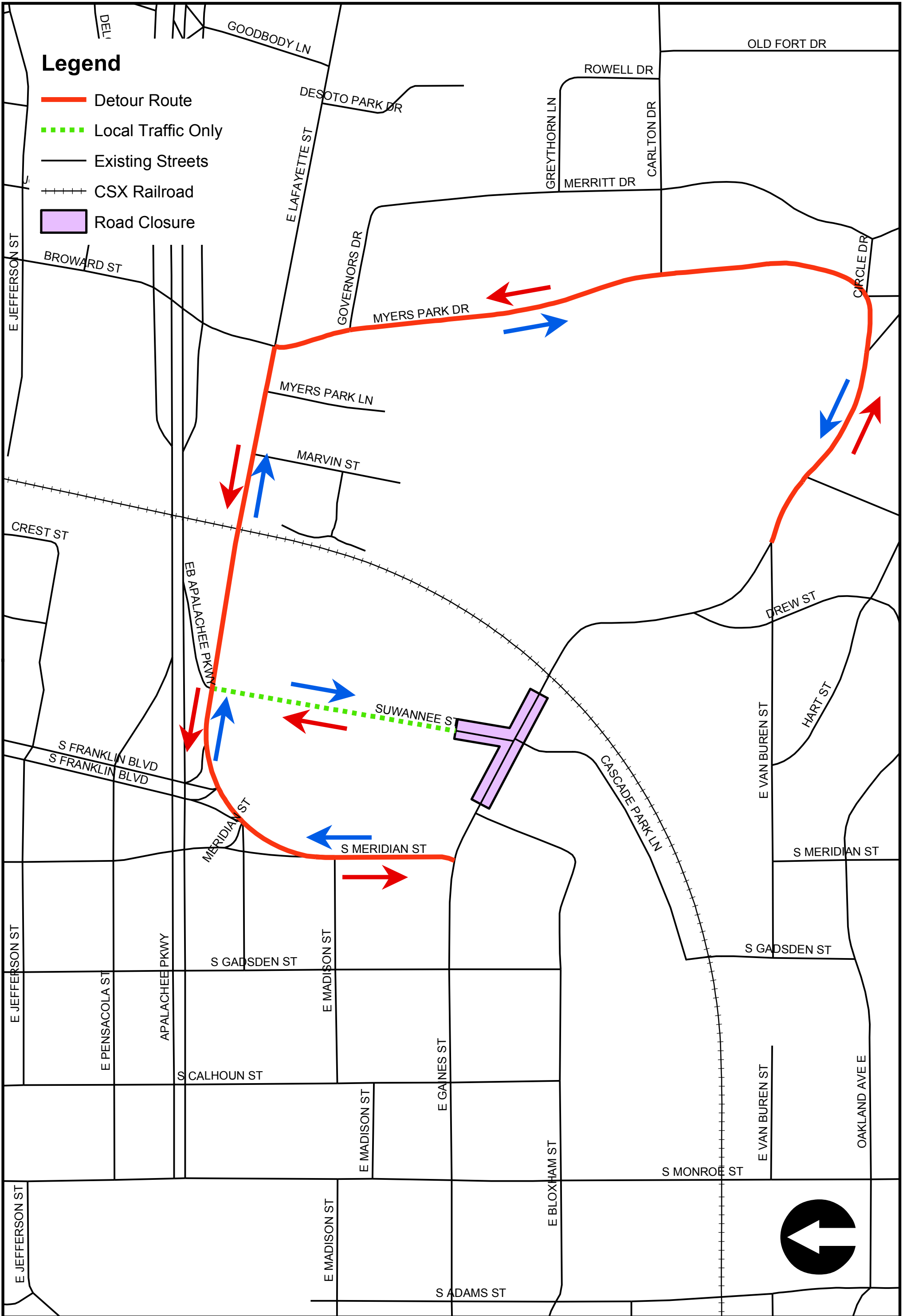
- Gaines Street from Bloxham Drive to Suwannee Street
- Intersection of Myers Park Drive and Suwannee Street, to the railroad crossing
- Suwannee Street, 300' feet north of the Gaines Street/Myers Park Drive intersection

The closures are necessary to construct Cascade Park. Detour routes will be clearly posted, as well as "Local Traffic Only" signs for access to the Myers Park pool area and the City of Tallahassee Parks & Recreation offices. Motorists are advised to use caution in these areas.

Enclosed is a map of the detour route.

If you have questions, please contact Blueprint 2000 at 850-701-2740. For details on this and other Blueprint 2000 projects, log on to [www.blueprint2000.org](http://www.blueprint2000.org).

###



# Gaines Street / Myers Park Drive Suwannee Street Detour Map

October 11, 2010, to January 2011



2507 Callaway Road, Suite 100 | Tel 850.224.4400  
Tallahassee, FL 32303 | Fax 850.681.3600



1311 Executive Center Drive, Suite 109  
The Koger Center, Ellis Building  
Tallahassee, FL 32301  
Tel: 850.701.2740  
Fax: 850.701.2790

## NEWS ADVISORY

**FOR IMMEDIATE RELEASE: April 15, 2010**

**Contact:**

**Carlana Hoffman**  
Public Information Officer  
[carlana.hoffman@blueprint2000.org](mailto:carlana.hoffman@blueprint2000.org)

**Margie Quillman**  
Public Involvement Manager  
[margie.quillman@blueprint2000.org](mailto:margie.quillman@blueprint2000.org)

---

### **Blueprint 2000 to Hold Groundbreaking for Cascade Park**

---

On Wednesday, April 21, 2010, Blueprint 2000 will hold a groundbreaking ceremony for its signature project, Cascade Park. The festivities will commence at 10 a.m., near the intersection of Gadsden Street and Bloxham Street in Tallahassee, FL. The ceremony will mark the beginning of construction for this long-anticipated project. Key donors to the project will receive recognition for their support of Cascade Park.

The community considers Cascade Park as Blueprint 2000's signature project, and its development is another step in realizing Tallahassee's goal of boasting first-rate destinations in the core of the city. While residents will largely use Cascade Park as a recreational area, it will also serve as a much-needed stormwater management facility. Spanning a full 24-acres, Cascade Park will include beautifully manicured greenspaces and ponds, biking and walking trails, an outdoor amphitheater, and other cultural and historic amenities.

**What:** Groundbreaking Ceremony

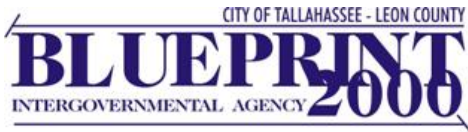
**When:** Date: Wednesday, April 21, 2010  
Time: 10 a.m.

**Who:** Leon County-City of Tallahassee Intergovernmental Agency

**Where:** Intersection of Gadsden St. and Bloxham St.

**Information:** Media interviews will be available immediately following the ceremony. For more information, contact Blueprint 2000 Public Information Officer, Carlana Hoffman, at (850) 701-2740 or email at [carlana.hoffman@blueprint2000.org](mailto:carlana.hoffman@blueprint2000.org).

**###**



1311 Executive Center Drive, Suite 109  
The Koger Center, Ellis Building  
Tallahassee, FL 32301  
Tel: 850.701.2740  
Fax: 850.701.2790

**FOR IMMEDIATE RELEASE**

**ATTN: NEWS DIRECTOR**

**Contact:**

**Carlana Hoffman**  
Public Information Officer  
[carlana.hoffman@blueprint2000.org](mailto:carlana.hoffman@blueprint2000.org)

**Margie Quillman**  
Public Involvement Manager  
[margie.quillman@blueprint2000.org](mailto:margie.quillman@blueprint2000.org)

**Wednesday, March 17, 2010**

---

**Blueprint 2000 Awarded 2009 APWA  
Transportation and Environmental/Stormwater Project of the Year**

---

**Tallahassee** – The Blueprint 2000 Program Team recently received two awards from the Big Bend Branch of the American Public Works Association. The 2009 Project of the Year in the Transportation Category was given to Blueprint’s Capital Circle Southeast widening project from Connie Drive to Tram Road completed in 2008. This corridor improvement was the county’s first horizontal design-build project and widened the roadway to six lanes, including bike lanes, a meandering trail, and significant landscaping. The project required coordination and cooperation with the St. Joe Company and SouthWood related to joint-use stormwater facilities and also accommodated utility upgrades funded by the City of Tallahassee.

Blueprint 2000 also received the 2009 Project of the Year in the Environmental/Stormwater Category for the Martha Wellman Park & Regional Stormwater Pond, dedicated on June 1, 2009. This 15.3-acre pond, located on a 24-acre site, provides retrofit treatment and stormwater detention of runoff from the 326-acre watershed. The Park includes a 0.7-mile lighted trail around the pond which has proven to be a welcome amenity for the west side of the community. This project exemplified the holistic design philosophy of the Blueprint authors and was a result of intergovernmental coordination and funding efforts among Blueprint 2000, Leon County, the Florida Department of Transportation, the Northwest Florida Water Management District, and the Florida Fish and Wildlife Conservation Commission. This is the second award for Martha Wellman Park. *Storm Water Solutions Magazine* named the facility a 2009 Top Storm Water Project in its November/December 2009 issue.

The APWA awards were presented by Committee Chairman George Su, P.E., to Blueprint 2000 Executive Director Jim Davis and Planning Manager Dave Bright at the Big Bend Branch 2010 Banquet on February 25. Both projects have been submitted to the State APWA Chapter for further award consideration.

###